



August 20, 2011

Department of Natural Resources
Oil and Gas Conservation Commission
The Chancery Building
1120 Lincoln St., Suite 801
Denver, CO 80203

Re: **20 Day Certification Letter - 318A-e**
CAMP 28C-25HZ
Township 3 North, Range 66 West, Section 25: SW/4SE/4
Unit Spacing: 03N-66W-25 E/2W/2; W/2E/2
Weld County, Colorado

Ladies/Gentlemen:

Kerr McGee Oil and Gas Onshore LP ("KMG") hereby certify to the Director that KMG owns one-hundred percent (100%) of the mineral rights in the proposed spacing unit. Therefore, KMG respectfully requests the Director to approve the boundary well.

If you have any questions or issues regarding this permit, please contact Cheryl Light at (720) 929-6461.

Very truly yours,

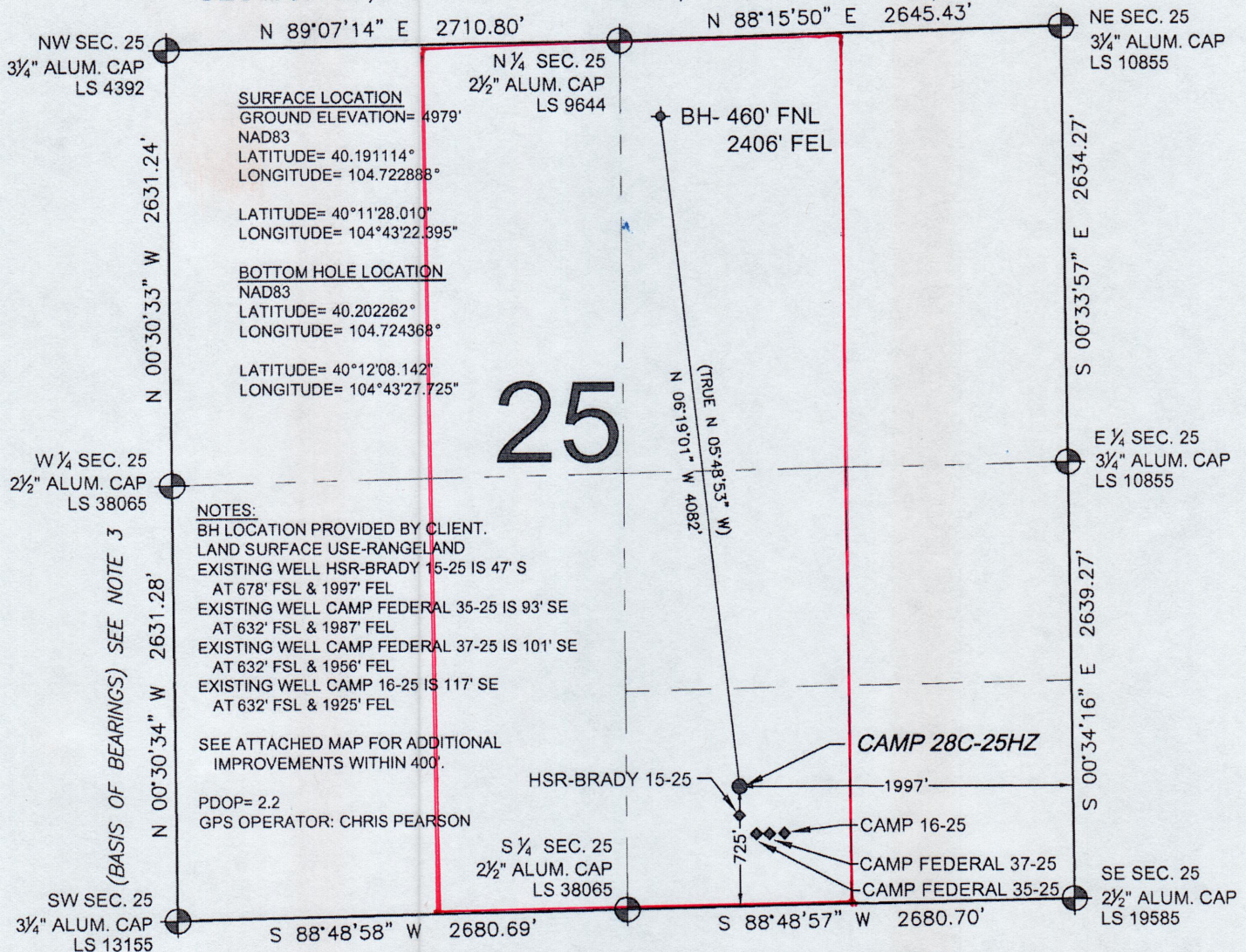
KERR-McGEE OIL AND GAS ONSHORE LP

A handwritten signature in blue ink, appearing to read 'Rebecca Heim'.

Rebecca Heim
Regulatory Analyst

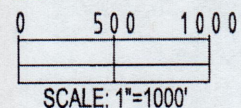
WELL LOCATION CERTIFICATE: CAMP 28C-25HZ

SECTION 25, TOWNSHIP 3 NORTH, RANGE 66 WEST, 6TH P.M.



LEGEND

- = EXISTING MONUMENT
- ◆ = BOTTOM HOLE
- BH = BOTTOM HOLE
- = PROPOSED WELL
- ◆ = EXISTING WELL

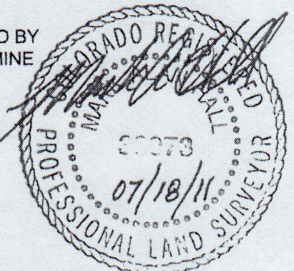


NOTES:

- THIS FIELD SURVEY CONFORMS TO THE MINIMUM STANDARDS SET BY THE C.O.G.C.C., RULE NO. 215
- HORIZONTAL POSITIONS AND ORTHOMETRIC ELEVATIONS SHOWN AT THE WELL HEAD, ARE BASED ON GPS-RTK POSITIONS DERIVED FROM MINIMUM 2-HOUR STATIC OBSERVATIONS CORRECTED BY THE NATIONAL GEODETIC SURVEY ONLINE POSITIONING USER SERVICE, O.P.U.S. DATUM: HORIZONTAL = NAD83/2007, VERTICAL = NAVD88
- THE BASIS OF BEARINGS ARE STATE PLANE COORDINATE SYSTEM GRID BEARINGS SHOWN HEREON BETWEEN THE DESCRIBED THE MONUMENTS SHOWN HEREON.
- GRID DISTANCES ARE SHOWN, AS MEASURED IN THE FIELD, WITH TIES TO WELLS MEASURED PERPENDICULAR TO SECTION LINES.

I, MARK A. HALL, A LICENSED PROFESSIONAL LAND SURVEYOR IN THE STATE OF COLORADO DO HEREBY CERTIFY TO **KERR-MCGEE OIL & GAS ONSHORE LP**, THAT THE SURVEY AND WELL LOCATION CERTIFICATE SHOWN HEREON WERE DONE BY ME OR UNDER MY DIRECT SUPERVISION AND THAT THE DRAWING SHOWN HEREON ACCURATELY DEPICTS THE PROPOSED LOCATION OF THE WELL. THIS CERTIFICATE DOES NOT REPRESENT A LAND SURVEY PLAT OR IMPROVEMENT SURVEY PLAT AS DEFINED BY C.R.S. 38-51-102 AND CANNOT BE RELIED UPON TO DETERMINE OWNERSHIP.

MARK A. HALL, PLS 36073
COLORADO LICENSED PROFESSIONAL LAND SURVEYOR
FOR AND ON BEHALF OF P.F.S., LLC



PREPARED BY:	FIELD DATE:	SURFACE LOCATION:
PFS	06-29-11	SW 1/4 SE 1/4,
Petroleum Field Services, LLC	DRAWING DATE:	SEC. 25, T3N, R66W
1801 W. 136th Ave.	07-05-11	
Denver, CO 80224	BY:	WELD COUNTY, COLORADO
	EFW	

NOTICE: ACCORDING TO COLORADO LAW YOU MUST COMMENCE ANY LEGAL ACTION BASED UPON ANY DEFECT IN THIS SURVEY WITHIN THREE YEARS AFTER YOU FIRST DISCOVER SUCH DEFECT. IN NO EVENT MAY ANY ACTION BASED UPON ANY DEFECT IN THIS SURVEY BE COMMENCED MORE THAN TEN YEARS FROM THIS SAID DATE OF THIS CERTIFICATION SHOWN HEREON.

Map of the Fort Belknap Reservation showing various camps and landmarks. The map includes a grid with latitude and longitude coordinates. Key locations marked include:

- CAMP 4-25A
- CAMP 29-25
- CAMP 28-25
- HSR-TURNER 13-25
- CAMP 31-25
- CAMP UPRR 41-25A
- CAMP 17-25
- UPRR 22 PAN AM K TRUE #1
- CAMP 31-25
- HSR-MOSEMAN 5-25A
- HSR-SCOTT 6-25
- CAMP UPRR 32-25 #2
- CAMP UPRR 42-25
- CAMP 22-25
- HSR-HEILESON 12-25A
- CAMP 10-25A
- HSR-SEELIG 10-25X
- HSR-KRANDEL 9-25
- HSR-SENEKER 11-25
- CAMP 23-25
- UPRR 22 PAN AM F 1
- HSR-SWENSSON 14-25A
- HSR-BRADY 15-25
- CAMP FEDERAL 37-25
- CAMP 13-25

Handwritten notes include "NB-CD", "CD-KSND", "KSND", and "SK". A dashed line runs vertically through the center, and a solid line runs horizontally across the middle.



Bottom Hole Located NW/4NE/4, Sec. 25-T3N-R66W (Dashed line).

This 1/4 Section has less than 8 bottom hole wells producing from the Codell, Niobrara & J Sand Formations.