



August 8, 2011

Department of Natural Resources
Oil and Gas Conservation Commission
The Chancery Building
1120 Lincoln St., Suite 801
Denver, CO 80203

Re: **20 Day Certification Letter - 318A-e**
BARCLAY 27N-27HZ
Township 3 North, Range 66 West, Section 27: SW/4SE/4
Unit Spacing: 03N-66W-27 E/2
Weld County, Colorado

Ladies/Gentlemen:

Kerr McGee Oil and Gas Onshore LP ("KMG") hereby certify to the Director that KMG owns one-hundred percent (100%) of the mineral rights in the proposed spacing unit. Therefore, KMG respectfully requests the Director to approve the boundary well.

If you have any questions or issues regarding this permit, please contact Cheryl Light at (720) 929-6461.

Very truly yours,

KERR-McGEE OIL AND GAS ONSHORE LP

A handwritten signature in blue ink that reads 'Rebecca Heim'.

Rebecca Heim
Regulatory Analyst II

318A Proposed Spacing Unit Plan

T3N, R66W

S 88°54'40" W 5357.58' (M)

NW. COR.
SEC. 27, T3N, R66W,
FOUND 3 1/4" ALUM. CAP
LS 13155

NE. COR.
SEC. 27, T3N, R66W,
FOUND 3 1/4" ALUM. CAP
LS 27269

SURFACE POSITION

NAD 83

STPC (CO NORTH)

N: 1,312,996'

E: 3,206,619'

Lat: 40° 11' 24.740"N

(40.190206°N)

Lon: 104° 45' 37.471"W

(104.760409°W)

BOTTOM HOLE

NAD 83

STPC (CO NORTH)

N: 1,317,358'

E: 3,207,259'

Lat: 40° 12' 07.792"N

(40.202164°N)

Lon: 104° 45' 28.755"W

(104.757987°W)

SURFACE POSITION

NAD 27

STPC (CO NORTH)

N: 312,998'

E: 2,206,771'

Lat: 40° 11' 24.803"N

(40.190223°N)

Lon: 104° 45' 35.582"W

(104.759884°W)

BOTTOM HOLE

NAD 27

STPC (CO NORTH)

N: 317,360'

E: 2,207,411'

Lat: 40° 12' 07.855"N

(40.202182°N)

Lon: 104° 45' 26.866"W

(104.757463°W)

W. 1/4 COR.
SEC. 27, T3N, R66W,
FOUND 3 1/4" ALUM. CAP
LS 13155

SW. COR.
SEC. 27, T3N, R66W,
FOUND 3 1/4" ALUM. CAP
LS 13155

SE. COR.
SEC. 27, T3N, R66W,
FOUND 3 1/4" ALUM. CAP
LS 13155

BARCLAY 27N-27HZ

UNGRADED ELEV= 4956.3'
SURFACE POSITION

S. 1/4 COR.
SEC. 27, T3N, R66W,
SET ALUM. CAP
LS 38230

S 88°52'22" W 2661.88' (M)

S 88°51'37" W 2662.11' (M)

N 00°31'43" W 5284.14' (M)

N 00°53'51" W 2621.38' (M)

N 00°53'19" W 2666.70' (M)

460'

1175'

1855'

BOTTOM OF HOLE

N 08°20'47" E 4409' GRID

N 08°49'27" E TRUE

N 00°29'13" W MAGNETIC

0°29' 8°50'



NOTE:
MAGNETIC NORTH IS CURRENT AS OF 7/14/2011.
MAGNETIC NORTH CHANGES WEST 0°08' PER YEAR.

NOTES:

1. ▲ INDICATES FOUND SECTION CORNER
2. ● INDICATES CALCULATED CORNER
3. ELEVATION BASED ON NAVD88 (GEOID09)
4. BASIS OF BEARING DERIVED FROM COLORADO COORDINATE SYSTEM 1983 NORTH ZONE UNLESS OTHERWISE NOTED.
5. ALL MEASURED DISTANCES ARE GRID.
6. COMBINED SCALE FACTOR: .99972326
7. OPERATOR: ROB WILSON / PDOP = 2.0
8. SURFACE USE OF LOCATION IS RANGE LAND.
9. SEE ADDENDUM TO WELL LOCATION CERTIFICATE FOR EXISTING IMPROVEMENTS WITHIN 400' OF THE WELL PAD.
10. WELL FOOTAGES ARE MEASURED AT RIGHT ANGLES TO THE SECTION LINES.
11. THE BOTTOM OF HOLE BEARS N08°20'47"E, 4409' FROM THE SURFACE POSITION.



SCALE: 1" = 1000'

CERTIFICATE OF SURVEYOR:

THIS IS TO CERTIFY THAT THE ABOVE PLAT WAS PREPARED FROM FIELD NOTES OF ACTUAL SURVEYS MADE BY ME OR UNDER MY SUPERVISION AND THAT THE SAME ARE TRUE AND CORRECT TO THE BEST OF MY KNOWLEDGE AND BELIEF.
THIS CERTIFICATE DOES NOT REPRESENT A LAND SURVEY PLAT OR IMPROVEMENT SURVEY PLAT AS DEFINED BY C.R.S. 38-50-102 AND CANNOT BE RELIED UPON TO DETERMINE OWNERSHIP.

John R. Slough
JOHN R. SLOUGH
PROFESSIONAL LAND SURVEYOR
COLORADO REGISTRATION NUMBER 38230

WELL PAD - BARCLAY 15-27

BARCLAY 27N-27HZ
WELL LOCATION CERTIFICATE
460' FNL & 1175' FEL (BOTTOM HOLE)
NE1/4 NE1/4, SECTION 27
T3N, R66W, 6TH P.M.
WELD COUNTY, COLORADO

Kerr-McGee Oil &
Gas Onshore L.P.
1099 18th Street
Denver, Colorado 80202

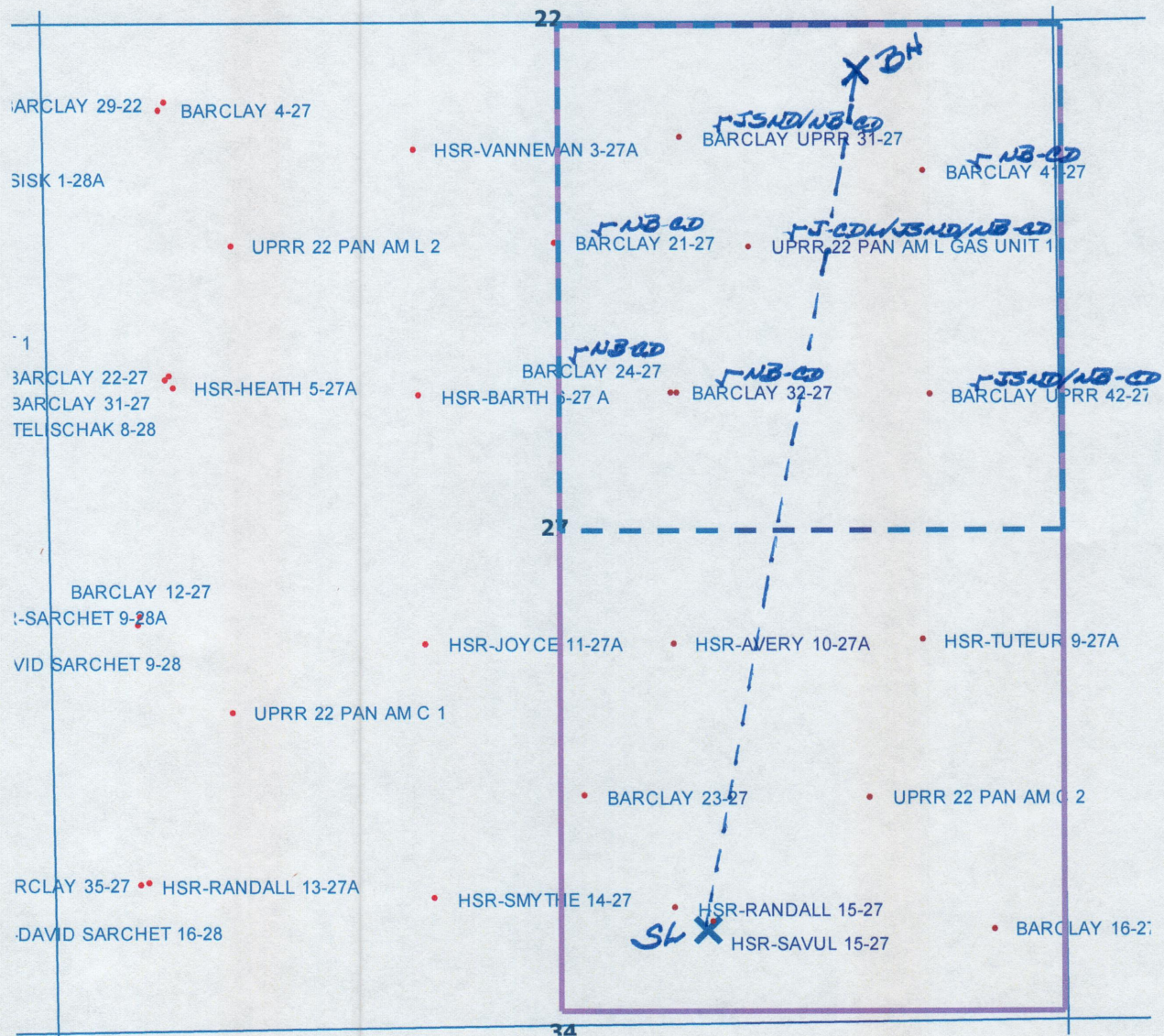


CONSULTING, LLC

2155 North Main Street
Sheridan, Wyoming 82801
Phone 307-674-0609
Fax 307-674-0182

DRAFTED BY: SEA	CHECKED BY: JRS
DATE DRAFTED: 7/14/11	DATE SURVEYED: 6/30/11
REVISED:	FILE NAME: 11-40

BARCLAY 27N-27HZ **SWSE Sec. 27 T3N-R66W**



LEGEND



Proposed 160 acre Spacing Unit (Solid line).



Bottom Hole Located NE/4NE/4, Sec.27-T3N-R66W (Dashed line).

This 1/4 Section has less than 8 bottom hole wells producing from the Codell, Niobrara & J Sand Formations.