

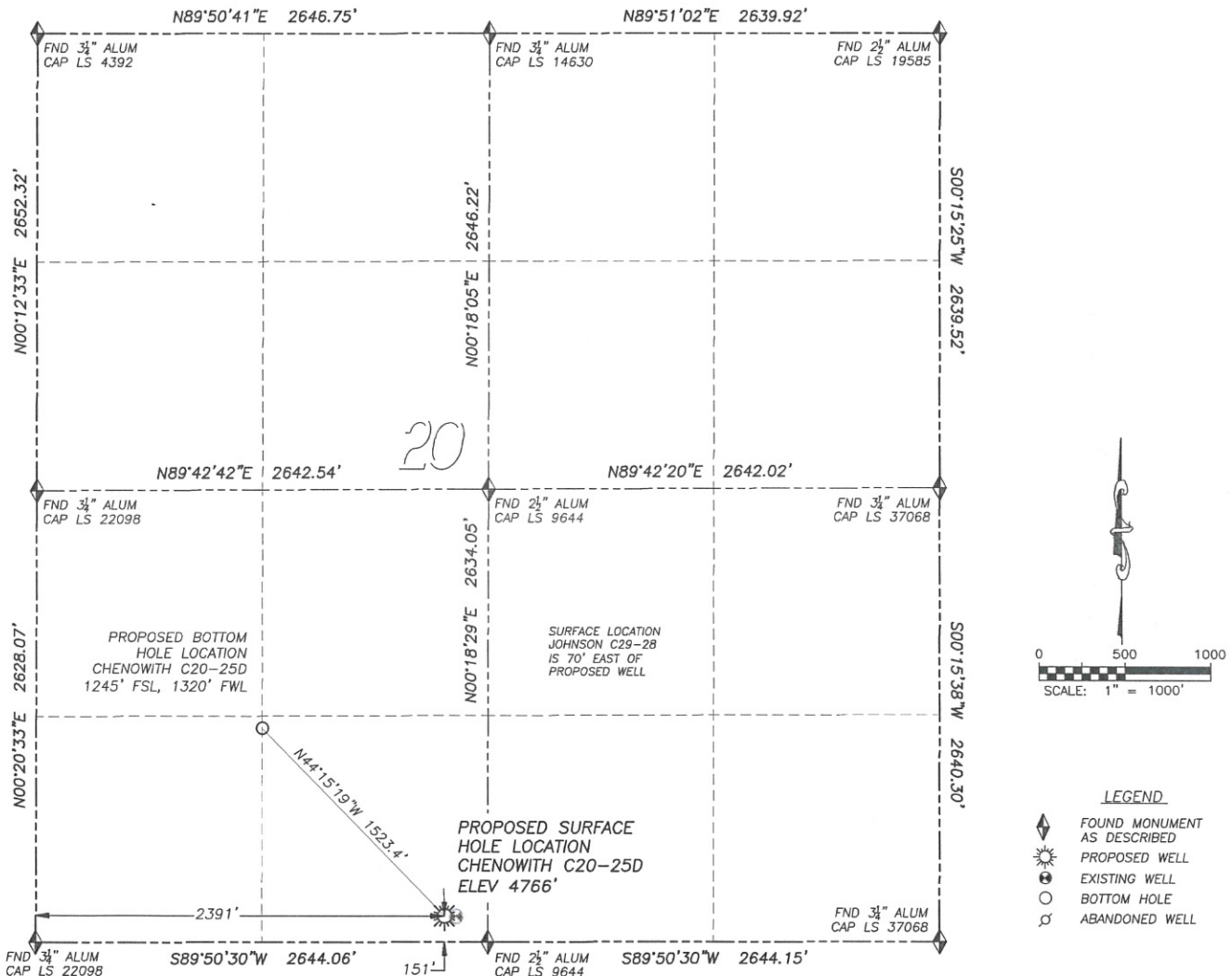
DALEY LAND SURVEYING, INC.

PARKER, CO. 80134

303 953 9841

WELL LOCATION CERTIFICATE CHENOWITH C20-25D

SECTION 20, TOWNSHIP 4 NORTH, RANGE 64 WEST OF THE 6TH PRINCIPAL MERIDIAN



LEGEND

- ◆ FOUND MONUMENT AS DESCRIBED
- ☼ PROPOSED WELL
- EXISTING WELL
- BOTTOM HOLE
- ⊗ ABANDONED WELL

NAD 83 LATITUDE AND LONGITUDE CHENOWITH C20-25D SURFACE HOLE:

LATITUDE: N40.29109°
 LONGITUDE: W104.57961°
 ELEVATION: 4766'
 FOOTAGE: 151' FSL, 2391' FWL
 PDOP: 1.3
 QTR/QTR: SE4/SW4
 PROP LINE: 151'± SOUTH

BOTTOM HOLE:

LATITUDE: N40.29408°
 LONGITUDE: W104.57943°
 FOOTAGE: 1245' FSL, 1320' FWL

NEAREST EXISTING WELL:

JOHNSON C29-28 SURFACE HOLE
 LATITUDE: N40.29108°
 LONGITUDE: W104.57537°
 ELEVATION: 4767'
 70' EAST

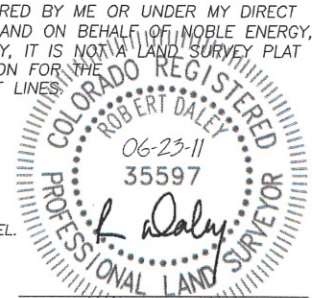
IN ACCORDANCE WITH A REQUEST FROM BRIAN DeROSE OF NOBLE ENERGY INC., DALEY LAND SURVEYING, INC. HAS DETERMINED THE SURFACE LOCATION OF THE CHENOWITH C20-25D WELL TO BE 151' FSL, 2391' FWL, AS MEASURED AT NINETY (90) DEGREES FROM THE SECTION LINES OF SECTION 20, TOWNSHIP 4 NORTH, RANGE 64 WEST OF THE 6TH PRINCIPAL MERIDIAN, WELD COUNTY, COLORADO. THE BOTTOM HOLE LOCATION, PROVIDED BY THE CLIENT, IS TO BE 1245' FSL, 1320' FWL.

I HEREBY CERTIFY THAT THIS WELL LOCATION CERTIFICATE WAS PREPARED BY ME OR UNDER MY DIRECT SUPERVISION, THAT THE WORK WAS COMPLETED ON 6/21/2011 FOR AND ON BEHALF OF NOBLE ENERGY, INC., AND THAT THIS MAP DOES NOT REPRESENT A BOUNDARY SURVEY, IT IS NOT A LAND SURVEY PLAT OR AN IMPROVEMENT SURVEY PLAT AND IT IS NOT TO BE RELIED UPON FOR THE ESTABLISHMENT OF FENCE, BUILDING OR OTHER FUTURE IMPROVEMENT LINES.

NOTES:

- 1) BEARINGS FOR THIS MAP ARE ASSUMED AND BASED UPON GPS OBSERVATIONS MADE BETWEEN MONUMENTS LOCATED AT THE SOUTHWEST CORNER AND SOUTH QUARTER CORNER OF SECTION 20, T.4N., R.64W.
- 2) HORIZONTAL DATUM IS NAD83.
- 3) VERTICAL DATUM IS NAVD88. ELEVATIONS ARE DERIVED FROM GPS OBSERVATIONS PROCESSED THROUGH OPUS, UTILIZING THE GEOID03 MODEL.
- 4) SEE LOCATION DRAWING FOR VISIBLE IMPROVEMENTS WITHIN 600' OF PROPOSED SURFACE HOLE LOCATION.
- 5) SURFACE USE: PASTURE.

NOTICE: According to Colorado law you MUST commence any legal action based upon any defect in this W.L.C. within three years after you first discover such defect. In no event may any action based upon any such defect in this W.L.C. be commenced more than ten years from the date of the certification shown hereon.



FOR AND ON BEHALF OF
 DALEY LAND SURVEYING INC.,
 Robert Daley, PLS 35597

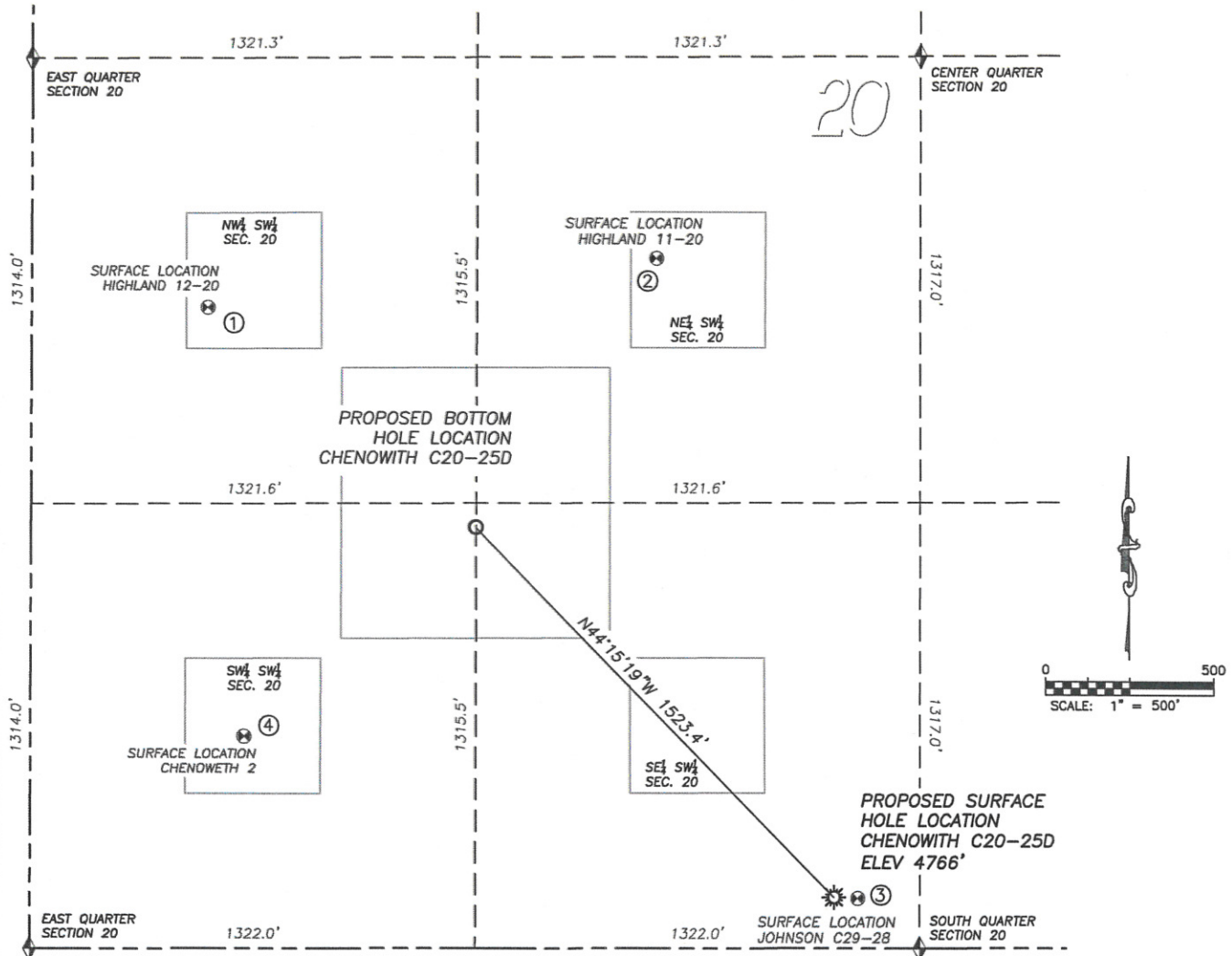
DALEY LAND SURVEYING, INC.

PARKER, CO. 80134

303 953 9841

SITE SKETCH CHENOWITH C20-25D

SECTION 20, TOWNSHIP 4 NORTH, RANGE 64 WEST OF THE 6TH PRINCIPAL MERIDIAN



①

HIGHLAND 12-20

NW/SW SEC. 20
1893' FSL, 524' FWL
1022' NW OF PROPOSED
SURFACE HOLE LOCATION
LAT. N40.29585°
LONG. W104.58227°
EL: 4769'
PDOP 1.2

②

HIGHLAND 11-20

NE/SW SEC. 20
2037' FSL, 1857' FWL
961' NE OF PROPOSED
SURFACE HOLE LOCATION
LAT. N40.29626°
LONG. W104.57748°
EL: 4750'
PDOP 1.3

③

JOHNSON C29-28

SE/SW SEC. 20
147' FSL, 2459' FWL
1575' SE OF PROPOSED
SURFACE HOLE LOCATION
LAT. N40.29108°
LONG. W104.57537°
EL: 4767'
PDOP 1.6

④

CHENOWETH 2

SW/SW SEC. 20
627' FSL, 635' FWL
926' SW OF PROPOSED
SURFACE HOLE LOCATION
LAT. N40.29238°
LONG. W104.58189°
EL: 4792'
PDOP 1.7

NOTES:

- 1) THIS DOES NOT REPRESENT A BOUNDARY SURVEY
- 2) THE LATITUDES AND LONGITUDES SHOWN ARE REFERENCED TO NAD83
- 3) DATUM FOR ELEVATION IS NAVD83. ELEVATIONS ARE DERIVED FROM GPS-RTK OBSERVATIONS PROCESSED THROUGH OPUS, UTILIZING THE GEOD03 MODEL.

LEGEND

- FOUND MONUMENT AS DESCRIBED
- PROPOSED WELL
- EXISTING WELL
- BOTTOM HOLE
- ABANDONED WELL

PAD DETAIL

WELL SPACING
22.5' SPACING BETWEEN
PROPOSED WELLS

