

August 19, 2011

Director  
Colorado Oil and Gas Conservation Commission  
1120 Lincoln Street, Suite 801  
Denver, CO 80203

Re: 20 Day Certification Letter – Rule 318 A(e)  
SRC Aims 10PD  
Township 5 North, Range 66 West  
Section 10  
Weld County, Colorado

Dear Director,

Synergy Resources Corporation (SRC) hereby certifies to the Director that SRC owns 100% interest in the proposed well bore spacing unit for the above said well. SRC hereby requests the Director to approve the Boundary well.

If you have any questions or issues regarding this permit, please contact Craig Rasmuson at (970) 737-1073.

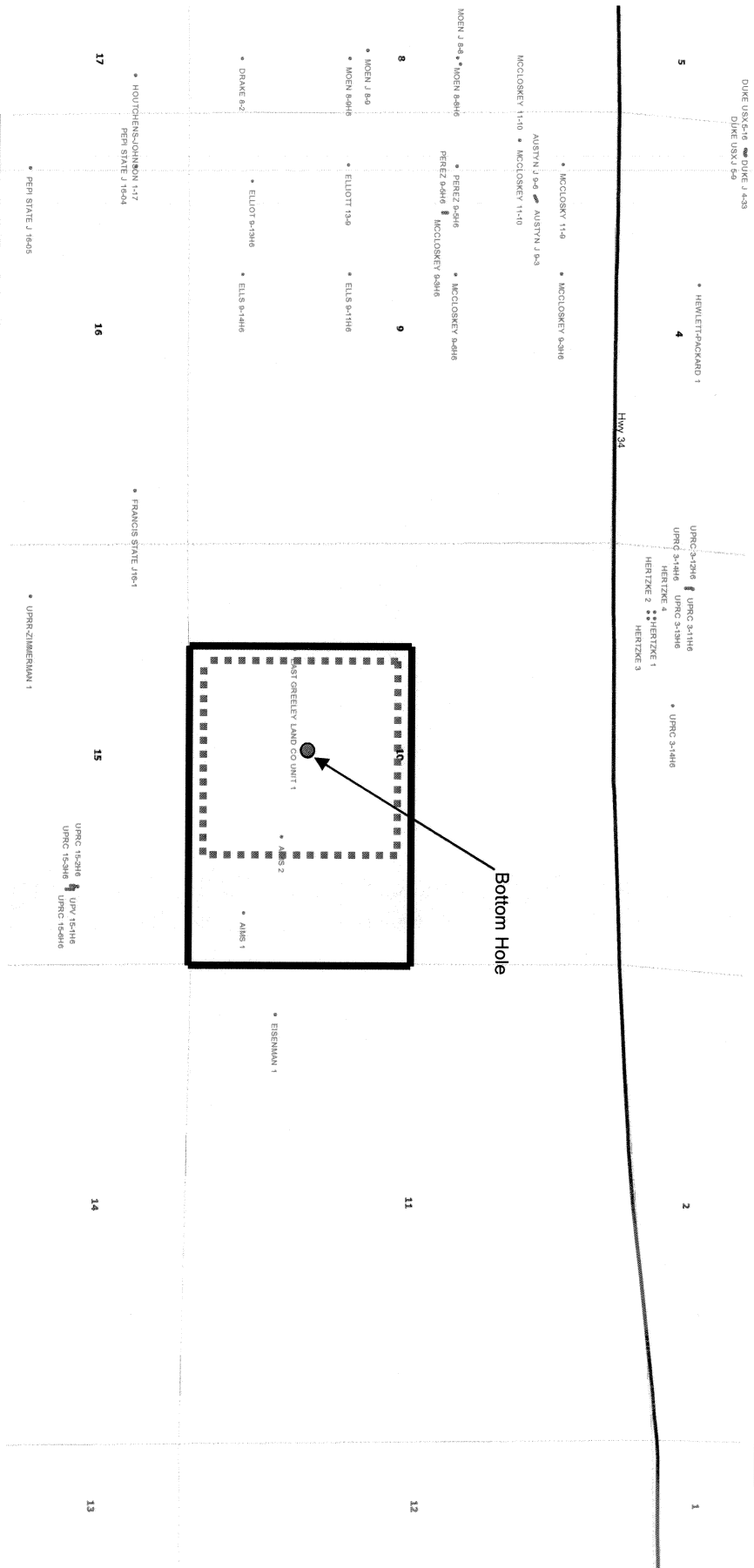
Sincerely,

*Craig Rasmuson*

Craig Rasmuson  
Synergy Resources Corporation

RECEIVED  
AUG 29 2011  
COGCC

**SRC Aims 10PD  
Sec. 10, T5N, R66W**



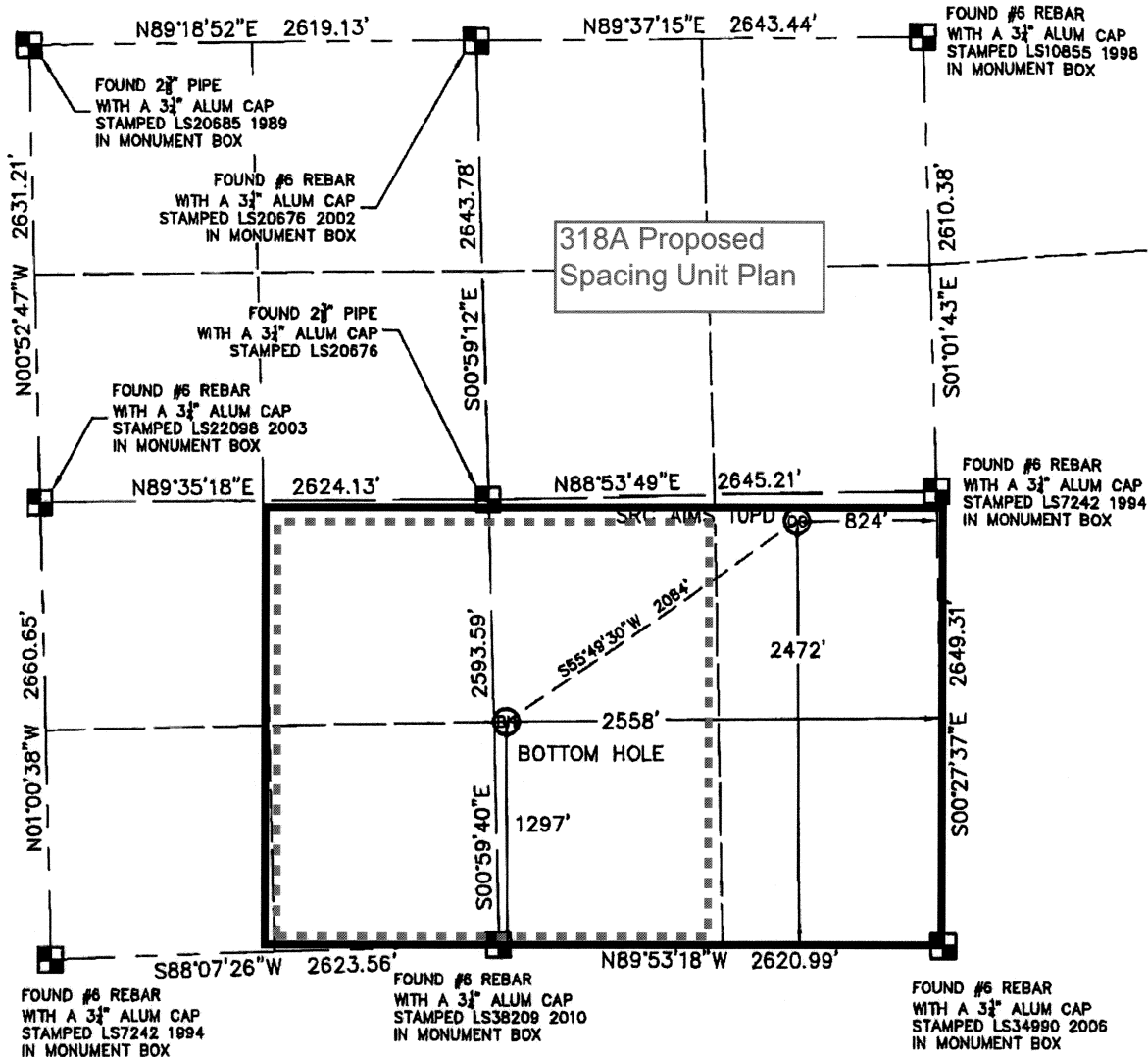
AUG 29 2011

# WELL LOCATION CERTIFICATE

**SRC AIMS 10PD**

THIS MAP DOES NOT REPRESENT A BOUNDARY SURVEY

SECTION: 10  
TOWNSHIP: 5N  
RANGE: 66W



In accordance with a request from CRAIG RASMUSON with SYNERGY RESOURCES CORPORATION, King Surveyors Inc. has determined the surface location of SRC AIMS 10PD to be 2472' from the SOUTH line and 824' from the EAST line and the bottom hole to be 1297' from the SOUTH line and 2558' from the EAST line, as measured at right angles, from the section lines of Section 10, Township 5 North, Range 66 West of the Sixth Principal Meridian, County of Weld, State of Colorado.

I hereby state that this Well Location Certificate was prepared by me, or under my direct supervision, that the fieldwork was completed on 8-15-2011, for and on behalf of SYNERGY RESOURCES CORPORATION. That this is not a Land Survey Plat or an Improvement Survey Plat, and that it is not to be relied upon for establishment of fence, building, or other future improvement lines.




**NOTE:**

- 1) Bearings shown are Grid Bearings of the Colorado State Plane Coordinate System, North Zone, North American Datum 1983/2007. The lineal dimensions as contained herein are based upon the "U.S. Survey Foot."
- 2) Ground elevations are based on an observed GPS elevation (NAVD 1988 DATUM).
- 3) NEAREST EXISTING WELL: NO EXISTING WELLS IN THIS SECTION
- 4) IMPROVEMENTS: See LOCATION DRAWING exhibit for all visible improvements within 400' of disturbed area.
- 5) SURFACE USE: OPEN FIELD
- 6) FIELD OPERATOR: CHAD DILKA
- LEGEND**

SURFACE LOCATION  
LATITUDE: 40.41367°N  
LONGITUDE: 104.75925°W  
PDOP: 1.6  
ELEV: 4859'  
1/4,1/4: NE1/4 SE1/4  
NEAREST PROPERTY LINE

BOTTOM HOLE  
LATITUDE: 40.41050°N  
LONGITUDE: 104.75548°W

### LEGEND

-  = FOUND ALIQUOT MONUMENT  
 AS DESCRIBED  
 = CALCULATED POSITION  
 = SET ALIQUOT MONUMENT  
 AS DESCRIBED

**NOTE**

According to Colorado law, you must commence any legal action based upon any defect in this W.L.C. within three years after you discover such defect. In no event, may any action based upon any defect in this survey be commenced more than ten years after the date of the certificate shown hereon. (13-80-105 C.R.S.)

Michael Chan, Dika - On Behalf of King Surveyors, Inc.  
Colorado Licensed Professional Land Surveyor #38106

PROJECT#: 2011174