

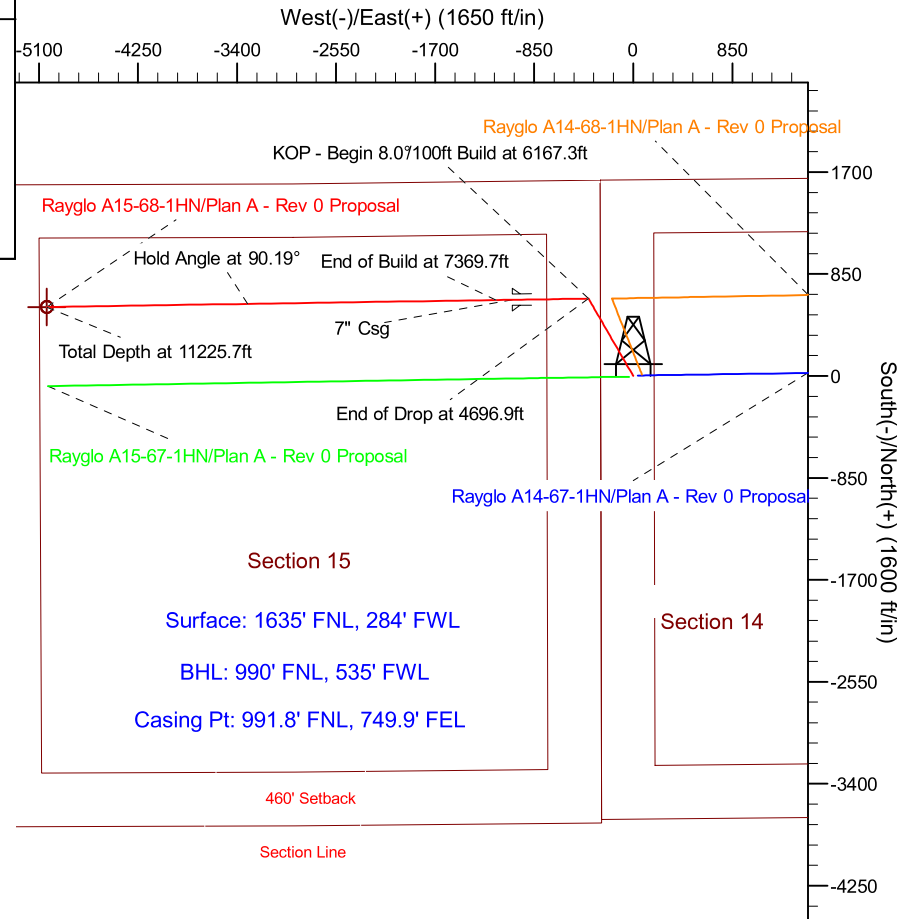
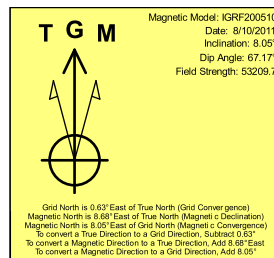
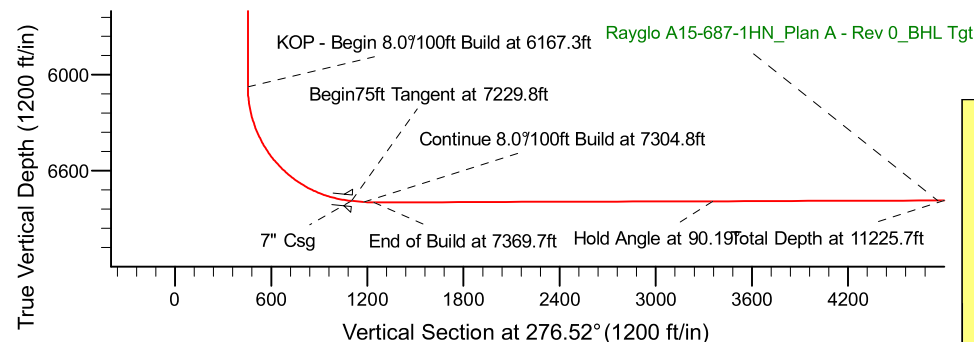
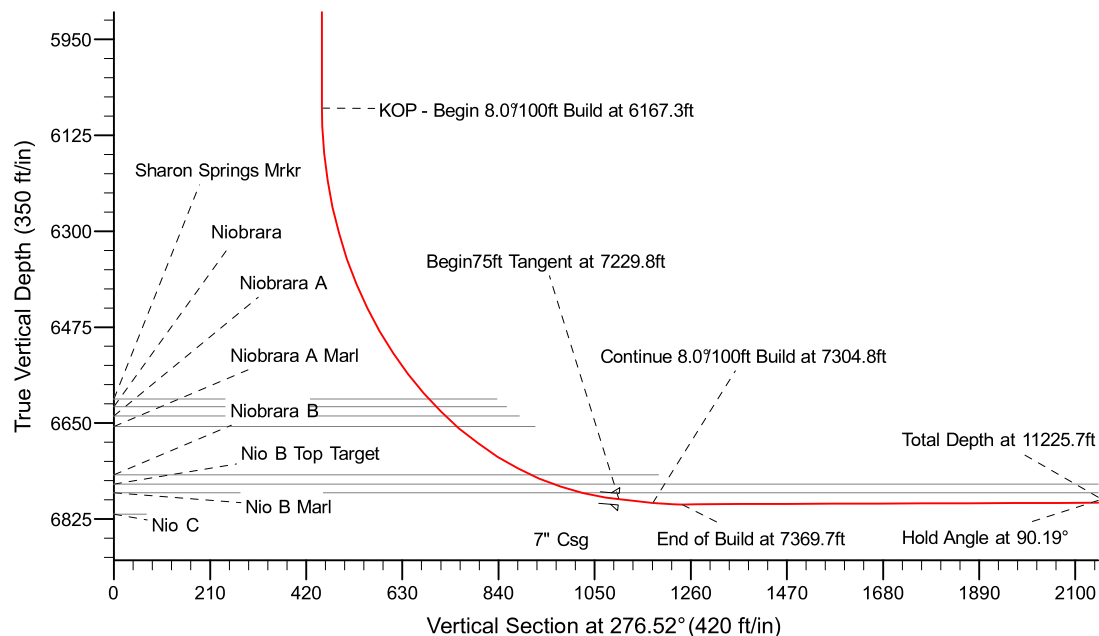
Project: Weld County Colorado (NAD 83)
 Site: Sec.14, T6N, R64W
 Well: Rayglo A15-68-1HN
 Wellbore: Plan A - Rev 0 (PERMITTING PLAN ONLY)
 Design: Plan A - Rev 0 Proposal

Noble Energy

HALLIBURTON
 Sperry Drilling

SECTION DETAILS

Sec	MD	Inc	Azi	TVD	+N/-S	+E/-W	Dleg	TFace	VSec	Target
1	0.0	0.00	0.00	0.0	0.0	0.0	0.00	0.00	0.0	
2	1200.0	0.00	0.00	1200.0	0.0	0.0	0.00	0.00	0.0	
3	1800.0	15.00	329.23	1793.2	67.1	-39.9	2.50	329.23	47.3	
4	4096.9	15.00	329.23	4011.8	577.9	-344.1	0.00	0.00	407.5	
5	4696.9	0.00	0.00	4605.0	645.0	-384.0	2.50	180.00	454.8	
6	6167.3	0.00	0.00	6075.4	645.0	-384.0	0.00	0.00	454.8	
7	7229.8	85.00	269.15	6788.9	635.3	-1037.7	8.00	269.15	1103.2	
8	7304.8	85.00	269.15	6795.4	634.2	-1112.4	0.00	0.00	1177.3	
9	7369.7	90.19	269.15	6798.1	633.2	-1177.2	8.00	0.00	1241.5	
10	11225.7	90.19	269.14	6785.2	575.5	-5032.8	0.00	-76.05	5065.6	Rayglo A15-68-1HN_Plan A - Rev 0_BHL Tgt-



WELL DETAILS: Rayglo A15-68-1HN(NAD 83 Geodetic System)			
Ground Level: 4743.0			
Northing 433564.68	Easting 996994.16	Latitude 40°29' 20.220 N	Longitude 104°31' 32.772 W
Plan: Plan A - Rev 0 Proposal (Rayglo A15-68-1HN/Plan A - Rev 0 (PERMITTING PLAN ONLY))			
Created By: Erasmo Mendoza		Date: 17:02, August 10 2011	
OK to submit with 2A as per Noble Drilling			
8/15/2011 10:25			