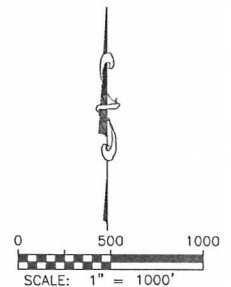
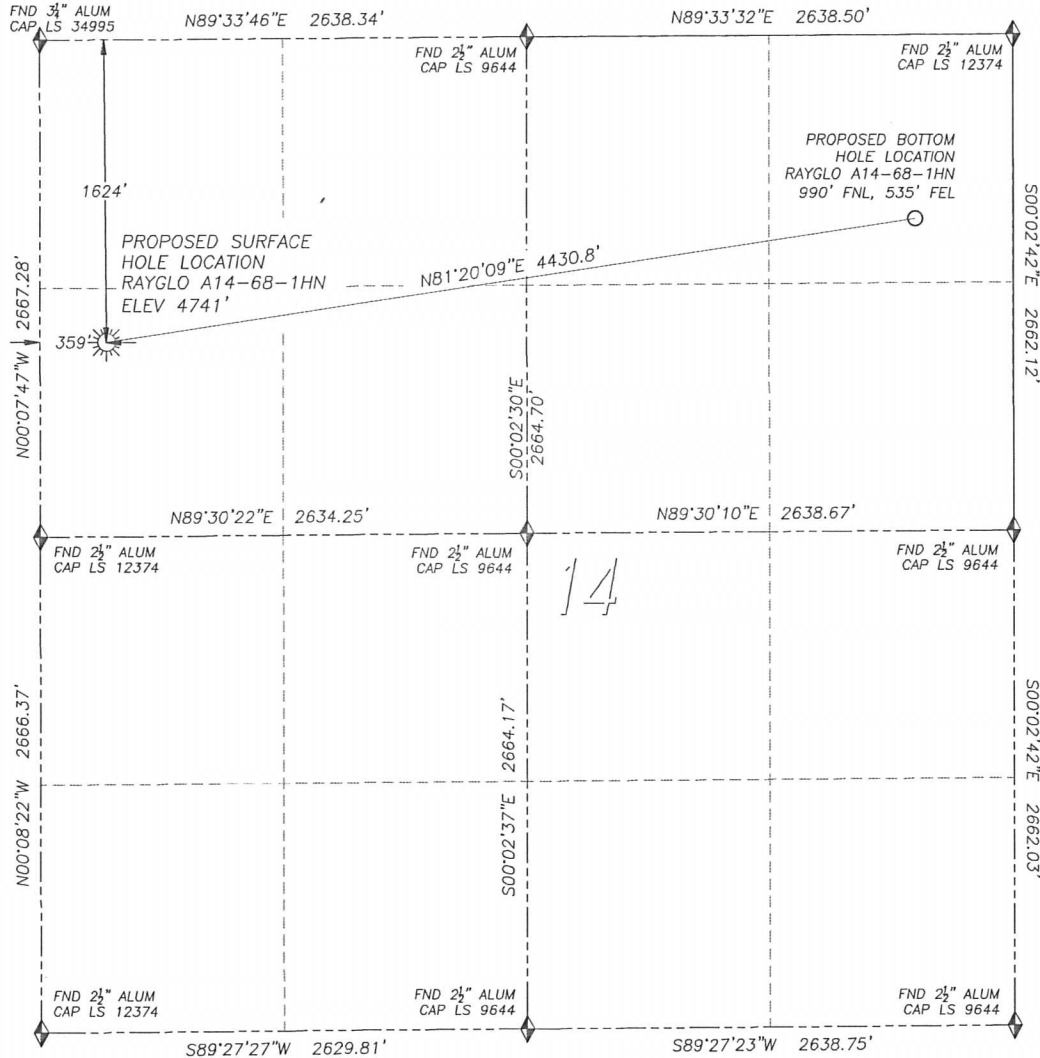


# WELL LOCATION CERTIFICATE

## RAYGLO A14-68-1HN

SECTION 14, TOWNSHIP 6 NORTH, RANGE 64 WEST OF THE 6TH PRINCIPAL MERIDIAN



### LEGEND

- ◆ FOUND MONUMENT AS DESCRIBED
- ☀ PROPOSED WELL
- EXISTING WELL
- BOTTOM HOLE
- ⊗ ABANDONED WELL

### NAD 83 LATITUDE AND LONGITUDE

RAYGLO A14-68-1HN SURFACE HOLE:

LATITUDE: N40.48898°

LONGITUDE: W104.52550°

ELEVATION: 4741'

FOOTAGE: 1624' FNL, 359' FWL

PDOP: 1.7

QTR/QTR: SW4/NW4

PROP LINE: 329'± WEST

### BOTTOM HOLE:

LATITUDE: N40.49081°

LONGITUDE: W104.50976°

FOOTAGE: 990' FNL, 535' FEL

### NEAREST EXISTING WELL:

MCDANIEL 42-15 SURFACE HOLE

LATITUDE: N40.48798°

LONGITUDE: W104.52910°

ELEVATION: 4753'

1065' SOUTHWEST

IN ACCORDANCE WITH A REQUEST FROM SCOTT LEWIS OF NOBLE ENERGY INC., DALEY LAND SURVEYING, INC. HAS DETERMINED THE SURFACE LOCATION OF THE RAYGLO A14-68-1HN WELL TO BE 1624' FNL, 359' FWL, AS MEASURED AT NINETY (90) DEGREES FROM THE SECTION LINES OF SECTION 14, TOWNSHIP 6 NORTH, RANGE 64 WEST OF THE 6TH PRINCIPAL MERIDIAN, WELD COUNTY, COLORADO. THE BOTTOM HOLE LOCATION, PROVIDED BY THE CLIENT, IS TO BE 990' FNL, 535' FEL.

I HEREBY CERTIFY THAT THIS WELL LOCATION CERTIFICATE WAS PREPARED BY ME OR UNDER MY DIRECT SUPERVISION, THAT THE WORK WAS COMPLETED ON 6/20/2011 FOR AND ON BEHALF OF NOBLE ENERGY, INC., AND THAT THIS MAP DOES NOT REPRESENT A BOUNDARY SURVEY, NOR A LAND SURVEY PLAT OR AN IMPROVEMENT SURVEY PLAT AND IT IS NOT TO BE RELIED UPON FOR THE ESTABLISHMENT OF FENCE, BUILDING OR OTHER FUTURE IMPROVEMENT LINES.

### NOTES:

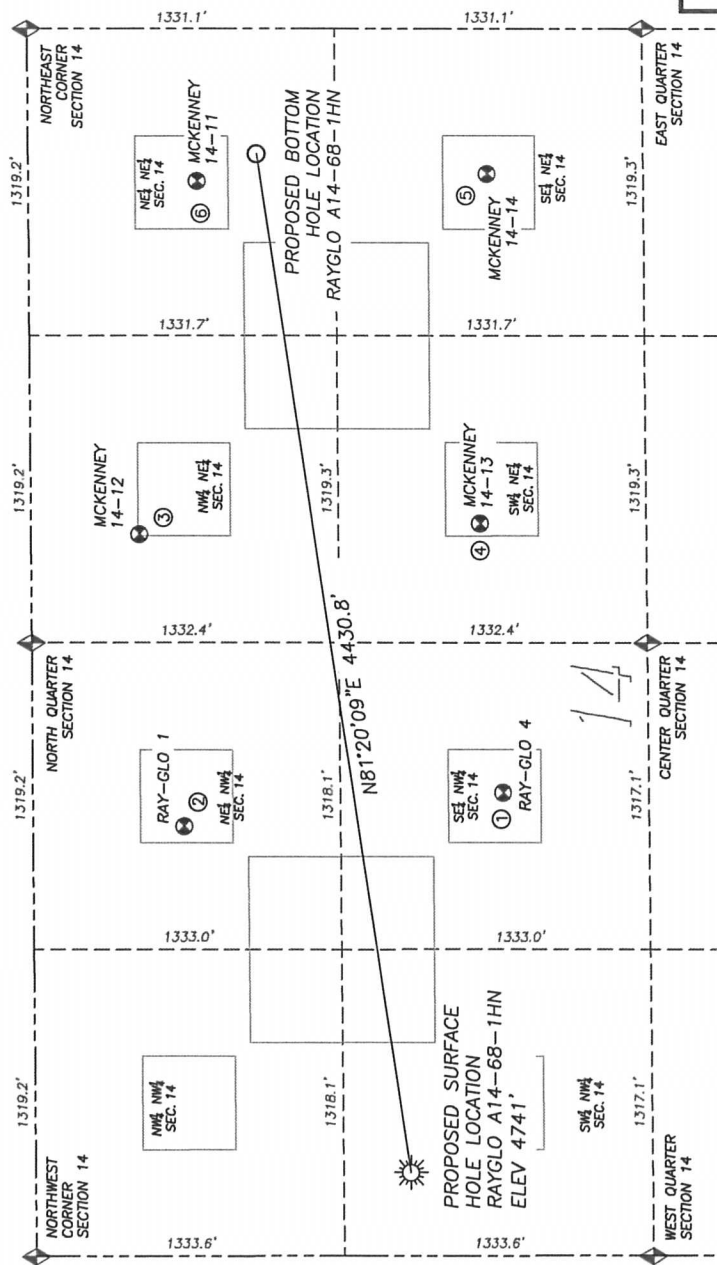
- 1) BEARINGS FOR THIS MAP ARE ASSUMED AND BASED UPON GPS OBSERVATIONS MADE BETWEEN MONUMENTS LOCATED AT THE NORTHWEST CORNER AND WEST QUARTER CORNER OF SECTION 14, T.6N., R.64W.
- 2) HORIZONTAL DATUM IS NAD83.
- 3) VERTICAL DATUM IS NAVD88. ELEVATIONS ARE DERIVED FROM GPS OBSERVATIONS PROCESSED THROUGH OPUS, UTILIZING THE GEOID03 MODEL.
- 4) SEE LOCATION DRAWING FOR VISIBLE IMPROVEMENTS WITHIN 600' OF PROPOSED SURFACE HOLE LOCATION.
- 5) SURFACE USE: PASTURE.

NOTICE: According to Colorado law you MUST commence any legal action based upon any defect in this W.L.C. within three years after you first discover such defect. In no event may any action based upon any such defect in this W.L.C. be commenced more than ten years from the date of the certification shown hereon.



FOR AND ON BEHALF OF  
DALEY LAND SURVEYING, INC.,  
Robert Daley, PLS 35597

DALEY LAND SURVEYING, INC. PARKER, CO. 80134 303 953 9841  
 SITE SKETCH - RAYGLO A14-68-1HN  
 SECTION 14, TOWNSHIP 6 NORTH, RANGE 64 WEST OF THE 6TH PRINCIPAL MERIDIAN



- 1) RAY-GLO 4  
SE/NW SEC. 14  
2037' FNL, 1991' FWL  
LAT. N40.48788°  
LONG. W104.51963°  
EL: 4710'  
PDOP 1.4
- 2) RAY-GLO 1  
NE/NW SEC. 14  
655' FNL, 1850' FWL  
LAT. N40.49167°  
LONG. W104.52015°  
EL: 4711'  
PDOP 1.6
- 3) MCKENNEY 14-12  
NW/NE SEC. 14  
471' FNL, 2170' FEL  
LAT. N40.49220°  
LONG. W104.51563°  
EL: 4690'  
PDOP 1.7
- 4) MCKENNEY 14-13  
SW/NE SEC. 14  
1946' FNL, 2126' FEL  
LAT. N40.48815°  
LONG. W104.51547°  
EL: 4694'  
PDOP 2.1
- 5) MCKENNEY 14-14  
SE/NE SEC. 14  
1988' FNL, 622' FEL  
LAT. N40.48807°  
LONG. W104.51007°  
EL: 4682°  
PDOP 1.8
- 6) MCKENNEY 14-11  
NE/NE SEC. 14  
731' FNL, 653' FEL  
LAT. N40.49152°  
LONG. W104.51018°  
EL: 4677°  
PDOP 1.6

NOTES:  
 1) THIS DOES NOT REPRESENT A  
 BOUNDARY SURVEY  
 2) THE LATITUDES AND LONGITUDES SHOWN  
 ARE REFERENCED TO NAD83  
 3) DATUM FOR ELEVATION IS NAVD88.  
 ELEVATIONS ARE DERIVED FROM  
 GPS-RTK OBSERVATIONS PROCESSED  
 THROUGH OPUS, UTILIZING THE GSD0003  
 MODEL

- LEGEND  
 FOUND MONUMENT  
 AS DESCRIBED  
 PROPOSED WELL  
 EXISTING WELL  
 BOTTOM HOLE  
 ABANDONED WELL

