

WELL				FIELD				STRUCTURE			
Keinath Federal 15-1H				CO, Mesa Co. (NAD83UTM13)				Encana 16-08S-96W (H16OU)			
Magnetic Parameters				Surface Location				Miscellaneous			
Model: BGM 2010		Dip: 65.624°	Date: June 17, 2011	Lat: N 30 21 3.456		Nothing: 14305513.75 RUS		Grid Corn: -1.97117994*		Stat: Well 13	
Mag Dec: 10.383°		FB: 52136.5m		Lon: W 108 8 24.965		Easting: 762049.69 RUS		Scale Fact: 1.00048263		Plan: RO 27-Jun-11	
								TVD Ref: RKD(56578 above MSL)			
								Brv Date: June 17, 2011			

Target Description		Grid Coord		Local Coord	
Target Name	Shape	Major Axis	N(+)S(-)	E(+)W(-)	TVD
KF 15-1H TD	Point	0.00	14307438.47	767430.65	9001.91
KF 15-1H LP	Point	0.00	14305124.10	762284.16	8835.50

Critical Points		Grid Coord		Local Coord	
Critical Point	MD	INCL	DEPTH	TYR	YSEC
KF 15-1H SHL	0.00	0.00	159.15	0.00	0.00
Marker Mudline	22.00	0.00	159.15	22.00	0.00
KOP, Build 2 DLS	850.00	0.00	159.15	850.00	0.00
Hold	1085.21	4.70	159.15	1084.94	1.40
KOP, Drop 2 DLS	1466.60	4.70	159.15	1465.06	5.92
Hold	1701.31	0.00	159.15	1700.00	7.32
Ohio Creek (Top Kmv)	2195.00	0.00	159.15	2193.19	7.32
Williams Fork Fm	2760.00	0.00	159.15	2758.19	7.32
Top Gas	3704.00	0.00	159.15	3702.19	7.32
Coal Ridge (Paludal)	4602.00	0.00	159.15	4600.19	7.32
Rollins Ss (Iles Fm)	4950.00	0.00	159.15	4948.19	7.32
Cozzette	5198.00	0.00	159.15	5196.19	7.32
Corcoran	5459.00	0.00	159.15	5457.19	7.32
Mancos A	6165.00	0.00	159.15	6163.19	7.32
KOP, Build 2 DLS	6175.81	0.00	159.15	6174.00	7.32
Buck Tongue	6325.00	2.98	136.05	6323.12	9.34
Hold	6675.74	10.00	136.05	6671.39	29.99
Mancos B	7001.00	10.00	136.05	6991.71	59.41
Prairie Canyon	7457.00	10.00	136.05	7440.79	100.70
KOP, Build 8 DLS	8219.87	10.00	136.05	8192.07	169.74
Nabrera	8302.00	13.64	108.77	8272.51	181.74
Landing Point	9282.01	88.31	65.79	8857.40	871.19
KF 15-1H TD	14182.01	88.31	65.79	9001.91	5667.66

Quality Control
Date Drawn: June 29, 2011 10:23:59 AM
Drawn by: Oswaldo Salazar
Checked by: Tom Celi
Client OK:

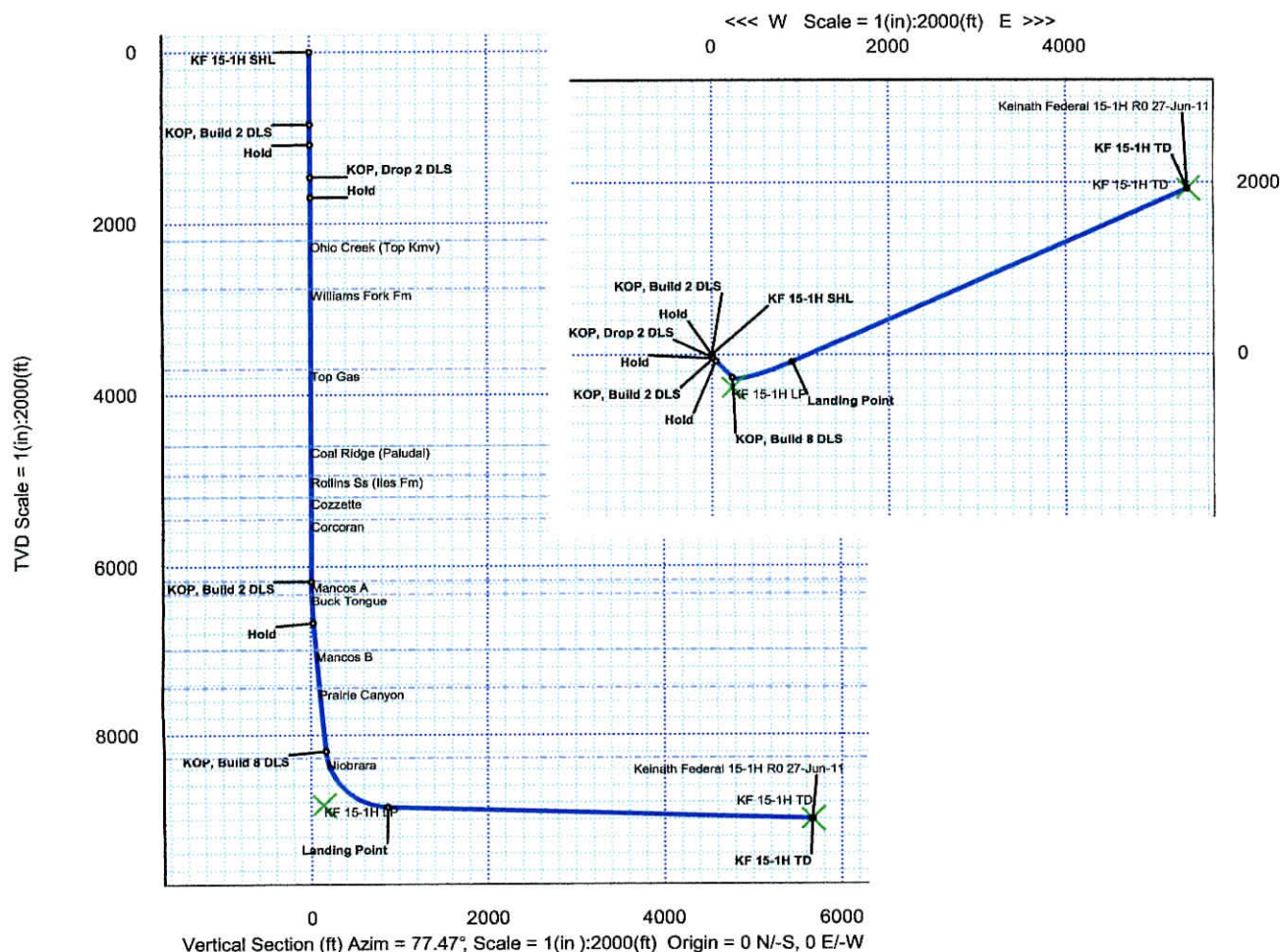
Proposal



Rev 0



Grid North
True Cur: (M=O) (2.3544°)
Mag Dec: (10.383°)
Grid Conv: (-1.97117994°)



Keinath Federal 15-1H R0 27-Jun-11 Proposal Report

(Non-Def Plan)

Report Date: June 29, 2011 - 10:48 AM
 Client: Encana Oil & Gas (USA) Inc.
 Field: CO, Mesa County (NAD 83 UTM 13) EnCana 2010
 Structure / Slot: Encana 15-08S-96W (H150U Pad) / Well 13
 Well: Keinath Federal 15-1H
 Borehole: Original Hole
 UWI / API#: Unknown / Unknown
 Survey Name: Keinath Federal 15-1H R0 27-Jun-11
 Survey Date: June 17, 2011
 Tort / AHD / DDI / ERD Ratio: 104.378 ° / 5974.059 ft / 5.992 / 0.864
 Coordinate Reference System: NAD83 UTM Zone 13N, US Feet
 Location Lat / Long: N 39° 21' 3.45800", W 108° 6' 24.96802"
 Location Grid N/E Y/X: N 14305513.755 ftUS, E 762049.689 ftUS
 CRS Grid Convergence Angle: -1.97117694 °
 Grid Scale Factor: 1.00048263

Survey / DLS Computation: Minimum Curvature / Lubinski
 Vertical Section Azimuth: 77.469 ° (Grid North)
 Vertical Section Origin: 0.000 ft, 0.000 ft
 TVD Reference Datum: RKB
 TVD Reference Elevation: 5887.000 ft above MSL
 Seabed / Ground Elevation: 5845.000 ft above MSL
 Magnetic Declination: 10.383 °
 Total Field Strength: 52138.635 nT
 Magnetic Dip Angle: 65.624 °
 Declination Date: June 17, 2011
 Magnetic Declination Model: BGM 2010
 North Reference: Grid North
 Grid Convergence Used: -1.971 °
 Total Corr Mag North->Grid North: 12.354 °
 Local Coord Referenced To: Well Head

Comments	MD (ft)	Incl (°)	Azim Grid (°)	TVD (ft)	VSEC (ft)	NS (ft)	EW (ft)	DLS (°/100ft)	Northing (ftUS)	Easting (ftUS)	Latitude (N/S ° ' ")	Longitude (E/W ° ' ")
KF 15-1H SHL	0.00	0.00	159.15	0.00	0.00	0.00	0.00	0.00	14305513.75	762049.69	N 39 21 3.46	W 108 6 24.97
Marker MudLine	22.00	0.00	159.15	22.00	0.00	0.00	0.00	0.00	N/A	0.00	N/A	N/A
	100.00	0.00	159.15	100.00	0.00	0.00	0.00	0.00	14305513.75	762049.69	N 39 21 3.46	W 108 6 24.97
	200.00	0.00	159.15	200.00	0.00	0.00	0.00	0.00	14305513.75	762049.69	N 39 21 3.46	W 108 6 24.97
	300.00	0.00	159.15	300.00	0.00	0.00	0.00	0.00	14305513.75	762049.69	N 39 21 3.46	W 108 6 24.97
	400.00	0.00	159.15	400.00	0.00	0.00	0.00	0.00	14305513.75	762049.69	N 39 21 3.46	W 108 6 24.97
	500.00	0.00	159.15	500.00	0.00	0.00	0.00	0.00	14305513.75	762049.69	N 39 21 3.46	W 108 6 24.97
	600.00	0.00	159.15	600.00	0.00	0.00	0.00	0.00	14305513.75	762049.69	N 39 21 3.46	W 108 6 24.97
	700.00	0.00	159.15	700.00	0.00	0.00	0.00	0.00	14305513.75	762049.69	N 39 21 3.46	W 108 6 24.97
	800.00	0.00	159.15	800.00	0.00	0.00	0.00	0.00	14305513.75	762049.69	N 39 21 3.46	W 108 6 24.97
KOP, Build 2 DLS	850.00	0.00	159.15	850.00	0.00	0.00	0.00	0.00	14305513.75	762049.69	N 39 21 3.46	W 108 6 24.97
	900.00	1.00	159.15	900.00	0.06	-0.41	0.16	2.00	14305513.35	762049.84	N 39 21 3.45	W 108 6 24.96
	1000.00	3.00	159.15	999.93	0.57	-3.67	1.40	2.00	14305510.08	762051.09	N 39 21 3.42	W 108 6 24.95
Hold	1085.21	4.70	159.15	1084.94	1.40	-9.02	3.43	2.00	14305504.73	762053.13	N 39 21 3.37	W 108 6 24.92
	1100.00	4.70	159.15	1099.69	1.57	-10.15	3.87	0.00	14305503.60	762053.58	N 39 21 3.36	W 108 6 24.91
	1200.00	4.70	159.15	1199.35	2.76	-17.82	6.78	0.00	14305495.93	762056.48	N 39 21 3.28	W 108 6 24.87
	1300.00	4.70	159.15	1299.01	3.94	-25.48	9.70	0.00	14305488.26	762059.40	N 39 21 3.21	W 108 6 24.83
	1400.00	4.70	159.15	1398.68	5.13	-33.14	12.62	0.00	14305480.59	762062.32	N 39 21 3.13	W 108 6 24.79
KOP, Drop 2 DLS	1466.60	4.70	159.15	1465.06	5.92	-38.25	14.57	0.00	14305475.49	762064.28	N 39 21 3.08	W 108 6 24.76
	1500.00	4.04	159.15	1498.35	6.29	-40.63	15.47	2.00	14305473.11	762065.17	N 39 21 3.06	W 108 6 24.75
	1600.00	2.04	159.15	1598.21	7.05	-45.58	17.36	2.00	14305468.16	762067.05	N 39 21 3.01	W 108 6 24.73
	1700.00	0.04	159.15	1698.19	7.32	-47.27	18.00	2.00	14305468.46	762067.70	N 39 21 3.00	W 108 6 24.72
Hold	1701.81	0.00	159.15	1700.00	7.32	-47.27	18.00	2.00	14305468.46	762067.70	N 39 21 3.00	W 108 6 24.72
	1800.00	0.00	159.15	1798.19	7.32	-47.27	18.00	0.00	14305468.46	762067.70	N 39 21 3.00	W 108 6 24.72
	1900.00	0.00	159.15	1898.19	7.32	-47.27	18.00	0.00	14305468.46	762067.70	N 39 21 3.00	W 108 6 24.72
	2000.00	0.00	159.15	1998.19	7.32	-47.27	18.00	0.00	14305468.46	762067.70	N 39 21 3.00	W 108 6 24.72
	2100.00	0.00	159.15	2098.19	7.32	-47.27	18.00	0.00	14305468.46	762067.70	N 39 21 3.00	W 108 6 24.72
Ohio Creek (Top Kmv)	2195.00	0.00	159.15	2193.19	7.32	-47.27	18.00	0.00	14305466.46	762067.70	N 39 21 3.00	W 108 6 24.72
	2200.00	0.00	159.15	2198.19	7.32	-47.27	18.00	0.00	14305466.46	762067.70	N 39 21 3.00	W 108 6 24.72
	2300.00	0.00	159.15	2298.19	7.32	-47.27	18.00	0.00	14305466.46	762067.70	N 39 21 3.00	W 108 6 24.72
	2400.00	0.00	159.15	2398.19	7.32	-47.27	18.00	0.00	14305466.46	762067.70	N 39 21 3.00	W 108 6 24.72
	2500.00	0.00	159.15	2498.19	7.32	-47.27	18.00	0.00	14305466.46	762067.70	N 39 21 3.00	W 108 6 24.72
	2600.00	0.00	159.15	2598.19	7.32	-47.27	18.00	0.00	14305466.46	762067.70	N 39 21 3.00	W 108 6 24.72
	2700.00	0.00	159.15	2698.19	7.32	-47.27	18.00	0.00	14305466.46	762067.70	N 39 21 3.00	W 108 6 24.72
Williams Fork Fm	2760.00	0.00	159.15	2758.19	7.32	-47.27	18.00	0.00	14305466.46	762067.70	N 39 21 3.00	W 108 6 24.72
	2800.00	0.00	159.15	2798.19	7.32	-47.27	18.00	0.00	14305466.46	762067.70	N 39 21 3.00	W 108 6 24.72
	2900.00	0.00	159.15	2898.19	7.32	-47.27	18.00	0.00	14305466.46	762067.70	N 39 21 3.00	W 108 6 24.72
	3000.00	0.00	159.15	2998.19	7.32	-47.27	18.00	0.00	14305466.46	762067.70	N 39 21 3.00	W 108 6 24.72
	3100.00	0.00	159.15	3098.19	7.32	-47.27	18.00	0.00	14305466.46	762067.70	N 39 21 3.00	W 108 6 24.72
	3200.00	0.00	159.15	3198.19	7.32	-47.27	18.00	0.00	14305466.46	762067.70	N 39 21 3.00	W 108 6 24.72
	3300.00	0.00	159.15	3298.19	7.32	-47.27	18.00	0.00	14305466.46	762067.70	N 39 21 3.00	W 108 6 24.72
	3400.00	0.00	159.15	3398.19	7.32	-47.27	18.00	0.00	14305466.46	762067.70	N 39 21 3.00	W 108 6 24.72
	3500.00	0.00	159.15	3498.19	7.32	-47.27	18.00	0.00	14305466.46	762067.70	N 39 21 3.00	W 108 6 24.72
	3600.00	0.00	159.15	3598.19	7.32	-47.27	18.00	0.00	14305466.46	762067.70	N 39 21 3.00	W 108 6 24.72
	3700.00	0.00	159.15	3698.19	7.32	-47.27	18.00	0.00	14305466.46	762067.70	N 39 21 3.00	W 108 6 24.72
Top Gas	3704.00	0.00	159.15	3702.19	7.32	-47.27	18.00	0.00	14305466.46	762067.70	N 39 21 3.00	W 108 6 24.72
	3800.00	0.00	159.15	3798.19	7.32	-47.27	18.00	0.00	14305466.46	762067.70	N 39 21 3.00	W 108 6 24.72
	3900.00	0.00	159.15	3898.19	7.32	-47.27	18.00	0.00	14305466.46	762067.70	N 39 21 3.00	W 108 6 24.72
	4000.00	0.00	159.15	3998.19	7.32	-47.27	18.00	0.00	14305466.46	762067.70	N 39 21 3.00	W 108 6 24.72
	4100.00	0.00	159.15	4098.19	7.32	-47.27	18.00	0.00	14305466.46	762067.70	N 39 21 3.00	W 108 6 24.72
	4200.00	0.00	159.15	4198.19	7.32	-47.27	18.00	0.00	14305466.46	762067.70	N 39 21 3.00	W 108 6 24.72
	4300.00	0.00	159.15	4298.19	7.32	-47.27	18.00	0.00	14305466.46	762067.70	N 39 21 3.00	W 108 6 24.72
	4400.00	0.00	159.15	4398.19	7.32	-47.27	18.00	0.00	14305466.46	762067.70	N 39 21 3.00	W 108 6 24.72
	4500.00	0.00	159.15	4498.19	7.32	-47.27	18.00	0.00	14305466.46	762067.70	N 39 21 3.00	W 108 6 24.72
	4600.00	0.00	159.15	4598.19	7.32	-47.27	18.00	0.00	14305466.46	762067.70	N 39 21 3.00	W 108 6 24.72
Coal Ridge (Paludal)	4602.00	0.00	159.15	4600.19	7.32	-47.27	18.00	0.00	14305466.46	762067.70	N 39 21 3.00	W 108 6 24.72
	4700.00	0.00	159.15	4698.19	7.32	-47.27	18.00	0.00	14305466.46	762067.70	N 39 21 3.00	W 108 6 24.72
	4800.00	0.00	159.15	4798.19	7.32	-47.27	18.00	0.00	14305466.46	762067.70	N 39 21 3.00	W 108 6 24.72
	4900.00	0.00	159.15	4898.19	7.32	-47.27	18.00	0.00	14305466.46	762067.70	N 39 21 3.00	W 108 6 24.72
Rollins Ss (lles Fm)	4950.00	0.00	159.15	4948.19	7.32	-47.27	18.00	0.00	14305466.46	762067.70	N 39 21 3.00	W 108 6 24.72
	5000.00	0.00	159.15	4998.19	7.32	-47.27	18.00	0.00	14305466.46	762067.70	N 39 21 3.00	W 108 6 24.72
	5100.00	0.00	159.15	5098.19	7.32	-47.27	18.00	0.00	14305466.46	762067.70	N 39 21 3.00	W 108 6 24.72
Cozzette	5198.00	0.00	159.15	5196.19	7.32	-47.27	18.00	0.00	14305466.46	762067.70	N 39 21 3.00	W 108 6 24.72
	5200.00	0.00	159.15	5198.19	7.32	-47.27	18.00	0.00	14305466.46	762067.70	N 39 21 3.00	W 108 6 24.72
	5300.00	0.00	159.15	5298.19	7.32	-47.27	18.00	0.00	14305466.46	762067.70	N 39 21 3.00	W 108 6 24.72
	5400.00	0.00	159.15	5398.19	7.32	-47.27	18.00	0.00	14305466.46	762067.70	N 39 21 3.00	W 108 6 24.72
Corcoran	5459.00	0.00	159.15	5457.19	7.32	-47.27	18.00	0.00	14305466.46	762067.70	N 39 21 3.00	W 108 6 24.72
	5500.00	0.00	159.15	5498.19	7.32	-47.27	18.00	0.00	14305466.46	762067.70	N 39 21 3.00	W 108 6 24.72
	5600.00	0.00	159.15	5598.19	7.32	-47.27	18.00	0.00	14305466.46	762067.70	N 39 21 3.00	W 108 6 24.72
	5700.00	0.00	159.15	5698.19	7.32	-47.27	18.00	0.00	14305466.46	762067.70	N 39 21 3.00	W 108 6 24.72
	5800.00	0.00	159.15	5798.19	7.32	-47.27	18.00	0.00	14305466.46	762067.70	N 39 21 3.00	W 108 6 24.72
	5900.00											

Comments	MD (ft)	Incl (°)	Azim Grid (°)	TVD (ft)	VSEC (ft)	NS (ft)	EW (ft)	DLS (°/100ft)	Northing (ft)	Easting (ft)	Latitude (N/S °'")	Longitude (E/W °'")
Buck Tonave	6325.00	2.98	136.05	6323.12	9.34	-50.08	20.70	2.00	14305463.87	762070.39	N 39 21' 2.97" W 108 8 24.68	
	8400.00	4.48	136.05	8397.96	11.89	-53.58	24.08	2.00	14305460.15	762073.79	N 39 21' 2.93" W 108 8 24.64	
	8500.00	6.48	136.05	8487.50	16.87	-60.46	30.72	2.00	14305453.27	762080.42	N 39 21' 2.87" W 108 8 24.55	
	8600.00	8.48	136.05	8590.84	23.86	-69.84	39.75	2.00	14305443.88	762089.48	N 39 21' 2.78" W 108 8 24.43	
Hold	8675.74	10.00	136.05	8671.39	29.99	-78.59	48.19	2.00	14305435.12	762097.91	N 39 21' 2.70" W 108 8 24.32	
	8700.00	10.00	136.05	8695.28	32.19	-81.83	51.12	0.00	14305432.06	762100.83	N 39 21' 2.67" W 108 8 24.28	
	8800.00	10.00	136.05	8793.77	41.24	-94.13	63.17	0.00	14305418.58	762112.89	N 39 21' 2.55" W 108 8 24.12	
	8900.00	10.00	136.05	8892.25	50.29	-106.63	75.22	0.00	14305407.08	762124.94	N 39 21' 2.43" W 108 8 23.96	
	9000.00	10.00	136.05	8990.73	59.34	-119.13	87.27	0.00	14305394.57	762137.00	N 39 21' 2.31" W 108 8 23.80	
Mancos B	7001.00	10.00	136.05	6991.71	59.43	-119.25	87.39	0.00	14305394.44	762137.12	N 39 21' 2.31" W 108 8 23.80	
	7100.00	10.00	136.05	7069.21	68.39	-131.63	99.32	0.00	14305382.06	762149.05	N 39 21' 2.19" W 108 8 23.54	
	7200.00	10.00	136.05	7187.69	77.44	-144.13	111.36	0.00	14305369.56	762161.11	N 39 21' 2.07" W 108 8 23.49	
	7300.00	10.00	136.05	7286.17	86.49	-156.83	123.41	0.00	14305357.05	762173.16	N 39 21' 1.95" W 108 8 23.33	
	7400.00	10.00	136.05	7384.65	95.54	-169.13	135.46	0.00	14305344.54	762185.22	N 39 21' 1.83" W 108 8 23.17	
Prairie Canyon	7457.00	10.00	136.05	7440.79	100.70	-176.26	142.33	0.00	14305337.41	762192.09	N 39 21' 1.76" W 108 8 23.08	
	7500.00	10.00	136.05	7483.13	104.59	-181.63	147.51	0.00	14305332.04	762197.27	N 39 21' 1.71" W 108 8 23.01	
	7600.00	10.00	136.05	7561.62	113.64	-194.13	158.58	0.00	14305319.53	762209.33	N 39 21' 1.59" W 108 8 22.85	
	7700.00	10.00	136.05	7680.10	122.69	-206.63	171.61	0.00	14305307.02	762221.38	N 39 21' 1.47" W 108 8 22.69	
	7800.00	10.00	136.05	7778.58	131.74	-219.13	183.68	0.00	14305294.52	762233.44	N 39 21' 1.35" W 108 8 22.53	
	7900.00	10.00	136.05	7897.06	140.79	-231.63	195.71	0.00	14305282.01	762245.49	N 39 21' 1.23" W 108 8 22.37	
	8000.00	10.00	136.05	7975.54	149.84	-244.13	207.78	0.00	14305269.50	762257.55	N 39 21' 1.12" W 108 8 22.22	
	8100.00	10.00	136.05	8074.02	158.89	-256.63	219.81	0.00	14305257.00	762269.60	N 39 21' 1.00" W 108 8 22.06	
	8200.00	10.00	136.05	8172.50	167.94	-269.13	231.86	0.00	14305244.49	762281.66	N 39 21' 0.88" W 108 8 21.90	
KOP, Build 8 DLS	8219.87	10.00	136.05	8192.07	169.74	-271.62	234.25	0.00	14305242.01	762284.05	N 39 21' 0.85" W 108 8 21.87	
	8300.00	13.52	109.24	8270.58	181.34	-279.72	247.94	8.00	14305233.90	762297.74	N 39 21' 0.78" W 108 8 21.69	
Niobrara	8302.00	13.64	108.77	8272.51	181.74	-279.87	248.38	8.00	14305233.75	762297.74	N 39 21' 0.78" W 108 8 21.69	
	8400.00	20.01	92.67	8366.32	207.83	-284.38	276.11	8.00	14305229.24	762325.93	N 39 21' 0.74" W 108 8 21.33	
	8500.00	27.29	84.30	8457.88	247.17	-282.90	316.08	8.00	14305230.72	762365.92	N 39 21' 0.77" W 108 8 20.82	
	8600.00	34.87	79.31	8543.48	298.59	-275.31	367.06	8.00	14305238.32	762416.93	N 39 21' 0.86" W 108 8 20.18	
	8700.00	42.59	75.93	8621.44	361.08	-261.75	428.07	8.00	14305251.87	762477.97	N 39 21' 1.02" W 108 8 19.41	
	8800.00	50.38	73.42	8690.25	433.44	-242.51	497.62	8.00	14305271.13	762547.85	N 39 21' 1.23" W 108 8 18.53	
	8900.00	58.21	71.42	8748.56	514.26	-217.93	575.25	8.00	14305295.72	762625.21	N 39 21' 1.50" W 108 8 17.55	
	9000.00	66.08	69.74	8795.25	601.95	-188.52	658.54	8.00	14305325.15	762708.55	N 39 21' 1.82" W 108 8 16.51	
	9100.00	73.95	68.25	8829.41	694.82	-154.83	746.19	8.00	14305358.85	762796.24	N 39 21' 2.18" W 108 8 15.40	
	9200.00	81.84	66.88	8850.36	791.06	-117.52	836.49	8.00	14305396.17	762886.58	N 39 21' 2.58" W 108 8 14.27	
Landing Point	9282.01	88.31	65.79	8857.40	871.19	-84.74	911.28	8.00	14305428.98	762961.41	N 39 21' 2.93" W 108 8 13.34	
	9300.00	88.31	65.79	8867.93	886.79	-77.37	927.68	0.00	14305436.35	762977.81	N 39 21' 3.01" W 108 8 13.13	
	9400.00	88.31	65.79	8880.88	966.88	-36.38	1018.84	0.00	14305477.38	763069.02	N 39 21' 3.44" W 108 8 11.96	
	9500.00	88.31	65.79	8893.83	1084.57	4.82	1110.01	0.00	14305518.37	763160.23	N 39 21' 3.88" W 108 8 10.85	
	9600.00	88.31	65.79	8906.78	1182.46	45.81	1201.18	0.00	14305559.38	763251.44	N 39 21' 4.31" W 108 8 9.70	
	9700.00	88.31	65.79	8919.73	1280.34	86.80	1292.34	0.00	14305600.39	763342.65	N 39 21' 4.75" W 108 8 8.56	
	9800.00	88.31	65.79	8932.68	1378.23	127.59	1383.51	0.00	14305641.40	763433.86	N 39 21' 5.19" W 108 8 7.42	
	9900.00	88.31	65.79	8945.63	1476.12	188.58	1474.87	0.00	14305682.41	763525.07	N 39 21' 5.62" W 108 8 6.28	
	10000.00	88.31	65.79	8958.57	1574.00	249.57	1565.84	0.00	14305723.42	763616.28	N 39 21' 6.06" W 108 8 5.14	
	10100.00	88.31	65.79	8971.52	1671.89	310.56	1657.00	0.00	14305764.43	763707.49	N 39 21' 6.49" W 108 8 3.99	
	10200.00	88.31	65.79	8984.47	1769.78	371.55	1748.17	0.00	14305805.44	763798.70	N 39 21' 6.93" W 108 8 2.85	
	10300.00	88.31	65.79	8997.42	1867.67	432.54	1839.33	0.00	14305846.45	763889.90	N 39 21' 7.37" W 108 8 1.71	
	10400.00	88.31	65.79	9010.37	1965.55	493.53	1930.50	0.00	14305887.46	763981.11	N 39 21' 7.80" W 108 8 0.57	
	10500.00	88.31	65.79	9023.32	2063.44	554.52	2021.66	0.00	14305928.47	764072.32	N 39 21' 8.24" W 108 8 59.43	
	10600.00	88.31	65.79	9036.27	2161.33	615.51	2112.83	0.00	14305969.48	764163.53	N 39 21' 8.67" W 108 8 58.28	
	10700.00	88.31	65.79	9049.22	2259.21	676.50	2203.99	0.00	14306010.49	764254.74	N 39 21' 9.11" W 108 8 57.14	
	10800.00	88.31	65.79	9062.17	2357.10	737.49	2295.16	0.00	14306051.50	764345.95	N 39 21' 9.54" W 108 8 56.00	
	10900.00	88.31	65.79	9075.12	2454.99	798.48	2386.32	0.00	14306092.51	764437.16	N 39 21' 9.98" W 108 8 54.86	
	11000.00	88.31	65.79	9088.07	2552.88	859.47	2477.49	0.00	14306133.52	764528.37	N 39 21' 10.42" W 108 8 53.72	
	11100.00	88.31	65.79	9101.02	2650.78	920.46	2568.65	0.00	14306174.53	764619.58	N 39 21' 10.85" W 108 8 52.57	
	11200.00	88.31	65.79	9113.97	2748.65	981.45	2659.82	0.00	14306215.54	764710.79	N 39 21' 11.28" W 108 8 51.43	
	11300.00	88.31	65.79	9126.92	2846.55	1042.44	2750.98	0.00	14306256.55	764801.99	N 39 21' 11.72" W 108 8 50.29	
	11400.00	88.31	65.79	9139.87	2944.42	1103.43	2842.15	0.00	14306297.56	764893.20	N 39 21' 12.16" W 108 8 49.15	
	11500.00	88.31	65.79	9152.81	3042.31	1164.42	2933.31	0.00	14306338.57	764984.41	N 39 21' 12.59" W 108 8 48.01	
	11600.00	88.31	65.79	9165.76	3140.20	1225.41	3024.48	0.00	14306379.58	765075.62	N 39 21' 13.03" W 108 8 46.86	
	11700.00	88.31	65.79	9178.71	3238.09	1286.40	3115.64	0.00	14306420.59	765166.83	N 39 21' 13.47" W 108 8 45.72	
	11800.00	88.31	65.79	9191.66	3335.97	1347.39	3206.81	0.00	14306461.60	765258.04	N 39 21' 13.90" W 108 8 44.58	
	11900.00	88.31	65.79	9204.61	3433.86	1408.38	3297.97	0.00	14306502.61	765349.25	N 39 21' 14.34" W 108 8 43.44	
	12000.00	88.31	65.79	9217.56	3531.75	1469.37	3389.14	0.00	14306543.62	765440.46	N 39 21' 14.77" W 108 8 42.30	
	12100.00	88.31	65.79	9230.51	3629.64	1530.36	3480.30	0.00	14306584.63	765531.67	N 39 21' 15.21" W 108 8 41.15	
	12200.00	88.31	65.79	9243.46	3727.52	1591.35	3571.47	0.00	14306625.64	765622.88	N 39 21' 15.65" W 108 8 40.01	
	12300.00	88.31	65.79	9256.41	3825.41	1652.34	3662.64	0.00	14306666.65	765714.08	N 39 21' 16.08" W 108 8 38.87	
	12400.00	88.31	65.79	9269.36	3923.30	1713.33	3753.80	0.00	14306707.66	765805.29	N 39 21' 16.52" W 108 8 37.73	
	12500.00	88.31	65.79	9282.31	4021.18	1774.32	3844.97	0.00	14306748.68	765896.50	N 39 21' 16.95" W 108 8 36.59	
	12600.00	88.31	65.79	9295.26	4119.07	1835.31	3936.13	0.00	14306789.69	765987.71	N 39 21' 17.39" W 108 8 35.44	
	12700.00	88.31	65.79	9308.21	4216.96	1896.30	4027.30	0.00	14306830.70	766078.92	N 39 21' 17.82" W 108 8 34.30	
	12800.00	88.31	65.79	9321.16	4314.85	1957.29	4118.46	0.00	14306871.71	766170.13	N 39 21' 18.26" W 108 8 33.16	
	12900.00	88.31	65.79	9334.11	4412.73	2018.28	4209.63	0.00	14306912.72	766261.34	N 39 21' 18.70" W 108 8 32.02	
	13000.00	88.31	65.79	9347.06	4510.62	2079.27	4300.79	0.00	14306953.73	766352.55	N 39 21' 19.13" W 108 8 30.88	
	13100.00	88.31	65.79	9360.01	4608.51	2140.26	4391.96	0.00	14306994.74	766443.76	N 39 21' 19.57" W 108	