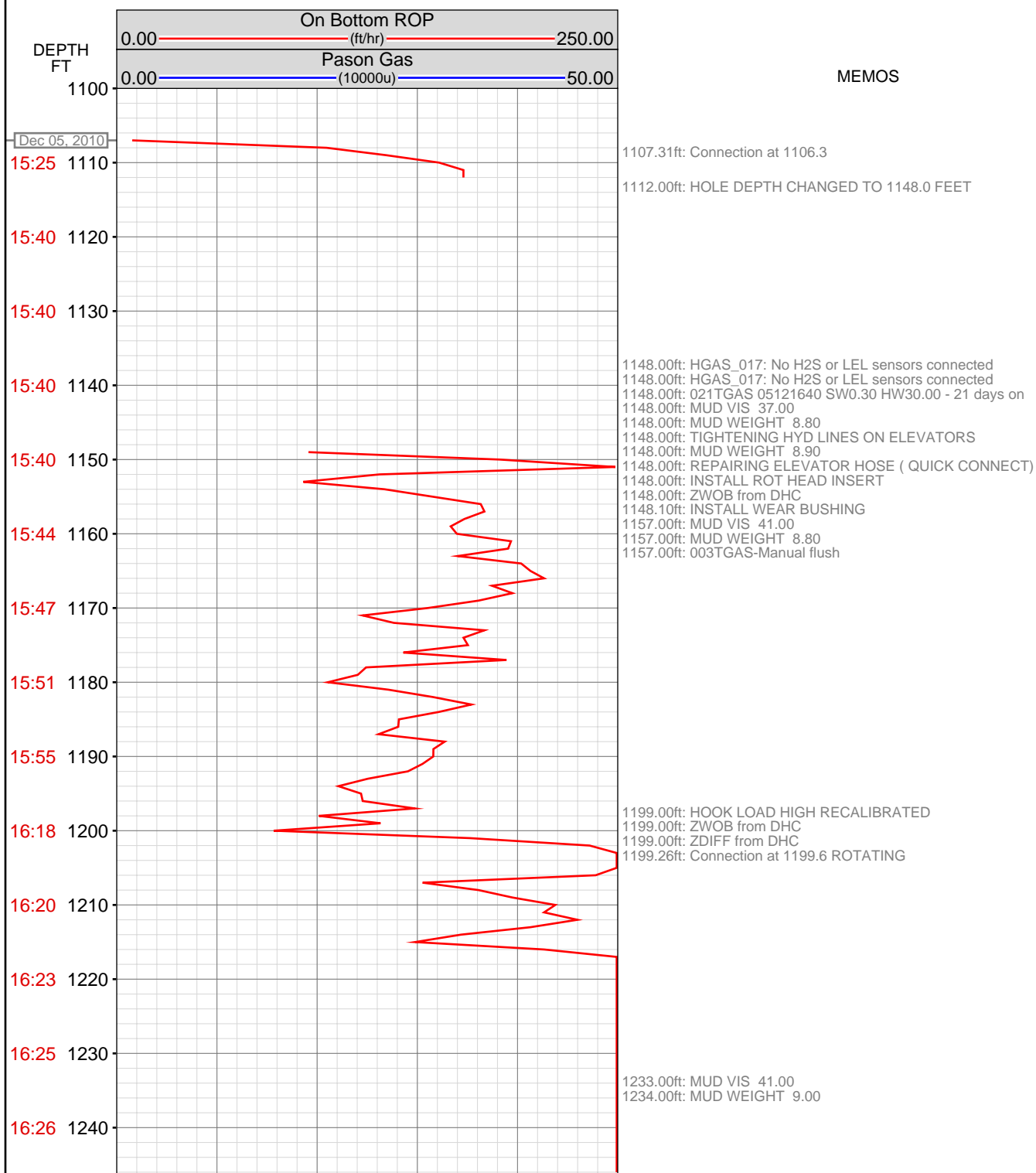
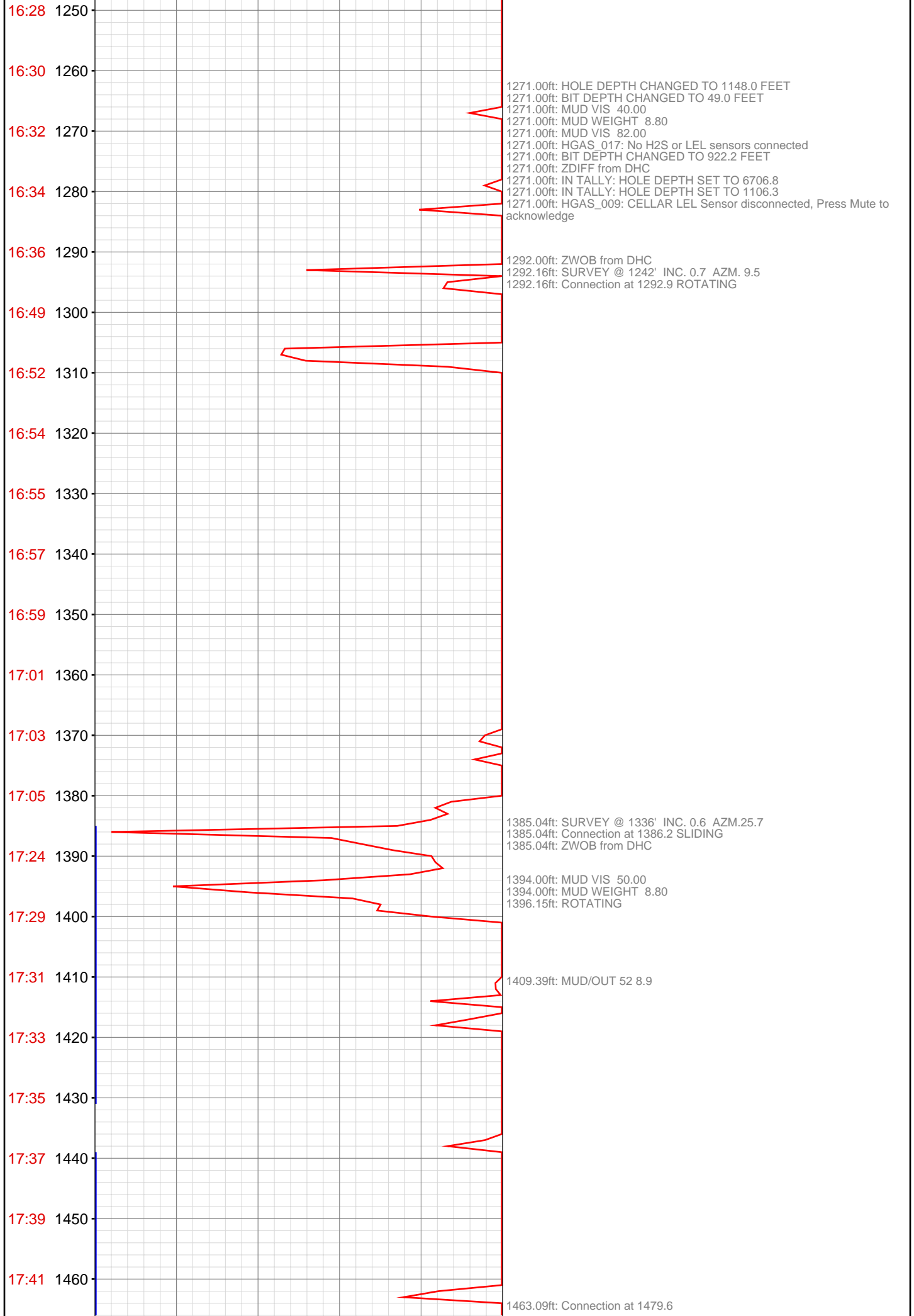
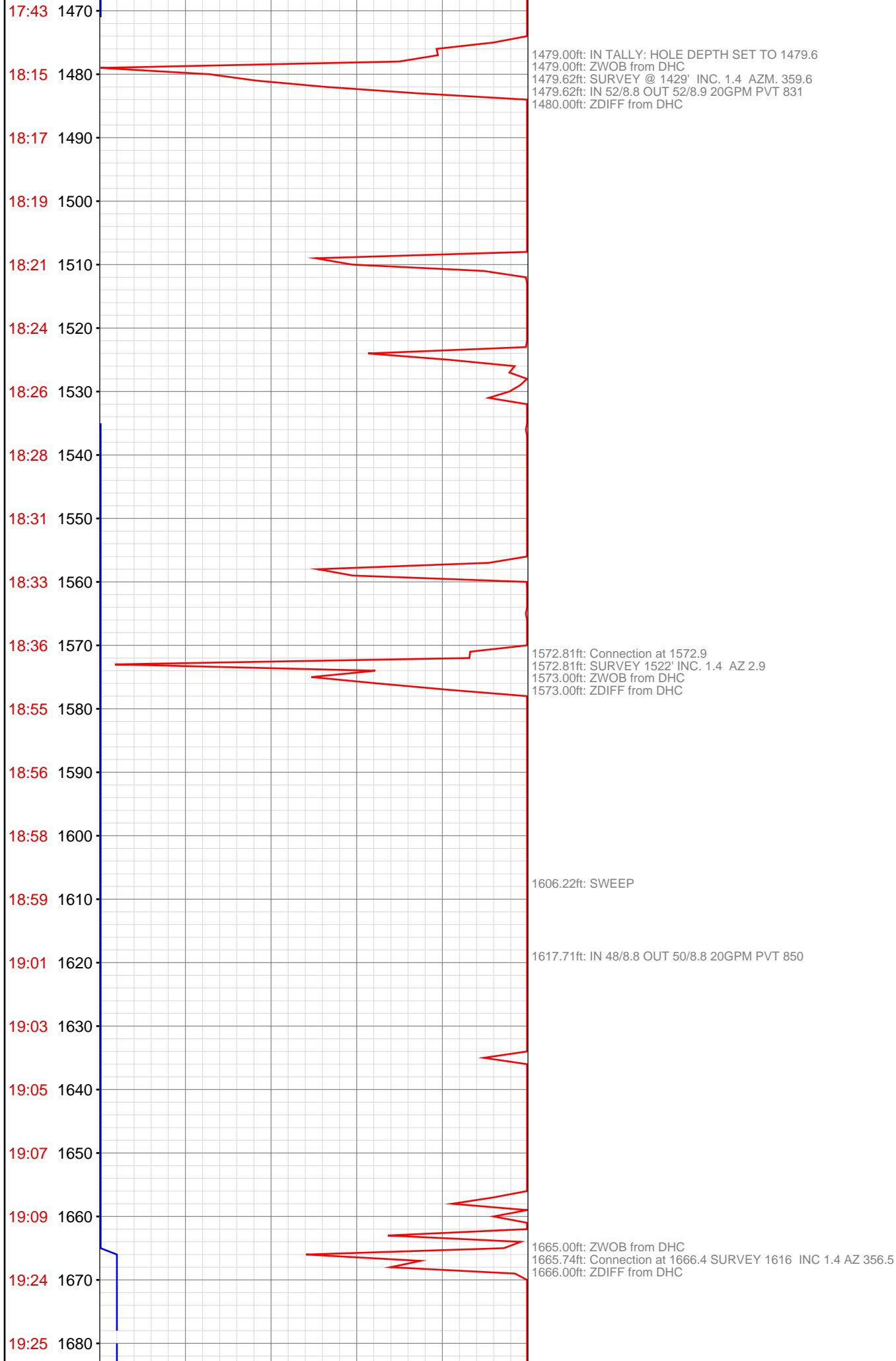


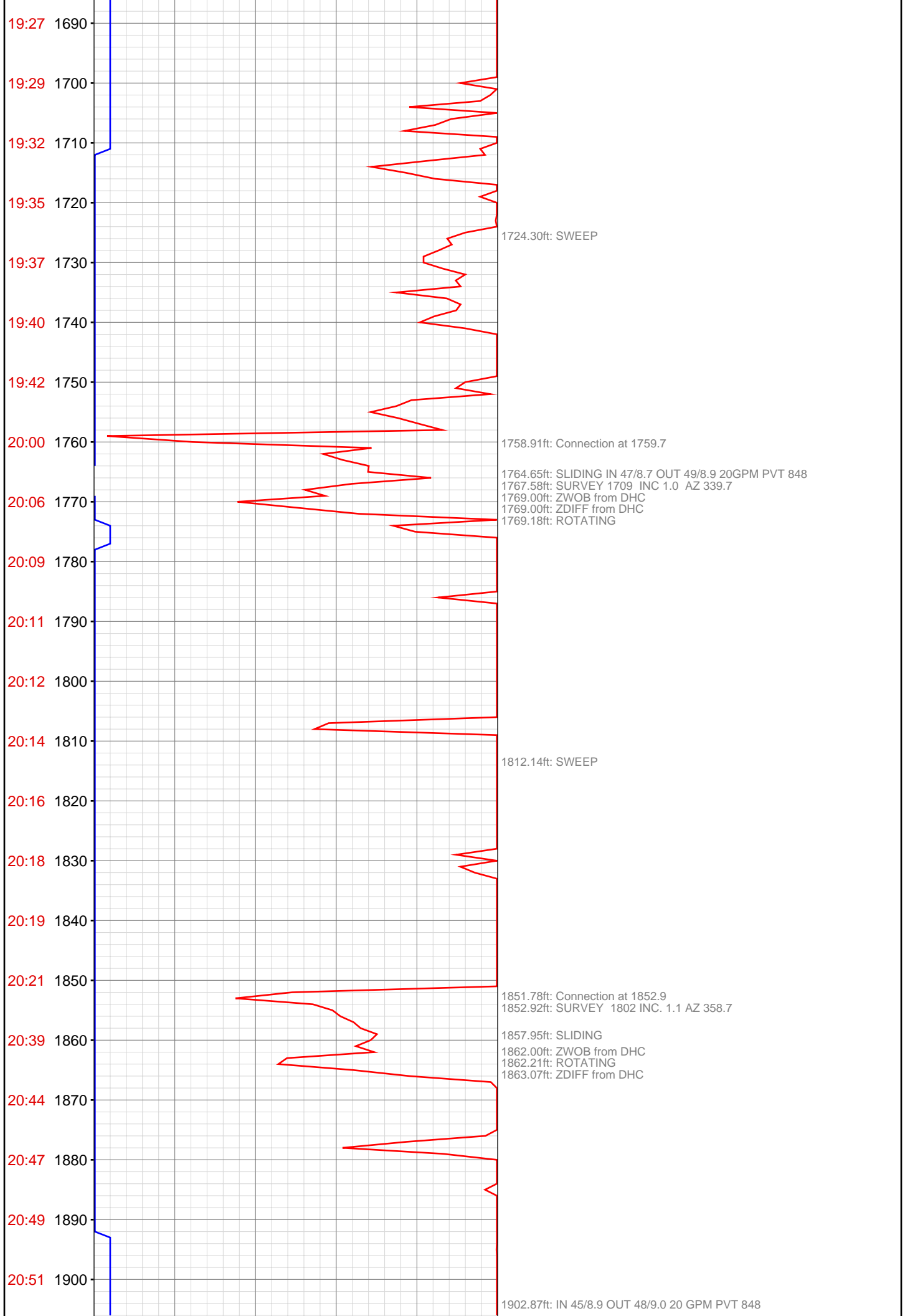
OPERATOR: EnCana Oil & Gas (USA), Inc.
WELL: FEDERAL 25-8 (PH25)
FIELD:
LOCATION: SEC25 T7S R96W
COUNTRY: USA
RIG: Ensign 119

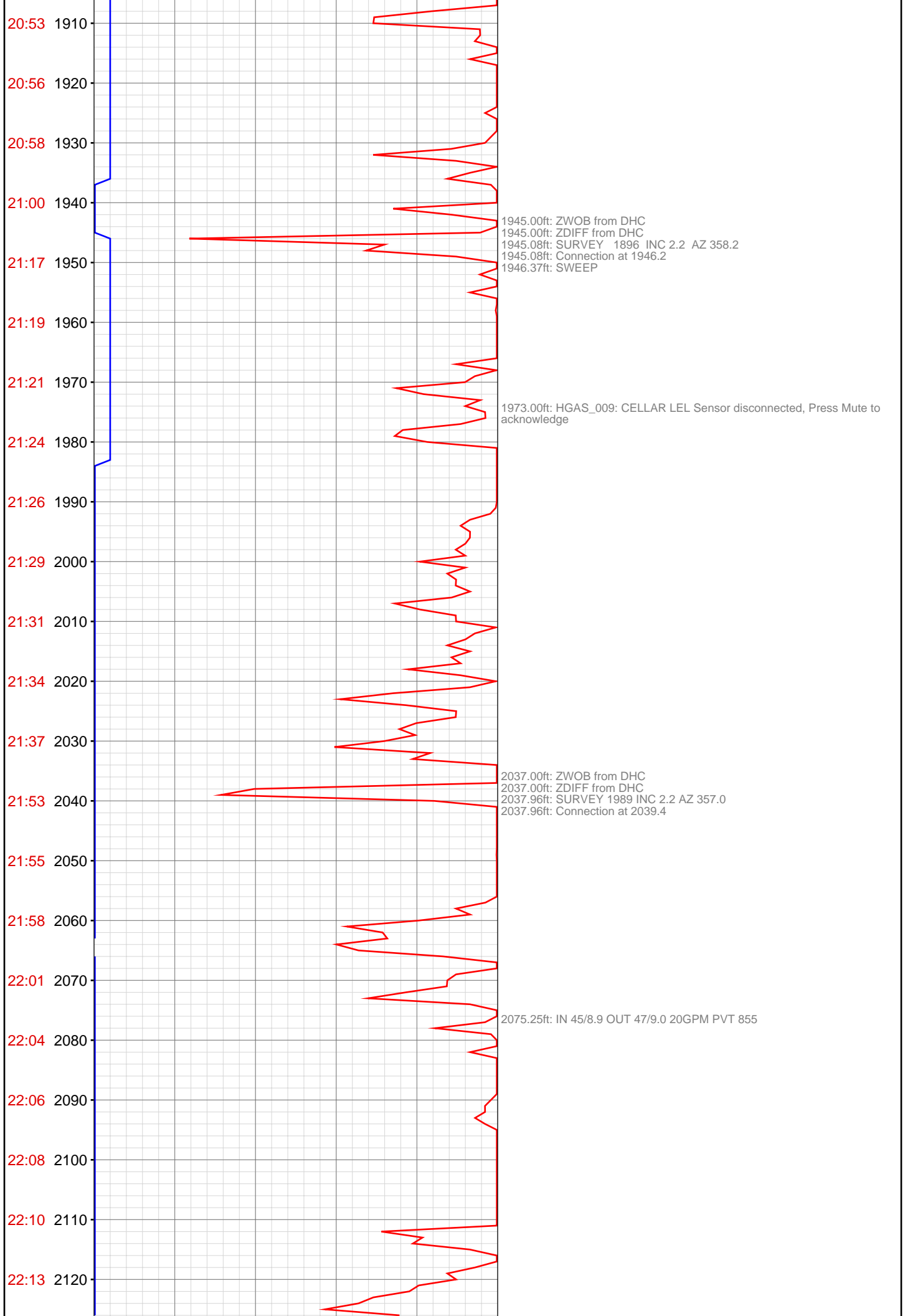
CONTRACTOR: Ensign US Drilling
UNIQUE WELL ID: 05-045-19121-00
SPUD DATE: Dec 05, 2010 15:30
RELEASE DATE: Dec 10, 2010 22:00

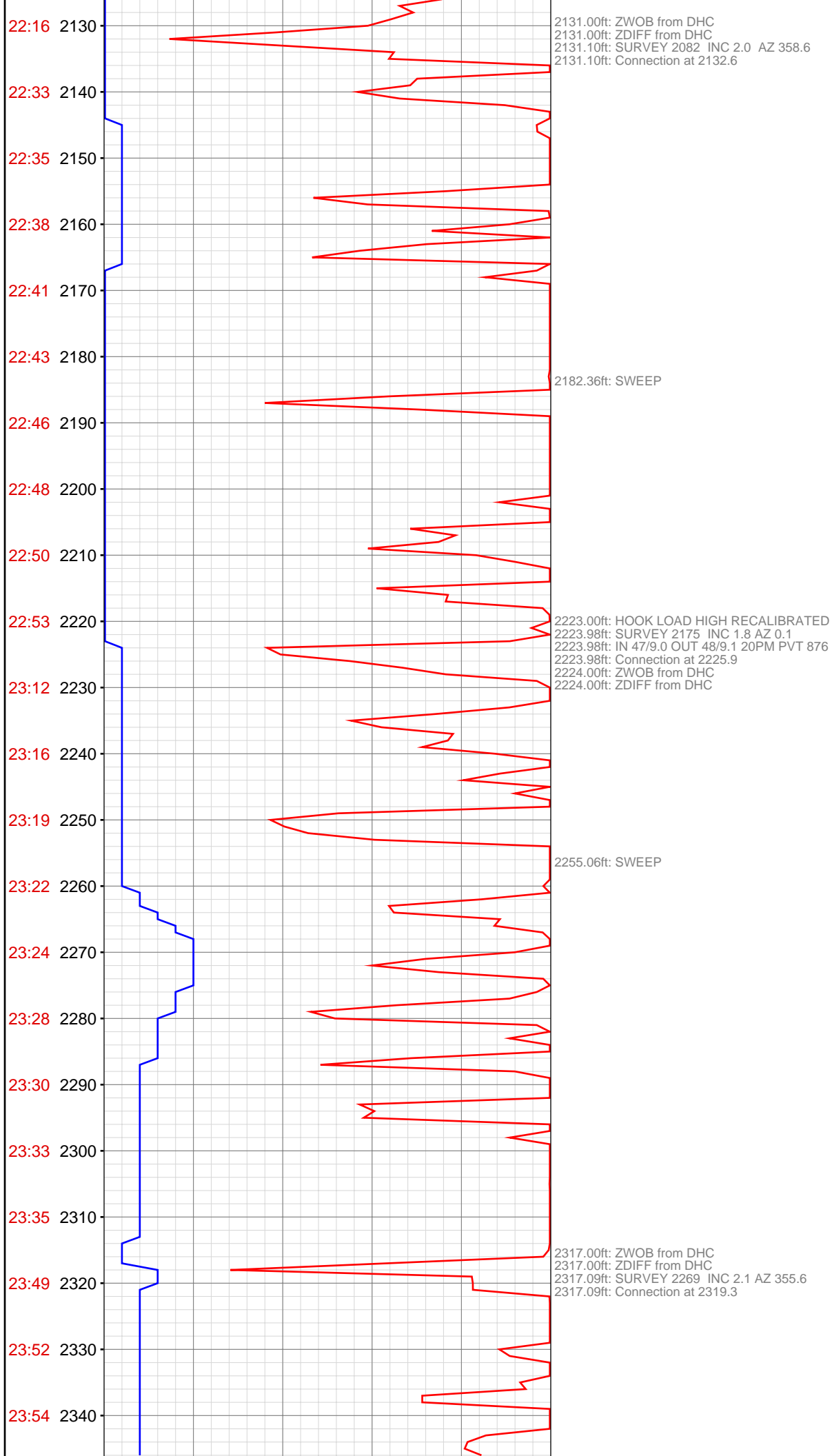


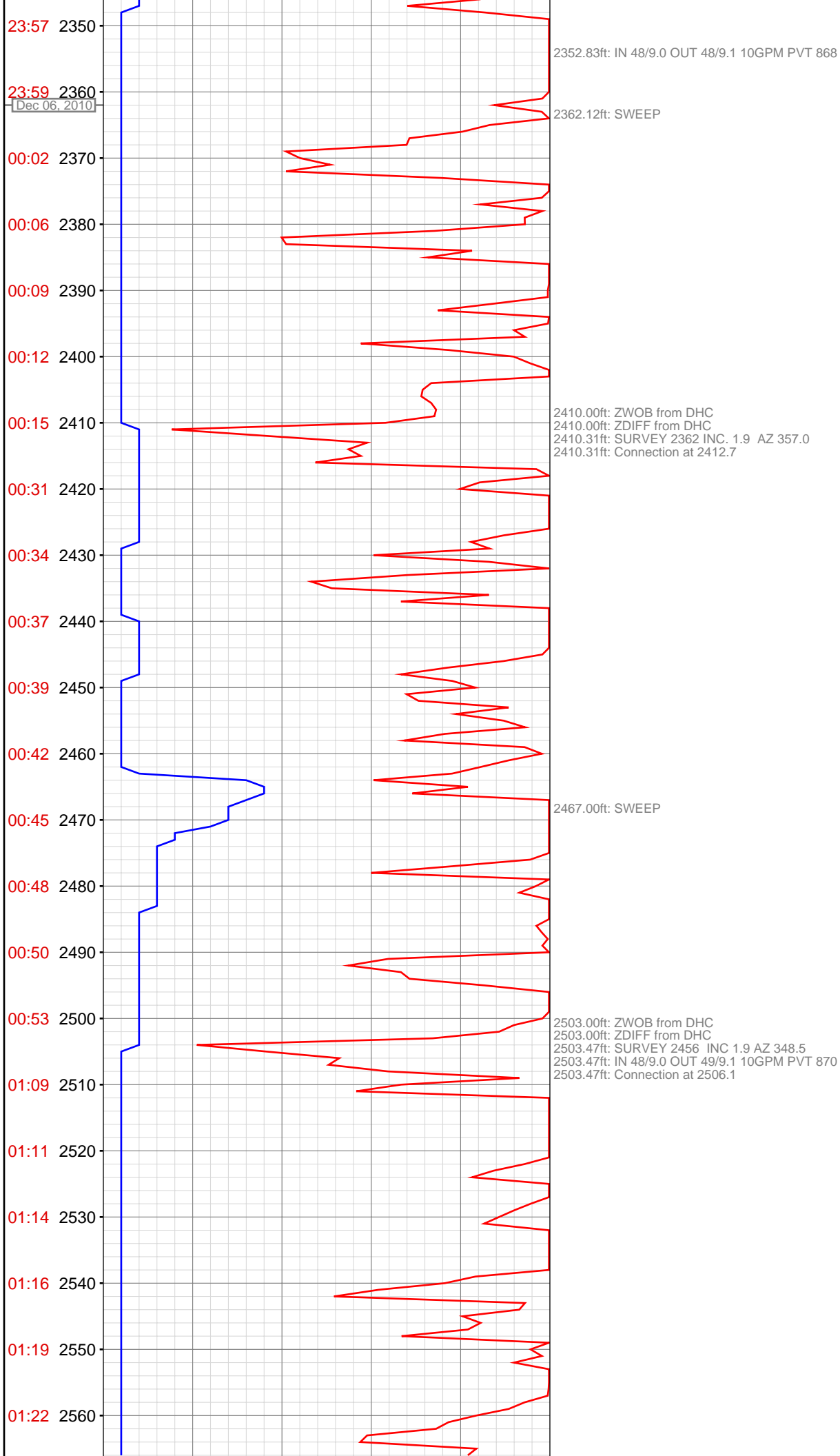


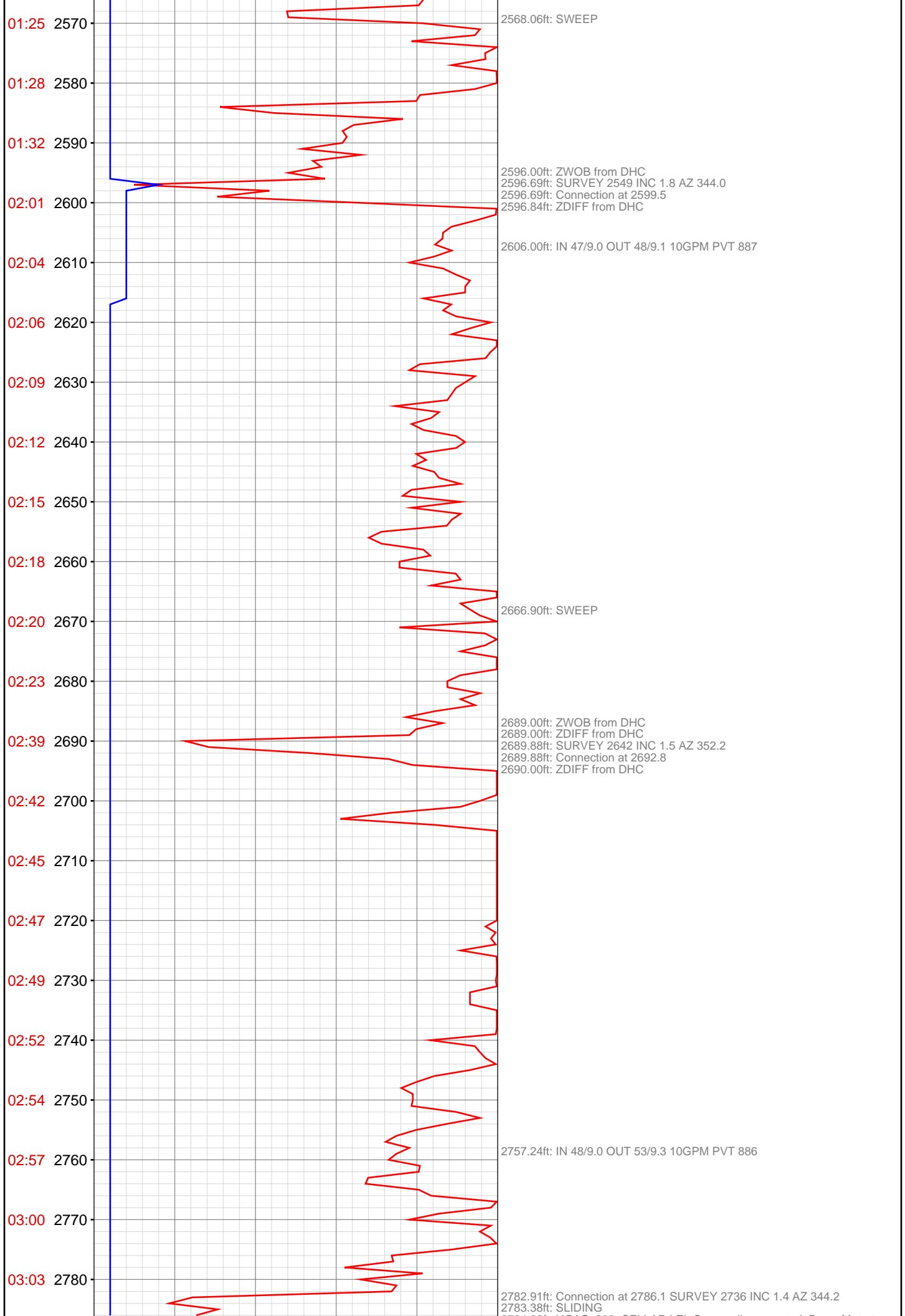












2784.00ft: HGAS_009: CELLAR LEL Sensor disconnected, Press Mute to acknowledge

2793.00ft: ZWOB from DHC
2793.00ft: ZDIFF from DHC
2793.26ft: SWEEP ROTATING

2876.00ft: ZWOB from DHC
2876.00ft: ZDIFF from DHC
2876.26ft: SURVEY 2829 INC 2.2 AZ 350.1
2876.26ft: IN 48/9.1 OUT 52/9.2 10GPM PVT 885
2876.26ft: Connection at 2879.5

2969.00ft: HOOK LOAD LOW RECALIBRATED
2969.00ft: HOOK LOAD HIGH RECALIBRATED
2969.00ft: ZWOB from DHC
2969.00ft: ZDIFF from DHC
2969.32ft: SURVEY 2922 INC 2.1 AZ 342.0
2969.32ft: Connection at 2972.7

3002.49ft: IN 49/9.2 OUT 53/9.2 10GPM PVT 876

