



CEMENT BOND LOG

Mesa Wireline

Company	ENCANA OIL & GAS (USA) INC.		
Well	KENYON 8-6-19		
Field	WATTENBERG		
County	WELD		
State	COLORADO		
Location:		API # : 05123327580000	Other Services NONE
SEC. 19 TWP. 2N RGE. 68W			
Permanent Datum	GROUND LEVEL Elevation 4993'		
Log Measured From	KELLY BUSHING = 12'		
Drilling Measured From	KELLY BUSHING		
Elevation	K.B. 5005' D.F. 5005' G.L. 4993'		

Date	7 MARCH 2011				
Run Number	ONE				
Depth Driller	8277'				
Depth Logger	8251'				
Bottom Logged Interval	8251'				
Top Log Interval	3200'				
Open Hole Size	7.875"				
Type Fluid	WATER				
Density / Viscosity	~8.3#				
Max. Recorded Temp.	N/A				
Estimated Cement Top	3378'				
Time Well Ready	N/A				
Time Logger on Bottom	1030				
Equipment Number	WMO61 / CB08				
Location	AULT				
Recorded By	M. BERNATCHEZ				
Witnessed By	W. HARRISON				
Borehole Record					
Run Number	Bit	From	To	Size	Tubing Record
ONE	12.25"	SURFACE	800'		From To
TWO	7.875"	800'	8277'		
Casing Record	Size		Weight	Top	Bottom
Surface String	4.5"		11.6#	SURFACE	8277'
Prot. String					
Production String					
Liner					

<<< Fold Here >>>

All interpretations are opinions based on inferences from electrical or other measurements and we cannot and do not guarantee the accuracy or correctness of any interpretation, and we shall not, except in the case of gross or willful negligence on our part, be liable or responsible for any loss, costs, damages, or expenses incurred or sustained by anyone resulting from any interpretation made by any of our officers, agents or employees. These interpretations are also subject to our general terms and conditions set out in our current Price Schedule.

Comments

SHORT JOINT: 7350'- 7372'

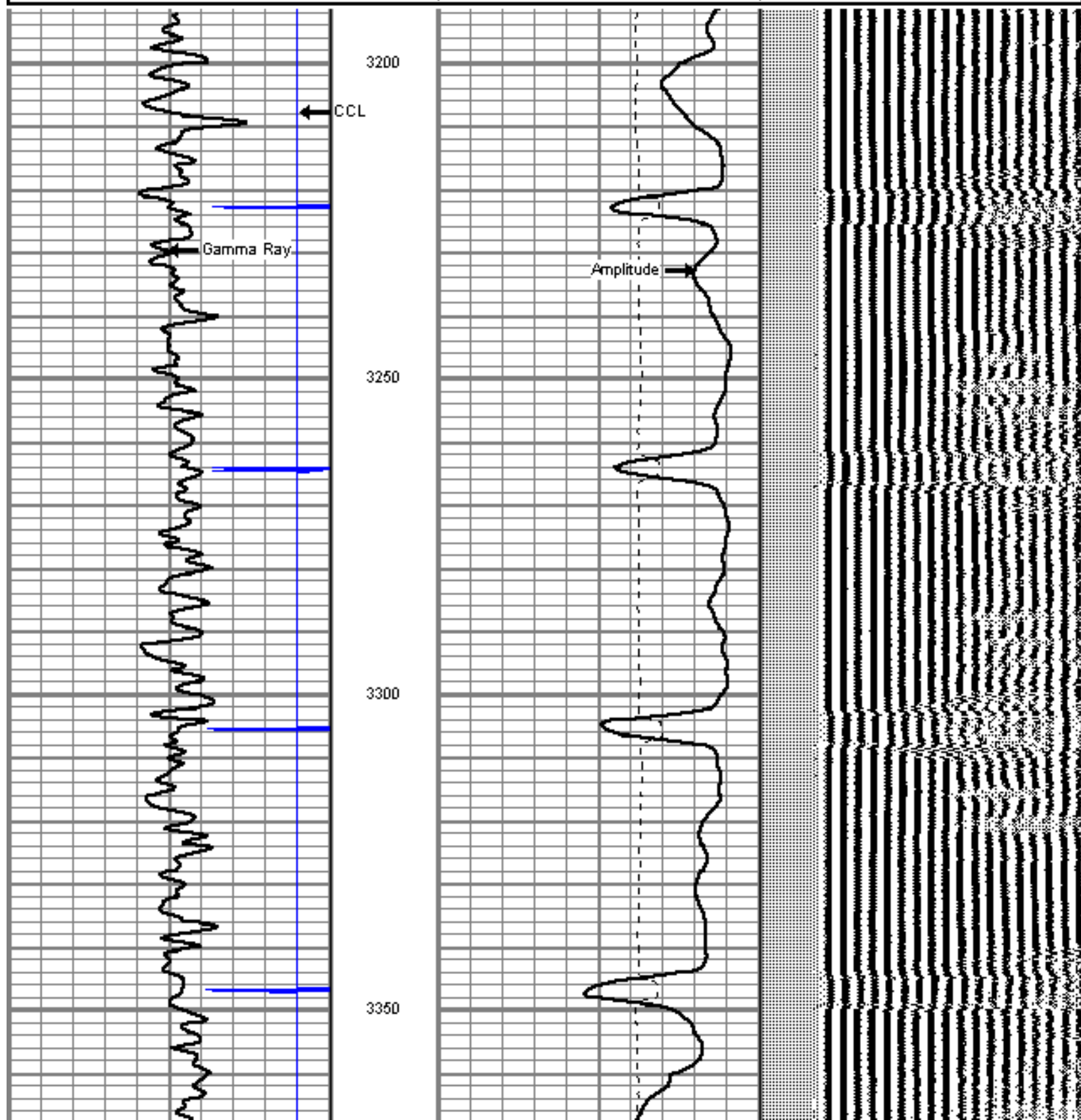
WE APPRECIATE YOUR BUSINESS, MESA WIRELINE LLC, GRAND JUNCTION CO. (970) 257-0

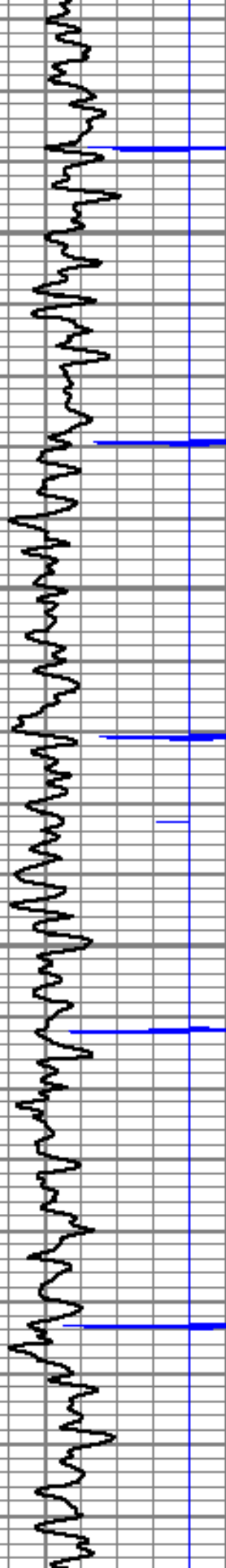


MAIN LOG PASS

Database File: kenyon_8_6_19.db
Dataset Pathname: pass4
Presentation Format: cbl01
Dataset Creation: Mon Mar 07 10:22:33 2011 by Log Std Casedhole 08121
Charted by: Depth in Feet scaled 1:240

9	Collar Locator	-1	0	Amplified Amplitude (mV)	10	200	Variable Density	1200
0	Gamma Ray (GAPI)	150	0	Amplitude (mV)	100			
			200	TT3 (usec)	290			



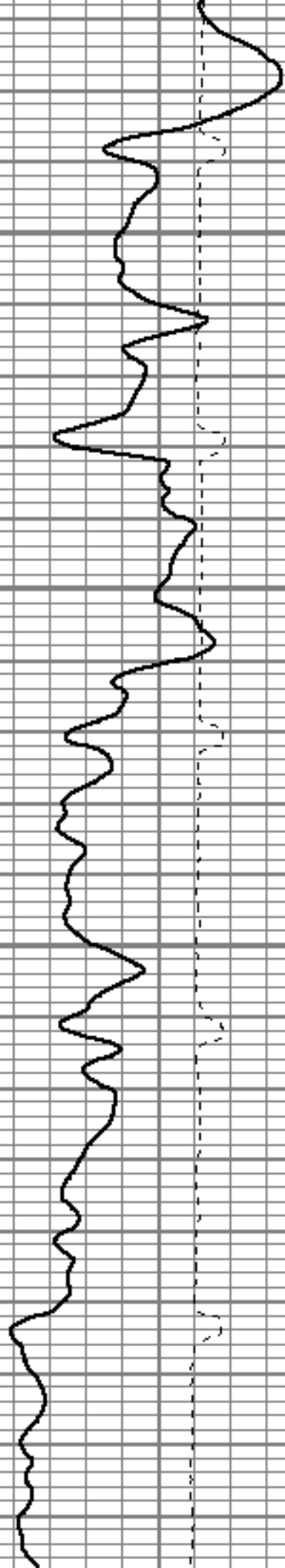


3400

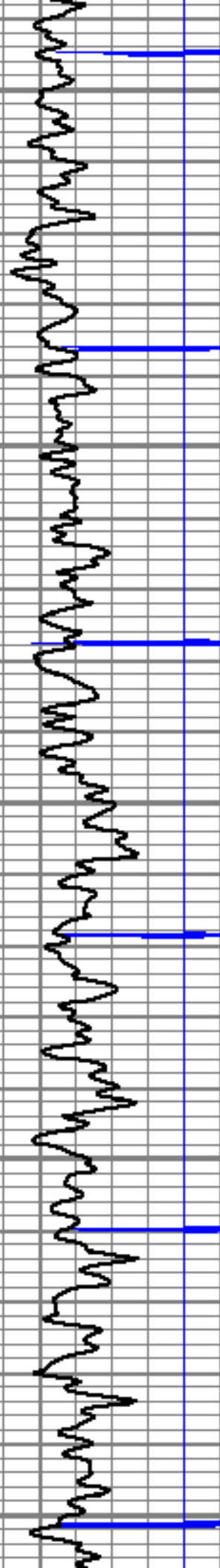
3450

3500

3550



3



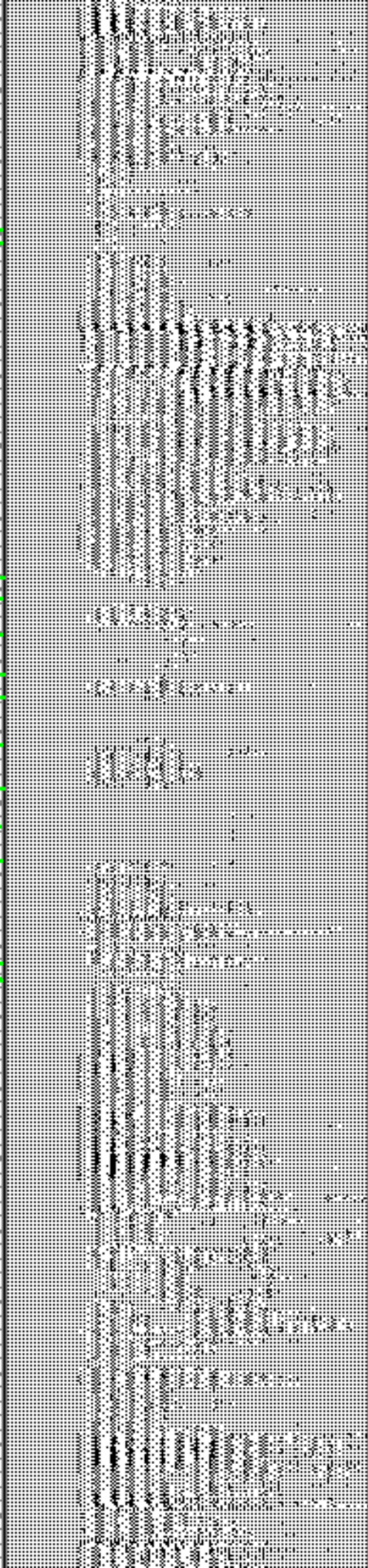
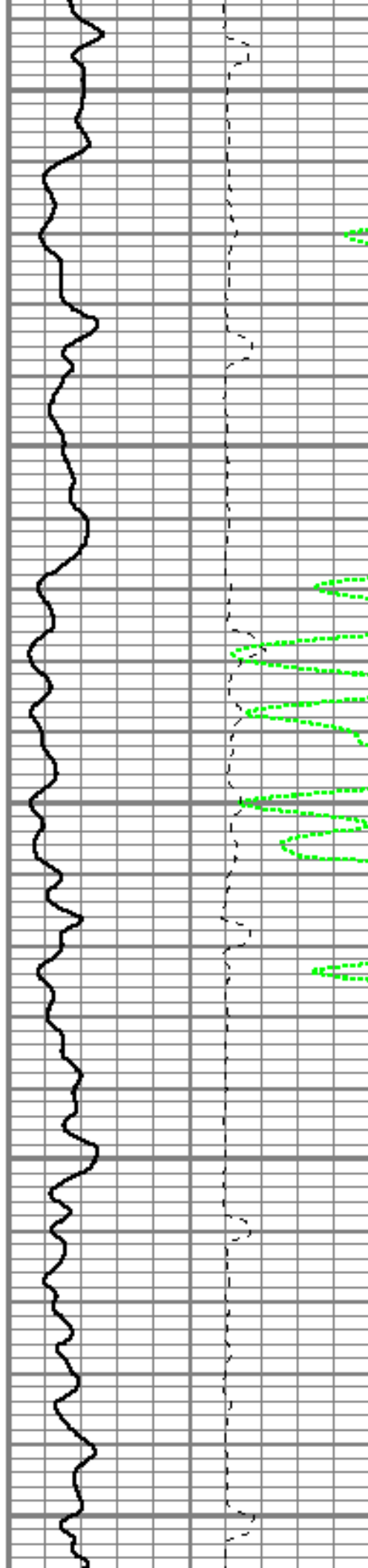
3600

3650

3700

3750

3800



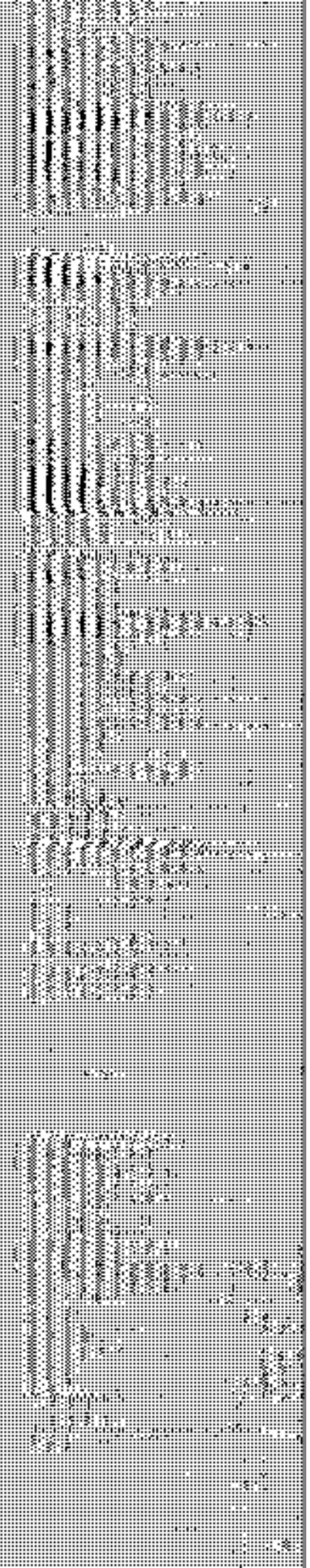
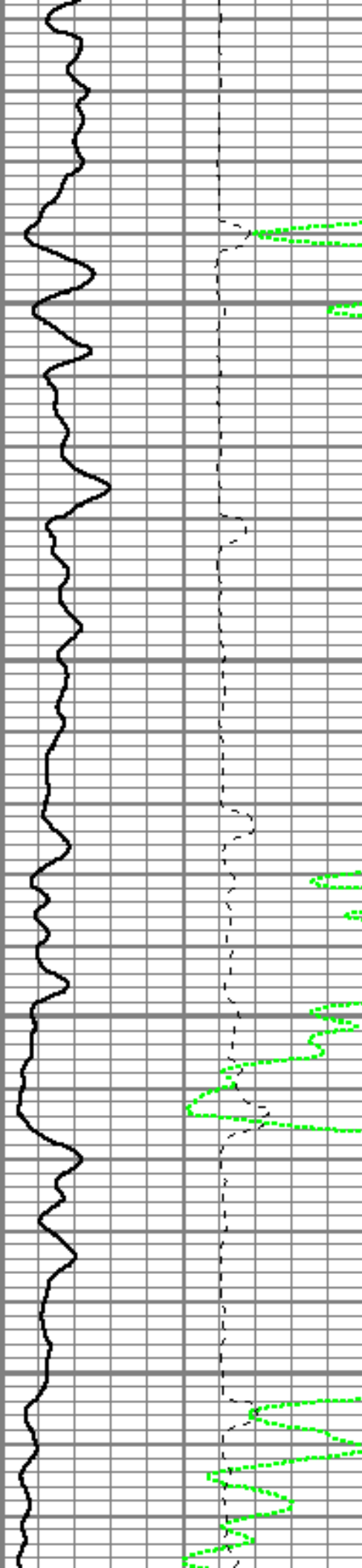


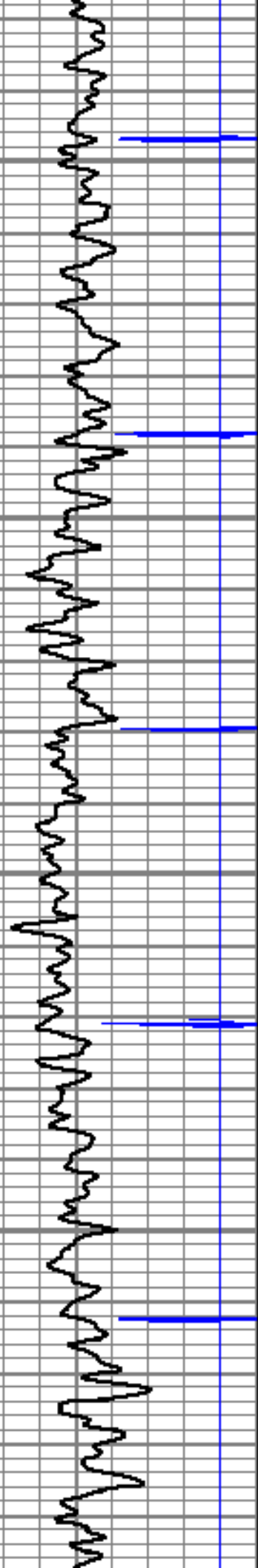
3850

3900

3950

4000



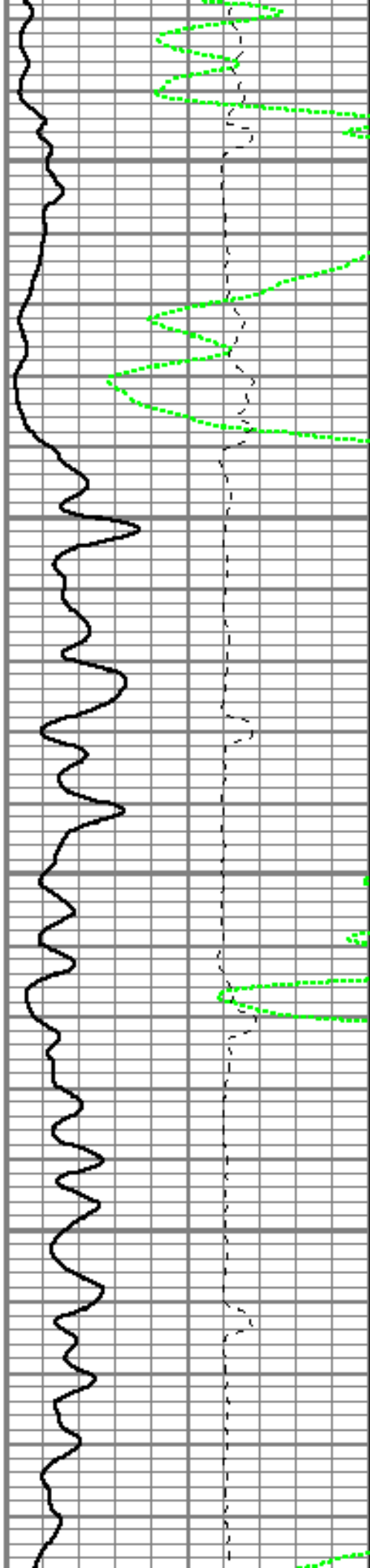


4050

4100

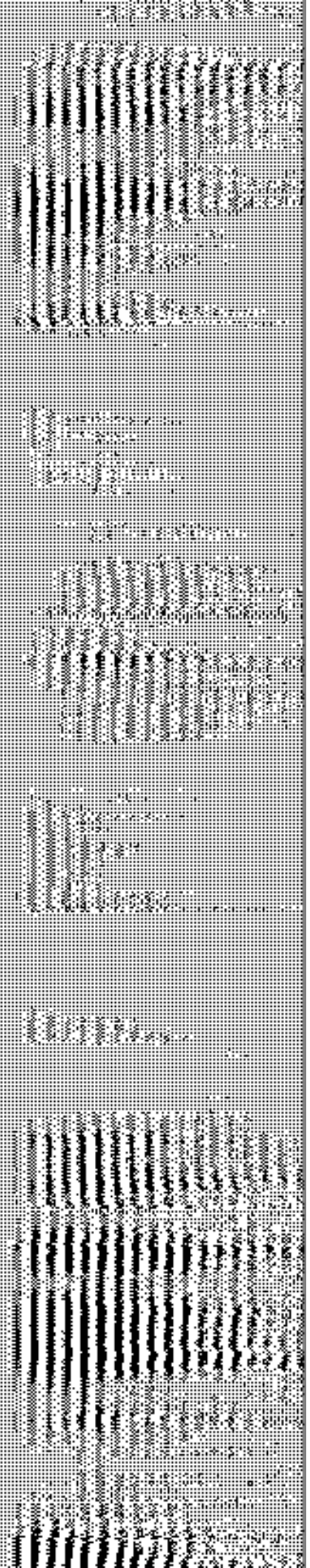
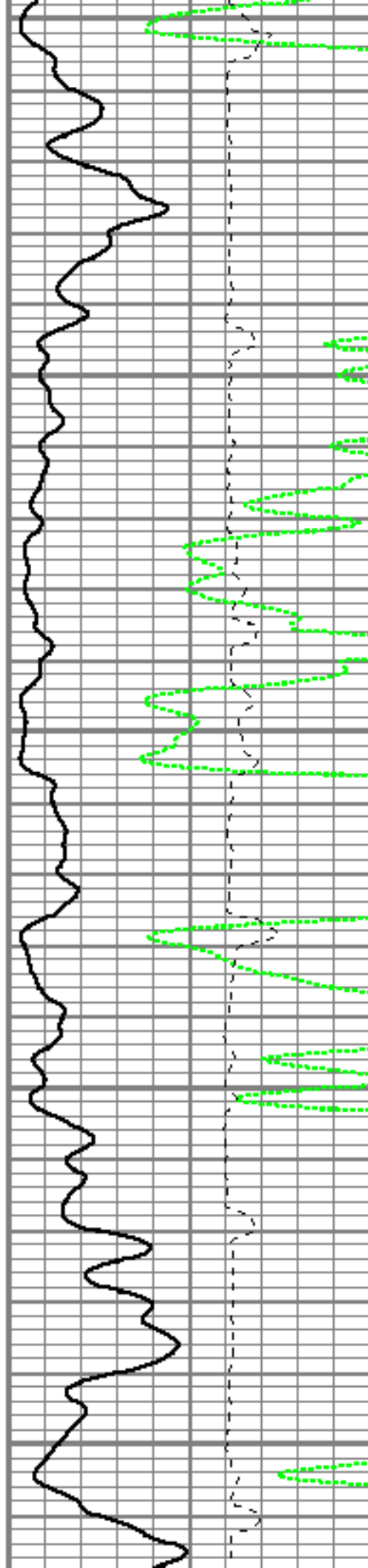
4150

4200





4250
4300
4350
4400
4450



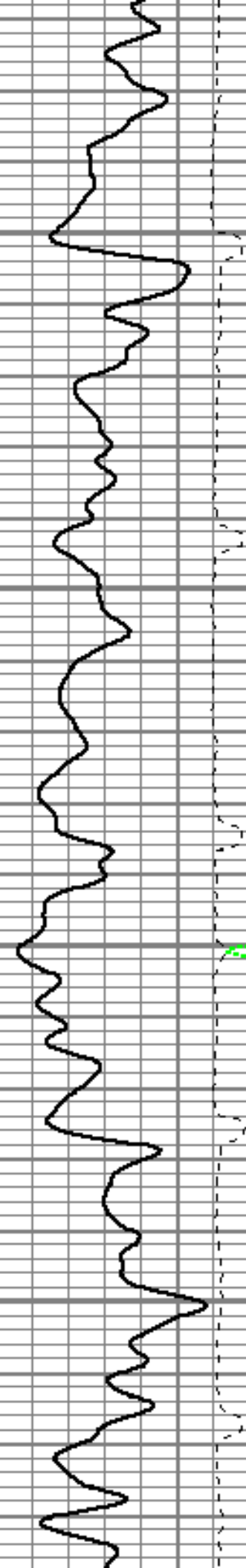


4500

4550

4600

4650





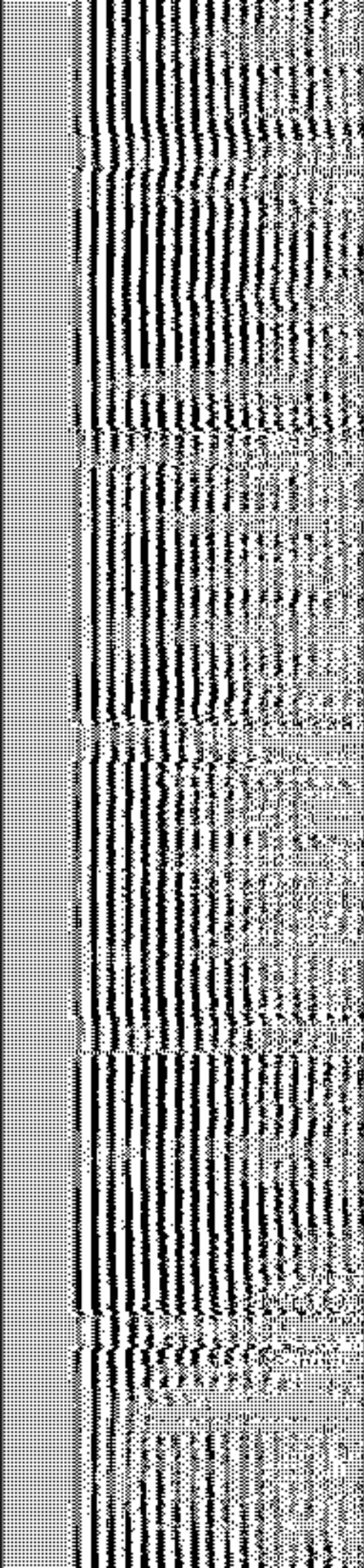
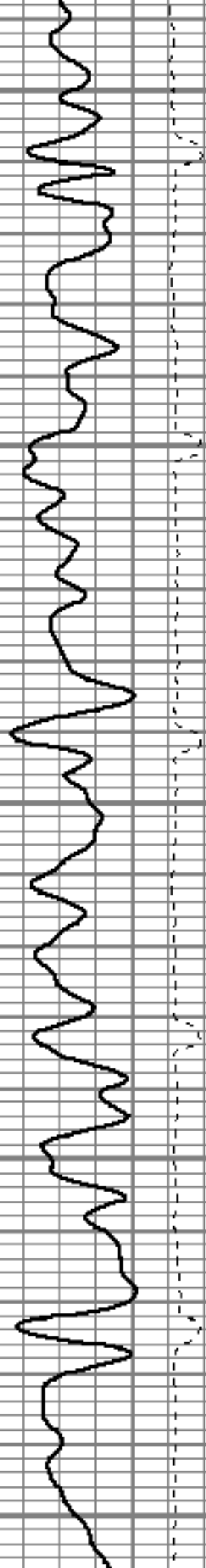
4700

4750

4800

4850

4900



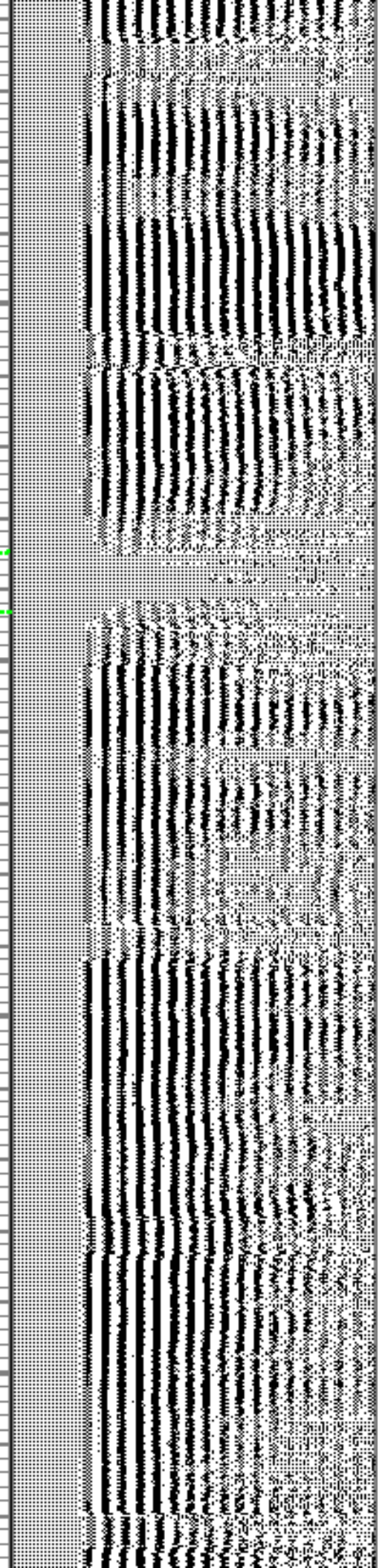
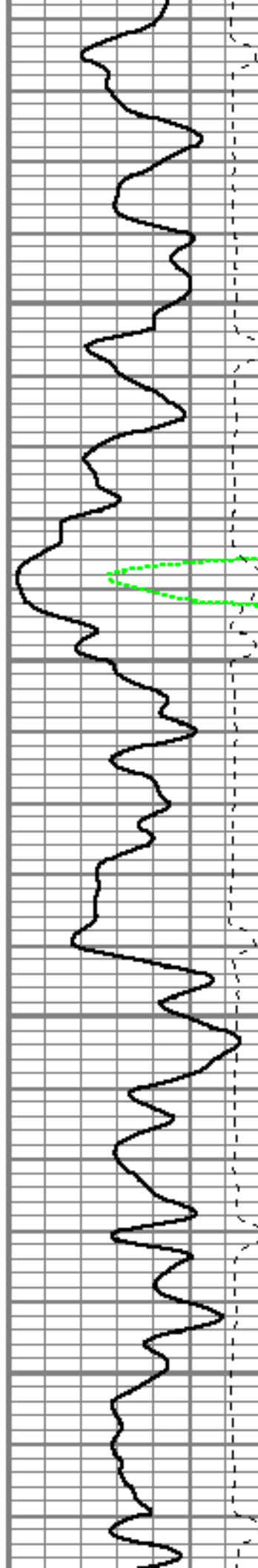


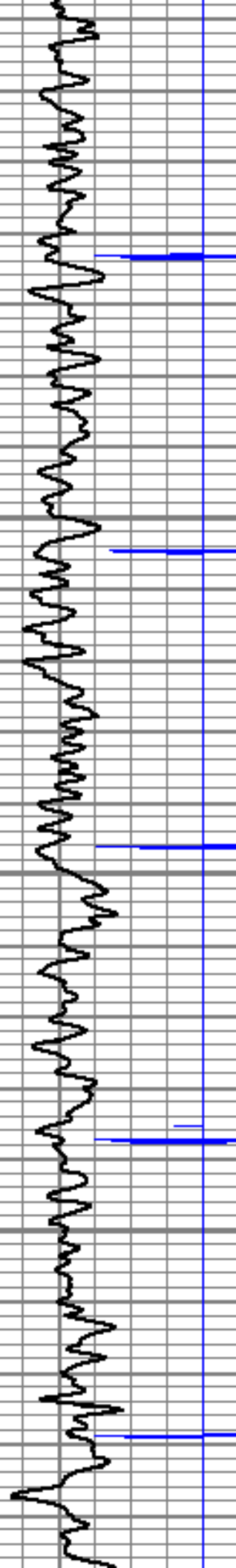
4950

5000

5050

5100



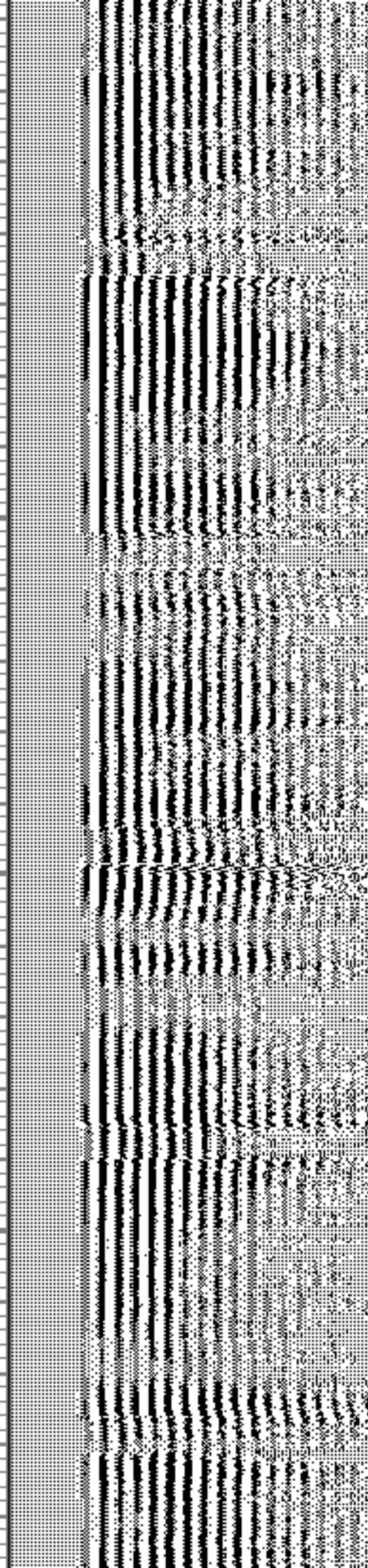
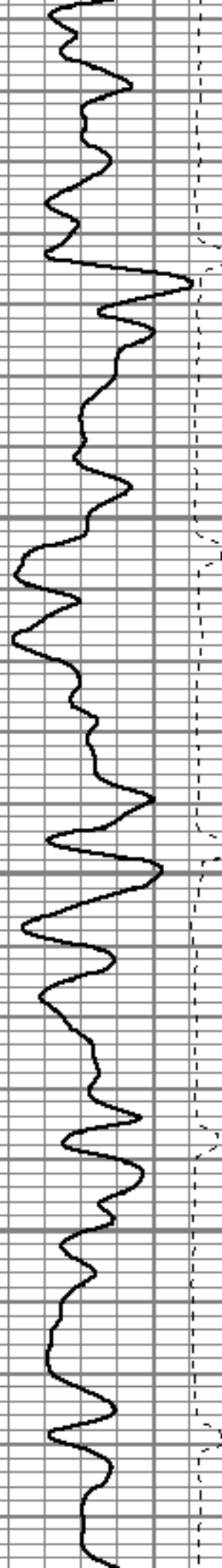


5150

5200

5250

5300





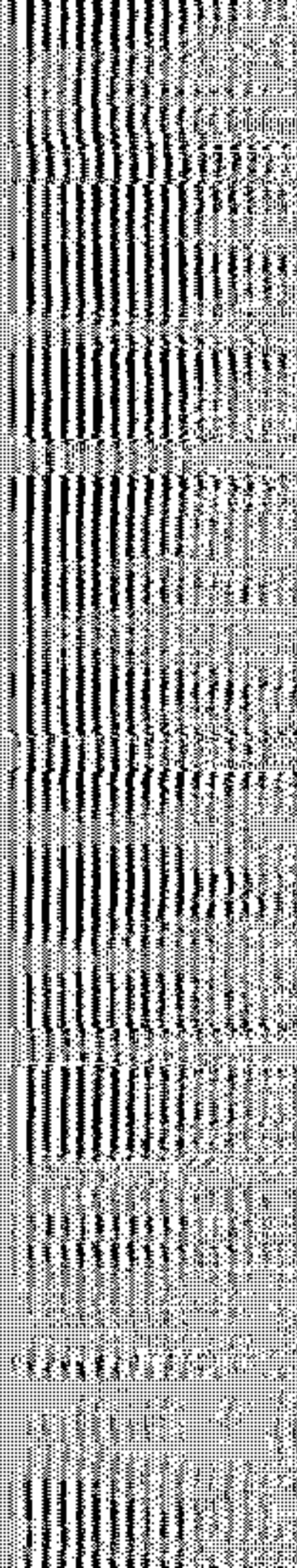
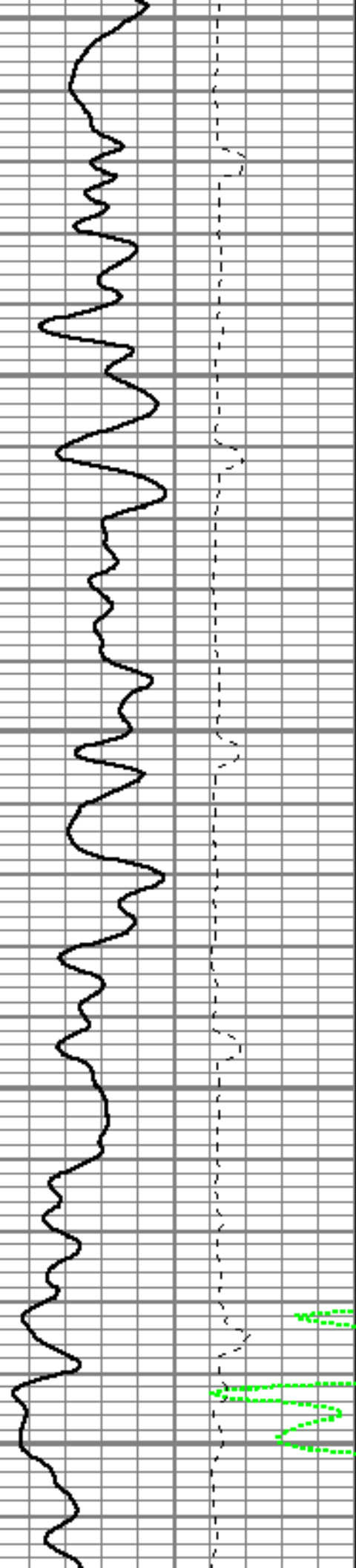
5350

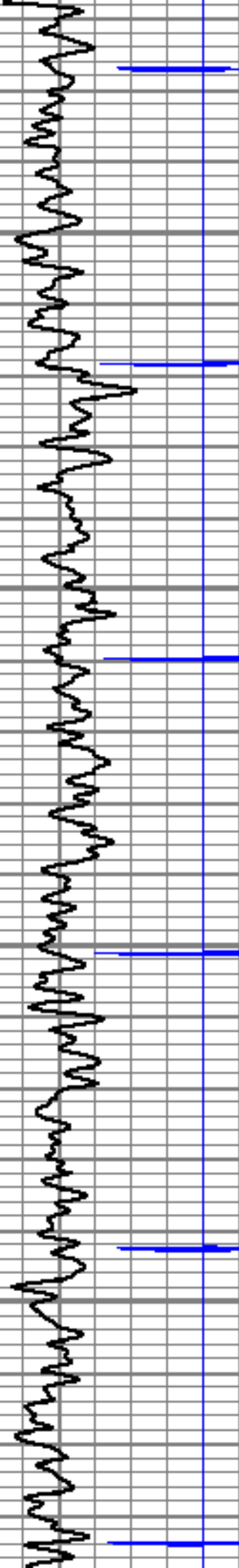
5400

5450

5500

5550



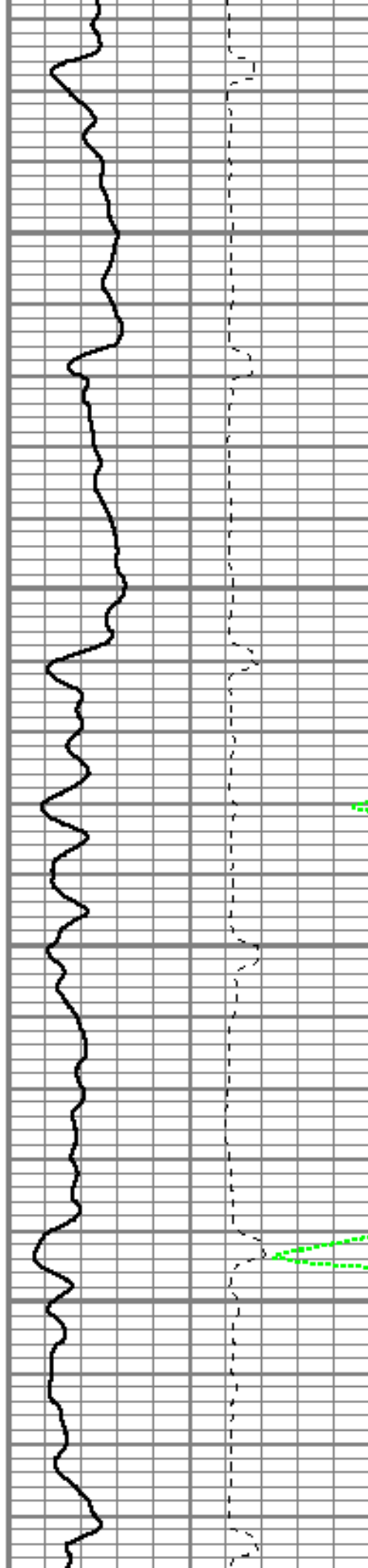


5600

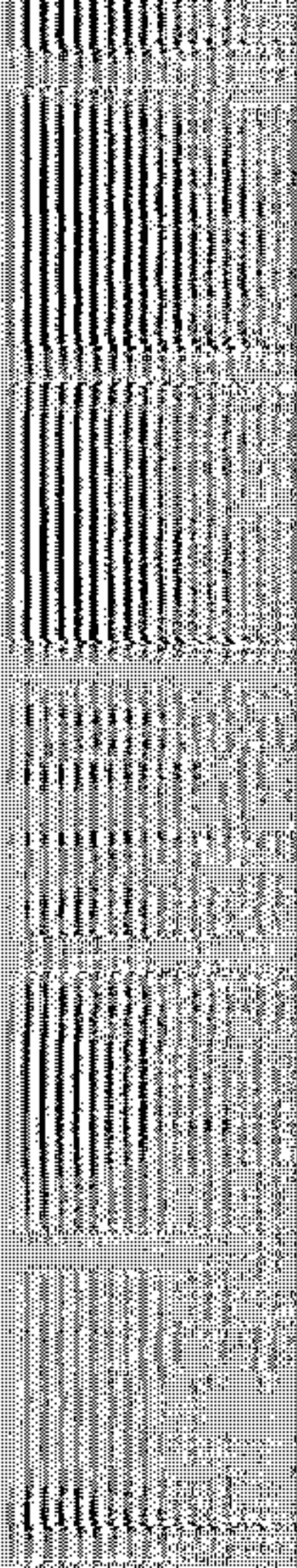
5650

5700

5750



5740





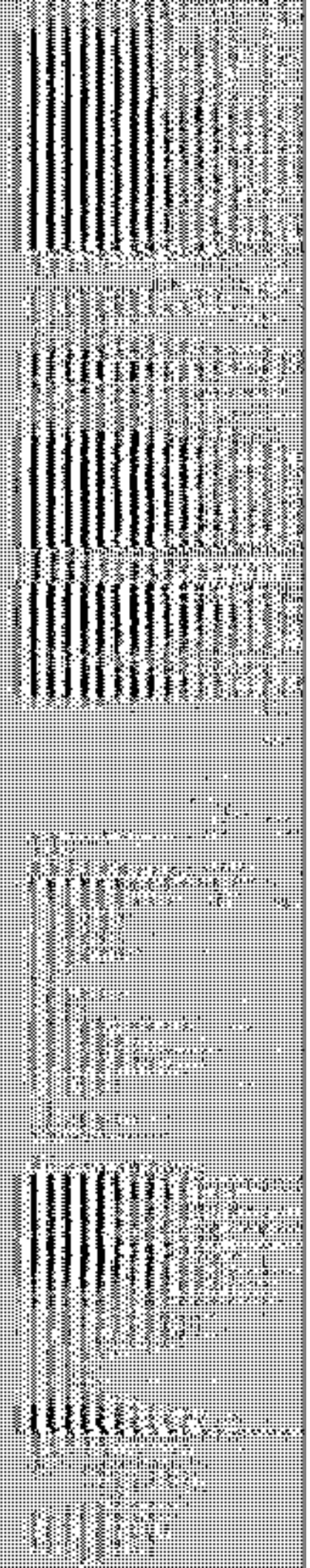
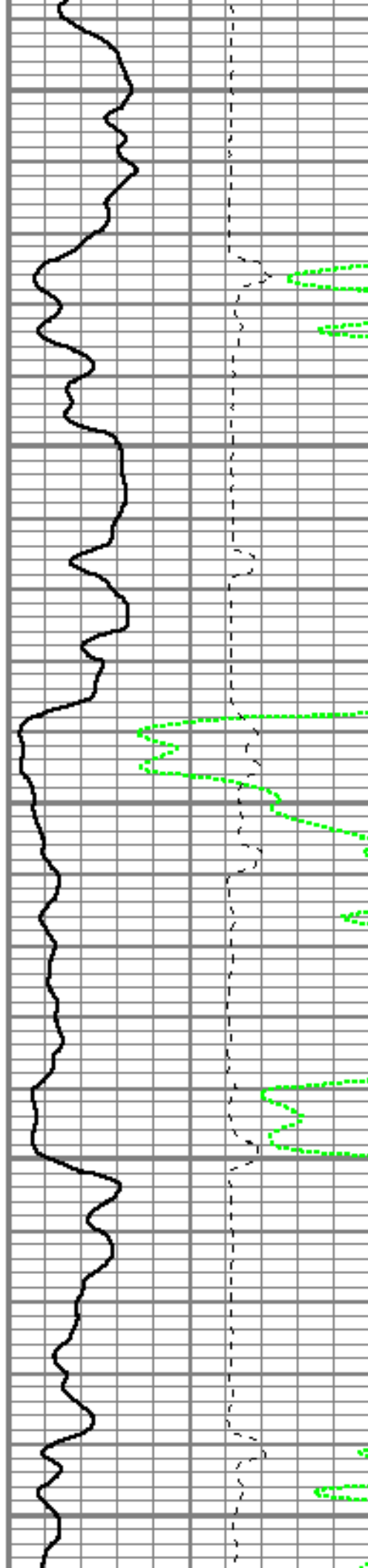
5800

5850

5900

5950

6000



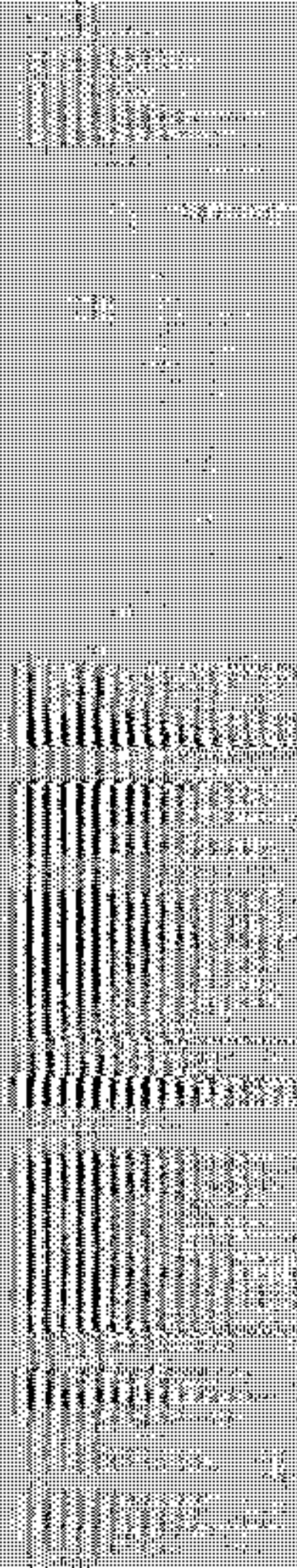
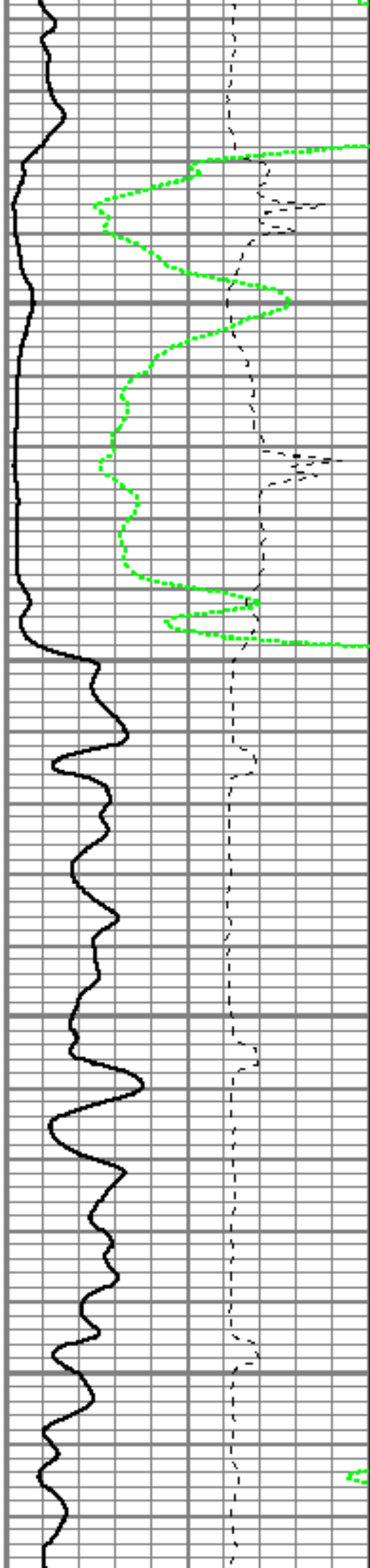


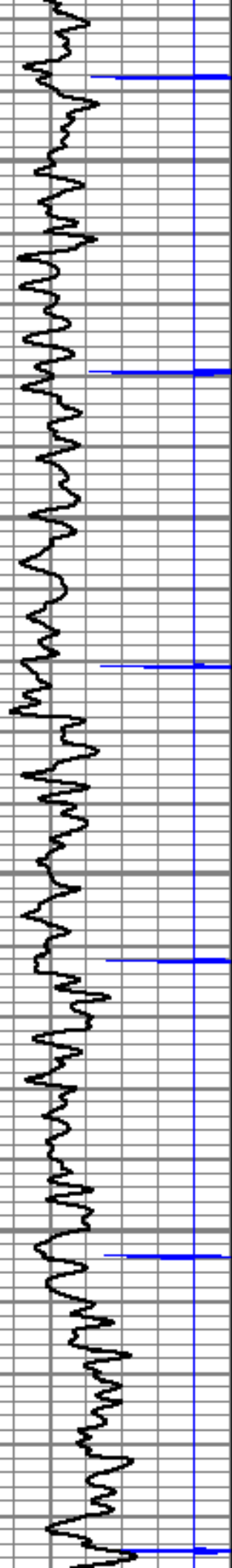
6050

6100

6150

6200



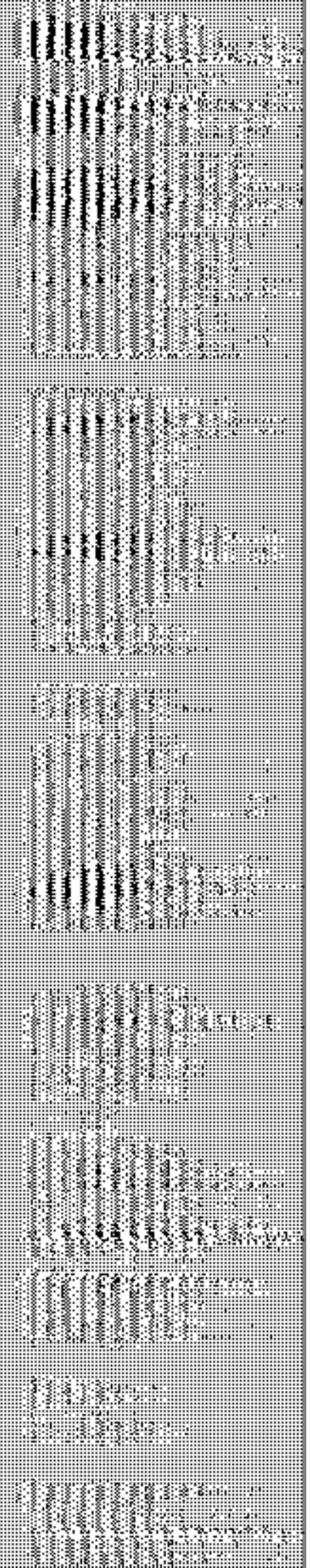
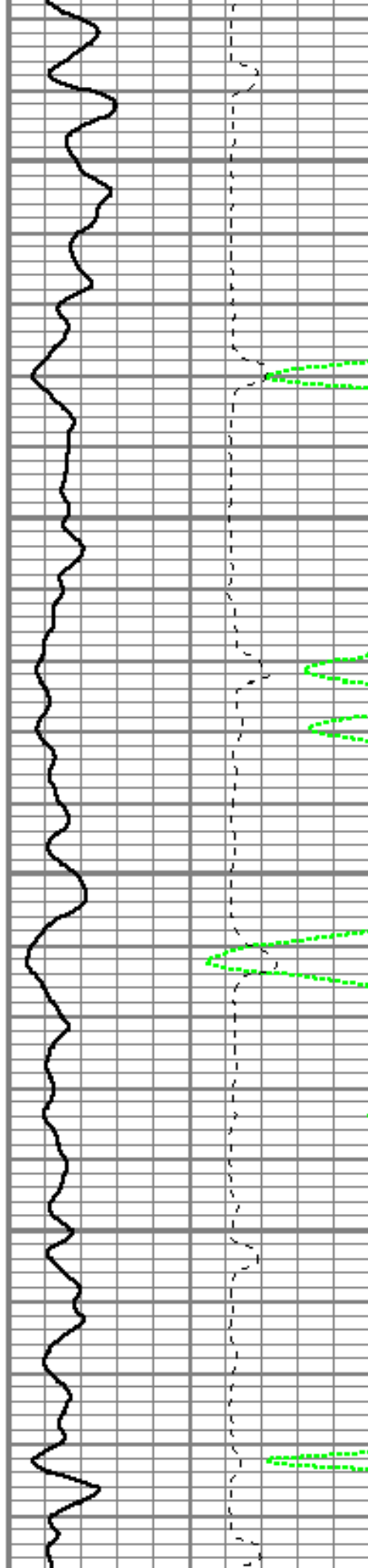


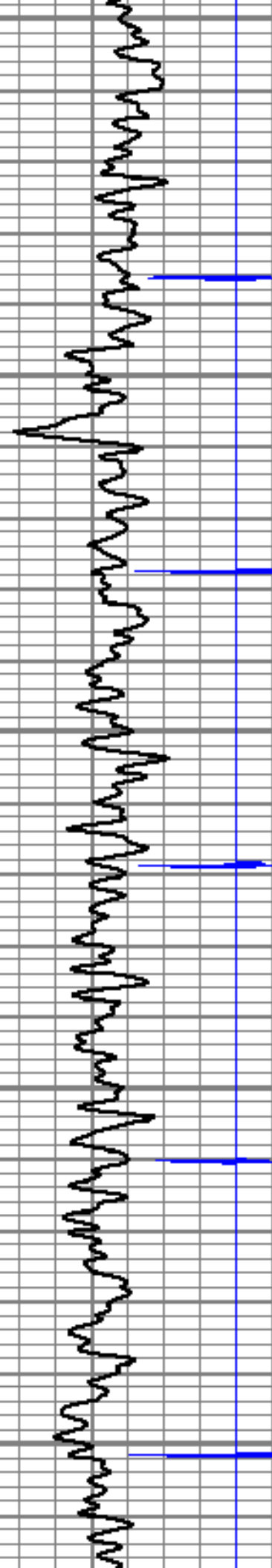
6250

6300

6350

6400





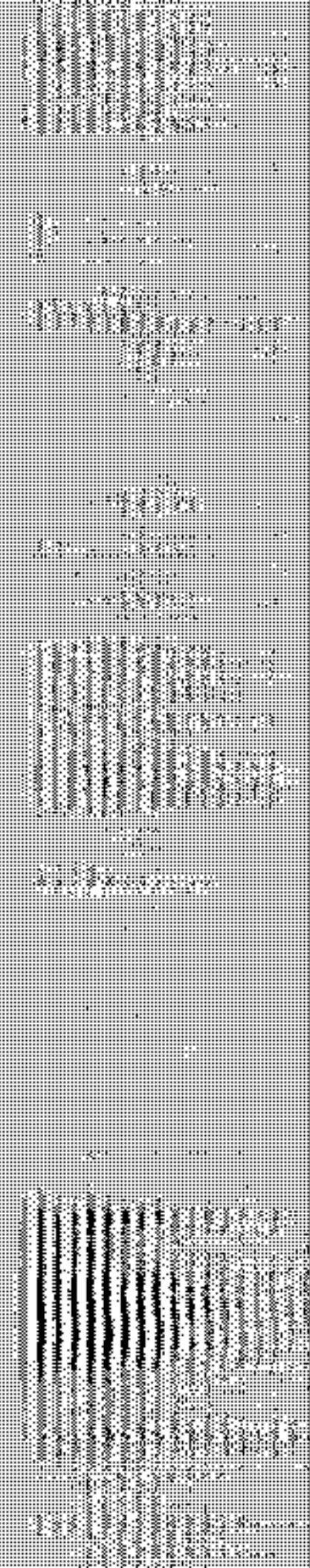
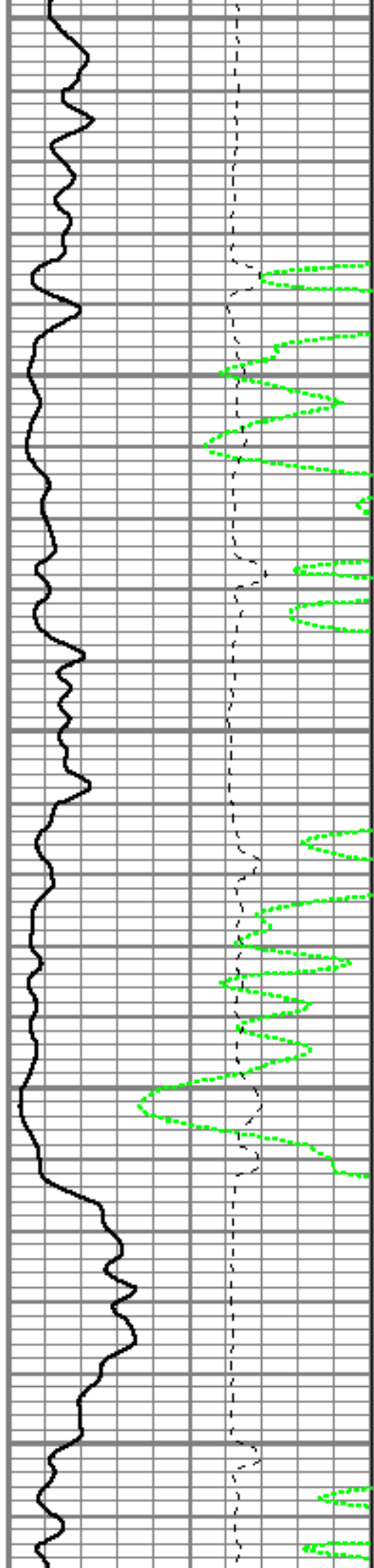
6450

6500

6550

6600

6650



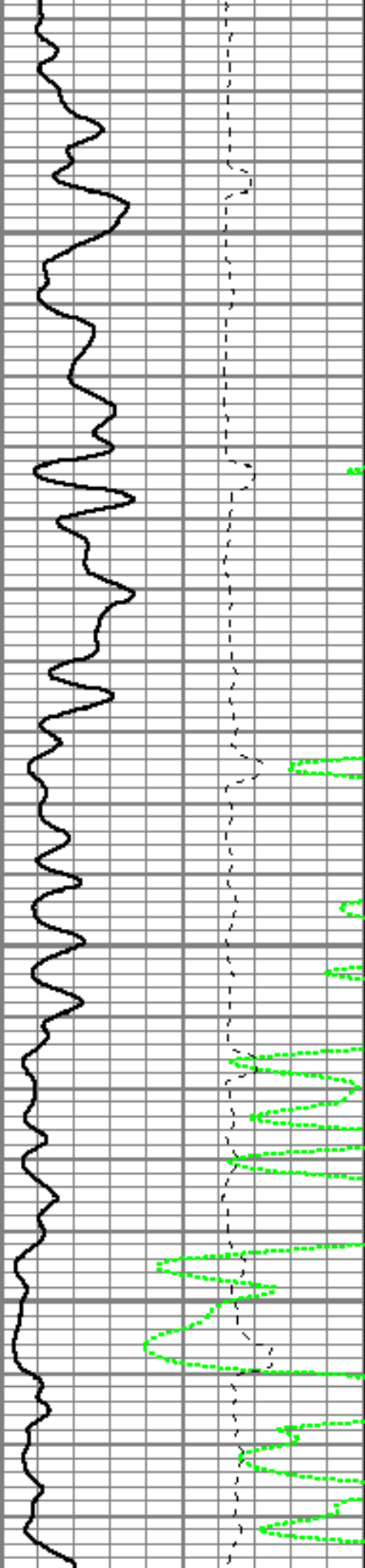


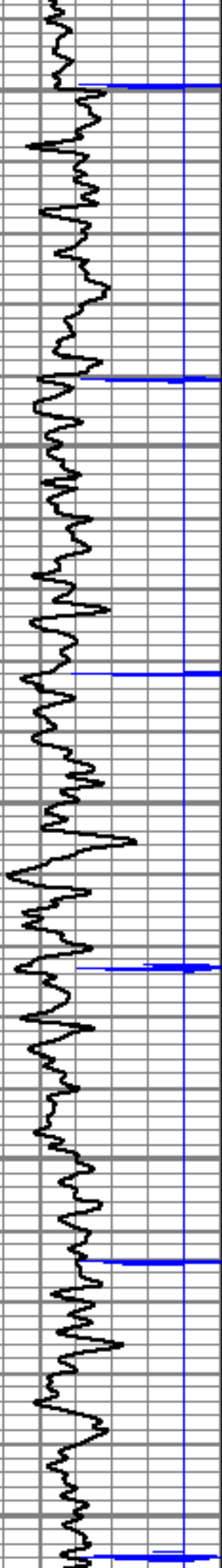
6700

6750

6800

6850





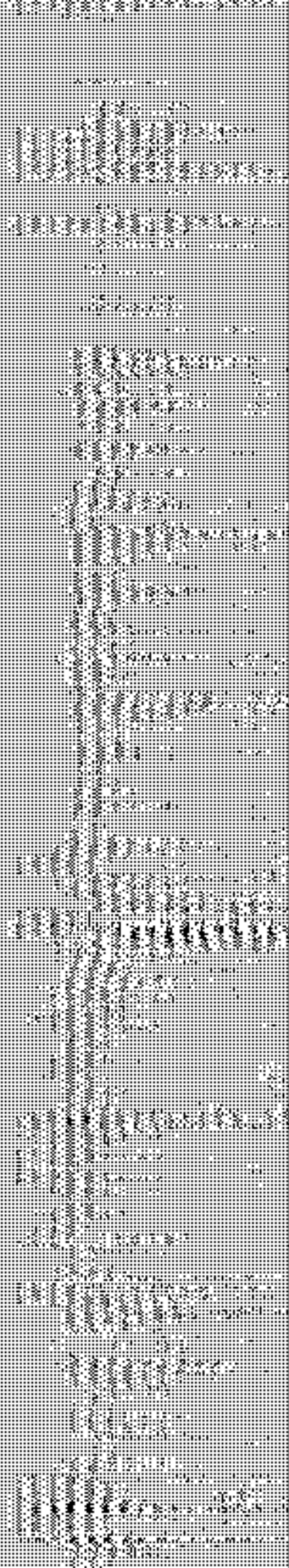
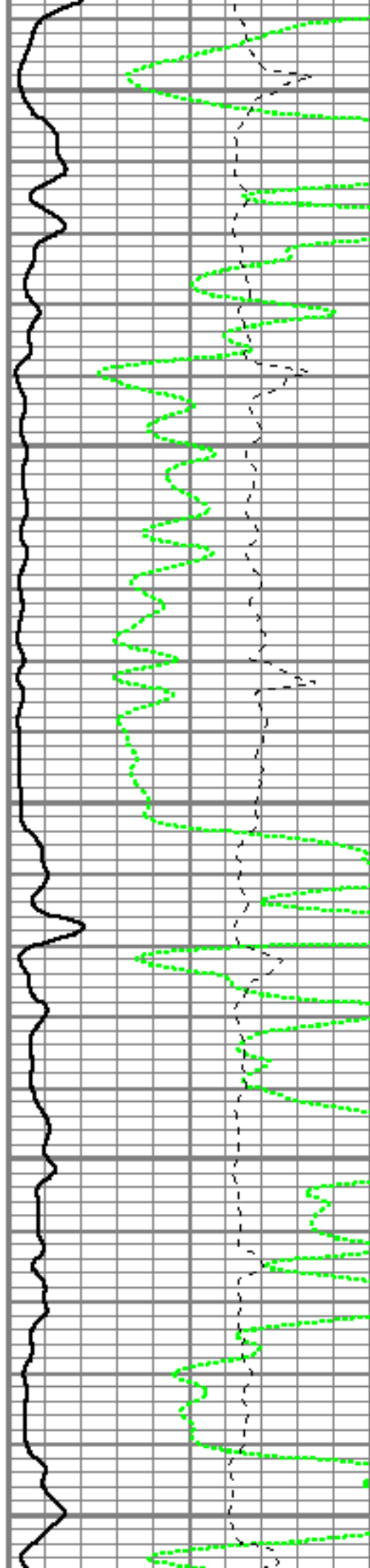
6900

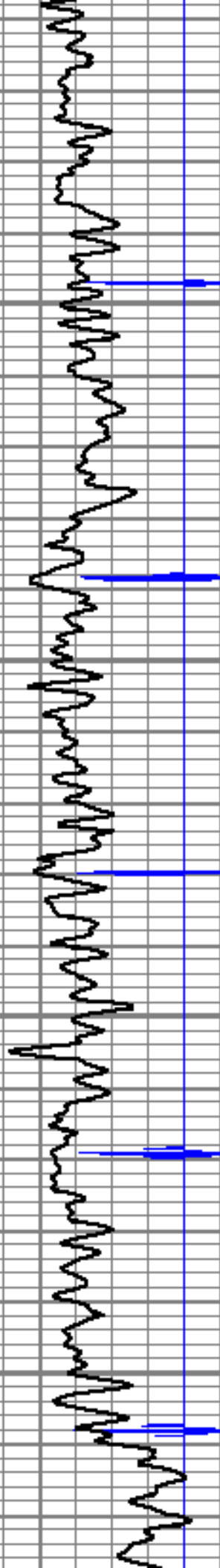
6950

7000

7050

7100



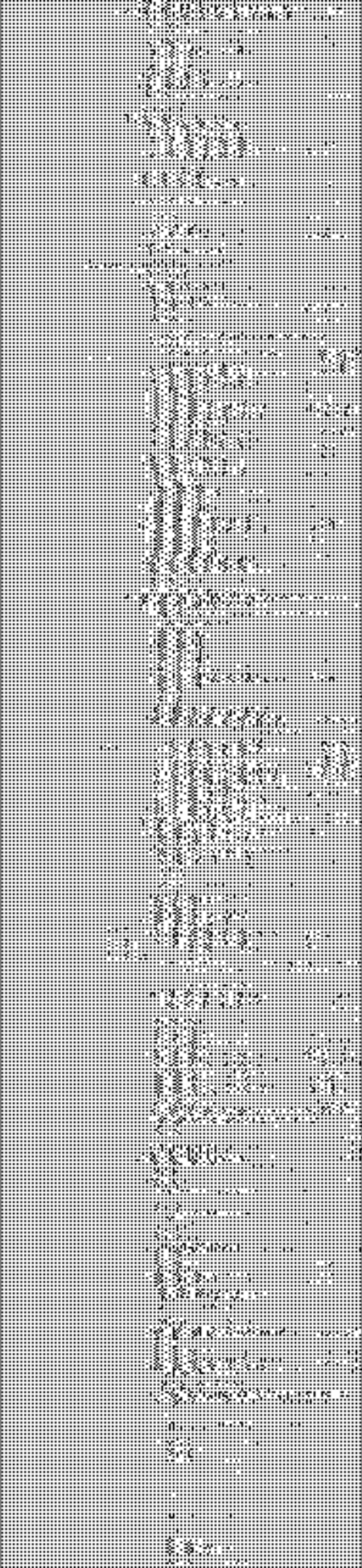
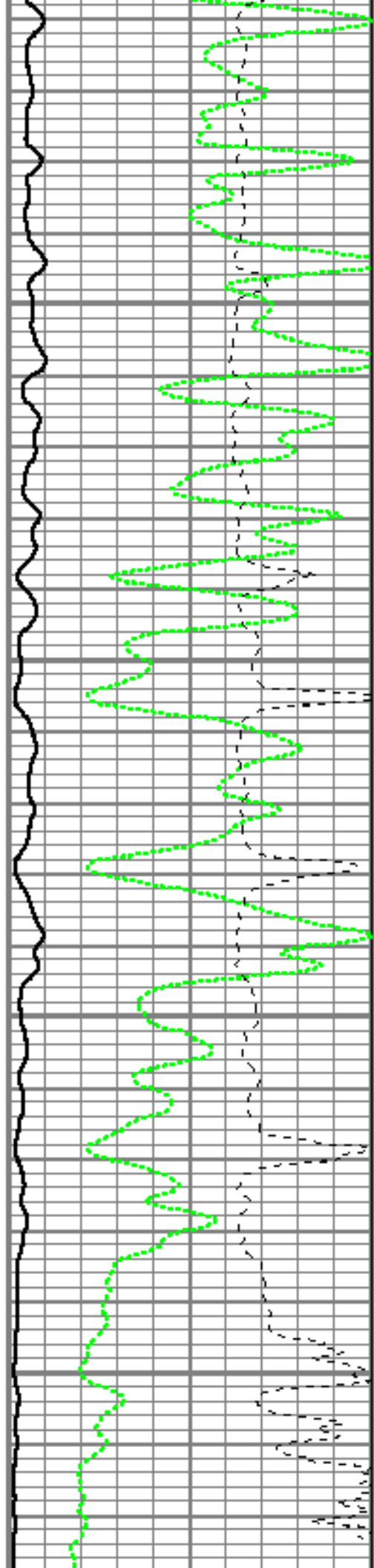


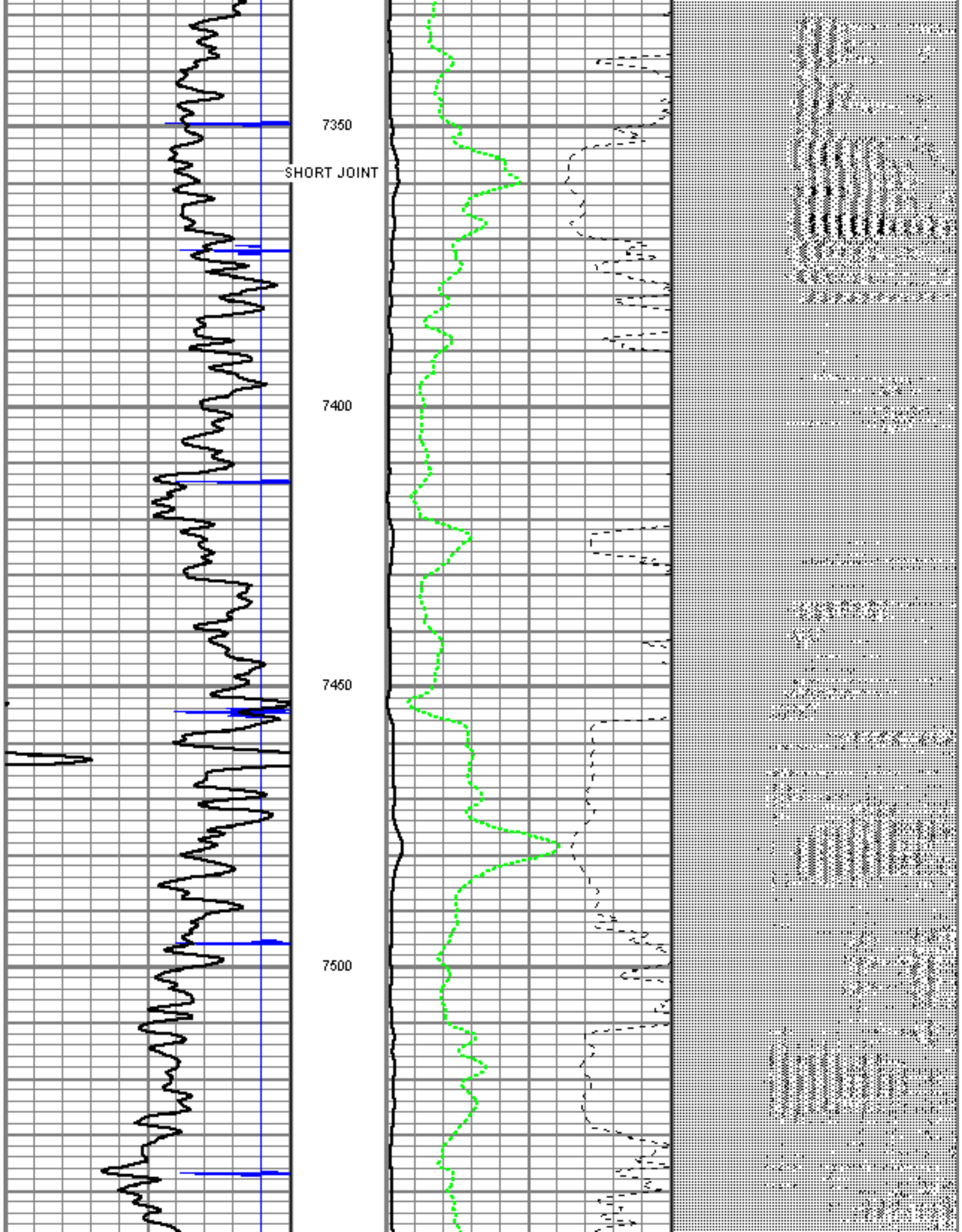
7150

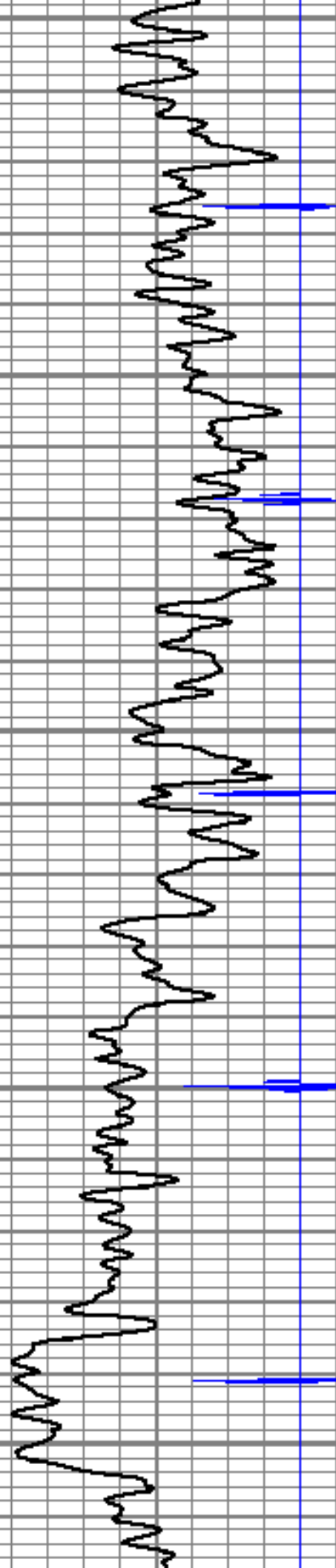
7200

7250

7300







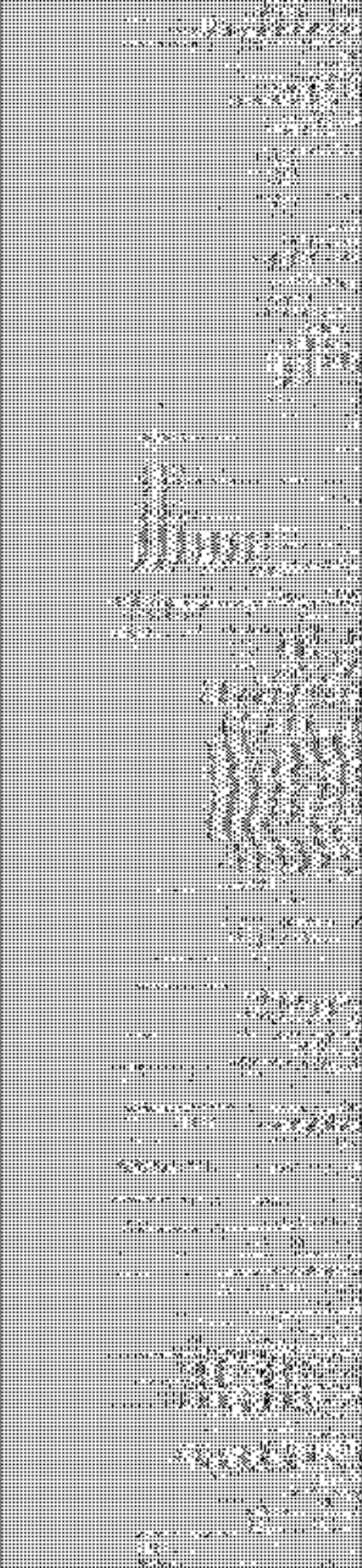
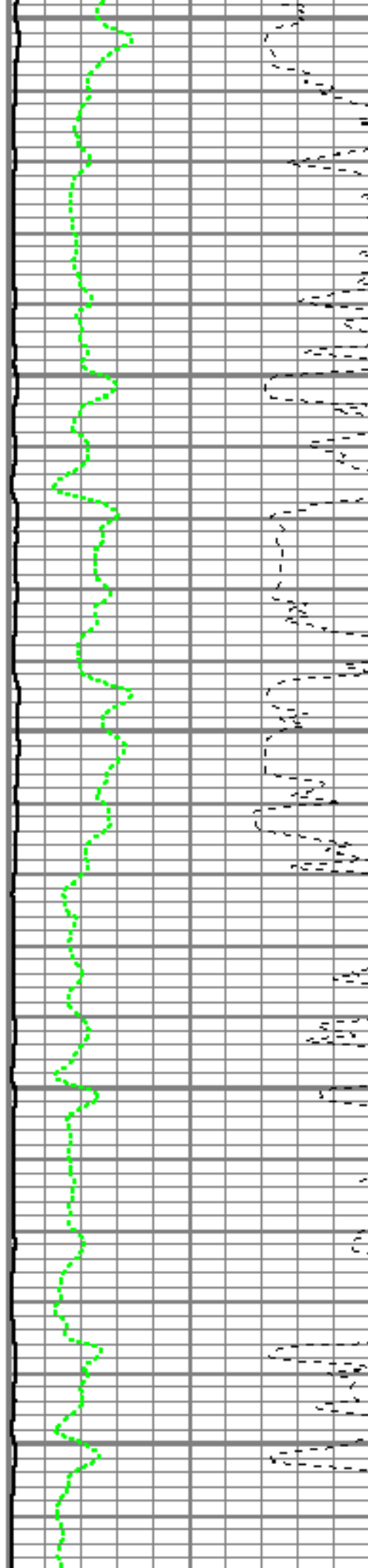
7550

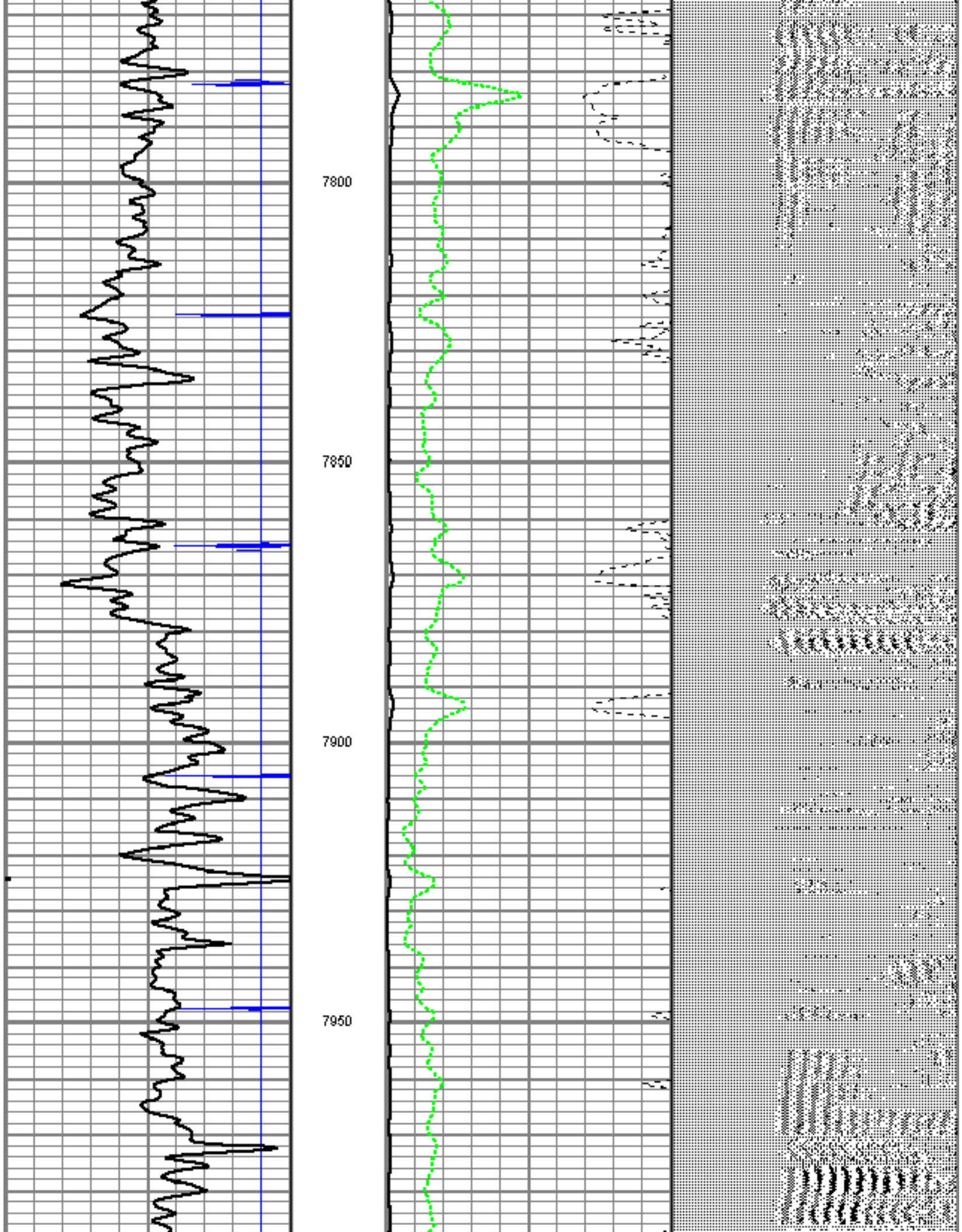
7600

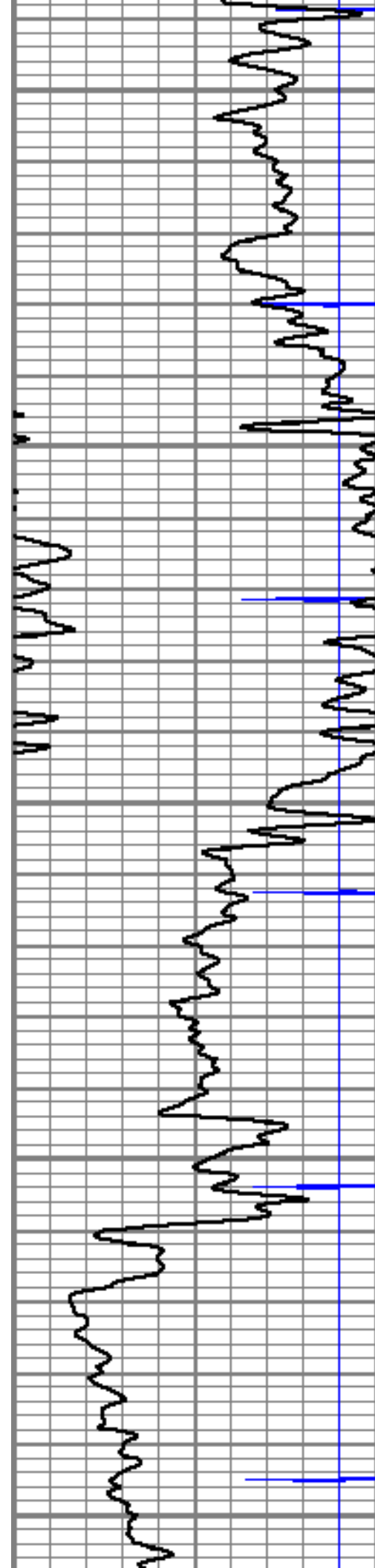
7650

7700

7750







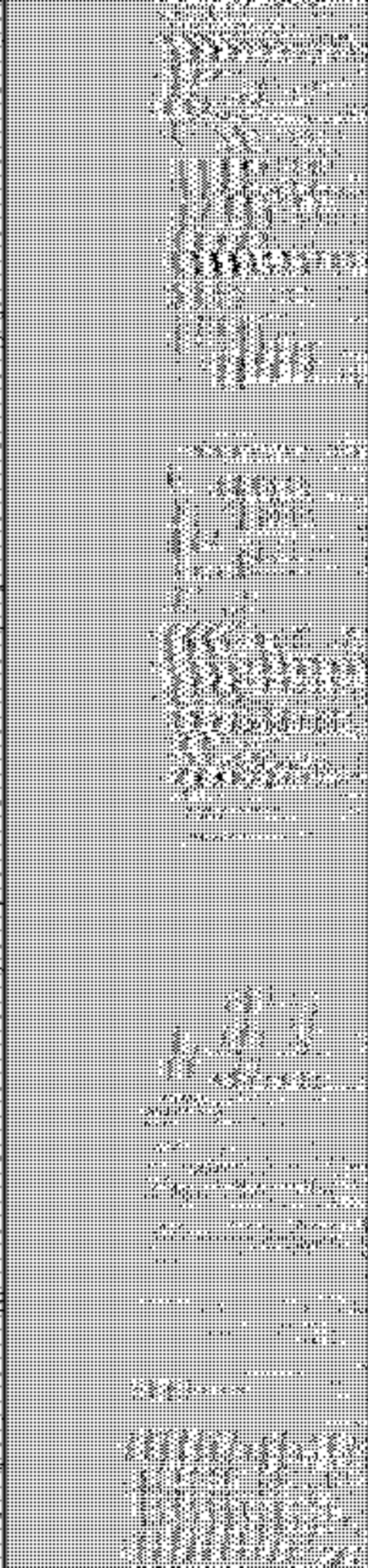
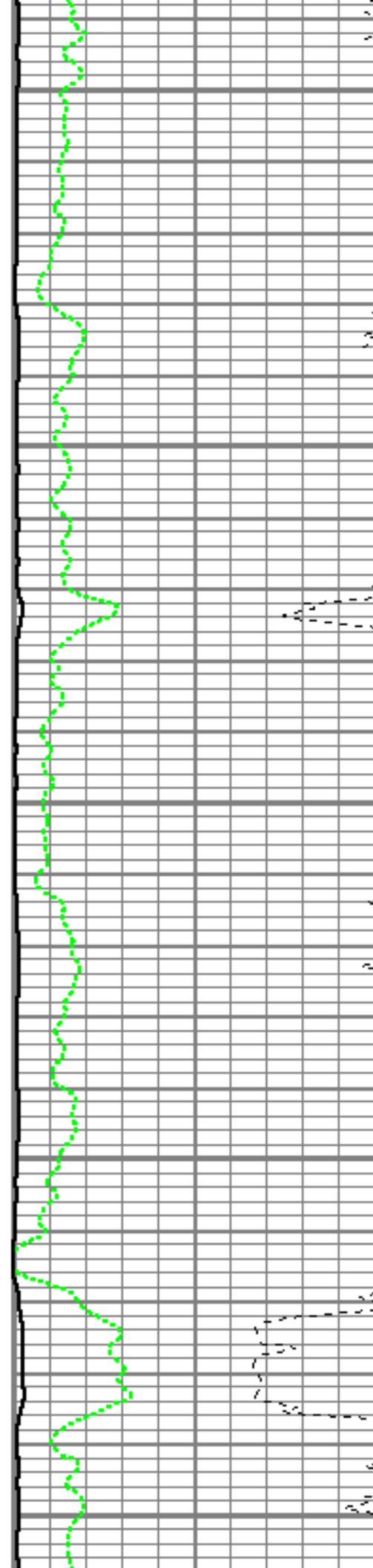
8000

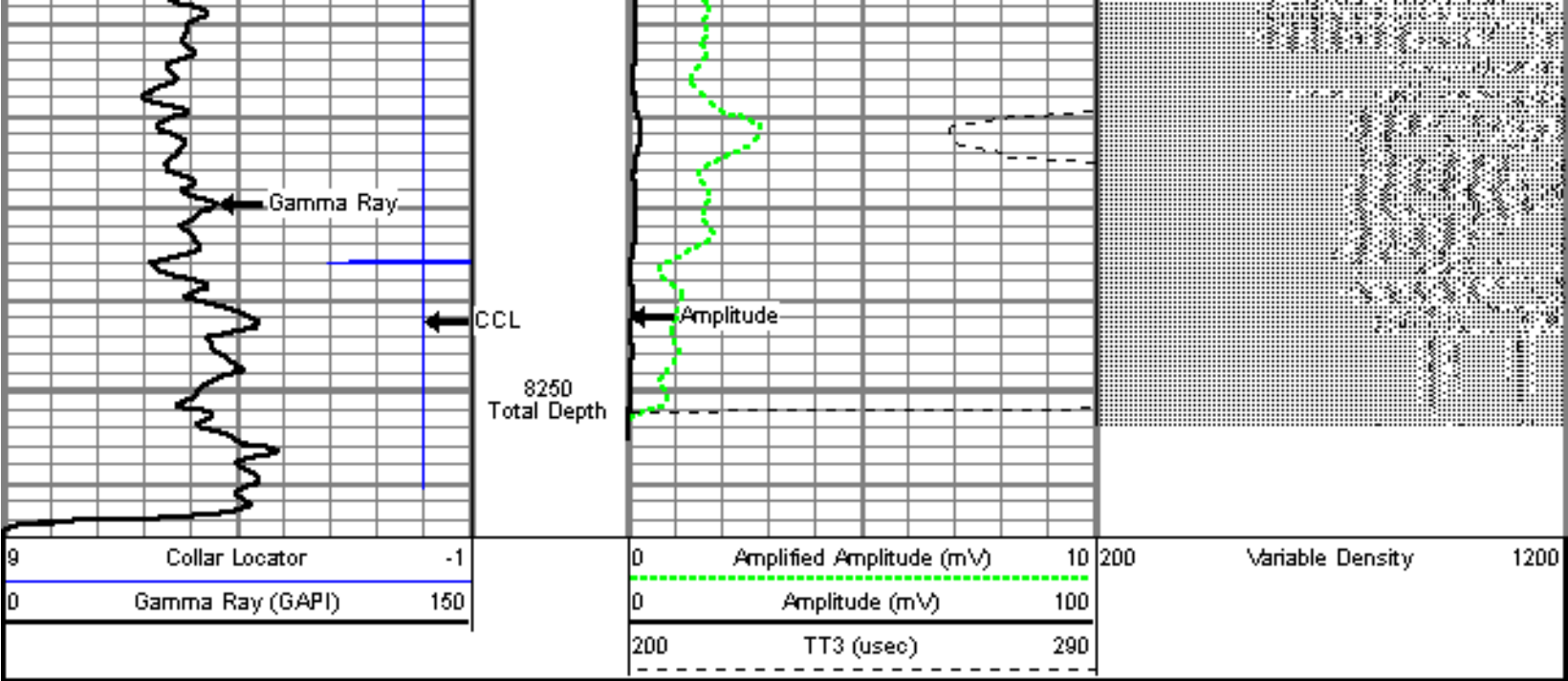
8050

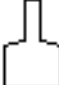



8100

8150


8200





Sensor	Offset (ft)	Schematic	Description	Len (ft)	OD (in)	Wt (lb)
			CHD-STNDRD (1) Standard Cable Head	1.00	1.69	10.00
			2_3/4 Probe	2.83	2.75	20.00
WVF3	13.17		CBL-HurstBond (hb1) HurstBond Tool Joint Recler	8.83	2.75	50.00
WVF5	12.17		2_3/4 Probe	2.83	2.75	20.00

CCL	4.75			CCL-TITAN (TITN) Titan 2 3/4" Collar Locator	1.92	2.75	11.00
GR	1.42			GR-TITAN (TITN) TITAN 2 3/4" GR	4.00	2.75	50.00
Dataset: kenyon_8_6_19.db: field/well/run1/pass4 Total Length: 21.42 ft Total Weight: 161.00 lb O.D. 2.75 in							

	Company	ENCANA OIL & GAS (USA) INC.
	Well	KENYON 8-6-19
	Field	WATTENBERG
	County	WELD
	State	COLORADO