



## CEMENT BOND LOG

Mesa Wireline

Company	ENCANA OIL & GAS (USA) INC.		
Well	EAST RINN 3-6-15		
Field	WATTENBURG		
County	WELD		
State	COLORADO		
Company ENCANA OIL & GAS (USA) INC.		Location: API #: 05123325020000	
Well EAST RINN 3-6-15		SHL: NESW15-2N-68W6M	
Field WATTENBURG		BHL: SWSW15-2N-68W6M	
County WELD		SEC. 15 TWP. 02N RGE. 68W	
State COLORADO		Permanent Datum GROUND LEVEL Elevation 4874'	
		Log Measured From KELLY BUSHING = 13 FT	
		Drilling Measured From KELLY BUSHING	
		Other Services	
		NONE	
		Elevation	
		K.B. 4887'	
		D.F. 4886'	
		G.L. 4874'	

Date	15 MAR 2011						
Run Number	ONE						
Depth Driller	8195'						
Depth Logger	8155'						
Bottom Logged Interval	8153'						
Top Log Interval	3600' & 6800'						
Open Hole Size	7.875"						
Type Fluid	WATER						
Density / Viscosity	~8.34#						
Max. Recorded Temp.	N/A						
Estimated Cement Top	3810' & 6900'						
Time Well Ready	N/A						
Time Logger on Bottom	N/A						
Equipment Number	WMO61/RBT04						
Location	AULT, CO						
Recorded By	D. SOLIS						
Witnessed By	G. CUMMINGS						
Borehole Record			Tubing Record				
Run Number	Bit	From	To	Size	Weight	From	To
ONE	12.25"	SURFACE	850'				
TWO	7.875"	850'					
Casing Record	Size	Wgt/Ft	Top	Bottom			
Surface String	8.625"	24.0#	SURFACE	850'			
Prot. String							
Production String	4.5"	11.6#	SURFACE	8180'			
Liner							

<<< Fold Here >>>

All interpretations are opinions based on inferences from electrical or other measurements and we cannot and do not guarantee the accuracy or correctness of any interpretation, and we shall not, except in the case of gross or willful negligence on our part, be liable or responsible for any loss, costs, damages, or expenses incurred or sustained by anyone resulting from any interpretation made by any of our officers, agents or employees. These interpretations are also subject to our general terms and conditions set out in our current Price Schedule.

### Comments

RBT-GR RAN IN COMBINATION.  
NO LOGS AVAILABLE TO CORRELATE WITH.  
LOG INTERVALS PER CUSTOMER REQUEST.  
SHORT JOINT @: 7267' TO 7289'.  
DV TOOL @: 5277'.

WE APPRECIATE YOUR BUSINESS, MESA WIRELINE LLC, AULT, CO. (970) 834-2495



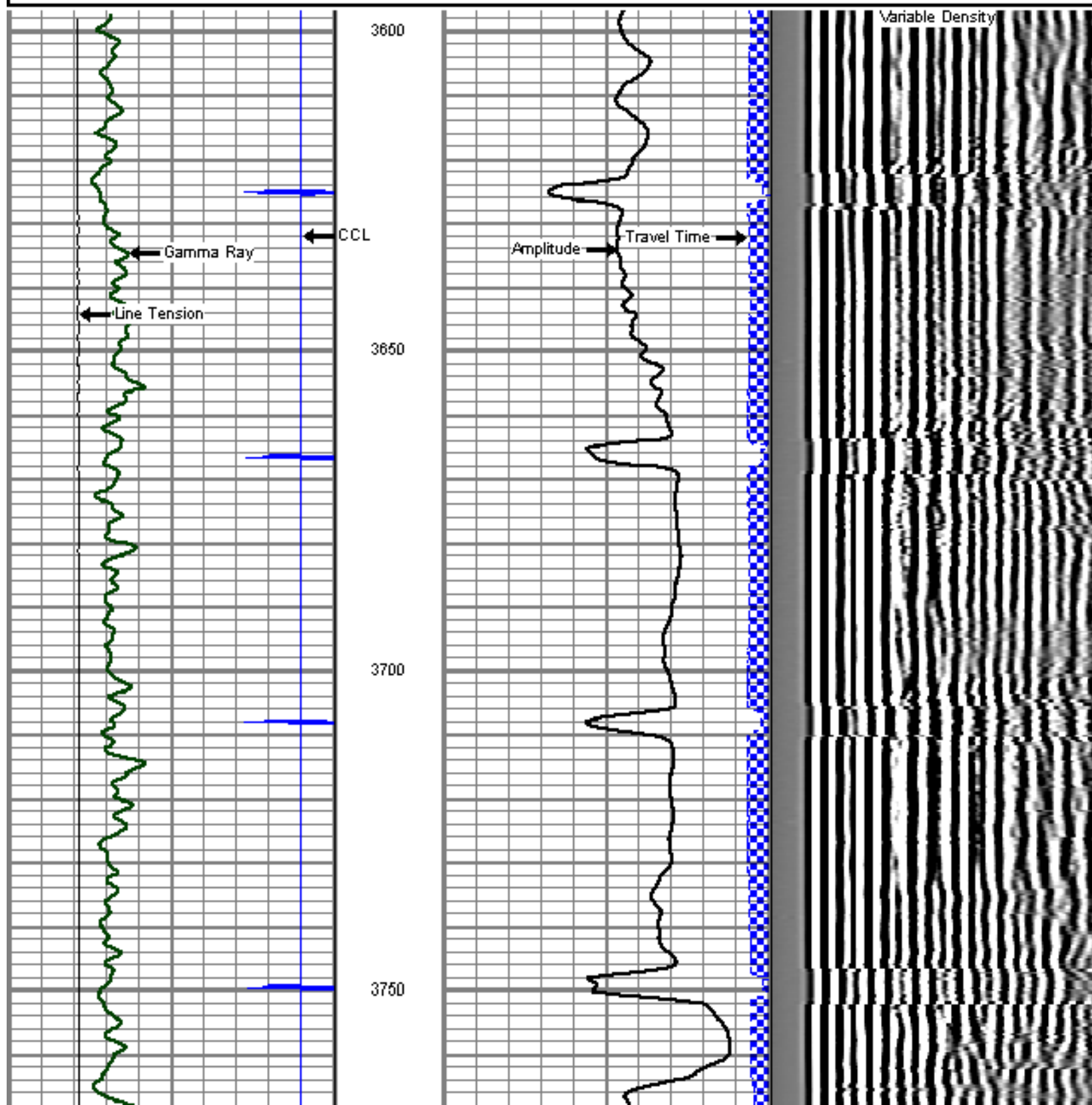
MAIN LOG SECTION

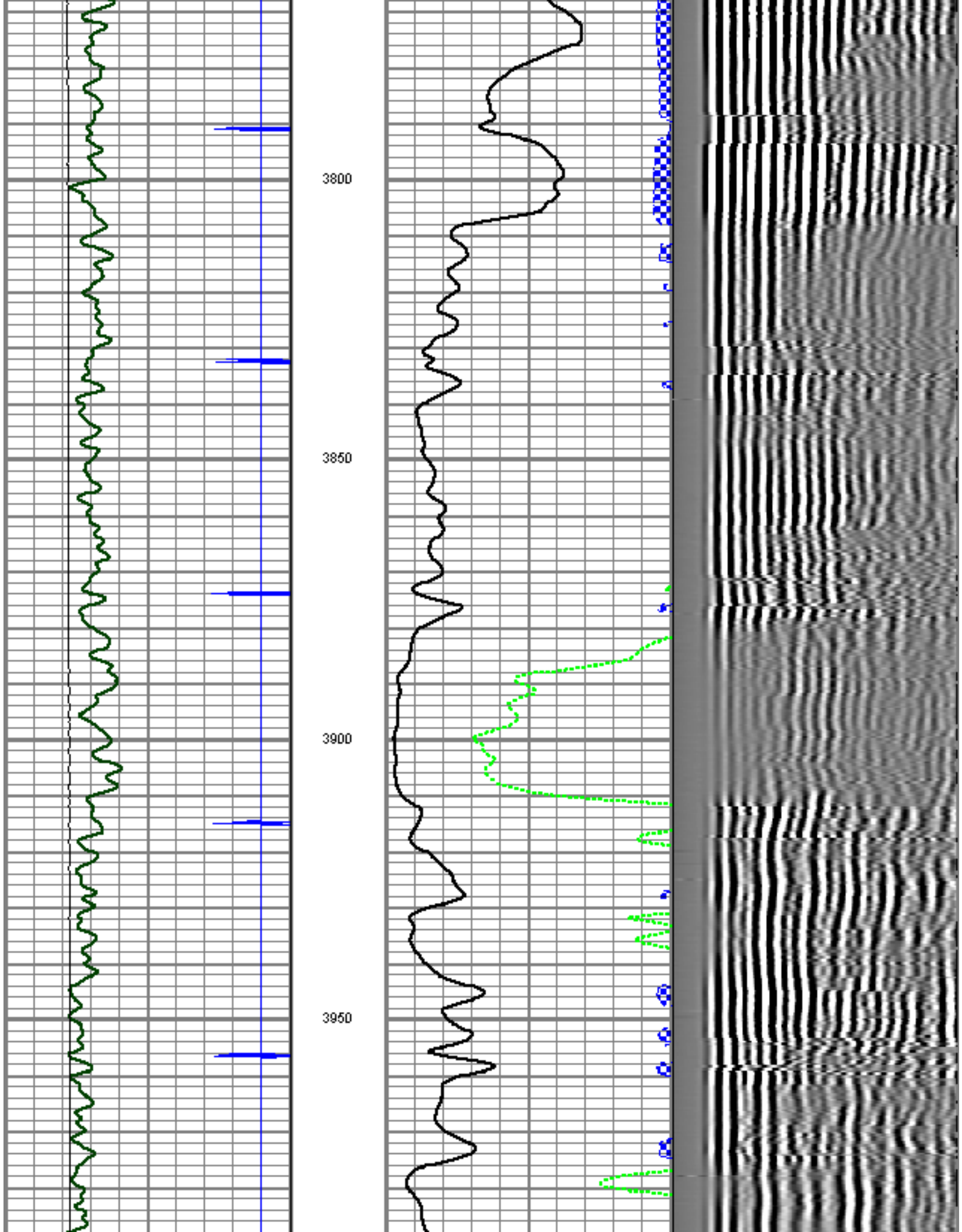
UPPER SECTION

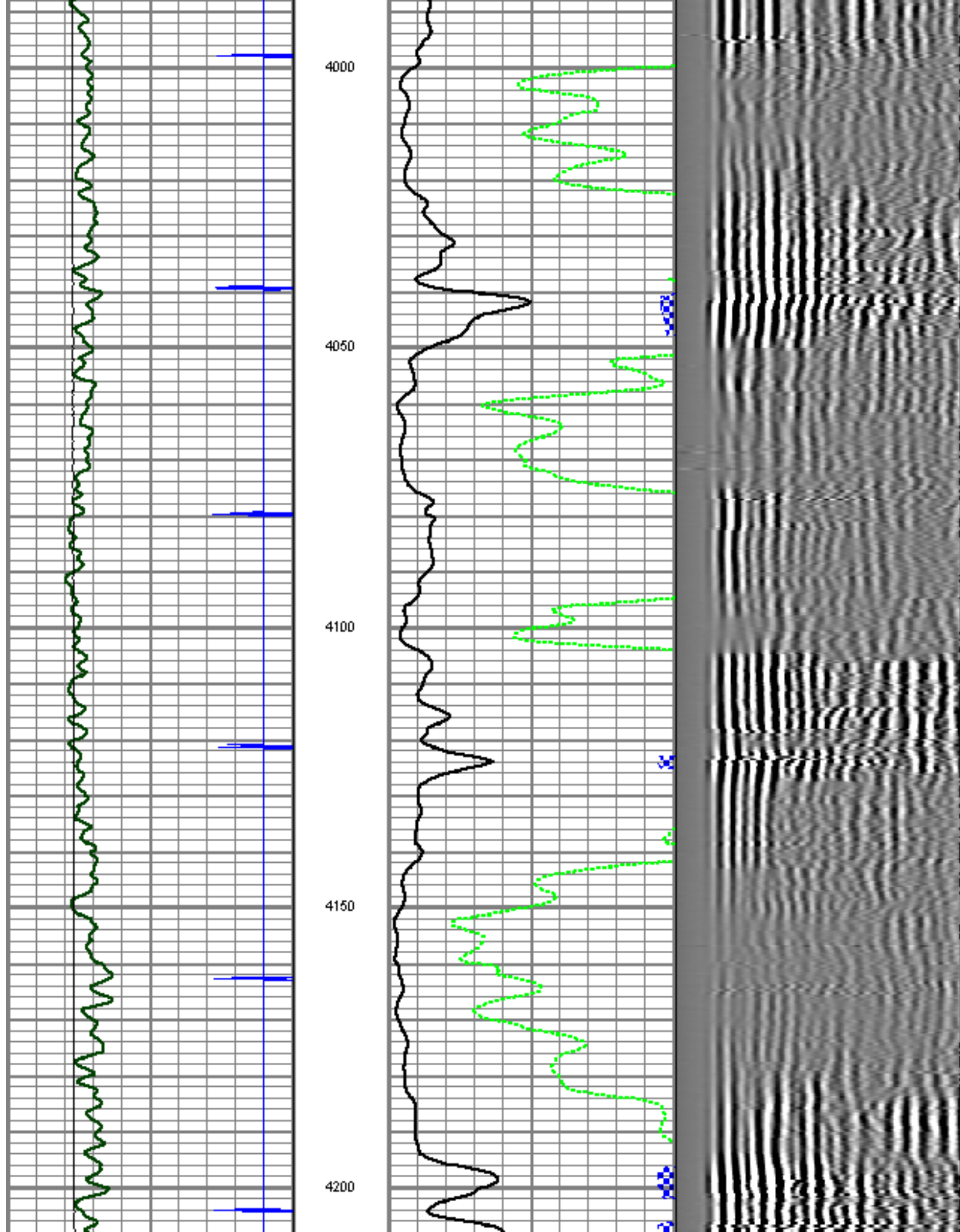
Database File: east rinn 3.db  
Dataset Pathname: pass7  
Presentation Format: cbl01son  
Dataset Creation: Tue Mar 15 15:32:58 2011 by Log SCH 110223  
Charted by: Depth in Feet scaled 1:240

9	Collar Locator	-1
0	Gamma Ray (GAPI)	300
0	LTEN (lb)	4000

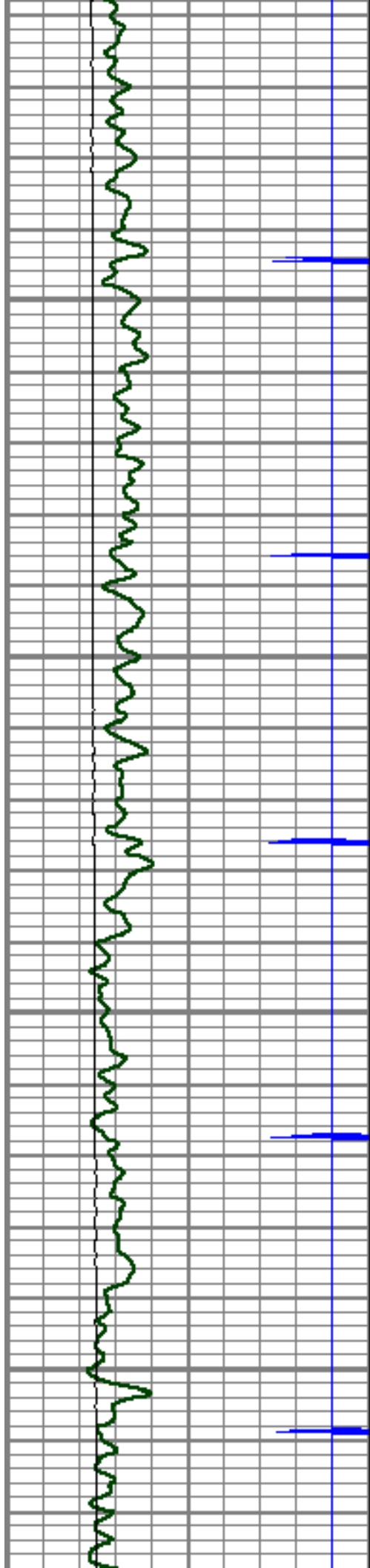
0	Amplified Amplitude (mV)	10	200	Variable Density	1200
0	Amplitude (mV)	100			
0	Travel Time (usec)	200			









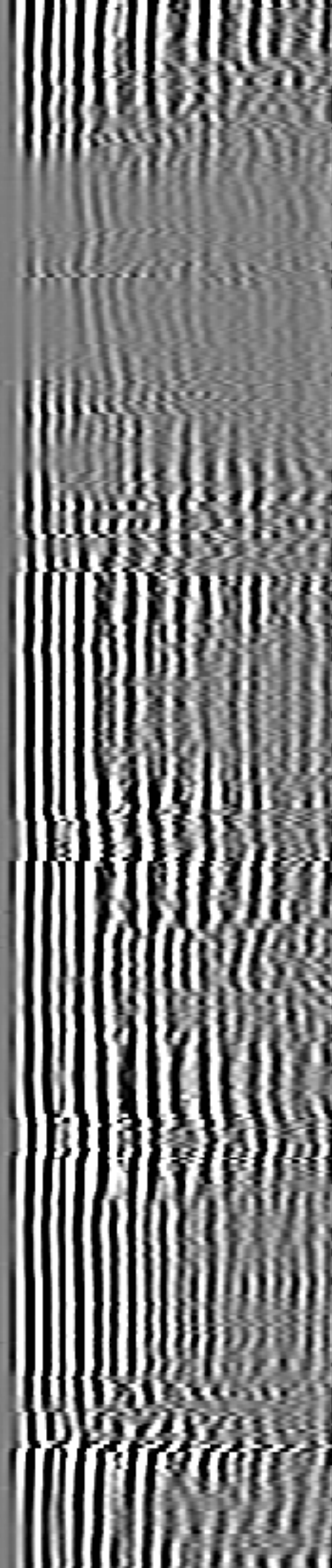
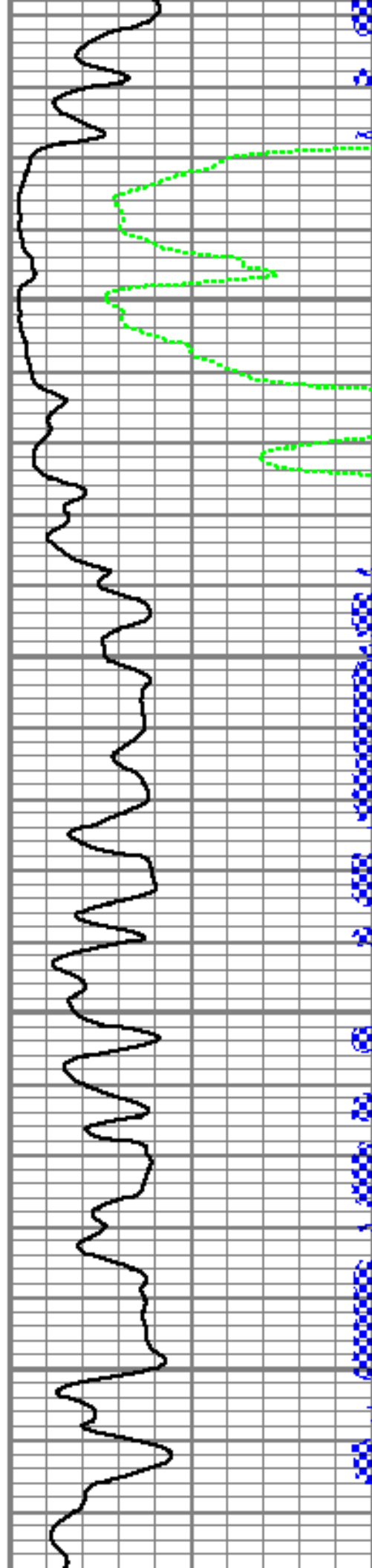


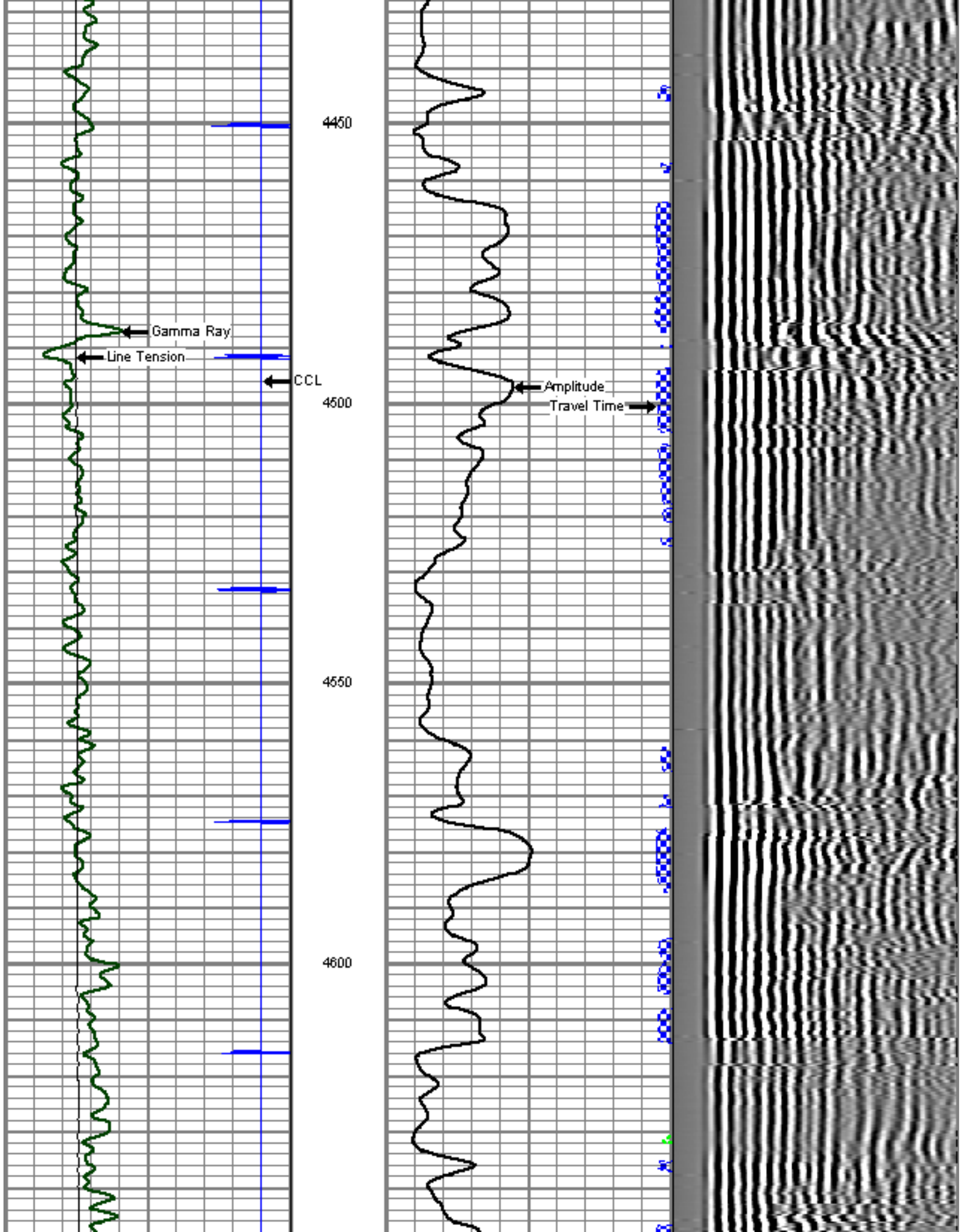
4250

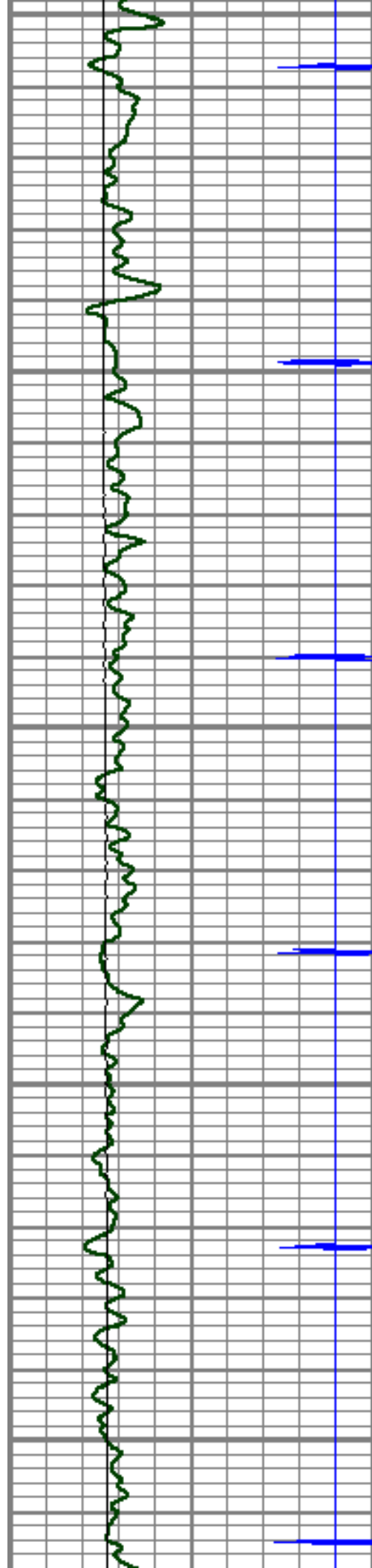
4300

4350

4400







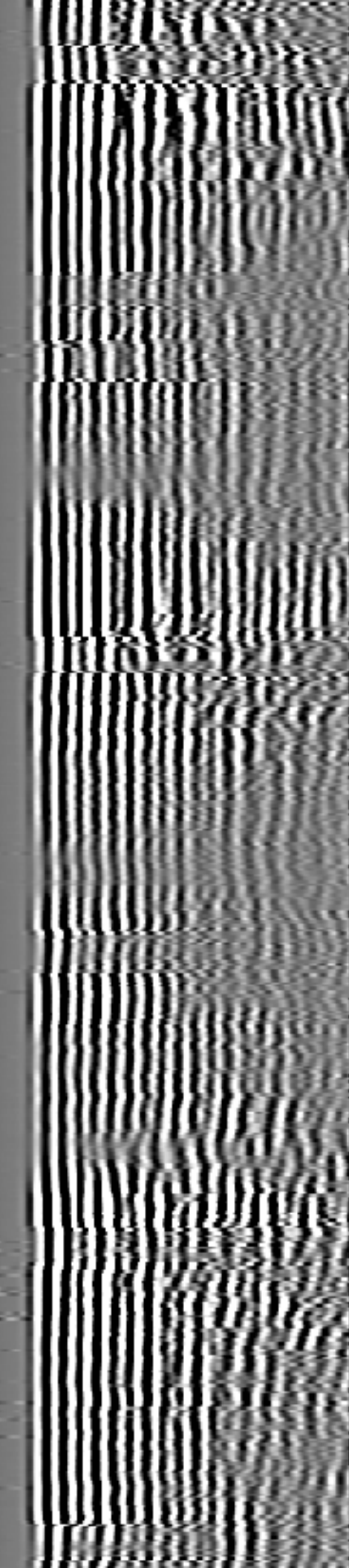
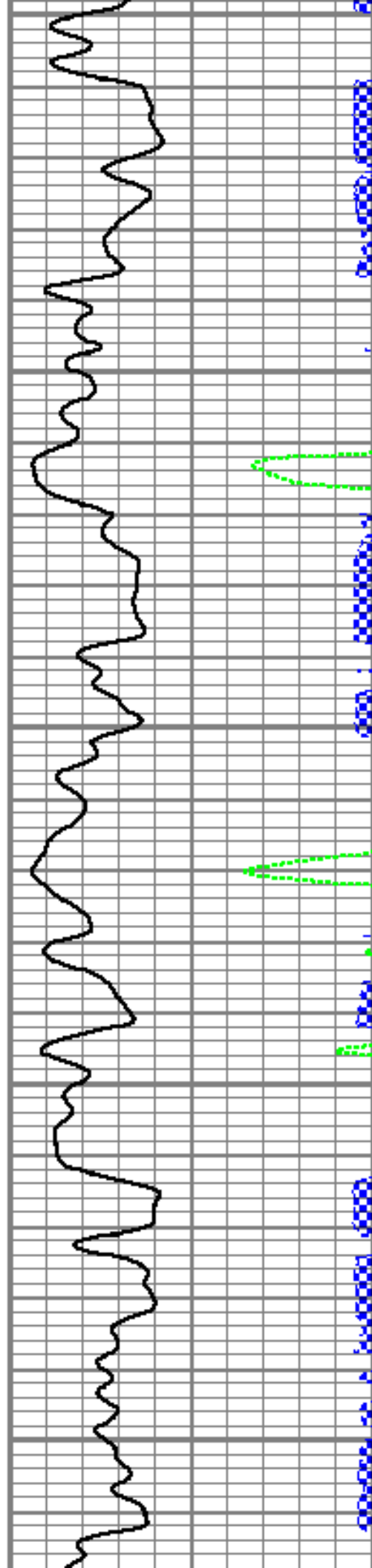
4650

4700

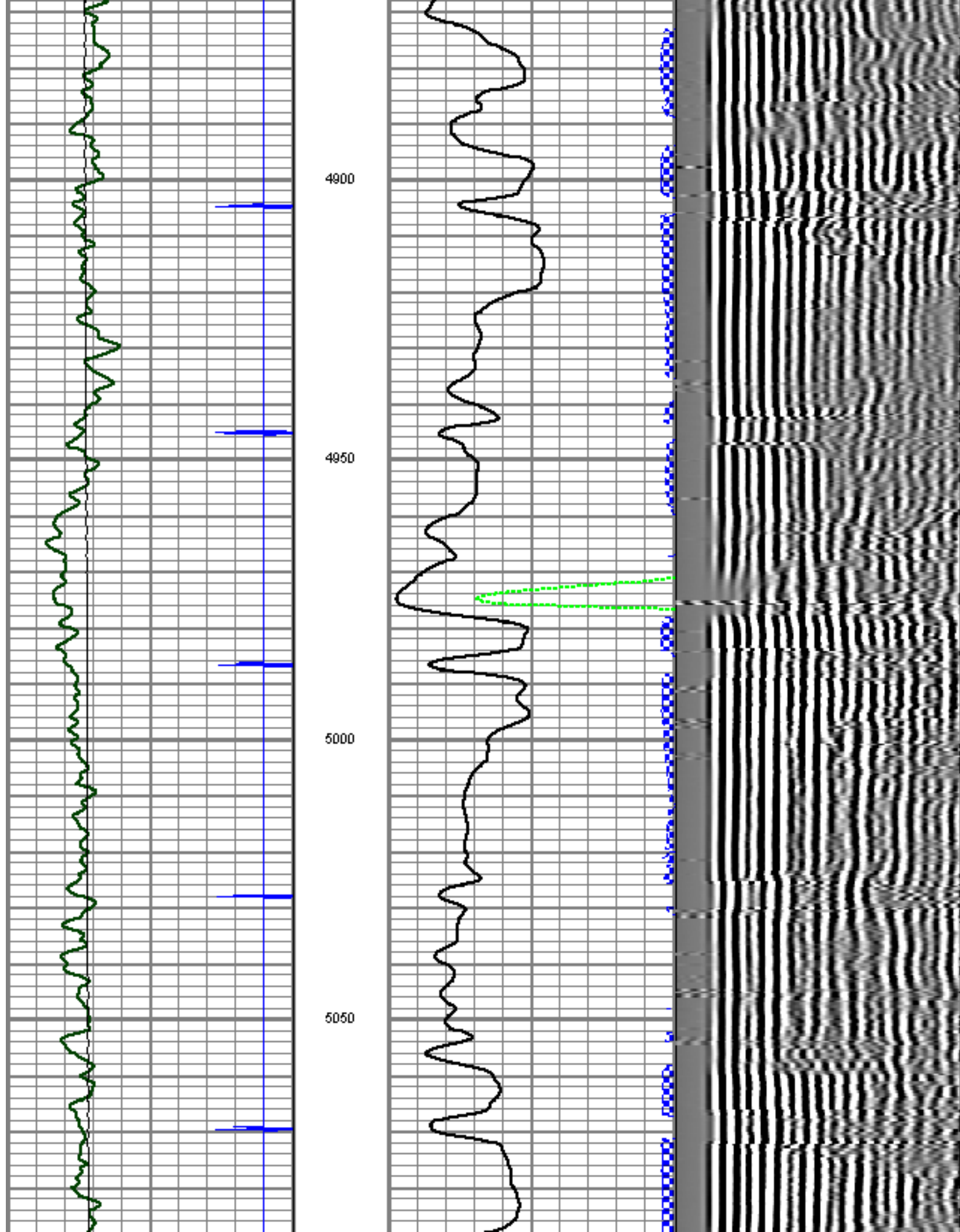
4750

4800

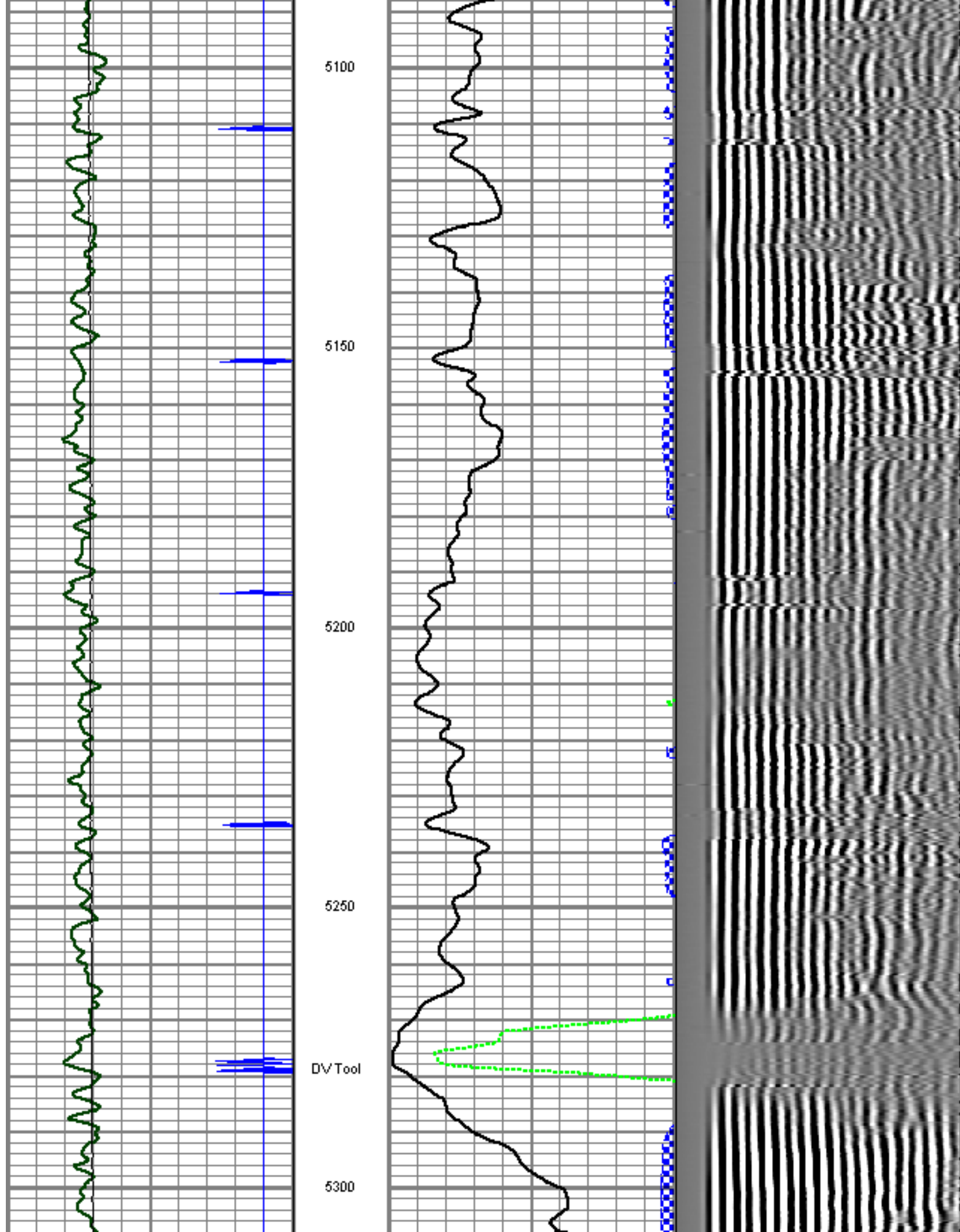
4850

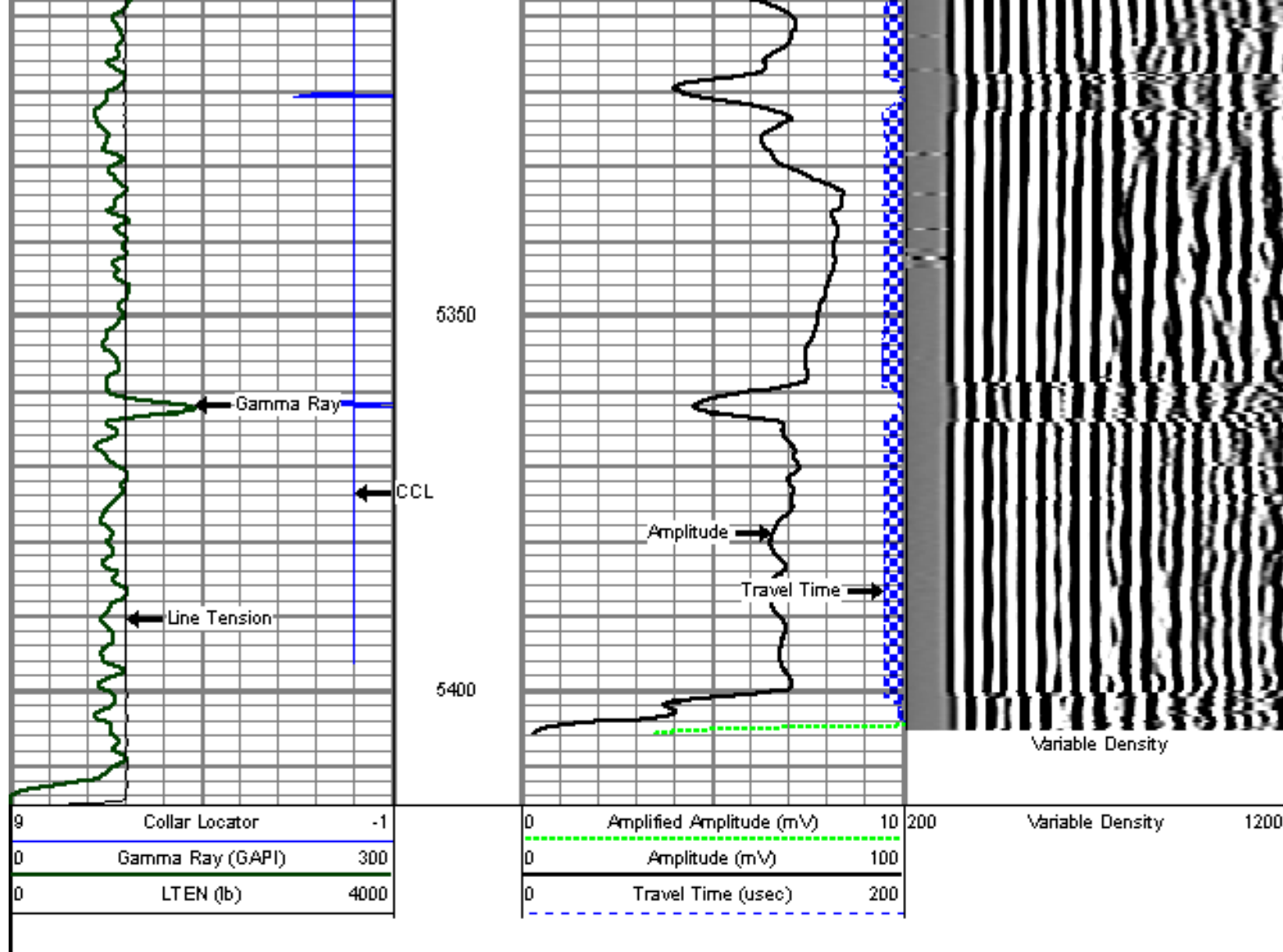










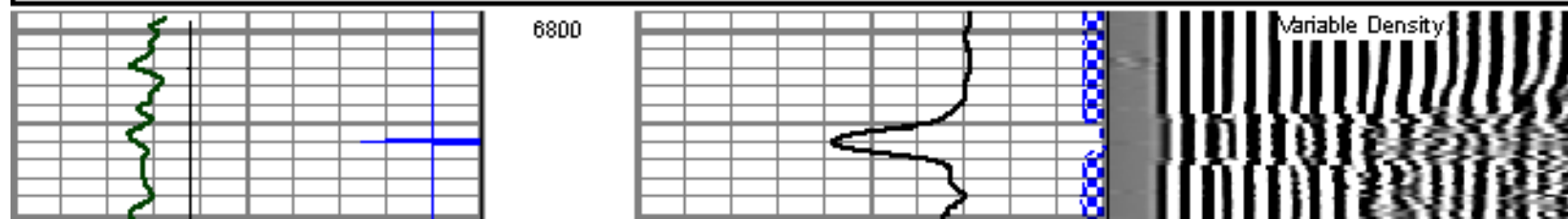
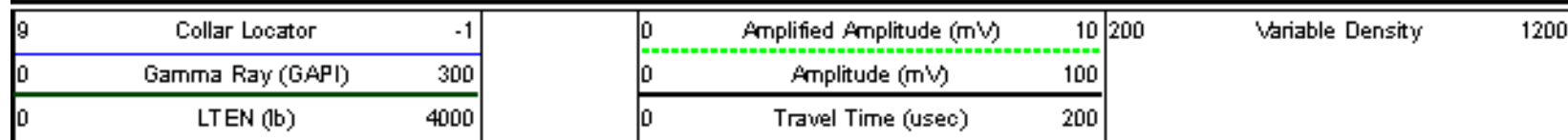


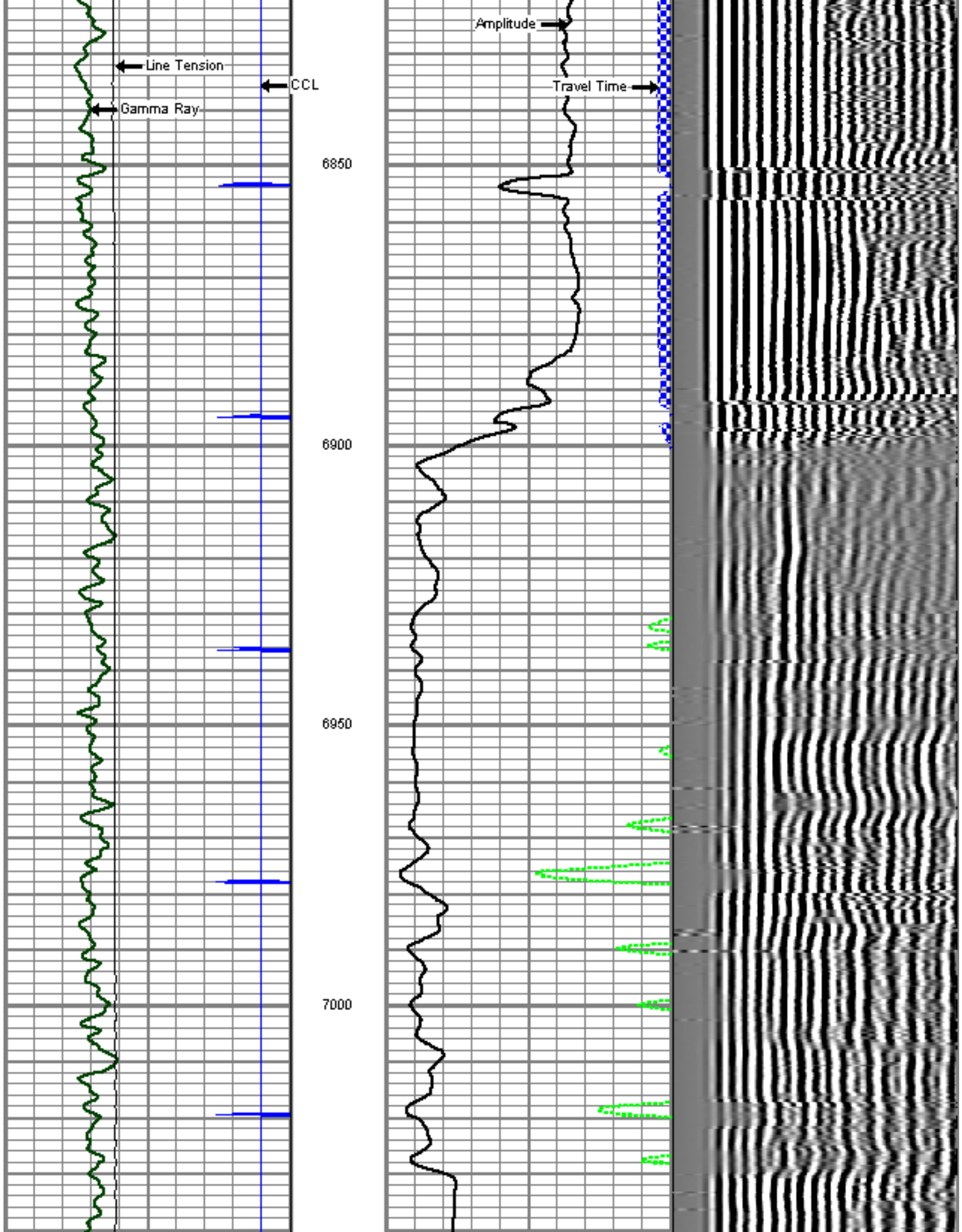
## MAIN LOG SECTION

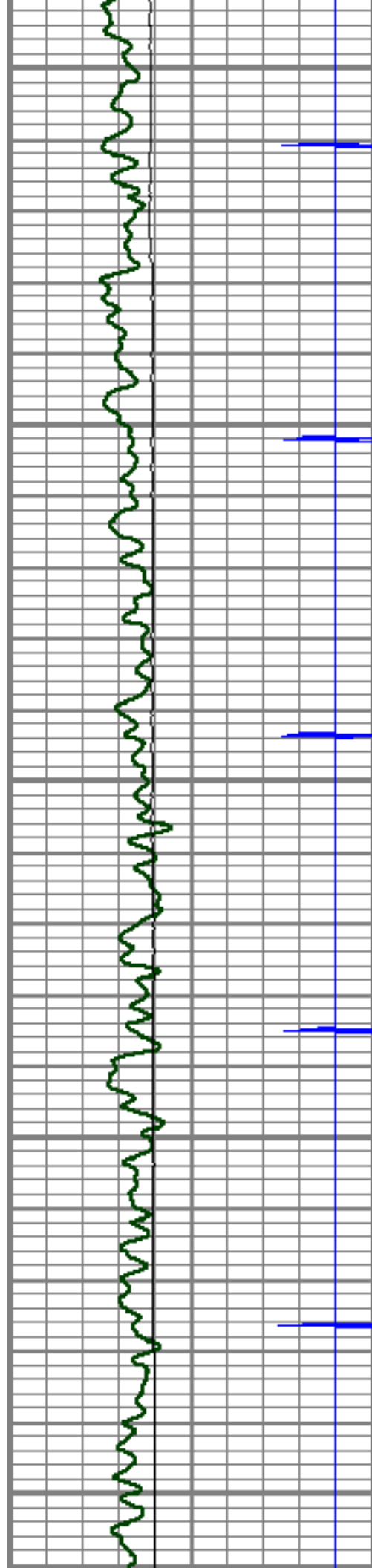
LOWER SECTION

5" = 100'

Database File: east rinn 3.db  
 Dataset Pathname: pass6  
 Presentation Format: cbld1son  
 Dataset Creation: Tue Mar 15 15:04:24 2011 by Log SCH 110223  
 Charted by: Depth in Feet scaled 1:240







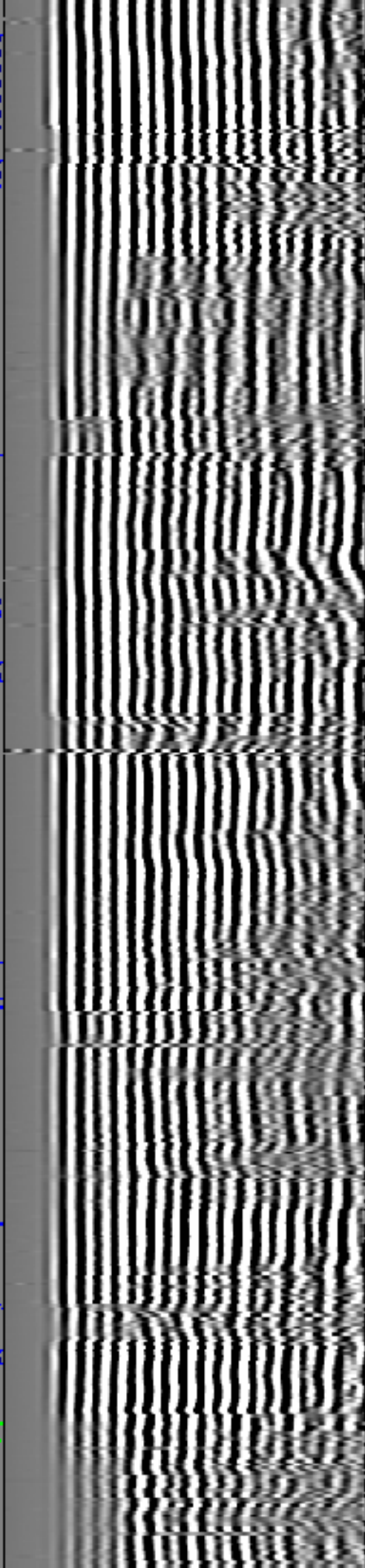
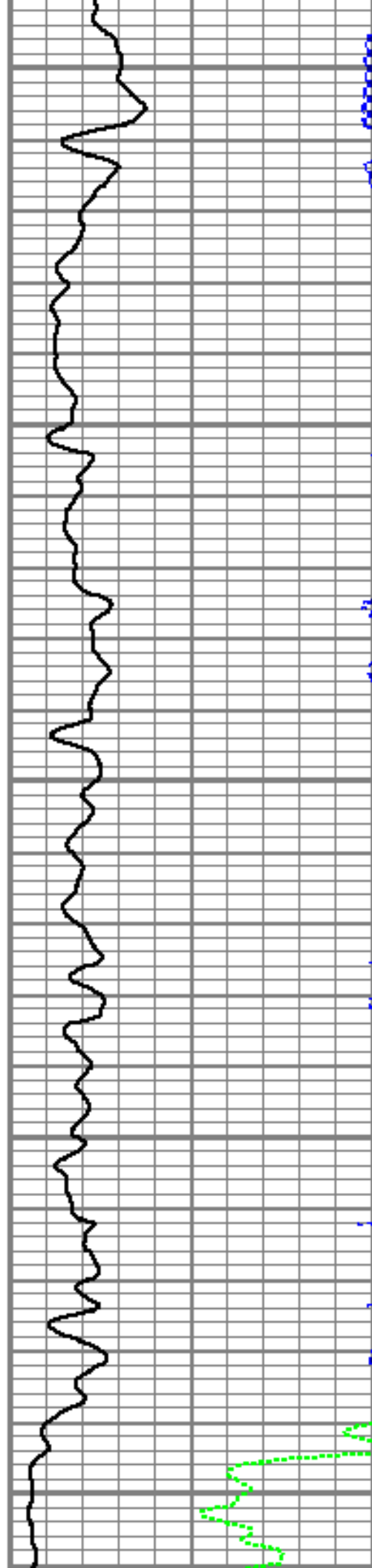
7050

7100

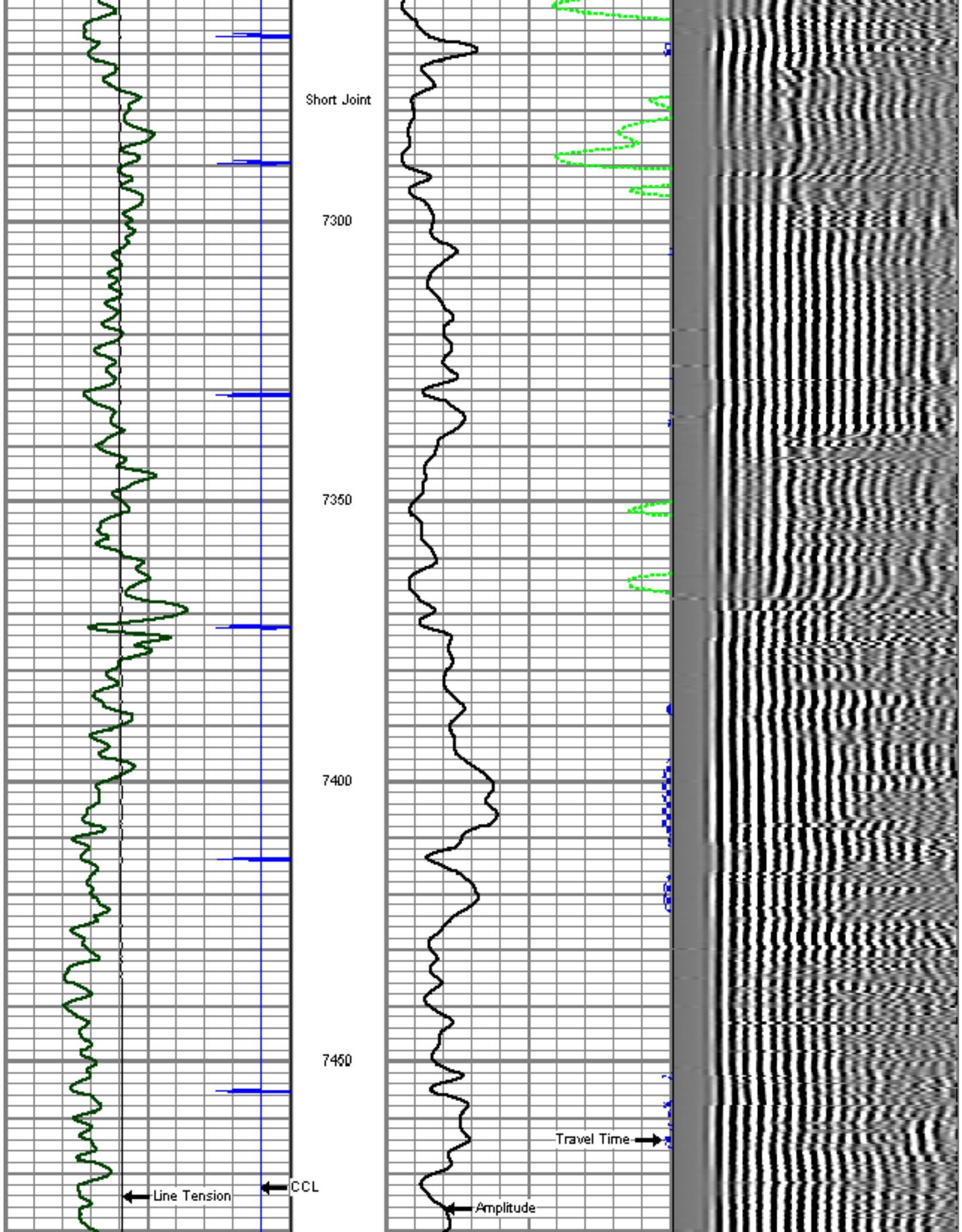
7150

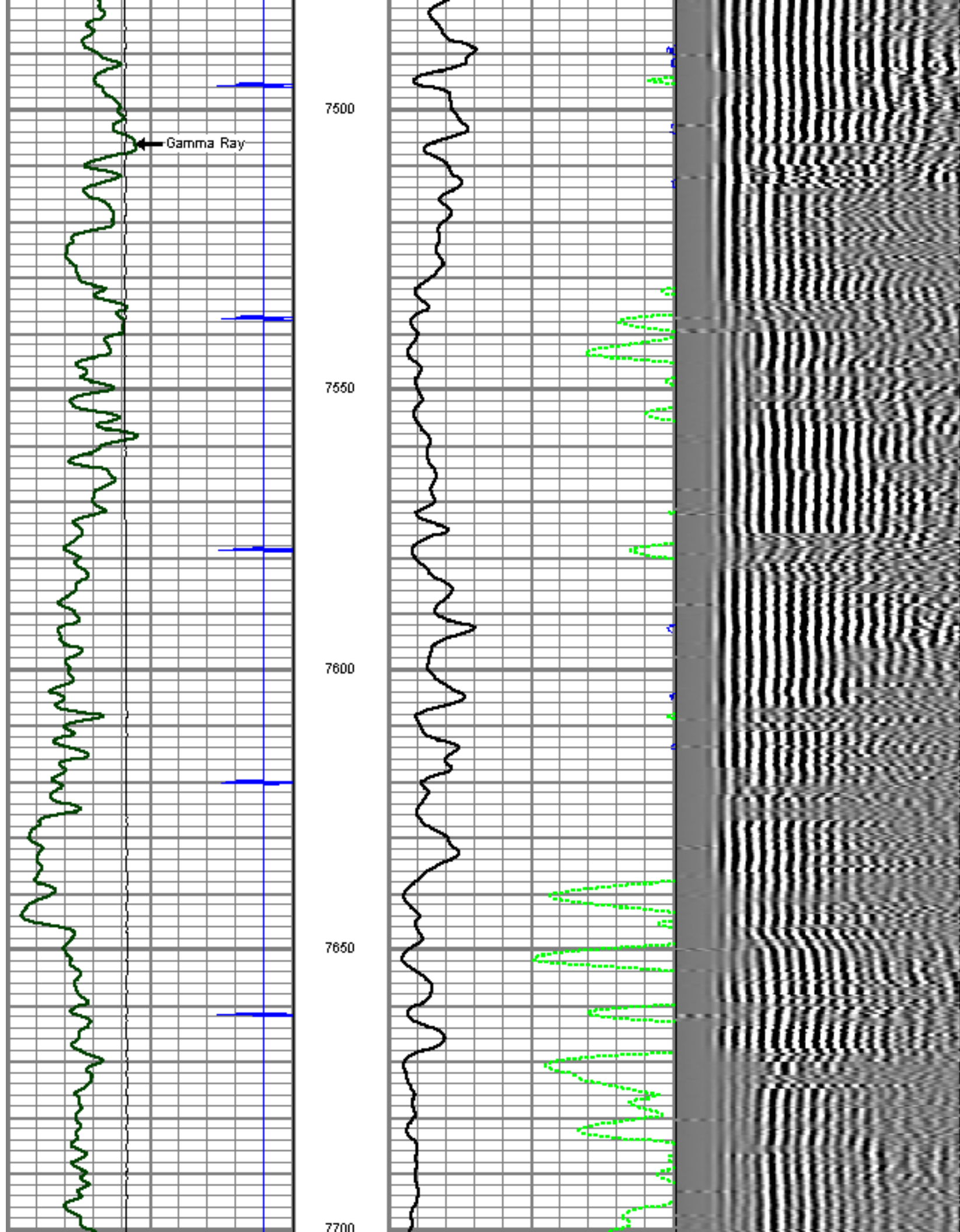
7200

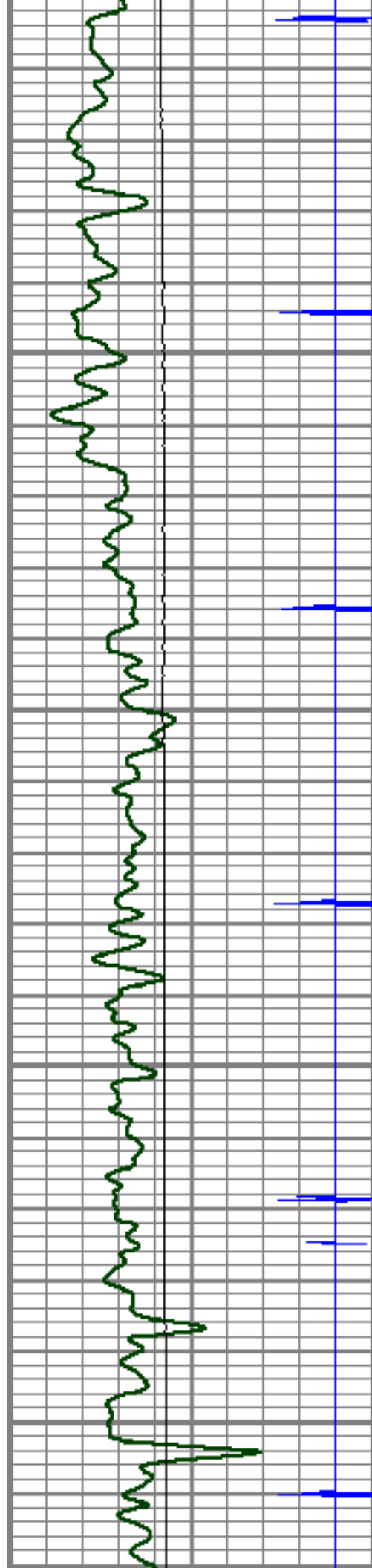
7250









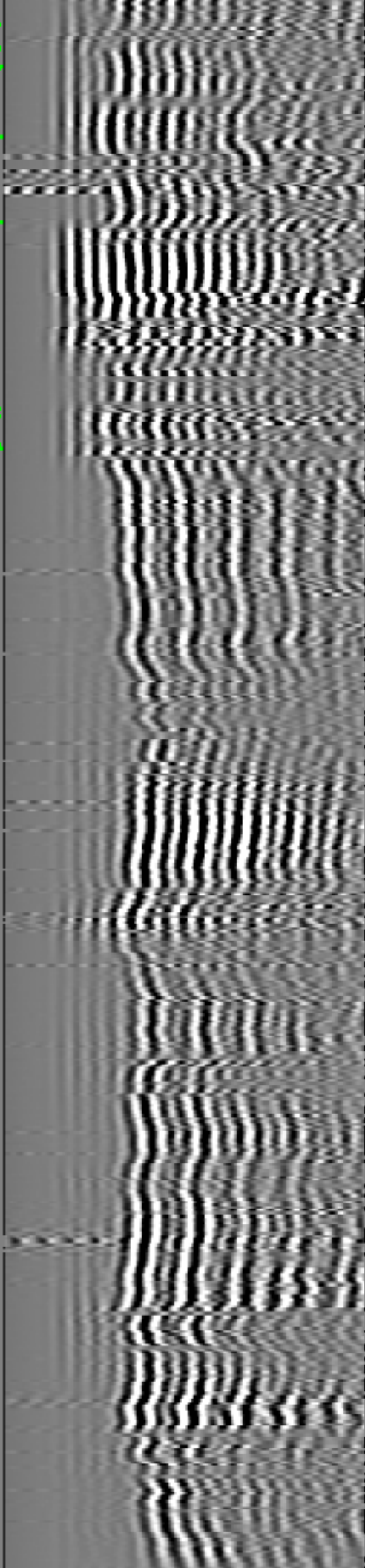
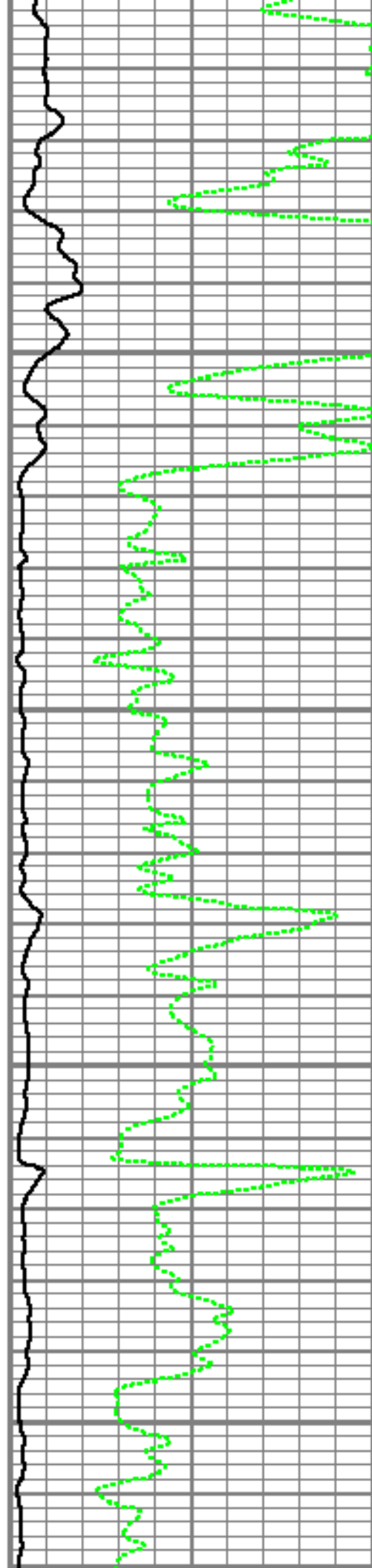


7750

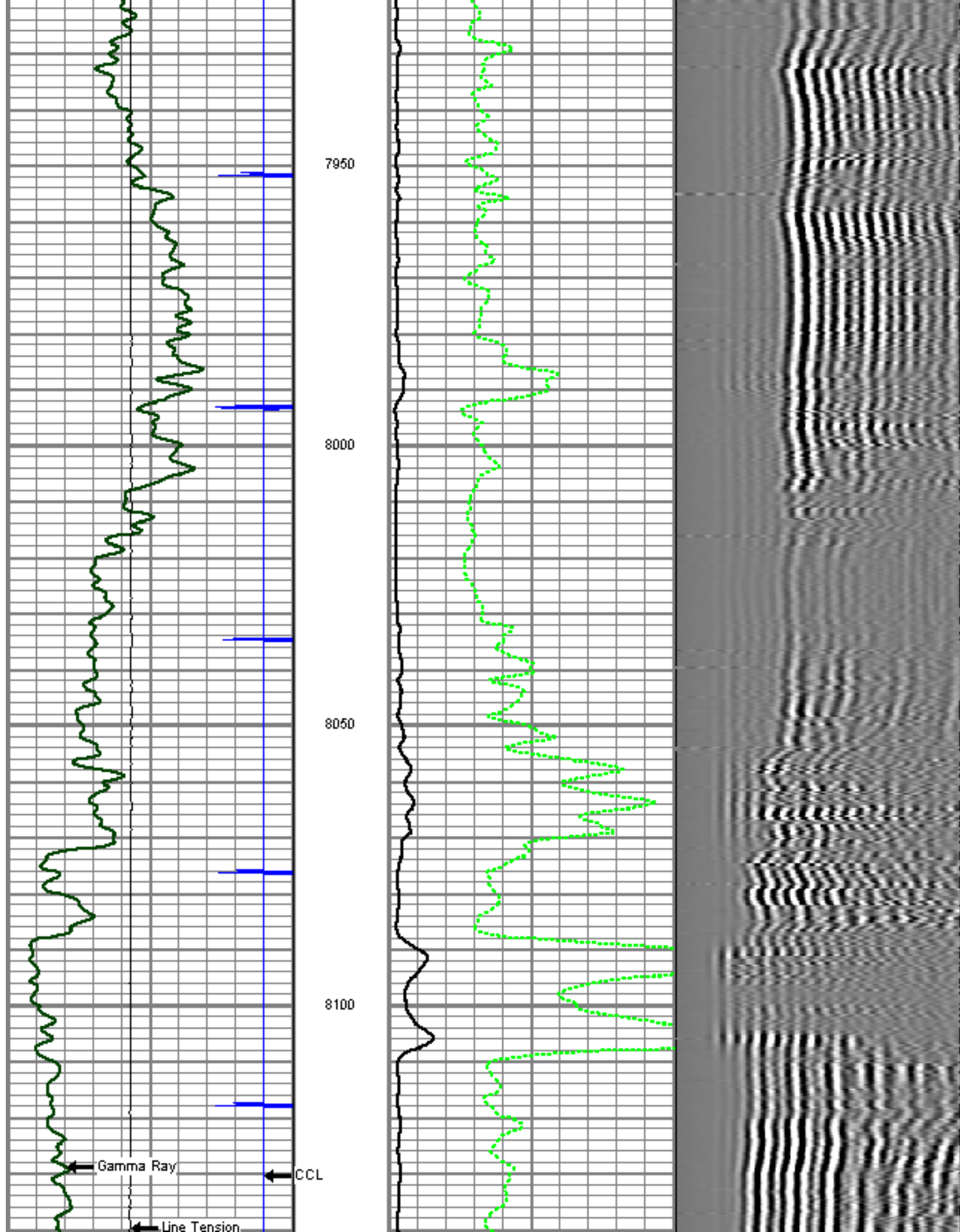
7800

7850

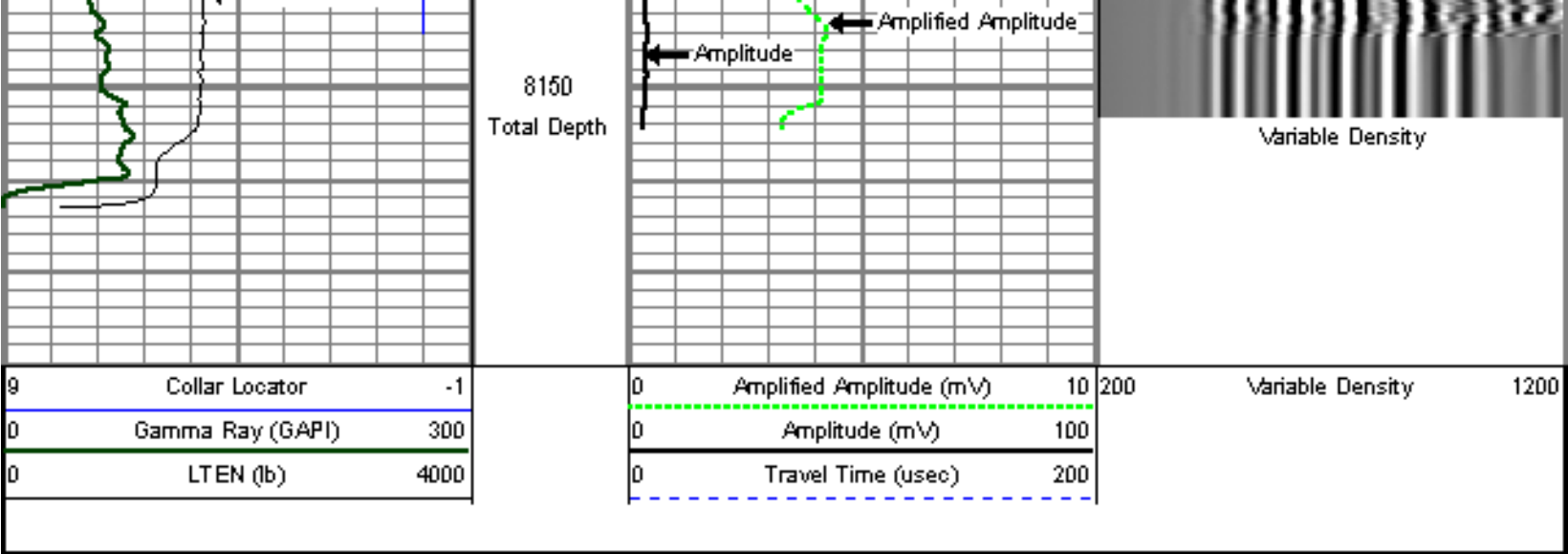
7900



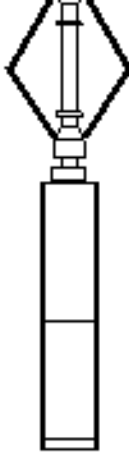









Sensor	Offset (ft)	Schematic	Description	Len (ft)	OD (in)	Wt (lb)
CCL	18.54		titan	1.00	1.69	2.00
			SNDX_CCL-SNDX_3_13_CCL (000001) CSS Gamma Ray CCL (CCL Section)	1.92	3.13	11.02
			SONDEX	2.71	2.75	32.00
WVFS3FT	10.78		SNDX_RBT-007 (000004) Radial Bore Tool - Analog 3 1/8	9.47	3.13	140.00
WVFS1	10.78					
WVFS2	10.78					
WVFS3	10.78					
WVFS4	10.78					
WVFS5	10.78					
WVFS6	10.78					
WVFS7	10.78					
WVFS8	10.78					
WVFS5FT	9.78					

GR	2.03		SONDEX	2.71	2.75	32.00
			SNDX_GR-SNDX_3_13_GR (000002) Sondex Production Gamma Ray	2.94	3.13	22.05
Dataset: east rinn 3.db: field/well/run1/pass6 Total Length: 20.75 ft Total Weight: 239.07 lb O.D. 3.13 in						

	Company	ENCANA OIL & GAS (USA) INC.
	Well	EAST RINN 3-6-15
	Field	WATTENBURG
	County	WELD
	State	COLORADO