
OXY GRAND JUNCTION EBUSINESS

**CC 697-09-46-2
GRANDVALLEY
Garfield County , Colorado**

Cement Surface Casing

Post Job Report

The Road to Excellence Starts with Safety

Sold To #: 344034		Ship To #: 2865813		Quote #:		Sales Order #: 8307512	
Customer: OXY GRAND JUNCTION EBUSINESS				Customer Rep: Benevides, Victor			
Well Name: CC			Well #: 697-09-46-2			API/UWI #: 05-045-20396	
Field: GRANDVALLEY		City (SAP): PARACHUTE		County/Parish: Garfield		State: Colorado	
Lat: N 39.535 deg. OR N 39 deg. 32 min. 6.23 secs.				Long: W 108.222 deg. OR W -109 deg. 46 min. 40.13 secs.			
Contractor: H&P 330			Rig/Platform Name/Num: H&P 330				
Job Purpose: Cement Surface Casing							
Well Type: Development Well			Job Type: Cement Surface Casing				
Sales Person: ROYSTER, JACOB			Srvc Supervisor: HOEFER, BRYAN			MBU ID Emp #: 415775	

Job Personnel

HES Emp Name	Exp Hrs	Emp #	HES Emp Name	Exp Hrs	Emp #	HES Emp Name	Exp Hrs	Emp #
ANDERSON, ADAM S	14	456683	BANKS, BRENT A	14	371353	HOEFER, BRYAN D	14	415775
JENKINS, DEMON Lashaun	14	457892	ROSE, BENJAMIN Keith	14	487022			

Equipment

HES Unit #	Distance-1 way	HES Unit #	Distance-1 way	HES Unit #	Distance-1 way	HES Unit #	Distance-1 way
10713294	120 mile	10784080	120 mile	10804579	120 mile	10856450	120 mile
10872429	120 mile	10897909	120 mile	10938657	120 mile	10938673	120 mile
10969711	120 mile	11259885	120 mile	11360883	120 mile		

Job Hours

Date	On Location Hours	Operating Hours	Date	On Location Hours	Operating Hours	Date	On Location Hours	Operating Hours
7/14/2011	14	5						

TOTAL Total is the sum of each column separately

Job

Formation Name	Job	Date	Time	Time Zone
Formation Depth (MD)	Top Bottom	Called Out	13 - Jul - 2011	22:30 MST
Form Type	BHST	On Location	14 - Jul - 2011	05:30 MST
Job depth MD	2715. ft	Job Depth TVD	2715. ft	Job Started
Water Depth		Wk Ht Above Floor	4. ft	Job Completed
Perforation Depth (MD)	From To	Departed Loc		

Well Data

Description	New / Used	Max pressure psig	Size in	ID in	Weight lbm/ft	Thread	Grade	Top MD ft	Bottom MD ft	Top TVD ft	Bottom TVD ft
-------------	------------	-------------------	---------	-------	---------------	--------	-------	-----------	--------------	------------	---------------

Sales/Rental/3rd Party (HES)

Description	Qty	Qty uom	Depth	Supplier
PLUG,CMTG,TOP,9 5/8,HWE,8.16 MIN/9.06 MA	1	EA		

Tools and Accessories

Type	Size	Qty	Make	Depth	Type	Size	Qty	Make	Depth	Type	Size	Qty	Make
Guide Shoe					Packer					Top Plug	9.625"	1	
Float Shoe					Bridge Plug					Bottom Plug			
Float Collar					Retainer					SSR plug set			
Insert Float										Plug Container	9.625"	1	
Stage Tool										Centralizers			

Miscellaneous Materials

Gelling Agt	Conc	Surfactant	Conc	Acid Type	Qty	Conc	%
Treatment Fld	Conc	Inhibitor	Conc	Sand Type	Size	Qty	

Fluid Data

Stage/Plug #: 1	Fluid Name	Qty	Qty uom	Mixing Density lbm/gal	Yield ft3/sk	Mix Fluid Gal/sk	Rate bbl/min	Total Mix Fluid Gal/sk
Fluid #	Stage Type							

1	Water Spacer		20.00	bbl	8.33	.0	.0	5	
2	Gel Spacer		20.00	bbl	.	.0	.0	5	
3	Water Spacer		20.00	bbl	.	.0	.0	5	
4	Lead Cement	VERSACEM (TM) SYSTEM (452010)	1050.0	sacks	12.3	2.33	12.62	7	12.62
	12.62 Gal	FRESH WATER							
5	Tail Cement	VERSACEM (TM) SYSTEM (452010)	169.0	sacks	12.8	2.07	10.67	7	10.67
	10.67 Gal	FRESH WATER							
6	Displacement		205.00	bbl	.	.0	.0	6	
7	Topout Cement	HALCEM (TM) SYSTEM (452986)		sacks	12.5	1.97	10.96		10.96
	10.96 Gal	FRESH WATER							
Calculated Values		Pressures		Volumes					
Displacement	205	Shut In: Instant		Lost Returns	0	Cement Slurry	498	Pad	
Top Of Cement	SURFACE	5 Min		Cement Returns	166	Actual Displacement	205	Treatment	
Frac Gradient		15 Min		Spacers	60	Load and Breakdown		Total Job	
Rates									
Circulating	5	Mixing	7	Displacement	6	Avg. Job	6		
Cement Left In Pipe	Amount	47.60 ft	Reason	Shoe Joint					
Frac Ring # 1 @	ID	Frac ring # 2 @	ID	Frac Ring # 3 @	ID	Frac Ring # 4 @	ID		
The Information Stated Herein Is Correct				Customer Representative Signature					

The Road to Excellence Starts with Safety

Sold To #: 344034	Ship To #: 2865813	Quote #:	Sales Order #: 8307512
Customer: OXY GRAND JUNCTION EBUSINESS		Customer Rep: Benevides, Victor	
Well Name: CC	Well #: 697-09-46-2	API/UWI #: 05-045-20396	
Field: GRANDVALLEY	City (SAP): PARACHUTE	County/Parish: Garfield	State: Colorado
Legal Description:			
Lat: N 39.535 deg. OR N 39 deg. 32 min. 6.23 secs.		Long: W 108.222 deg. OR W -109 deg. 46 min. 40.13 secs.	
Contractor: H&P 330		Rig/Platform Name/Num: H&P 330	
Job Purpose: Cement Surface Casing			Ticket Amount:
Well Type: Development Well		Job Type: Cement Surface Casing	
Sales Person: ROYSTER, JACOB		Srv Supervisor: HOEFER, BRYAN	MBU ID Emp #: 415775

Activity Description	Date/Time	Cht #	Rate bbl/min	Volume bbl		Pressure psig		Comments
				Stage	Total	Tubing	Casing	
Call Out	07/13/2011 22:30							
Pre-Convoy Safety Meeting	07/14/2011 02:00							WITH ALL HES EE'S, HAD TO WAIT ON BULK TRUCKS TO BE LOADED BEFORE LEAVING YARD
Depart from Service Center or Other Site	07/14/2011 02:05							
Arrive At Loc	07/14/2011 05:30							ARRIVED .5 HRS EARLY, RUNNING CASING UPON ARRIVAL
Assessment Of Location Safety Meeting	07/14/2011 05:35							WITH ALL HES EE'S
Pre-Rig Up Safety Meeting	07/14/2011 05:45							WITH ALL HES EE'S
Rig-Up Equipment	07/14/2011 05:50							IRON TO FLOOR, WATER LINES, 1 660 BULK TRUCK, 2 FIELD STORAGE BINS, F-550
Pre-Job Safety Meeting	07/14/2011 11:30							WITH ALL HES EE'S AND RIG CREW
Start Job	07/14/2011 11:53							TD-2715', TP-2699', SJ-46.60', MUD-9.4#, OH-14 3/4", 9 5/8" CASING 36# J-55
Prime Pumps	07/14/2011 11:54		2	2			46.0	FRESH WATER
Test Lines	07/14/2011 11:56		0.1	0.1			3500.0	TESTED TO 3500psi, TEST HELD GREAT
Pump Spacer	07/14/2011 11:59		4	20			236.0	FRESH WATER
Pump Spacer	07/14/2011 12:03		4	20			180.0	GEL SPACER (LGC-36)

Activity Description	Date/Time	Cht #	Rate bbl/min	Volume bbl		Pressure psig		Comments
				Stage	Total	Tubing	Casing	
Pump Spacer	07/14/2011 12:07		4	20			190.0	FRESH WATER
Pump Lead Cement	07/14/2011 12:11		7	435.7			480.0	1050sks OF VERSACEM PUMPED @ 12.3#, 2.33 ft3/sk, 12.62 gal/sk
Pump Tail Cement	07/14/2011 13:24		7	62.3			400.0	160sks OF VERSACEM PUMPED @ 12.8#, 2.07 ft3/sk, 10.67 gal/sk
Shutdown	07/14/2011 13:34							
Drop Top Plug	07/14/2011 13:35							PLUG LEFT HEAD
Pump Displacement	07/14/2011 13:36		7	205			550.0	FRESH WATER
Slow Rate	07/14/2011 14:24		2	190			600.0	LAST 15 BBLS
Other	07/14/2011 14:32							PLUG DID NOT BUMP ON CALCULATED DISPLACEMENT SO WE SHUT DOWN AND VICTOR MADE A CALL THEY SAID GO AHEAD AND BUMP SOME MORE ON IT ONCE WE STARTED PUMPING IT PRESSURED UP RIGHT AWAY
Bump Plug	07/14/2011 14:44		2	205			1080.0	TOOK 500psi OVER
Check Floats	07/14/2011 14:49							FLOATS HELD
Other	07/14/2011 14:54							START CASING TEST OF 1500psi
Other	07/14/2011 15:28							END CASING TEST
End Job	07/14/2011 15:31							GOOD RETURNS THROUGHOUT JOB, 166 BBLS OF CEMENT BACK TO THE PIT
Start Job	07/14/2011 16:58							TOP OUT
Pump Cement	07/14/2011 17:01							PUMPED 2 bbls OF TOP OUT CEMENT, THEN HAD CEMENT TO SURFACE
Shutdown	07/14/2011 17:02							

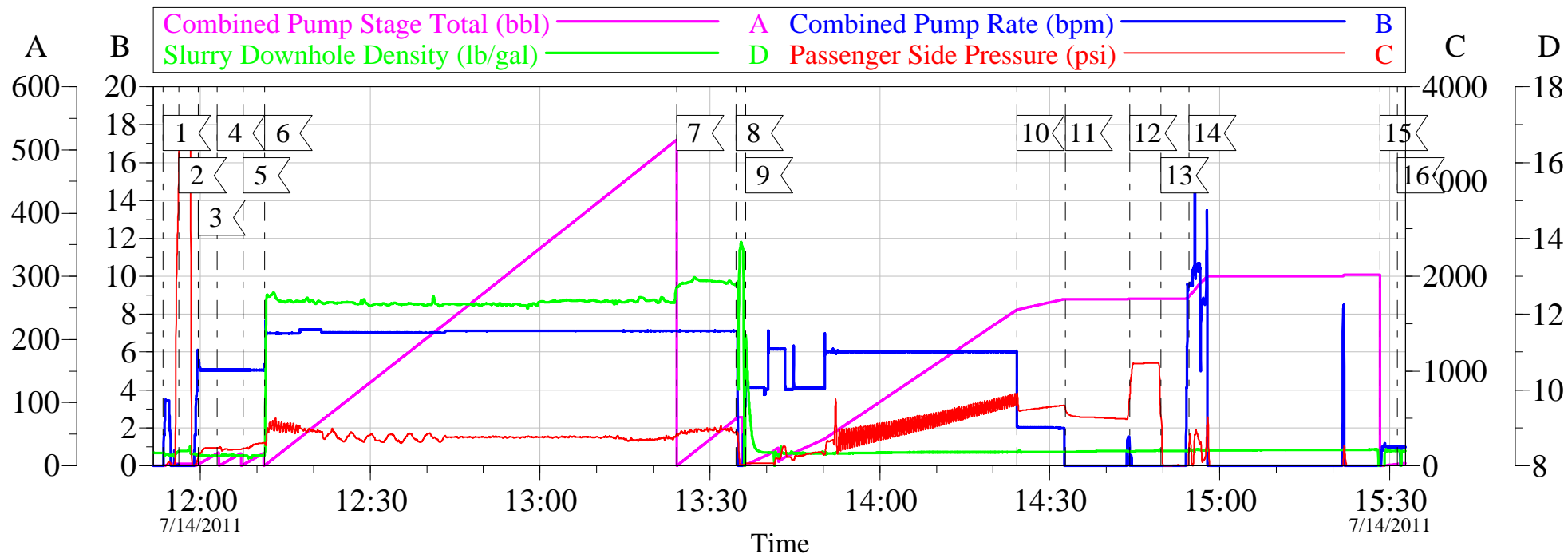
Cementing Job Log

Activity Description	Date/Time	Cht #	Rate bbl/ min	Volume bbl		Pressure psig		Comments
				Stage	Total	Tubing	Casing	
End Job	07/14/2011 17:02							
Post-Job Safety Meeting (Pre Rig-Down)	07/14/2011 17:05							WITH ALL HES EE'S
Pump Spacer	07/14/2011 17:43							FRESH WATER TO PRIME LINES
Rig-Down Equipment	07/14/2011 18:30							
Pre-Convoy Safety Meeting	07/14/2011 19:25							WITH ALL HES EE'S
Depart Location for Service Center or Other Site	07/14/2011 19:30							THANK YOU FOR USING GRAND JUNCTION HALLIBURTON CEMENT, BRYAN HOEFER AND CREW

EVENT #	EVENT	VOLUME	SACKS	WEIGHT	YIELD	GAL/ SK
1	Start Job					
6	Test Lines	3500.0				
	H2O Spacer	20.0				
	GEL SPACER	20.0				
	H2O SPACER	20.0				
	LEAD CEMENT	435.7	1050	12.3	2.33	12.62
15	Tail Cement	62.3	169	12.8	2.07	10.67
	SHUTDOWN	0.0				
22	Drop Plug	0.0				
23	Displace with H2O	205.0				
26	Land Plug	548.0				
2	Release Psi / Job Over	0.0				
			Do Not Overdisplace			
DISPLACEMENT	TOTAL PIPE	SHOE JOINT LENGTH		FLOAT COLLAR	BBL/FT	H2O REQ.
205.03	2699	46.60		2652.40	0.0773	700
PSI to Lift Pipe	1155	*****Use Mud Scales on Each Tier*****				
Total Displacement	205.03					
CALCULATED DIFFERENTIAL PSI		510		TOTAL FLUID PUMPED		765
Collapse	2,020	Burst	3520		SO#	8070068

OXY

CC-697-09-46-2, SURFACE



Local Event Log

1 START JOB	11:53:28	2 TEST LINES	11:56:13
3 PUMP FRESH WATER	11:59:37	4 PUMP GEL SPACER	12:03:02
5 PUMP FRESH WATER	12:07:32	6 PUMP LEAD CEMENT	12:11:23
7 PUMP TAIL CEMENT	13:24:06	8 SHUT DOWN/DROP TOP PLUG	13:34:35
9 PUMP DISPLACEMENT	13:36:17	10 SLOW RATE	14:24:12
11 SHUT DOWN PLUG DID NOT BUMP	14:32:44	12 BUMP PLUG	14:44:05
13 CHECK FLOATS	14:49:38	14 START CASING TEST	14:54:34
15 END CASING TEST	15:28:21	16 END JOB	15:31:21

Customer: OXY
Well Description: CC-697-09-46-2

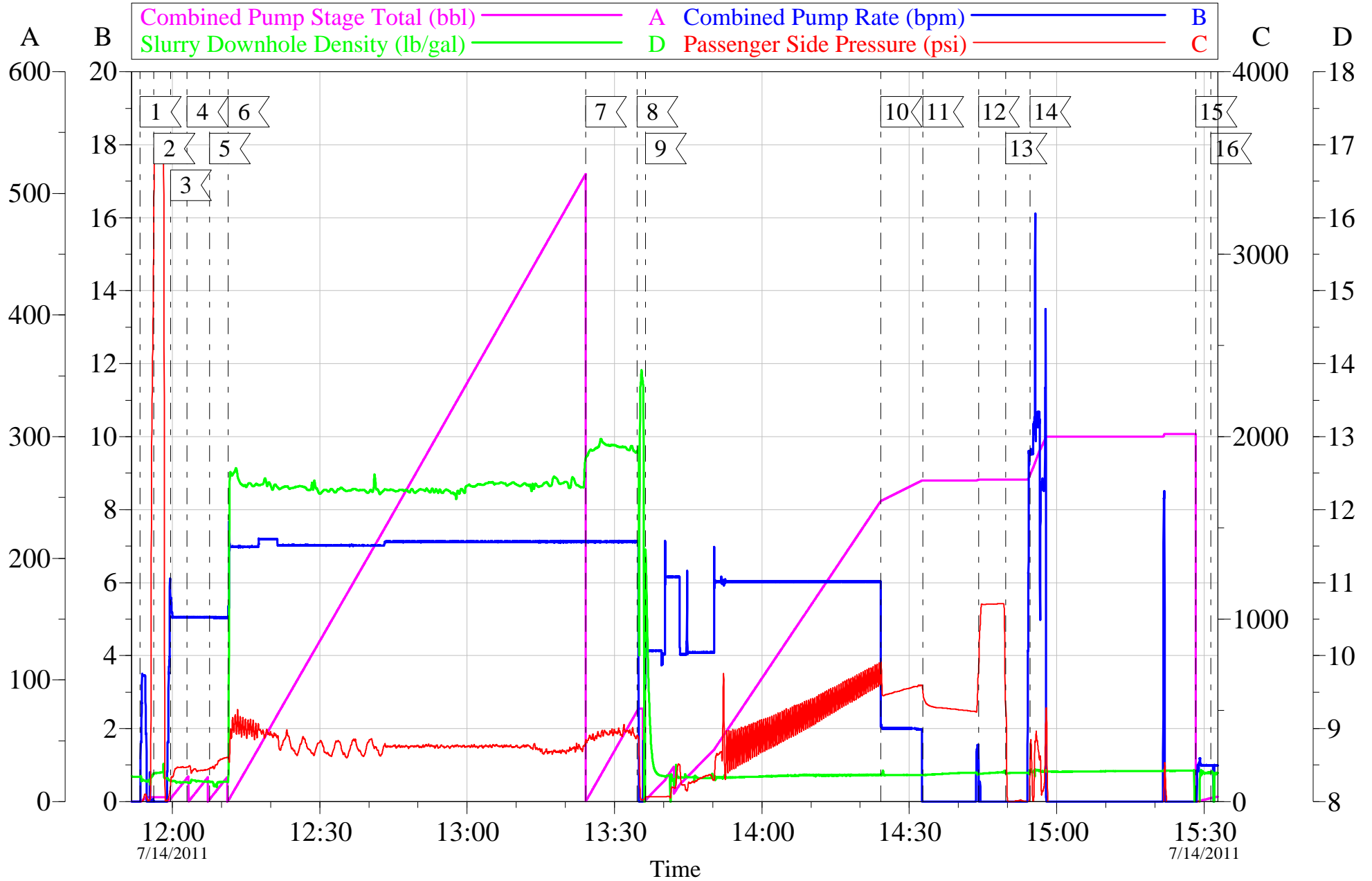
Job Date: 14-Jul-2011
JOB TYPE: SURFACE

Sales Order #: 8307512
ADC USED: YES

OptiCem v6.4.9
14-Jul-11 18:35

OXY

CC-697-09-46-2, SURFACE



Customer: OXY
Well Description: CC-697-09-46-2

Job Date: 14-Jul-2011
JOB TYPE: SURFACE

Sales Order #: 8307512
ADC USED: YES

OptiCem v6.4.9
14-Jul-11 18:35

Sales Order #: 8307512	Line Item: 10	Survey Conducted Date: 7/14/2011
Customer: OXY GRAND JUNCTION EBUSINESS		Job Type (BOM): CMT SURFACE CASING BOM
Customer Representative: VICTOR BENEVIDES		API / UWI: (leave blank if unknown) 05-045-20396
Well Name: CC		Well Number: 697-09-46-2
Well Type: Development Well	Well Country: United States of America	
H2S Present:	Well State: Colorado	Well County: Garfield

Dear Customer,

We hope that you were satisfied with the service quality of this job performed by Halliburton. It is the aim of our management and service personnel to deliver equipment and service of a standard unmatched in the service sector of the energy industry.

Please take the time to let us know if our performance met with your satisfaction. Please be as critical as possible to ensure we constantly improve our service. Your comments are of great value to us and are intended for the exclusive use of Halliburton.

CUSTOMER SATISFACTION SURVEY

CATEGORY	CUSTOMER SATISFACTION RESPONSE	
Survey Conducted Date	The date the survey was conducted	7/14/2011
Survey Interviewer	The survey interviewer is the person who initiated the survey.	BRYAN HOEFER (HB40569)
Customer Participation	Did the customer participate in this survey? (Y/N)	Yes
Customer Representative	Enter the Customer representative name	VICTOR BENEVIDES
HSE	Was our HSE performance satisfactory? Circle Y or N	Yes
Equipment	Were you satisfied with our Equipment? Circle Y or N	Yes
Personnel	Were you satisfied with our people? Circle Y or N	Yes
Customer Comment	Customer's Comment	
Job DVA	Did we provide job DVA above our normal service today? Circle Y or N	No
Time	Please enter hours in decimal format to nearest quarter hour.	
Other	Enter short text for other efficiencies gained.	
Customer Initials	Customer's Initials	
Please provide details	Please describe how the job efficiencies were gained.	

CUSTOMER SIGNATURE

Sales Order #: 8307512	Line Item: 10	Survey Conducted Date: 7/14/2011
Customer: OXY GRAND JUNCTION EBUSINESS		Job Type (BOM): CMT SURFACE CASING BOM
Customer Representative: VICTOR BENEVIDES		API / UWI: (leave blank if unknown) 05-045-20396
Well Name: CC		Well Number: 697-09-46-2
Well Type: Development Well	Well Country: United States of America	
H2S Present:	Well State: Colorado	Well County: Garfield

KEY PERFORMANCE INDICATORS

General	
Survey Conducted Date The date the survey was conducted	7/14/2011

Cementing KPI Survey	
Type of Job Select the type of job. (Cementing or Non-Cementing)	0
Select the Maximum Deviation range for this Job What is the highest deviation for the job you just completed? This may not be the maximum well deviation.	Vertical
Total Operating Time (hours) Total Operating Hours Including Rig-up, Pumping, Rig-down. Enter in decimal format.	5
HSE Incident, Accident, Injury HSE Incident, Accident, Injury. This should be recordable incidents only.	No
Was the job purpose achieved? Was the job delivered correctly as per customer agreed design?	Yes
Operating Hours (Pumping Hours) Total number of hours pumping fluid on this job. Enter in decimal format.	4
Customer Non-Productive Rig Time (hrs) Lost time due to Halliburton in the start, execution, or completion of an ordered service or product, or delays in a follow-on service. Enter in decimal format. 0 if none.	0
Type of Rig Classification Job Was Performed Type Of Rig (classification) Job Was Performed On	Drilling Rig (Portable)
Number Of JSAs Performed Number Of Jsas Performed	7
Number of Unplanned Shutdowns Unplanned shutdown is when injection stops for any period of time.	0
Was this a Primary Cement Job (Yes / No)	Yes

Sales Order #: 8307512	Line Item: 10	Survey Conducted Date: 7/14/2011
Customer: OXY GRAND JUNCTION EBUSINESS		Job Type (BOM): CMT SURFACE CASING BOM
Customer Representative: VICTOR BENEVIDES		API / UWI: (leave blank if unknown) 05-045-20396
Well Name: CC		Well Number: 697-09-46-2
Well Type: Development Well	Well Country: United States of America	
H2S Present:	Well State: Colorado	Well County: Garfield

Primary Cement Job= Casing job, Liner job, or Tie-back job.	
Did We Run Wiper Plugs? Did We Run Top And Bottom Casing Wiper Plugs?	Top
Mixing Density of Job Stayed in Designed Density Range (0-100%) Density Range defined as +/- .20 ppg. Calculation: Total BBLs cement mixed at designed density divided by total BBLs of cement multiplied by 100	95
Was Automated Density Control Used? Was Automated Density Control (ADC) Used ?	Yes
Pump Rate (percent) of Job Stayed At Designed Pump Rate Pump Rate range defined as +/- 1bbl/min. Calculation: Total BBLs of fluid pumped at the designed rate divided by Total BBLs of fluid pumped, multiplied by 100	95
Nbr of Remedial Sqz Jobs Rqd - Competition Number Of Remedial Squeeze Jobs Required After Primary Job Performed By Competition	0
Nbr of Remedial Plug Jobs Rqd - HES Number Of Remedial Plug Jobs Needed After Primary Plug Pumped By HES	0
Nbr of Remedial Sqz Jobs Rqd - HES Number Of Remedial Squeeze Jobs Required After Primary Job Performed By HES	0