

05-123-33244-01



WELL DETAILS: FRANKLIN C08-62HN  
Ground Level: 4796.0  
Easting: 325506.62  
Northing: 1361107.14  
+N-S 4-E-W 0.0 0.0

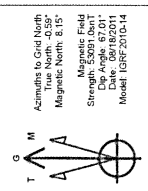


Project: SEC-7-T4N-R64W  
Site: Franklin C08-62HN PAD 7-4N-64W  
Well: FRANKLIN C08-62HN  
Wellbore: STK #1  
Design: Plan #1

PHOENIX  
TECHNOLOGY SERVICES

SECTION DETAILS

Sec	MD	Inc	Adj	TVD	+N-S	+E-W	DLdg	TFace	VSec	Target
1	7026.0	70.58	89.41	6786.5	26.0	753.2	0.00	0.00	753.7	0.00
2	7281.4	73.39	100.22	6966.7	-3.8	1862.3	5.55	35.56	1867.8	0.00
3	7281.4	73.39	100.22	6966.7	-3.8	1862.3	5.55	35.56	1867.8	0.00
4	6302.2	90.00	86.97	6910.0	-78.6	3015.5	0.00	0.00	3015.4	0.00
5	6302.2	90.00	86.97	6910.0	-78.6	3015.5	0.00	0.00	3015.4	0.00
6	6302.2	90.00	86.97	6910.0	-78.6	3015.5	0.00	0.00	3015.4	0.00
7	6302.2	90.00	86.97	6910.0	-78.6	3015.5	0.00	0.00	3015.4	0.00

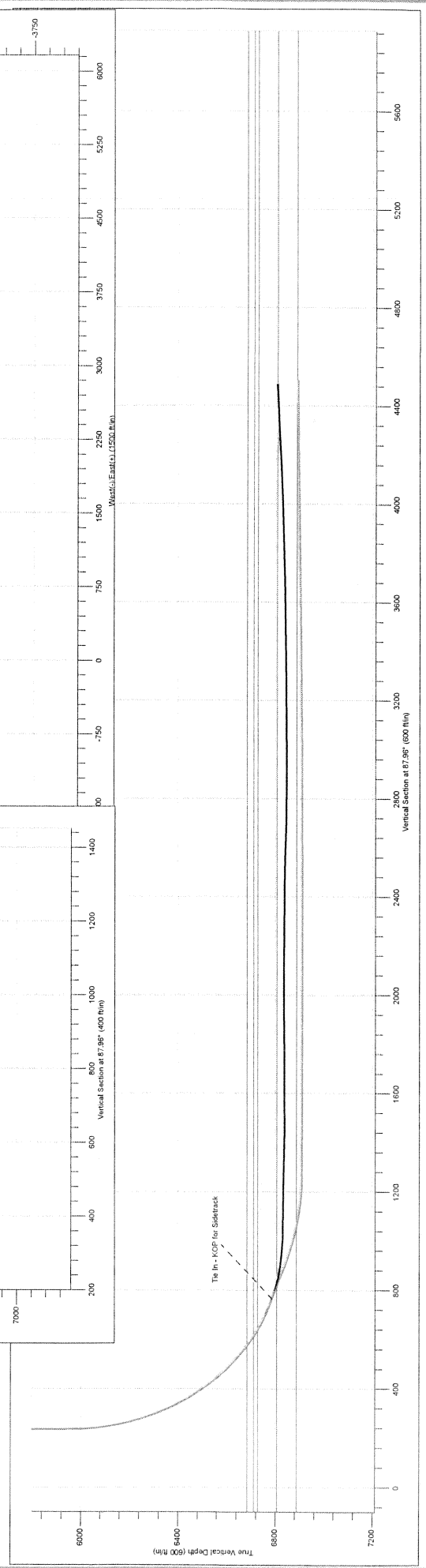
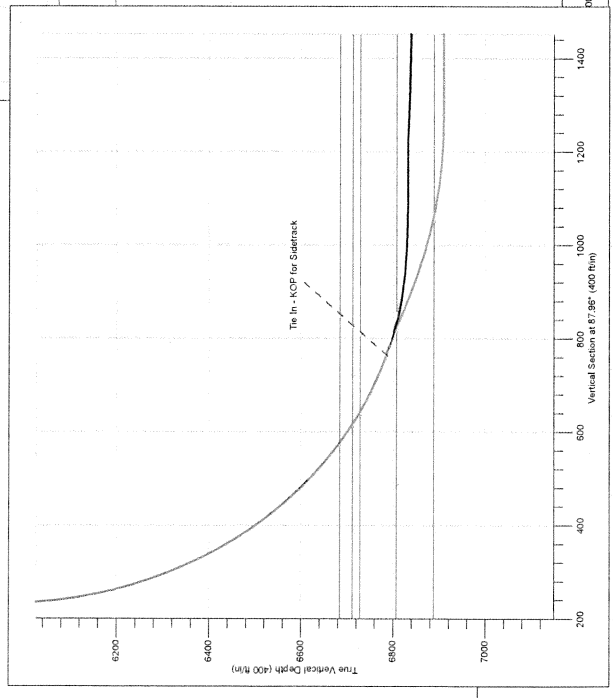
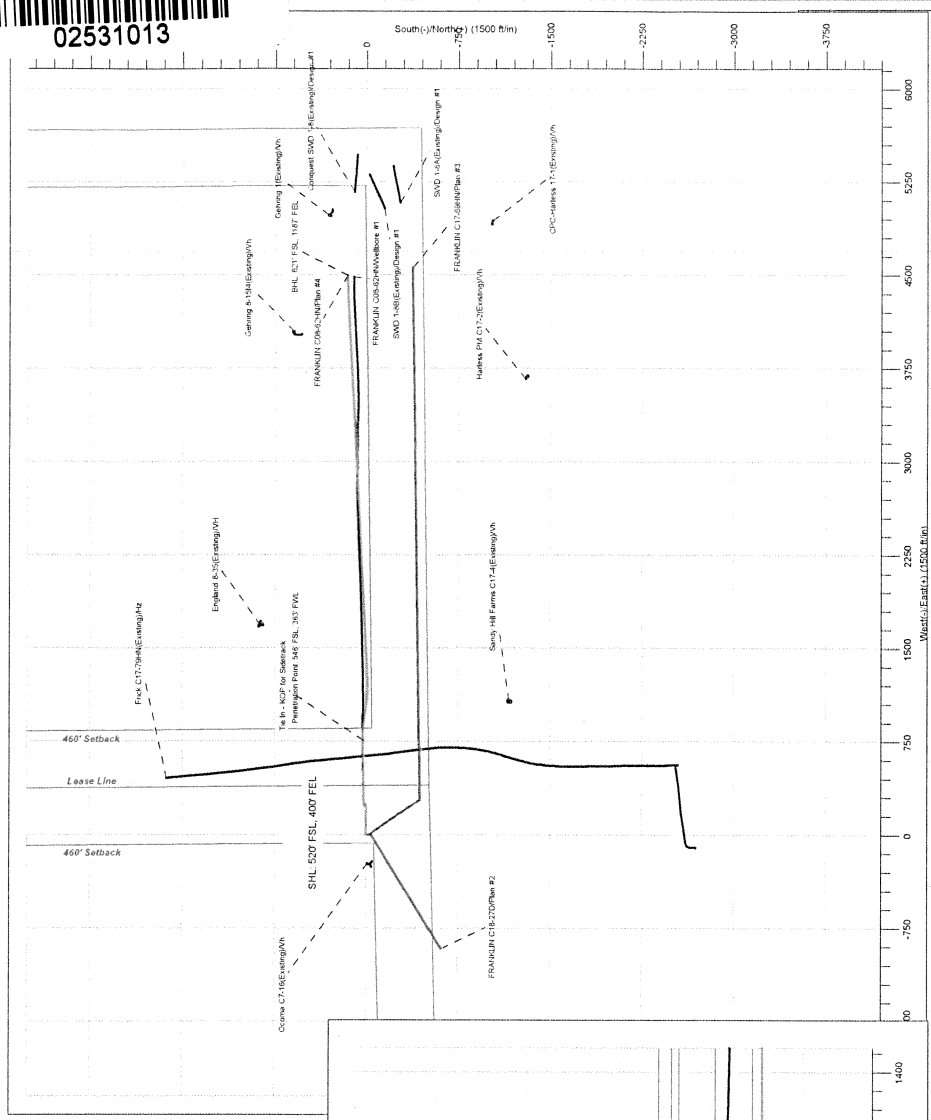


ANNOTATIONS

TVD	MD	Annotation
6786.5	7026.0	Tie In - KOP for Siderack
6981.0	10767.0	BHL 621 FSL 1187 FEL

FORMATION TOP DETAILS

TVD Path	MD Path	Formation
6713.0	6889.8	Top Nebraska
6713.0	6889.8	Top Nebraska
6809.0	7081.5	Nebraska B
6860.0	7348.9	Nebraska C



**RECEIVED**

AUG 24 2011

**COGCC**

## **Northern Region Drilling**

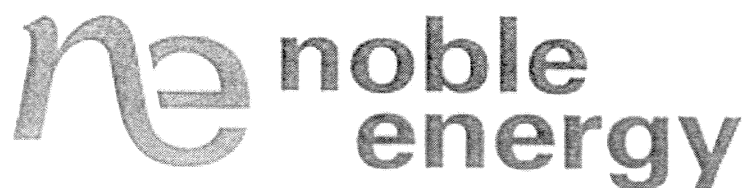
Wattenberg Field  
C (04N-64W)  
Franklin C08-62HN  
ST#1

Plan: Plan #3

## **Standard Planning Report**

19 August, 2011

01



Noble Energy Inc  
Planning Report



Database: edm10p  
Company: Northern Region Drilling  
Project: Wattenberg Field  
Site: C (04N-64W)  
Well: Franklin C08-62HN  
Wellbore: ST#1  
Design: Plan #3

Local Co-ordinate Reference: Well Franklin C08-62HN  
TVD Reference: RIG @ 4811.0ft (Ensign 132 (13' KB))  
MD Reference: RIG @ 4811.0ft (Ensign 132 (13' KB))  
North Reference: Grid  
Survey Calculation Method: Minimum Curvature

Project	Wattenberg Field, Weld County CO		
Map System:	US State Plane 1983	System Datum:	Mean Sea Level
Geo Datum:	North American Datum 1983		
Map Zone:	Colorado Northern Zone		Using geodetic scale factor

Site	C (04N-64W)				
Site Position:		Northing:	1,358,418.19ft	Latitude:	40° 18' 49.140 N
From:	Lat/Long	Easting:	3,254,973.00ft	Longitude:	104° 35' 8.376 W
Position Uncertainty:	0.0 ft	Slot Radius:	"	Grid Convergence:	0.59 °

Well	Franklin C08-62HN					
Well Position	+N/-S	0.0 ft	Northing:	1,361,107.14 ft	Latitude:	40° 19' 15.708 N
	+E/-W	0.0 ft	Easting:	3,255,006.62 ft	Longitude:	104° 35' 7.584 W
Position Uncertainty	0.0 ft	Wellhead Elevation:	ft	Ground Level:	4,798.0 ft	

Wellbore	ST#1				
Magnetics	Model Name	Sample Date	Declination (°)	Dip Angle (°)	Field Strength (nT)
	IGRF200510	12/31/2009	8.92	67.07	53,282

Design	Plan #3			
Audit Notes:				
Version:	Phase:	PROTOTYPE	Tie On Depth:	6,977.0
Vertical Section:	Depth From (TVD) (ft)	+N/-S (ft)	+E/-W (ft)	Direction (°)
	0.0	0.0	0.0	88.10

Plan Sections

Measured Depth (ft)	Inclination (°)	Azimuth (°)	Vertical Depth (ft)	+N/-S (ft)	+E/-W (ft)	Dogleg Rate (°/100ft)	Build Rate (°/100ft)	Turn Rate (°/100ft)	TFO (°)	Target
6,977.0	66.60	88.90	6,768.6	25.5	717.6	0.00	0.00	0.00	0.00	
7,007.0	66.62	91.51	6,780.5	25.4	745.2	8.00	0.07	8.72	90.00	
7,107.0	66.86	100.22	6,820.1	16.0	836.5	8.00	0.24	8.70	90.00	
7,250.0	73.39	100.22	6,868.7	-7.8	968.7	4.56	4.56	0.00	0.00	
7,536.0	90.00	86.97	6,910.0	-24.8	1,249.6	7.39	5.81	-4.63	-39.48	
9,290.8	90.00	86.97	6,910.0	68.0	3,001.9	0.00	0.00	0.00	0.00	
9,315.1	90.73	86.97	6,909.8	69.3	3,026.2	3.00	3.00	0.00	0.00	
10,776.5	90.75	86.80	6,891.0	148.7	4,485.3	0.01	0.00	-0.01	-84.05	Franklin C08-62ST

Noble Energy Inc  
Planning Report



Database: edm10p  
Company: Northern Region Drilling  
Project: Wattenberg Field  
Site: C (04N-64W)  
Well: Franklin C08-62HN  
Wellbore: ST#1  
Design: Plan #3

Local Co-ordinate Reference: Well Franklin C08-62HN  
TVD Reference: RIG @ 4811.0ft (Ensign 132 (13' KB))  
MD Reference: RIG @ 4811.0ft (Ensign 132 (13' KB))  
North Reference: Grid  
Survey Calculation Method: Minimum Curvature

Planned Survey

Measured Depth (ft)	Inclination (°)	Azimuth (°)	Vertical Depth (ft)	+N/-S (ft)	+E/-W (ft)	Vertical Section (ft)	Dogleg Rate (°/100ft)	Build Rate (°/100ft)	Turn Rate (°/100ft)
696.0	0.00	0.00	696.0	0.0	0.0	0.0	0.00	0.00	0.00
744.0	0.20	99.40	744.0	0.0	0.1	0.1	0.42	0.42	0.00
805.0	0.10	341.70	805.0	0.0	0.2	0.2	0.43	-0.16	-192.95
897.0	0.00	213.70	897.0	0.1	0.1	0.1	0.11	-0.11	0.00
989.0	0.10	215.20	989.0	0.0	0.1	0.1	0.11	0.11	0.00
1,083.0	0.20	309.40	1,083.0	0.1	-0.1	-0.1	0.24	0.11	100.21
1,178.0	2.10	117.70	1,178.0	-0.6	1.3	1.3	2.42	2.00	177.16
1,274.0	2.90	95.00	1,273.9	-1.7	5.3	5.3	1.31	0.83	-23.65
1,369.0	4.10	95.30	1,368.7	-2.2	11.1	11.0	1.26	1.26	0.32
1,464.0	5.30	90.20	1,463.4	-2.5	18.9	18.8	1.34	1.26	-5.37
1,560.0	6.90	88.50	1,558.8	-2.4	29.1	29.0	1.68	1.67	-1.77
1,655.0	8.70	90.60	1,653.0	-2.3	41.9	41.9	1.92	1.89	2.21
1,751.0	11.30	90.80	1,747.5	-2.5	58.6	58.5	2.71	2.71	0.21
1,846.0	12.10	87.40	1,840.5	-2.2	77.9	77.8	1.11	0.84	-3.58
1,941.0	11.70	88.90	1,933.5	-1.6	97.4	97.3	0.53	-0.42	1.58
2,037.0	13.00	92.20	2,027.3	-1.8	118.0	117.8	1.54	1.35	3.44
2,131.0	13.40	91.60	2,118.8	-2.5	139.4	139.3	0.45	0.43	-0.64
2,228.0	12.90	90.50	2,213.2	-2.9	161.5	161.3	0.58	-0.52	-1.13
2,323.0	10.20	95.20	2,306.3	-3.8	180.5	180.2	3.01	-2.84	4.95
2,418.0	10.10	95.90	2,399.8	-5.4	197.1	196.8	0.17	-0.11	0.74
2,513.0	7.30	90.40	2,493.7	-6.3	211.5	211.1	3.07	-2.95	-5.79
2,609.0	5.90	91.80	2,589.1	-6.5	222.5	222.2	1.47	-1.46	1.46
2,704.0	5.00	78.00	2,683.6	-5.8	231.4	231.1	1.67	-0.95	-14.53
2,799.0	2.80	57.30	2,778.4	-3.7	237.4	237.2	2.71	-2.32	-21.79
2,894.0	2.20	60.70	2,873.3	-1.5	241.0	240.8	0.65	-0.63	3.58
2,989.0	1.40	103.20	2,968.3	-0.9	243.7	243.5	1.58	-0.84	44.74
3,084.0	1.30	133.30	3,063.3	-1.9	245.6	245.4	0.74	-0.11	31.68
3,179.0	0.10	115.60	3,158.3	-2.7	246.5	246.2	1.27	-1.26	-18.63
3,274.0	0.10	342.30	3,253.3	-2.6	246.5	246.3	0.19	0.00	-140.32
3,369.0	0.40	34.90	3,348.3	-2.3	246.7	246.5	0.37	0.32	55.37
3,464.0	0.80	15.60	3,443.3	-1.4	247.0	246.9	0.47	0.42	-20.32
3,559.0	1.00	345.60	3,538.2	0.1	247.0	246.9	0.53	0.21	-31.58
3,654.0	1.10	327.30	3,633.2	1.7	246.3	246.2	0.37	0.11	-19.26
3,749.0	1.30	320.20	3,728.2	3.3	245.1	245.1	0.26	0.21	-7.47
3,844.0	0.80	284.80	3,823.2	4.3	243.8	243.8	0.84	-0.53	-37.26
3,939.0	1.10	281.80	3,918.2	4.6	242.3	242.3	0.32	0.32	-3.16
4,034.0	0.60	245.00	4,013.2	4.6	240.9	240.9	0.75	-0.53	-38.74
4,130.0	0.70	249.60	4,109.2	4.2	239.9	239.9	0.12	0.10	4.79
4,225.0	0.60	258.00	4,204.2	3.9	238.9	238.9	0.15	-0.11	8.84
4,320.0	0.70	259.20	4,299.1	3.6	237.8	237.8	0.11	0.11	1.26
4,415.0	1.20	274.30	4,394.1	3.6	236.3	236.3	0.58	0.53	15.89
4,510.0	0.60	248.30	4,489.1	3.5	234.8	234.8	0.75	-0.63	-27.37
4,605.0	0.40	320.50	4,584.1	3.6	234.1	234.1	0.64	-0.21	76.00
4,700.0	0.40	342.40	4,679.1	4.2	233.8	233.8	0.16	0.00	23.05
4,795.0	1.00	331.30	4,774.1	5.2	233.3	233.4	0.64	0.63	-11.68
4,890.0	0.70	349.00	4,869.1	6.5	232.8	232.9	0.42	-0.32	18.63
4,985.0	1.30	349.20	4,964.1	8.1	232.5	232.7	0.63	0.63	0.21
5,080.0	0.30	318.80	5,059.1	9.4	232.1	232.3	1.11	-1.05	-32.00
5,175.0	0.60	316.10	5,154.1	9.9	231.6	231.8	0.32	0.32	-2.84
5,270.0	0.70	355.80	5,249.1	10.8	231.2	231.5	0.48	0.11	41.79
5,365.0	0.70	355.50	5,344.1	12.0	231.2	231.4	0.00	0.00	-0.32
5,460.0	0.80	11.80	5,439.0	13.2	231.3	231.6	0.25	0.11	17.16
5,555.0	1.00	18.80	5,534.0	14.7	231.7	232.0	0.24	0.21	7.37
5,650.0	0.60	127.90	5,629.0	15.1	232.3	232.7	1.39	-0.42	114.84

Database: edm10p  
Company: Northern Region Drilling  
Project: Wattenberg Field  
Site: C (04N-64W)  
Well: Franklin C08-62HN  
Wellbore: ST#1  
Design: Plan #3

Local Co-ordinate Reference: Well Franklin C08-62HN  
TVD Reference: RIG @ 4811.0ft (Ensign 132 (13' KB))  
MD Reference: RIG @ 4811.0ft (Ensign 132 (13' KB))  
North Reference: Grid  
Survey Calculation Method: Minimum Curvature

Planned Survey

Measured Depth (ft)	Inclination (°)	Azimuth (°)	Vertical Depth (ft)	+N/-S (ft)	+E/-W (ft)	Vertical Section (ft)	Dogleg Rate (°/100ft)	Build Rate (°/100ft)	Turn Rate (°/100ft)
5,745.0	0.60	151.90	5,724.0	14.4	232.9	233.3	0.26	0.00	25.26
5,840.0	0.50	103.00	5,819.0	13.9	233.6	233.9	0.49	-0.11	-51.47
5,935.0	0.70	152.10	5,914.0	13.3	234.3	234.6	0.56	0.21	51.68
5,962.0	0.70	141.60	5,941.0	13.0	234.4	234.7	0.47	0.00	-38.89
5,994.0	0.80	147.30	5,973.0	12.6	234.7	235.0	0.39	0.31	17.81
6,026.0	1.60	110.30	6,005.0	12.3	235.2	235.5	3.36	2.50	-115.62
6,058.0	3.60	93.60	6,037.0	12.1	236.6	236.9	6.62	6.25	-52.19
6,089.0	6.00	84.30	6,067.9	12.2	239.2	239.5	8.11	7.74	-30.00
6,121.0	8.40	86.10	6,099.6	12.5	243.2	243.5	7.53	7.50	5.62
6,153.0	10.10	85.90	6,131.2	12.9	248.3	248.6	5.31	5.31	-0.62
6,185.0	12.30	84.50	6,162.6	13.4	254.5	254.8	6.93	6.87	-4.37
6,216.0	14.30	84.00	6,192.7	14.1	261.6	262.0	6.46	6.45	-1.61
6,248.0	15.90	84.90	6,223.6	14.9	269.9	270.3	5.05	5.00	2.81
6,280.0	17.30	87.50	6,254.3	15.5	279.1	279.4	4.95	4.37	8.12
6,311.0	19.30	88.00	6,283.7	15.9	288.8	289.1	6.47	6.45	1.61
6,343.0	21.50	89.80	6,313.7	16.1	299.9	300.3	7.15	6.87	5.62
6,375.0	23.40	89.20	6,343.3	16.2	312.1	312.5	5.98	5.94	-1.87
6,407.0	24.90	88.20	6,372.5	16.5	325.2	325.6	4.86	4.69	-3.12
6,438.0	27.10	88.50	6,400.4	16.9	338.8	339.2	7.11	7.10	0.97
6,470.0	28.70	88.70	6,428.6	17.3	353.8	354.2	5.01	5.00	0.62
6,502.0	31.50	87.70	6,456.3	17.8	369.8	370.2	8.89	8.75	-3.12
6,533.0	32.70	88.40	6,482.6	18.3	386.3	386.7	4.05	3.87	2.26
6,565.0	35.10	89.60	6,509.1	18.6	404.1	404.5	7.79	7.50	3.75
6,597.0	37.00	90.80	6,535.0	18.6	423.0	423.3	6.33	5.94	3.75
6,628.0	39.70	90.10	6,559.3	18.4	442.2	442.6	8.82	8.71	-2.26
6,660.0	42.90	88.70	6,583.4	18.6	463.3	463.7	10.41	10.00	-4.37
6,692.0	44.90	89.10	6,606.4	19.1	485.5	485.9	6.31	6.25	1.25
6,723.0	47.50	88.40	6,627.9	19.6	507.9	508.2	8.54	8.39	-2.26
6,755.0	48.50	90.00	6,649.3	19.9	531.6	532.0	4.85	3.12	5.00
6,787.0	51.10	89.80	6,669.9	19.9	556.1	556.4	8.14	8.12	-0.62
6,813.0	52.73	88.74	6,686.0	20.2	576.6	576.9	7.02	6.25	-4.08
Sharon Springs									
6,819.0	53.10	88.50	6,689.6	20.3	581.3	581.7	7.02	6.27	-3.97
6,850.0	55.90	88.20	6,707.6	21.0	606.5	606.9	9.07	9.03	-0.97
6,859.8	56.85	87.92	6,713.0	21.3	614.7	615.0	9.97	9.68	-2.88
Top Niobrara									
6,882.0	59.00	87.30	6,724.8	22.1	633.5	633.9	9.97	9.69	-2.78
6,890.2	59.50	87.25	6,729.0	22.4	640.5	640.9	6.15	6.13	-0.65
Niobrara A									
6,913.0	60.90	87.10	6,740.3	23.4	660.3	660.7	6.15	6.13	-0.64
6,945.0	63.80	87.80	6,755.2	24.7	688.6	689.0	9.27	9.06	2.19
6,977.0	66.60	88.90	6,768.6	25.5	717.6	718.1	9.29	8.75	3.44
7,000.0	66.61	90.90	6,777.7	25.5	738.8	739.2	8.00	0.06	8.72
7,007.0	66.62	91.51	6,780.5	25.4	745.2	745.6	8.00	0.13	8.71
7,050.0	66.67	95.26	6,797.6	23.1	784.6	784.9	8.00	0.10	8.71
7,078.9	66.75	97.78	6,809.0	20.1	811.0	811.2	8.00	0.28	8.70
Niobrara B									
7,100.0	66.83	99.61	6,817.3	17.1	830.1	830.2	8.00	0.40	8.69
7,107.0	66.86	100.22	6,820.1	16.0	836.5	836.5	8.00	0.46	8.69
7,200.0	71.11	100.22	6,853.4	0.6	921.9	921.4	4.56	4.56	0.00
7,250.0	73.39	100.22	6,868.7	-7.8	968.7	967.9	4.56	4.56	0.00
7,300.0	76.25	97.80	6,881.7	-15.4	1,016.4	1,015.3	7.39	5.73	-4.83
7,337.7	78.43	96.02	6,890.0	-19.8	1,052.9	1,051.6	7.39	5.77	-4.73

Noble Energy Inc  
Planning Report



Database: edm10p  
Company: Northern Region Drilling  
Project: Wattenberg Field  
Site: C (04N-64W)  
Well: Franklin C08-62HN  
Wellbore: ST#1  
Design: Plan #3

Local Co-ordinate Reference: Well Franklin C08-62HN  
TVD Reference: RIG @ 4811.0ft (Ensign 132 (13' KB))  
MD Reference: RIG @ 4811.0ft (Ensign 132 (13' KB))  
North Reference: Grid  
Survey Calculation Method: Minimum Curvature

Planned Survey

Measured Depth (ft)	Inclination (°)	Azimuth (°)	Vertical Depth (ft)	+N/-S (ft)	+E/-W (ft)	Vertical Section (ft)	Dogleg Rate (°/100ft)	Build Rate (°/100ft)	Turn Rate (°/100ft)
Niobrara C									
7,350.0	79.14	95.44	6,892.4	-21.0	1,064.9	1,063.6	7.39	5.79	-4.68
7,400.0	82.05	93.13	6,900.6	-24.7	1,114.1	1,112.7	7.39	5.81	-4.63
7,450.0	84.96	90.85	6,906.2	-26.4	1,163.7	1,162.2	7.39	5.84	-4.56
7,500.0	87.89	88.59	6,909.3	-26.2	1,213.6	1,212.1	7.39	5.85	-4.52
7,536.0	90.00	86.97	6,910.0	-24.8	1,249.6	1,248.1	7.39	5.86	-4.50
7,600.0	90.00	86.97	6,910.0	-21.4	1,313.5	1,312.1	0.00	0.00	0.00
7,700.0	90.00	86.97	6,910.0	-16.1	1,413.3	1,412.0	0.00	0.00	0.00
7,800.0	90.00	86.97	6,910.0	-10.8	1,513.2	1,512.0	0.00	0.00	0.00
7,900.0	90.00	86.97	6,910.0	-5.5	1,613.1	1,612.0	0.00	0.00	0.00
8,000.0	90.00	86.97	6,910.0	-0.2	1,712.9	1,712.0	0.00	0.00	0.00
8,100.0	90.00	86.97	6,910.0	5.0	1,812.8	1,812.0	0.00	0.00	0.00
8,200.0	90.00	86.97	6,910.0	10.3	1,912.6	1,911.9	0.00	0.00	0.00
8,300.0	90.00	86.97	6,910.0	15.6	2,012.5	2,011.9	0.00	0.00	0.00
8,400.0	90.00	86.97	6,910.0	20.9	2,112.4	2,111.9	0.00	0.00	0.00
8,500.0	90.00	86.97	6,910.0	26.2	2,212.2	2,211.9	0.00	0.00	0.00
8,600.0	90.00	86.97	6,910.0	31.5	2,312.1	2,311.9	0.00	0.00	0.00
8,700.0	90.00	86.97	6,910.0	36.8	2,412.0	2,411.8	0.00	0.00	0.00
8,800.0	90.00	86.97	6,910.0	42.0	2,511.8	2,511.8	0.00	0.00	0.00
8,900.0	90.00	86.97	6,910.0	47.3	2,611.7	2,611.8	0.00	0.00	0.00
9,000.0	90.00	86.97	6,910.0	52.6	2,711.5	2,711.8	0.00	0.00	0.00
9,100.0	90.00	86.97	6,910.0	57.9	2,811.4	2,811.8	0.00	0.00	0.00
9,200.0	90.00	86.97	6,910.0	63.2	2,911.3	2,911.7	0.00	0.00	0.00
9,290.8	90.00	86.97	6,910.0	68.0	3,001.9	3,002.5	0.00	0.00	0.00
9,300.0	90.28	86.97	6,910.0	68.5	3,011.1	3,011.7	3.00	3.00	0.00
9,315.1	90.73	86.97	6,909.8	69.3	3,026.2	3,026.9	3.00	3.00	0.00
9,400.0	90.73	86.96	6,908.8	73.8	3,111.0	3,111.7	0.01	0.00	-0.01
9,500.0	90.73	86.95	6,907.5	79.1	3,210.8	3,211.7	0.01	0.00	-0.01
9,600.0	90.73	86.94	6,906.2	84.4	3,310.7	3,311.6	0.01	0.00	-0.01
9,700.0	90.73	86.93	6,904.9	89.8	3,410.5	3,411.6	0.01	0.00	-0.01
9,800.0	90.74	86.91	6,903.6	95.1	3,510.4	3,511.6	0.01	0.00	-0.01
9,900.0	90.74	86.90	6,902.4	100.5	3,610.2	3,611.6	0.01	0.00	-0.01
10,000.0	90.74	86.89	6,901.1	105.9	3,710.1	3,711.5	0.01	0.00	-0.01
10,100.0	90.74	86.88	6,899.8	111.4	3,809.9	3,811.5	0.01	0.00	-0.01
10,200.0	90.74	86.87	6,898.5	116.8	3,909.7	3,911.5	0.01	0.00	-0.01
10,300.0	90.74	86.86	6,897.2	122.3	4,009.6	4,011.4	0.01	0.00	-0.01
10,400.0	90.74	86.84	6,895.9	127.8	4,109.4	4,111.4	0.01	0.00	-0.01
10,500.0	90.74	86.83	6,894.6	133.3	4,209.3	4,211.4	0.01	0.00	-0.01
10,600.0	90.75	86.82	6,893.3	138.9	4,309.1	4,311.3	0.01	0.00	-0.01
10,700.0	90.75	86.81	6,892.0	144.4	4,408.9	4,411.3	0.01	0.00	-0.01
10,776.5	90.75	86.80	6,891.0	148.7	4,485.3	4,487.8	0.01	0.00	-0.01

Database: edm10p  
Company: Northern Region Drilling  
Project: Wattenberg Field  
Site: C (04N-64W)  
Well: Franklin C08-62HN  
Wellbore: ST#1  
Design: Plan #3

Local Co-ordinate Reference: Well Franklin C08-62HN  
TVD Reference: RIG @ 4811.0ft (Ensign 132 (13' KB))  
MD Reference: RIG @ 4811.0ft (Ensign 132 (13' KB))  
North Reference: Grid  
Survey Calculation Method: Minimum Curvature

#### Targets

Target Name	Dip Angle (°)	Dip Dir. (°)	TVD (ft)	+N/-S (ft)	+E/-W (ft)	Northing (ft)	Easting (ft)	Latitude	Longitude
- hit/miss target									
- Shape									
Franklin C08-62ST R	0.00	0.00	6,891.0	148.7	4,485.3	1,361,255.81	3,259,491.75	40° 19' 16.716 N	104° 34' 9.660 W
- plan hits target									
- Point									
Franklin C08-62ST P	0.00	0.00	6,877.0	185.0	4,486.0	1,361,292.13	3,259,492.43	40° 19' 17.075 N	104° 34' 9.646 W
- plan misses by 38.9ft at 10776.5ft MD (6891.0 TVD, 148.7 N, 4485.3 E)									
- Circle (radius 50.0)									

#### Formations

Measured Depth (ft)	Vertical Depth (ft)	Name	Lithology	Dip (°)	Dip Direction (°)
7,078.9	6,809.0	Niobrara B		0.00	
7,337.7	6,890.0	Niobrara C		0.00	
6,813.0	6,686.0	Sharon Springs		0.00	
6,890.2	6,729.0	Niobrara A		0.00	
6,859.8	6,713.0	Top Niobrara		0.00	

#### Plan Annotations

Measured Depth (ft)	Vertical Depth (ft)	Local Coordinates		Comment
		+N/-S (ft)	+E/-W (ft)	
6,977.0	6,768.6	25.5	717.6	KOP for Sidetrack