

# BURLINGTON RESOURCES OIL & GAS COMPANY LP

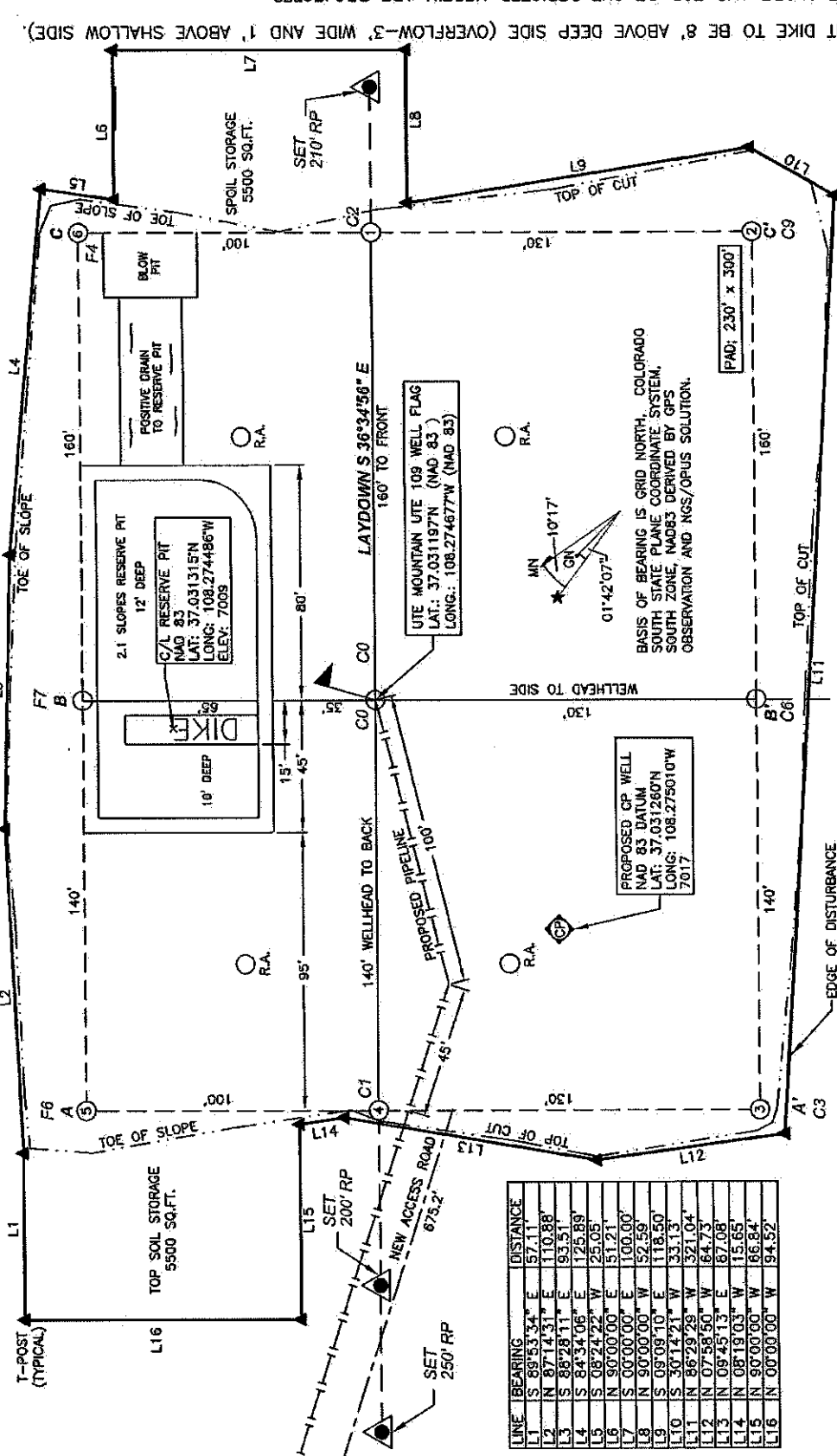
UTE MOUNTAIN UTE 109 - 2300' FSL, 2000' FEL

SECTION 11, T-32-N, R-13-W, N.M.P.M., LA PLATA COUNTY, COLORADO

ELEV.: 7013 NAVD88 DATE: MARCH 17, 2011

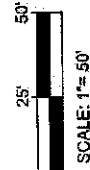
NEW ACCESS 675.2'

PAD LAYOUT



LINE	BEARING	DISTANCE
L1	S 89°53'34" E	57.11'
L2	N 87°14'31" E	110.88'
L3	S 88°28'11" E	93.51'
L4	S 84°34'06" E	125.89'
L5	S 08°24'22" W	25.05'
L6	N 90°00'00" E	51.21'
L7	S 00°00'00" E	100.00'
L8	N 90°00'00" W	52.59'
L9	S 09°08'10" E	118.50'
L10	S 30°14'21" W	33.13'
L11	N 86°29'29" W	321.04'
L12	N 07°58'50" W	164.73'
L13	N 09°45'13" E	187.08'
L14	N 08°19'03" W	115.65'
L15	N 90°00'00" W	166.84'
L16	N 00°00'00" W	94.52'

NOTES:



LEVEL PAD AREA = 1.58 ACRES  
PAD & E.O.D.(INCLUDES STORAGE AREAS) = 2.28 ACRES  
STORAGE AREAS (TOP SOIL & SPOIL) = .25 ACRES  
TOTAL NEW DISTURBANCE AREA = 2.28 ACRES  
▲ = SET T-POST

SET 200' RP

P.O. BOX 328  
BLOOMFIELD, NM, 87413  
PHONE: (505)325-7707

**CCI**  
CHENAULT CONSULTING INC.

1. RESERVE PIT DIKE TO BE 8' ABOVE DEEP SIDE (OVERFLOW-3' WIDE AND 1' ABOVE SHALLOW SIDE).
2. THE TOE OF SLOPE AND TOP OF CUT DEPICTED HEREIN ARE PROJECTED.
3. C.C.I. SURVEYS IS NOT LIABLE FOR UNDERGROUND UTILITIES OR PIPELINES. CONTRACTOR SHOULD NOTIFY ONE-CALL FOR LOCATION OF ANY MARKED OR UNMARKED BURIED PIPELINES OR CABLES ON WELL PAD AND OR ACCESS ROAD AT LEAST TWO (2) WORKING DAYS PRIOR TO CONSTRUCTION.