

# BURLINGTON RESOURCES OIL & GAS COMPANY LP

UTE MOUNTAIN UTE 109 - 2300' FSL, 2000' FEL

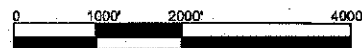
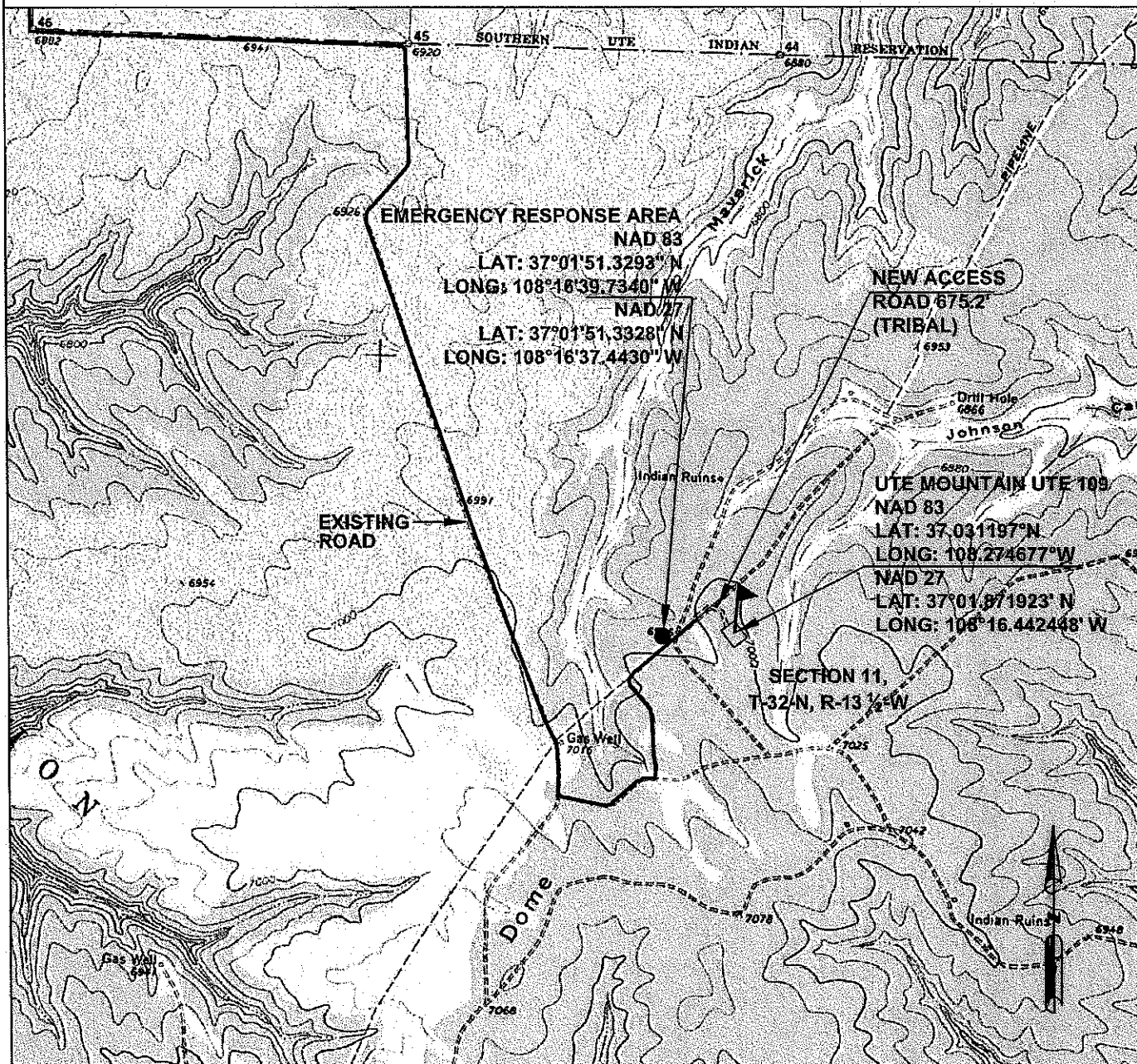
SECTION 11, T-32-N, R-13 ½-W, N.M.P.M.,

LA PLATA COUNTY, COLORADO

ELEV.: 7013 NAVD88

NEW ACCESS 675.2'

TOPOGRAPHY



NOTE: .

REVISIONS			
NO.	DESCRIPTION	REVISED BY	DATE
1	ISSUED FOR REVIEW	TJR	3/17/11

**CCI**

P.O. BOX 328  
BLOOMFIELD, NM, 87413  
PHONE: (505) 325-7707

**CHENAULT CONSULTING INC.**