

BURLINGTON RESOURCES OIL & GAS COMPANY LP

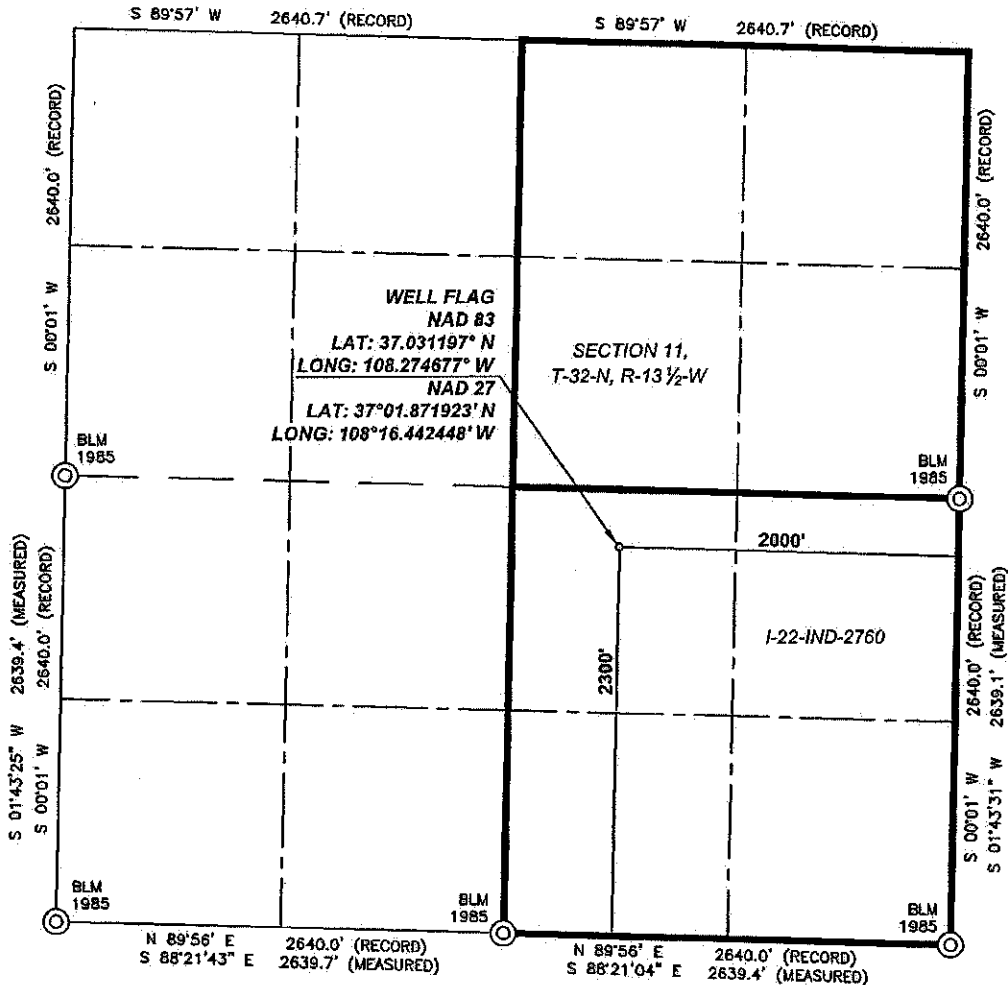
UTE MOUNTAIN UTE 109

2300' FSL, 2000' FEL

SECTION 11, T-32-N, R-13½-W, N.M.P.M.,

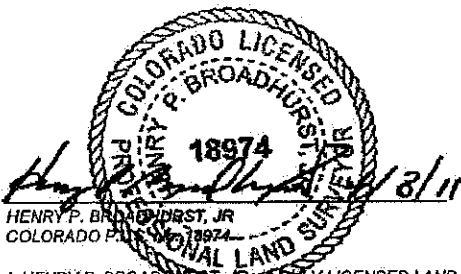
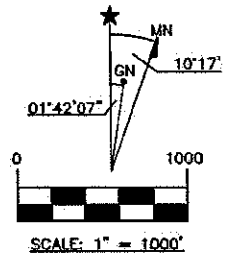
LA PLATA COUNTY, COLORADO

GROUND LEVEL ELEVATION: 7013



NOTES:

1. BASIS OF BEARING IS GRID NORTH, COLORADO STATE PLANE COORDINATE SYSTEM, SOUTH ZONE, NAD83, DERIVED BY GPS OBSERVATION AND NGS/OPUS SOLUTION WITH ALL LINEWORK DEPICTED HEREIN RELATIVE THERETO.
2. BASIS OF ELEVATION IS 7013' AT THE WELL FLAG, NAVD88, DERIVED BY GPS OBSERVATION AND NGS/OPUS SOLUTION.
3. COMBINED FACTOR AT THE WELL FLAG IS 0.999710610
4. THE BLM DEPENDENT RESURVEY AND SURVEY OF T32N, R13½W, NMPM APPROVED APRIL 7, 1987 WAS RELIED UPON FOR RECORD INFORMATION.
5. FIELD SURVEYING COMMENCED MARCH 17, 2011.
6. GPS FIELD SURVEYING MEETS THE REQUIREMENTS OF RULE 215, ITEMS "A" THROUGH "H" AS SET FORTH IN THE AMENDED RULES AND REGULATIONS OF THE COLORADO OIL AND GAS CONSERVATION COMMISSION, EFFECTIVE MAY 1 2009.



I, HENRY P. BROADHURST, JR., A FULLY LICENSED LAND SURVEYOR IN THE STATE OF COLORADO, DO HEREBY CERTIFY THAT THE WELL LOCATION SHOWN ON THIS PLAT WAS PLOTTED FROM FIELD NOTES OF ACTUAL SURVEYS MADE BY ME OR UNDER MY SUPERVISION, AND THAT THE SAME IS TRUE AND CORRECT TO THE BEST OF MY BELIEF.

PREPARED FOR:
**BURLINGTON RESOURCES
OIL & GAS COMPANY LP**

CCI
CHENAULT CONSULTING INC.

PO BOX 328
BLOOMFIELD, NM 87413
(505) 325-7707