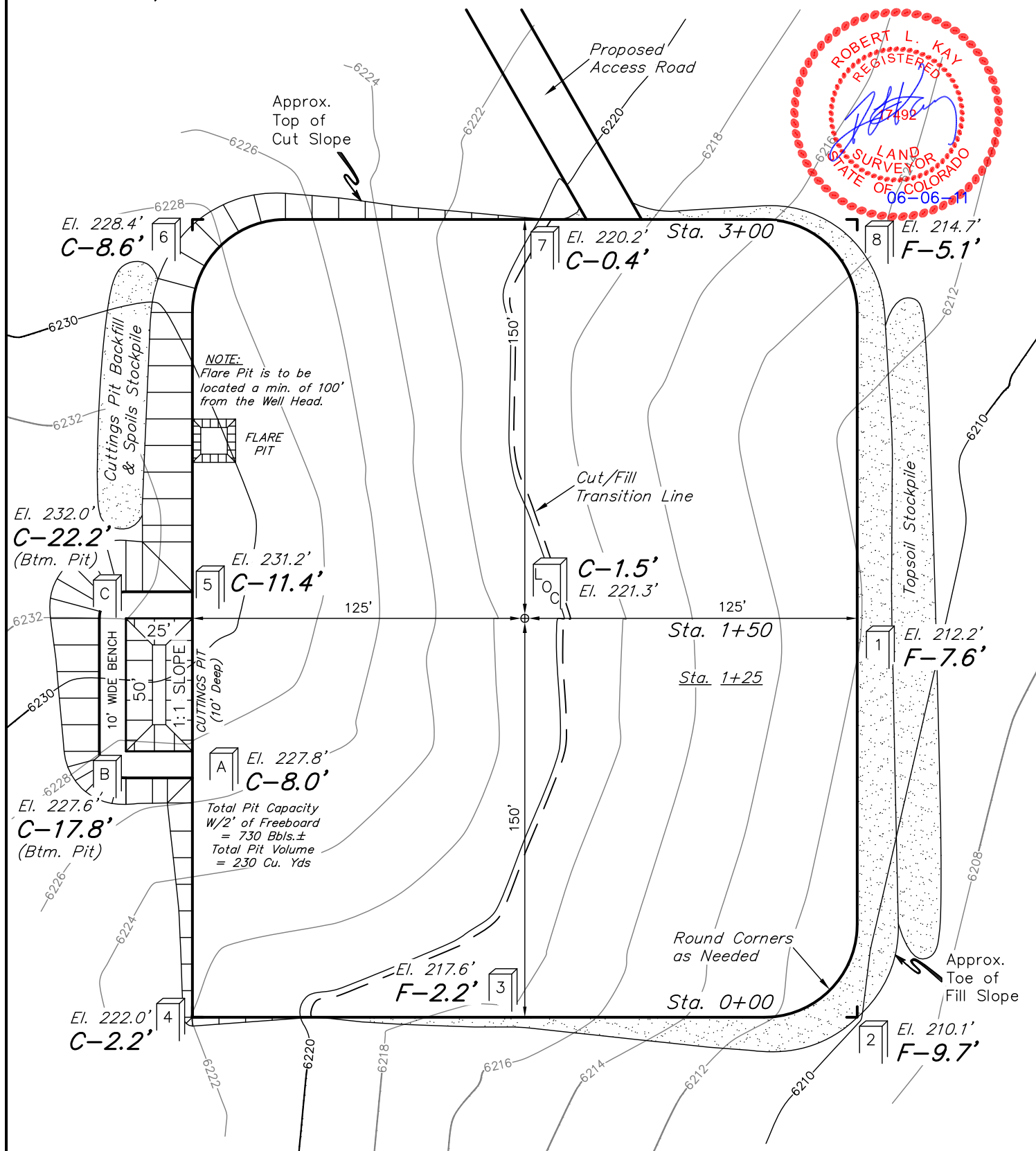


FIGURE #1

SCALE: 1" = 50'
DATE: 06-06-11
DRAWN BY: M.D.



Elev. Ungraded Ground At Loc. Stake = 6221.3'
FINISHED GRADE ELEV. AT LOC. STAKE = 6219.8'

UINTAH ENGINEERING & LAND SURVEYING
85 So. 200 East * Vernal, Utah 84078 * (435) 789-1017

QUICKSILVER RESOURCES, INC.

FIGURE #2

CONSTRUCTION LAYOUT CROSS SECTIONS FOR

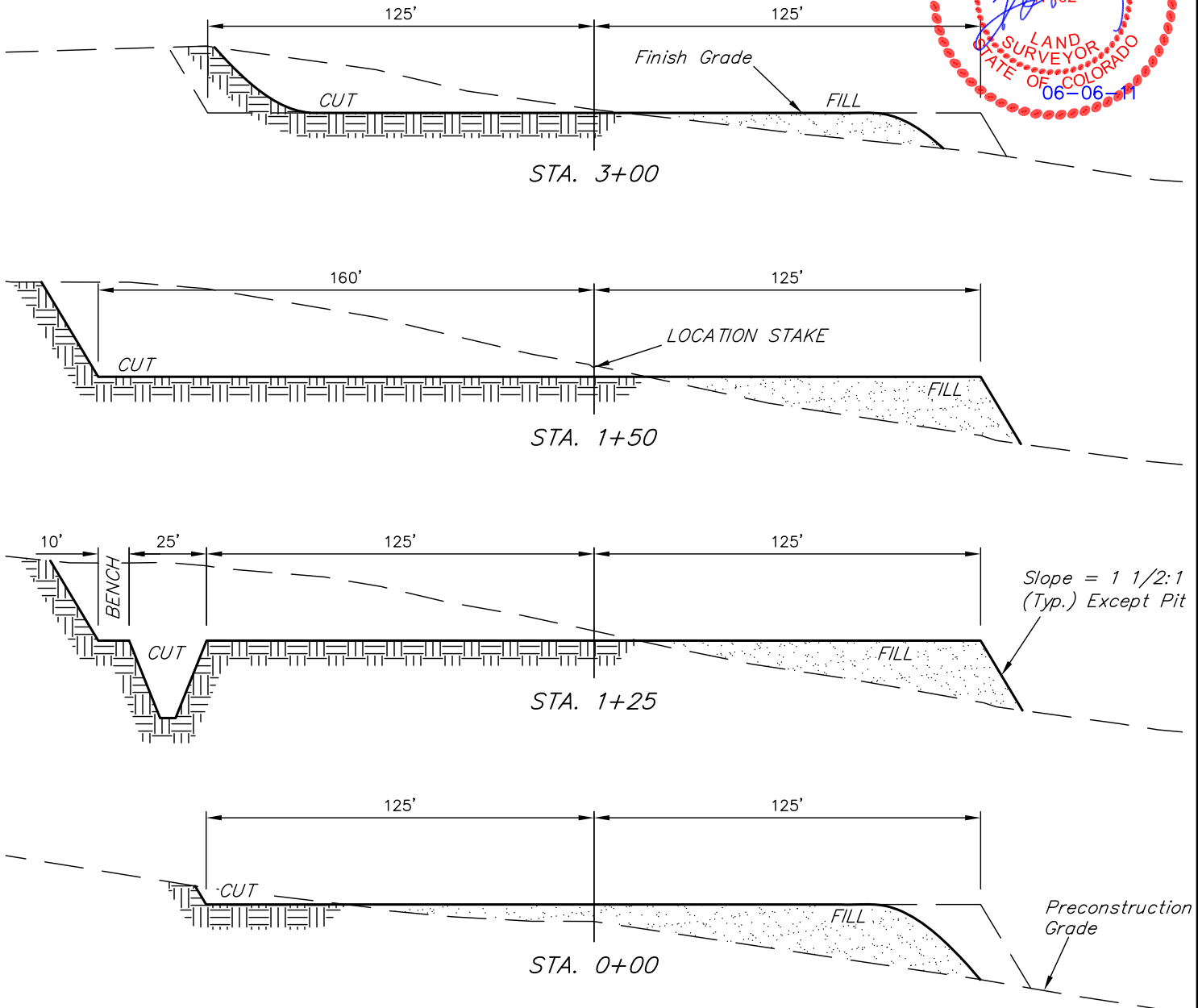
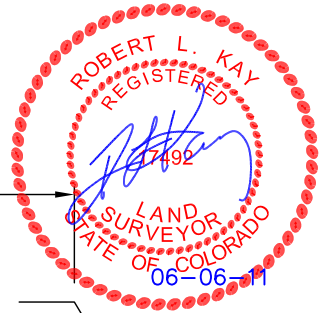
K-DIAMOND RANCH #44-20

SECTION 20, T6N, R92W, 6th. P.M.

806' FSL 485' FEL

1" = 20'
X-Section Scale
1" = 50'

DATE: 06-06-11
DRAWN BY: M.D.



NOTE:

Topsoil should not be Stripped Below Finished Grade on Substructure Area.

APPROXIMATE ACREAGES

WELL SITE DISTURBANCE = ± 2.152 ACRES
ACCESS ROAD DISTURBANCE = ± 3.888 ACRES
TOTAL = ± 6.040 ACRES

* NOTE:
FILL QUANTITY INCLUDES 5% FOR COMPACTION

APPROXIMATE YARDAGES

(6") Topsoil Stripping = 1,680 Cu. Yds.
Remaining Location = 7,800 Cu. Yds.
TOTAL CUT = 9,480 CU.YDS.
FILL = 7,680 CU.YDS.

EXCESS MATERIAL = 1,800 Cu. Yds.
Topsoil & Pit Backfill = 1,800 Cu. Yds.
(1/2 Pit Vol.)
EXCESS UNBALANCE = 0 Cu. Yds.
(After Interim Rehabilitation)

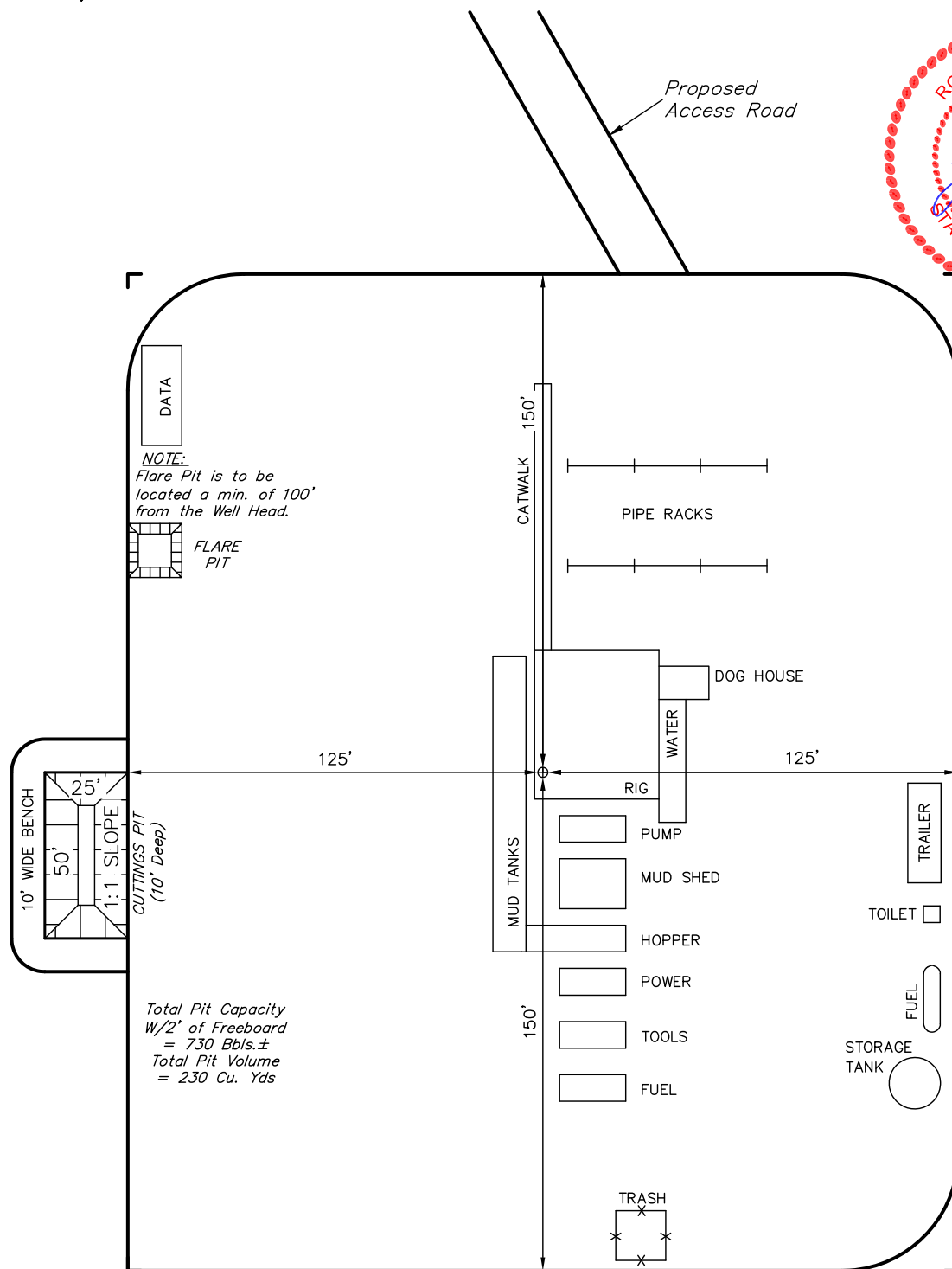
UINTAH ENGINEERING & LAND SURVEYING
85 So. 200 East * Vernal, Utah 84078 * (435) 789-1017

QUICKSILVER RESOURCES, INC.

TYPICAL RIG LAYOUT FOR
K-DIAMOND RANCH #44-20
SECTION 20, T6N, R92W, 6th. P.M.
806' FSL 485' FEL

FIGURE #3

SCALE: 1" = 50'
DATE: 06-06-11
DRAWN BY: M.D.



QUICKSILVER RESOURCES, INC.

RECLAMATION DIAGRAM FOR

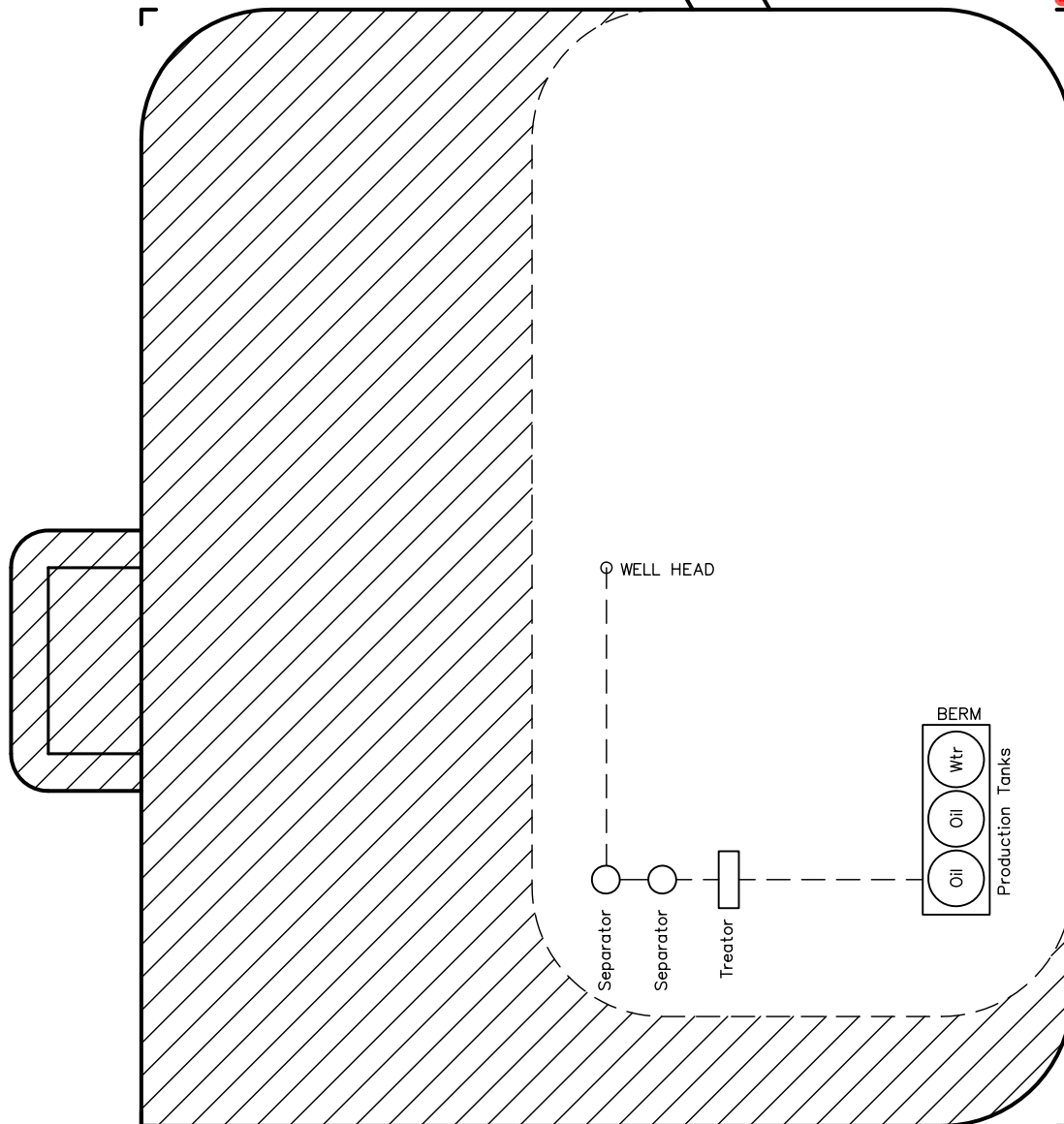
K-DIAMOND RANCH #44-20
SECTION 20, T6N, R92W, 6th. P.M.
806' FSL 485' FEL

FIGURE #4

SCALE: 1" = 50'
DATE: 06-06-11
DRAWN BY: M.D.



Access Road



APPROXIMATE ACREAGES
UN-RECLAIMED = ± 0.890 ACRES



RECLAIMED AREA