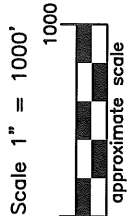
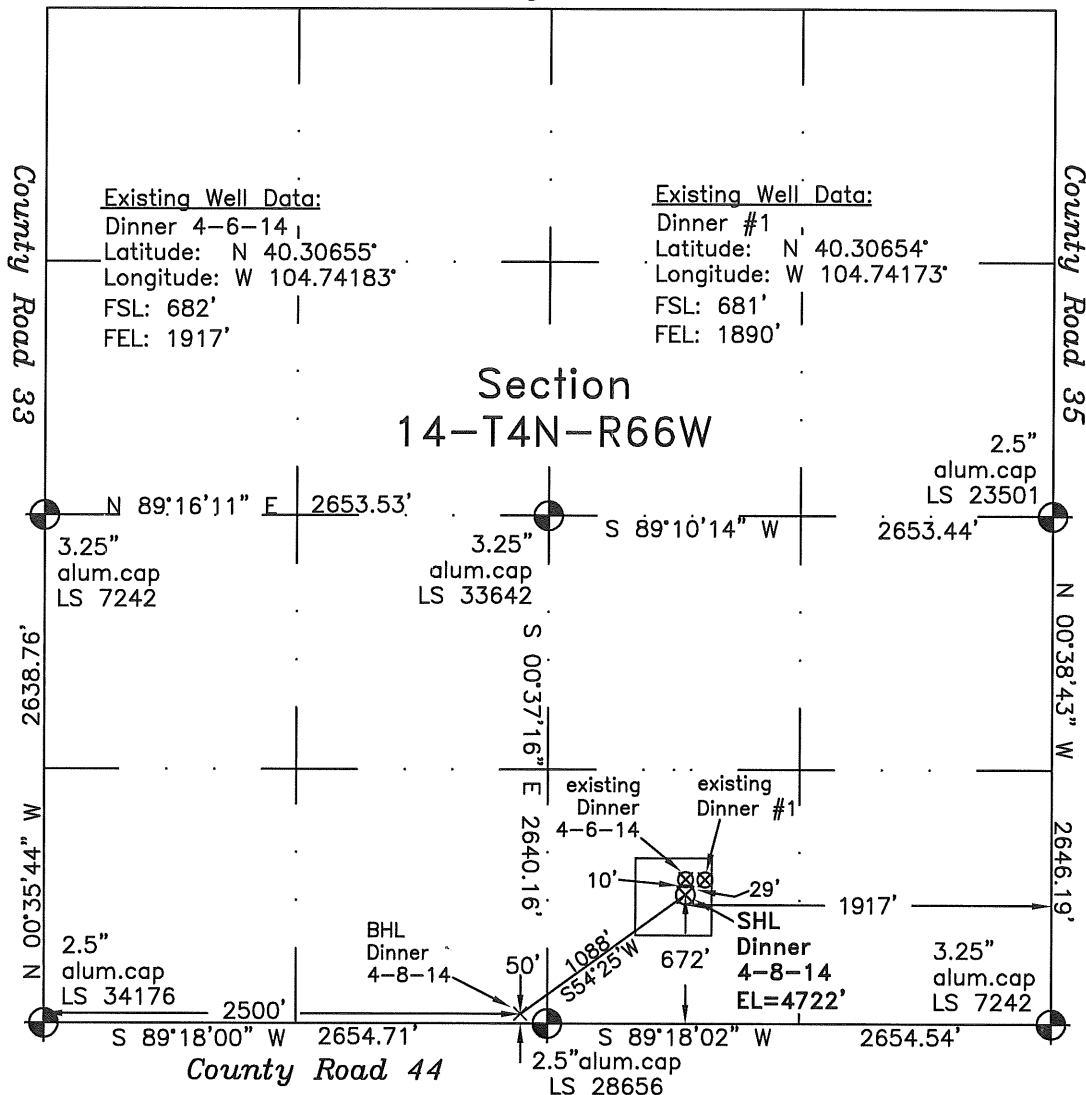


WELL LOCATION CERTIFICATE

THIS MAP DOES NOT REPRESENT A BOUNDARY SURVEY

County Road 46



LEGEND
 - found survey monument
 - calculated dimension
 (c)

In accordance with a request from Dave Bale of EnCana Oil & Gas (USA) Inc., Frederick Land Surveying, Inc. has determined the location of the **Dinner 4-8-14** well site to be SHL: 672' FSL and 1917' FEL, (BHL 50' FSL and 2500' FWL), as measured at ninety (90) degrees from the section lines of Section 14, Township 4 North, Range 66 West of the 6th Principal Meridian, Weld County Colorado.

Proposed Surface Hole Data:

Latitude: N 40.30652° BHL(40.30480°)

Longitude: W 104.74183° BHL(104.74502°)

Nearest: Building 468' southwest

Above Ground Utility 634' south

Public Road 669' south

Railroad 1300' northwest

Property Line 672' south

PDOP: 1.3

Notes:

- 1) Bearings and distances based on NAD 83 Colorado North State Plane Coordinates using RTK GPS observations taken 5/17/10 by operator Tom Winans.
- 2) Conversion factor to ground (1.000266715).
- 3) Elevations based on NAVD 88 GPS heights and Geoid 2003 corrections.
- 4) See improvement map for visible improvements within 400 feet of pad site.
- 5) The location falls on agricultural land.

NOTICE: According to Colorado law you must commence any legal action based upon any defect in this W.L.C. within three years after you first discover such defect. In no event may any action based upon any defect in this W.L.C. be commenced more than ten years from this said date of the certification shown hereon.

I hereby certify that this Well Location Certificate was prepared by me or under my direct supervision on 5/19/10 for and on behalf of EnCana Oil & Gas (USA) Inc. and that it is a true and correct copy of the original Survey Plat and that it is not to be relied upon for establishment of fences, buildings, or other future improvement lines.

ALEX RONDA
 Alex Ronda, Professional Land Surveyor
 Job #: 09105.017 5-21-2010