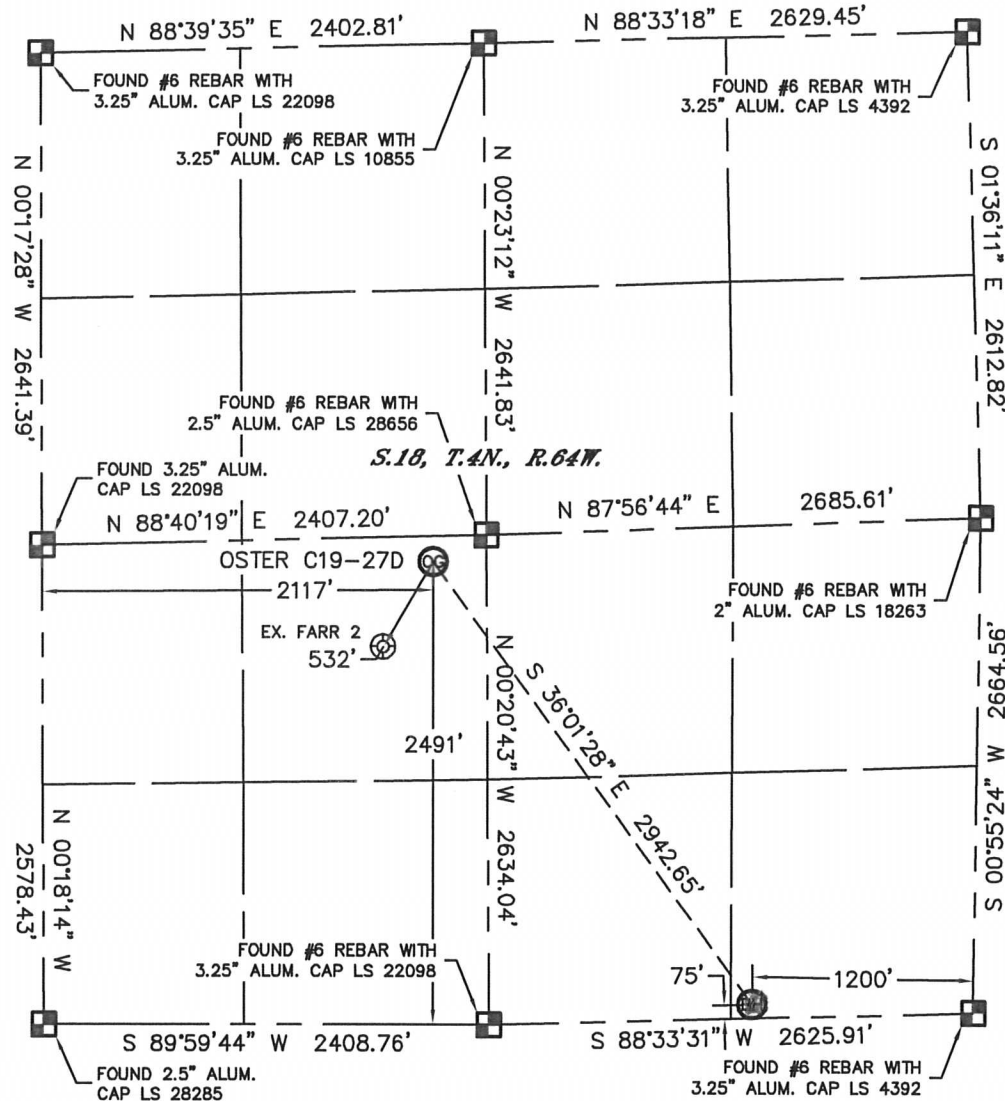


# WELL LOCATION CERTIFICATE

THIS MAP DOES NOT REPRESENT A BOUNDARY SURVEY

SECTION: 18  
TOWNSHIP: 4N  
RANGE: 64W



In accordance with a request from Matt Verbit with Noble Energy Inc. Lat40°, Inc. has determined the surface location of the OSTER C19-27D to be 2491' from the SOUTH line and 2117' from the WEST line and the bottom hole to be 75' from the SOUTH line and 1200' from the EAST line as measured at right angles from the section lines of Section 18, Township 4 North, Range 64 West of the Sixth Principal Meridian, County of Weld, State of Colorado.

I hereby state that this Well Location Certificate was prepared by me, or under my direct supervision, that the fieldwork was completed on 5/10/11, for and on behalf of Noble Energy Inc. That this is not a Land Survey Plat or an Improvement Survey Plat, and that it is not to be relied upon for establishment of fence, building, or other future improvement lines.

## NOTE:

- 1) Bearings shown are Grid Bearings of the Colorado State Plane Coordinate System, North Zone, North American Datum 1983/2007. The lineal dimensions as contained herein are based upon the "U.S. Survey Foot."
- 2) Ground elevations are based on an observed GPS elevation (NAVD 1988 DATUM).
- 3) NEAREST EXISTING WELL: FARR 2, 532'
- 4) IMPROVEMENTS: See LOCATION DRAWING for all visible improvements within 400' of disturbed area.
- 5) SURFACE USE: RANGELAND
- 6) INSTRUMENT OPERATOR: BRIAN BRINKMAN

## SURFACE LOCATION

LATITUDE: 40.31188°N  
LONGITUDE: 104.59451°W  
PDOP: 2.7  
ELEV: 4834'  
1/4, 1/4: NE1/4SW1/4  
NEAREST PROPERTY LINE: 99' SOUTH

## BOTTOM HOLE

LATITUDE: 40.30530°N  
LONGITUDE: 104.58839°W

## NOTE

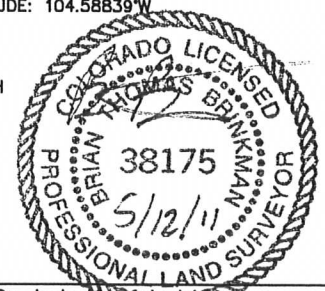
According to Colorado law, you must commence any legal action based upon any defect in this W.L.C. within three years after you discover such defect. In no event, may any action based upon any defect in this survey be commenced more than ten years after the date of the certificate shown hereon. (13-80-105 C.R.S.)

## LEGEND

- = ALIQUOT MONUMENT AS DESCRIBED
- = CALCULATED POSITION

Brian T. Brinkman—On behalf of Lat40°, Inc.  
Colorado Licensed Professional  
Land Surveyor No. 38175

PROJECT#: 2011110

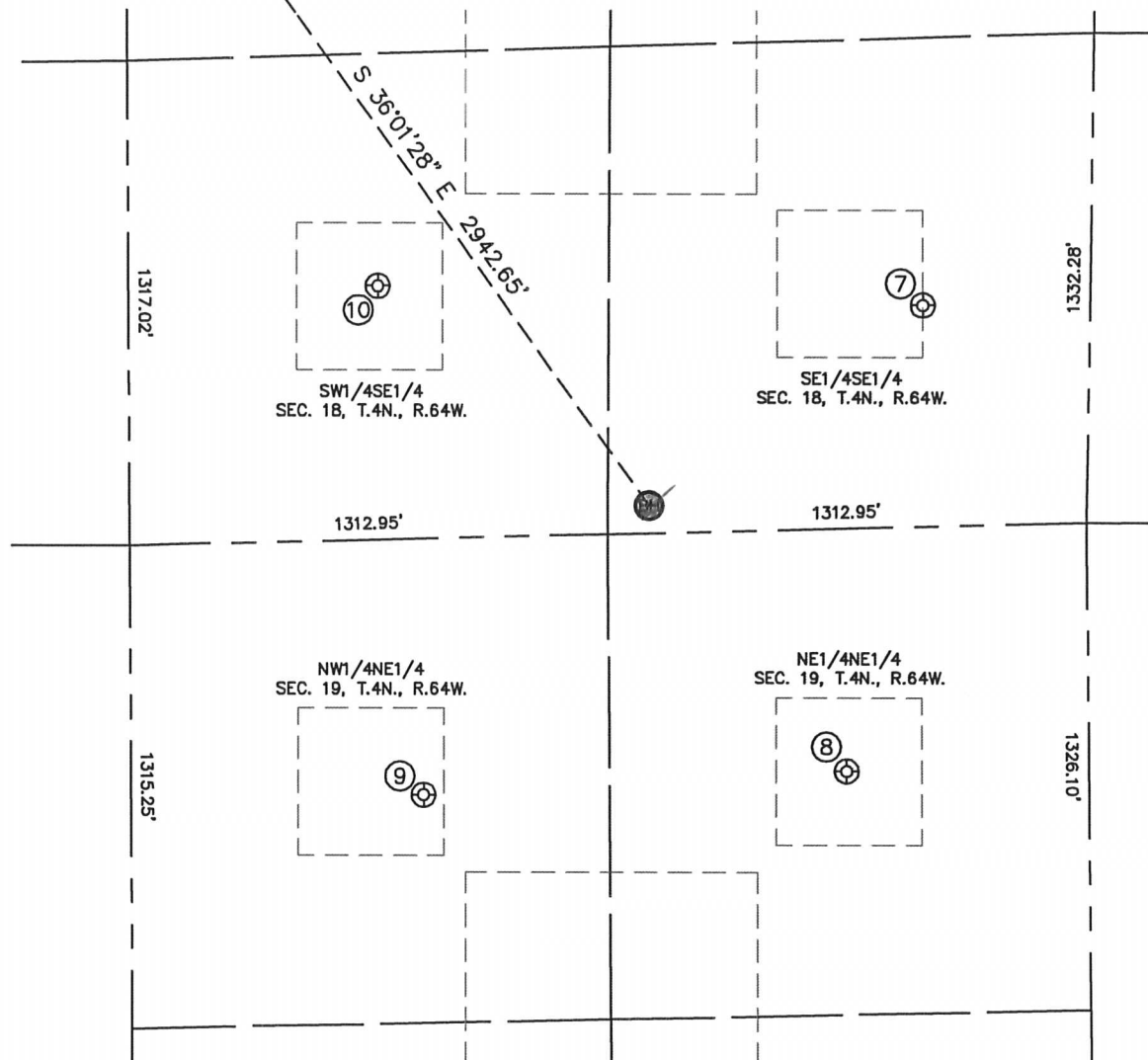


# SITE SKETCH

OSTER C19-27D

SECTION: 18  
TOWNSHIP: 4N  
RANGE: 64W

OSTER C19-27D



⑦

RITER C18-16  
SE1/4SE1/4  
602' FSL  
457' FEL  
LAT-40.30678°N  
LONG-104.58568°W  
PDOP: 2.1  
ELEV: 4769'

⑧

CPC-OSTER 19-01  
NE1/4NE1/4  
661' FNL  
663' FEL  
LAT-40.30330°N  
LONG-104.58648°W  
PDOP: 1.9  
ELEV: 4800'

⑨

MOORE UPRC C19-2  
NW1/4NE1/4  
697' FNL  
1825' FEL  
LAT-40.30315°N  
LONG-104.59065°W  
PDOP: 2.0  
ELEV: 4821'

⑩

SCHNEIDER/DIC/COLTON  
34-18  
SW1/4SE1/4  
689' FSL  
1956' FEL  
LAT-40.30696°N  
LONG-104.59105°W  
PDOP: 2.1  
ELEV: 4802'

