

Company	Pioneer Natural Resources	Company	Pioneer Natural Resources
Well	Alibi 23-2	Well	Alibi 23-2
Field	Purgatoire River	Field	Purgatoire River
County	Las Animas	County	Las Animas
State	Colorado	State	Colorado
Location:	API # : 05 071 09799 00 1451' FSL & 2173' FWL	Other Services	CDL
Permanent Datum	SEC 2 TWP 33S RGE 68W	Elevation	
Log Measured From	Ground Level	Elevation	7932'
Drilling Measured From	Kelly Bushing 9' AGL Kelly Bushing	K.B. 7941' D.F. ----- G.L. 7932'	
Date	5-1-10		
Run Number	Two		
Depth Driller	2565'		
Depth Logger	2566'		
Bottom Logged Interval	2564'		
Top Log Interval	Surface Casing		
Casing Driller	8 5/8" @ 765'		
Casing Logger	764'		
Bit Size	7 7/8"		
Type Fluid in Hole	Airiated Water		
Density / Viscosity	///		
pH / Fluid Loss	///		
Source of Sample	///		
Rm @ Meas. Temp	///		
Rmf @ Meas. Temp	///		
Rmc @ Meas. Temp	///		
Source of Rmf / Rmc	///		
Rm @ BHT	///		
Time Circulation Stopped	5:00 A.M.		
Time Logger on Bottom	10:30 a.m.		
Maximum Recorded Temperature	109 Deg F		
Equipment Number	T045		
Location	Trinidad		
Recorded By	L. Smith		
Witnessed By	Mr. Derrick Berry	Ms. Jackie Luther	

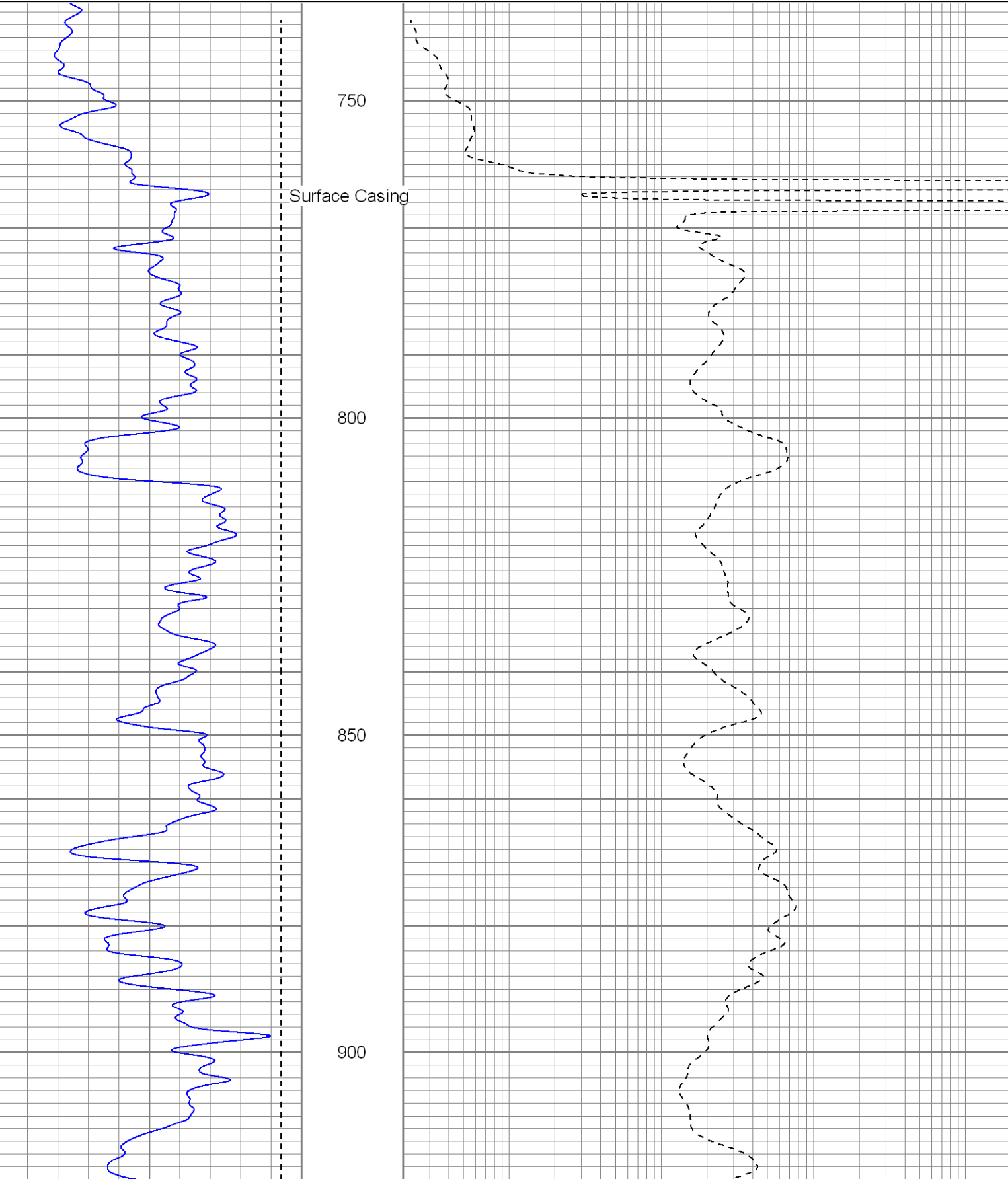
<<< Fold Here >>>

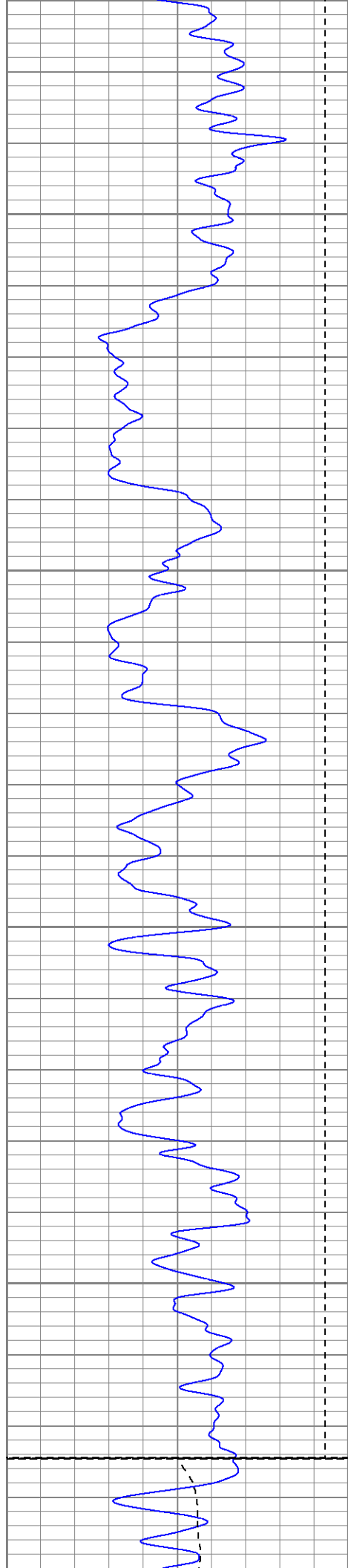
All interpretations are opinions based on inferences from electrical or other measurements and we cannot and do not guarantee the accuracy or correctness of any interpretation, and we shall not, except in the case of gross or willful negligence on our part, be liable or responsible for any loss, costs, damages, or expenses incurred or sustained by anyone resulting from any interpretation made by any of our officers, agents or employees. These interpretations are also subject to our general terms and conditions set out in our current Price Schedule.

Comments

Database File: alibi.db  
Dataset Pathname: pass5.1  
Presentation Format: iel  
Dataset Creation: Sat May 01 12:30:54 2010 by Calc Open-Cased 071220  
Charted by: Depth in Feet scaled 1:240

0	GR (GAPI)	200	0.2	DIR (Ohm-m)	2000
-200	SP (mV)	0	0.2	SN (Ohm-m)	2000





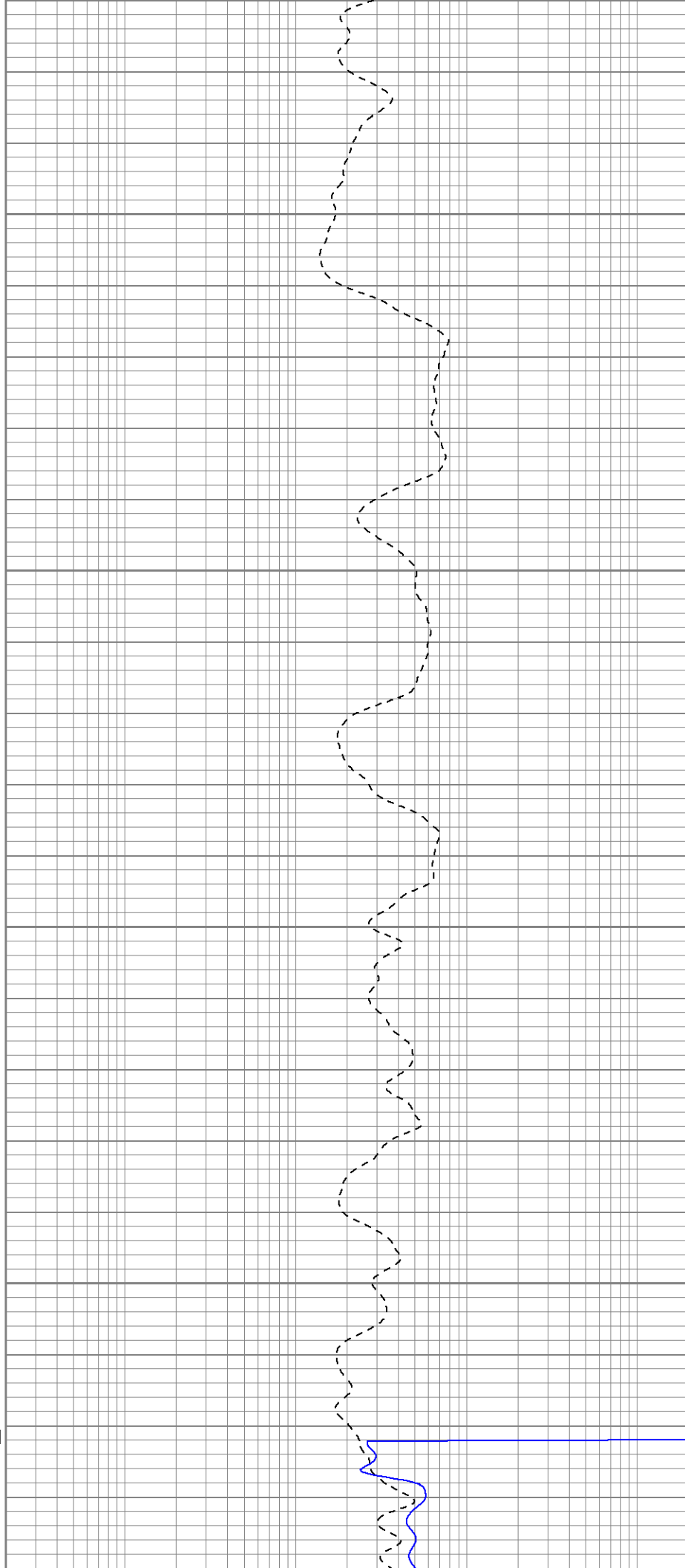
950

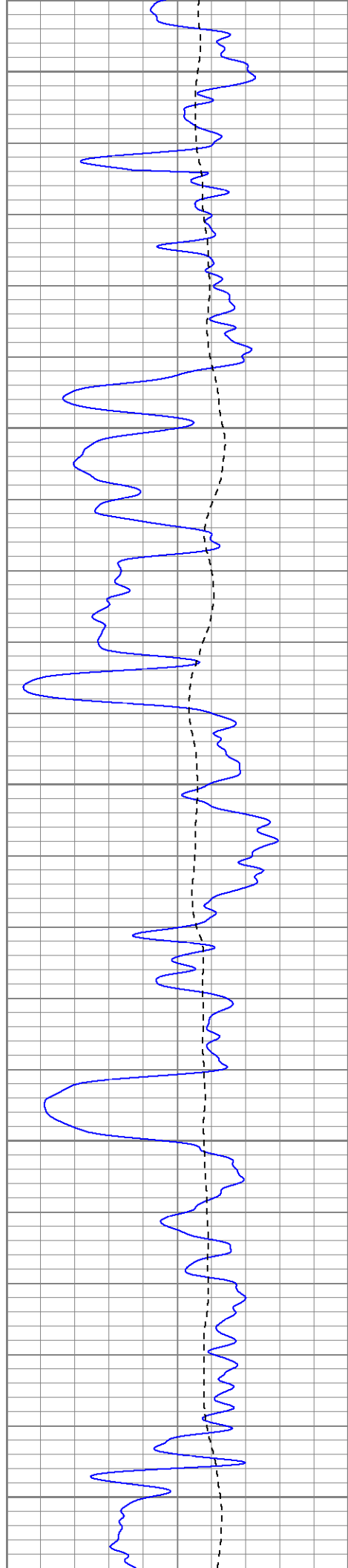
1000

1050

1100

Fluid Level





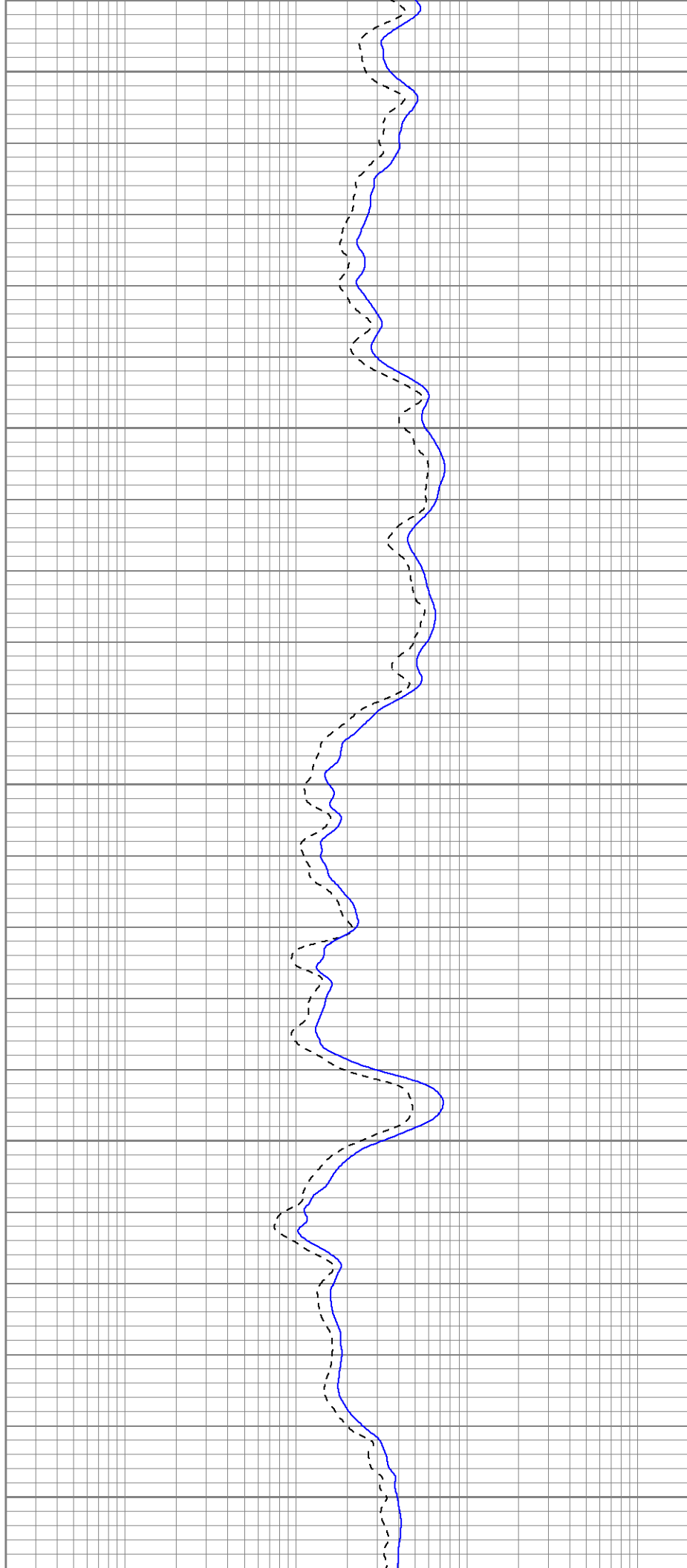
1150

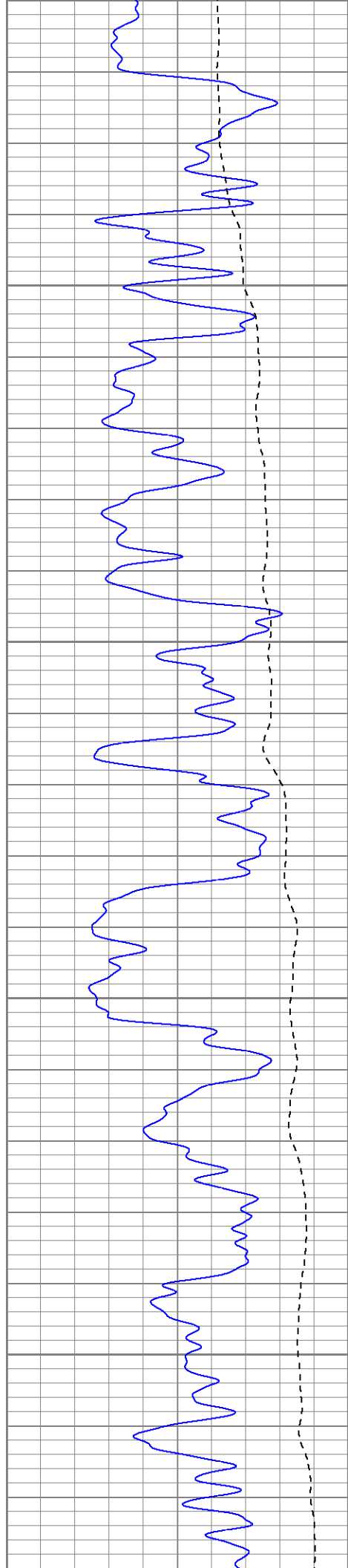
1200

1250

1300

1350



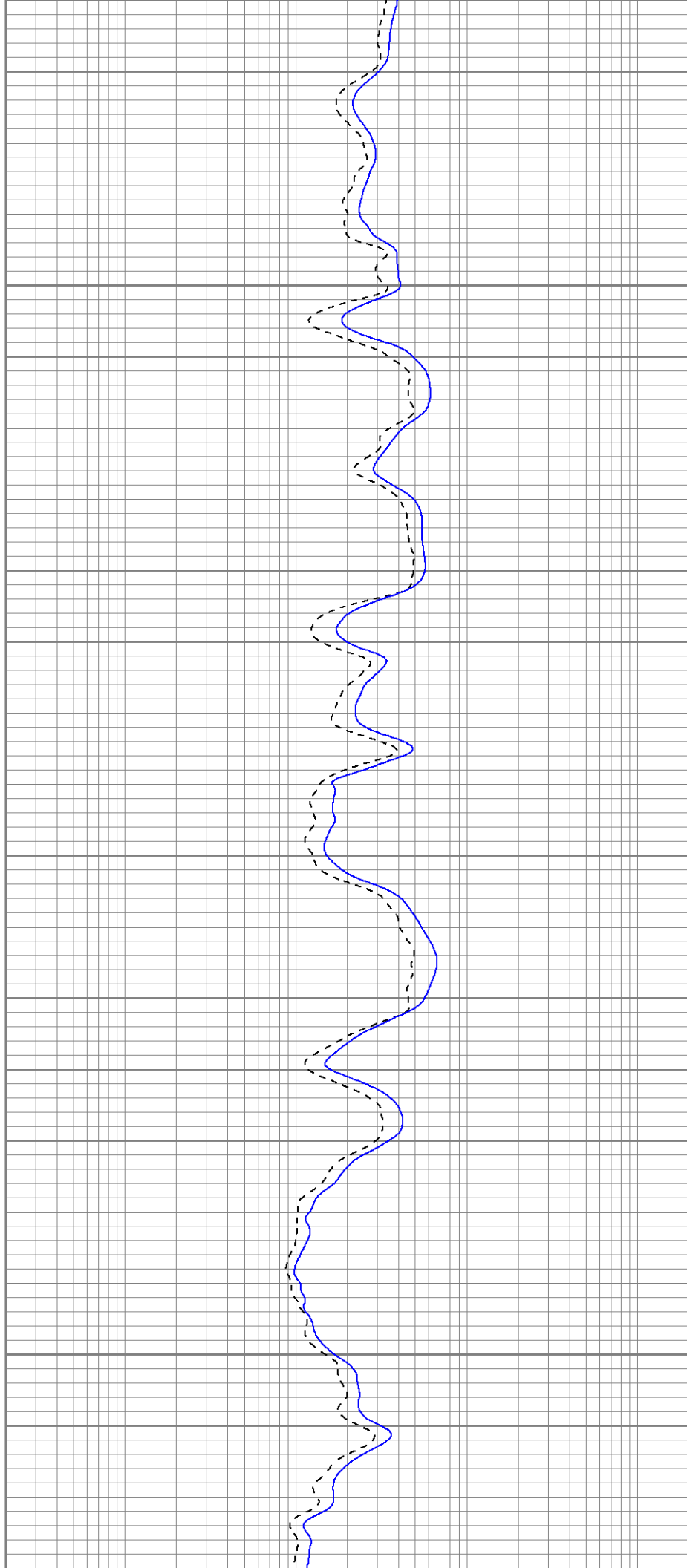


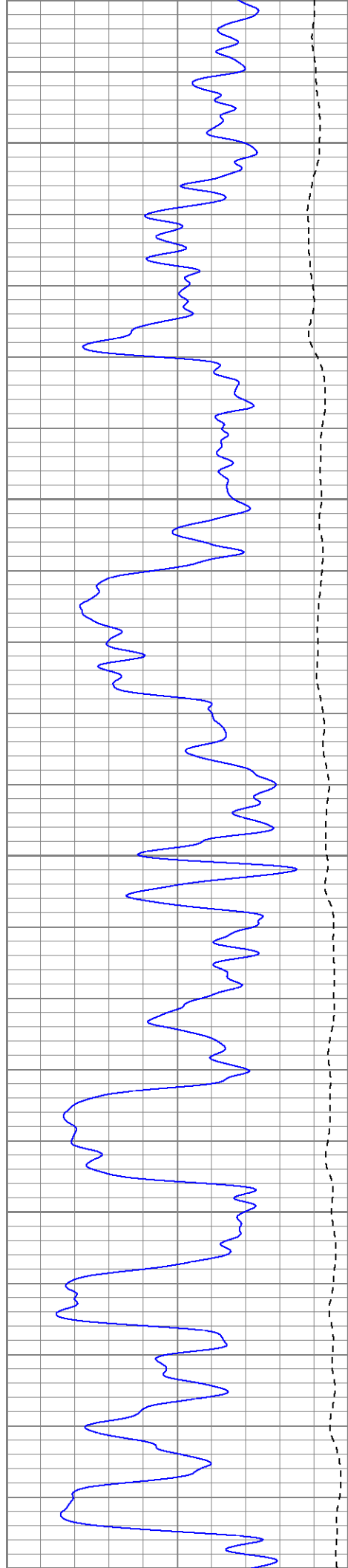
1400

1450

1500

1550





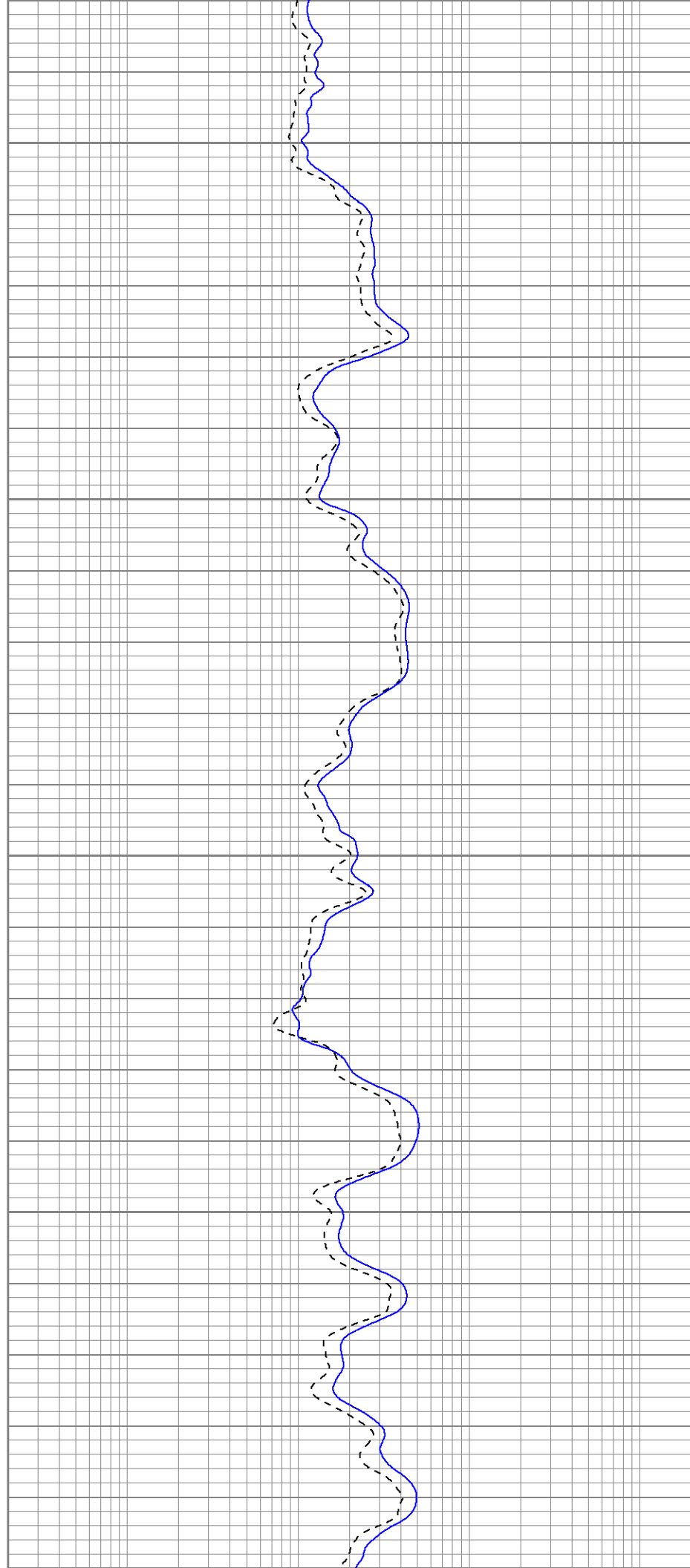
1600

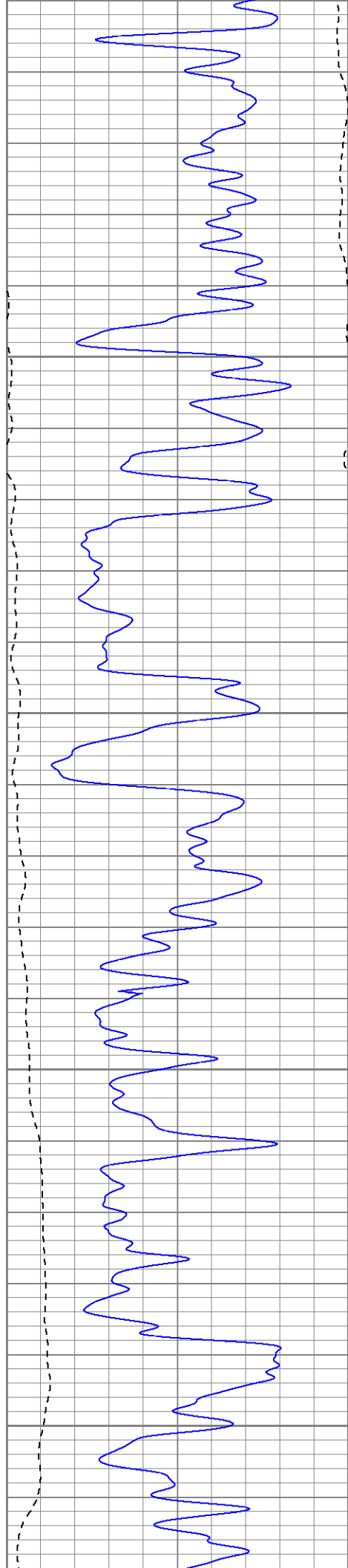
1650

1700

1750

1800





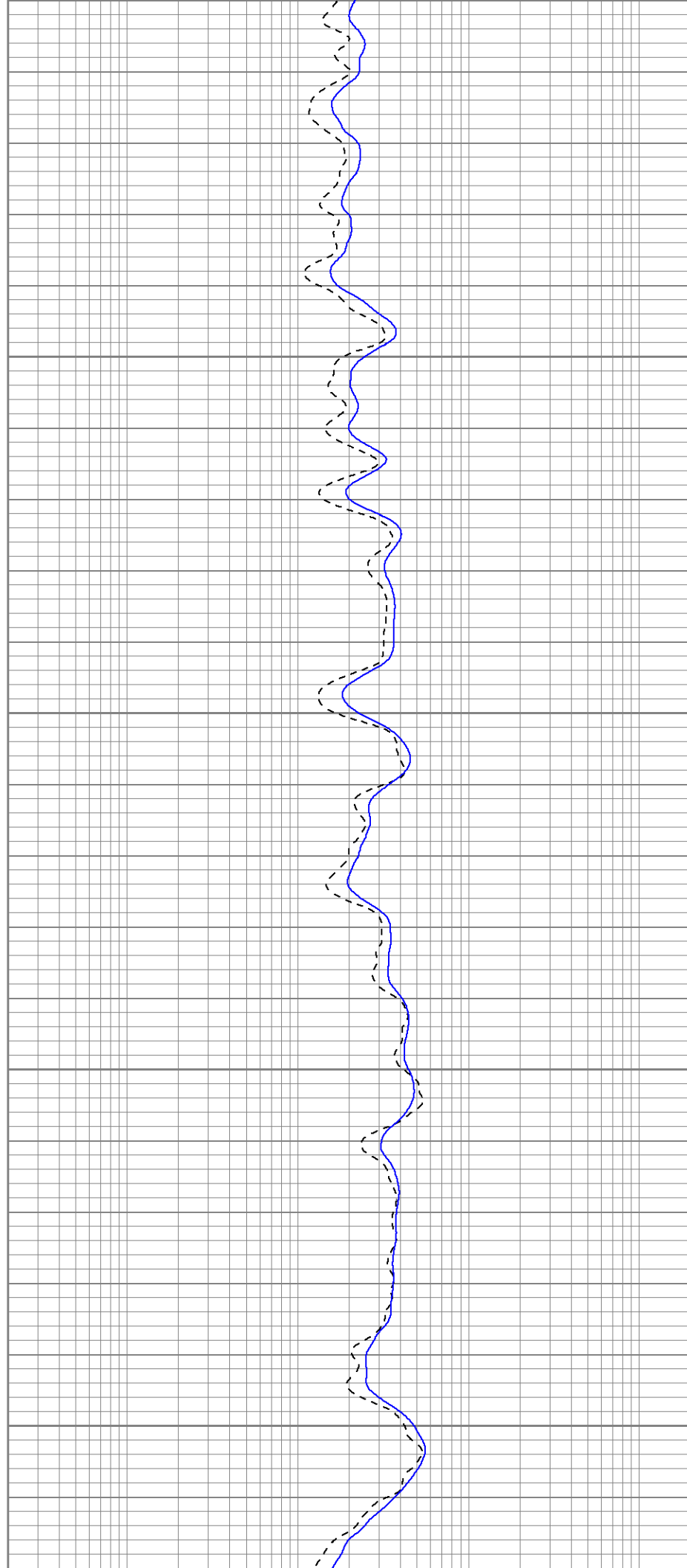
1800

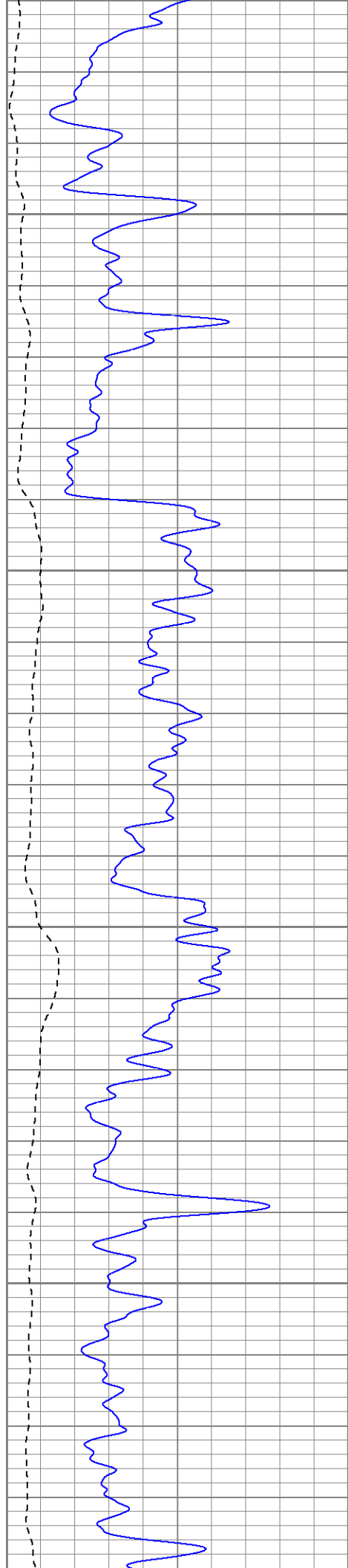
1850

1900

1950

2000



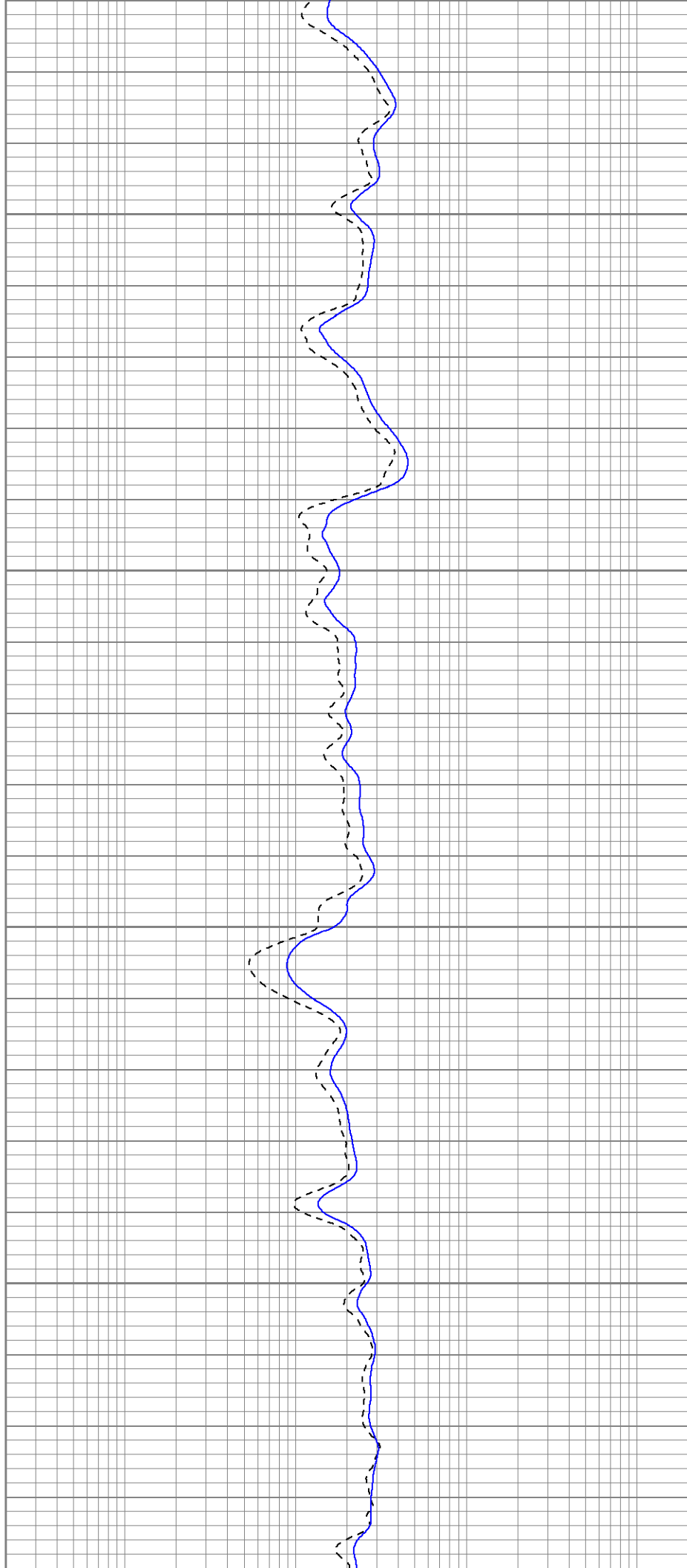


2050

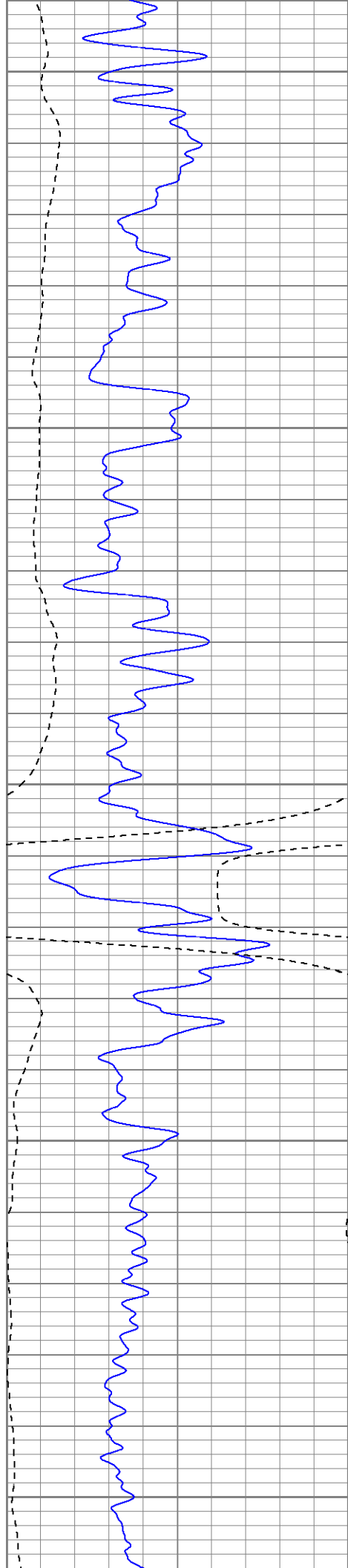
2100

2150

2200







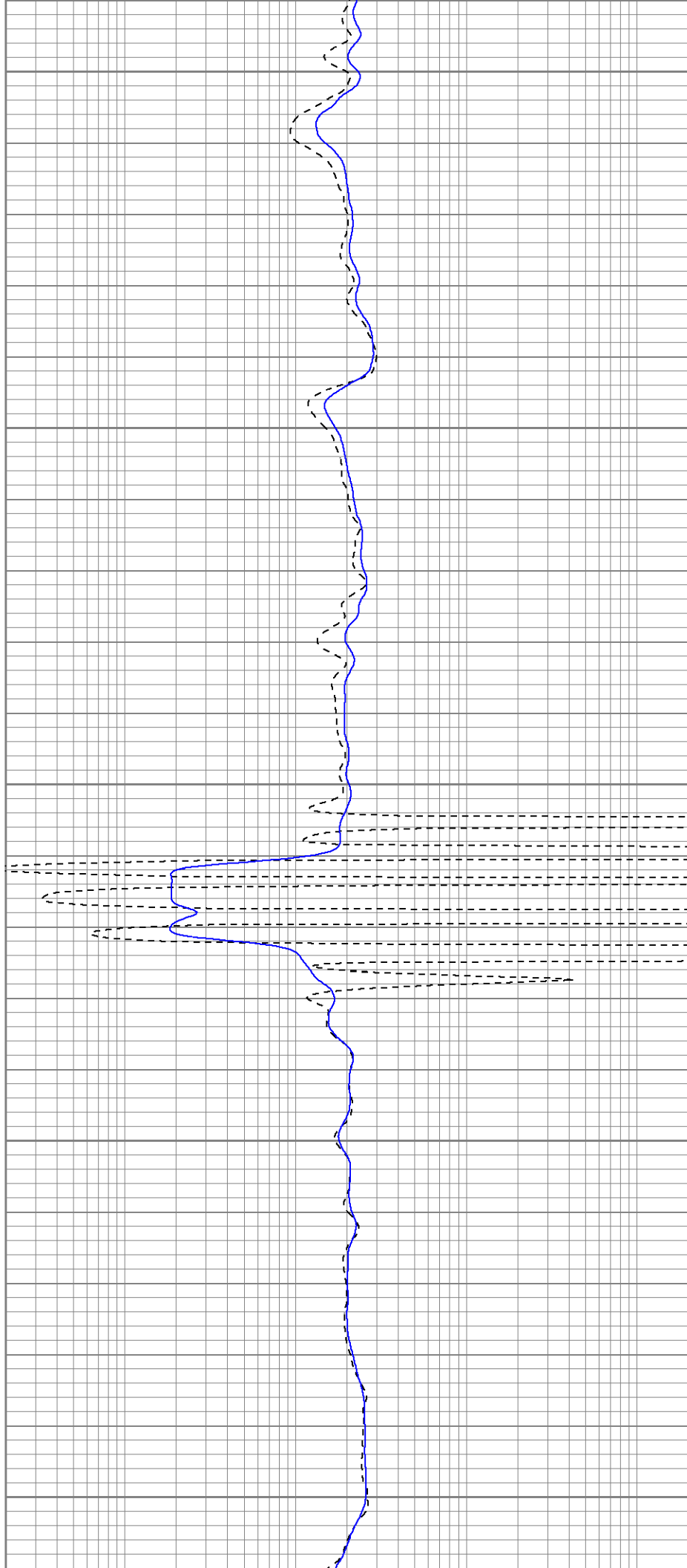
2250

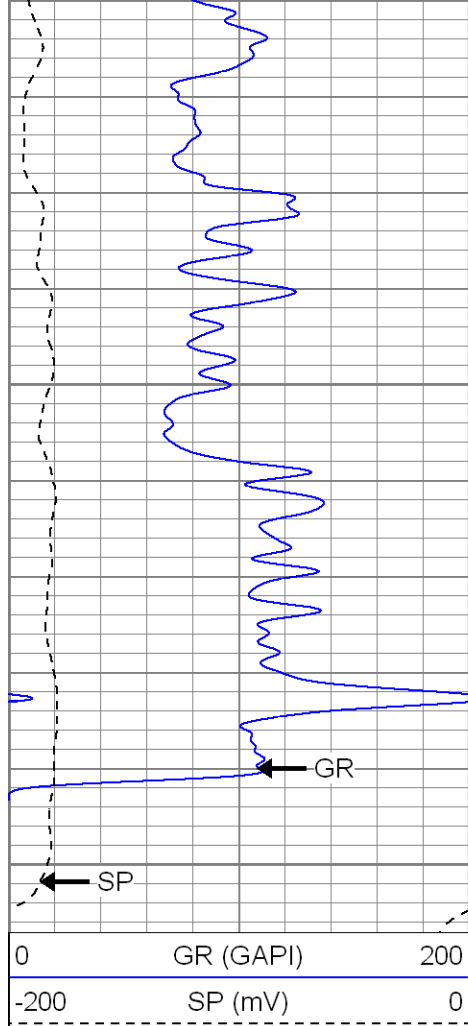
2300

2350

2400

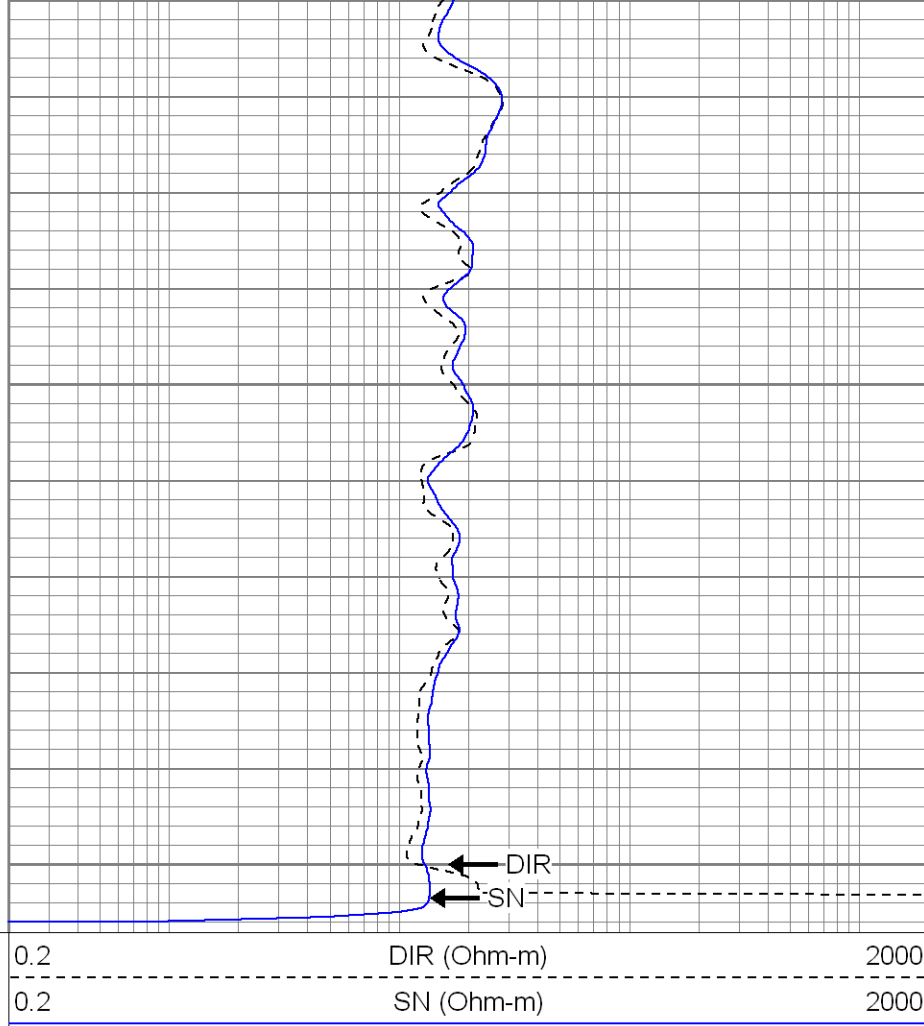
2450





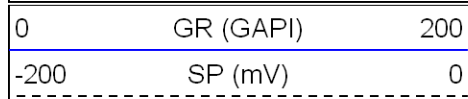
2500

2550

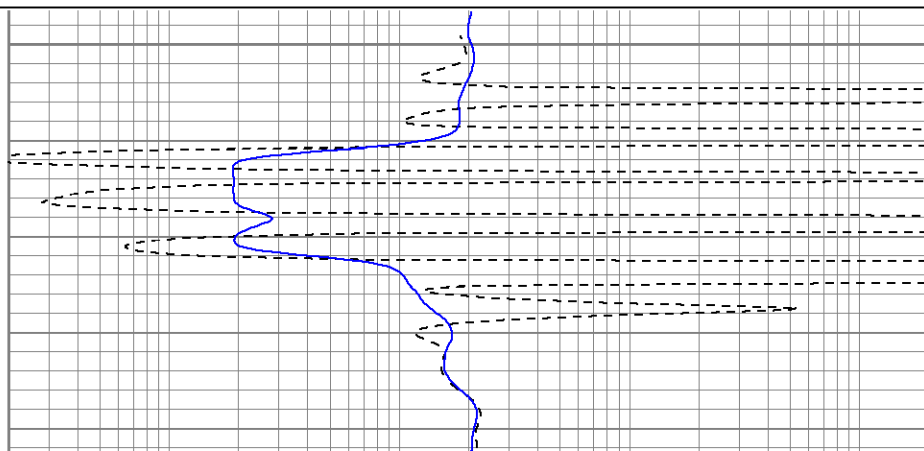
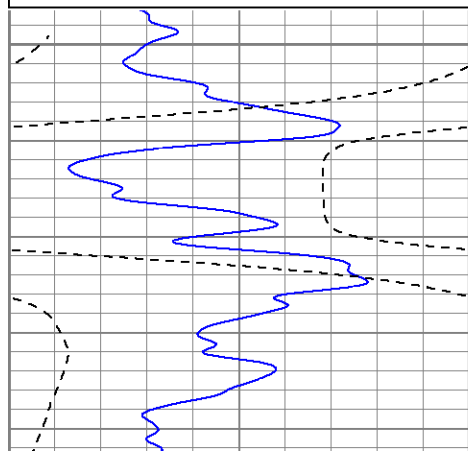
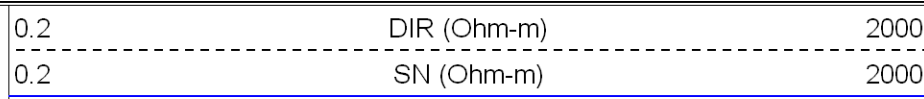


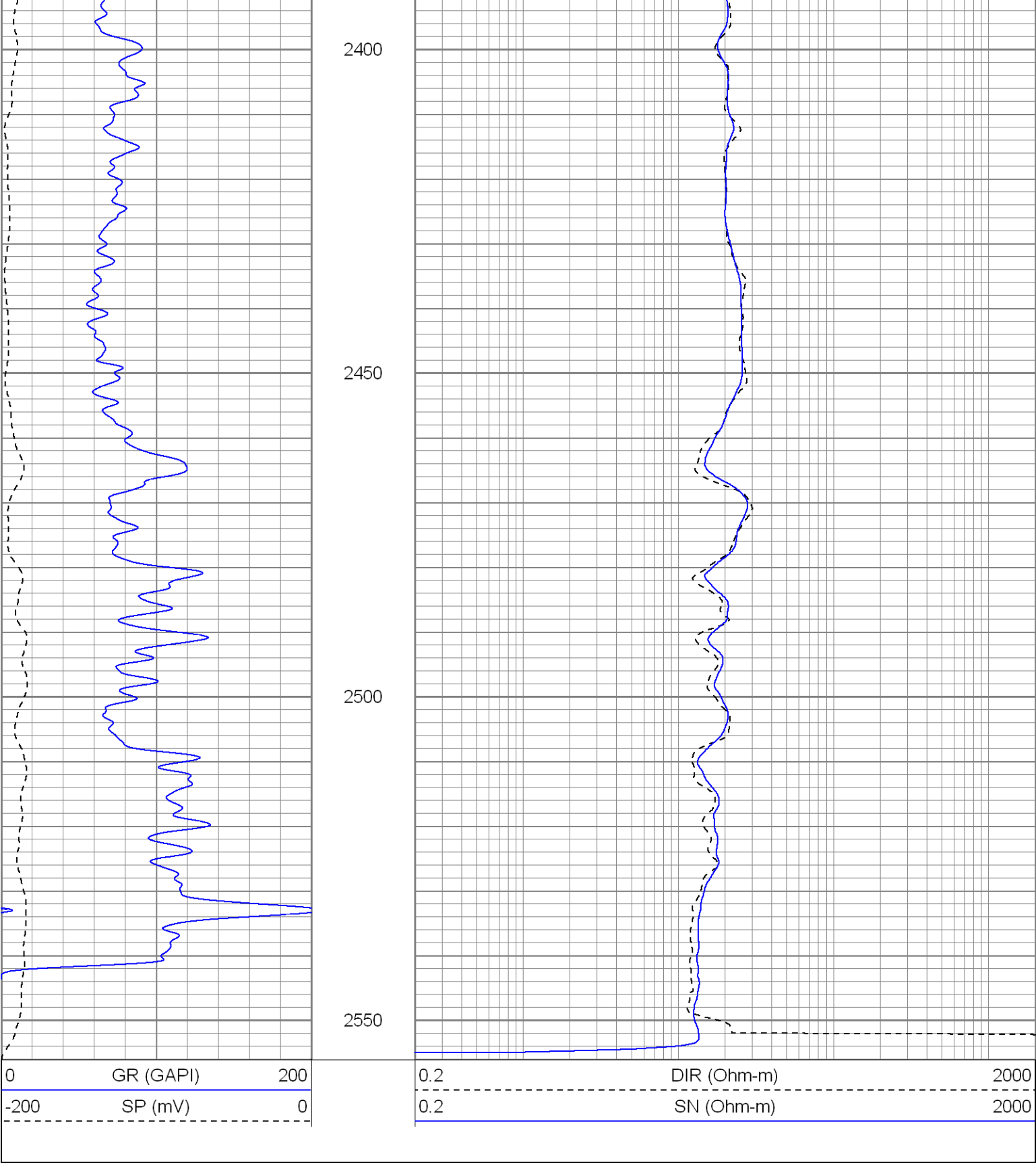
# Repeat Section

Database File: alibi.db  
 Dataset Pathname: pass4.1  
 Presentation Format: iel  
 Dataset Creation: Sat May 01 12:08:31 2010 by Calc Open-Cased 071220  
 Charted by: Depth in Feet scaled 1:240



2350





Calibration Report

Database File: alibi.db  
Dataset Pathname: pass2  
Dataset Creation: Sat May 01 10:36:47 2010 by Log Open-Cased 071220

Induction Tool Calibration Report

Serial Number: 040903  
Tool Model: Probe  
Downhole Cal Performed: Wed Apr 28 15:32:23 2010  
Surface Cal Performed: Wed Apr 28 15:32:23 2010

Surface Calibration:	Air	Loop	
Conductivity Reference:	0.000	500.000	mmho
Conductivity Reading:	-0.030	0.642	V
Internal Reference:	Zero	Cal	
Conductivity Reference:	0.000	500.000	mmho
Conductivity Reading:	0.006	0.641	V
Downhole Calibration:	Internal Zero	Internal Cal	
Conductivity Reference:	-0.702	499.904	mmho
Conductivity Reading:	0.000	0.000	V
Short Normal Reference:	0.000	20.000	Ohm-m
Short Normal Reading:	0.006	0.234	V
Results:	Gain	Offset	
Loop Conductivity:	744.475	22.334	
Downhole Correction:	1.000	0.000	
Short Normal Resistivity:	80.000	-2.000	

### Compensated Density Calibration Report

Serial-Model: 901-2.75POH  
Source / Verifier: /  
Master Calibration Performed: Wed Apr 28 14:58:17 2010

#### Master Calibration

	Density			Far Detector	Near Detector	
Magnesium	1.710	g/cc		976.87	587.14	cps
Aluminum	2.590	g/cc		174.01	286.32	cps
Spine Angle = 67.40			Density/Spine Ratio = 0.471			
	Size			Reading		
Small Ring	7.85	in		2.50	V	
Large Ring	17.00	in		4.51	V	


### Gamma Ray Calibration Report

Serial Number: 801  
Tool Model: 2.75POH  
Performed: Wed Apr 28 14:53:57 2010

Calibrator Value: 1.0 GAPI

Background Reading: 0.0 cps  
Calibrator Reading: 1.0 cps

Sensitivity: 0.6000 GAPI/cps

Sensor	Offset (ft)	Schematic	Description	Len (ft)	OD (in)	Wt (lb)
GR	24.84		None	0.75	1.50	5.00
			GR-2.75POH (801) Probe	3.73	2.75	43.00
CDL	16.21		CDL-2.75POH (901) Probe	8.43	2.75	106.00

LSD	10.21					
DCAL	15.94					
SSD	15.69					
DIC	6.24		IEL-Probe (040903)	13.46	2.75	93.00
SP	2.25					
SN	1.71					
		Dataset: alibi.db: field/well/run1/pass2 Total Length: 26.37 ft Total Weight: 247.00 lb O.D.: 2.75 in				