

**BAKER  
HUGHES****COMPENSATED NEUTRON LOG  
GAMMA RAY LOG****Baker Atlas**

|  |   |  |
|--|---|--|
| FILE NO:<br><b>1626</b>                                  | COMPANY<br><b>WELL</b><br><b>596-29C-12</b>   | MARATHON OIL COMPANY   |
| API NO:<br><b>05046180900000</b>                         | FIELD<br><b>COUNTY</b><br><b>GARFIELD</b>   | STATE<br><b>COLORADO</b>   |
| Ver. 3.87<br>PAD: 697-29C                                | LOCATION:<br>SHE: 1761' FSL & 1388' PHL<br>SEC <b>29</b> TWP <b>SS</b> RGE <b>98W</b>     | OTHER SERVICES   |
| PERMANENT DATUM<br>LOG MEASURED FROM<br>DRILL MEAS. FROM | G.L. _____ ELEVATION <b>8180 FT</b><br>K.B. _____ 24 FT ABOVE P.D.<br>KELLY BUSHING _____ | ELEVATIONS:<br>KB <b>8204 FT</b><br>DF <b>8203 FT</b><br>OL <b>8180 FT</b> |
| DATE   | 11-Feb-2010   |  |
| RUN  | 1   | 1  |
| SERVICE ORDER  | 579681  |  |
| DEPTH DRILLER  | 9728 FT   |  |
| DEPTH LOGGER   | 9880 FT   |  |
| BOTTOM LOGGED INTERVAL                                   | 9880 FT   |  |
| TOP LOGGED INTERVAL                                      | 2150 FT   |  |
| TIME STARTED   | 08:15   |  |
| TIME FINISHED  | 11:45   |  |
| OPERATOR RIG TIME  | 1 hr  |  |
| TYPE OF FLUID IN HOLE                                    | WATER   |  |
| FLUID DENSITY  | 8.80 LB/G   |  |
| FLUID SALINITY   | NA  |  |
| FLUID LEVEL  | NA  |  |
| LOGGED CELENT TOP  | NA  |  |
| WELLHEAD PRESSURE  | 0 PSI   |  |
| MAXIMUM HOLE DEVIATION                                   | NA  |  |
| NOMINAL LOGGING SPEED                                    | 30 F/IN   |  |
| MAX. RECORDED TEMP.                                      | 258 DEGF  |  |
| REFERENCE LOG  | ATLAS BOND LOG  |  |
| REFERENCE LOG DATE                                       | 06-JAN-2010   |  |
| EQUIP. NO.   | 6670  | VERNAL, UT   |
| RECORDED BY  | CUMMINGS  |  |
| WITNESSED BY   | NAUL  |  |

IN MAKING INTERPRETATIONS OF LOGS OUR EMPLOYEES WILL GIVE CUSTOMER THE BENEFIT OF THEIR BEST JUDGEMENT. BUT SINCE ALL INTERPRETATIONS ARE OPINIONS BASED ON INFERENCES FROM ELECTRICAL OR OTHER MEASUREMENTS, WE CANNOT, AND WE DO NOT GUARANTEE THE ACCURACY OR CORRECTNESS OF ANY INTERPRETATION. WE SHALL NOT BE LIABLE OR RESPONSIBLE FOR ANY LOSS, COST, DAMAGES, OR EXPENSES WHATSOEVER INCURRED OR SUSTAINED BY THE CUSTOMER RESULTING FROM ANY INTERPRETATION MADE BY ANY OF OUR EMPLOYEES.

**BOREHOLE RECORD**

| BIT SIZE | FROM | TO      |
|----------|------|---------|
| 8.75 IN  | 0 FT | 9758 FT |

**CASING RECORD**

| SIZE   | WEIGHT    | GRADE | FROM | TO      |
|--------|-----------|-------|------|---------|
| 4.5 IN | 11.6 LB/F | P-110 | 0 FT | 9758 FT |

**REMARKS**

RUN 1 TRIP 1 : DEPTH CORRELATED TO BOND LOG DONE ON 06-JAN-2010  
ON RAN FREE DUE TO CASING SIZE  
CREW: ROBERTSON/ MCCORMICK  
THANK YOU FOR CHOOSING BAKER ATLAS

**EQUIPMENT DATA**

| RUN | TRIP | TOOL | SERIES NO. | SERIAL NO. | POSITION |
|-----|------|------|------------|------------|----------|
| 1   | 1    | CCL  | 23348A     | 101114233  | FREE     |

|   |   |        |       |          |      |
|---|---|--------|-------|----------|------|
| 1 | 1 | TTWA   | 2880A | 10380720 | FREE |
| 1 | 1 | TEL/GR | 3518A | 10081345 | FREE |
| 1 | 1 | CN     | 2436A | 10124386 | FREE |

## MAIN LOG 5"/100FT SCALE

ECLIPS 6.01 Feb 21, 2008  
Updates: 1,40,41 Patches: 1,2,4,5,6

Thu Feb 11 11:30:33 2010

Perpllt /main/62

Cplot

Pdf\_Cpp /main/16

Fileview 5.42

### PARAMETER AND FILTER SUMMARY REPORT

FILE: /data/1827/1870a/c04.prm  
LOGGING MODE: DEPTH DIRECTION: UP  
TOP DEPTH: 2120.410 ft BOTTOM DEPTH: 2309.836 ft

#### SYMMETRIC FILTER

| MEASUREMENT TYPE | PARAMETER   | VALUE      | UNITS | INTERVAL (ft) |        |
|------------------|-------------|------------|-------|---------------|--------|
| GR LOW RES       | FILTER (.1) | medium (1) |       | TOP           | BOTTOM |
| GR MED RES       | FILTER ()   | medium (1) |       | ''            | ''     |
| TENSION          | FILTER ()   | medium (1) |       | ''            | ''     |
| CN LOW RES       | FILTER (.1) | medium (1) |       | ''            | ''     |
| CN MED RES       | FILTER ()   | medium (1) |       | ''            | ''     |

#### BOREHOLE & CEMENT

| MEASUREMENT TYPE                  | PARAMETER                  | VALUE          | UNITS | INTERVAL (ft) |        |
|-----------------------------------|----------------------------|----------------|-------|---------------|--------|
| CASING - BOREHOLE & CEMENT VOLUME | CASING O.D.                | 4.500          | 1in   | TOP           | BOTTOM |
|                                   | CASING THICKNESS           | 0.250          | 1in   | ''            | ''     |
| BIT SIZE                          | BIT SIZE                   | 8.750          | 1in   | ''            | ''     |
| BOREHOLE CORR DIAMETER SOURCE     | CALIPER/FIXED DIA. (cnbh*) | USE FIXED SIZE |       | ''            | ''     |
| BOREHOLE CORR DIAMETER            | FIXED DIAMETER (cnbh*)     | 8.750          | 1in   | ''            | ''     |

#### ACCELERATION PROCESSING

| MEASUREMENT TYPE  | PARAMETER        | VALUE         | UNITS | INTERVAL (ft) |        |
|-------------------|------------------|---------------|-------|---------------|--------|
| ACCEL CORR SWITCH | ACCEL DEPTH CORR | CORRECTION ON |       | TOP           | BOTTOM |

#### CN PROCESSING

| MEASUREMENT TYPE              | PARAMETER            | VALUE     | UNITS | INTERVAL (ft) |        |
|-------------------------------|----------------------|-----------|-------|---------------|--------|
| CN MATRIX                     | 2436 MATRIX          | SANDSTONE |       | TOP           | BOTTOM |
| CN BOREHOLE CORRECTION        | SALINITY             | 861       | ppm   | ''            | ''     |
|                               | BOREHOLE CORRECTION  | ON        |       | ''            | ''     |
| CN CASING & CEMENT CORRECTION | CORRECTION           | ON        |       | ''            | ''     |
|                               | BIT SIZE BEHIND CSNG | 8.750     | 1in   | ''            | ''     |

### CURVE DESCRIPTION REPORT

| CURVE NAME | CURVE ALIAS | CREATION DATE        | CURVE DESCRIPTION                             |
|------------|-------------|----------------------|---|
| F1:BIT     | BIT         | Feb 11 11:22:20 2010 | BIT SIZE                                      |
| F1:CCL     | CCL         | Feb 11 11:22:20 2010 | CASING COLLAR LOCATOR                         |
| F1:CNCF    | CNCF        | Feb 11 11:22:20 2010 | FIELD NORMALIZED COMPENSATED NEUTRON POROSITY |
| F1:GR      | GR          | Feb 11 11:22:20 2010 | GAMMA RAY                                     |
| F1:TEN     | TEN         | Feb 11 11:22:20 2010 | DIFFERENTIAL TENSION                          |

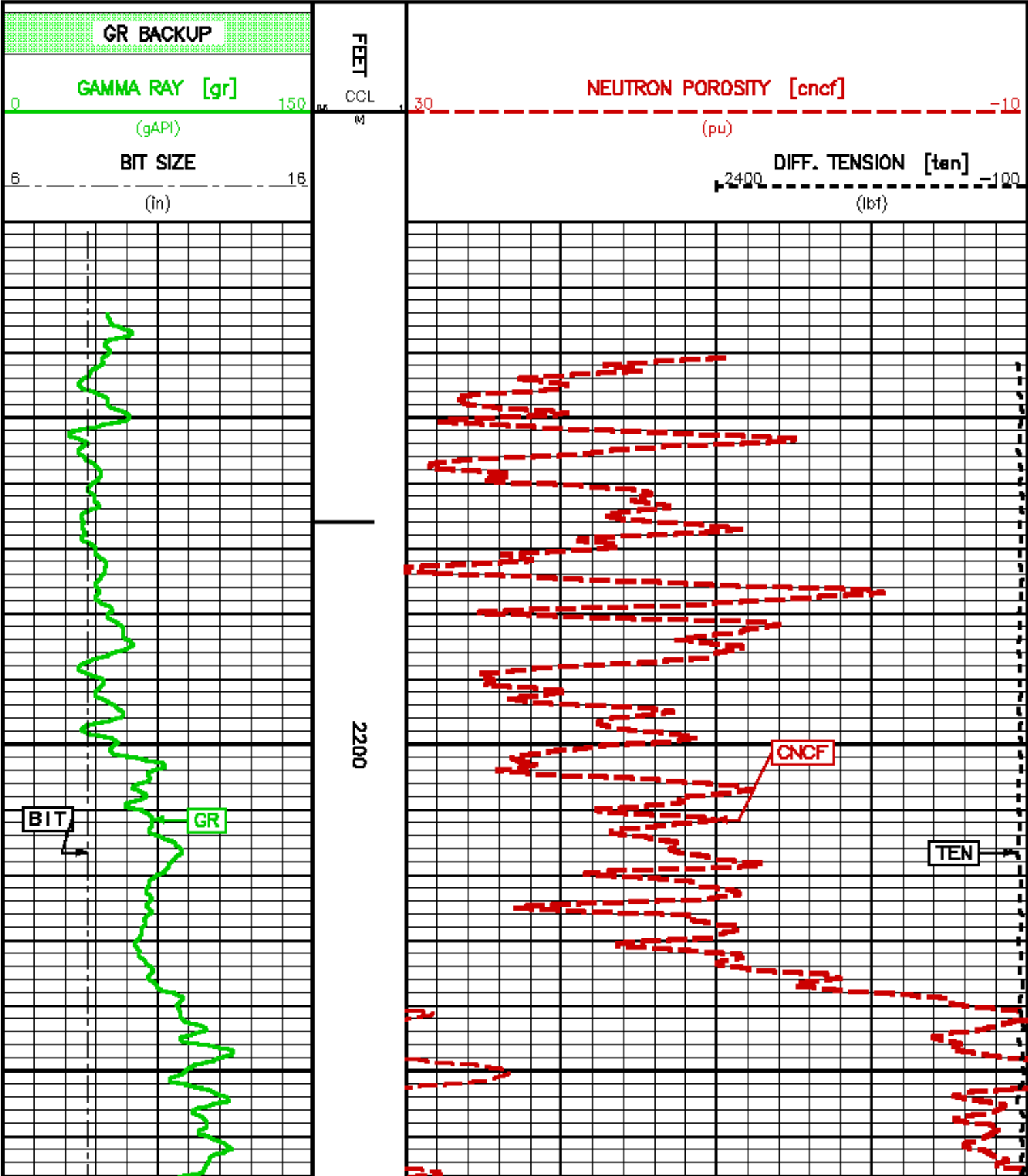
### CURVE MEASURE POINT OFFSET

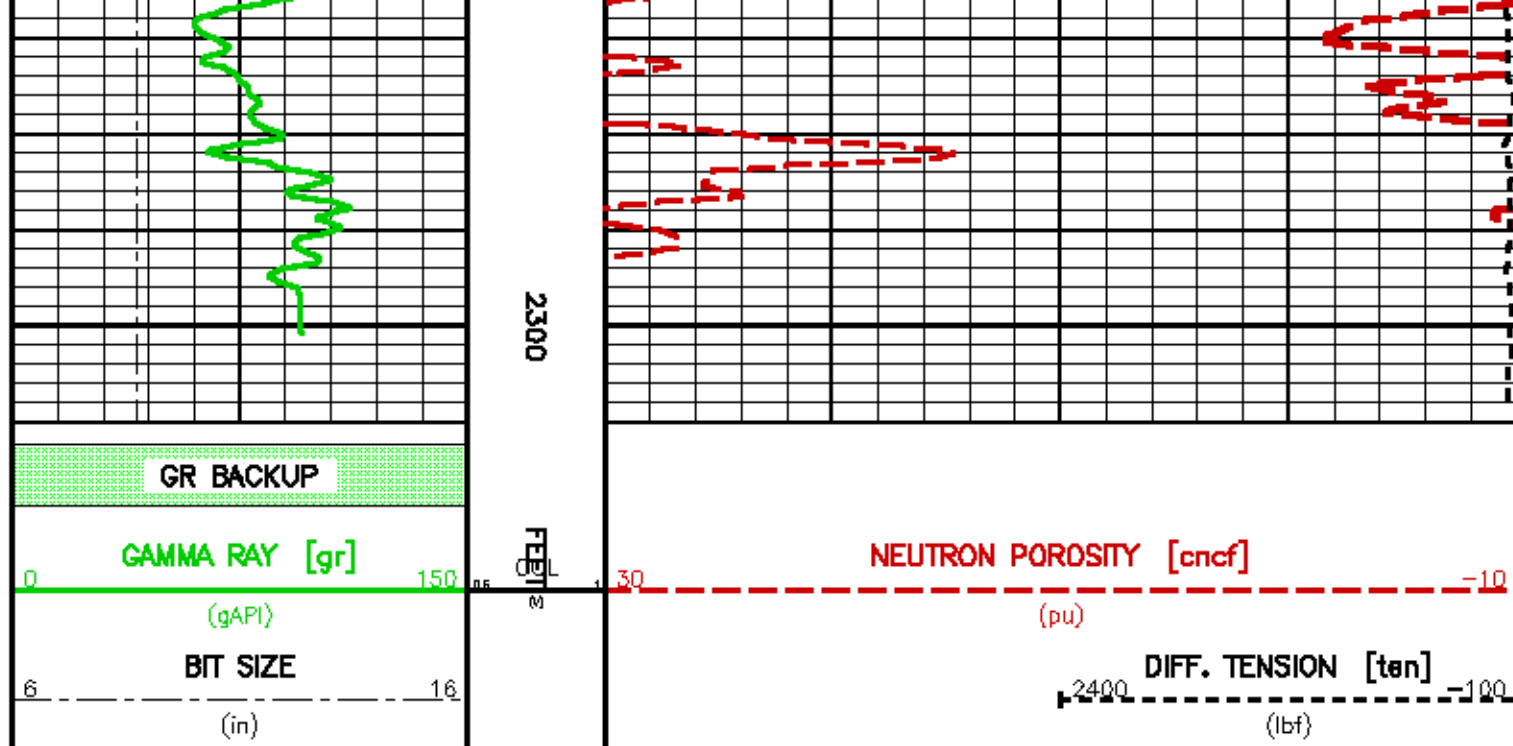
| CURVE | OFFSET (ft) | CURVE | OFFSET (ft) | CURVE | OFFSET (ft) | CURVE | OFFSET (ft) |
|-------|-------------|-------|-------------|-------|-------------|-------|-------------|
|-------|-------------|-------|-------------|-------|-------------|-------|-------------|

|     |       |      |      |     |      |
|-----|-------|------|------|-----|------|
| BIT | 0.00  | CNCF | 1.50 | TEN | 0.00 |
| CCL | 19.00 | GR   | 7.50 |     |      |

Presentation : cpu1:cn\_sase.pdf [5"/100" Scale]  
 Plot Interval : 2121.5 - 2314.75 Feet

Data File 1 : F1 : cpu1:/data/1627/k870alc04\_sase.xif  
 Created On : Feb 11 11:22:20 2010  
 Company : MARATHON OIL COMPANY  
 Well : 506-29C-12  
 Field : GRAND VALLEY  
 File Interval : 0 - 2316 Feet  
 Oct : k870alc





## MAIN LOG 5"/100FT SCALE

ECLIPS 6.01 Feb 21, 2008  
Updates: 1,40,41 Patches: 1,2,4,5,6

Thu Feb 11 11:12:08 2010

Perplt /main/62

Cplot

Pdf\_Cpp /main/16

Fileview 5.42

### PARAMETER AND FILTER SUMMARY REPORT

FILE: /data/1827/1870mlc03.prm  
LOGGING MODE: DEPTH DIRECTION: UP  
TOP DEPTH: 6170.113 ft BOTTOM DEPTH: 9000.000 ft

#### SYMMETRIC FILTER

| MEASUREMENT TYPE | PARAMETER   | VALUE      | UNITS | INTERVAL (ft) |        |
|------------------|-------------|------------|-------|---------------|--------|
| GR LOW RES       | FILTER (.1) | medium (1) |       | TOP           | BOTTOM |
| GR MED RES       | FILTER ()   | medium (1) |       | "             | "      |
| TENSION          | FILTER ()   | medium (1) |       | "             | "      |
| CN LOW RES       | FILTER (.1) | medium (1) |       | "             | "      |
| CN MED RES       | FILTER ()   | medium (1) |       | "             | "      |

#### BOREHOLE & CEMENT

| MEASUREMENT TYPE                  | PARAMETER                  | VALUE          | UNITS | INTERVAL (ft) |        |
|-----------------------------------|----------------------------|----------------|-------|---------------|--------|
| CASING - BOREHOLE & CEMENT VOLUME | CASING O.D.                | 4.500          | 1in   | TOP           | BOTTOM |
|                                   | CASING THICKNESS           | 0.250          | 1in   | "             | "      |
| BIT SIZE                          | BIT SIZE                   | 8.750          | 1in   | "             | "      |
| BOREHOLE CORR DIAMETER SOURCE     | CALIPER/FIXED DIA. (cnbh*) | USE FIXED SIZE |       | "             | "      |
| BOREHOLE CORR DIAMETER            | FIXED DIAMETER (cnbh*)     | 8.750          | 1in   | "             | "      |

#### ACCELERATION PROCESSING

| MEASUREMENT TYPE  | PARAMETER        | VALUE         | UNITS | INTERVAL (ft) |        |
|-------------------|------------------|---------------|-------|---------------|--------|
| ACCEL CORR SWITCH | ACCEL DEPTH CORR | CORRECTION ON |       | TOP           | BOTTOM |

## CN PROCESSING

| MEASUREMENT TYPE              | PARAMETER            | VALUE     | UNITS | INTERVAL (ft) |        |
|-------------------------------|----------------------|-----------|-------|---------------|--------|
| CN MATRIX                     | 2436 MATRIX          | SANDSTONE |       | TOP           | BOTTOM |
| CN BOREHOLE CORRECTION        | SALINITY             | 881       | ppm   | ''            | ''     |
|                               | BOREHOLE CORRECTION  | ON        |       | ''            | ''     |
| CN CASING & CEMENT CORRECTION | CORRECTION           | ON        |       | ''            | ''     |
|                               | BIT SIZE BEHIND CSNG | 8.750     | 1in   | ''            | ''     |

## CURVE DESCRIPTION REPORT

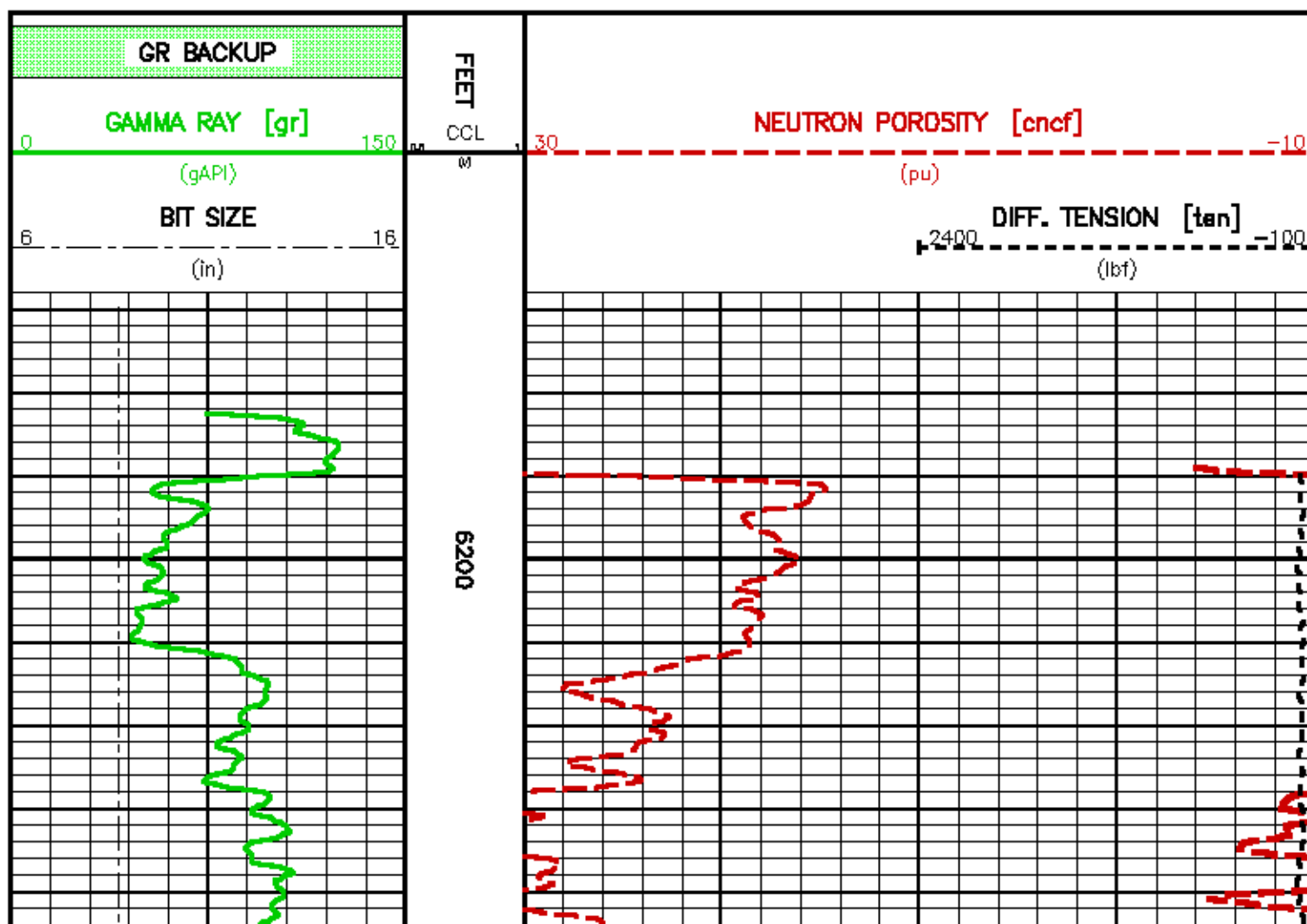
| CURVE NAME | CURVE ALIAS | CREATION DATE        | CURVE DESCRIPTION                             |
|------------|-------------|----------------------|---|
| F1:BIT     | BIT         | Feb 11 10:06:21 2010 | BIT SIZE                                      |
| F1:CCL     | CCL         | Feb 11 10:06:21 2010 | CASING COLLAR LOCATOR                         |
| F1:CNCF    | CNCF        | Feb 11 10:06:21 2010 | FIELD NORMALIZED COMPENSATED NEUTRON POROSITY |
| F1:GR      | GR          | Feb 11 10:06:21 2010 | GAMMA RAY                                     |
| F1:TEN     | TEN         | Feb 11 10:06:21 2010 | DIFFERENTIAL TENSION                          |

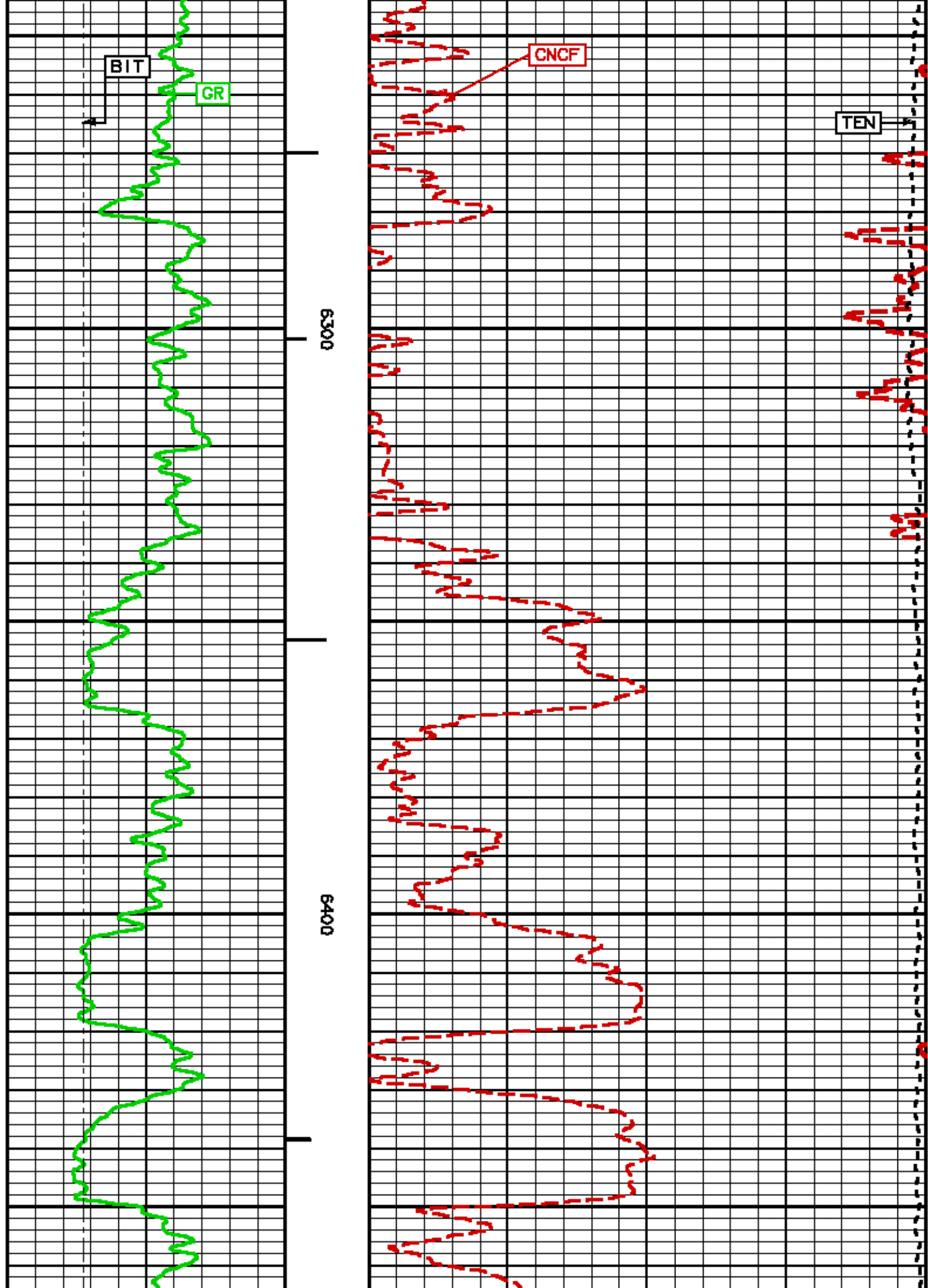
## CURVE MEASURE POINT OFFSET

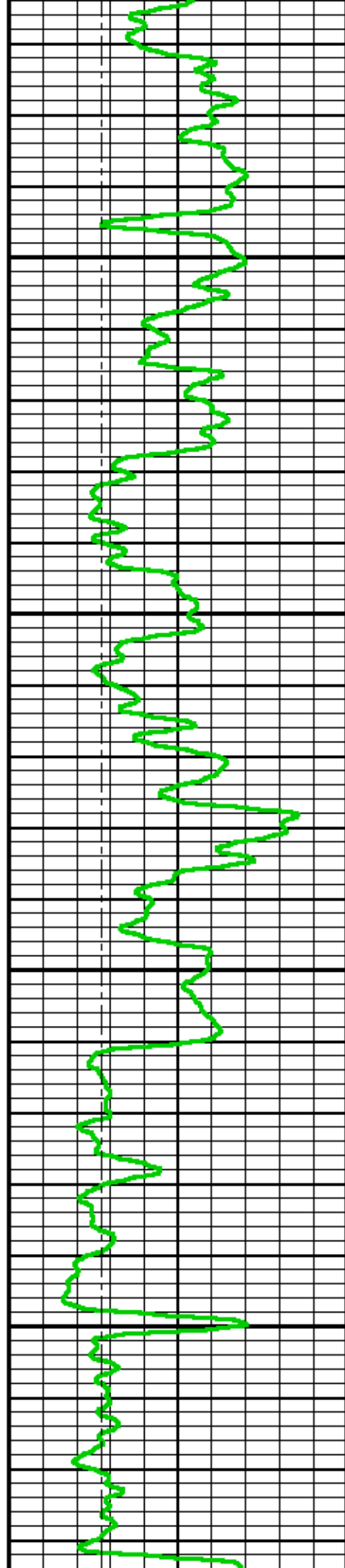
| CURVE | OFFSET (ft) | CURVE | OFFSET (ft) | CURVE | OFFSET (ft) | CURVE | OFFSET (ft) |
|-------|-------------|-------|-------------|-------|-------------|-------|-------------|
| BIT   | 0.00        | CNCF  | 1.50        | TEN   | 0.00        |       |             |
| CCL   | 19.00       | GR    | 7.50        |       |             |       |             |

Presentation : cpu1:cn\_main.pdf [5"/100' Scale]  
 Plot Interval : 8168.75 - 9702.75 Feet

Data File 1 : F1 : cpu1:/data/1627/k870alc03\_main.xtf  
 Created On : Feb 11 10:06:21 2010  
 Company : MARATHON OIL COMPANY  
 Well : 586-28C-12  
 Field : GRAND VALLEY  
 File Interval : 0 - 9704 Feet  
 Oct : k870alc

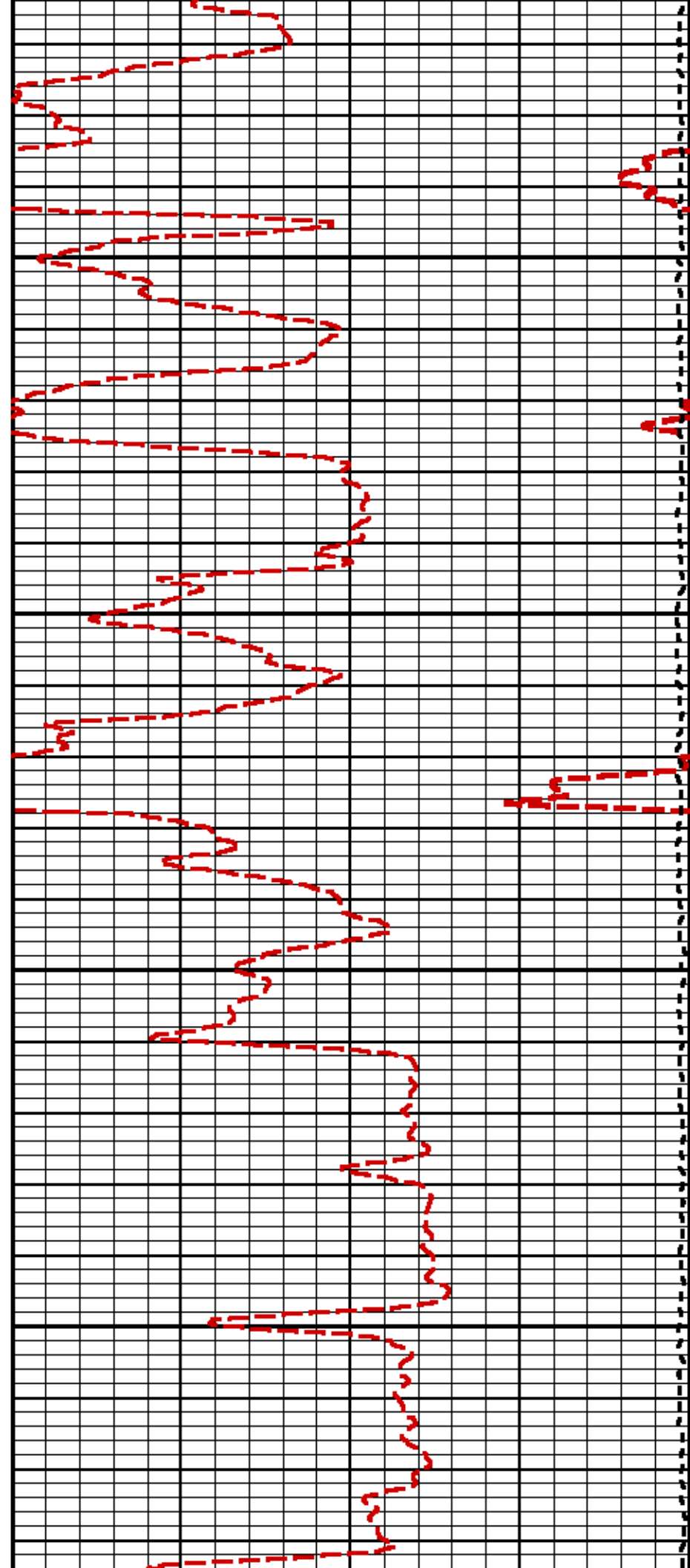






6500

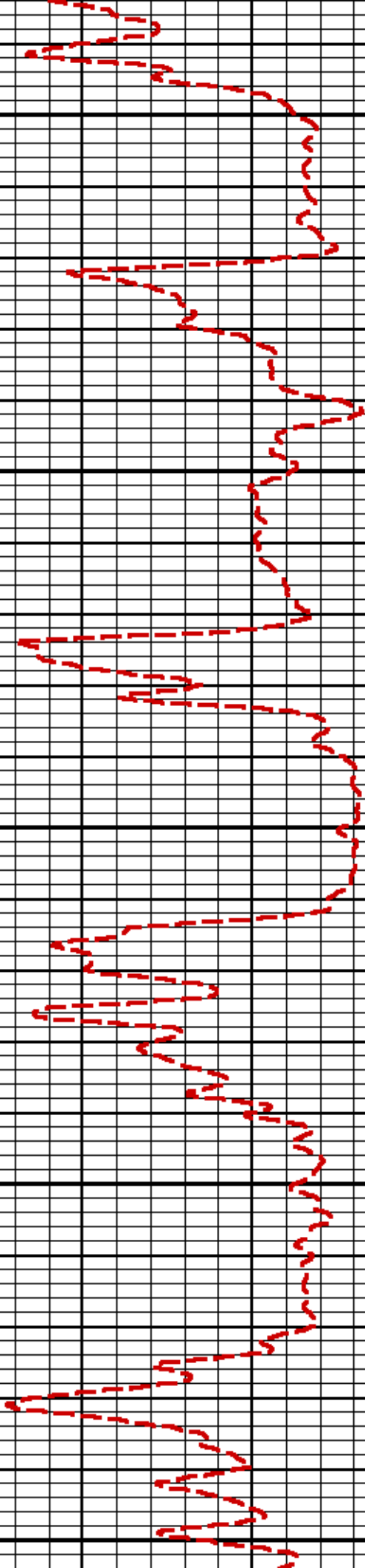
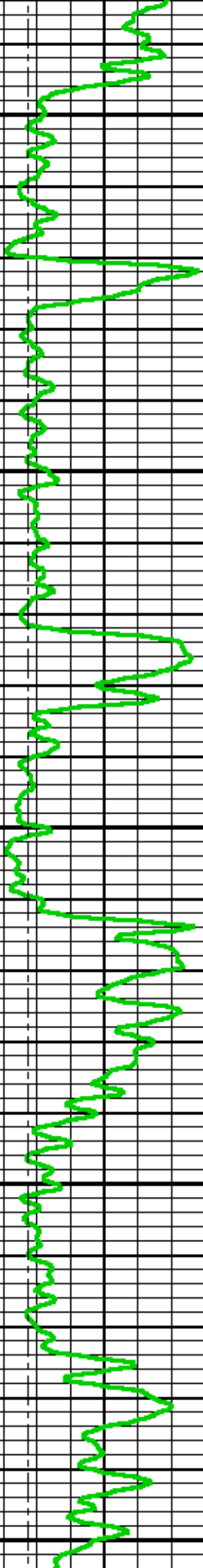
6600



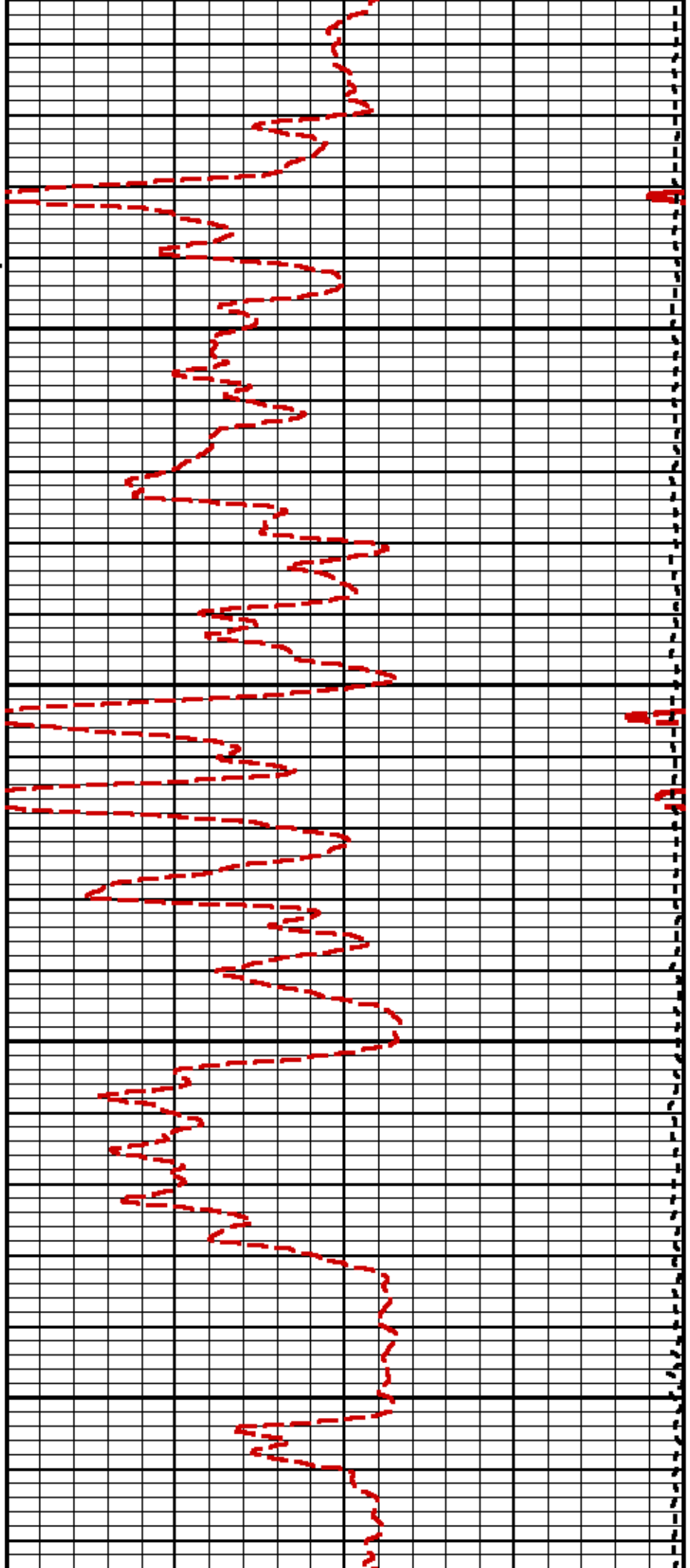
6700

6800

6900

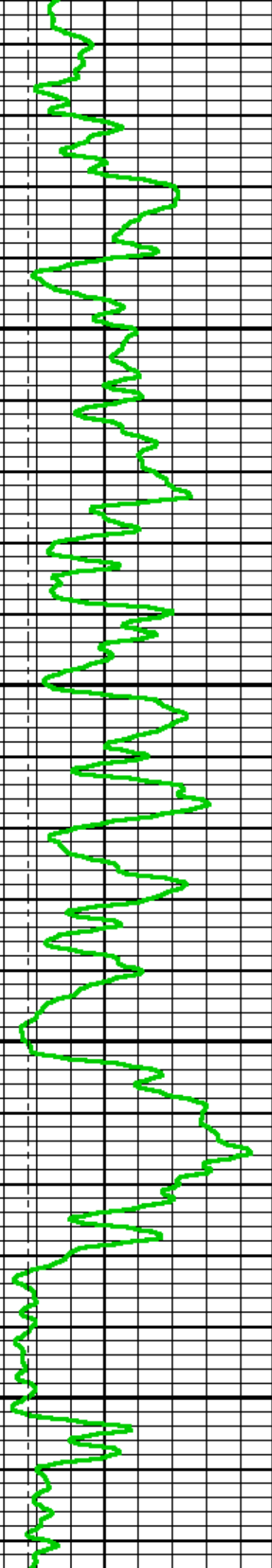


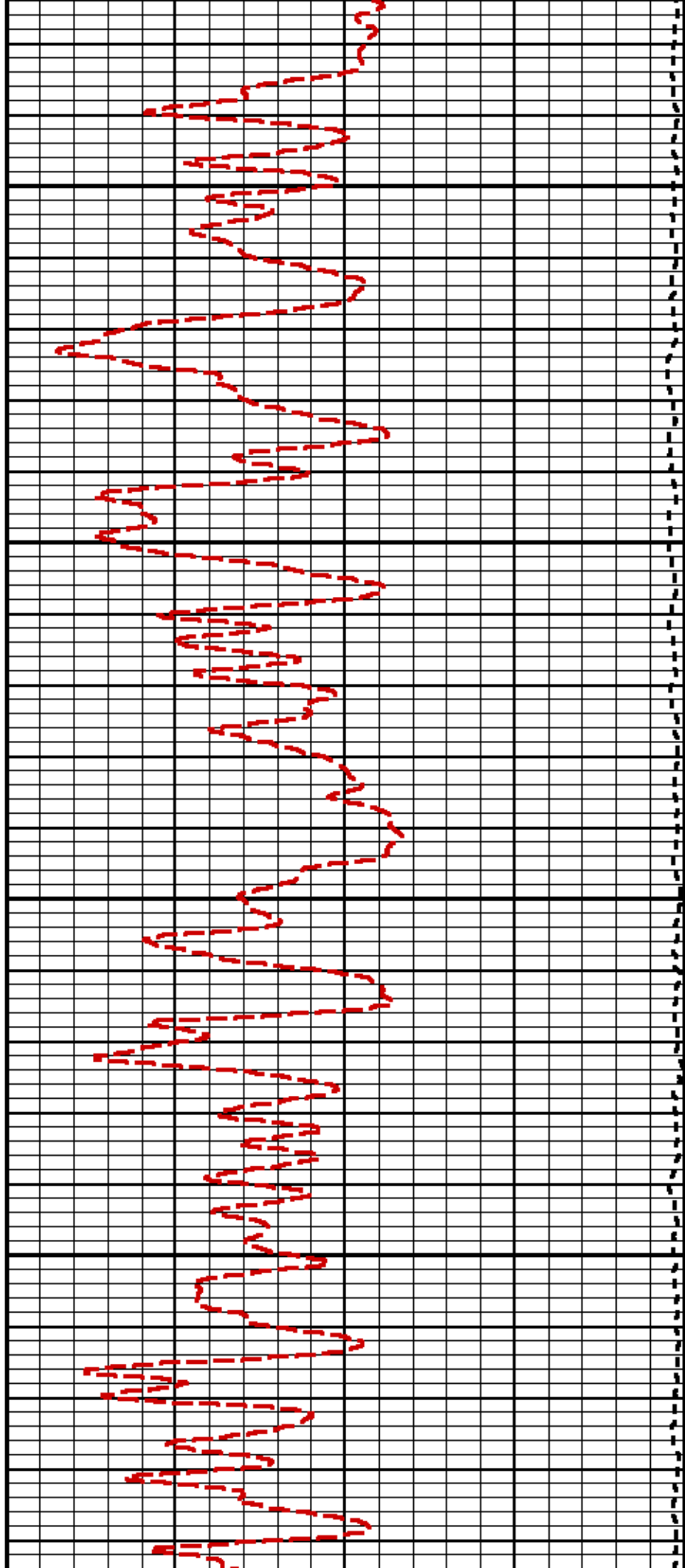




7000

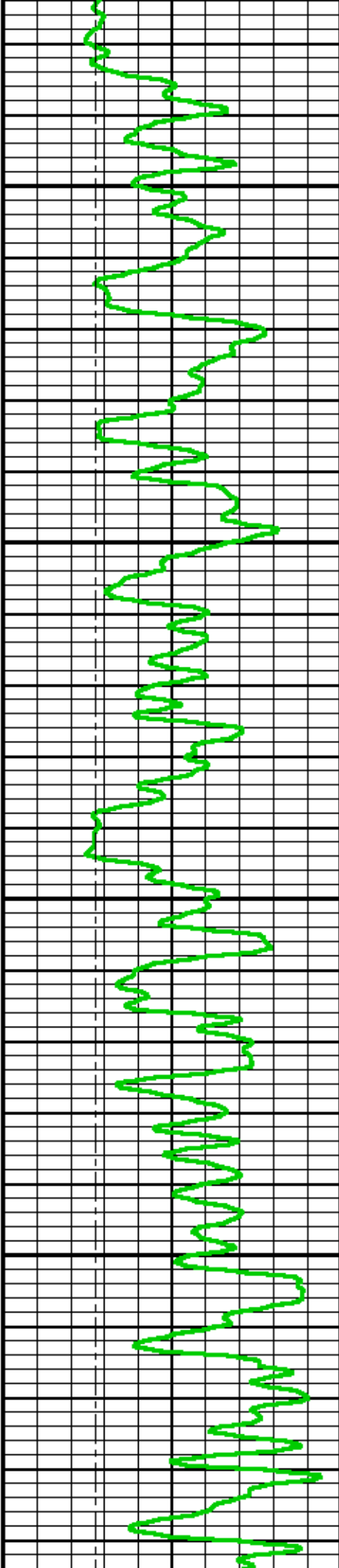
7100

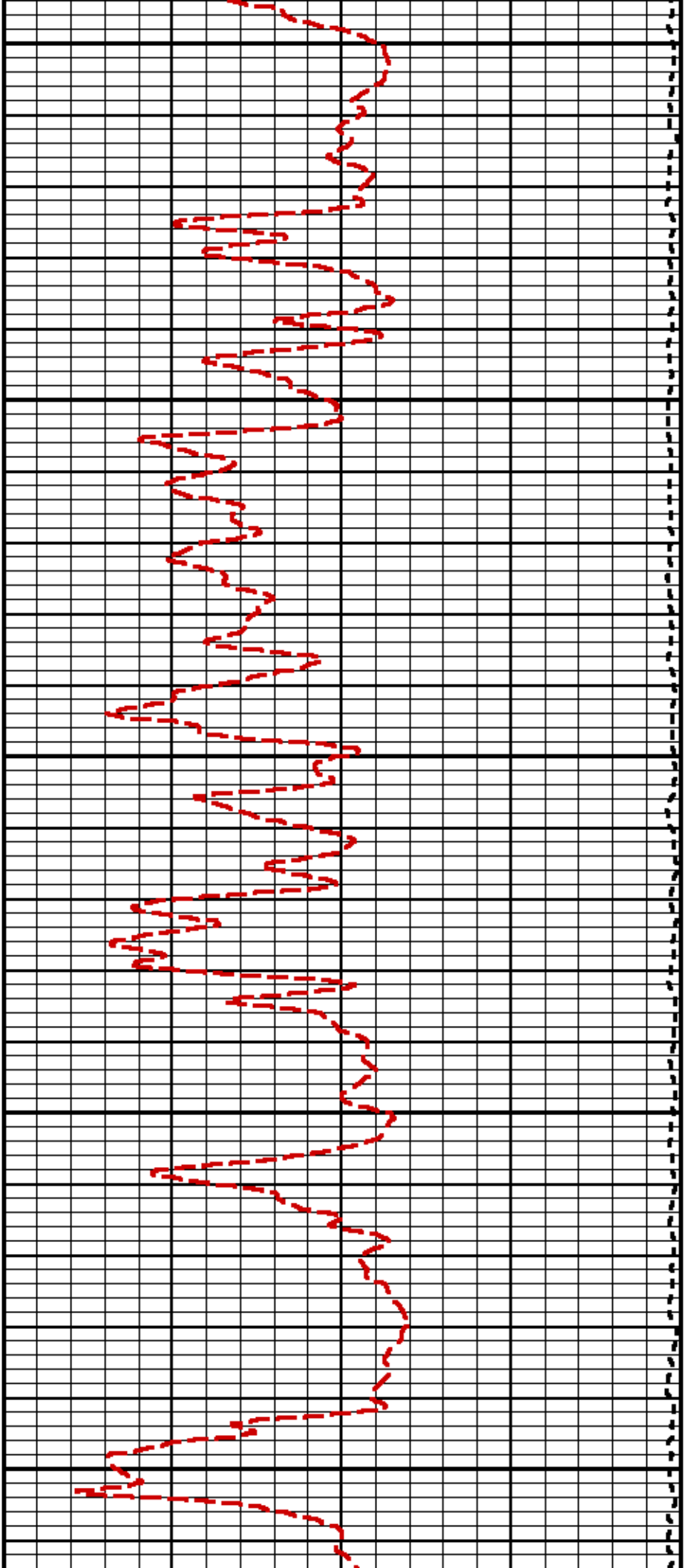




7200

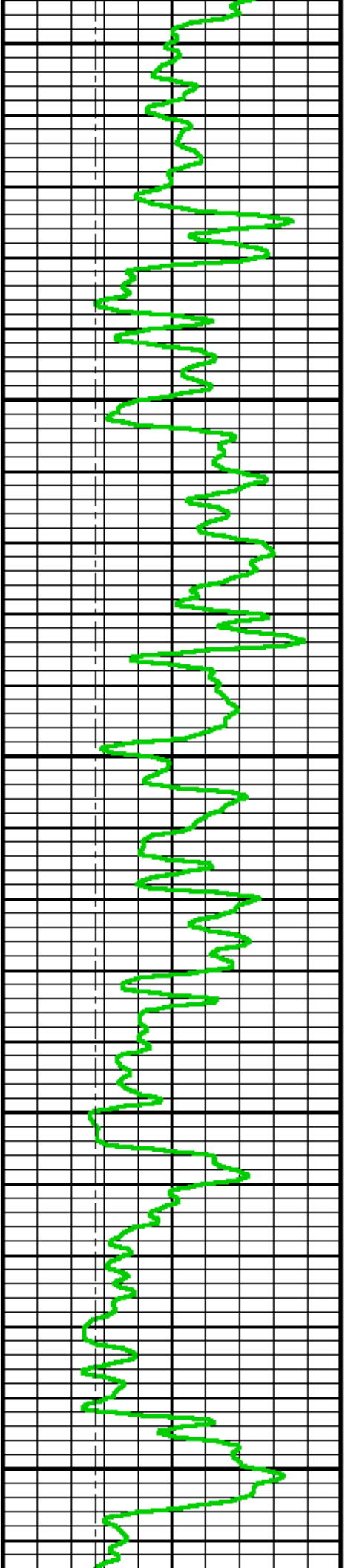
7300

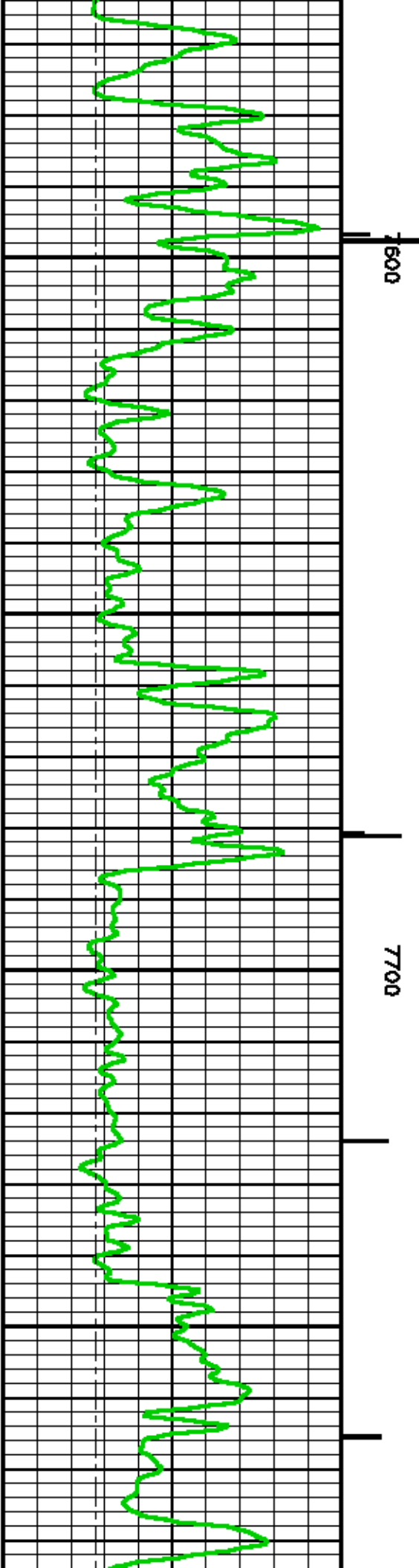
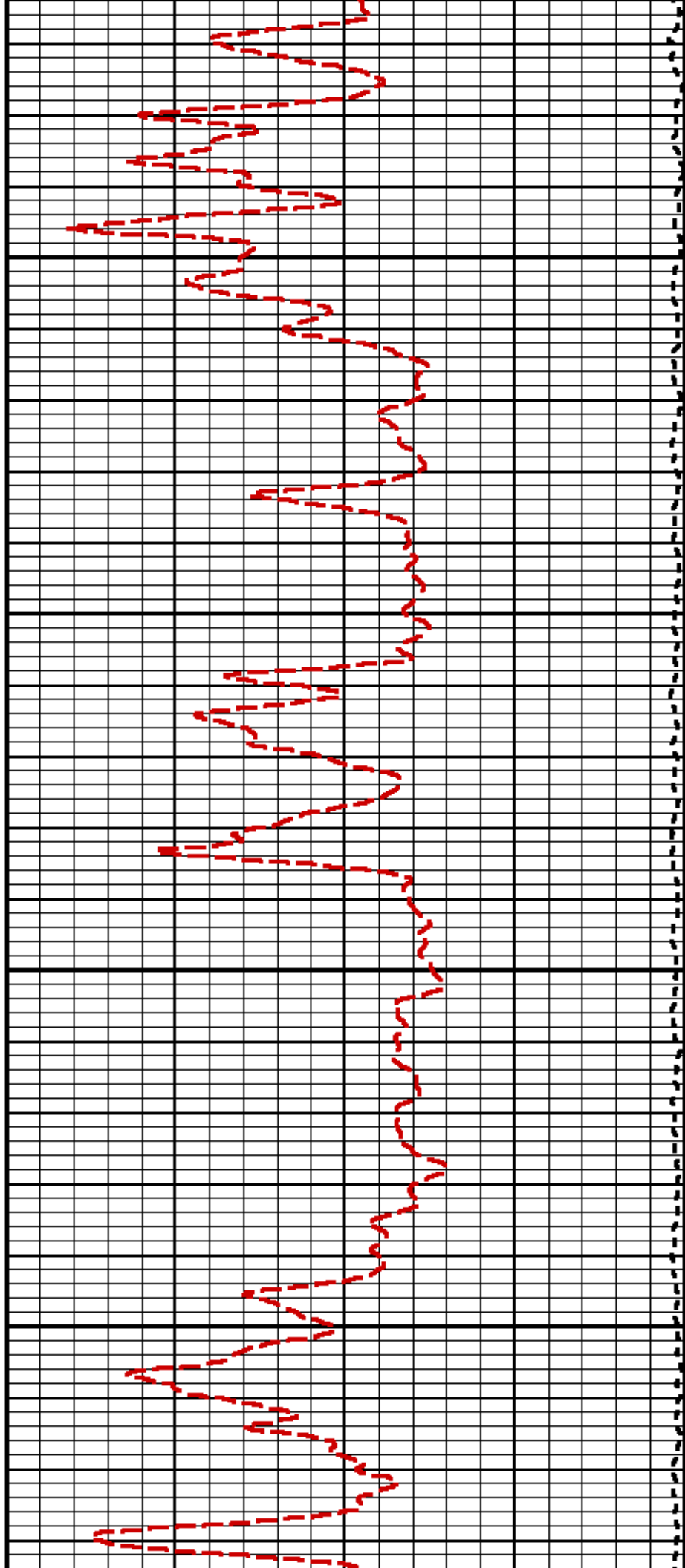


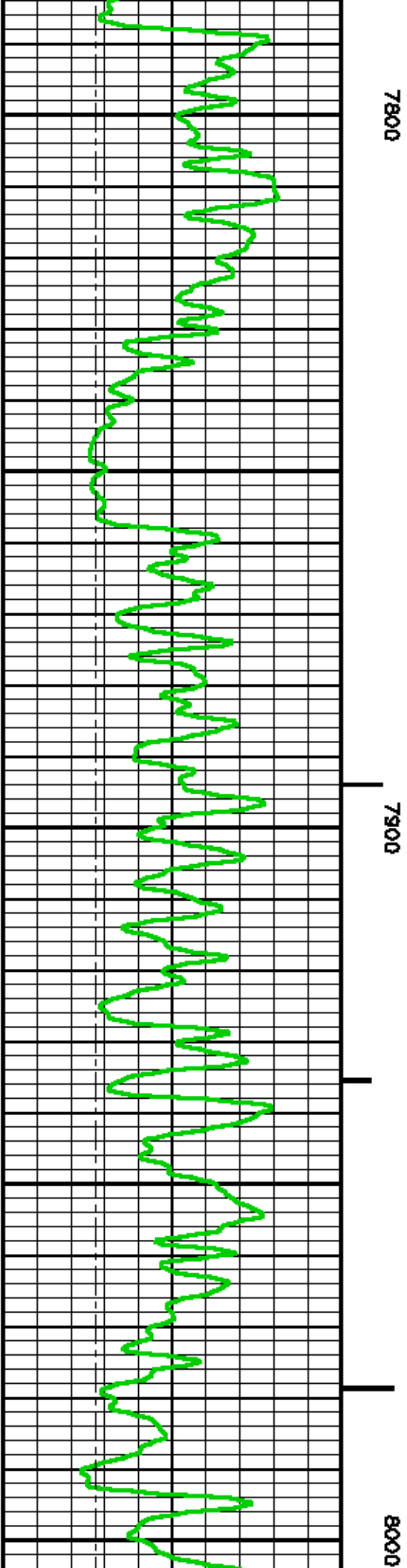
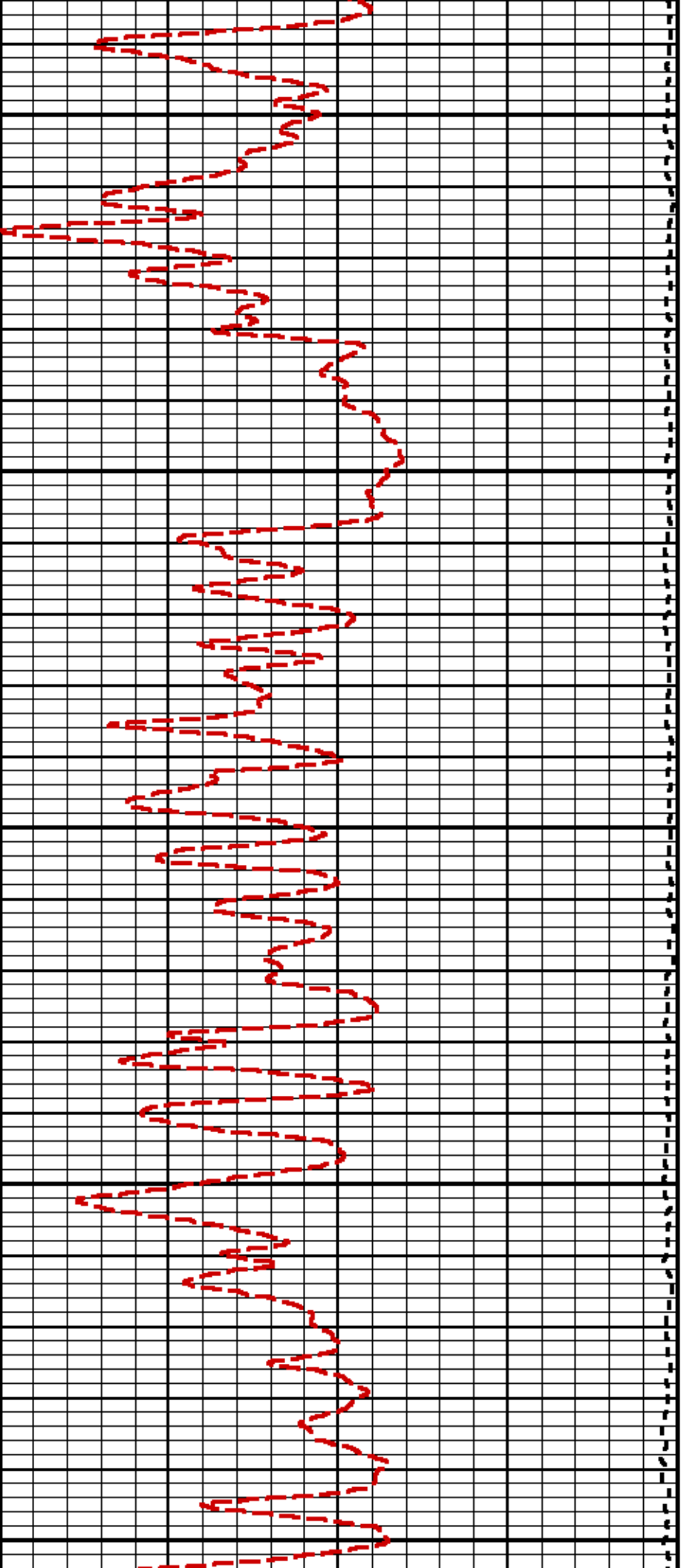


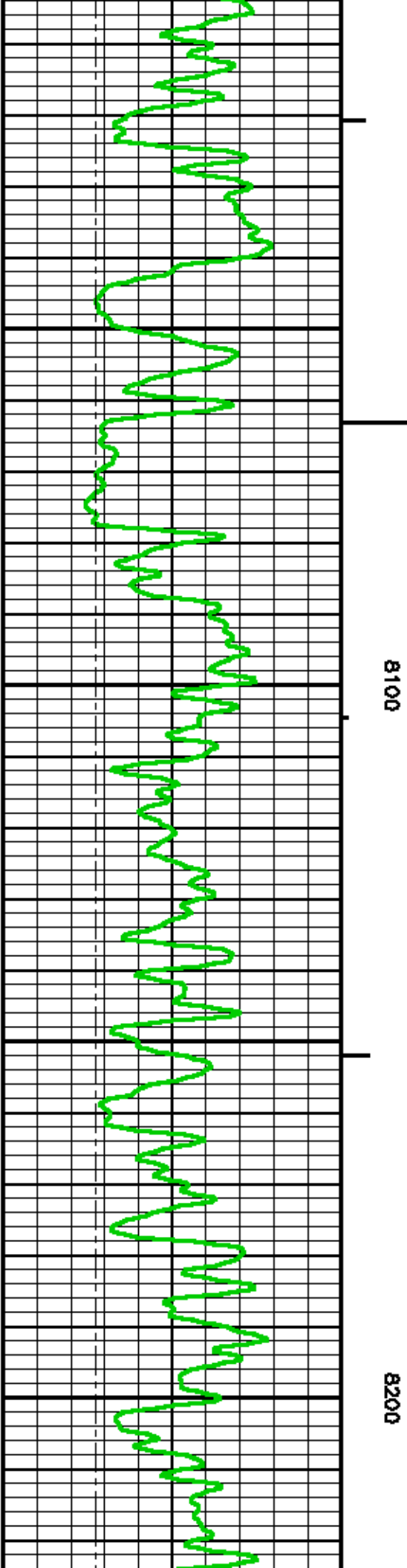
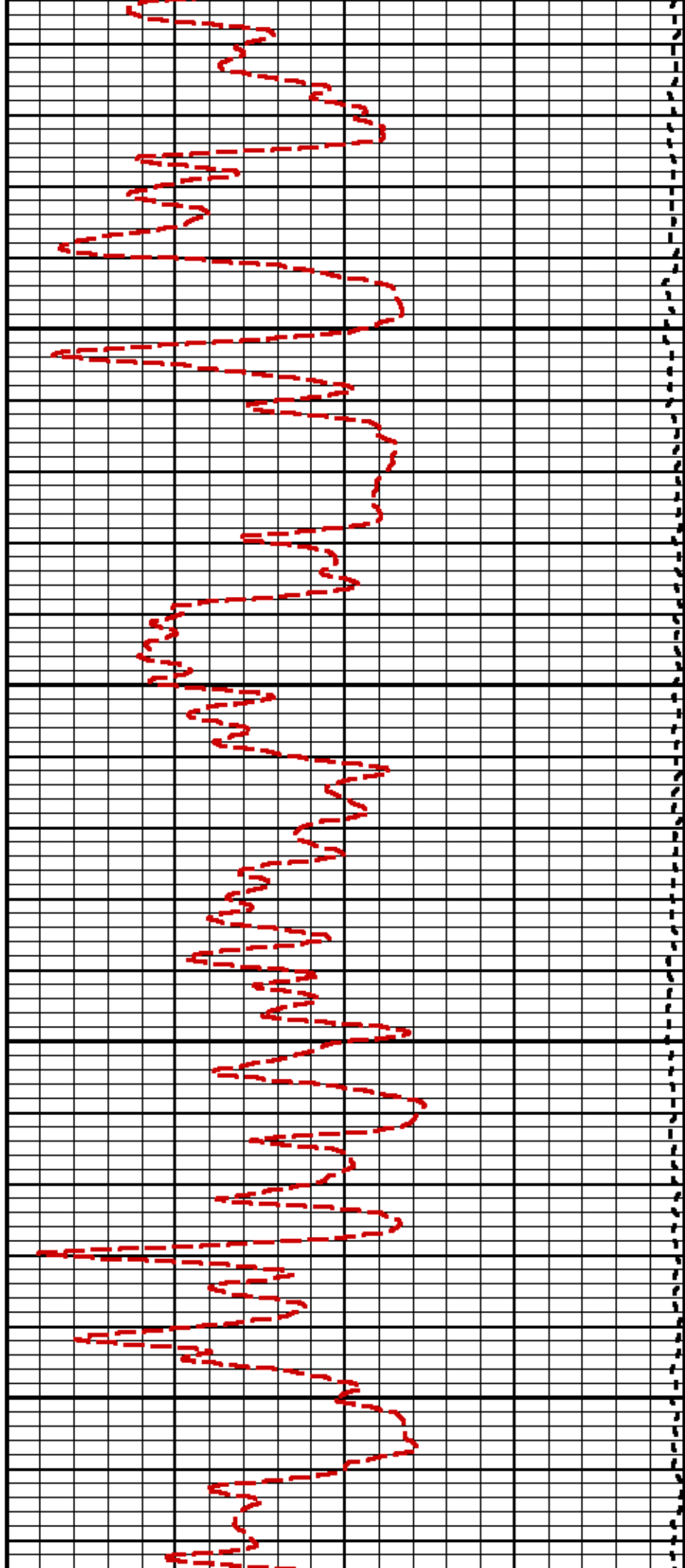
7400

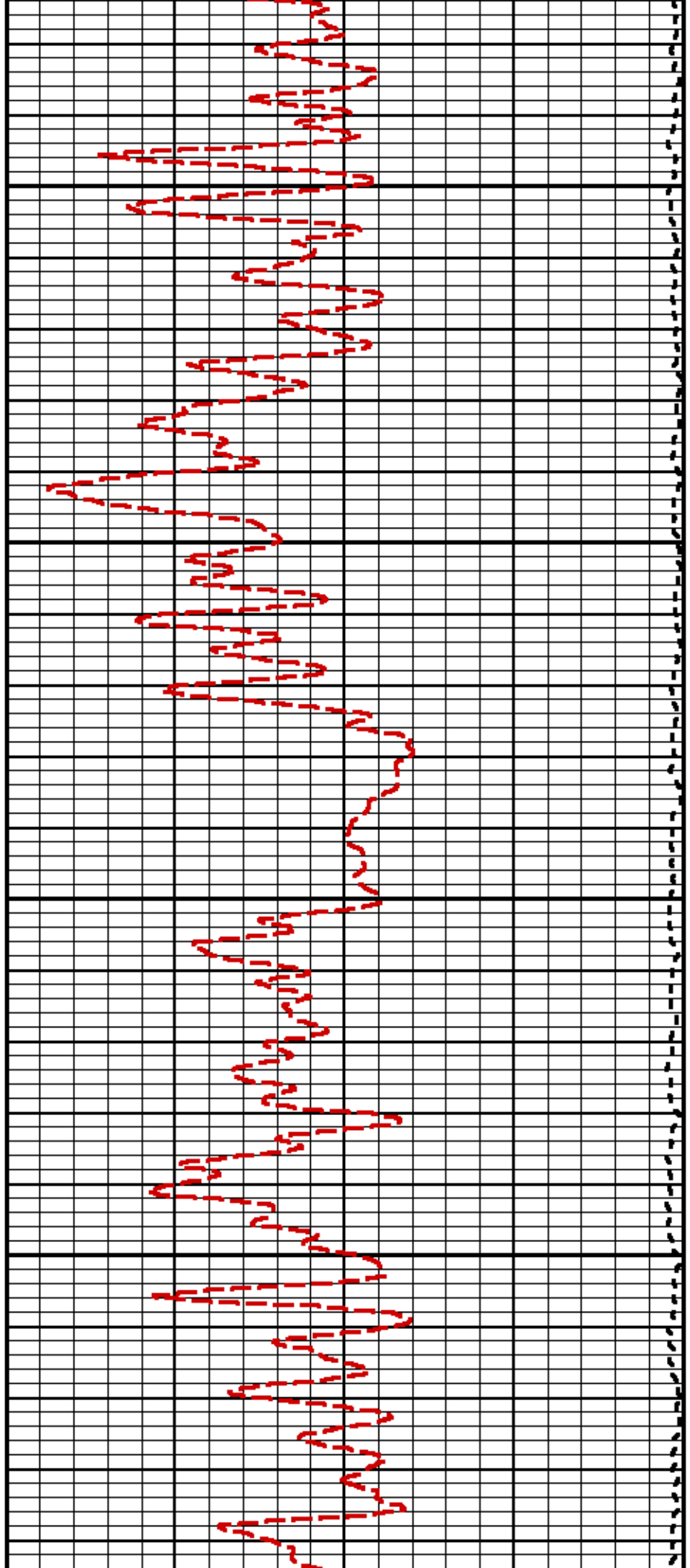
7500





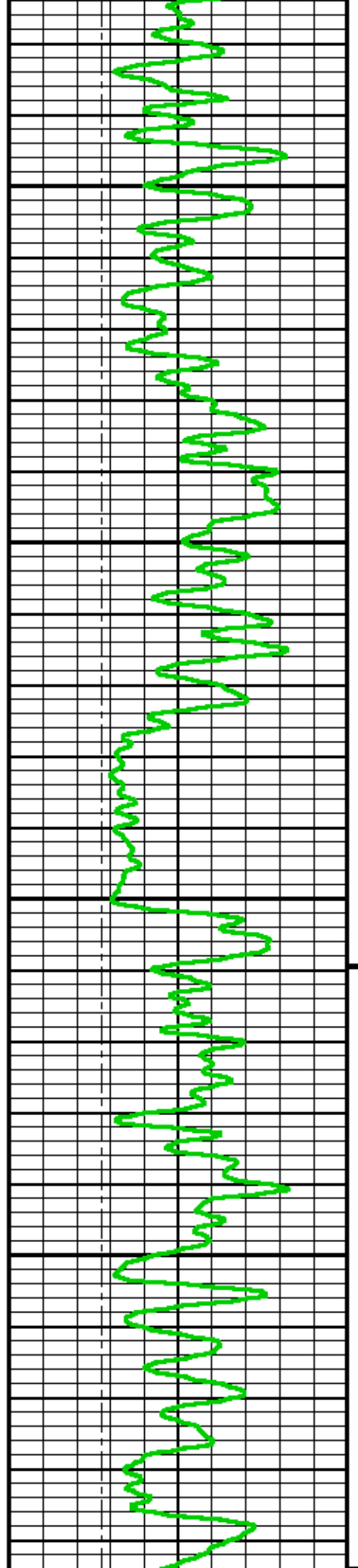






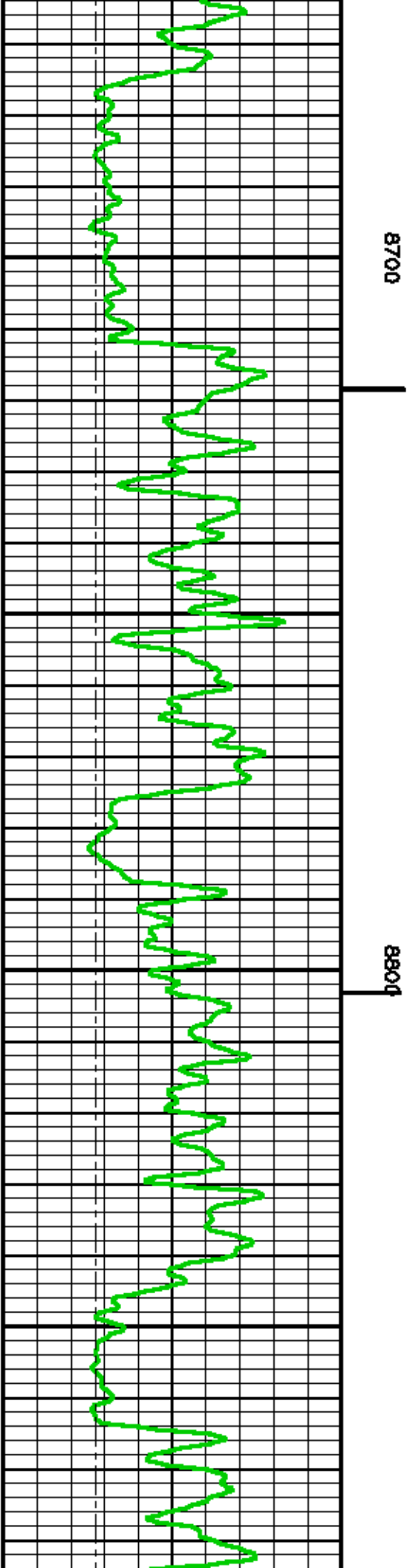
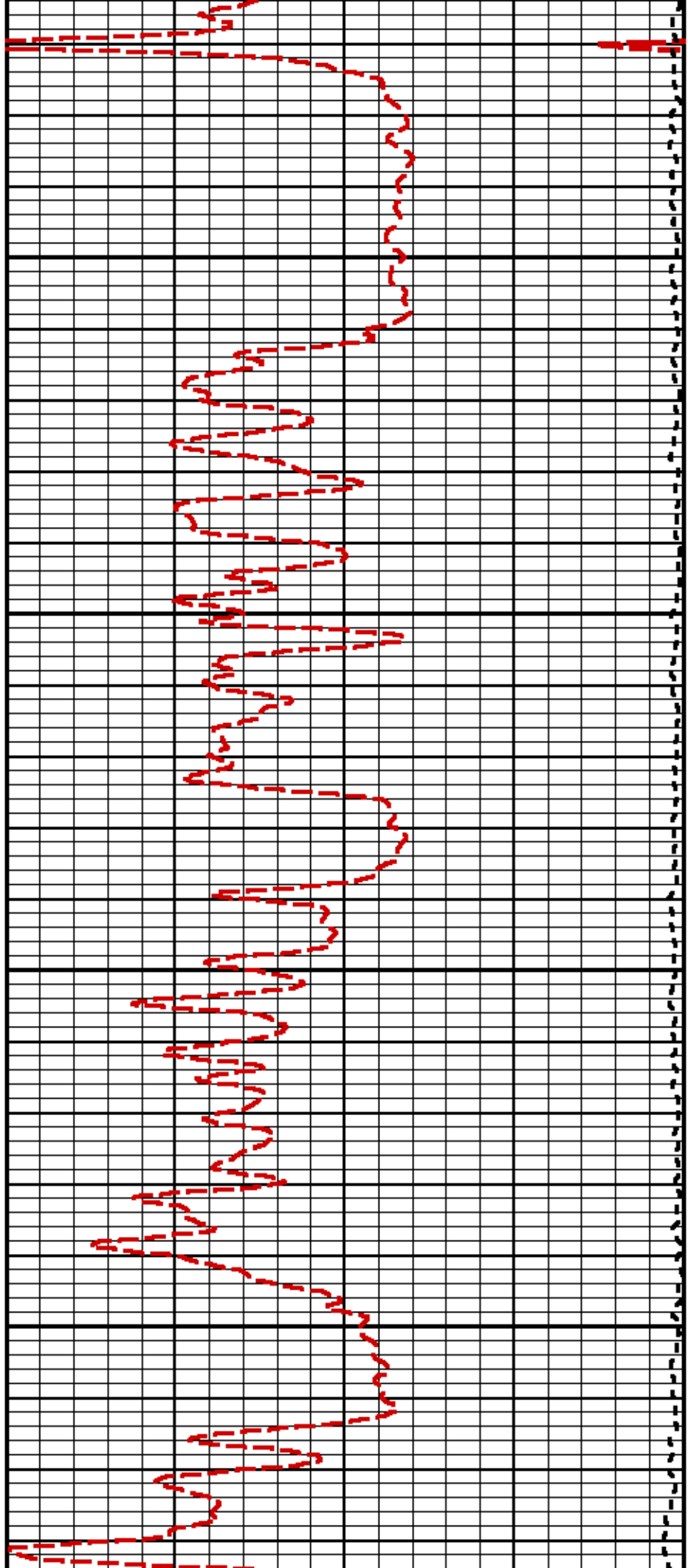
8300

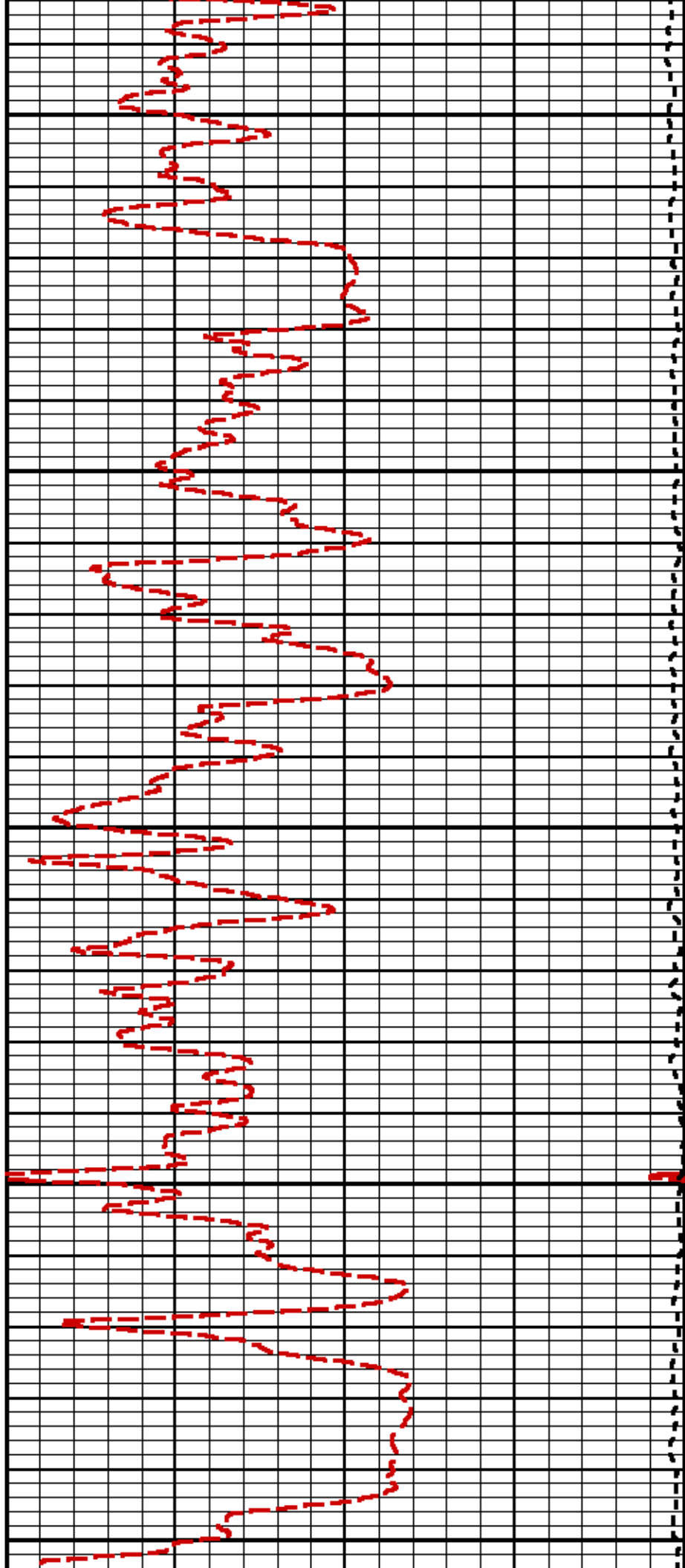
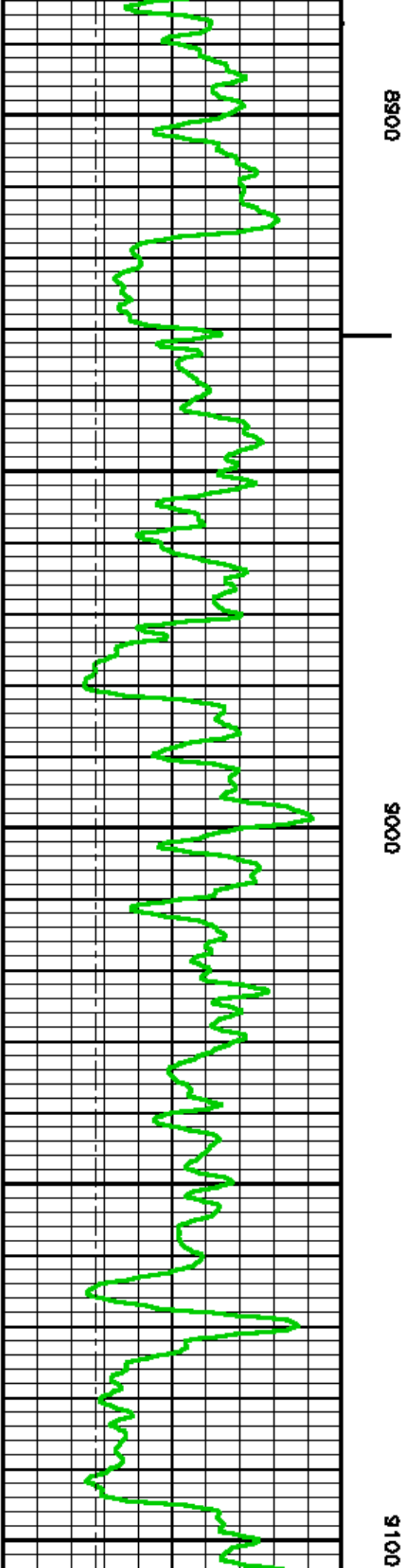
8400

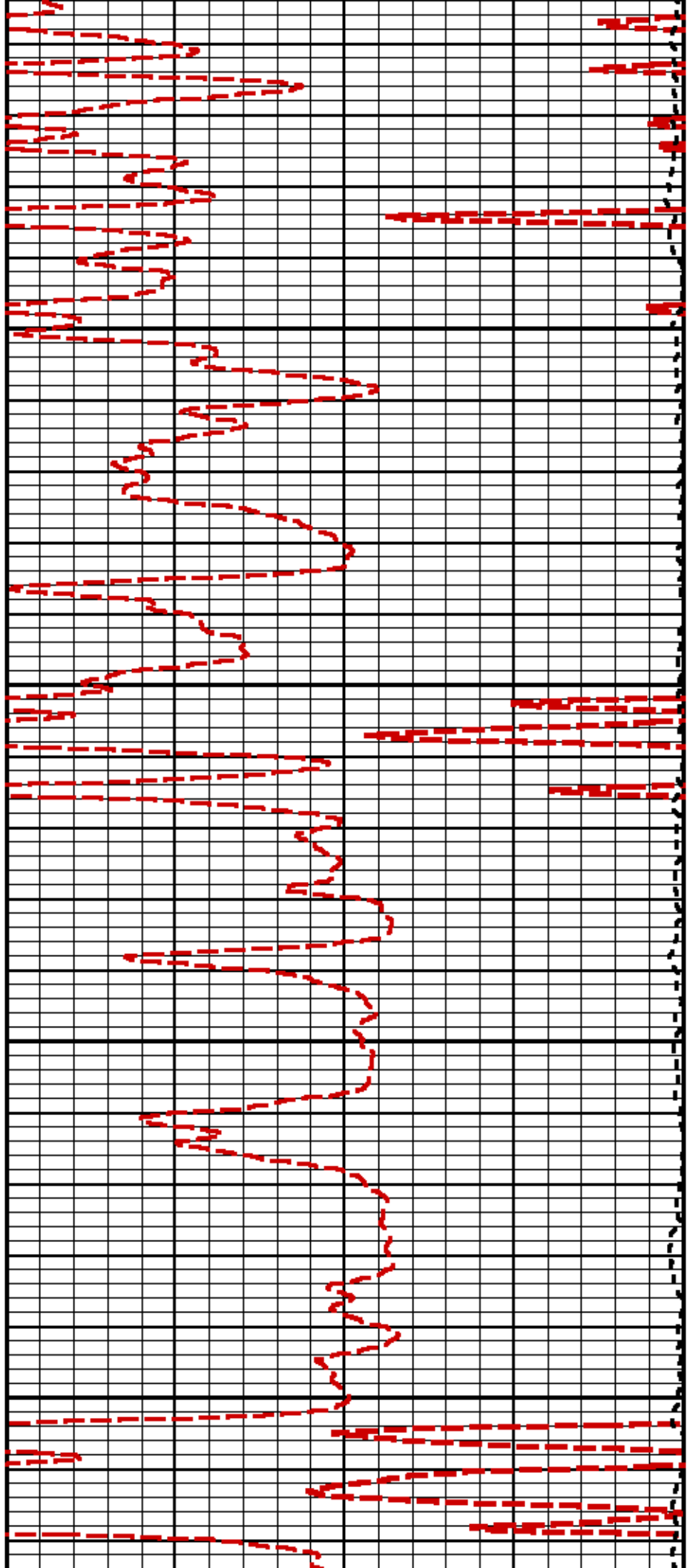






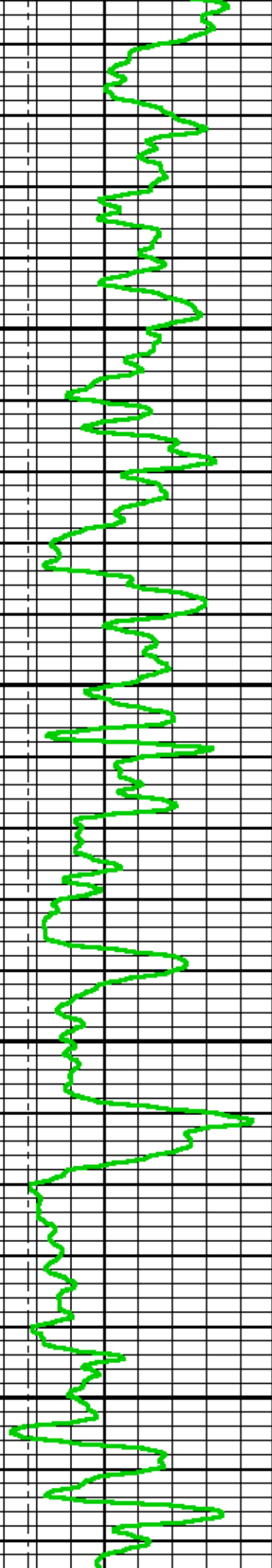


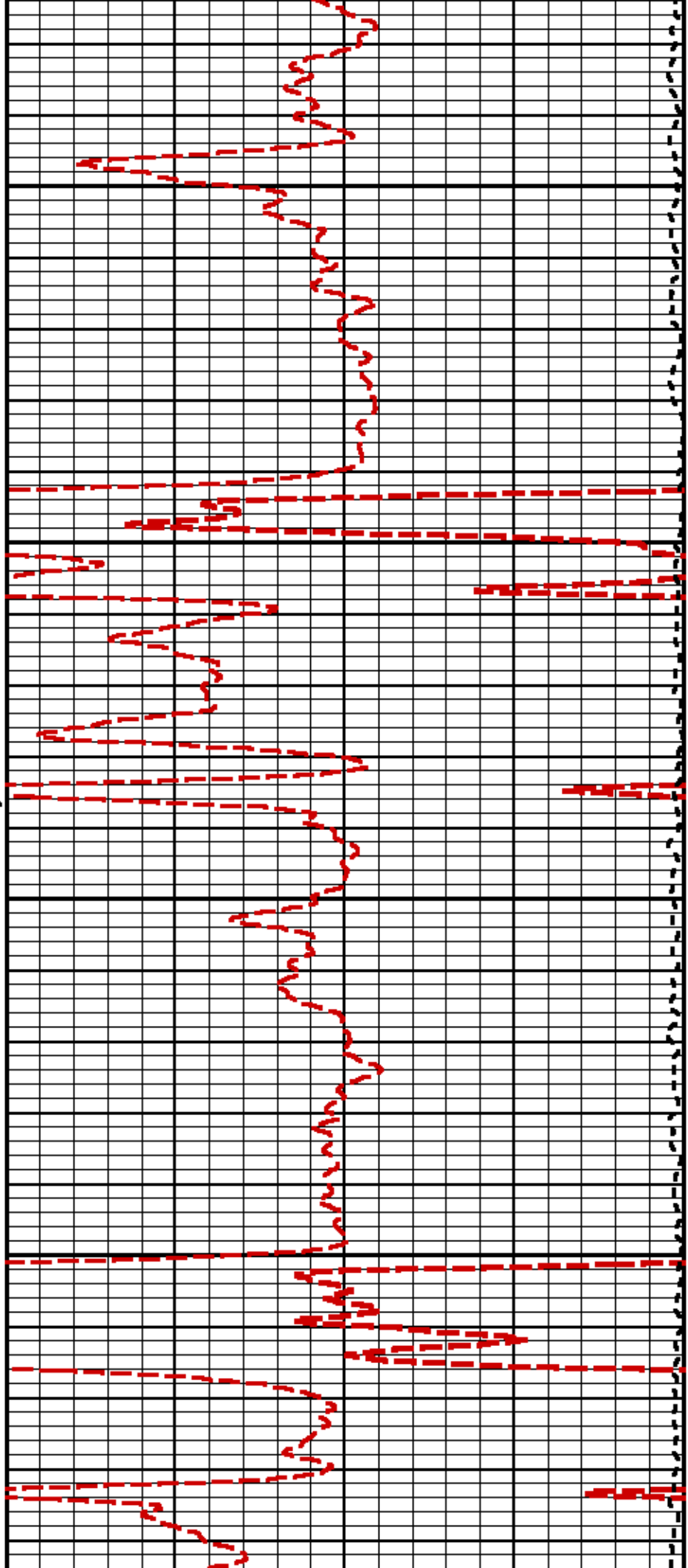




9200

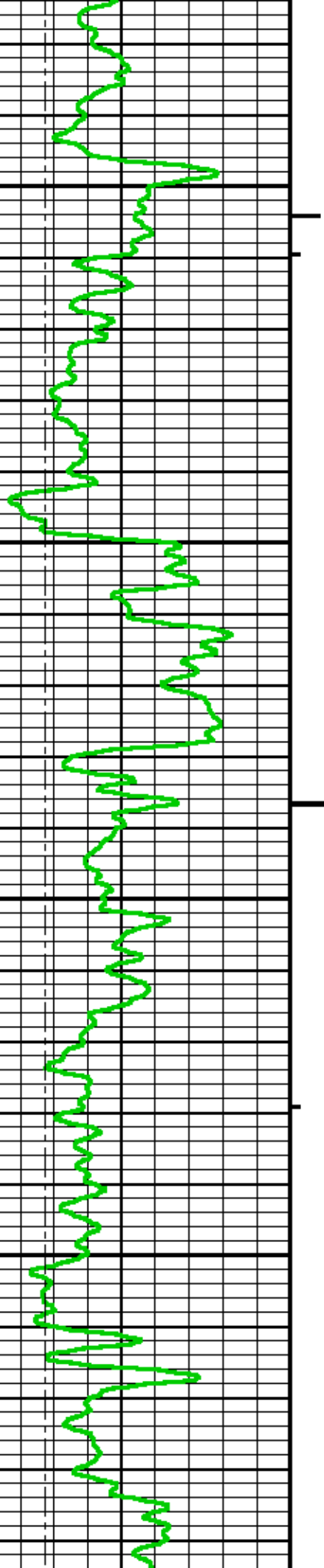
9300

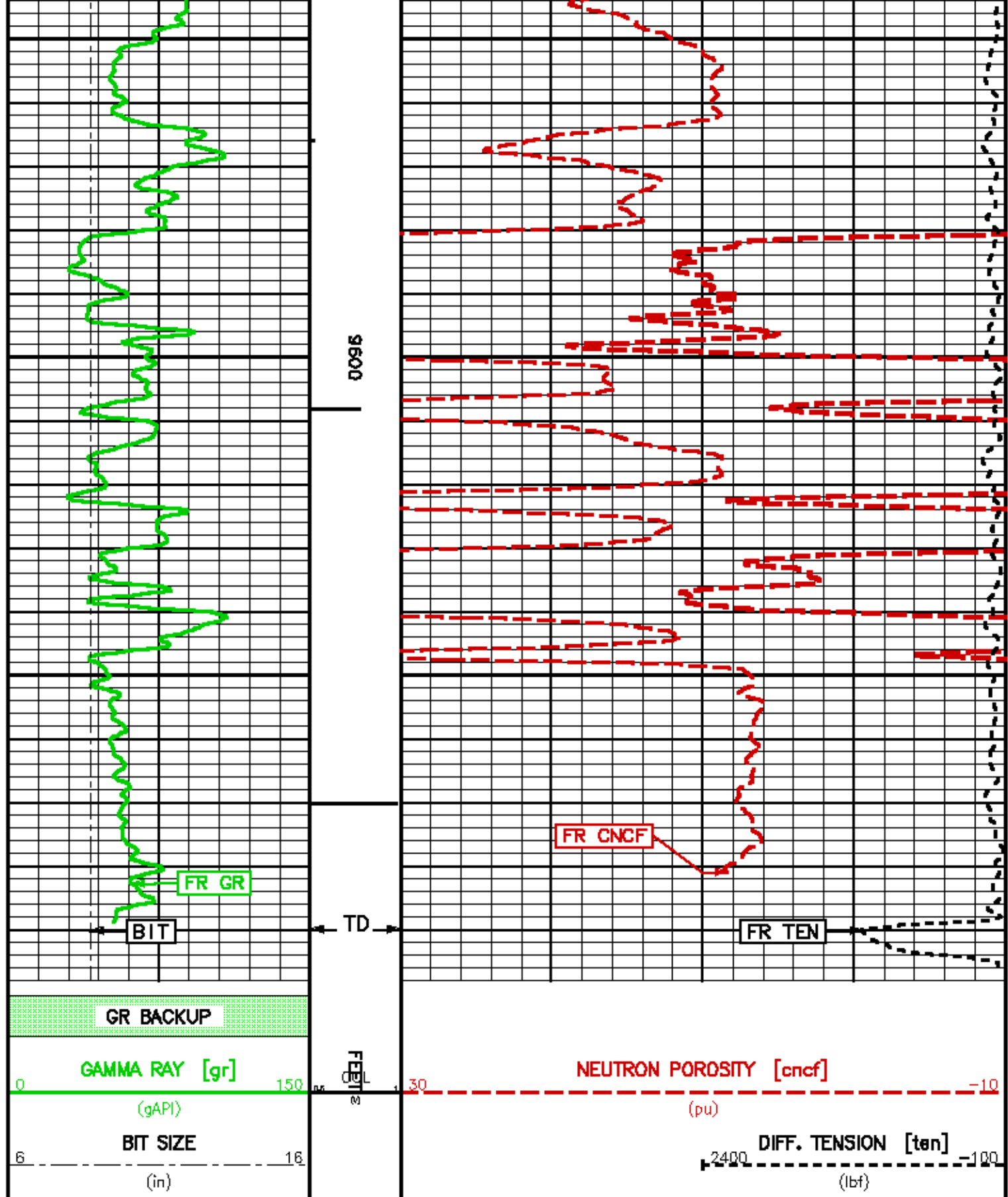




9400

9500





REPEAT LOG 5"/100FT SCALE

## PARAMETER AND FILTER SUMMARY REPORT

FILE: /data/1627/k870alc02.prm  
 LOGGING MODE: DEPTH DIRECTION: UP  
 TOP DEPTH: 8379.750 ft BOTTOM DEPTH: 9697.965 ft

### SYMMETRIC FILTER

| MEASUREMENT TYPE | PARAMETER   | VALUE      | UNITS | INTERVAL (ft) |        |
|------------------|-------------|------------|-------|---------------|--------|
| GR LOW RES       | FILTER (.1) | medium (1) |       | TOP           | BOTTOM |
| GR MED RES       | FILTER ()   | medium (1) |       | ''            | ''     |
| TENSION          | FILTER ()   | medium (1) |       | ''            | ''     |
| CN LOW RES       | FILTER (.1) | medium (1) |       | ''            | ''     |
| CN MED RES       | FILTER ()   | medium (1) |       | ''            | ''     |

### BOREHOLE & CEMENT

| MEASUREMENT TYPE                  | PARAMETER                  | VALUE          | UNITS | INTERVAL (ft) |        |
|-----------------------------------|----------------------------|----------------|-------|---------------|--------|
| CASING - BOREHOLE & CEMENT VOLUME | CASING O.D.                | 4.500          | 1in   | TOP           | BOTTOM |
|                                   | CASING THICKNESS           | 0.250          | 1in   | ''            | ''     |
| BIT SIZE                          | BIT SIZE                   | 8.750          | 1in   | ''            | ''     |
| BOREHOLE CORR DIAMETER SOURCE     | CALIPER/FIXED DIA. (cnbh*) | USE FIXED SIZE |       | ''            | ''     |
| BOREHOLE CORR DIAMETER            | FIXED DIAMETER (cnbh*)     | 8.750          | 1in   | ''            | ''     |

### ACCELERATION PROCESSING

| MEASUREMENT TYPE  | PARAMETER        | VALUE         | UNITS | INTERVAL (ft) |        |
|-------------------|------------------|---------------|-------|---------------|--------|
| ACCEL CORR SWITCH | ACCEL DEPTH CORR | CORRECTION ON |       | TOP           | BOTTOM |

### CN PROCESSING

| MEASUREMENT TYPE              | PARAMETER            | VALUE     | UNITS | INTERVAL (ft) |        |
|-------------------------------|----------------------|-----------|-------|---------------|--------|
| CN MATRIX                     | 2436 MATRIX          | SANDSTONE |       | TOP           | BOTTOM |
| CN BOREHOLE CORRECTION        | SALINITY             | 881       | ppm   | ''            | ''     |
|                               | BOREHOLE CORRECTION  | ON        |       | ''            | ''     |
| CN CASING & CEMENT CORRECTION | CORRECTION           | ON        |       | ''            | ''     |
|                               | BIT SIZE BEHIND CSNG | 8.750     | 1in   | ''            | ''     |

### CURVE DESCRIPTION REPORT

| CURVE NAME | CURVE ALIAS | CREATION DATE        | CURVE DESCRIPTION                             |
|------------|-------------|----------------------|---|
| F1:BIT     | BIT         | Feb 11 09:57:45 2010 | BIT SIZE                                      |
| F1:CCL     | CCL         | Feb 11 09:57:45 2010 | CASING COLLAR LOCATOR                         |
| F1:CNCF    | CNCF        | Feb 11 09:57:45 2010 | FIELD NORMALIZED COMPENSATED NEUTRON POROSITY |
| F1:GR      | GR          | Feb 11 09:57:45 2010 | GAMMA RAY                                     |
| F1:TEN     | TEN         | Feb 11 09:57:45 2010 | DIFFERENTIAL TENSION                          |

### CURVE MEASURE POINT OFFSET

| CURVE | OFFSET (ft) | CURVE | OFFSET (ft) | CURVE | OFFSET (ft) | CURVE | OFFSET (ft) |
|-------|-------------|-------|-------------|-------|-------------|-------|-------------|
| BIT   | 0.00        | CNCF  | 1.50        | TEN   | 0.00        |       |             |
| CCL   | 18.00       | GR    | 7.50        |       |             |       |             |

Presentation : cpu1scn\_repeat.pdf [5"/100" Scale]  
 Plot Interval : 8379.25 - 9701.75 Feet

Data File 1 : F1 : cpu1scn\_repeat.pdf [5"/100" Scale]  
 Created On : Feb 11 09:57:45 2010  
 Company : MARATHON OIL COMPANY  
 Well : 598-28C-12  
 Field : GRAND VALLEY  
 File Interval : 0 - 9703 Feet  
 Oct : k870alc

## GR BACKUP

GAMMA RAY [gr]

0

150

(gAPI)

BIT SIZE

6

16

(in)

FEET

CCL

0

9400

9500

NEUTRON POROSITY [cnof]

30

-10

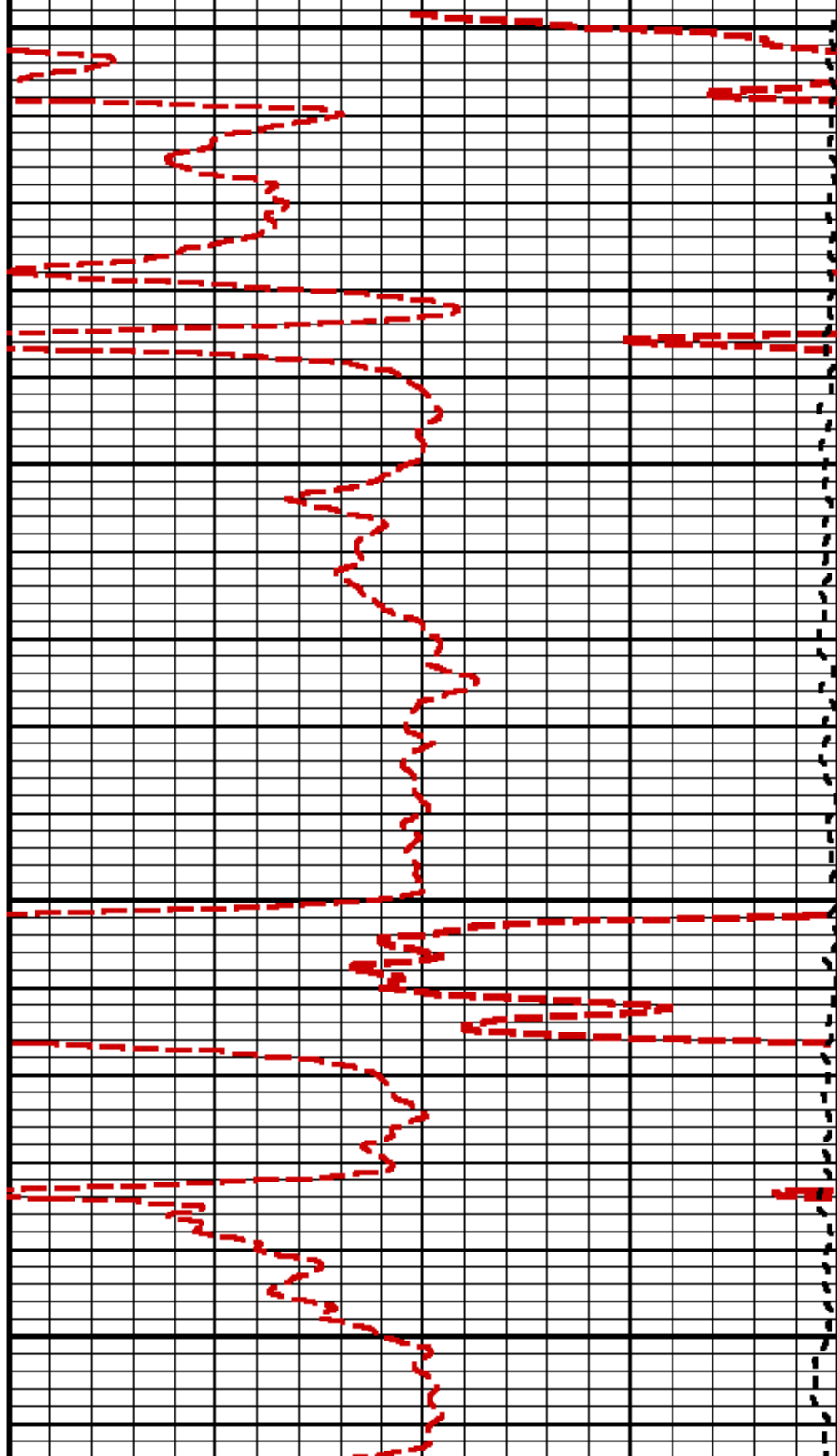
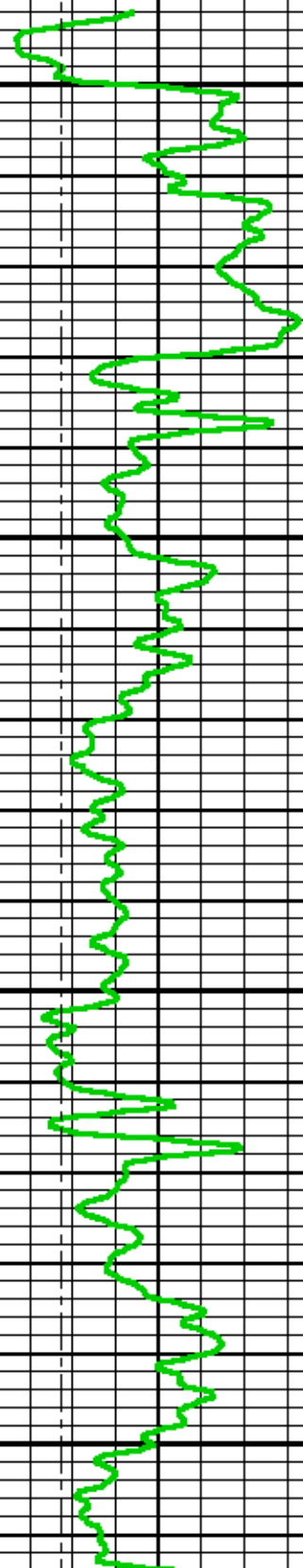
(pu)

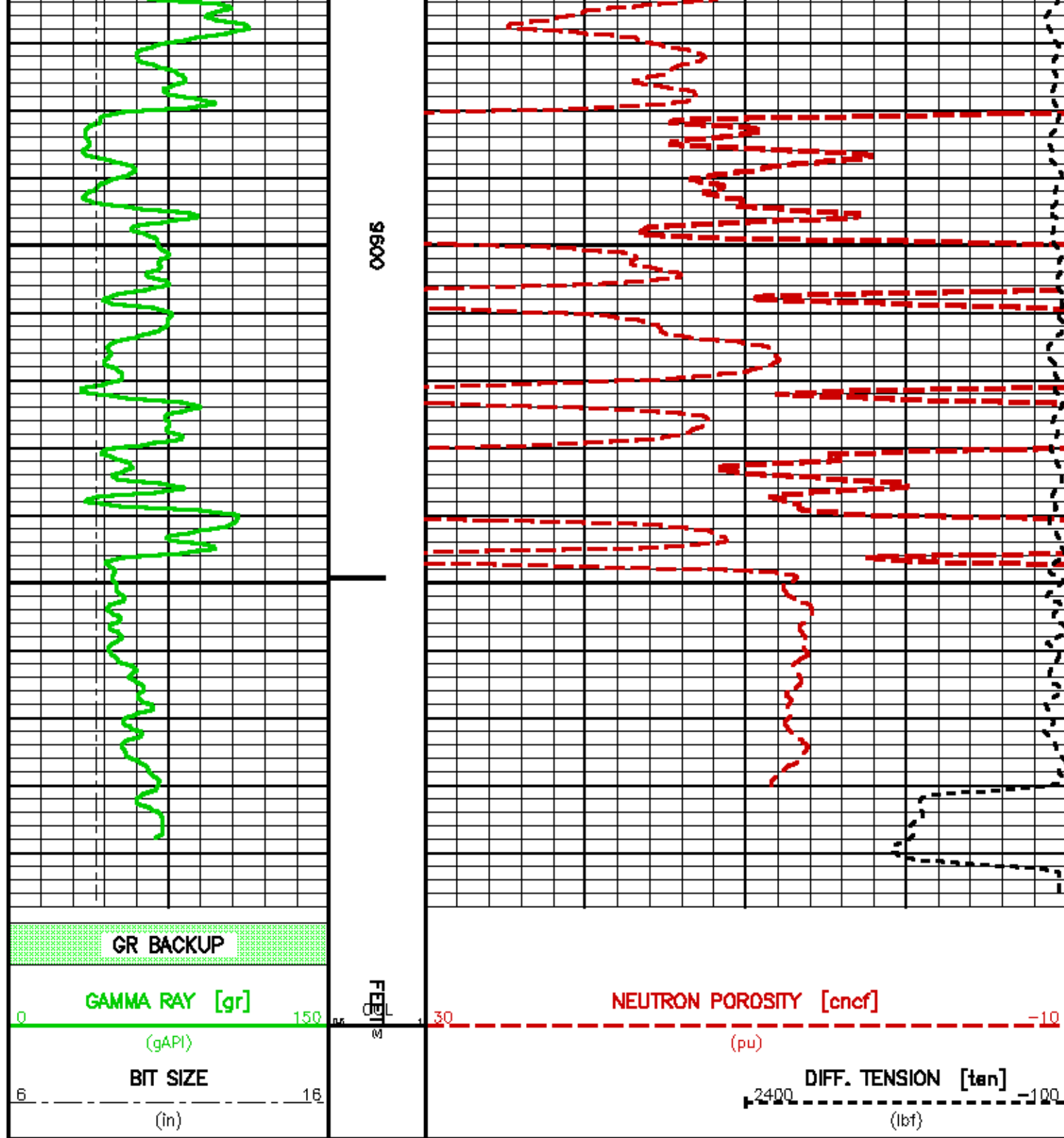
DIFF. TENSION [ten]

2400

-100

(lbf)





## CALIBRATION / VERIFICATION SUMMARY

Source File: /data/10/1027/102700101

### TTMA PRIMARY CALIBRATION SUMMARY

TOOL #: 3960XA 10380720

DATE/TIME PERFORMED: Wed Oct 8 08:07:05 2008

UNIT #: 3862TD HL6670

ACCEL #: 3960XA 10380720

ACCEL CAL DATE: 13:54 07/16/2007

GAIN

OFFSET

(ohm-m)



## TTMA BEFORE LOG VERIFICATION SUMMARY

TOOL #: 3980XA 10380720 DATE/TIME PERFORMED: Thu Feb 11 09:12:57 2010 DAYS SINCE CAL: 491

UNIT #: 3882TD HL6670

|      | CHT<br>(lbf)  | MUD TEMP<br>(degF) | RES M Q<br>(ohm) | ACCEL Q          |
|------|---------------|--------------------|------------------|------------------|
| CAL  | 19157         | 499.71             | 9.99             | 1001.58          |
|      | 18340 19940   | 491.00 505.40      | 8.00 14.00       | 980.00 1020.00   |
| ZERO | -24112        | -436.02            | 0.250            | 1000.661         |
|      | -24818 -23318 | -443.80 -428.80    | 0.300 0.300      | 980.000 1020.000 |

## TTMA AFTER LOG VERIFICATION SUMMARY

TOOL #: 3980XA 10380720 DATE/TIME PERFORMED: Thu Feb 11 11:26:11 2010 DAYS SINCE CAL: 491

UNIT #: 3882TD HL6670

|      | CHT<br>(lbf)  | MUD TEMP<br>(degF) | RES M Q<br>(ohm) | ACCEL Q          |
|------|---------------|--------------------|------------------|------------------|
| CAL  | 19114         | 498.98             | 10.00            | 998.59           |
|      | 18340 19940   | 491.00 505.40      | 8.00 14.00       | 980.00 1020.00   |
| ZERO | -24112        | -436.02            | 0.250            | 1000.059         |
|      | -24818 -23318 | -443.80 -428.80    | 0.300 0.300      | 980.000 1020.000 |

## GR PRIMARY CALIBRATION SUMMARY

Tool #: 3518XG 10081345

DATE/TIME PERFORMED: Mon Feb 8 15:29:59 2010

Unit #: 3882TD HL6670

Jig Series: 4702NK DA-321

| Background | Calibrator ON | Jig Value<br>(gAPI) | Mult        | Background<br>(gAPI) | Calibrator ON<br>(gAPI) |
|------------|---------------|---------------------|-------------|----------------------|-------------------------|
| 129.56     | 650.74        | 183                 | 0.257       | 33.23                | 215.23                  |
|            |               |                     | 0.250 0.260 |                      |                         |

## GR BEFORE LOG VERIFICATION SUMMARY

TOOL #: 3518XG 10081345 DATE/TIME PERFORMED: Thu Feb 11 09:13:01 2010 DAYS SINCE CAL: 2

UNIT #: 3882TD HL6670 Jig: INTRNL N/A

| Counts         | TEMP<br>(degF) | HV<br>(V)       |
|----------------|----------------|-----------------|
| 976.67         | 25.78          | 1361.74         |
| 928.00 1027.00 | 539.00         | 1237.00 1512.00 |

## GR AFTER LOG VERIFICATION SUMMARY

TOOL #: 3518XG 10081345 DATE/TIME PERFORMED: Thu Feb 11 11:26:20 2010 DAYS SINCE CAL: 2

UNIT #: 3882TD HL6670 Jig: INTRNL N/A

| Counts         | TEMP<br>(degF) | HV<br>(V)       |
|----------------|----------------|-----------------|
| 976.33         | 130.95         | 1369.13         |
| 928.00 1027.00 | 639.00         | 1237.00 1512.00 |

## CN PRIMARY CALIBRATION SUMMARY

TOOL #: 2436XA 10124366

DATE/TIME PERFORMED: Mon Feb 8 15:57:04 2010

UNIT #: 3882TD HL6670

CALIBRATOR #: 2437XB 112674

SOURCE #: 4718XA ON-B97

| SSN<br>DT CPS | LSN<br>DT CPS | SSN/LSN | MCF             | CNRATIO | CN<br>PU |
|---------------|---------------|---------|-----------------|---------|----------|
| 4611.90       | 804.96        | 5.72937 | 1.00133         | 5.73700 | 25.241   |
|               |               |         | 0.95000 1.05000 |         |          |

## CN BEFORE LOG VERIFICATION SUMMARY

TOOL #: 2436XA 10124366 DATE/TIME PERFORMED: Thu Feb 11 09:13:06 2010 DAYS SINCE CAL: 2

UNIT #: 3882TD HL6670 CALIBRATOR #: INTRNL N/A

SSN LSN SSN/LSN TEMP HV LV

| DT CPS | DT CPS | (degF)          | (V)   | (V)           |
|--------|--------|-----------------|-------|---------------|
| 992.41 | 994.44 | 0.99797         | 23.8  | 1368.8        |
|        |        | 0.85000 1.05000 | 280.4 | 1450.0 1450.0 |
|        |        |                 |       | 4.500 5.000   |

## CN AFTER LOG VERIFICATION SUMMARY

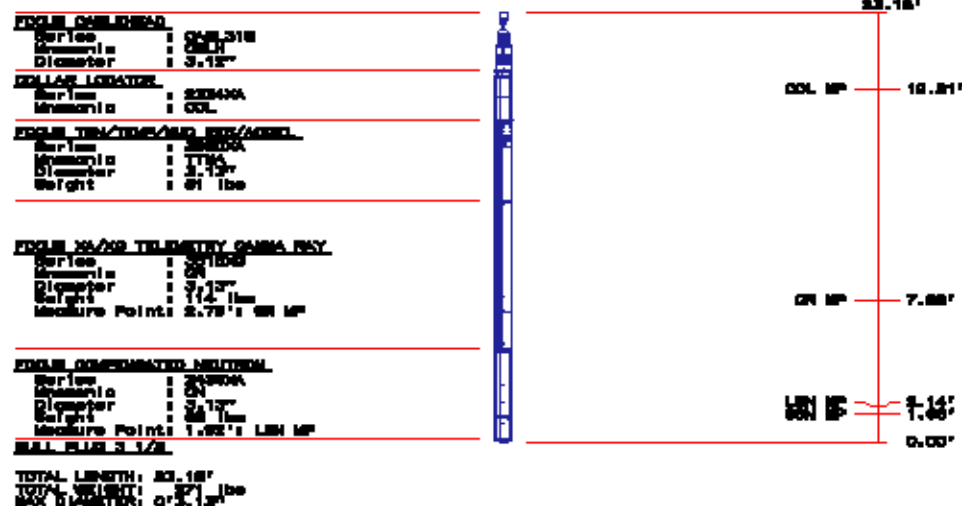
TOOL #: 2438XA 10124368 DATE/TIME PERFORMED: Thu Feb 11 11:26:24 2010 DAYS SINCE CAL: 2

UNIT #: 3682TD HL6670 CALIBRATOR #: INTRNL N/A

| SSN<br>DT CPS | LSN<br>DT CPS | SSN/LSN         | TEMP<br>(degF) | HV<br>(V)     | LV<br>(V)   |
|---------------|---------------|-----------------|----------------|---------------|-------------|
| 992.08        | 994.10        | 0.99797         | 144.3          | 1369.8        | 4.599       |
|               |               | 0.85000 1.05000 | 280.4          | 1450.0 1450.0 | 4.500 5.000 |

## INSTRUMENT CONFIGURATION

Source File: c:\data\1828\1828data1-his



COMPANY: MARATHON OIL COMPANY  
WELL: 596-29C-12  
FIELD: GRAND VALLEY  
COUNTY: GARFIELD STATE: COLORADO

FILE NO: 1828  
API NO: 05045180900000

LOCATION:  
SHL: 1761' FSL & 1368' FWL  
SEC: 28 TWP: 55 RGE: 96W

ELEVATIONS:  
KB: 8204 FT  
DF: 8203 FT  
GL: 8180 FT  
DATE: 11-Feb-2010

PAD: 697-29C

Baker Atlas

