



SUPERIOR
Black Lick, Pa.
Mercer, Pa.
Wooster, Oh.
Cleveland, Ok.
Trinidad, Co.

CEMENT BOND GAMMA RAY

Company Pioneer Natural Resources

Well Maximus 12-2

Field Purgatorie River

County Las Animas State CO

Location: API # : 05 071 09685 00

1834' FNL & 522' FWL

SEC 2 TWP 33S RGE 68W

Permanent Datum Ground Level Elevation 7920'
Log Measured From Kelly Bushing 4' Above G.L.
Drilling Measured From Kelly Bushing

Elevation
K.B. 7924'
D.F. -----
G.L. 7920'

Company Pioneer Natural Resources
Well Maximus 12-2
Field Purgatorie River
County Las Animas
State CO

Date 1/9/09

Run Number Two

Depth Driller 2440'

Depth Logger 2377'

Bottom Logged Interval 2373'

Top Log Interval Surf.

Open Hole Size 7 7/8"

Type Fluid water

Density / Viscosity ///

Max. Recorded Temp. 114F

Estimated Cement Top 60'

Time Well Ready ROA

Time Logger on Bottom 9-20

Equipment Number 0996

Location Trinidad

Recorded By Armijo

Witnessed By Morley

Run Number

Bit From To

Size

Weight

From To

Size

Weight

From To

Size

Weight

From To

<<< Fold Here >>>

All interpretations are opinions based on inferences from electrical or other measurements and we cannot and do not guarantee the accuracy or correctness of any interpretation, and we shall not, except in the case of gross or willful negligence on our part, be liable or responsible for any loss, costs, damages, or expenses incurred or sustained by anyone resulting from any interpretation made by any of our officers, agents or employees. These interpretations are also subject to our general terms and conditions set out in our current Price Schedule.

Comments

Wet Canyon to Hicks School, take left, take third right, drive thru the Julian location, next left, go thru gate, at Y go right, drive thru the Mule Herder, go thru double green gates, go left, at Y go left, next Y go right, at Y stay right, go thru double green gates, at Y stay left, go down hill thru double green gates, stay on main road past wooden wall past old cabin, at Y stay right, stay on main road, at Y stay right up switchbacks, at top stay left, dead end on location.

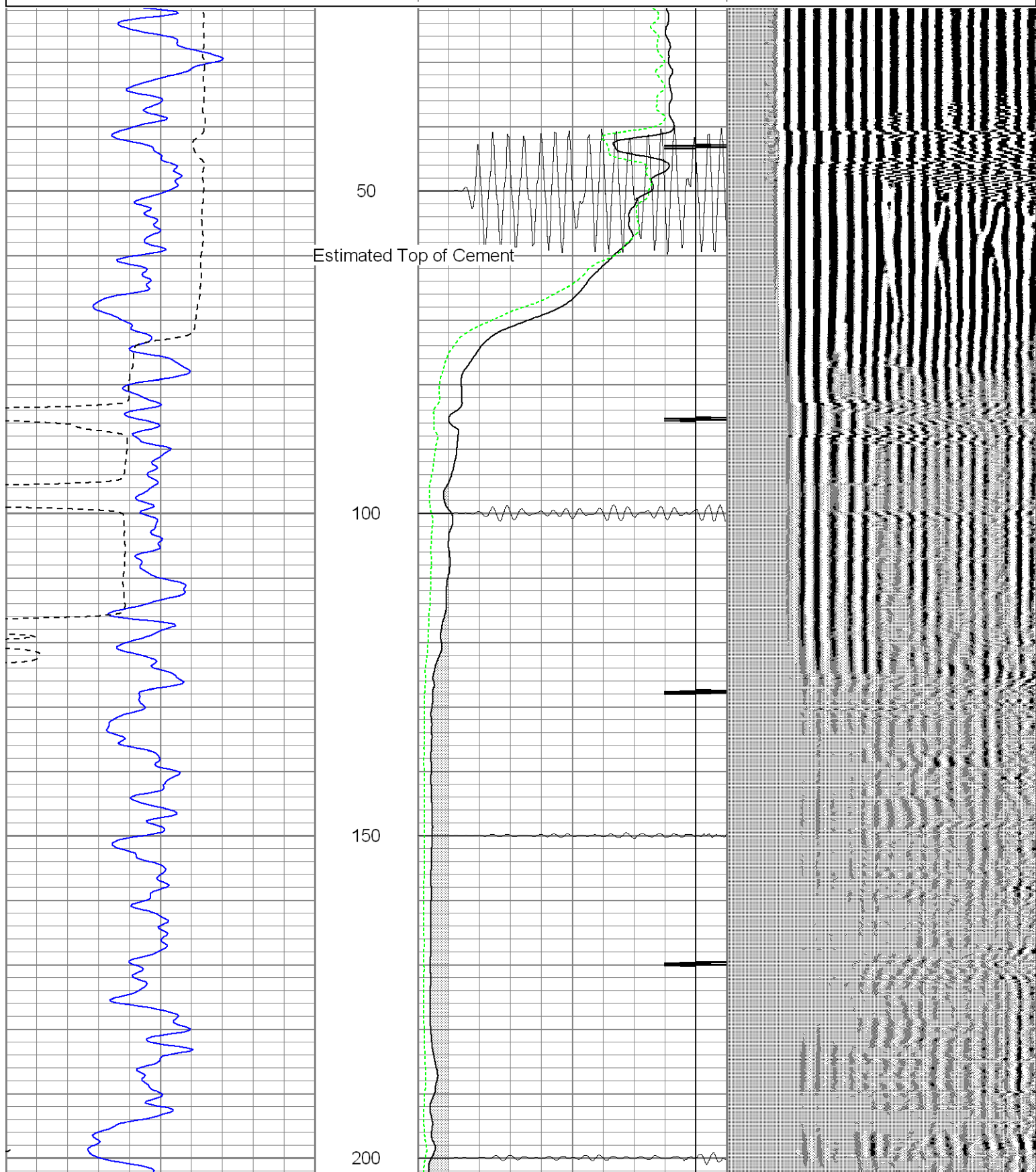


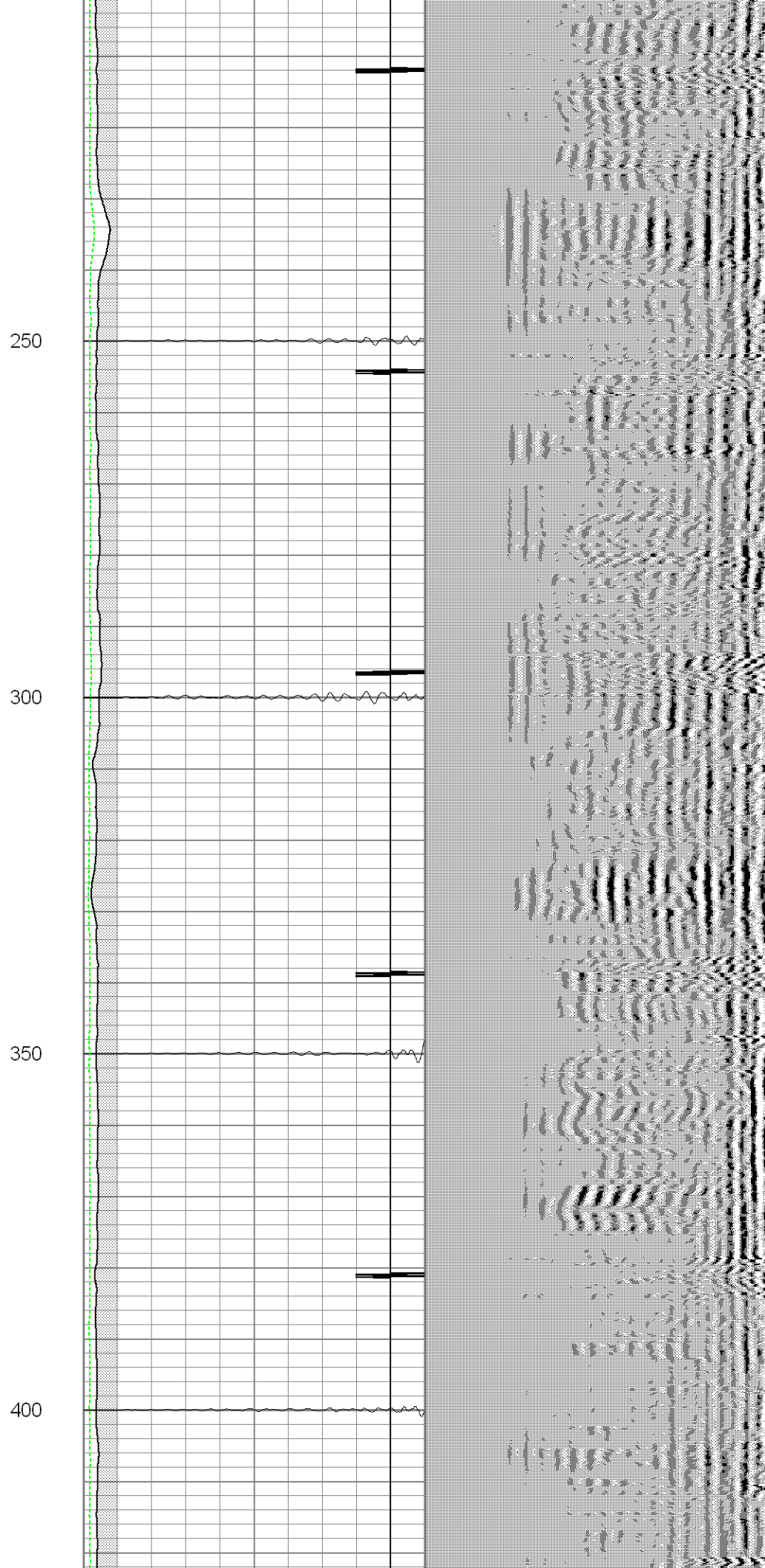
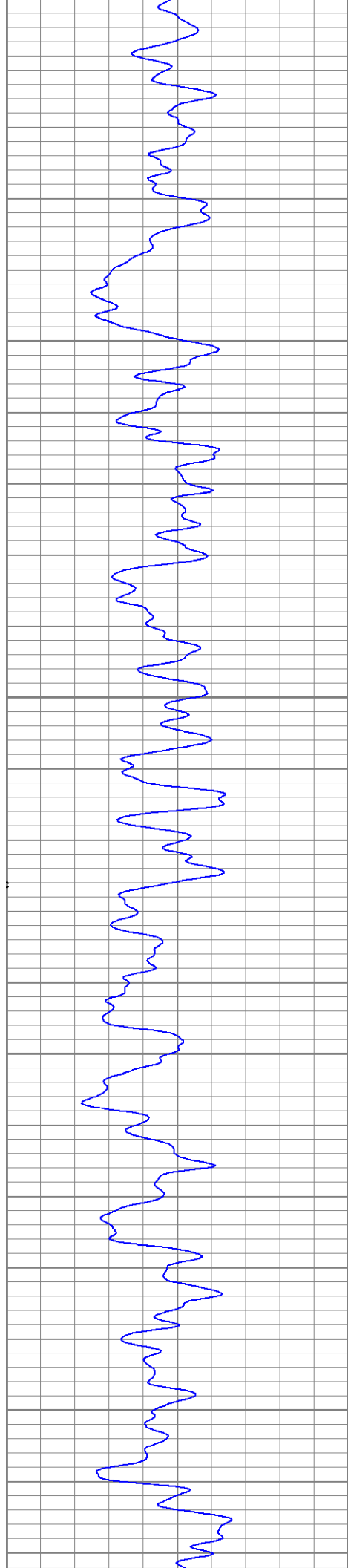
SUPERIOR
Black Lick, Pa.
Mercer, Pa.
Wooster, Oh.
Cleveland, Ok.
Trinidad, Co.

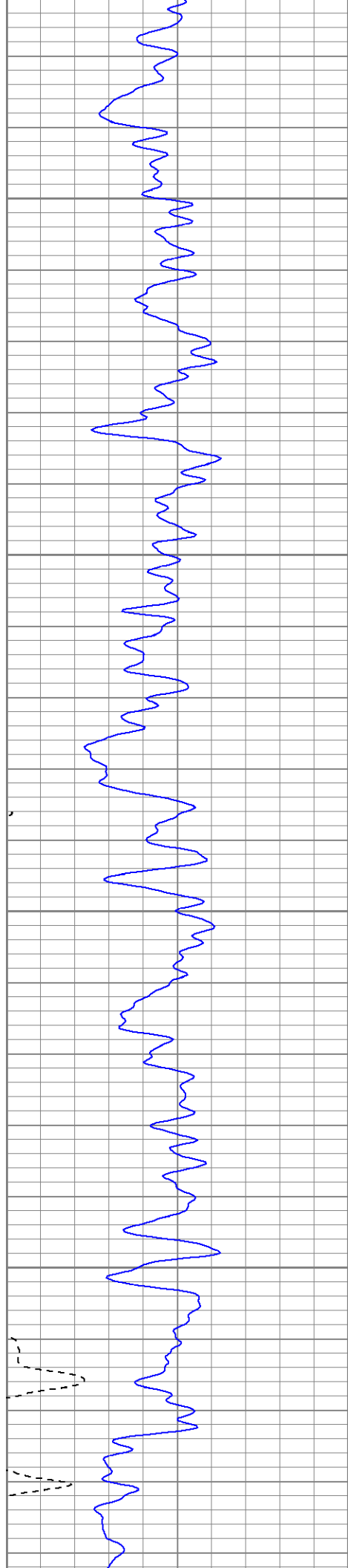
Main Pass

Database File: maximus010909b.db
Dataset Pathname: pass3.1
Presentation Format: cblrtd
Dataset Creation: Fri Jan 09 13:02:10 2009 by Calc Open-Cased 071220
Charted by: Depth in Feet scaled 1:240

0	GR (GAPI)	200	0	AMP3 (mV)	100	200	Variable Density	1200
400	TT3 (usec)	200	18	CCL	-2			
			200	CBL5	1200			
			0	AMP5 (mV)	100			





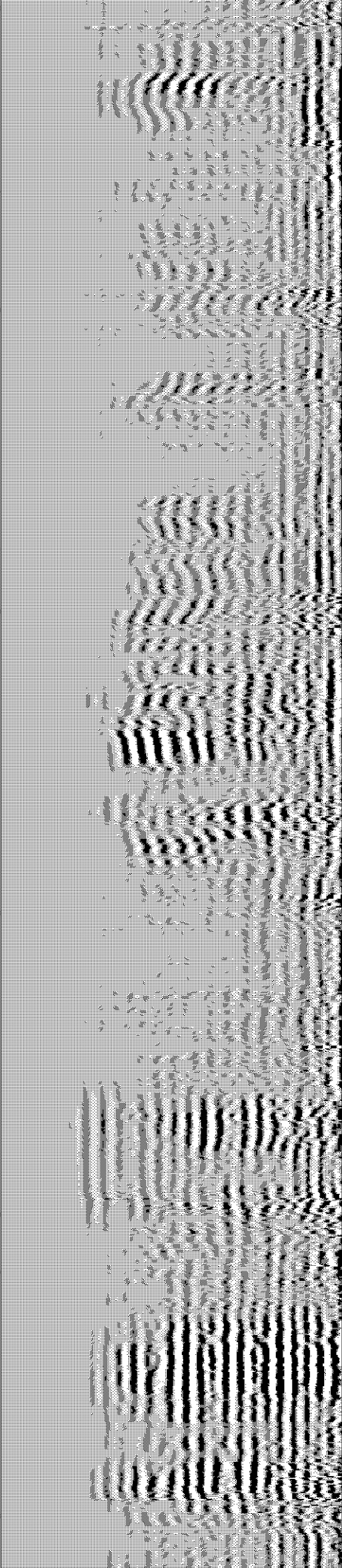
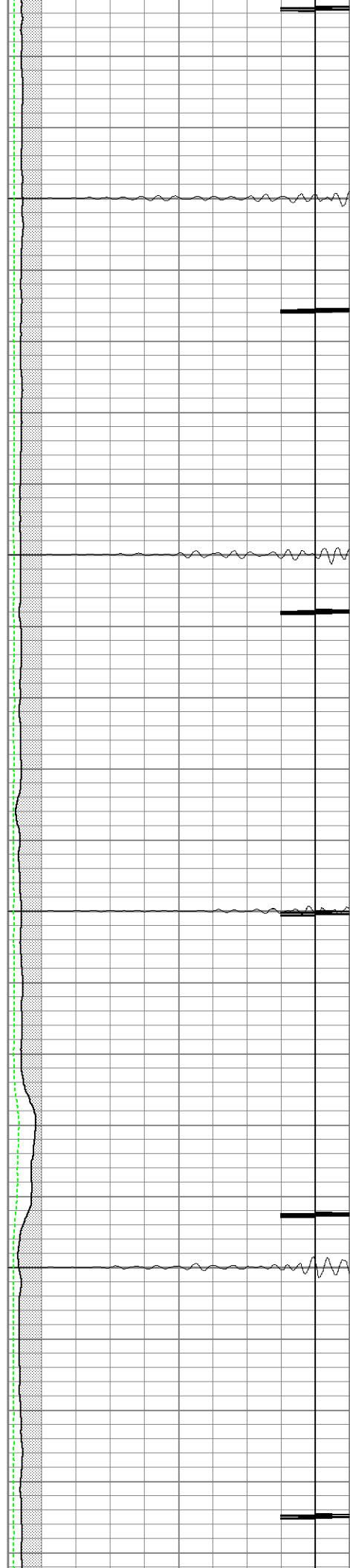


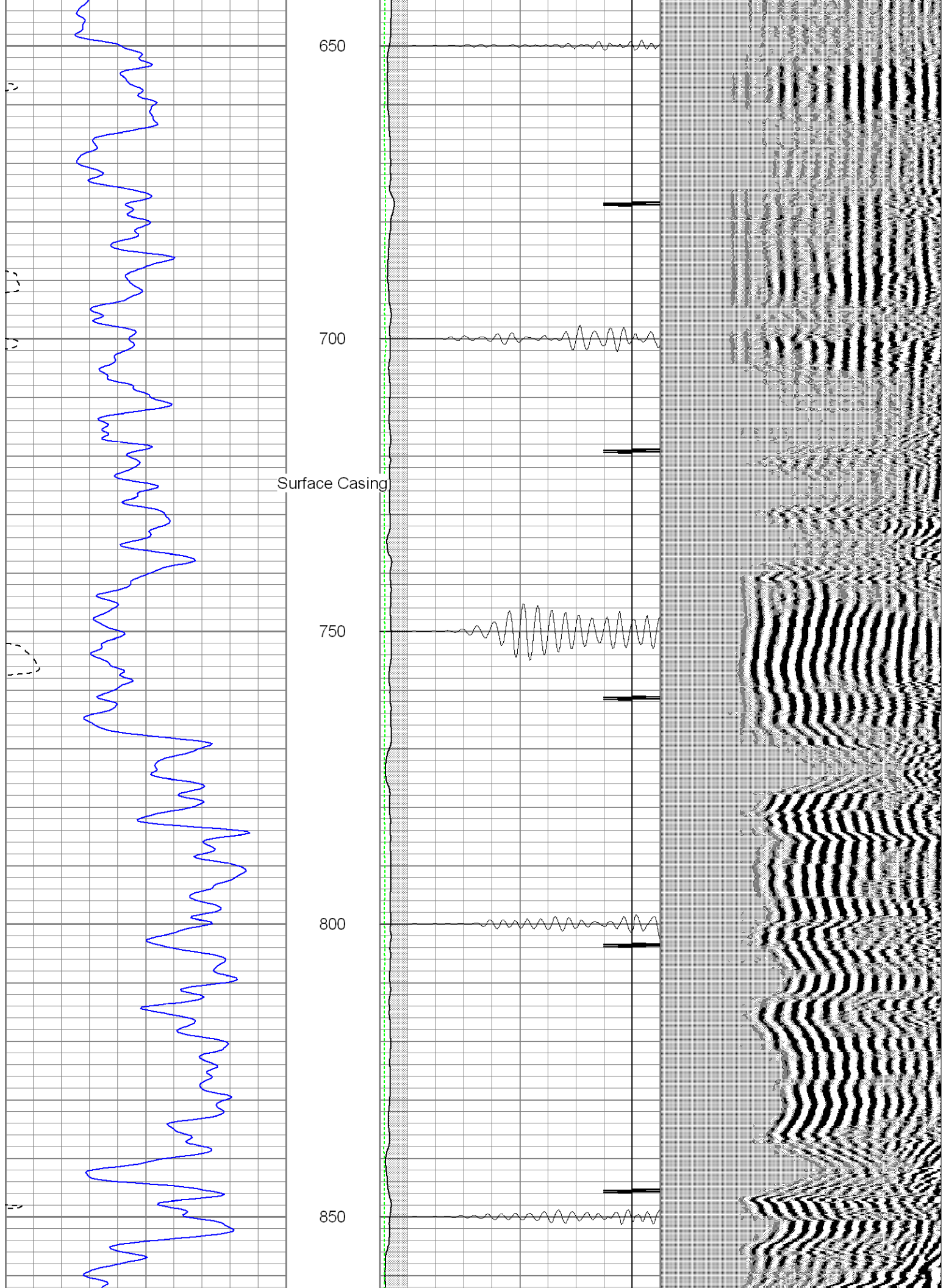
450

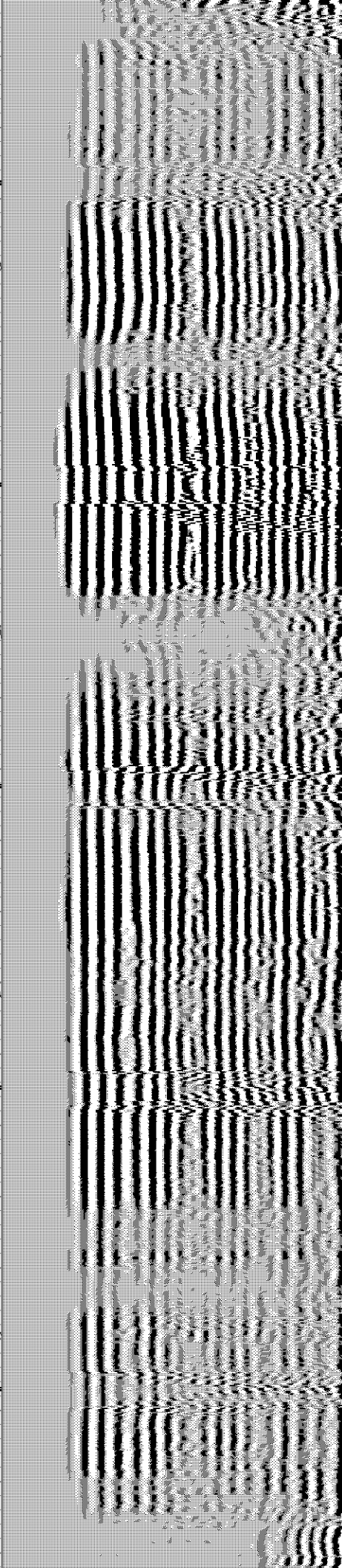
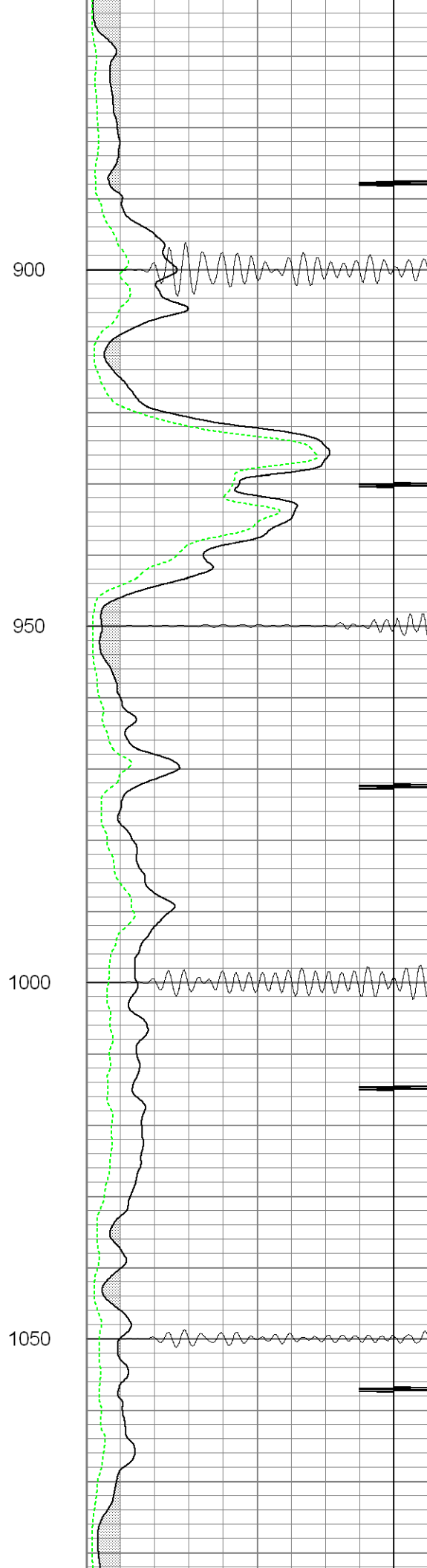
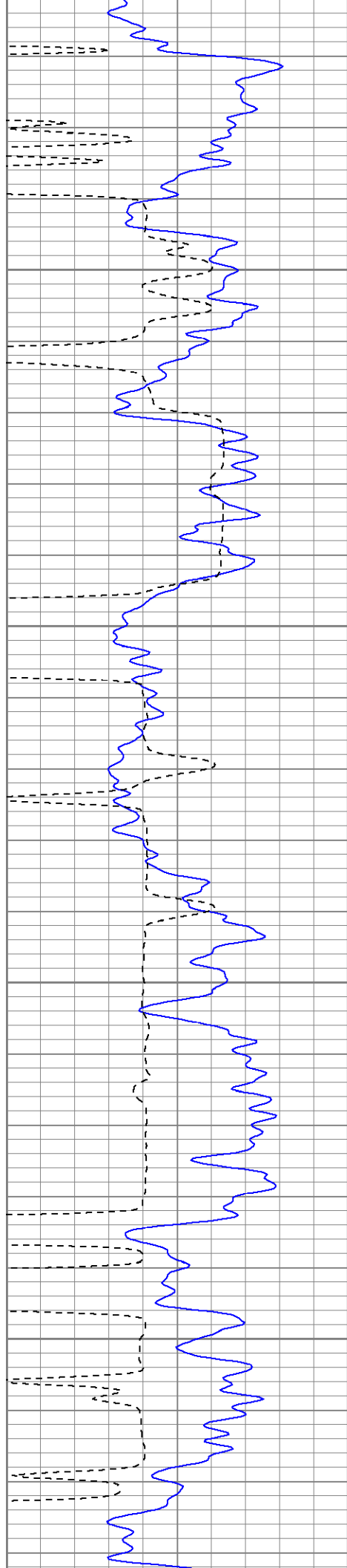
500

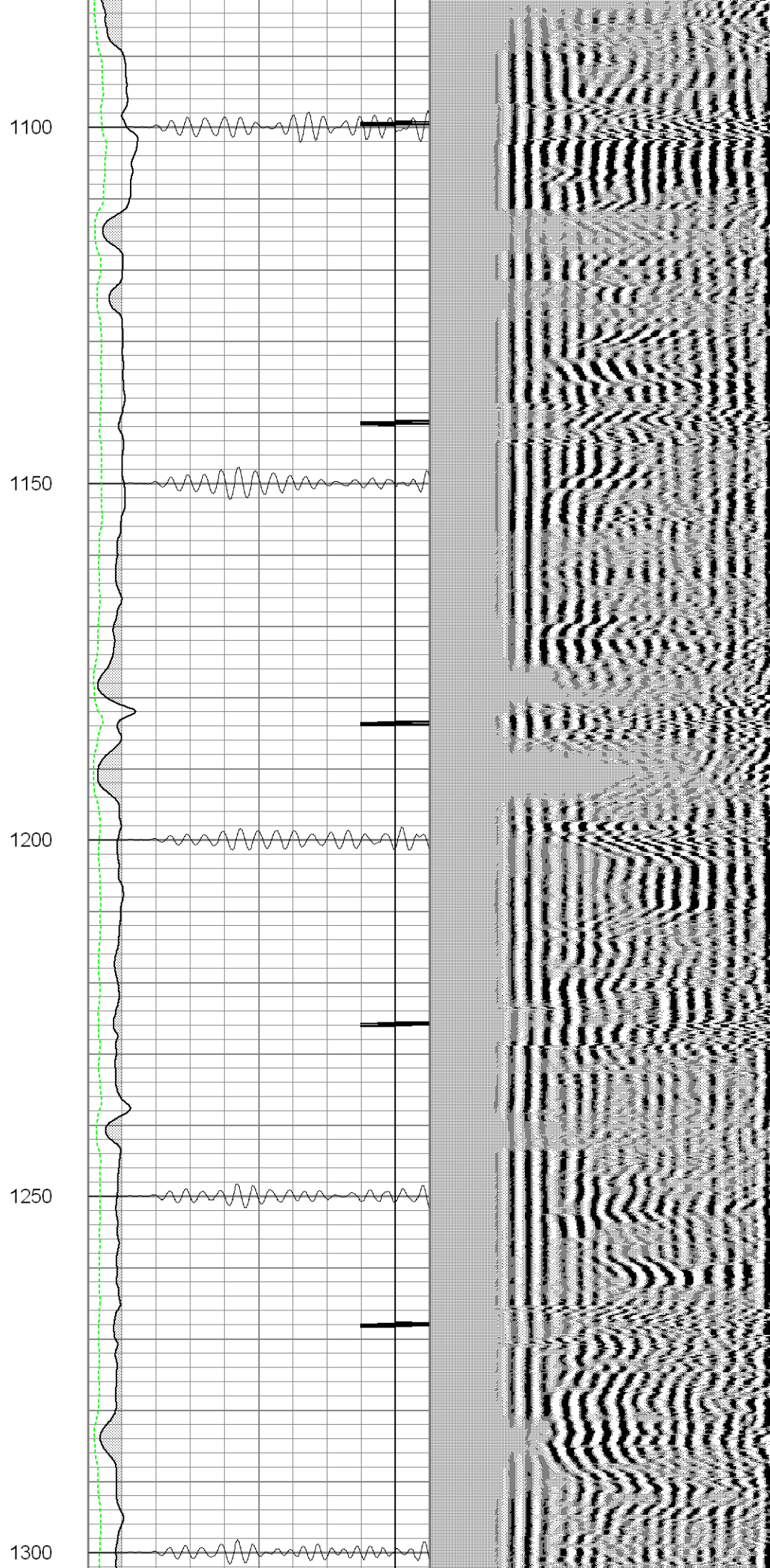
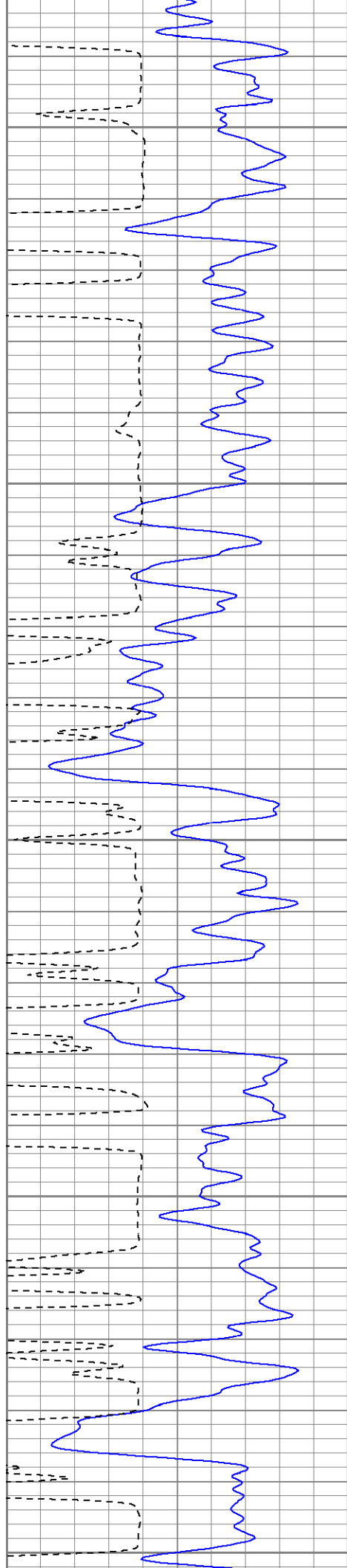
550

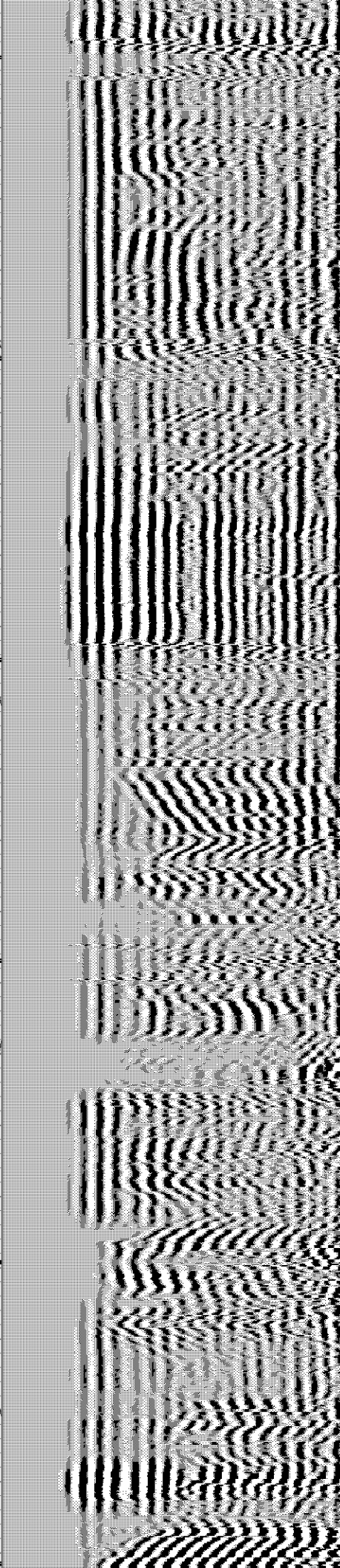
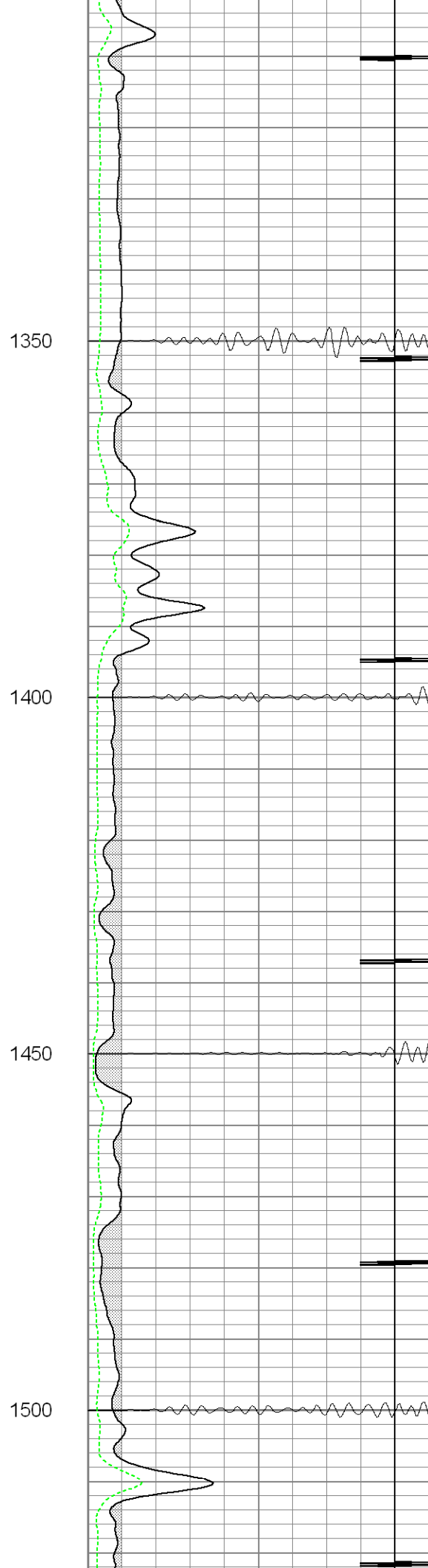
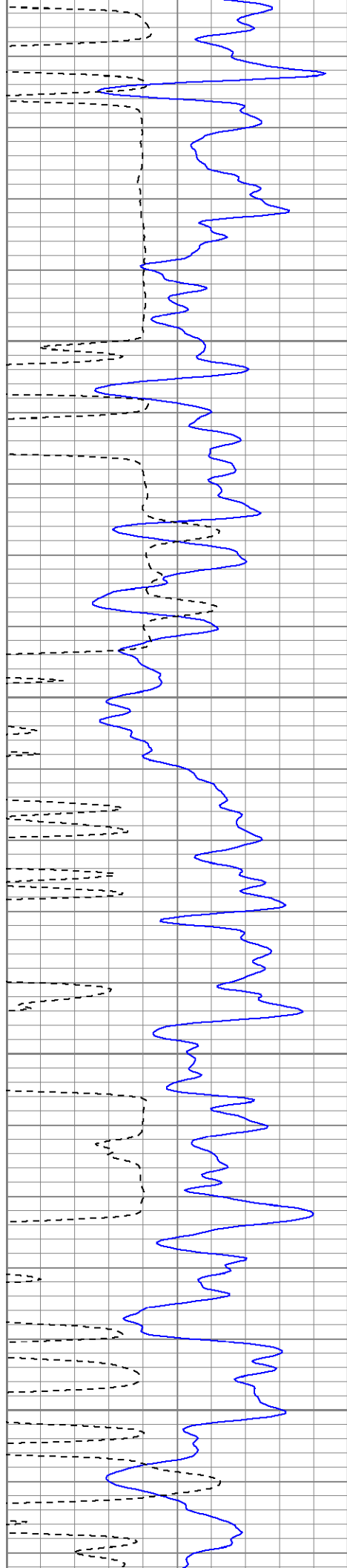
600

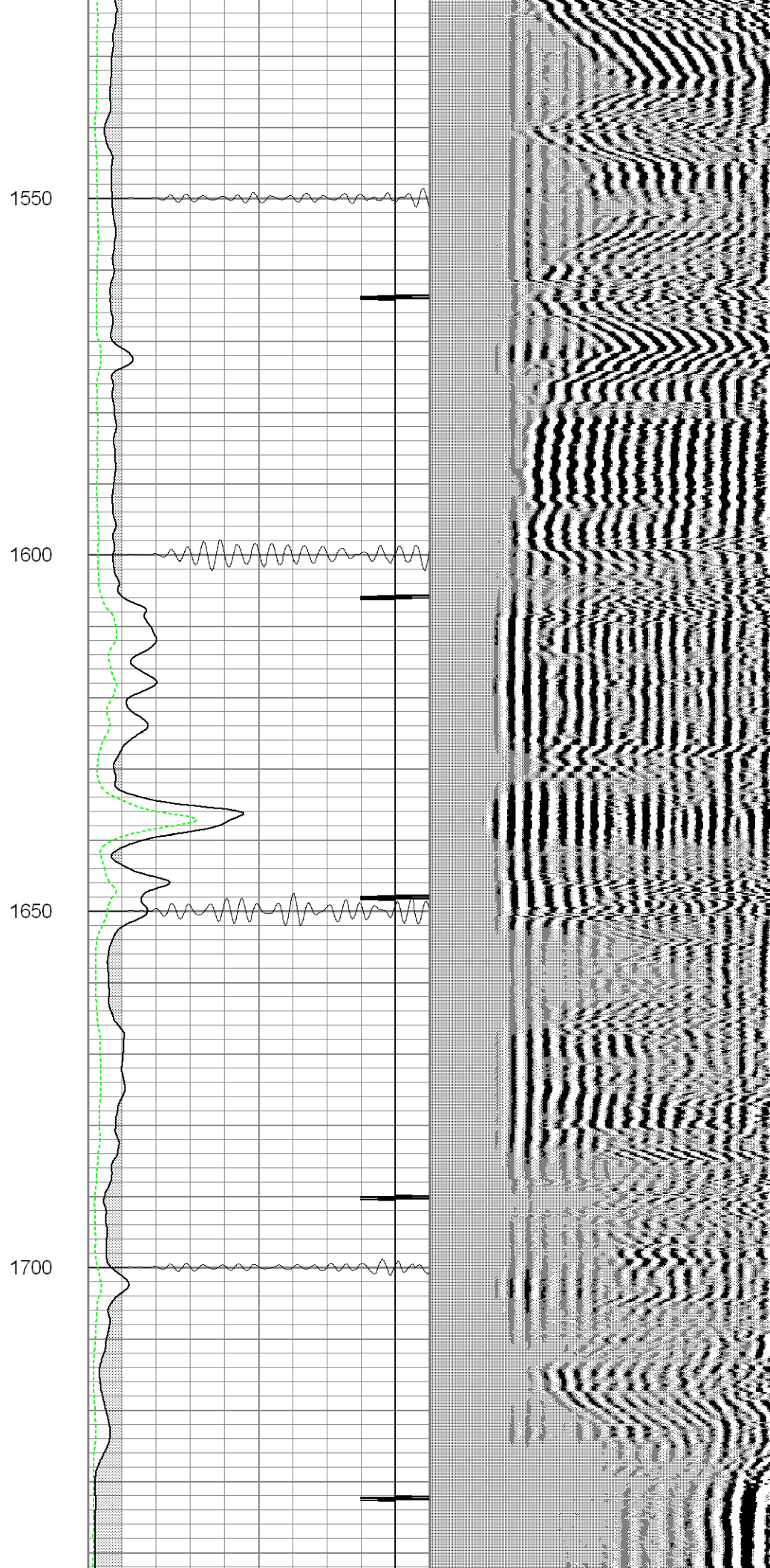
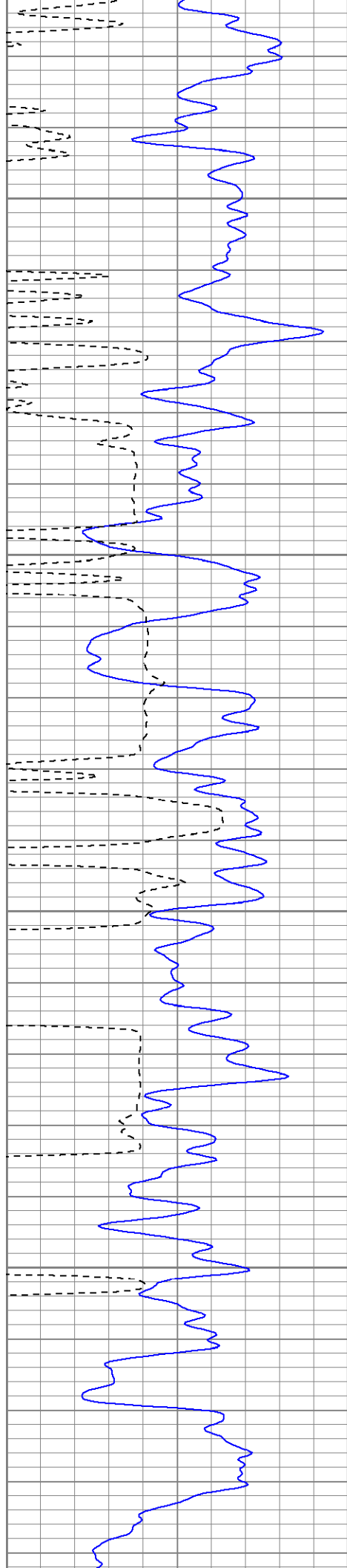


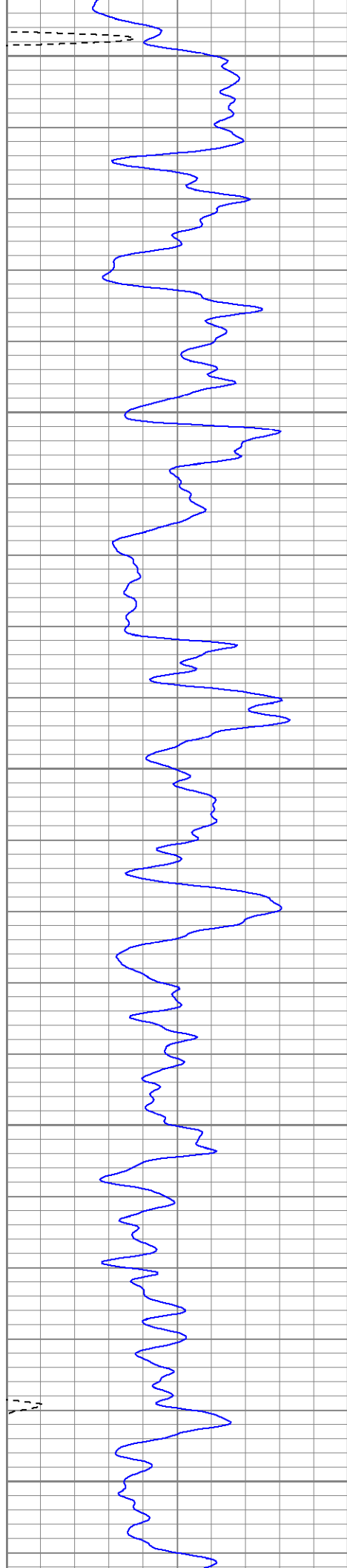












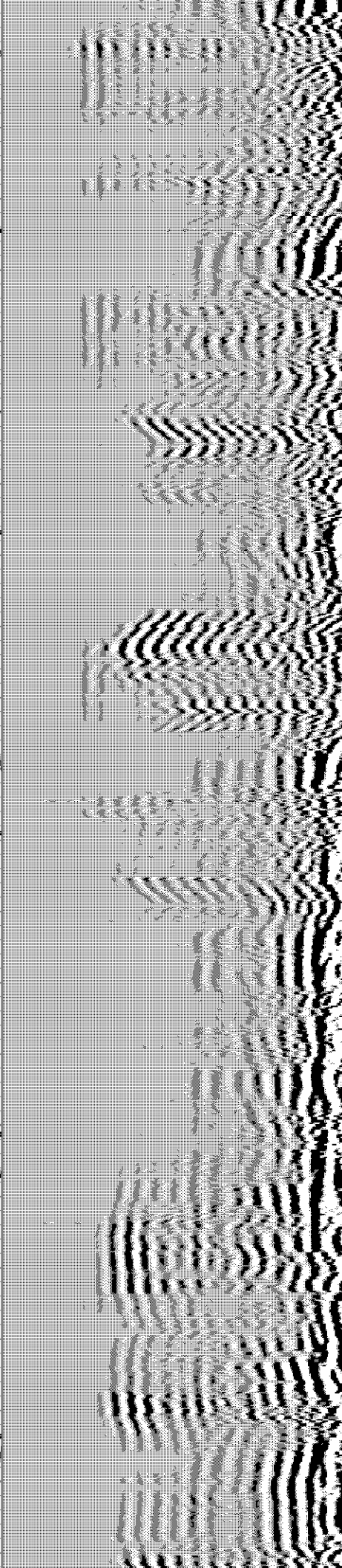
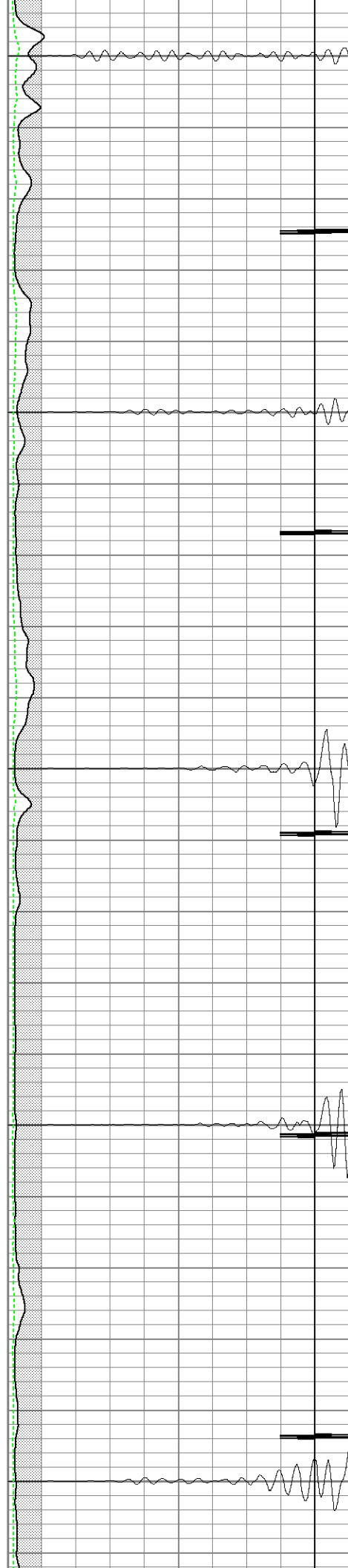
1750

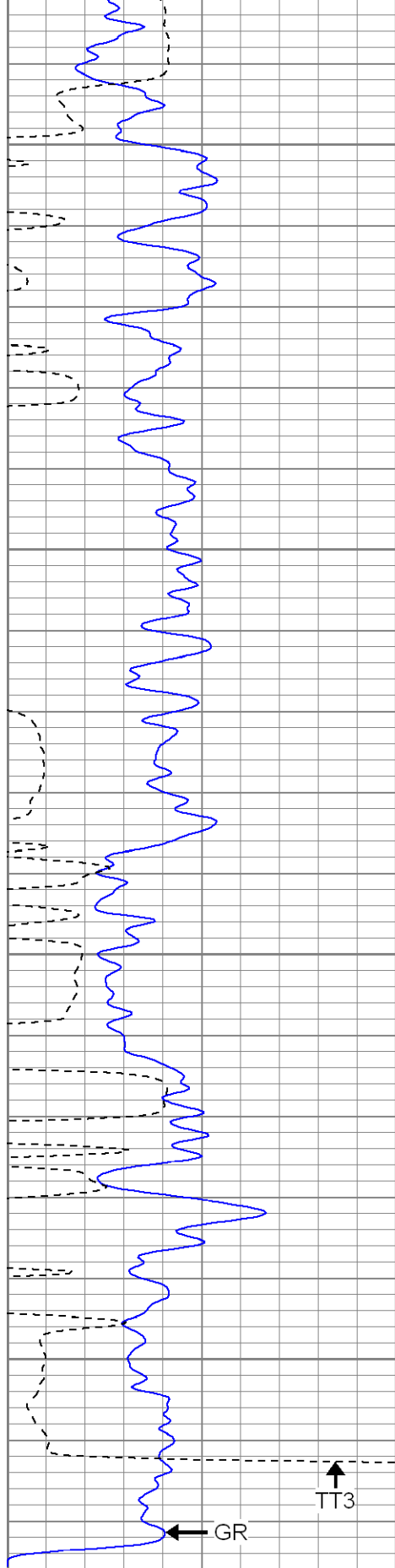
1800

1850

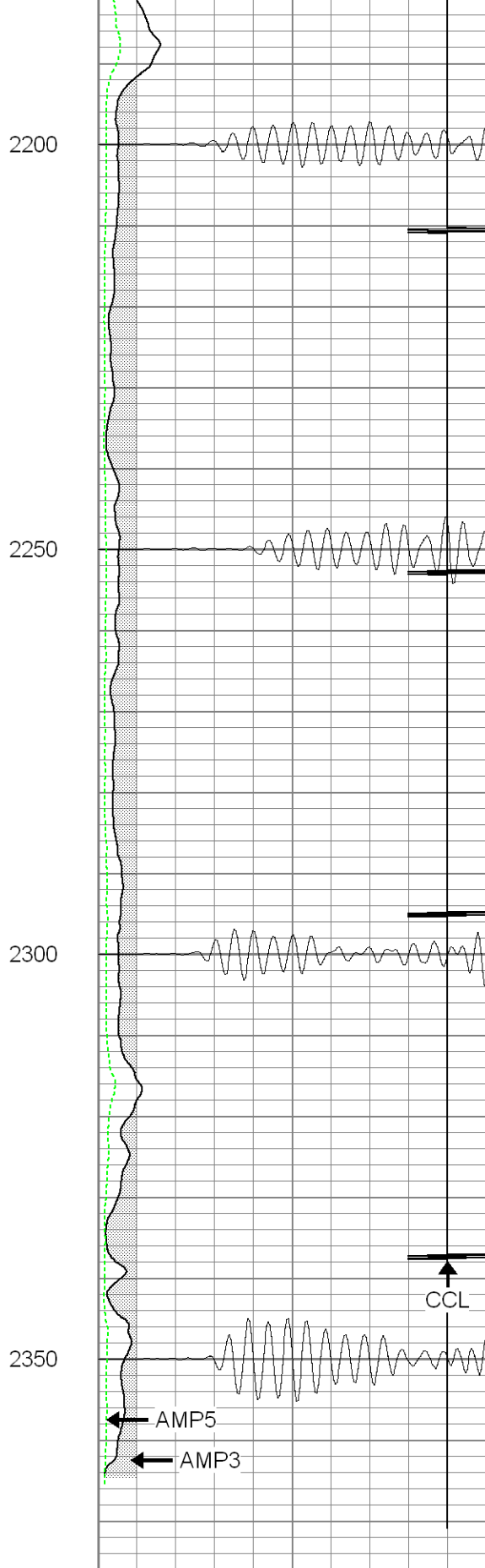
1900

1950

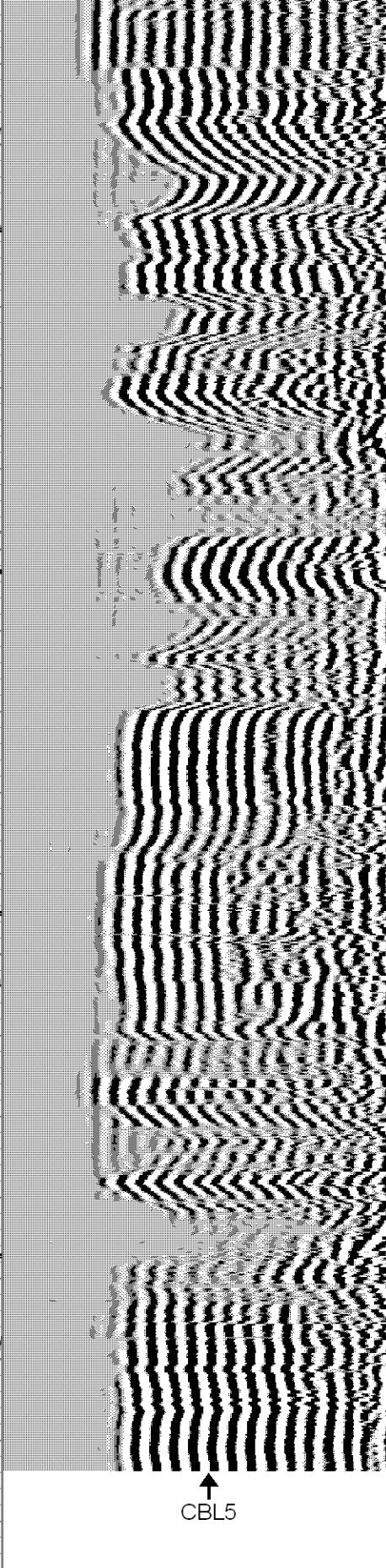




0	GR (GAPI)	200
400	TT3 (usec)	200



0	AMP3 (mV)	100
18	CCL	-2
200	CBL5	1200
0	AMP5 (mV)	100



200	Variable Density	1200
-----	------------------	------



SUPERIOR
Black Lick, Pa.
Mercer, Pa.
Wooster, Oh.
Cleveland, Ok.
Trinidad, Co.

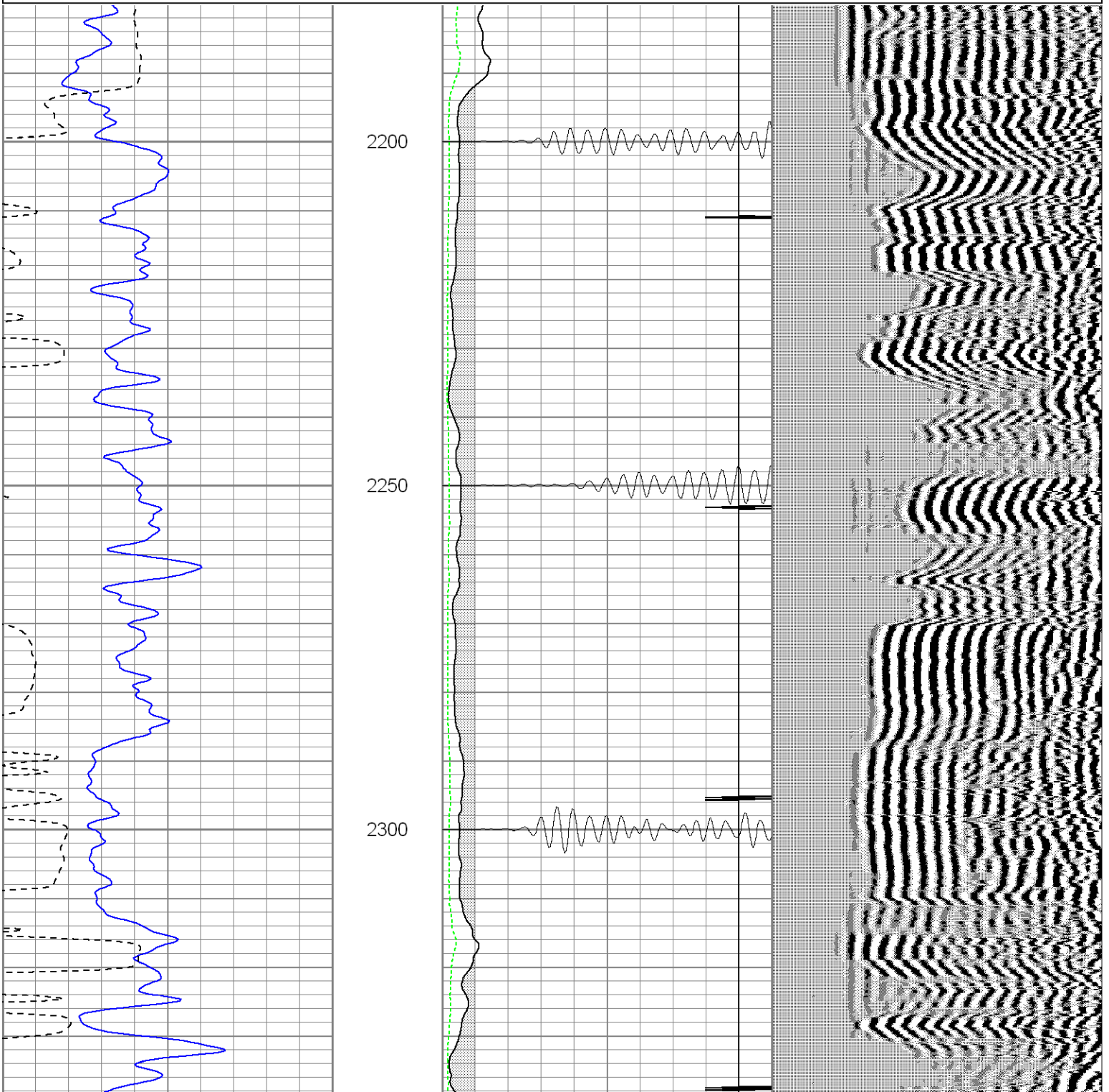
Repeat Section

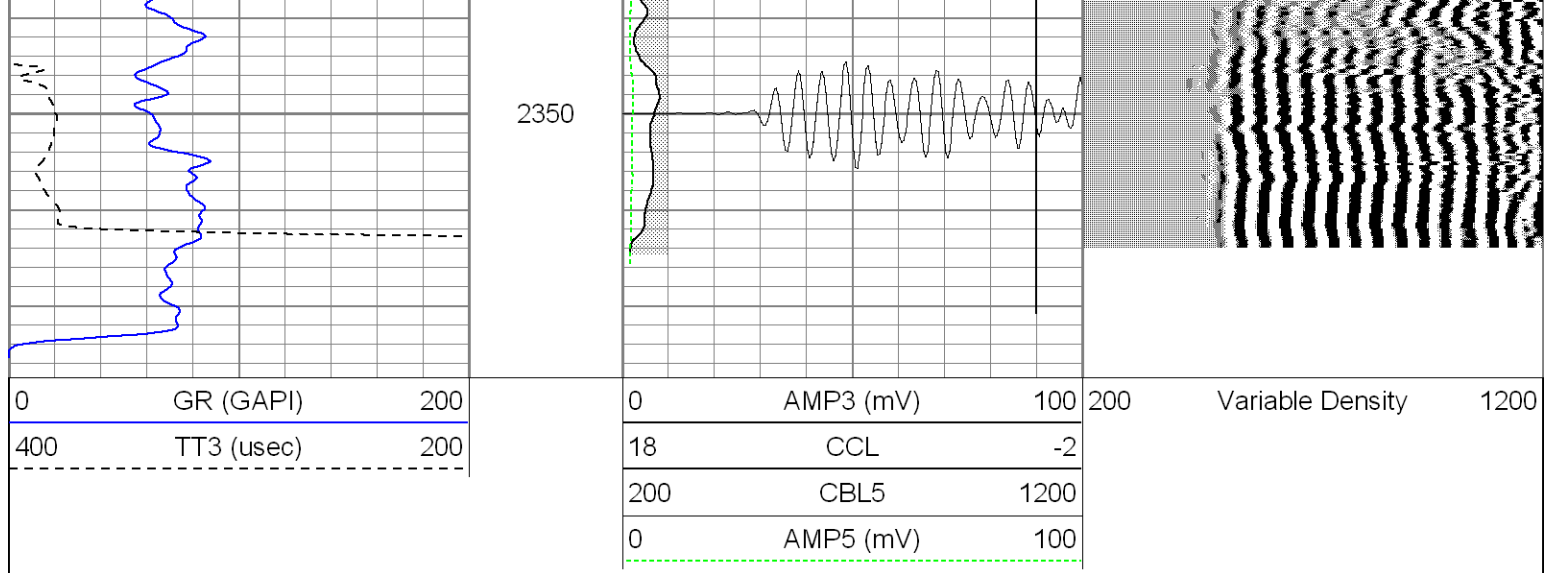
Database File: maximus010909b.db
Dataset Pathname: pass1.1
Presentation Format: cblrtd
Dataset Creation: Fri Jan 09 13:06:15 2009 by Calc Open-Cased 071220
Charted by: Depth in Feet scaled 1:240

0	GR (GAPI)	200
400	TT3 (usec)	200

0	AMP3 (mV)	100
18	CCL	-2
200	CBL5	1200
0	AMP5 (mV)	100

200 Variable Density 1200





Calibration Report

Database File: maximus010909b.db
Dataset Pathname: pass1.1
Dataset Creation: Fri Jan 09 13:06:15 2009 by Calc Open-Cased 071220

Gamma Ray Calibration Report

Serial Number: 081015
Tool Model: 275D_INC
Performed: Tue Jan 06 09:13:03 2009

Calibrator Value: 200.0 GAPI

Background Reading: 50.0 cps
Calibrator Reading: 250.0 cps

Sensitivity: 0.9000 GAPI/cps

Inclinometer Calibration Report

Performed: Tue Jan 06 09:12:57 2009

	Low Read.	High Read.	Low Ref.	High Ref.	
X Accelerometer	-3568.00	3589.40	-1.00	1.00	gee
Y Accelerometer	-3621.60	3494.00	-1.00	1.00	gee
Z Accelerometer					

Cement Bond Log Calibration Report

Serial Number: 081024
Tool Model: PROBEDIGITALCBL
Performed: Tue Jan 06 09:12:36 2009

Depth: 0 ft
Casing Diameter: 0 in

	3' Spacing	5' Spacing	
Signal Zero:	0	0	mV
Calibrated Amplitude:	85	85	mV
Reading at Signal Zero:	-0.04	-0.04	V
Reading in Free Pipe:	1.8	1.97	V

42.2886
1.69154

Dataset:	maximus010909b.db: field/well/run1/pass1.1
Total Length:	23.00 ft
Total Weight:	236.50 lb
O.D.	2.75 in