

HALLIBURTON

Gamma Ray C.C.L.
Cement Bond V.D.L.

Company		Noble Energy Inc.		Company		Noble Energy Inc.	
Well		Wells Ranch USX AA 35-08		Well		Wells Ranch USX AA 35-08	
Field		Wattenberg		Field		Wattenberg	
County		Weld		County		Weld	
State		Colorado		State		Colorado	
API No.:		05-123-25883-00		Serv #:		5655765	
Location:		2017' FNL & 604' FEL		Other Services			
SE NE							
Permanent Datum				GL			
Log Measured From				KB			
Drilling Measured From				KB			
Date @ Time Logged				June 16, 2008			
Run No.				One			
Depth - Driller				6849			
Depth - Logger				6807			
Bottom - Logged Interval				6805			
Top - Log Interval				1814			
Max. Recorded Temp.				NOT RECORDED			
CEMENTING DATA				Surface			
Date / Time Cemented				String			
Primary / Squeeze				String			
Expected Compressive Strength				psi@ hrs			
Cement Volume				psi@ hrs			
Cement Type / Weight				psi@ hrs			
Formulation				psi@ hrs			
Mud Type / Mud Wgt.				/			
Borehole Record				Casing & Tubing Record			
Run Number				Bit			
From				To			
Size				Weight			
4.5				11.6			
TD				From			
To				Surface			

<<< Fold Here >>>

HALLIBURTON DOES NOT GUARANTEE THE ACCURACY OF ANY INTERPRETATION OF THE LOG DATA, CONVERSION OF LOG DATA TO PHYSICAL ROCK PARAMETERS OR RECOMMENDATIONS WHICH MAY BE GIVEN BY HALLIBURTON PERSONNEL OR WHCIH APPEAR ON THE LOG OR IN ANY OTHER FORM. ANY USER OF SUCH DATA, INTERPRETATIONS, CONVERSIONS, OR RECOMMENDATIONS AGREES THAT HALLIBURTON IS NOT RESPONSIBLE EXCEPT WHERE DUE TO GROSS NEGLIGENCE OR WILLFUL MISCONDUCT, FOR ANY LOSS, DAMAGES, OR EXPENSES RESULTING FROM THE USE THEREOF.

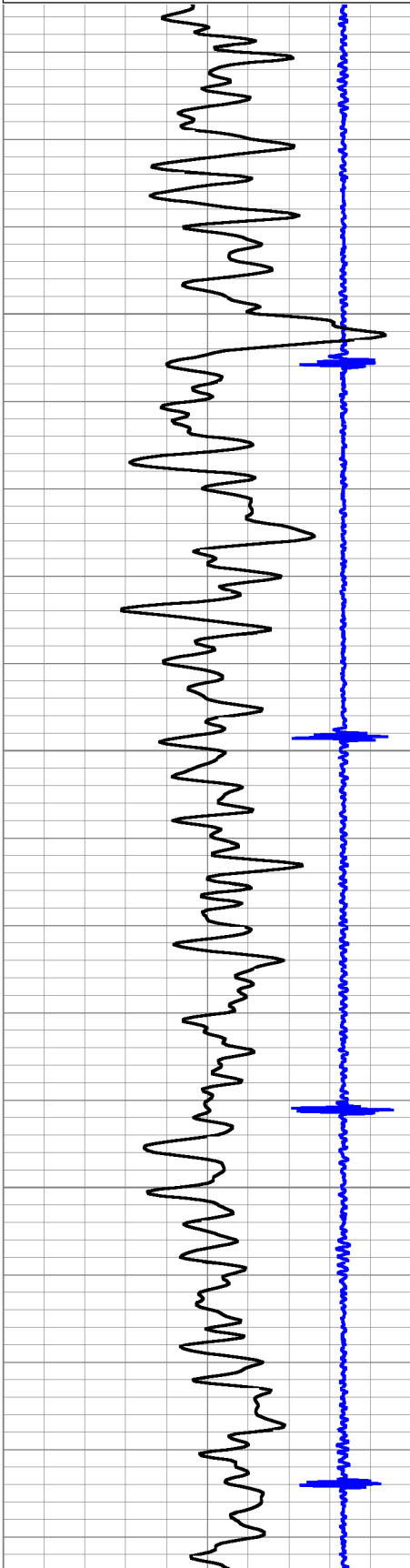
Comments

Corrected uphole 2 ft to correlate to PSI openhole dated June 9, 2008.

Dataset Pathname: pass2
Presentation Format: cblldig
Dataset Creation: Mon Jun 16 08:29:47 2008 by Log Halliburton Casedho
Charted by: Depth in Feet scaled 1:240

5	Collar Locator	-1
30	Gamma Ray (GAPI)	130

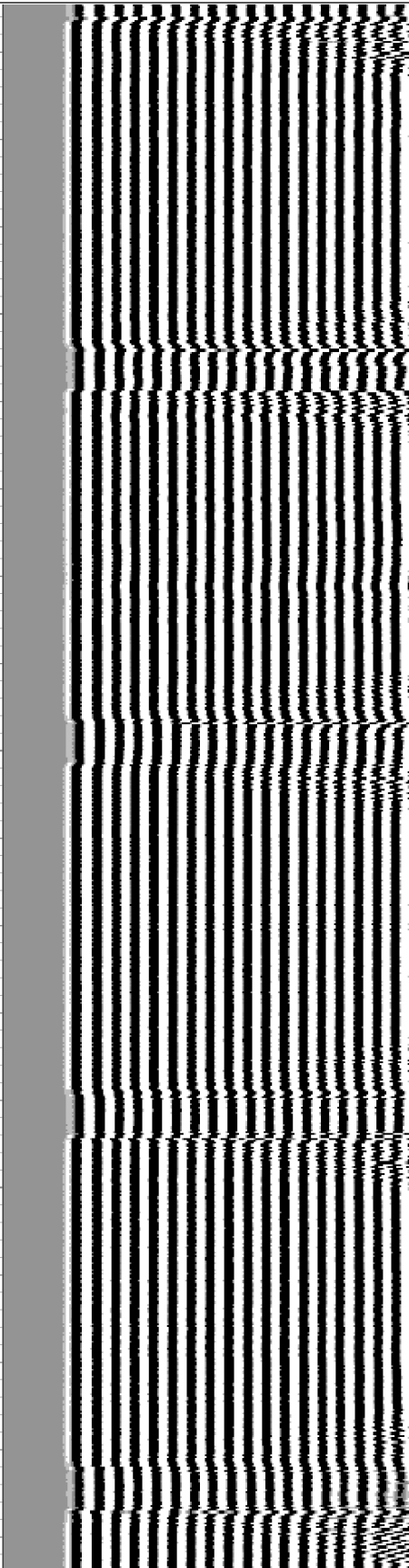
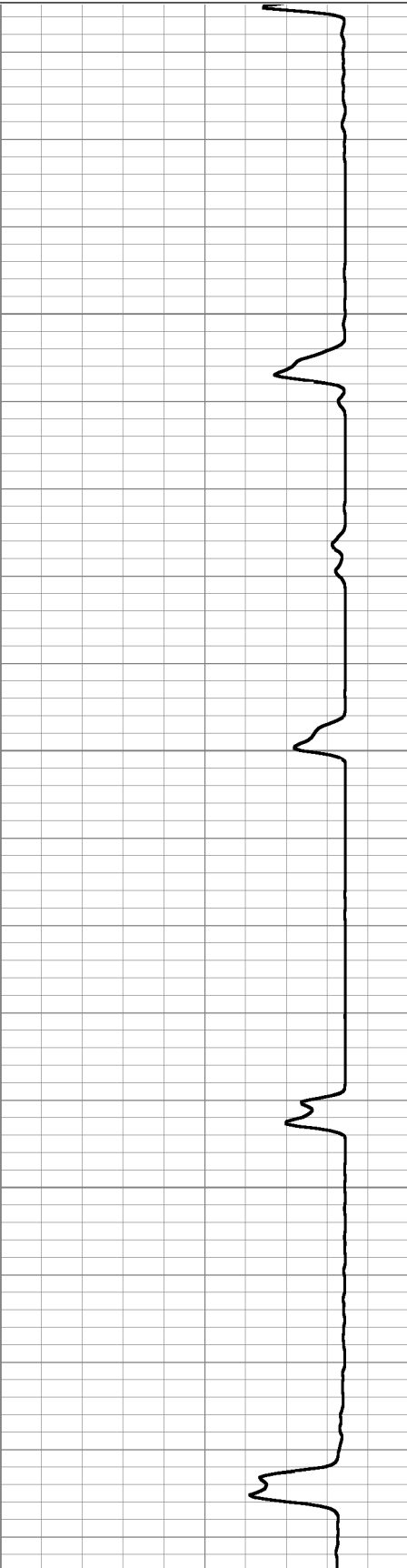
0	Amplified Amplitude (mV)	30	200	Variable Density	1200
0	Amplitude (mV)	100			

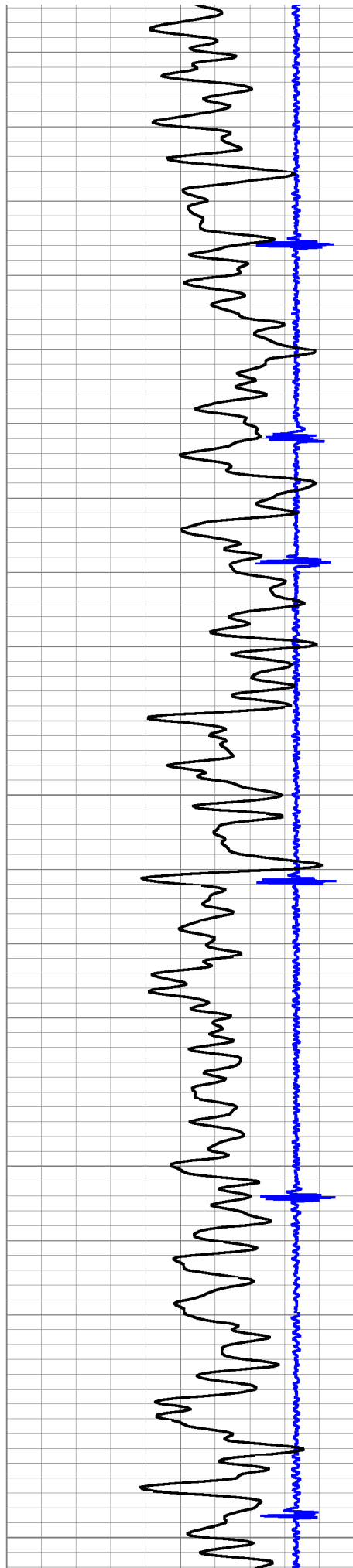


1850

1900

1950





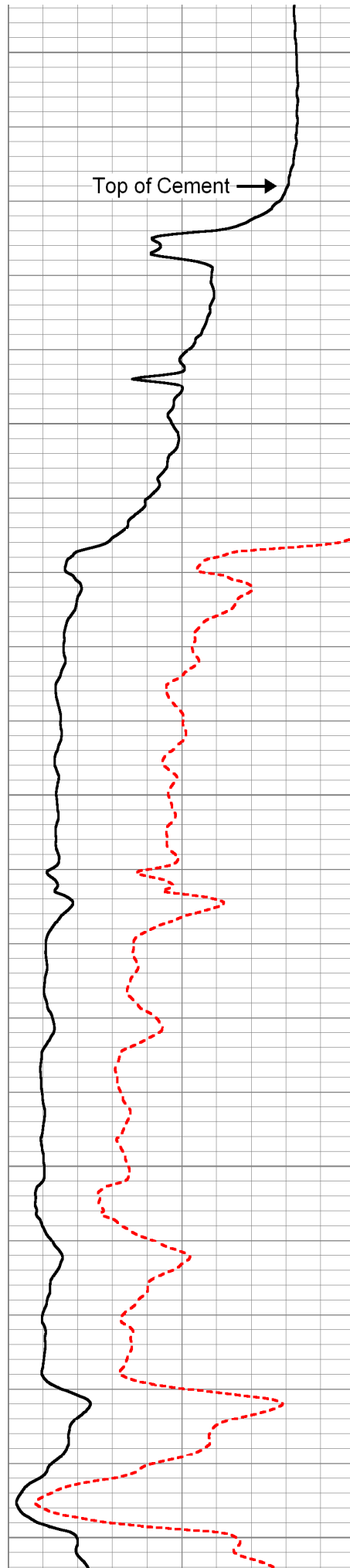
2000

2050

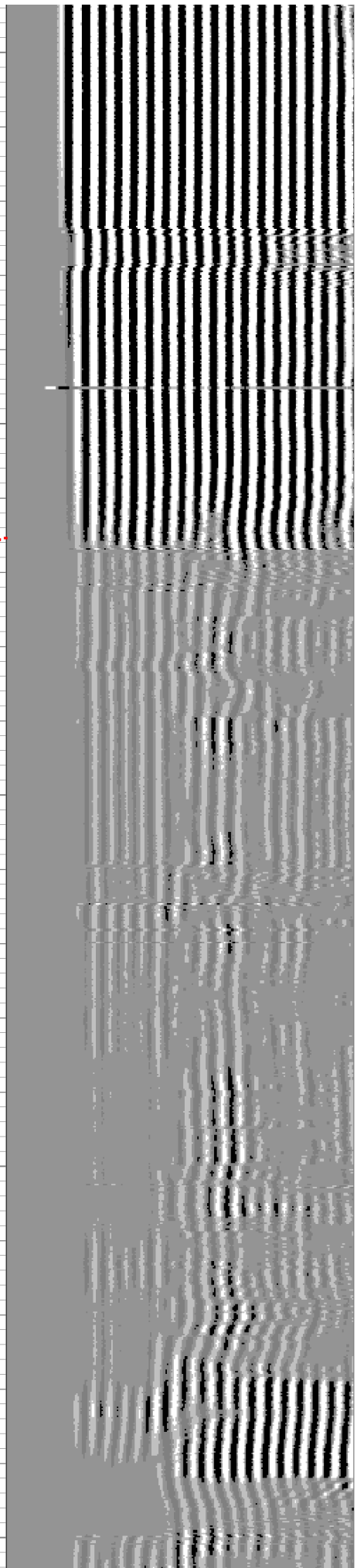
2100

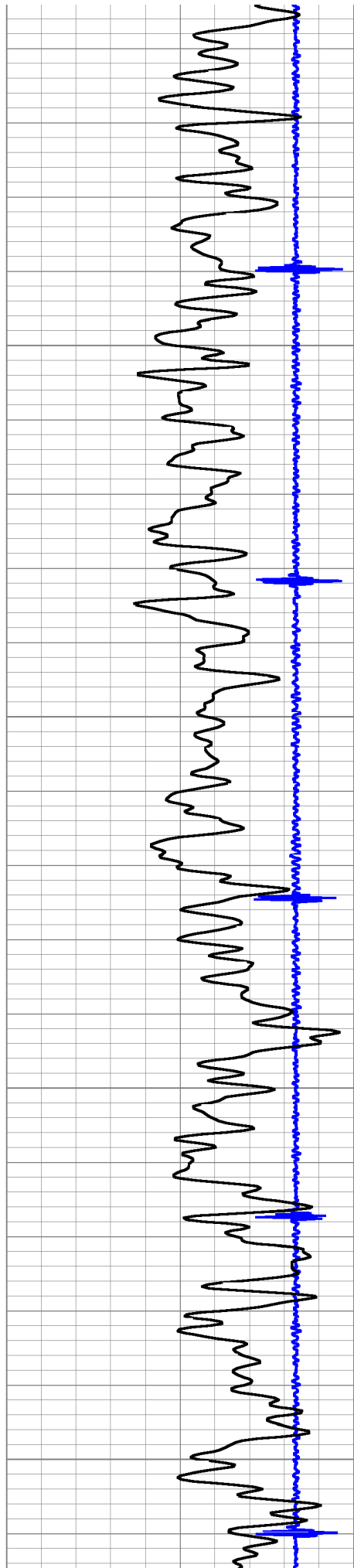
2150

2200



Top of Cement →



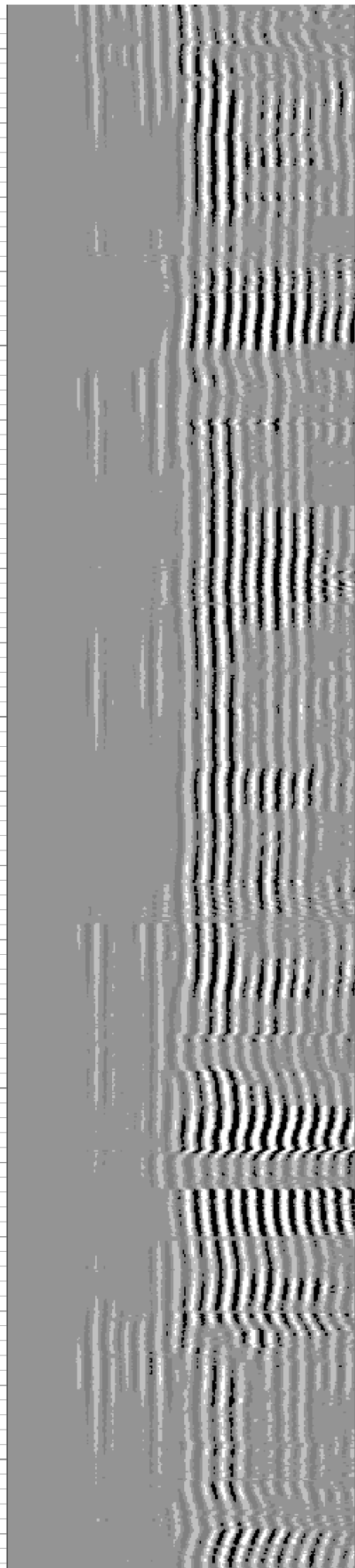
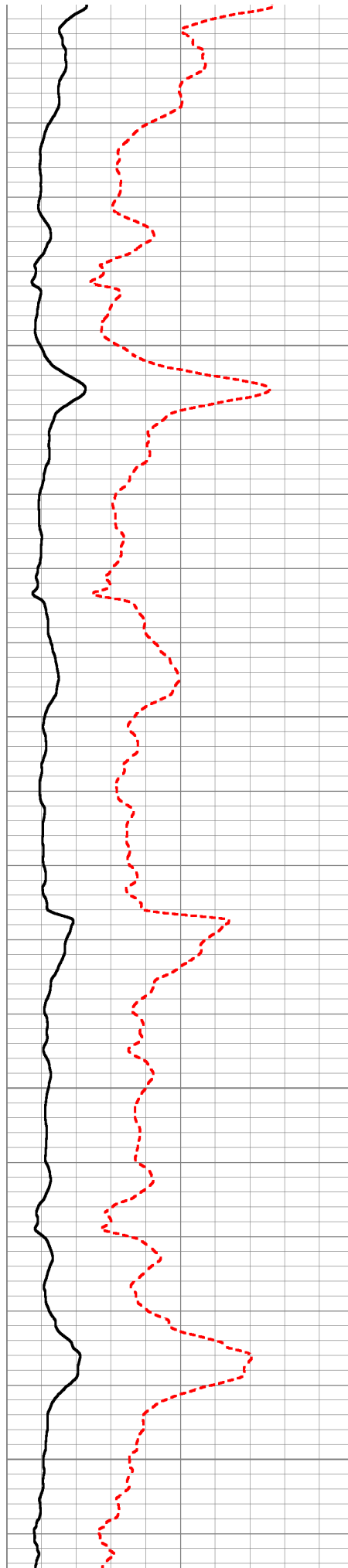


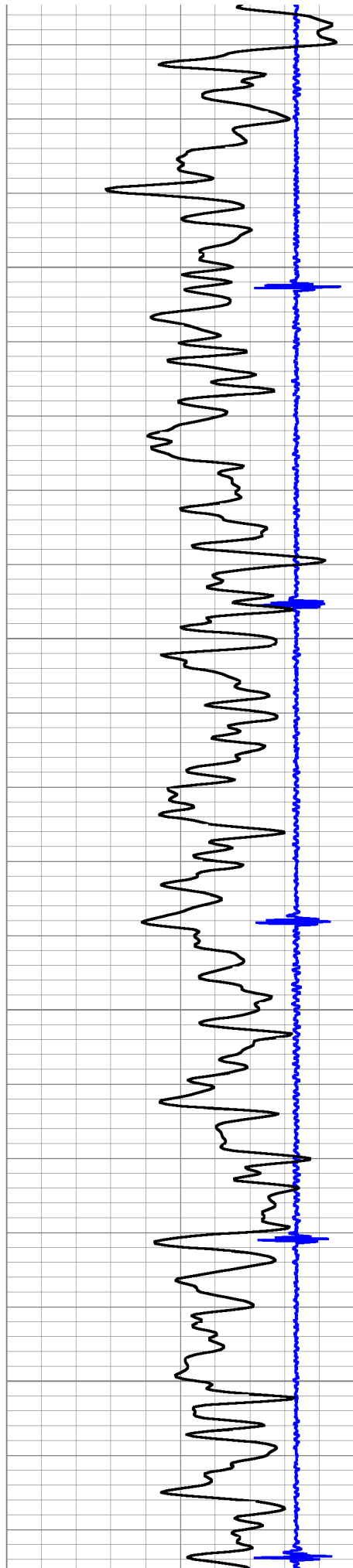
2250

2300

2350

2400



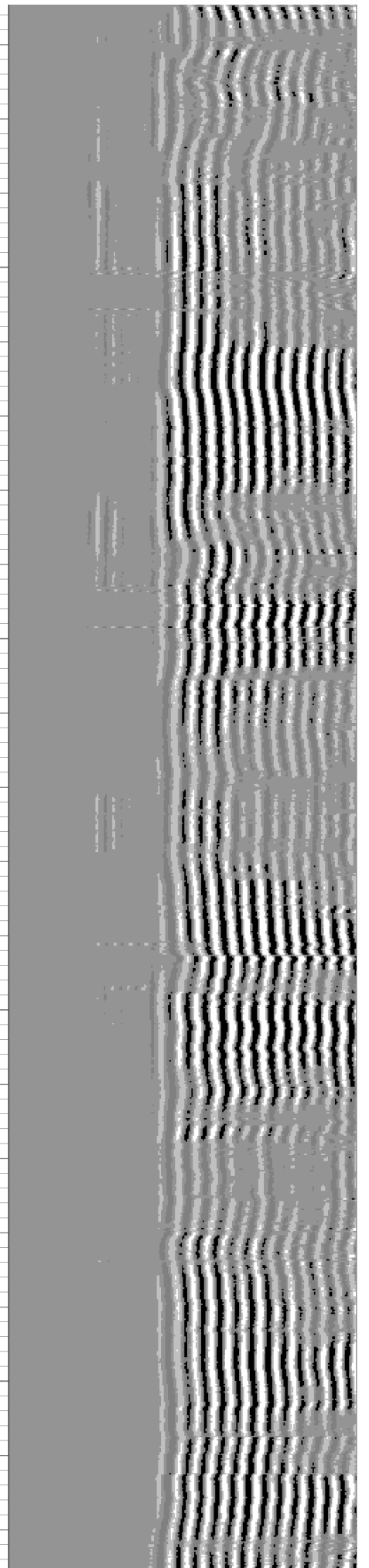
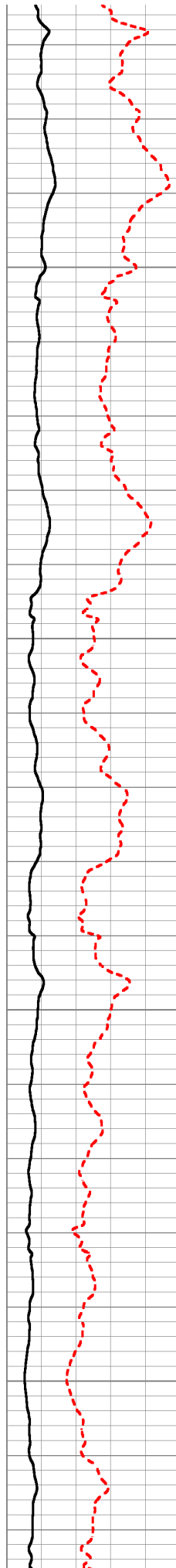


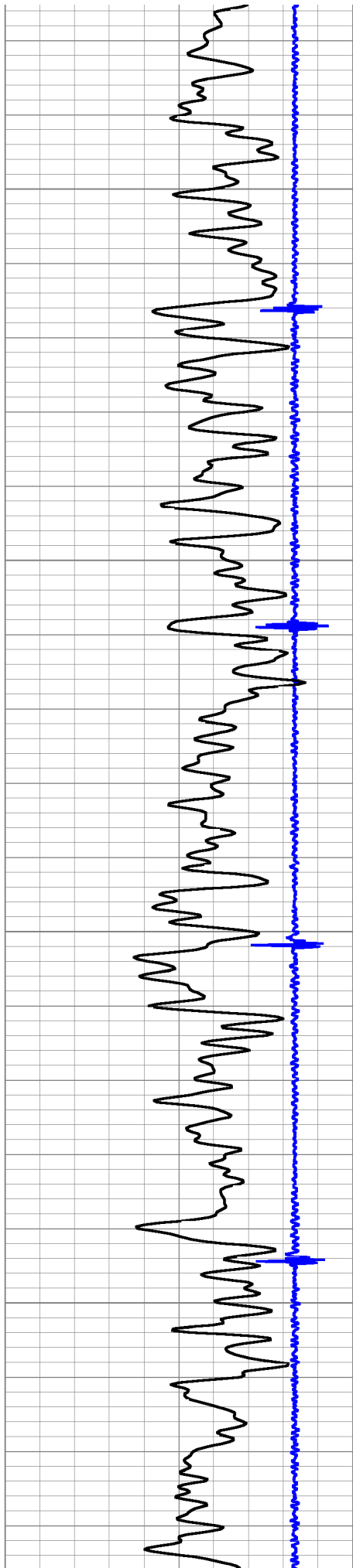
2450

2500

2550

2600



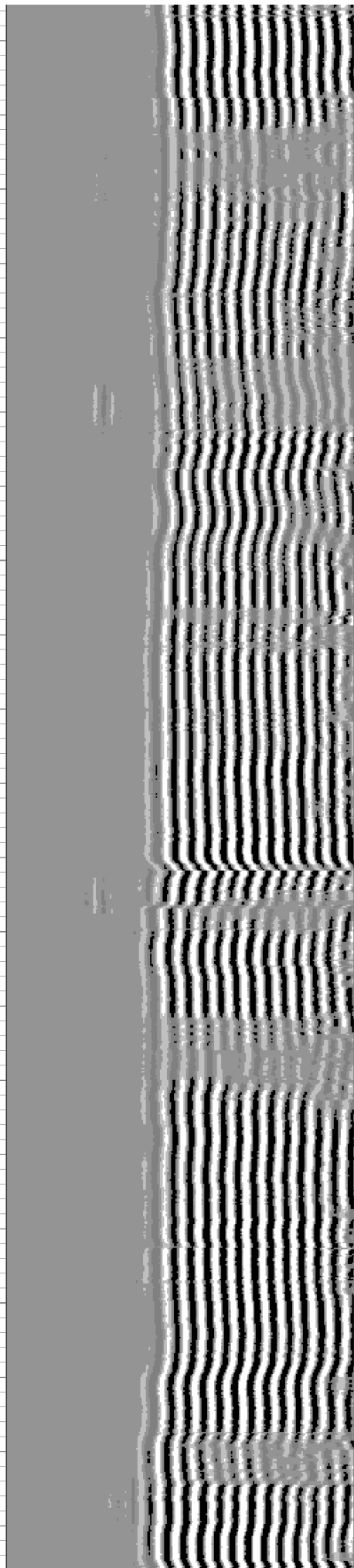
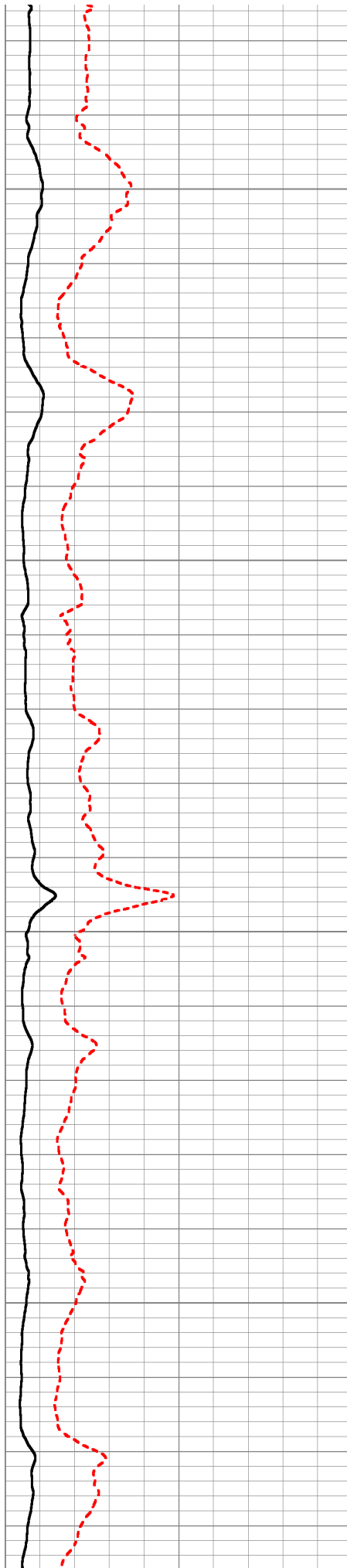


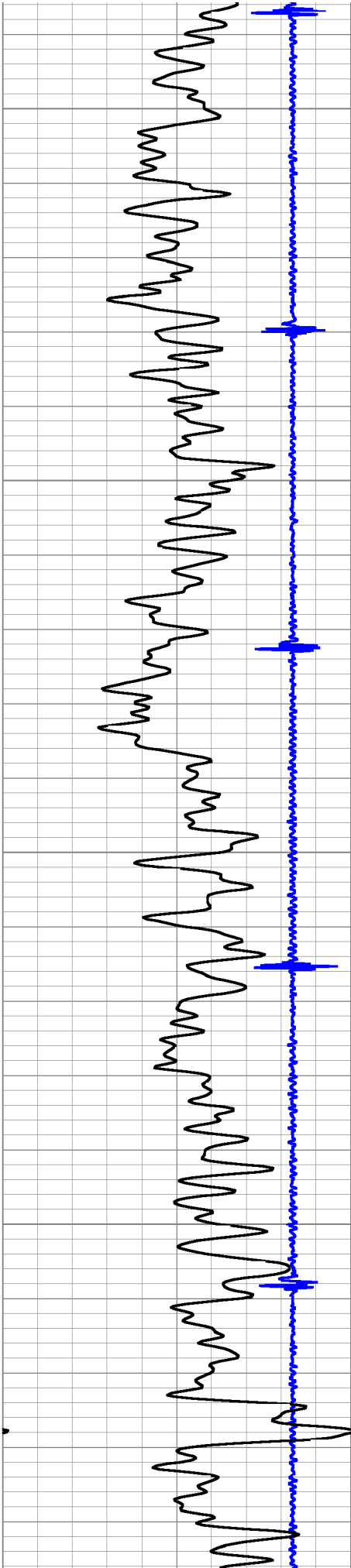
2650

2700

2750

2800



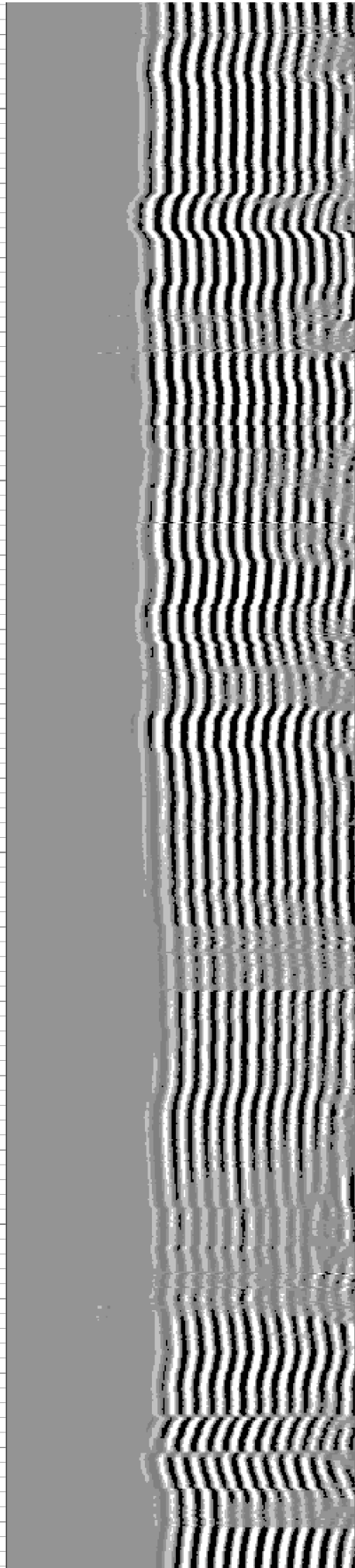
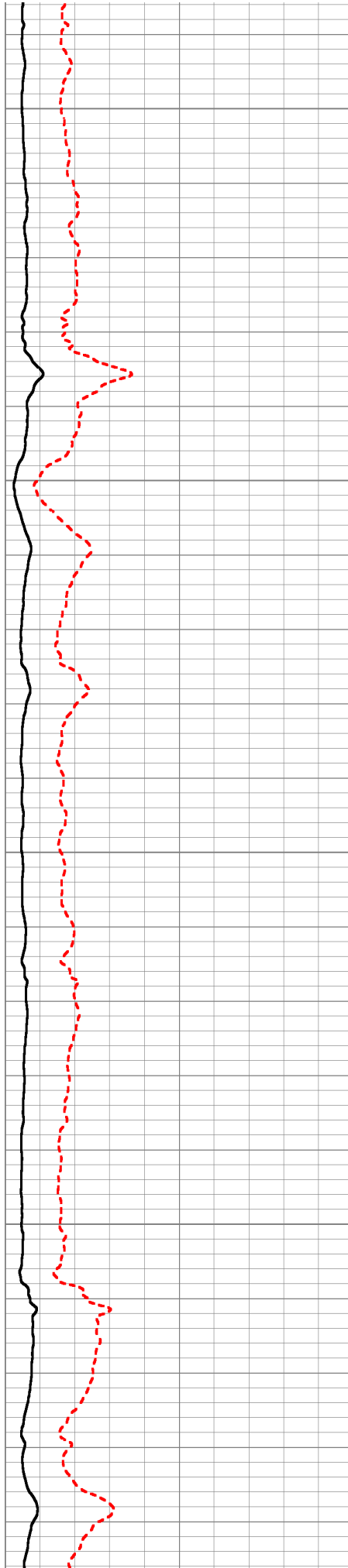


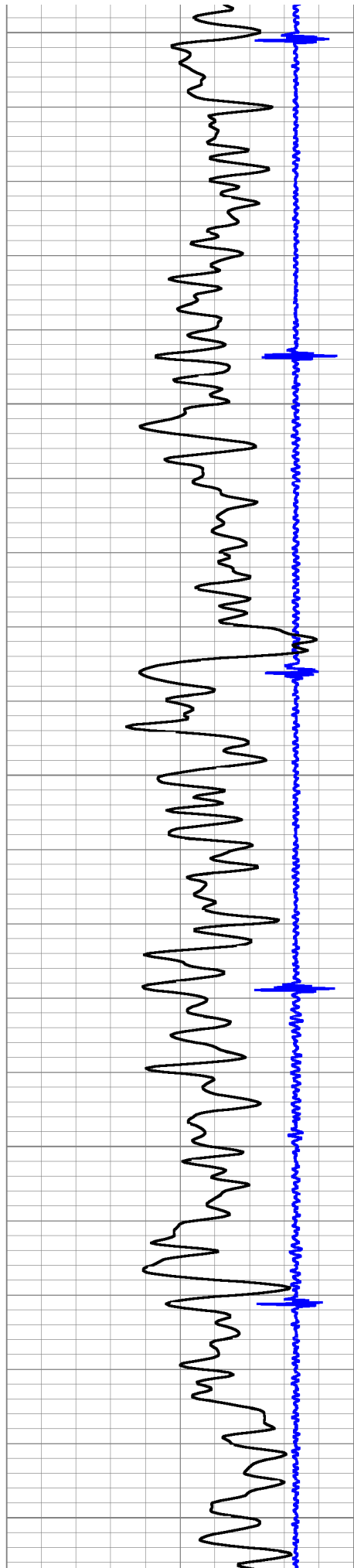
2850

2900

2950

3000





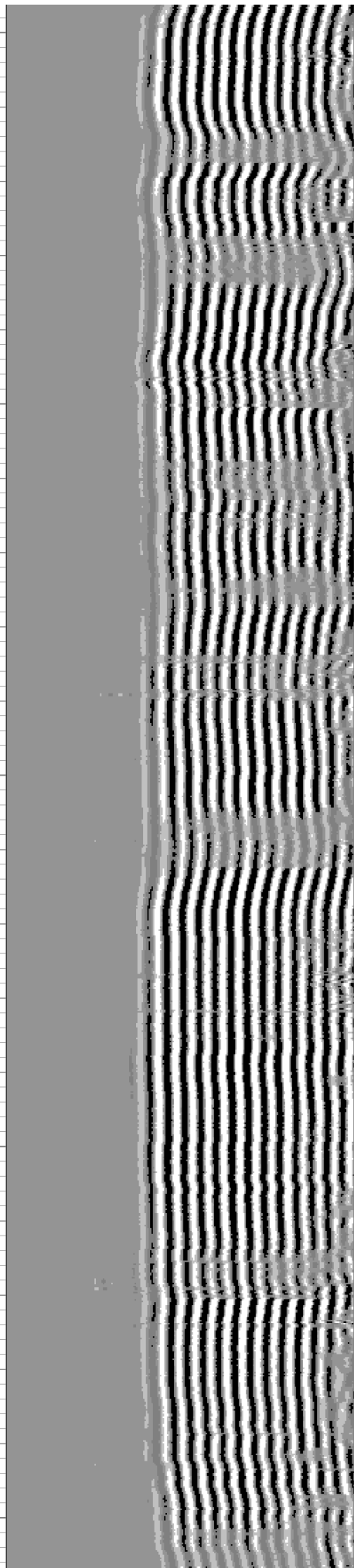
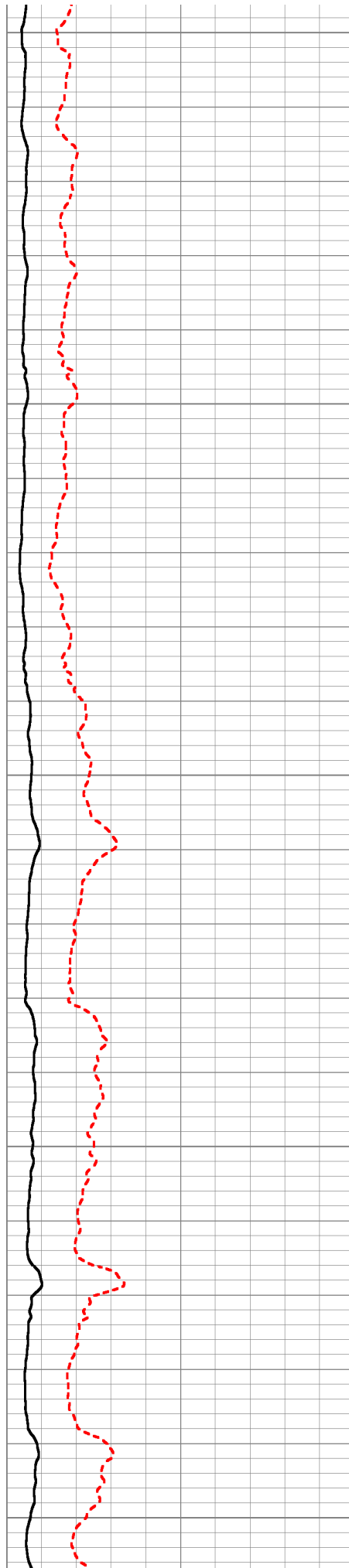
3050

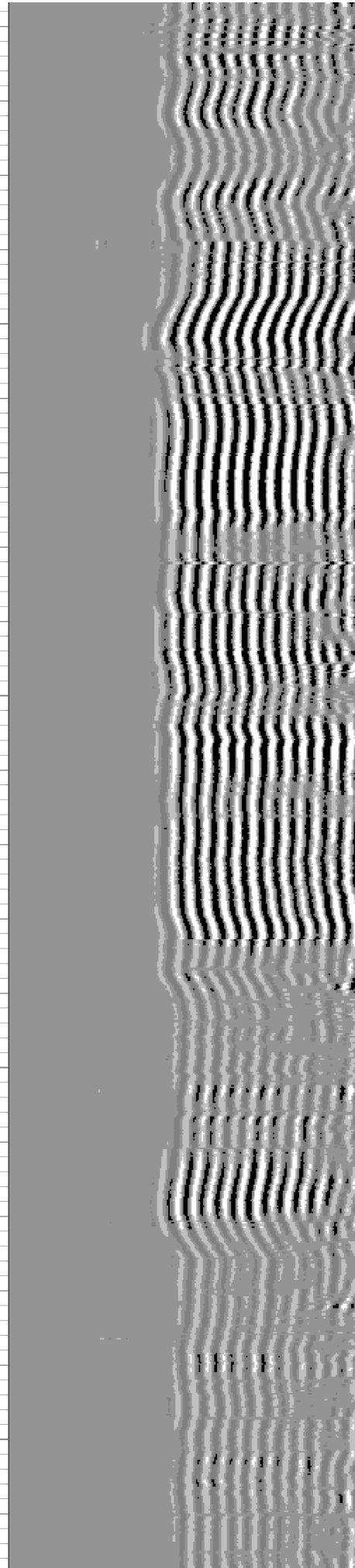
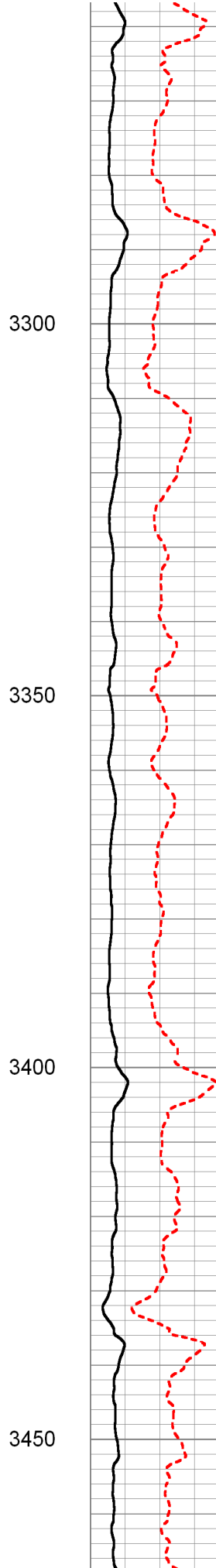
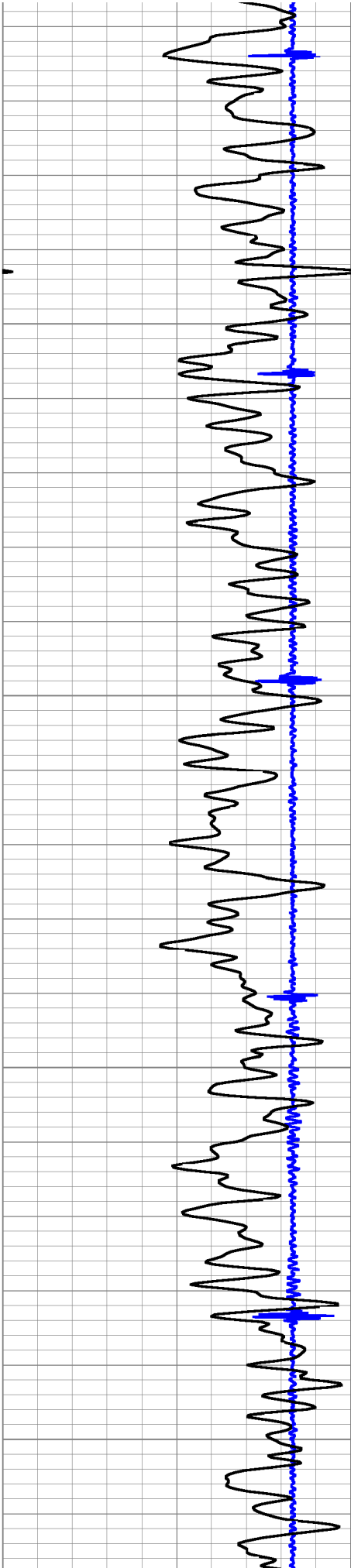
3100

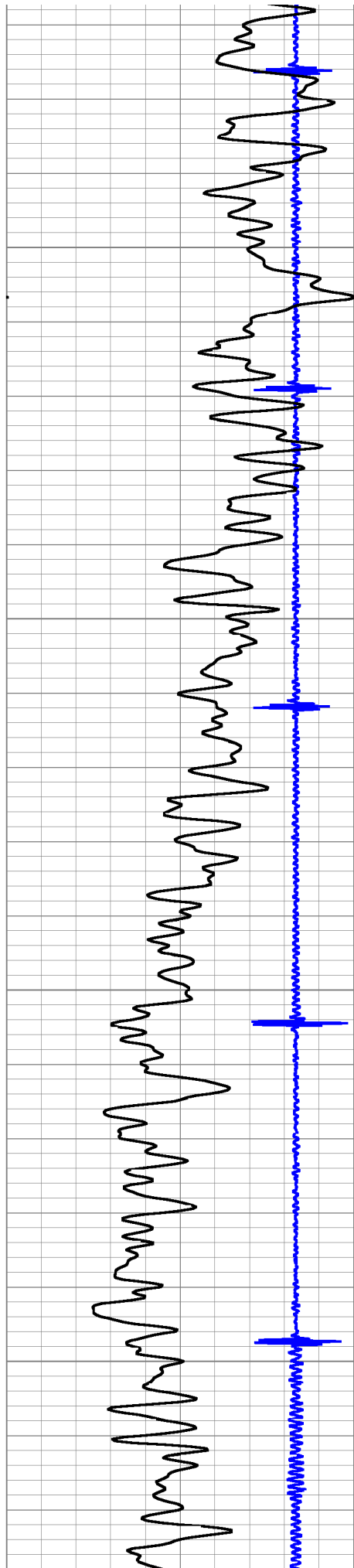
3150

3200

3250





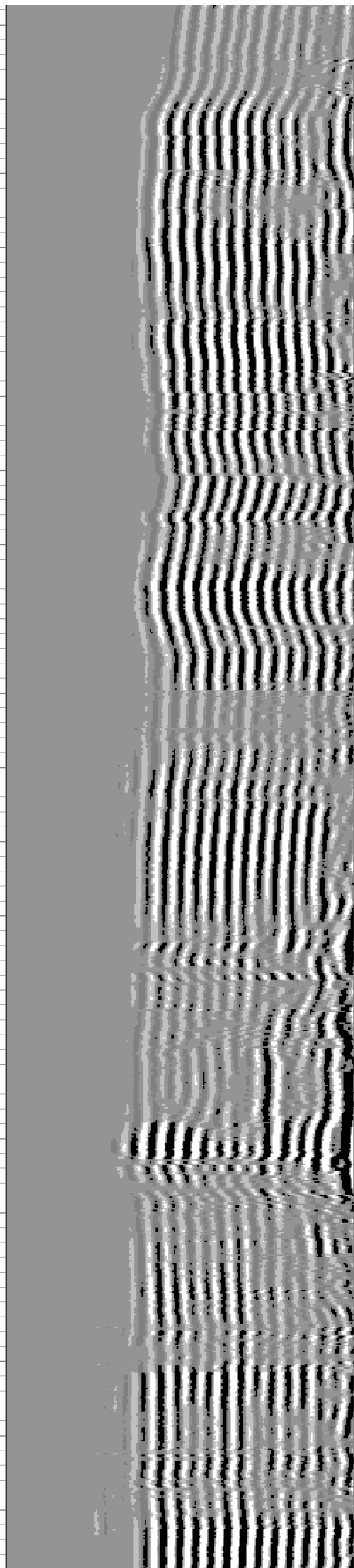
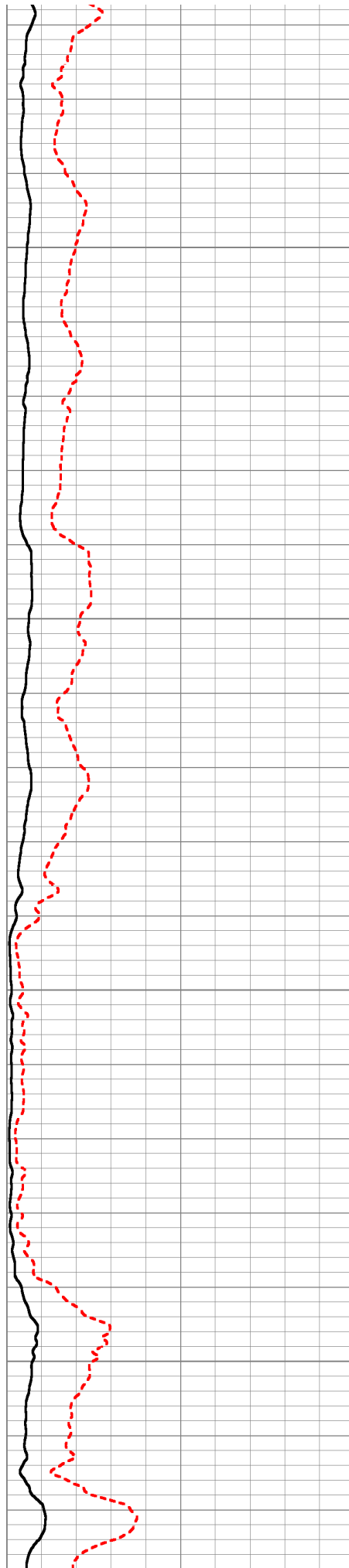


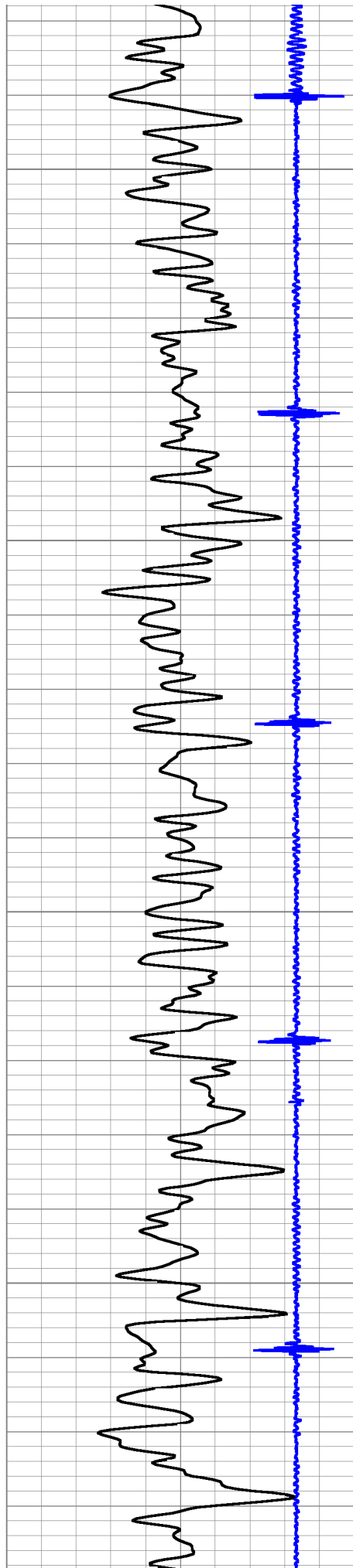
3500

3550

3600

3650



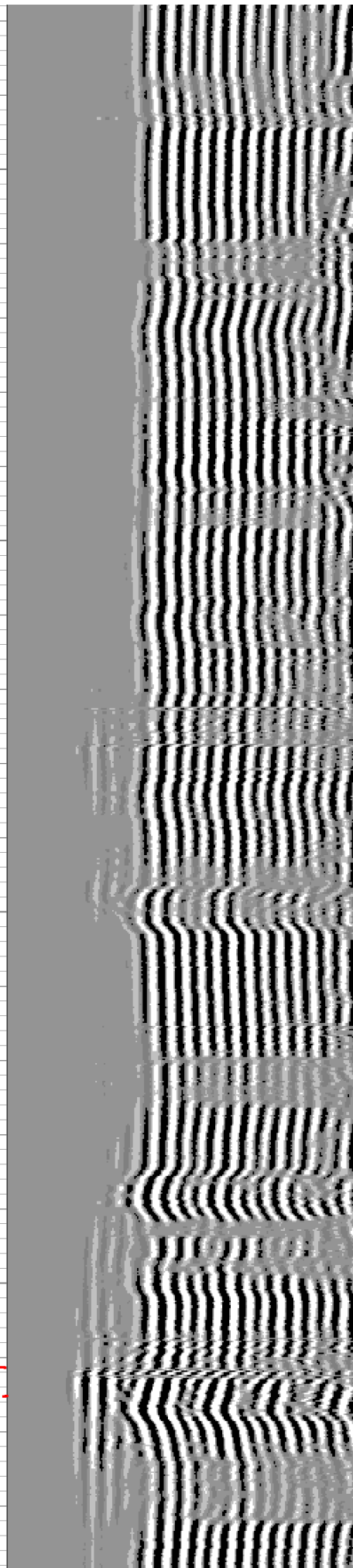
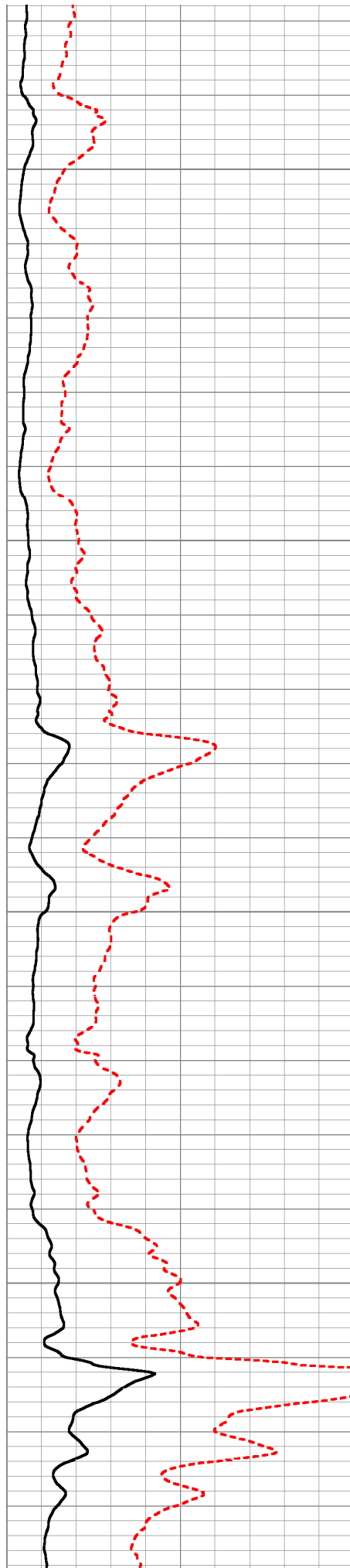


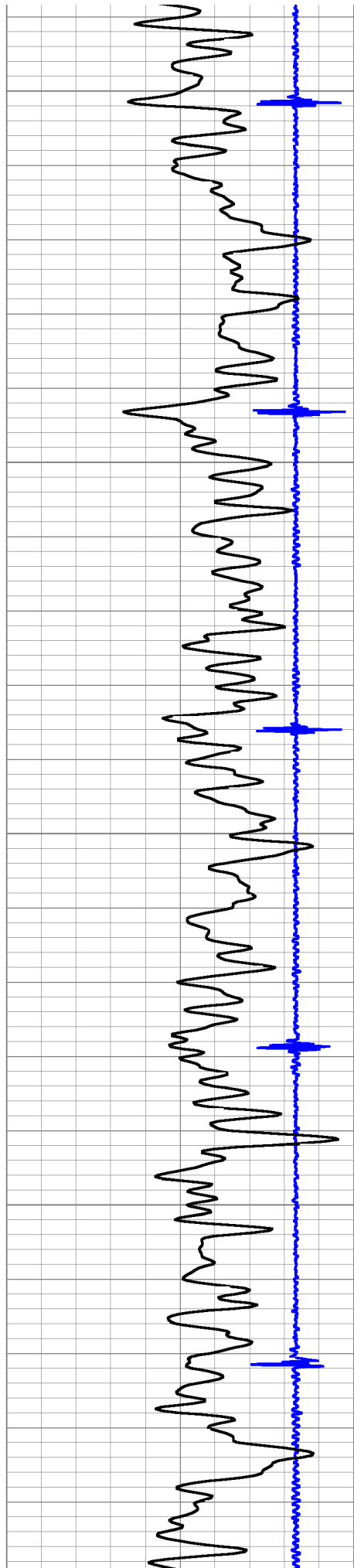
3700

3750

3800

3850



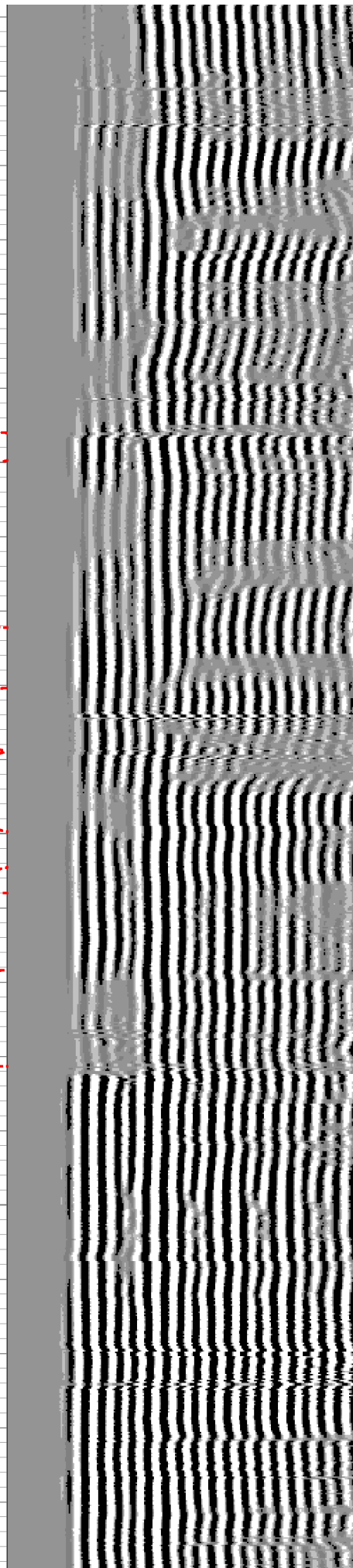
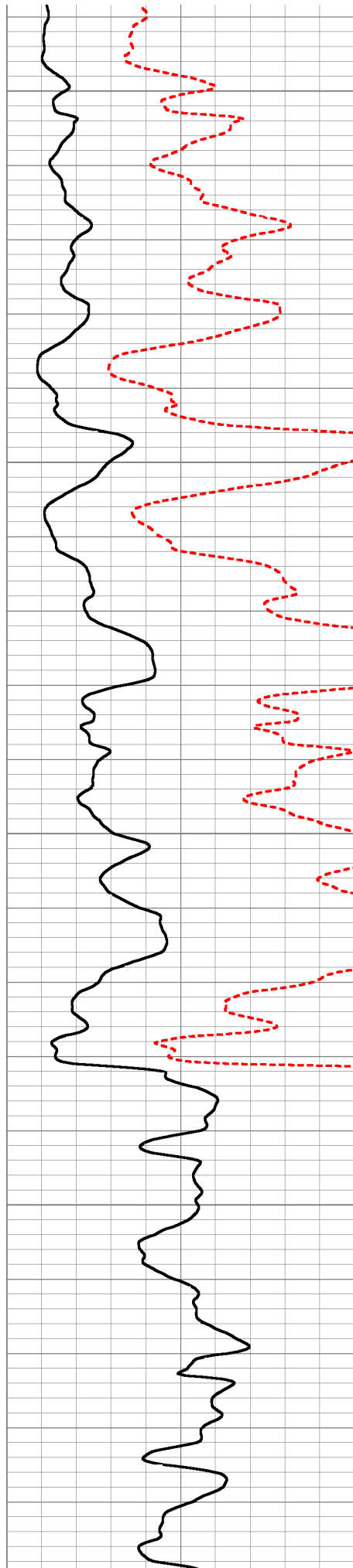


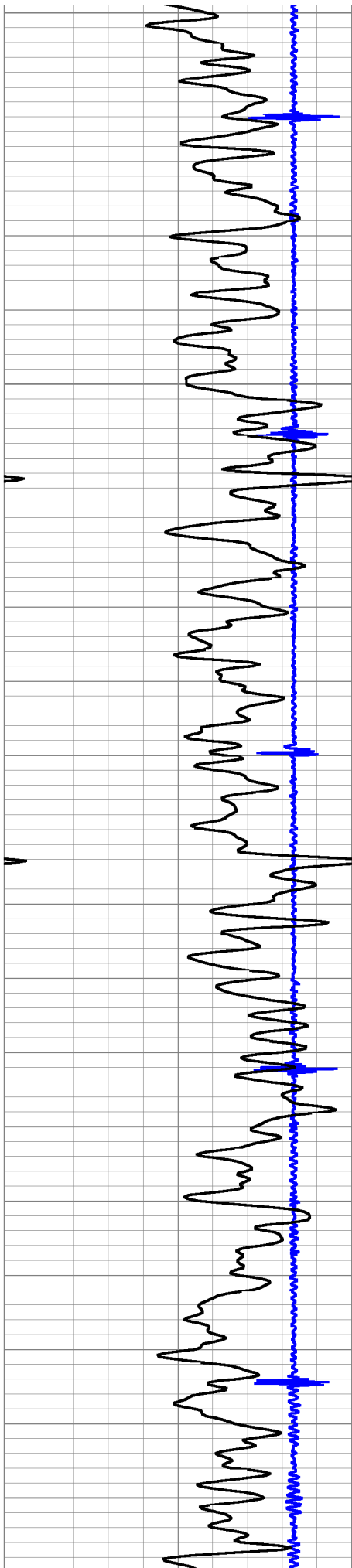
3900

3950

4000

4050





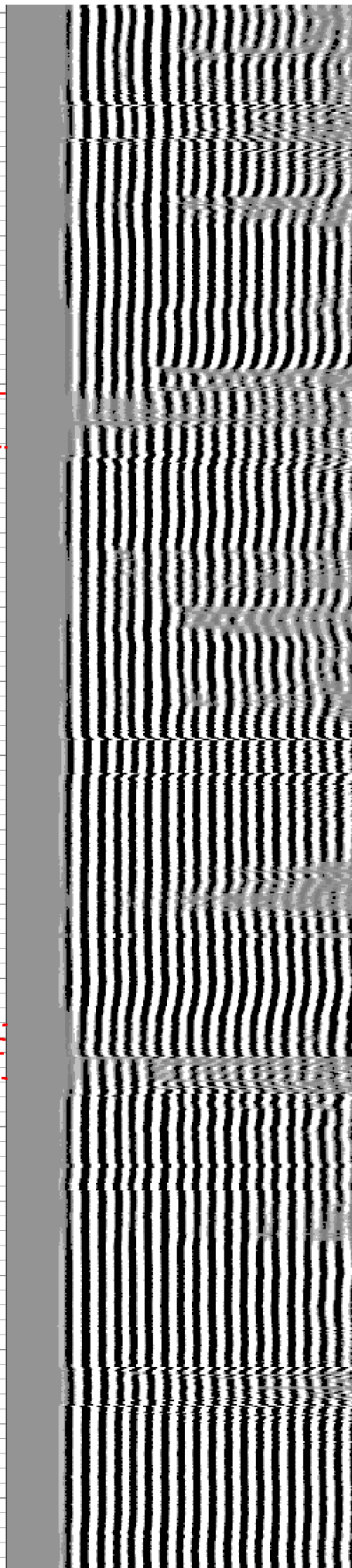
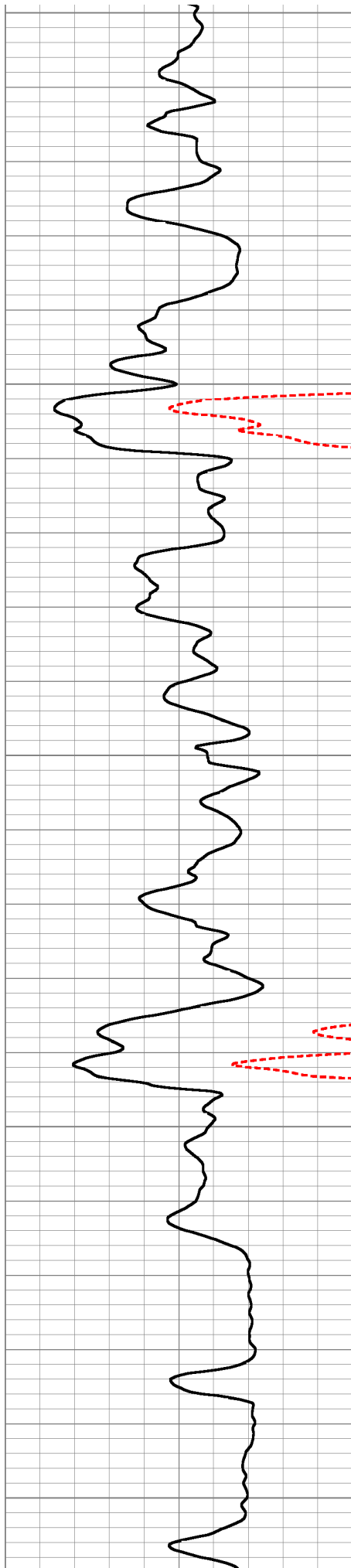
4100

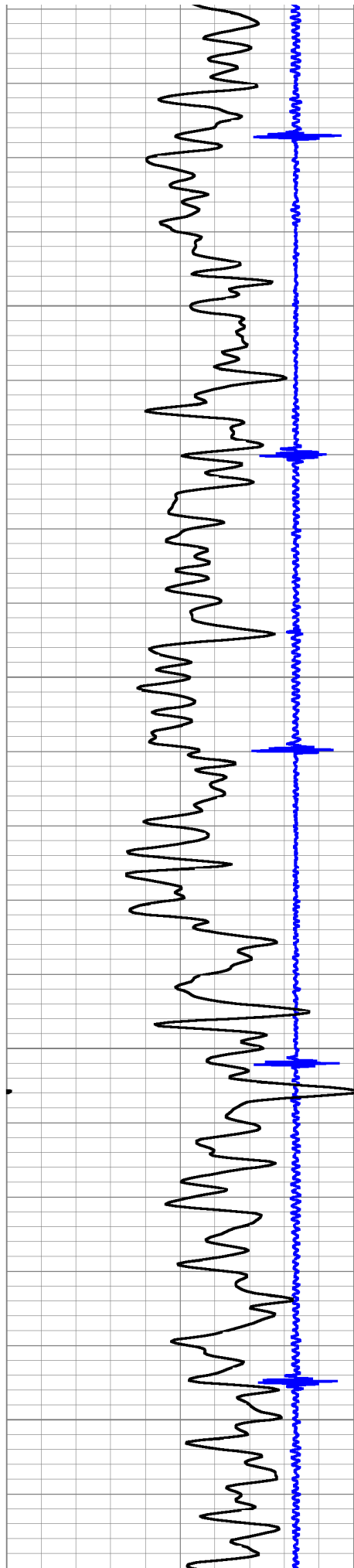
4150

4200

4250

4300



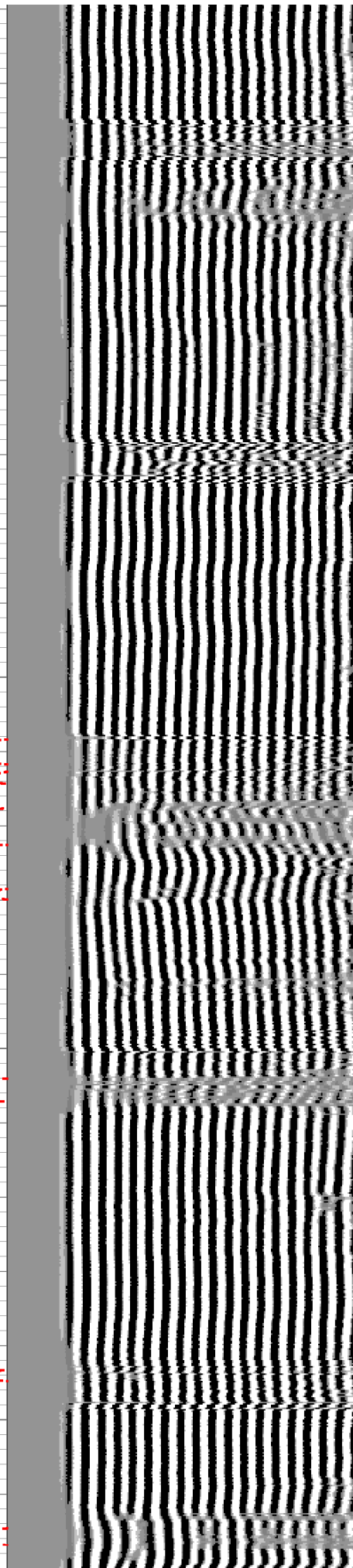
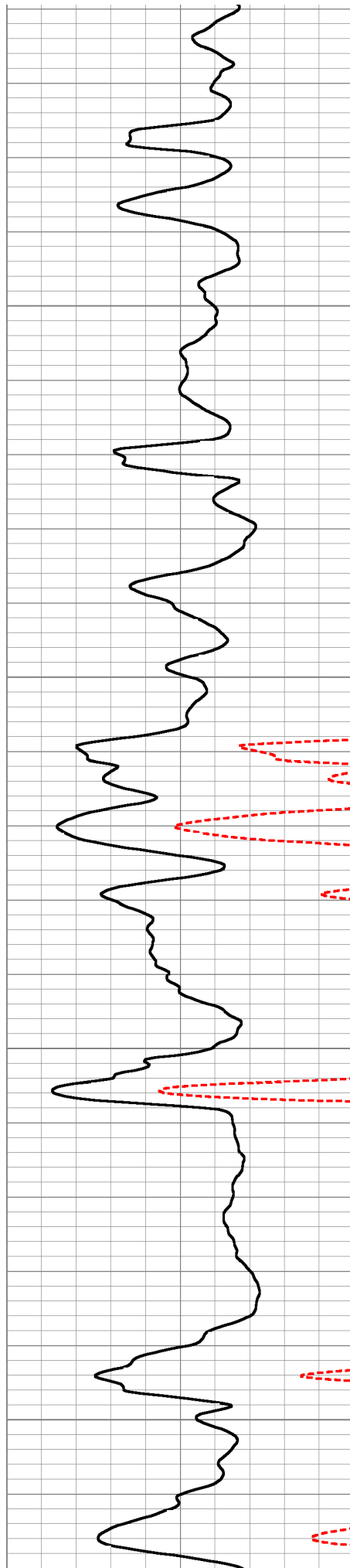


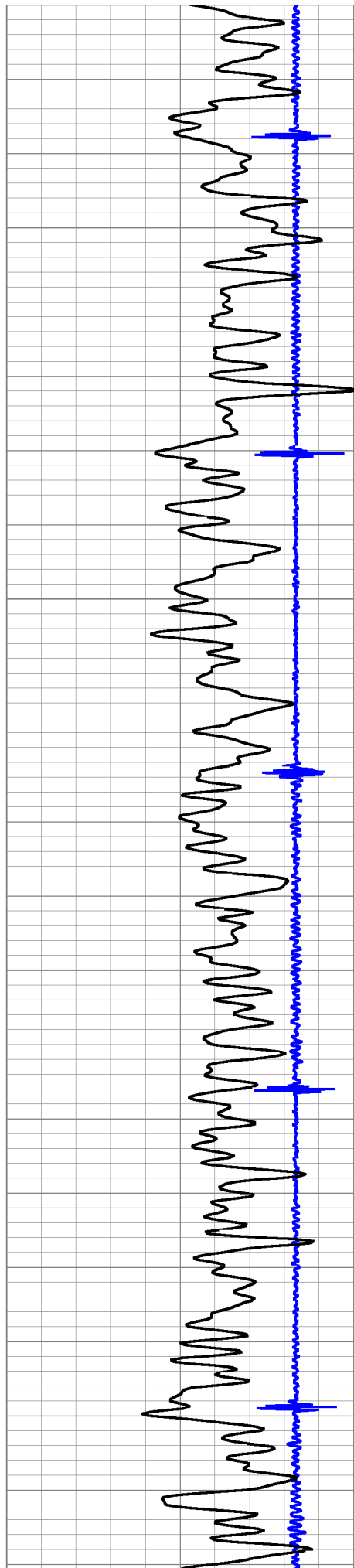
4350

4400

4450

4500



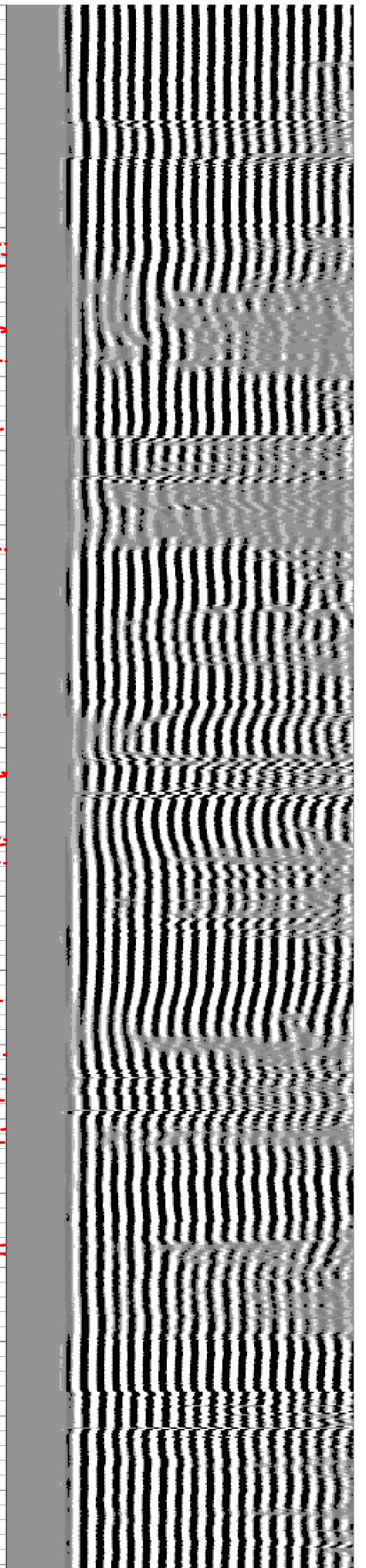
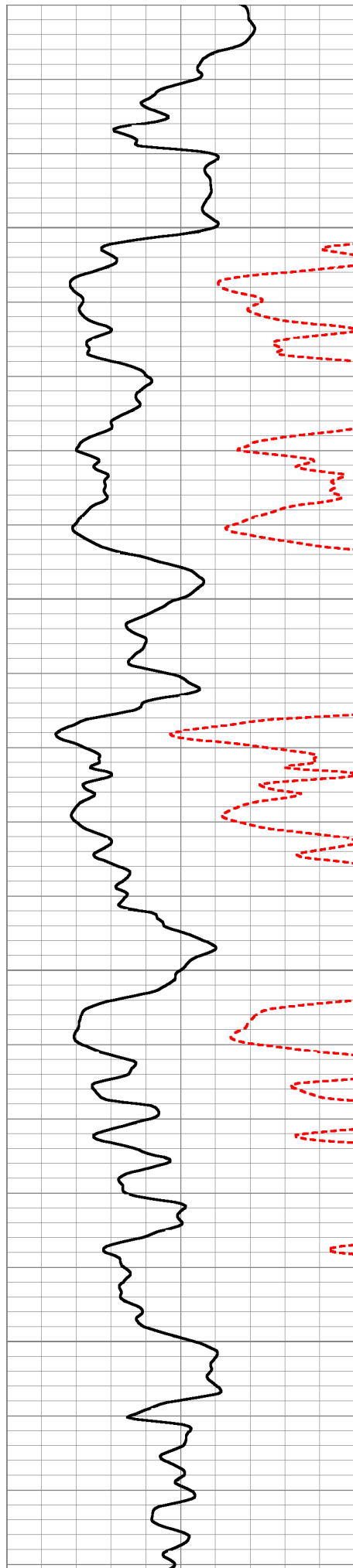


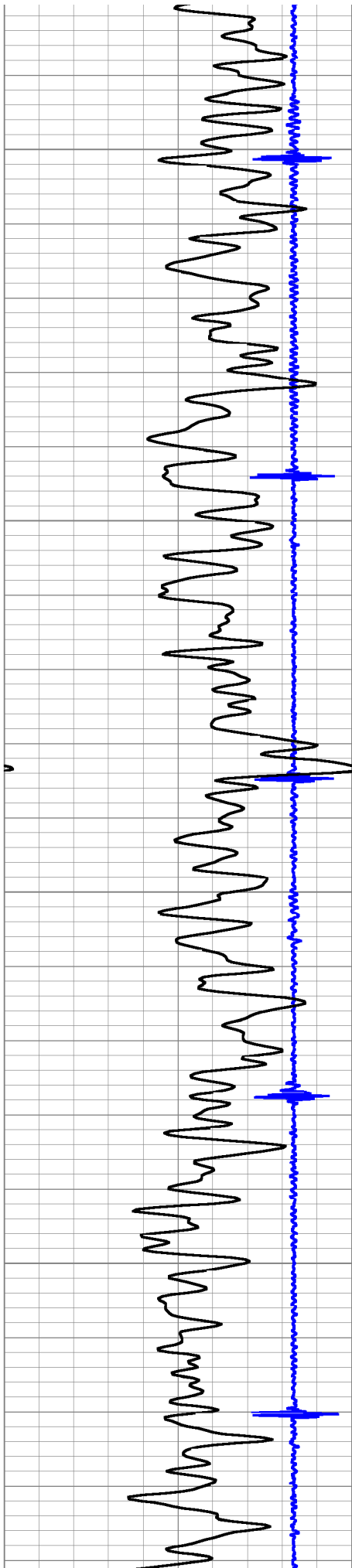
4550

4600

4650

4700



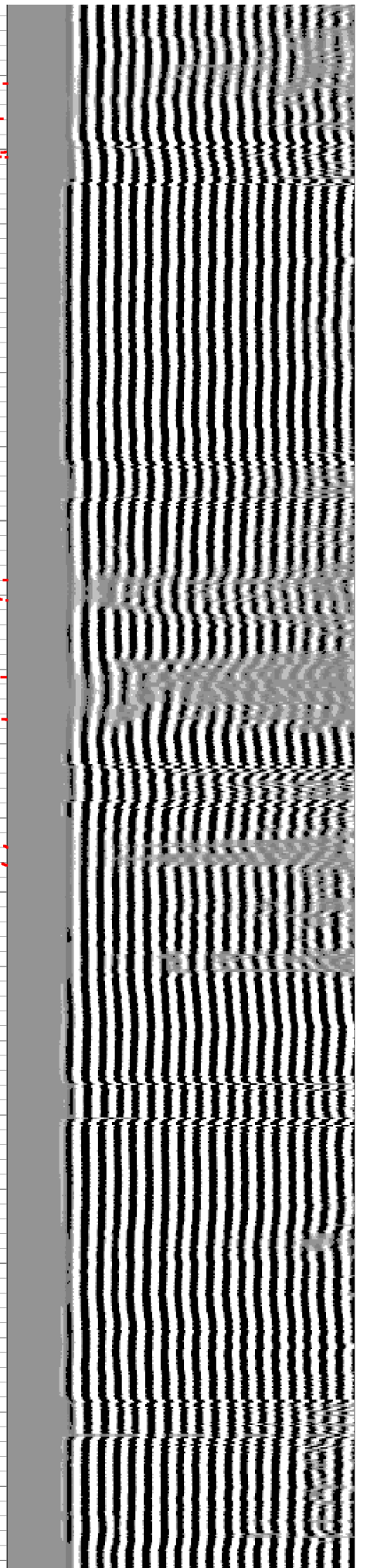
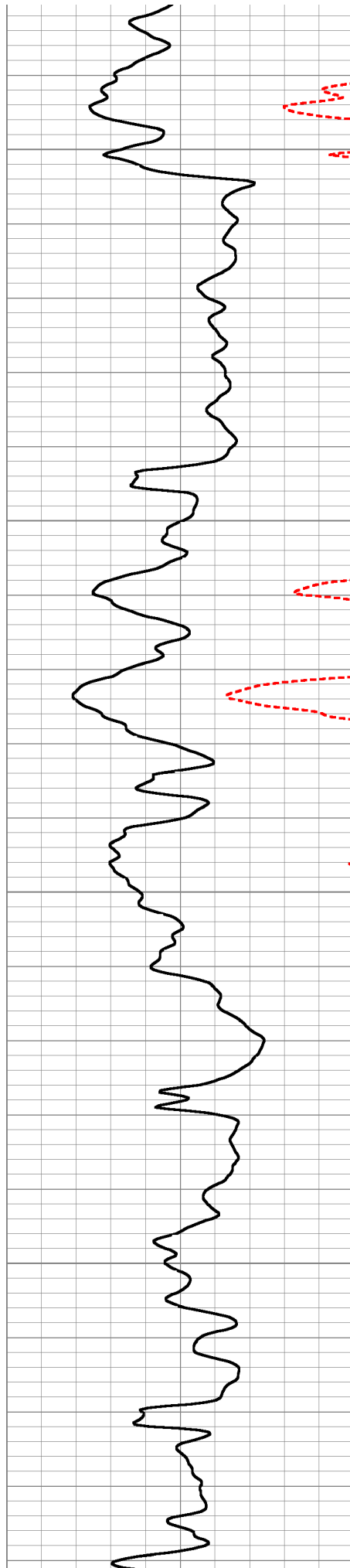


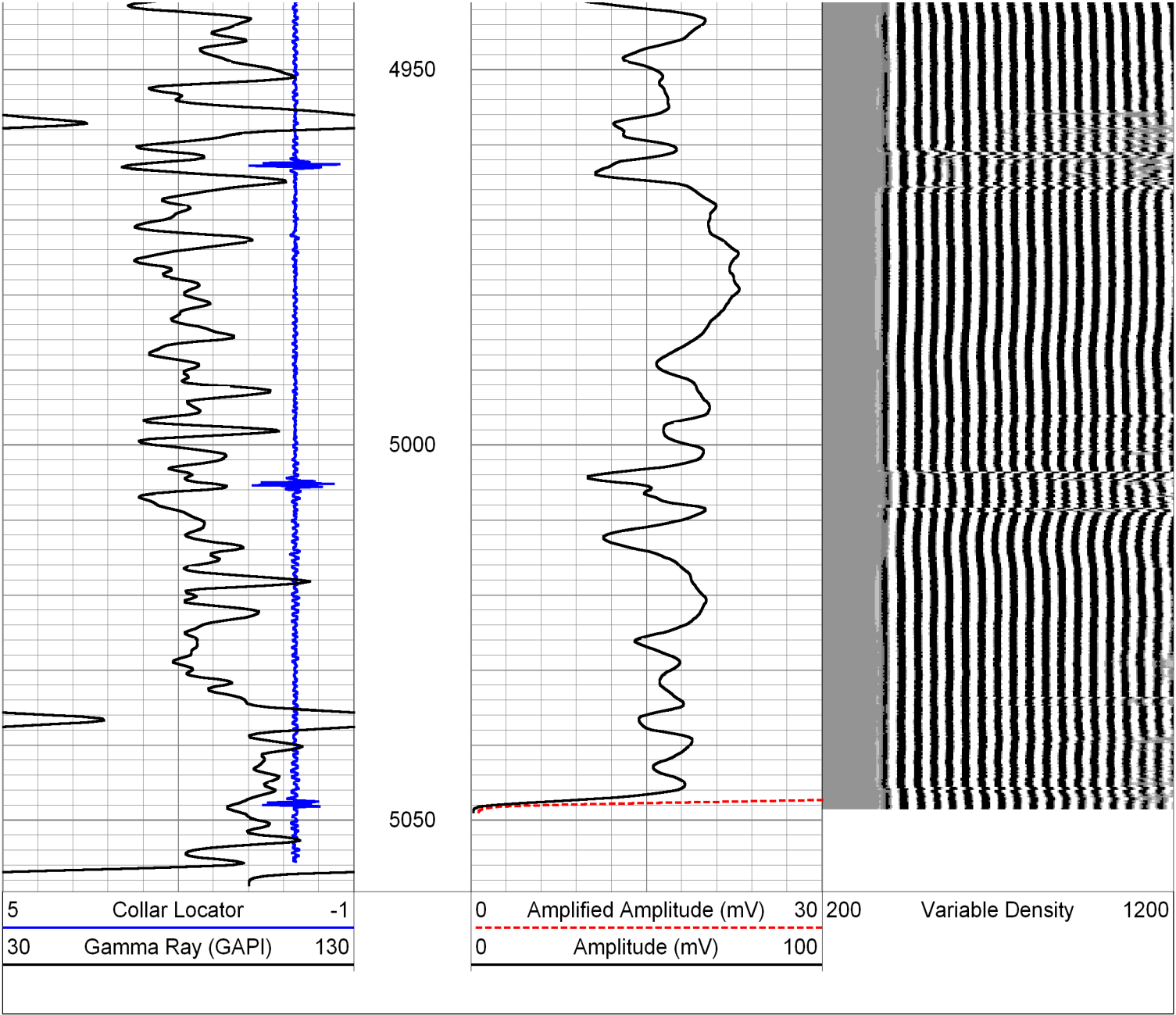
4750

4800

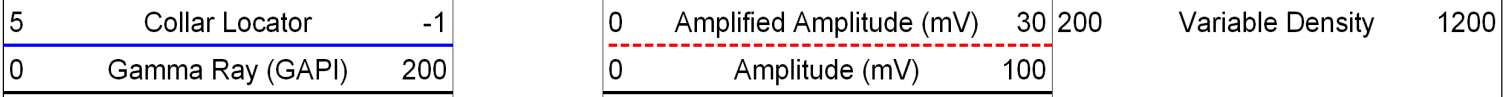
4850

4900





Database File: wells ranch usx aa35-08.db
Dataset Pathname: pass1
Presentation Format: cbldig
Dataset Creation: Mon Jun 16 08:10:19 2008 by Log Halliburton Casedho
Charted by: Depth in Feet scaled 1:240



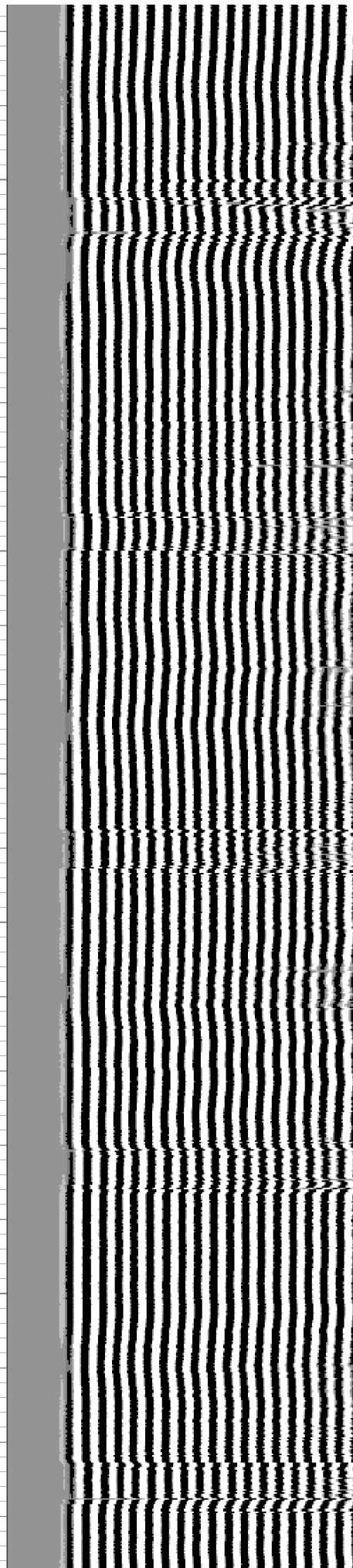
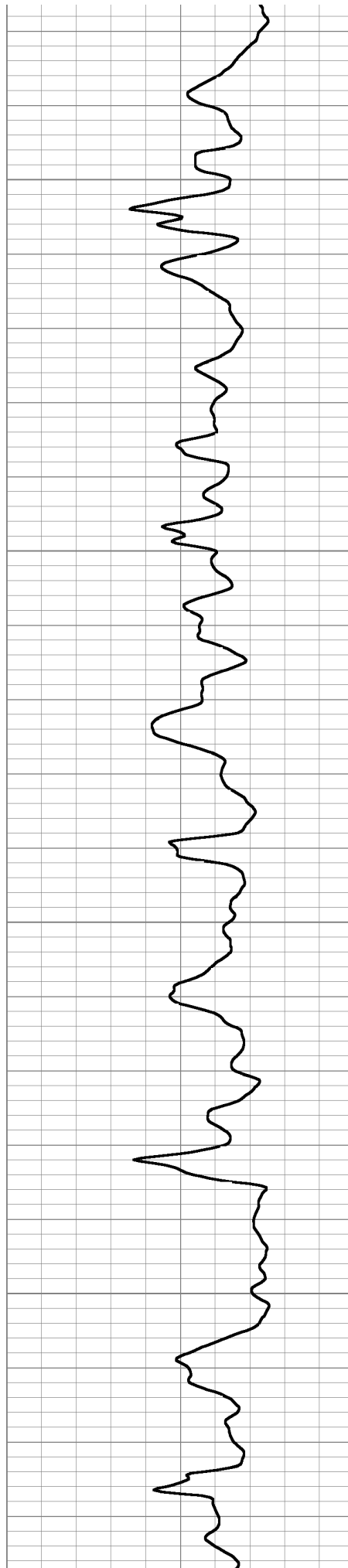


5000

5050

5100

5150



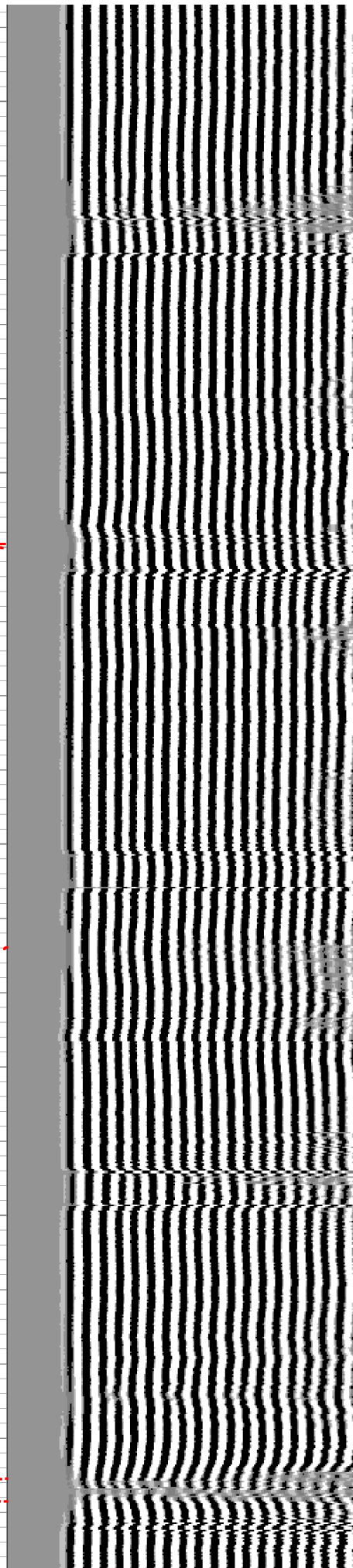
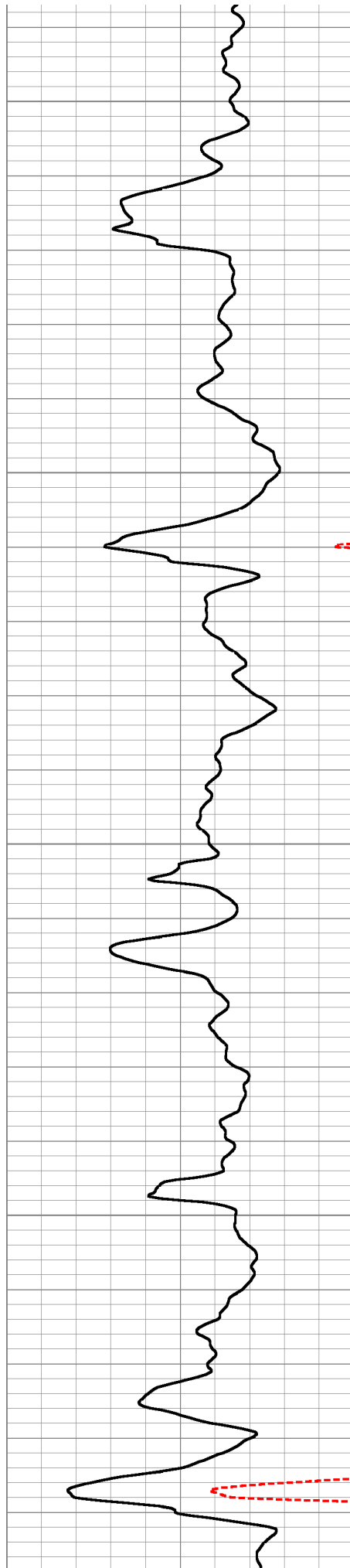


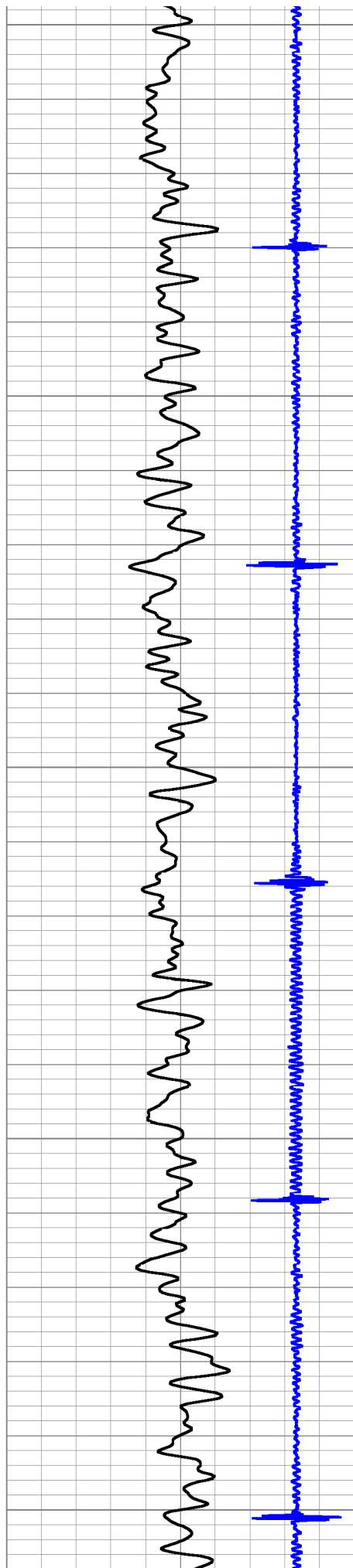
5200

5250

5300

5350





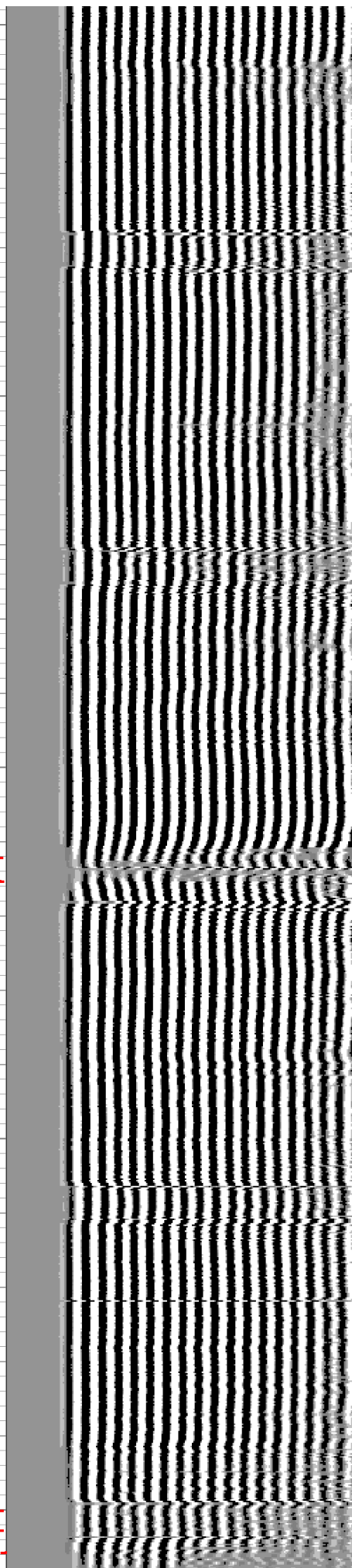
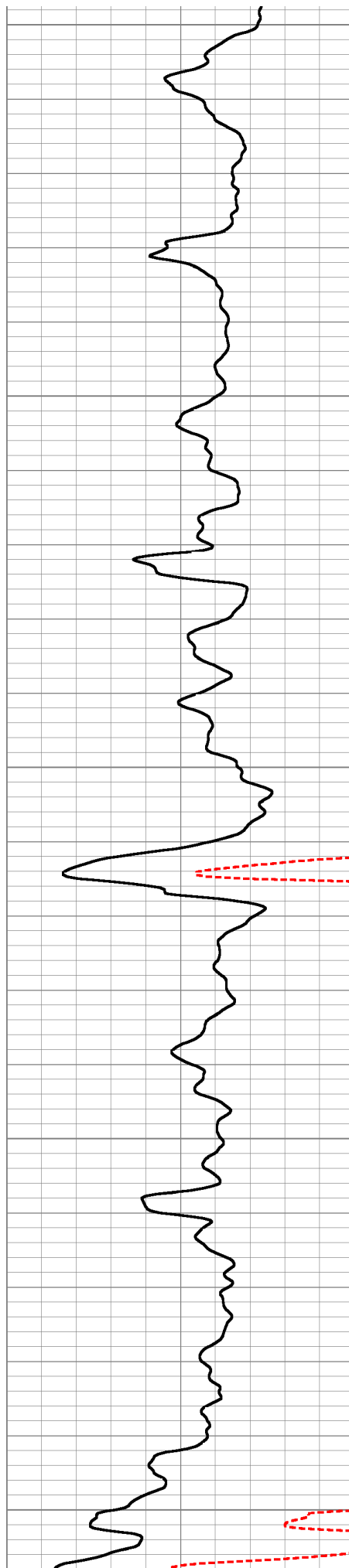
5400

5450

5500

5550

5600



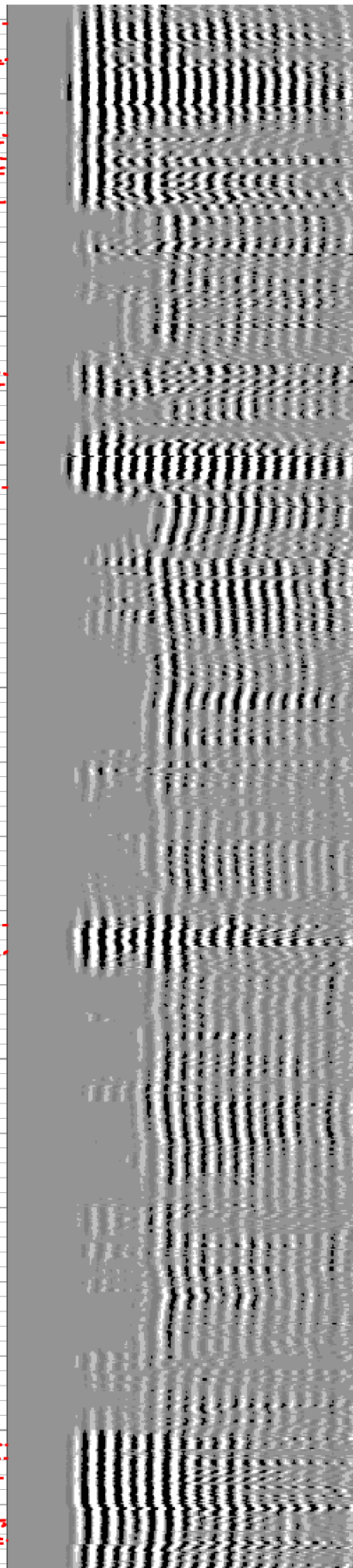
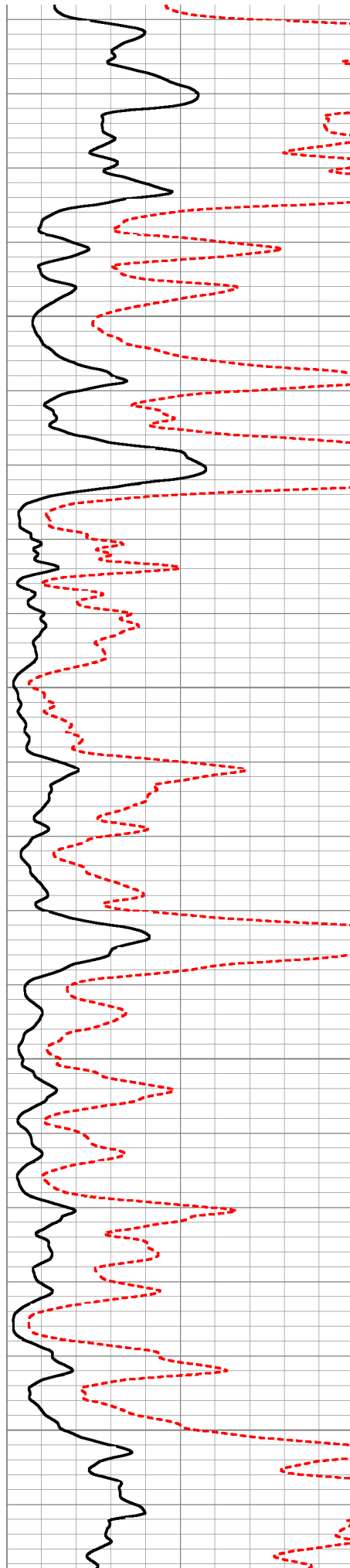


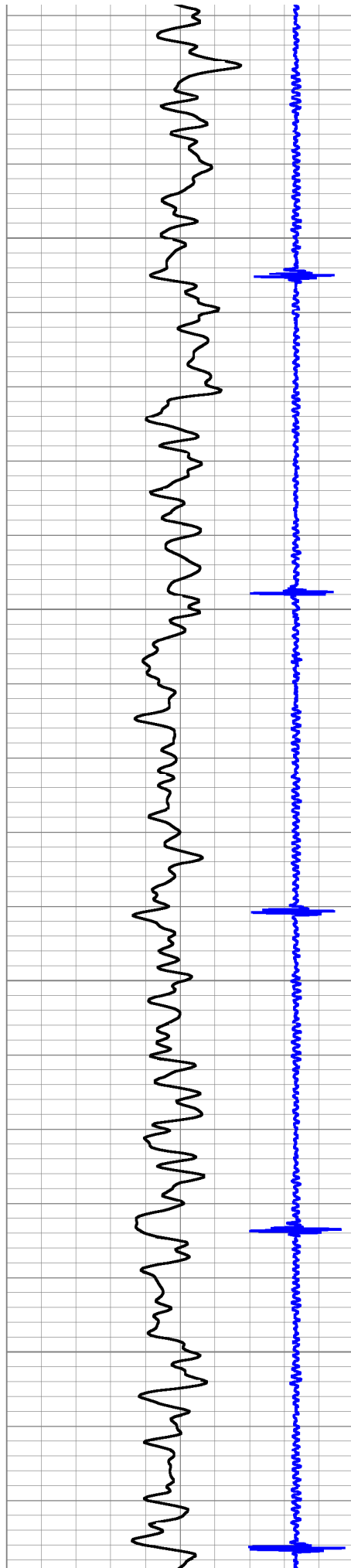
5650

5700

5750

5800



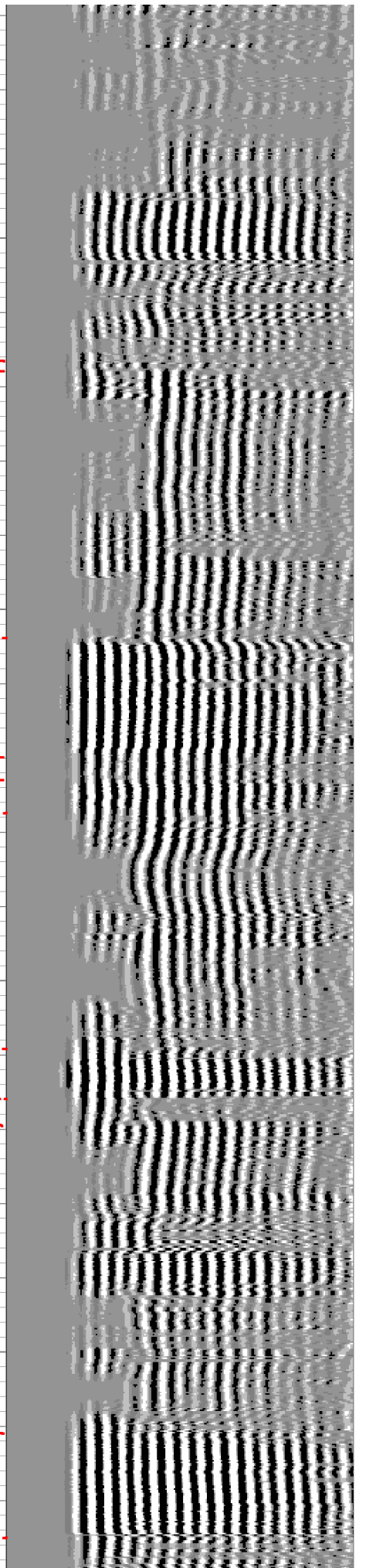
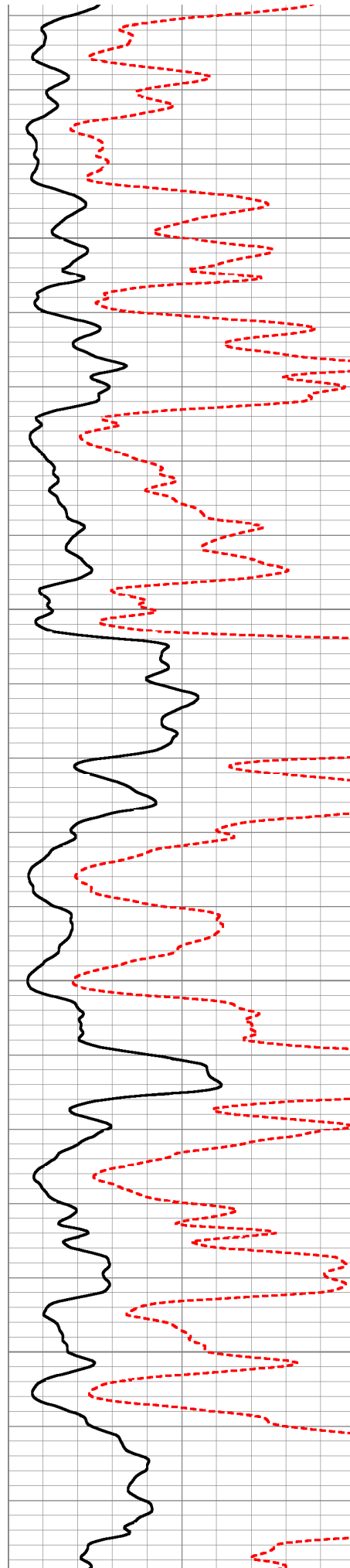


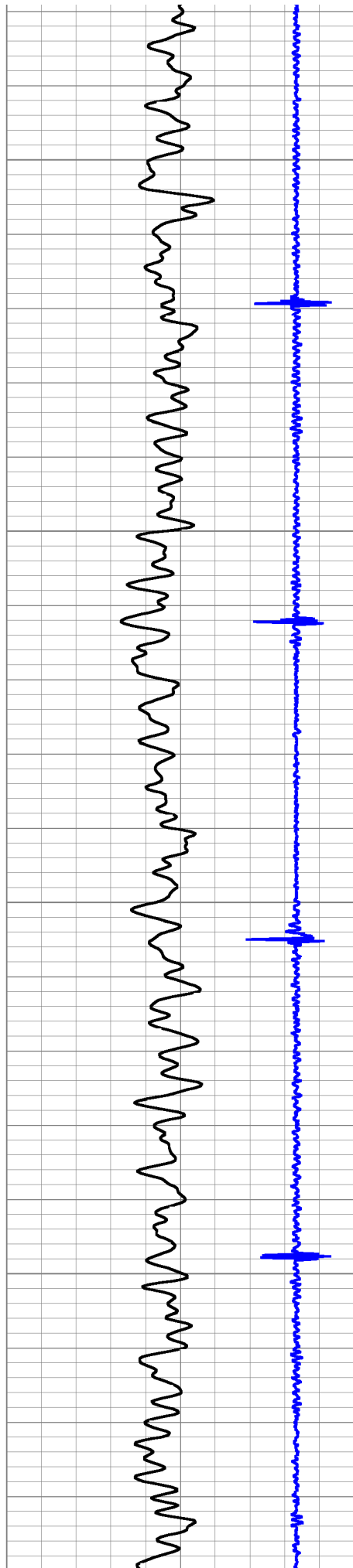
5850

5900

5950

6000



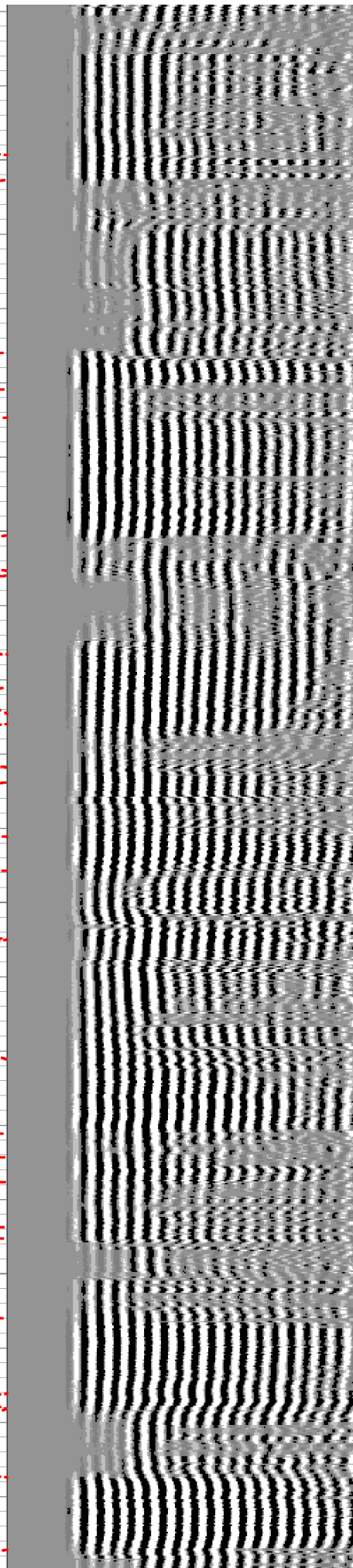
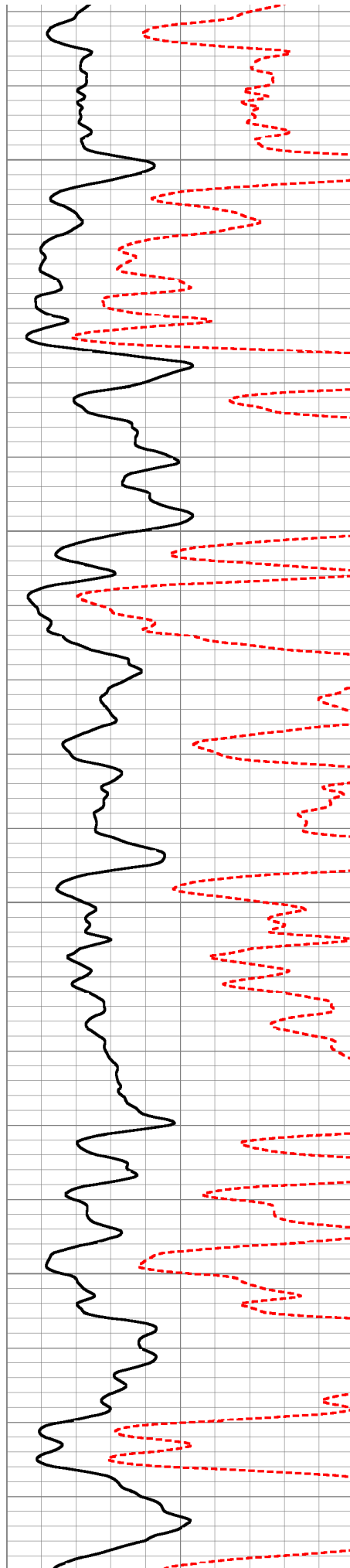


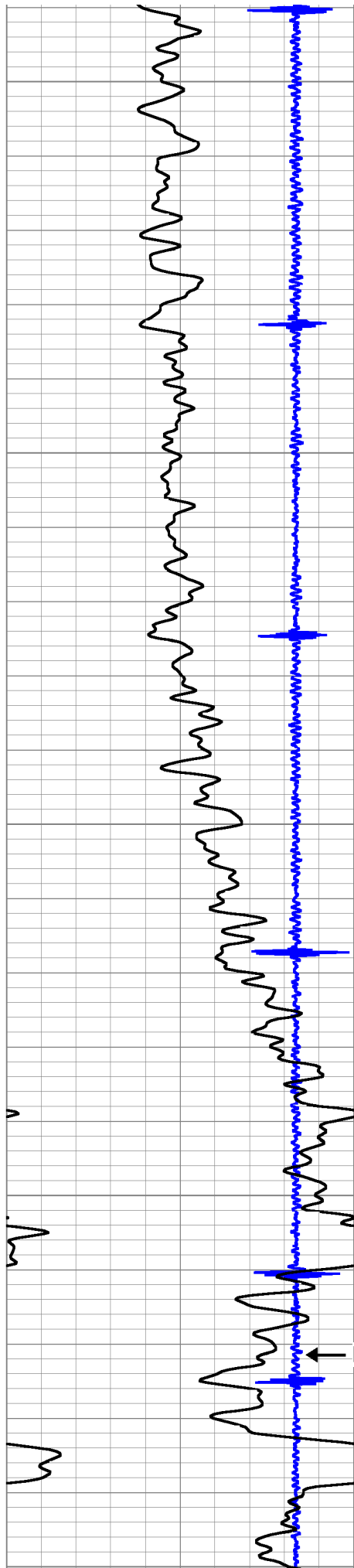
6050

6100

6150

6200





6250

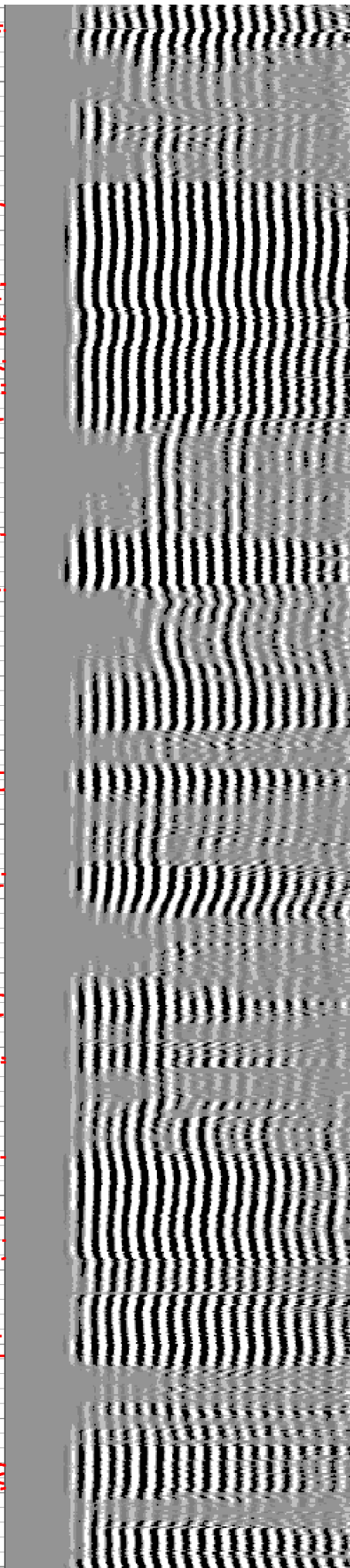
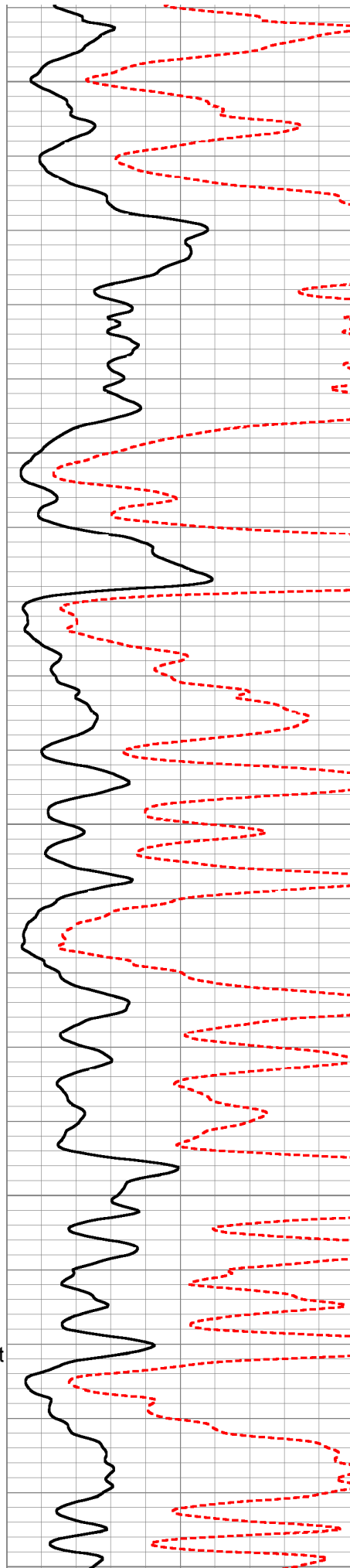
6300

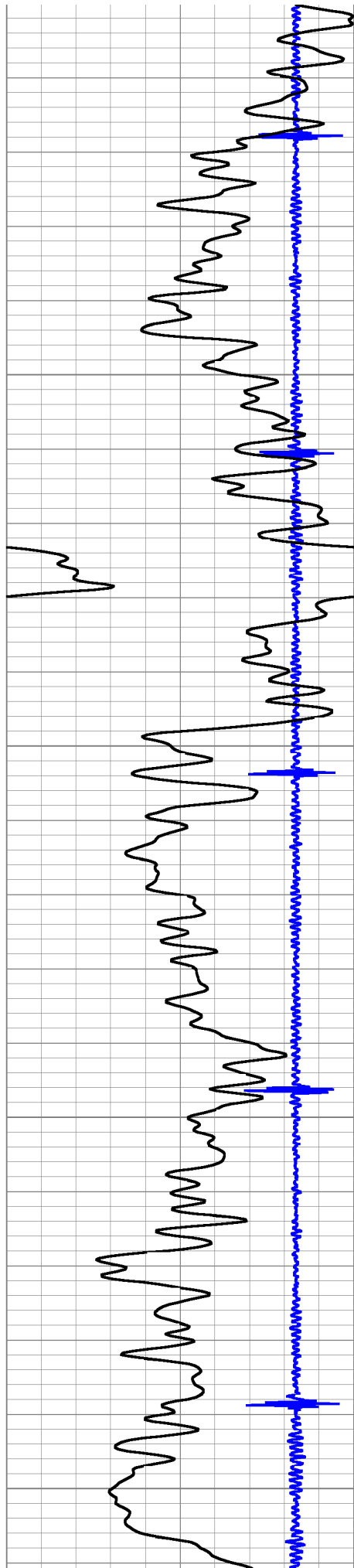
6350

6400

6450

Marker Joint





0.750

6500

6550

6600

6650

