

JW WIRELINE COMPANY

CEMENT BOND LOG  
GR CCL  
VDL

Company ROSETTA RESOURCES OPERATING, LP  
Well WINGFIELD 17-9  
Field WILDCAT

County YUMA State COLORADO

Location: 2017 FSL & 840' FEL  
NE SE  
SEC 17 TWP 2S RGE 44W

Permanent Datum GUL Elevation 3829  
Log Measured From KB  
Drilling Measured From KB

Date DECEMBER 17, 2008  
Run Number 1  
Depth Driller 2400  
Depth Logger 2336  
Bottom Logger 2334  
Top Log Interval 6280  
Open Hole Size 6.25  
Type of Mud Water  
Density / Viscosity  
Max. Recorded Temp. 1380  
Estimated Cement Top ROA

Time Logger on Bottom  
Location YUMA  
Recorded By BRADY DILKA  
Witnessed By RICK KING

Run Number  
Borehole Record  
Bit From To Size Weight From To

Casing Record  
Surface String  
Production String  
Liner

Size  
Yulter  
Top  
Bottom

<<< Fold Here >>>

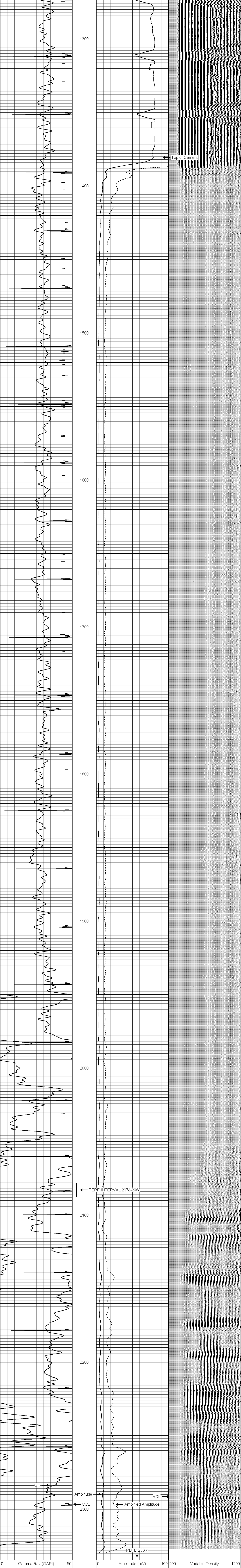
All interpretations are opinions based on inferences from electrical or other measurements and we cannot and do not guarantee the accuracy or correctness of any interpretation, and we shall not, except in the case of gross or willful negligence on our part, be liable or responsible for any loss, costs, damages, or expenses incurred or sustained by anyone resulting from any interpretation made by any of our officers, agents or employees. These interpretations are also subject to our general terms and conditions set out in our current Price Schedule.

Comments

THANK YOU FOR CHOOSING JW WIRELINE  
DEPTH REFERENCE TO DUAL INDUCTION DATED DEC. 13, 2008  
PERF INTERVAL 2078-2088 10' 4 SPF

Database File: wingfield 17-9.db  
Dataset Pathname: pass1  
Presentation Format: cbkx  
Dataset Creation: Wed Dec 17 09:24:26 2008 by Log Std Casedhole 07122  
Charted by: Depth in Feet scaled 1:240

0 Gamma Ray (GAPI) 150  
9 CCL -1  
0 Amplitude (mV) 100 200 Variable Density 1200  
0 Amplified Amplitude (mV) 30



0 Gamma Ray (GAPI) 150  
9 CCL -1  
0 Amplitude (mV) 100 200 Variable Density 1200  
0 Amplified Amplitude (mV) 30