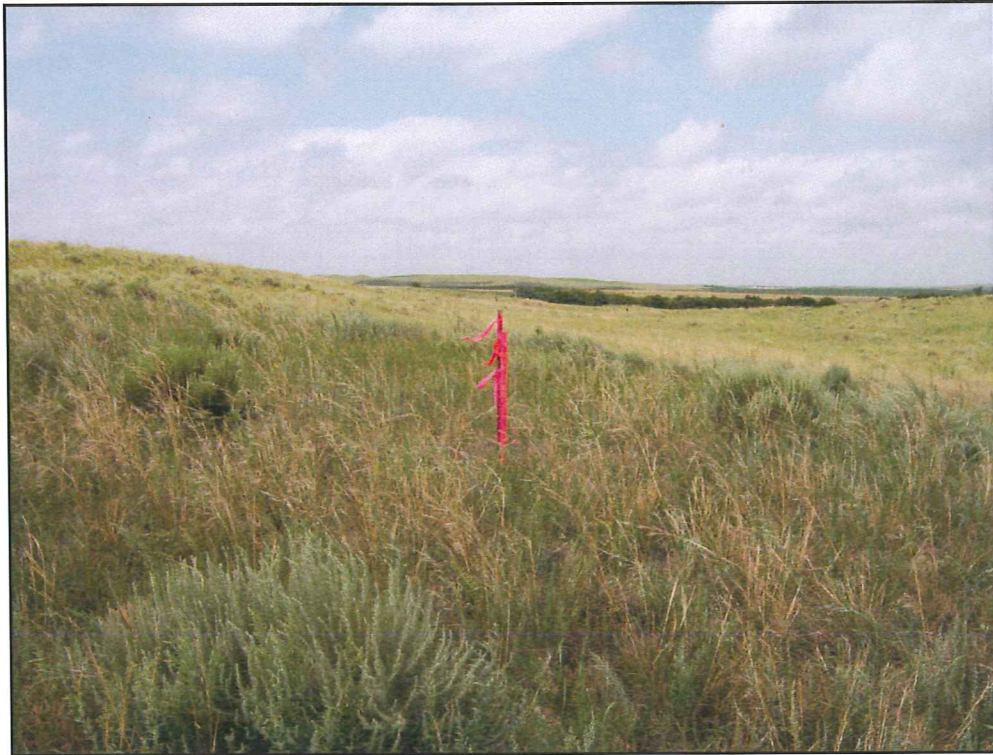


BLACH 21-8B
TOWNSHIP 1 NORTH, RANGE 46 WEST
SECTION 8: NE1/4NW1/4
YUMA COUNTY, COLORADO

WELL FACING NORTH
PICTURE DATED: 7/12/2011



WELL FACING SOUTH
PICTURE DATED: 7/12/2011



BLACH 21-8B
TOWNSHIP 1 NORTH, RANGE 46 WEST
SECTION 8: NE1/4NW1/4
YUMA COUNTY, COLORADO

WELL FACING EAST
PICTURE DATED: 7/12/2011



WELL FACING WEST
PICTURE DATED: 7/12/2011

