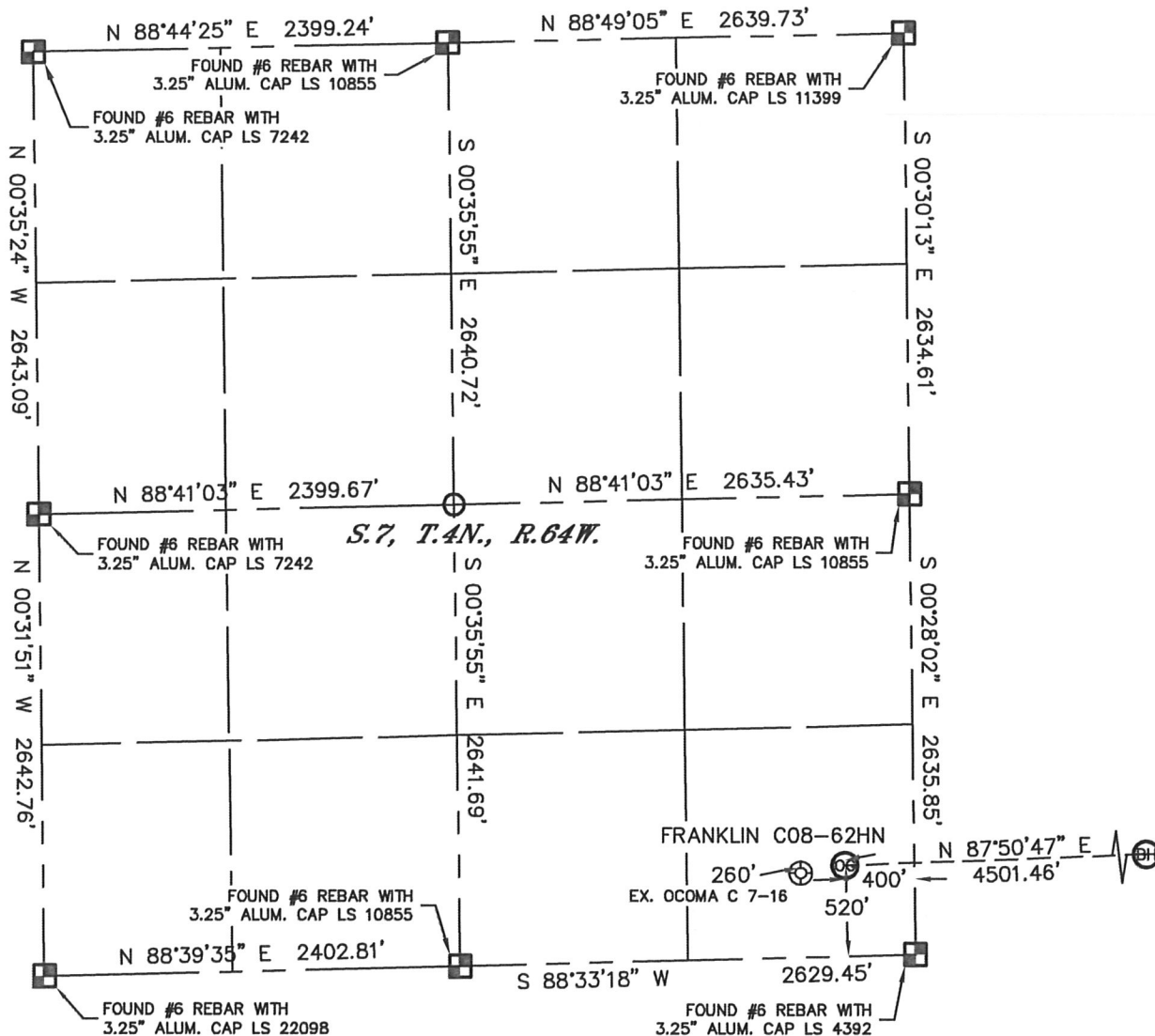


# WELL LOCATION CERTIFICATE

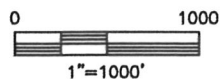
THIS MAP DOES NOT REPRESENT A BOUNDARY SURVEY

SECTION: 7  
TOWNSHIP: 4N  
RANGE: 64W



In accordance with a request from ERIK VAN DECAR with Noble Energy Inc., Lat40°, LLC has determined the surface location of the FRANKLIN COB-62HN to be 520' from the SOUTH line and 400' from the EAST line as measured at right angles from the section lines of Section 7, Township 4 North, Range 64 West and the bottom hole to be 621' from the SOUTH line and 1187' from the EAST line as measured at right angles from the section lines of Section 8, Township 4 North, Range 64 West of the Sixth Principal Meridian, County of Weld, State of Colorado.

I hereby state that this Well Location Certificate was prepared by me, or under my direct supervision, that the fieldwork was completed on 12/1/10, for and on behalf of Noble Energy Inc. That this is not a Land Survey Plat or an Improvement Survey Plat, and that it is not to be relied upon for establishment of fence, building, or other future improvement lines.



## NOTE:

- 1) Bearings shown are Grid Bearings of the Colorado State Plane Coordinate System, North Zone, North American Datum 1983/2007. The lineal dimensions as contained herein are based upon the "U.S. Survey Foot."
- 2) Ground elevations are based on an observed GPS elevation (NAVD 1988 DATUM).
- 3) NEAREST EXISTING WELL: OCOMA C 7-16 260'
- 4) IMPROVEMENTS: See LOCATION DRAWING for all visible improvements within 400' of disturbed area.
- 5) SURFACE USE: PASTURE
- 6) INSTRUMENT OPERATOR: BRIAN BRINKMAN

SURFACE LOCATION  
LATITUDE: 40.32103°N  
LONGITUDE: 104.58544°W  
PDOP: 1.5  
ELEV: 4798  
1/4, 1/4: SE1/4SE1/4  
NEAREST PROPERTY LINE: 400' E

BOTTOM HOLE  
LATITUDE: 40.32137°N  
LONGITUDE: 104.56930°W

## NOTE

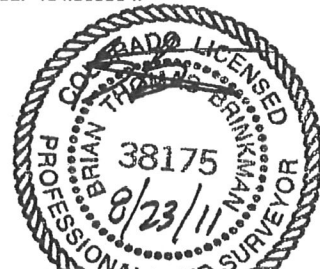
According to Colorado law, you must commence any legal action based upon any defect in this W.L.C. within three years after you discover such defect. In no event, may any action based upon any defect in this survey be commenced more than ten years after the date of the certificate shown hereon. (13-80-105 C.R.S.)

## LEGEND

- = ALIQUOT MONUMENT AS DESCRIBED
- = CALCULATED POSITION

(SHEET 1 OF 2)

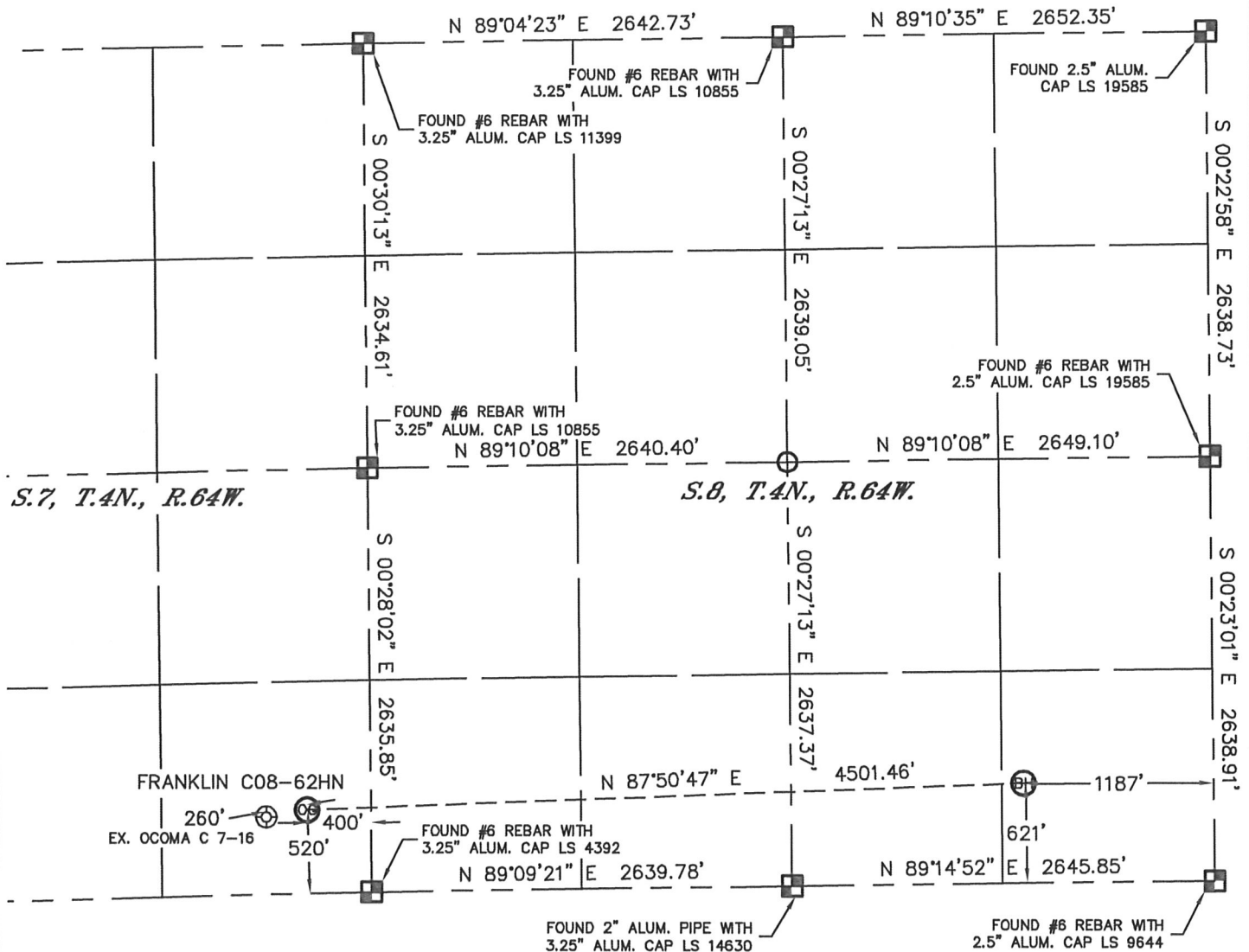
Brian T. Brinkman—On behalf of Lat40°, LLC  
Colorado Licensed Professional  
Land Surveyor No. 38175 PROJECT#: 2010161



# WELL LOCATION CERTIFICATE

THIS MAP DOES NOT REPRESENT A BOUNDARY SURVEY

SECTION: 7  
TOWNSHIP: 4N  
RANGE: 64W

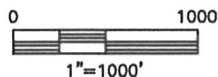


FRANKLIN C08-62HN  
EX. OCOMA C 7-16

FOUND #6 REBAR WITH  
3.25" ALUM. CAP LS 4392

FOUND 2" ALUM. PIPE WITH  
3.25" ALUM. CAP LS 14630

FOUND #6 REBAR WITH  
2.5" ALUM. CAP LS 9644



## NOTE

According to Colorado law, you must commence any legal action based upon any defect in this W.L.C. within three years after you discover such defect. In no event, may any action based upon any defect in this survey be commenced more than ten years after the date of the certificate shown hereon. (13-80-105 C.R.S.)

## LEGEND

- = ALIQUOT MONUMENT AS DESCRIBED
- = CALCULATED POSITION



(SHEET 2 OF 2)

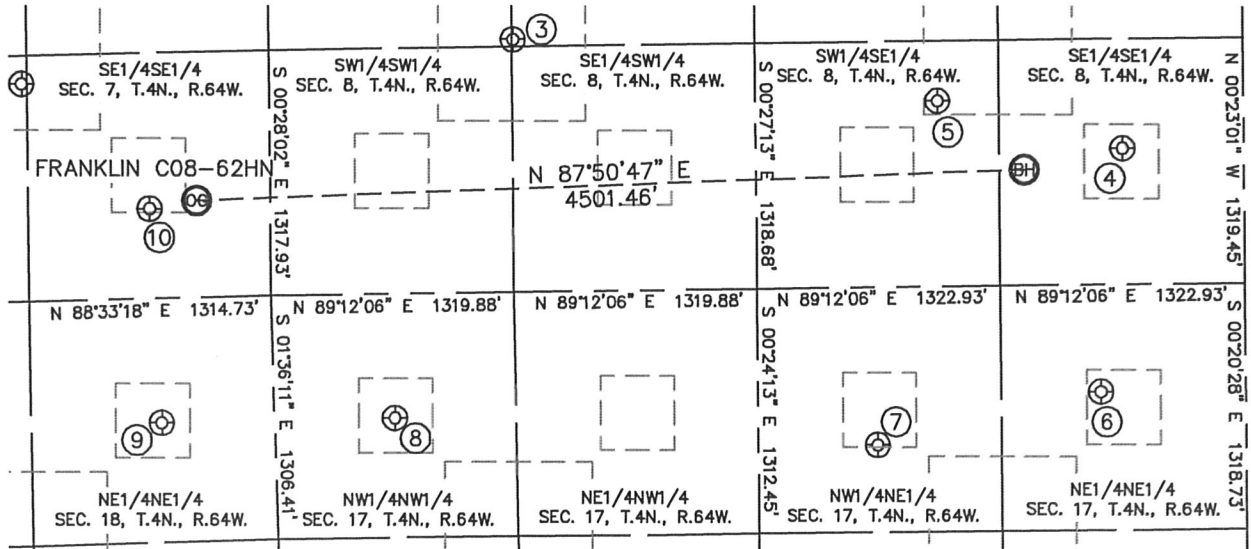
Brian T. Brinkman—On behalf of Lat40°, LLC  
Colorado Licensed Professional  
Land Surveyor No. 38175 PROJECT#: 2010161

Lat40°, LLC 1635 Foxtrail Drive, Suite 325 Loveland, CO 80538

# SITE SKETCH

FRANKLIN C08-62HN

SECTION: 7  
TOWNSHIP: 4N  
RANGE: 64W



- |   |  |  |  |
|---|--|--|--|
| ③<br>ENGLAND 8-35<br>NE1/4SW1/4<br>1357' FSL<br>1327' FWL<br>LAT-40.32336°N<br>LONG-104.57924°W<br>PDOP: 1.9<br>ELEV: 4798    | ④<br>GEHRING 1<br>SE1/4SE1/4<br>730' FSL<br>656' FEL<br>LAT-40.32167°N<br>LONG-104.56740°W<br>PDOP: 1.8<br>ELEV: 4718              | ⑤<br>GEHRING 8-1514<br>SW1/4SE1/4<br>996' FSL<br>1655' FEL<br>LAT-40.32239°N<br>LONG-104.57098°W<br>PDOP: 1.7<br>ELEV: 4734  | ⑥<br>CPC-HARLESS 17-1<br>NE1/4NE1/4<br>574' FNL<br>783' FEL<br>LAT-40.31809°N<br>LONG-104.56787°W<br>PDOP: 3.6<br>ELEV: 4711 |
| ⑦<br>HARLESS PM C17-2<br>NW1/4NE1/4<br>845' FNL<br>1996' FEL<br>LAT-40.31734°N<br>LONG-104.57223°W<br>PDOP: 3.2<br>ELEV: 4728 | ⑧<br>SANDY HILL FARMS C17-4<br>NW1/4NW1/4<br>666' FNL<br>653' FWL<br>LAT-40.31780°N<br>LONG-104.58162°W<br>PDOP: 1.7<br>ELEV: 4766 | ⑨<br>MARY MILLS 41-18<br>NE1/4NE1/4<br>667' FNL<br>614' FEL<br>LAT-40.31777°N<br>LONG-104.58617°W<br>PDOP: 1.3<br>ELEV: 4783 | ⑩<br>OCOMA C 7-16<br>SE1/4SE1/4<br>482' FSL<br>656' FEL<br>LAT-40.32092°N<br>LONG-104.58636°W<br>PDOP: 4.1<br>ELEV: 4802     |

