

# **BILL BARRETT CORP**

**GARFIELD COUNTY, COLORADO NAD 1983**

**Dixon SWNW-23-692**

**Dixon Federal 12D-23-692**

**Wellbore #1**

**Plan: Design #1**

## **Standard Planning Report**

**04 August, 2011**

# Bill Barrett Corp

## Planning Report

<b>Database:</b>	Compass	<b>Local Co-ordinate Reference:</b>	Well Dixon Federal 12D-23-692
<b>Company:</b>	BILL BARRETT CORP	<b>TVD Reference:</b>	WELL @ 5815.00ft (Original Well Elev)
<b>Project:</b>	GARFIELD COUNTY, COLORADO NAD 1983	<b>MD Reference:</b>	WELL @ 5815.00ft (Original Well Elev)
<b>Site:</b>	Dixon SWNW-23-692	<b>North Reference:</b>	True
<b>Well:</b>	Dixon Federal 12D-23-692	<b>Survey Calculation Method:</b>	Minimum Curvature
<b>Wellbore:</b>	Wellbore #1		
<b>Design:</b>	Design #1		

<b>Project</b>	GARFIELD COUNTY, COLORADO NAD 1983		
<b>Map System:</b>	US State Plane 1983	<b>System Datum:</b>	Mean Sea Level
<b>Geo Datum:</b>	North American Datum 1983		
<b>Map Zone:</b>	Colorado Central Zone		

<b>Site</b>	Dixon SWNW-23-692		
<b>Site Position:</b>		<b>Northing:</b>	1,620,383.301 ft
<b>From:</b>	Lat/Long	<b>Easting:</b>	2,395,551.941 ft
<b>Position Uncertainty:</b>	0.00 ft	<b>Slot Radius:</b>	"
		<b>Latitude:</b>	39° 31' 1.780 N
		<b>Longitude:</b>	107° 38' 33.9108 W
		<b>Grid Convergence:</b>	-1.35 °

<b>Well</b>	Dixon Federal 12D-23-692		
<b>Well Position</b>	<b>+N/-S</b>	-521.24 ft	<b>Northing:</b>
	<b>+E/-W</b>	94.23 ft	<b>Easting:</b>
<b>Position Uncertainty</b>		0.00 ft	<b>Wellhead Elevation:</b>
			ft
			<b>Latitude:</b>
			39° 30' 56.628 N
			<b>Longitude:</b>
			107° 38' 32.7084 W
			<b>Ground Level:</b>
			0.00 ft

<b>Wellbore</b>	Wellbore #1				
<b>Magnetics</b>	<b>Model Name</b>	<b>Sample Date</b>	<b>Declination (°)</b>	<b>Dip Angle (°)</b>	<b>Field Strength (nT)</b>
	IGRF200510	12/31/2009	10.36	65.87	52,483

<b>Design</b>	Design #1			
<b>Audit Notes:</b>				
<b>Version:</b>	<b>Phase:</b>	PROTOTYPE	<b>Tie On Depth:</b>	0.00
<b>Vertical Section:</b>	<b>Depth From (TVD) (ft)</b>	<b>+N/-S (ft)</b>	<b>+E/-W (ft)</b>	<b>Direction (°)</b>
	0.00	0.00	0.00	94.32

<b>Plan Sections</b>										
<b>Measured Depth (ft)</b>	<b>Inclination (°)</b>	<b>Azimuth (°)</b>	<b>Vertical Depth (ft)</b>	<b>+N/-S (ft)</b>	<b>+E/-W (ft)</b>	<b>Dogleg Rate (°/100ft)</b>	<b>Build Rate (°/100ft)</b>	<b>Turn Rate (°/100ft)</b>	<b>TFO (°)</b>	<b>Target</b>
0.00	0.00	0.00	0.00	0.00	0.00	0.00	0.00	0.00	0.00	
800.00	0.00	0.00	800.00	0.00	0.00	0.00	0.00	0.00	0.00	
944.50	3.61	94.32	944.40	-0.34	4.54	2.50	2.50	0.00	94.32	
5,426.33	3.61	94.32	5,417.33	-21.64	286.12	0.00	0.00	0.00	0.00	
5,667.16	0.00	0.00	5,658.00	-22.21	293.69	1.50	-1.50	0.00	180.00	
7,667.16	0.00	0.00	7,658.00	-22.21	293.69	0.00	0.00	0.00	0.00	Dixon Federal 12D-

# Bill Barrett Corp

## Planning Report

<b>Database:</b>	Compass	<b>Local Co-ordinate Reference:</b>	Well Dixon Federal 12D-23-692
<b>Company:</b>	BILL BARRETT CORP	<b>TVD Reference:</b>	WELL @ 5815.00ft (Original Well Elev)
<b>Project:</b>	GARFIELD COUNTY, COLORADO NAD 1983	<b>MD Reference:</b>	WELL @ 5815.00ft (Original Well Elev)
<b>Site:</b>	Dixon SWNW-23-692	<b>North Reference:</b>	True
<b>Well:</b>	Dixon Federal 12D-23-692	<b>Survey Calculation Method:</b>	Minimum Curvature
<b>Wellbore:</b>	Wellbore #1		
<b>Design:</b>	Design #1		

Planned Survey										
Measured Depth (ft)	Inclination (°)	Azimuth (°)	Vertical Depth (ft)	+N/-S (ft)	+E/-W (ft)	Vertical Section (ft)	Dogleg Rate (°/100ft)	Build Rate (°/100ft)	Turn Rate (°/100ft)	
0.00	0.00	0.00	0.00	0.00	0.00	0.00	0.00	0.00	0.00	
100.00	0.00	0.00	100.00	0.00	0.00	0.00	0.00	0.00	0.00	
200.00	0.00	0.00	200.00	0.00	0.00	0.00	0.00	0.00	0.00	
300.00	0.00	0.00	300.00	0.00	0.00	0.00	0.00	0.00	0.00	
400.00	0.00	0.00	400.00	0.00	0.00	0.00	0.00	0.00	0.00	
500.00	0.00	0.00	500.00	0.00	0.00	0.00	0.00	0.00	0.00	
600.00	0.00	0.00	600.00	0.00	0.00	0.00	0.00	0.00	0.00	
700.00	0.00	0.00	700.00	0.00	0.00	0.00	0.00	0.00	0.00	
800.00	0.00	0.00	800.00	0.00	0.00	0.00	0.00	0.00	0.00	
900.00	2.50	94.32	899.97	-0.16	2.18	2.18	2.50	2.50	0.00	
944.50	3.61	94.32	944.40	-0.34	4.54	4.55	2.50	2.50	0.00	
1,000.00	3.61	94.32	999.79	-0.61	8.03	8.05	0.00	0.00	0.00	
1,100.00	3.61	94.32	1,099.60	-1.08	14.31	14.35	0.00	0.00	0.00	
1,200.00	3.61	94.32	1,199.40	-1.56	20.59	20.65	0.00	0.00	0.00	
1,300.00	3.61	94.32	1,299.20	-2.03	26.88	26.95	0.00	0.00	0.00	
1,400.00	3.61	94.32	1,399.00	-2.51	33.16	33.25	0.00	0.00	0.00	
1,500.00	3.61	94.32	1,498.80	-2.98	39.44	39.55	0.00	0.00	0.00	
1,600.00	3.61	94.32	1,598.60	-3.46	45.72	45.85	0.00	0.00	0.00	
1,700.00	3.61	94.32	1,698.40	-3.93	52.01	52.16	0.00	0.00	0.00	
1,800.00	3.61	94.32	1,798.20	-4.41	58.29	58.46	0.00	0.00	0.00	
1,900.00	3.61	94.32	1,898.01	-4.88	64.57	64.76	0.00	0.00	0.00	
2,000.00	3.61	94.32	1,997.81	-5.36	70.85	71.06	0.00	0.00	0.00	
2,100.00	3.61	94.32	2,097.61	-5.83	77.14	77.36	0.00	0.00	0.00	
2,200.00	3.61	94.32	2,197.41	-6.31	83.42	83.66	0.00	0.00	0.00	
2,300.00	3.61	94.32	2,297.21	-6.78	89.70	89.96	0.00	0.00	0.00	
2,400.00	3.61	94.32	2,397.01	-7.26	95.99	96.26	0.00	0.00	0.00	
2,500.00	3.61	94.32	2,496.81	-7.73	102.27	102.56	0.00	0.00	0.00	
2,600.00	3.61	94.32	2,596.61	-8.21	108.55	108.86	0.00	0.00	0.00	
2,700.00	3.61	94.32	2,696.42	-8.68	114.83	115.16	0.00	0.00	0.00	
2,800.00	3.61	94.32	2,796.22	-9.16	121.12	121.46	0.00	0.00	0.00	
2,900.00	3.61	94.32	2,896.02	-9.63	127.40	127.76	0.00	0.00	0.00	
3,000.00	3.61	94.32	2,995.82	-10.11	133.68	134.06	0.00	0.00	0.00	
3,100.00	3.61	94.32	3,095.62	-10.58	139.96	140.36	0.00	0.00	0.00	
3,200.00	3.61	94.32	3,195.42	-11.06	146.25	146.66	0.00	0.00	0.00	
3,300.00	3.61	94.32	3,295.22	-11.53	152.53	152.97	0.00	0.00	0.00	
3,400.00	3.61	94.32	3,395.03	-12.01	158.81	159.27	0.00	0.00	0.00	
3,500.00	3.61	94.32	3,494.83	-12.48	165.10	165.57	0.00	0.00	0.00	
3,600.00	3.61	94.32	3,594.63	-12.96	171.38	171.87	0.00	0.00	0.00	
3,700.00	3.61	94.32	3,694.43	-13.43	177.66	178.17	0.00	0.00	0.00	
3,800.00	3.61	94.32	3,794.23	-13.91	183.94	184.47	0.00	0.00	0.00	
3,900.00	3.61	94.32	3,894.03	-14.38	190.23	190.77	0.00	0.00	0.00	
4,000.00	3.61	94.32	3,993.83	-14.86	196.51	197.07	0.00	0.00	0.00	
4,100.00	3.61	94.32	4,093.63	-15.33	202.79	203.37	0.00	0.00	0.00	
4,200.00	3.61	94.32	4,193.44	-15.81	209.07	209.67	0.00	0.00	0.00	
4,300.00	3.61	94.32	4,293.24	-16.28	215.36	215.97	0.00	0.00	0.00	
4,400.00	3.61	94.32	4,393.04	-16.76	221.64	222.27	0.00	0.00	0.00	
4,500.00	3.61	94.32	4,492.84	-17.24	227.92	228.57	0.00	0.00	0.00	
4,600.00	3.61	94.32	4,592.64	-17.71	234.21	234.87	0.00	0.00	0.00	
4,700.00	3.61	94.32	4,692.44	-18.19	240.49	241.17	0.00	0.00	0.00	
4,800.00	3.61	94.32	4,792.24	-18.66	246.77	247.48	0.00	0.00	0.00	
4,900.00	3.61	94.32	4,892.05	-19.14	253.05	253.78	0.00	0.00	0.00	
5,000.00	3.61	94.32	4,991.85	-19.61	259.34	260.08	0.00	0.00	0.00	
5,100.00	3.61	94.32	5,091.65	-20.09	265.62	266.38	0.00	0.00	0.00	

# Bill Barrett Corp

## Planning Report

<b>Database:</b>	Compass	<b>Local Co-ordinate Reference:</b>	Well Dixon Federal 12D-23-692
<b>Company:</b>	BILL BARRETT CORP	<b>TVD Reference:</b>	WELL @ 5815.00ft (Original Well Elev)
<b>Project:</b>	GARFIELD COUNTY, COLORADO NAD 1983	<b>MD Reference:</b>	WELL @ 5815.00ft (Original Well Elev)
<b>Site:</b>	Dixon SWNW-23-692	<b>North Reference:</b>	True
<b>Well:</b>	Dixon Federal 12D-23-692	<b>Survey Calculation Method:</b>	Minimum Curvature
<b>Wellbore:</b>	Wellbore #1		
<b>Design:</b>	Design #1		

### Planned Survey

Measured Depth (ft)	Inclination (°)	Azimuth (°)	Vertical Depth (ft)	+N/-S (ft)	+E/-W (ft)	Vertical Section (ft)	Dogleg Rate (°/100ft)	Build Rate (°/100ft)	Turn Rate (°/100ft)
5,200.00	3.61	94.32	5,191.45	-20.56	271.90	272.68	0.00	0.00	0.00
5,300.00	3.61	94.32	5,291.25	-21.04	278.18	278.98	0.00	0.00	0.00
5,400.00	3.61	94.32	5,391.05	-21.51	284.47	285.28	0.00	0.00	0.00
5,426.33	3.61	94.32	5,417.33	-21.64	286.12	286.94	0.00	0.00	0.00
5,500.00	2.51	94.32	5,490.89	-21.93	290.04	290.87	1.50	-1.50	0.00
5,600.00	1.01	94.32	5,590.84	-22.16	293.10	293.94	1.50	-1.50	0.00
5,667.16	0.00	0.00	5,658.00	-22.21	293.69	294.53	1.50	-1.50	0.00
5,700.00	0.00	0.00	5,690.84	-22.21	293.69	294.53	0.00	0.00	0.00
5,800.00	0.00	0.00	5,790.84	-22.21	293.69	294.53	0.00	0.00	0.00
5,900.00	0.00	0.00	5,890.84	-22.21	293.69	294.53	0.00	0.00	0.00
6,000.00	0.00	0.00	5,990.84	-22.21	293.69	294.53	0.00	0.00	0.00
6,100.00	0.00	0.00	6,090.84	-22.21	293.69	294.53	0.00	0.00	0.00
6,200.00	0.00	0.00	6,190.84	-22.21	293.69	294.53	0.00	0.00	0.00
6,300.00	0.00	0.00	6,290.84	-22.21	293.69	294.53	0.00	0.00	0.00
6,400.00	0.00	0.00	6,390.84	-22.21	293.69	294.53	0.00	0.00	0.00
6,500.00	0.00	0.00	6,490.84	-22.21	293.69	294.53	0.00	0.00	0.00
6,600.00	0.00	0.00	6,590.84	-22.21	293.69	294.53	0.00	0.00	0.00
6,700.00	0.00	0.00	6,690.84	-22.21	293.69	294.53	0.00	0.00	0.00
6,800.00	0.00	0.00	6,790.84	-22.21	293.69	294.53	0.00	0.00	0.00
6,900.00	0.00	0.00	6,890.84	-22.21	293.69	294.53	0.00	0.00	0.00
7,000.00	0.00	0.00	6,990.84	-22.21	293.69	294.53	0.00	0.00	0.00
7,100.00	0.00	0.00	7,090.84	-22.21	293.69	294.53	0.00	0.00	0.00
7,200.00	0.00	0.00	7,190.84	-22.21	293.69	294.53	0.00	0.00	0.00
7,300.00	0.00	0.00	7,290.84	-22.21	293.69	294.53	0.00	0.00	0.00
7,400.00	0.00	0.00	7,390.84	-22.21	293.69	294.53	0.00	0.00	0.00
7,500.00	0.00	0.00	7,490.84	-22.21	293.69	294.53	0.00	0.00	0.00
7,600.00	0.00	0.00	7,590.84	-22.21	293.69	294.53	0.00	0.00	0.00
7,667.16	0.00	0.00	7,658.00	-22.21	293.69	294.53	0.00	0.00	0.00

### Casing Points

Measured Depth (ft)	Vertical Depth (ft)	Name	Casing Diameter (")	Hole Diameter (")
770.00	770.00	9 5/8"	9-5/8	12-1/4

### Formations

Measured Depth (ft)	Vertical Depth (ft)	Name	Lithology	Dip (°)	Dip Direction (°)
3,733.64	3,728.00	Mesaverde		0.00	
4,645.45	4,638.00	Price Coal		0.00	
5,401.95	5,393.00	Top Gas		0.00	
7,367.16	7,358.00	Rollins		0.00	
7,667.16	7,658.00	TD		0.00	

## WELL DETAILS: Dixon Federal 12D-23-692

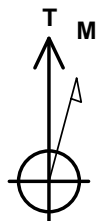
+N/-S	+E/-W	Northing	Easting	Ground Level: 0.00	Latitude	Longitude	Slot
0.00	0.00	1619859.985	2395633.851	39° 30' 56.628 N	107° 38' 32.7084 W		

## SECTION DETAILS

Sec	MD	Inc	Azi	TVD	+N/-S	+E/-W	DLeg	TFace	VSec	Target
1	0.00	0.00	0.00	0.00	0.00	0.00	0.00	0.00	0.00	
2	800.00	0.00	0.00	800.00	0.00	0.00	0.00	0.00	0.00	
3	944.50	3.61	94.32	944.40	-0.34	4.54	2.50	94.32	4.55	
4	5426.33	3.61	94.32	5417.33	-21.64	286.12	0.00	0.00	286.94	
5	5667.16	0.00	0.00	5658.00	-22.21	293.69	1.50	180.00	294.53	
6	7667.16	0.00	0.00	7658.00	-22.21	293.69	0.00	0.00	294.53	Dixon Federal 12D-23-692 (TD)

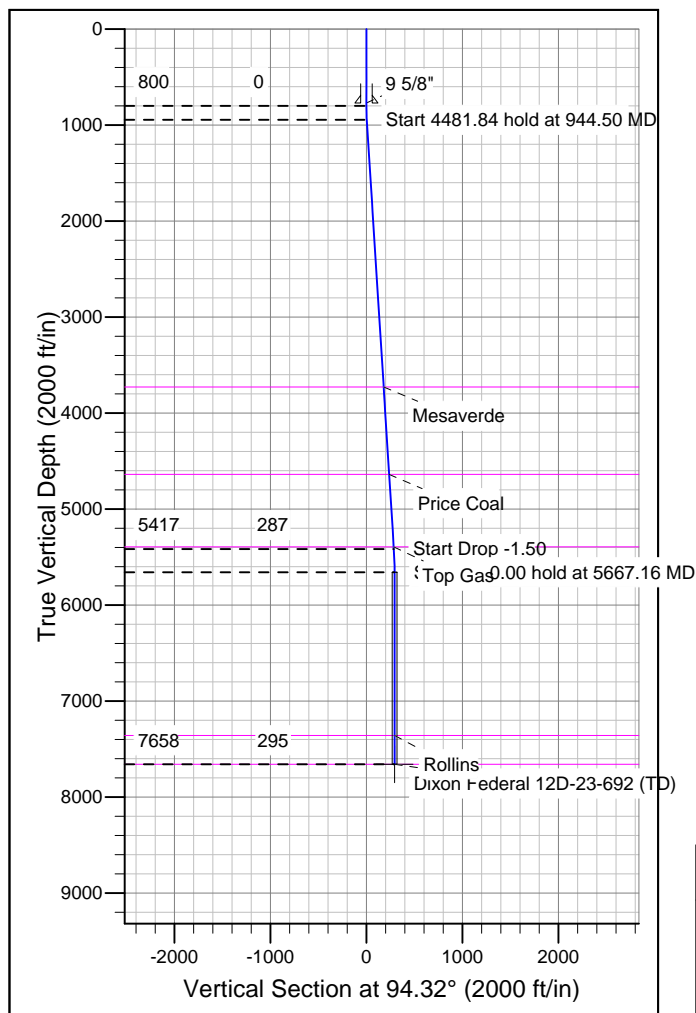
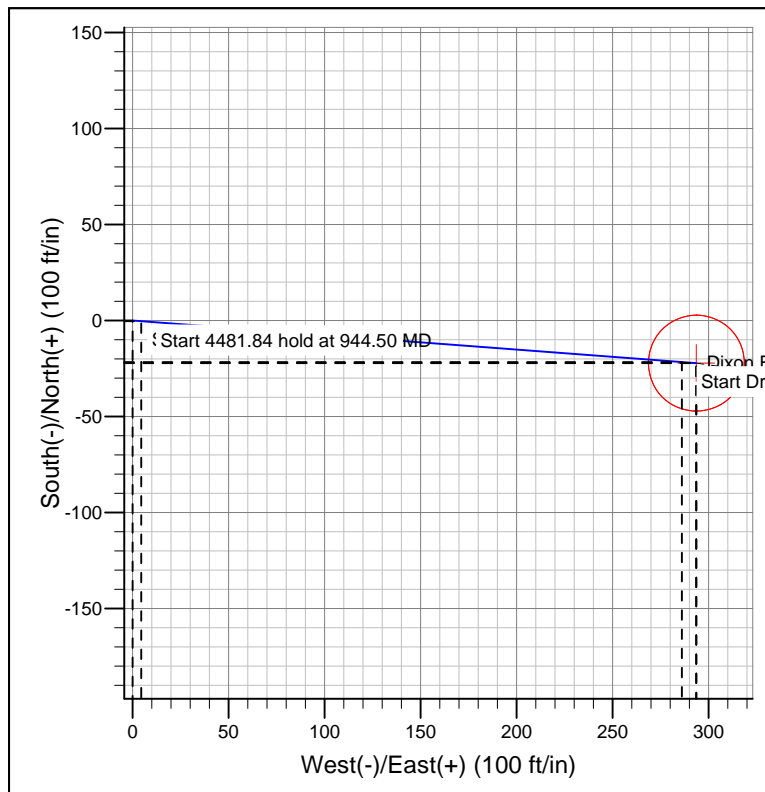
## WELLBORE TARGET DETAILS

Name	TVD	+N/-S	+E/-W	Shape
Dixon Federal 12D-23-692 (TD)	-22.21	293.69	Circle (Radius: 25.00)	



Azimuths to True North  
Magnetic North: 10.36°

Magnetic Field  
Strength: 52483.2snT  
Dip Angle: 65.87°  
Date: 12/31/2009  
Model: IGRF200510



## FORMATION TOP DETAILS

TVDPath	MDPath	Formation
3728.00	3733.64	Mesaverde
4638.00	4645.45	Price Coal
5393.00	5401.95	Top Gas
7358.00	7367.16	Rollins
7658.00	7667.16	TD

## REFERENCE INFORMATION

Co-ordinate (N/E) Reference: Well Dixon Federal 12D-23-692, True North  
Vertical (TVD) Reference: WELL @ 5815.00ft (Original Well Elev)  
Section (VS) Reference: Slot - (0.00N, 0.00E)  
Measured Depth Reference: WELL @ 5815.00ft (Original Well Elev)  
Calculation Method: Minimum Curvature