

Steil Surveying Services, LLC

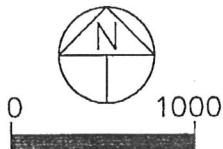
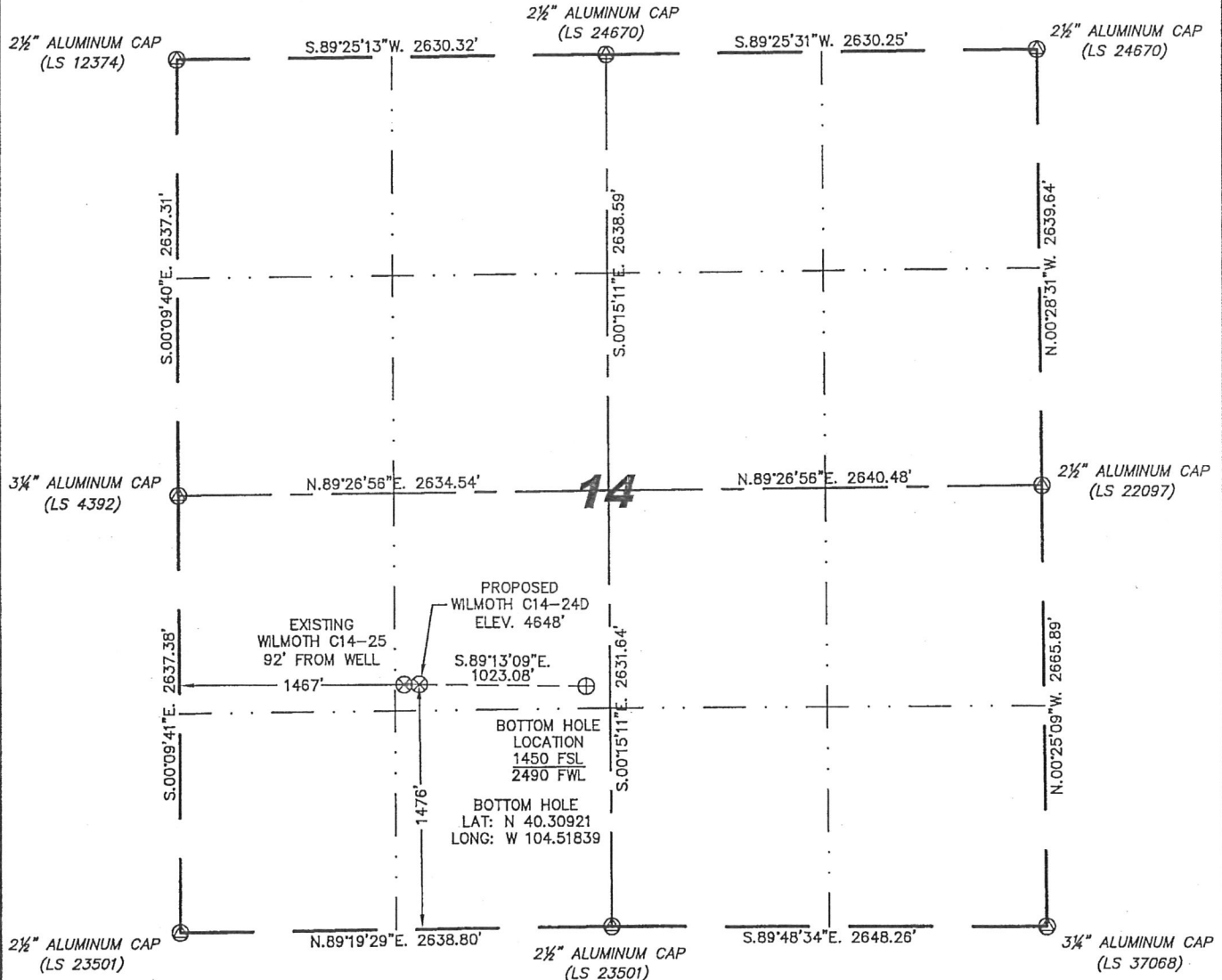
1102 West 19th Street P.O. BOX 2073

Cheyenne, Wyoming 82001

WELL LOCATION CERTIFICATE

THIS MAP DOES NOT REPRESENT A BOUNDARY SURVEY

SECTION 14
TOWNSHIP 4 NORTH
RANGE 64 WEST



IN ACCORDANCE WITH A REQUEST FROM MIKE RODINE - NOBLE ENERGY INC, STEIL SURVEYING SERVICES, LLC HAS DETERMINED THE LOCATION OF THE WILMOTH C14-24D WELL TO BE 1476' FSL, 1467' FWL, AS MEASURED AT NINETY (90) DEGREES FROM THE SECTION LINES, SECTION 14, TOWNSHIP 4 NORTH, RANGE 64 WEST, 6TH PRINCIPLE MERIDIAN, WELD COUNTY, COLORADO.

I HEREBY CERTIFY THAT THIS WELL LOCATION CERTIFICATE WAS PREPARED BY ME, OR UNDER MY DIRECT SUPERVISION, THAT THE FIELD WORK WAS COMPLETED ON 04/18/2011, FOR AND ON BEHALF OF NOBLE ENERGY INC, THAT IT IS NOT A LAND SURVEY PLAT OR AN IMPROVEMENT SURVEY PLAT, AND THAT IT IS NOT TO BE RELIED UPON FOR ESTABLISHMENT OF FENCE, BUILDING, OR OTHER FUTURE IMPROVEMENT LINES.



NOTES:

- 1) BASIS OF BEARINGS FOR THIS MAP ARE BASED UPON GPS OBSERVATIONS MADE ON 10/12/2010 BETWEEN MONUMENTS LOCATED AT THE SOUTHEAST SECTION CORNER AND THE NORTHEAST SECTION CORNER OF SAID SECTION AND WITH ALL BEARINGS SHOWN HEREON RELATIVE THERETO.
- 2) COORDINATES SHOWN ARE COLORADO STATE PLANE (NORTH ZONE) NAD 83
- 3) ELEVATIONS ARE BASED UPON NGS OPUS SOLUTION NAVD 88 DATUM.
- 4) THE NEAREST EXISTING WELL IS: WILMOTH C14-25, 92' WEST.
- 5) SEE LOCATION DRAWING FOR ALL IMPROVEMENTS WITHIN VISIBLE IMPROVEMENT LIMIT.
- 6) THE LOCATION FALLS IN IRRIGATED CROP LAND.

LATITUDE & LONGITUDE (NAD 83 SURFACE HOLE):

LATITUDE: N 40.30928°
LONGITUDE: W 104.52206°
PDOP: 1.9
QUARTER-QUARTER: NE/4SW/4
NEAREST PROPERTY LINE: 159' SOUTH

LEGEND

- (A) FOUND SURVEY MONUMENT PER MONUMENT RECORD - EXCEPTIONS NOTED.
- (C) CALCULATED DIMENSION

NOTICE: According to Colorado law you MUST commence any legal action based upon any defect in this W.L.C. within three years after you first discover such defect. In no event may any action based upon any defect in this W.L.C. be commenced more than ten years from this said date of the certification shown hereon.

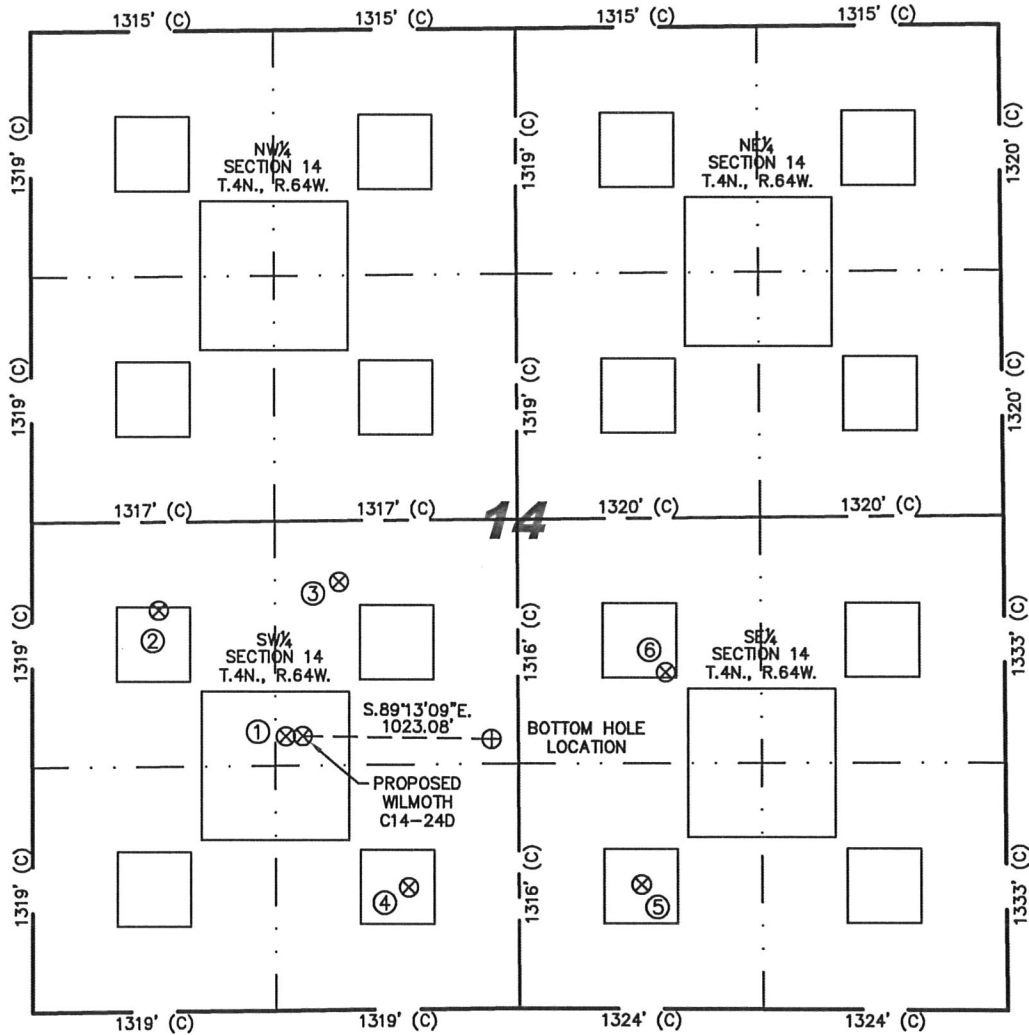
David C. Holmes
Professional Land Surveyor Registration No. 32828
State of Colorado

JOB #: 11086

Completed 04/28/2011

SKETCH - WILMOTH C14-24D

SECTION 14
TOWNSHIP 4 NORTH
RANGE 64 WEST



①

WILMOTH
C14-25
NE/SW SEC. 14
1476' FSL
1375' FWL
EL 4648'
N 40.30928
W 104.52239
PDOP 2.2

②

WILMOTH 14-12
NW/SW SEC. 14
2160' FSL
688' FWL
EL 4646'
N 40.31115
W 104.52483
PDOP 1.6

③

WILMOTH 14-2
NE/SW SEC. 14
2305' FSL
1667' FWL
EL 4646'
N 40.31155
W 104.52132
PDOP 2.0

④

HERBST 14-14
SE/SW SEC. 14
656' FSL
2040' FWL
EL 4651'
N 40.30702
W 104.52003
PDOP 1.3

⑤

WATKINS 14-1
SW/SE SEC. 14
668' FSL
1980' FEL
EL 4649'
N 40.30703
W 104.51550
PDOP 1.2

⑥

WATKINS 14-10
NW/SE SEC. 14
1811' FSL
1841' FEL
EL 4646'
N 40.31017
W 104.51498
PDOP 2.2

NOTES:

- 1) THIS SKETCH DOES NOT REPRESENT A BOUNDARY SURVEY.
- 2) THE DATUM FOR THE LATITUDES AND LONGITUDES ON THIS SKETCH IS NAD83.

