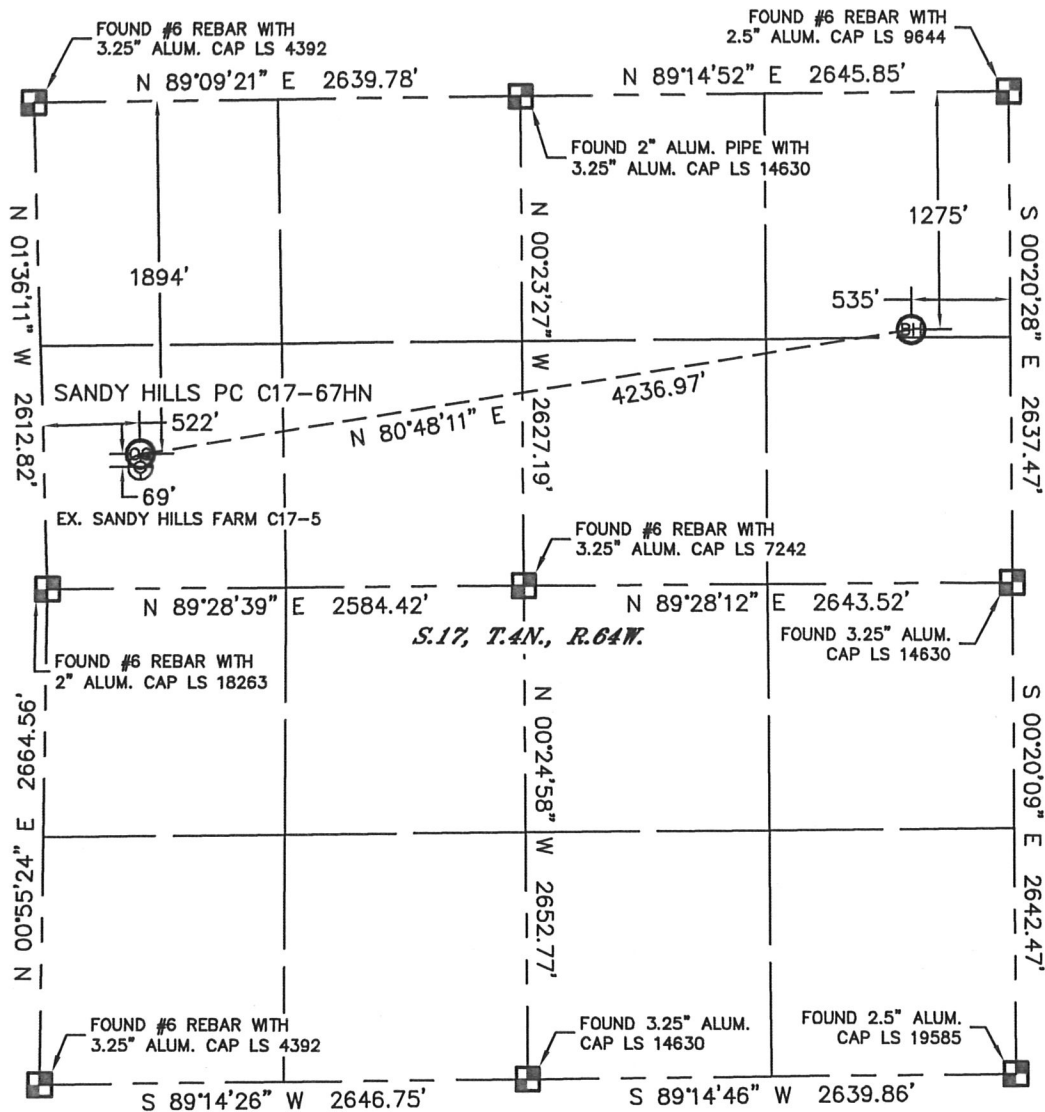


# WELL LOCATION CERTIFICATE

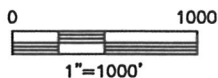
THIS MAP DOES NOT REPRESENT A BOUNDARY SURVEY

SECTION: 17  
TOWNSHIP: 4N  
RANGE: 64W



In accordance with a request from Erik Van Decar with Noble Energy Inc. Lat40°, Inc. has determined the surface location of the SANDY HILLS PC C17-67HN to be 1894' from the NORTH line and 522' from the WEST line and the bottom hole to be 1275' from the NORTH line and 535' from the EAST line as measured at right angles from the section lines of Section 17, Township 4 North, Range 64 West of the Sixth Principal Meridian, County of Weld, State of Colorado.

I hereby state that this Well Location Certificate was prepared by me, or under my direct supervision, that the fieldwork was completed on 6/2/11, for and on behalf of Noble Energy Inc. That this is not a Land Survey Plat or an Improvement Survey Plat, and that it is not to be relied upon for establishment of fence, building, or other future improvement lines.



**NOTE:**

- 1) Bearings shown are Grid Bearings of the Colorado State Plane Coordinate System, North Zone, North American Datum 1983/2007. The lineal dimensions as contained herein are based upon the "U.S. Survey Foot."
- 2) Ground elevations are based on an observed GPS elevation (NAVD 1988 DATUM).
- 3) NEAREST EXISTING WELL: SANDY HILLS FARM C17-5, 69'
- 4) IMPROVEMENTS: See LOCATION DRAWING for all visible improvements within 400' of disturbed area.
- 5) SURFACE USE: RANGELAND
- 6) INSTRUMENT OPERATOR: ADAM KELLY



SURFACE LOCATION  
LATITUDE: 40.31443°N  
LONGITUDE: 104.58202°W  
PDOP: 1.9  
ELEV: 4748'  
1/4, 1/4: SW1/4NW1/4  
NEAREST PROPERTY LINE: 522' WEST

BOTTOM HOLE  
LATITUDE: 40.31617°N  
LONGITUDE: 104.56700°W

**NOTE**

According to Colorado law, you must commence any legal action based upon any defect in this W.L.C. within three years after you discover such defect. In no event, may any action based upon any defect in this survey be commenced more than ten years after the date of the certificate shown hereon. (13-80-105 C.R.S.)

## LEGEND

-  = ALIQUOT MONUMENT AS DESCRIBED
-  = CALCULATED POSITION



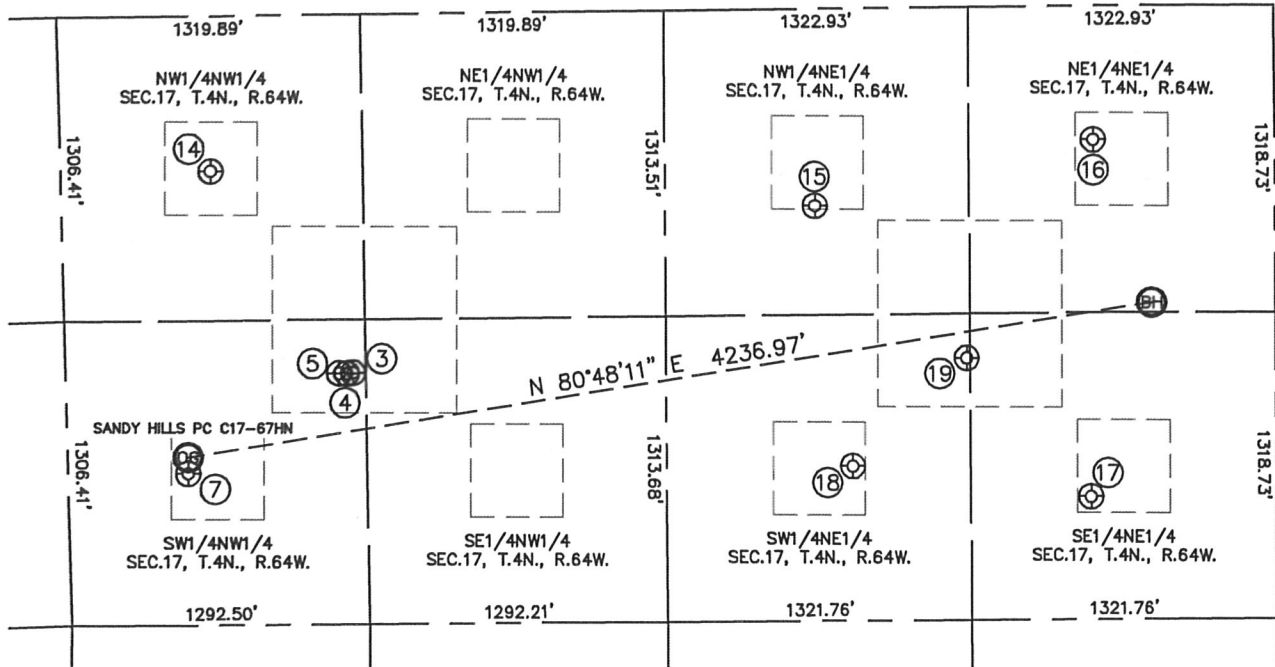
Brian T. Brinkman—On behalf of Lat40°, Inc.  
Colorado Licensed Professional  
Land Surveyor No. 38175

PROJECT#: 2011016

# SITE SKETCH

## SANDY HILLS PC C17-67HN

SECTION: 17  
TOWNSHIP: 4N  
RANGE: 64W



③

SH FARMS C17-19  
SW1/4NW1/4  
1539' FNL  
1248' FWL  
LAT-40.31541°N  
LONG-104.57944°W  
PDOP: 2.3  
ELEV: 4745'

④

SH FARMS C17-3  
SW1/4NW1/4  
1542' FNL  
1220' FWL  
LAT-40.31541°N  
LONG-104.57953°W  
PDOP: 3.2  
ELEV: 4745'

⑤

SH FARMS C17-6  
SW1/4NW1/4  
1541' FNL  
1188' FWL  
LAT-40.31541°N  
LONG-104.57965°W  
PDOP: 3.2  
ELEV: 4746'

⑦

SANDY HILL FARMS C17-5  
SW1/4NW1/4  
1963' FNL  
520' FWL  
LAT-40.31424°N  
LONG-104.58202°W  
PDOP: 1.6  
ELEV: 4748'

⑭

SANDY HILL FARMS C17-4  
NW1/4NW1/4  
666' FNL  
653' FWL  
LAT-40.31780°N  
LONG-104.58162°W  
PDOP: 1.7  
ELEV: 4766'

⑮

HARLESS PM C17-2  
NW1/4NE1/4  
845' FNL  
1996' FEL  
LAT-40.31734°N  
LONG-104.57223°W  
PDOP: 3.2  
ELEV: 4728'

⑯

CPC-HARLESS 17-1  
NE1/4NE1/4  
574' FNL  
783' FEL  
LAT-40.31809°N  
LONG-104.56787°W  
PDOP: 3.6  
ELEV: 4711'

⑰

HARLESS PM C17-8  
SE1/4NE1/4  
2107' FNL  
801' FEL  
LAT-40.31389°N  
LONG-104.56796°W  
PDOP: 3.1  
ELEV: 4705'

⑱

CPC-HARLESS 17-2  
SW1/4NE1/4  
1965' FNL  
1836' FEL  
LAT-40.31427°N  
LONG-104.57167°W  
PDOP: 4.0  
ELEV: 4724'

⑲

MORIAH 17-15  
SW1/4NE1/4  
1507' FNL  
1338' FEL  
LAT-40.31553°N  
LONG-104.56988°W  
PDOP: 3.1  
ELEV: 4717'

