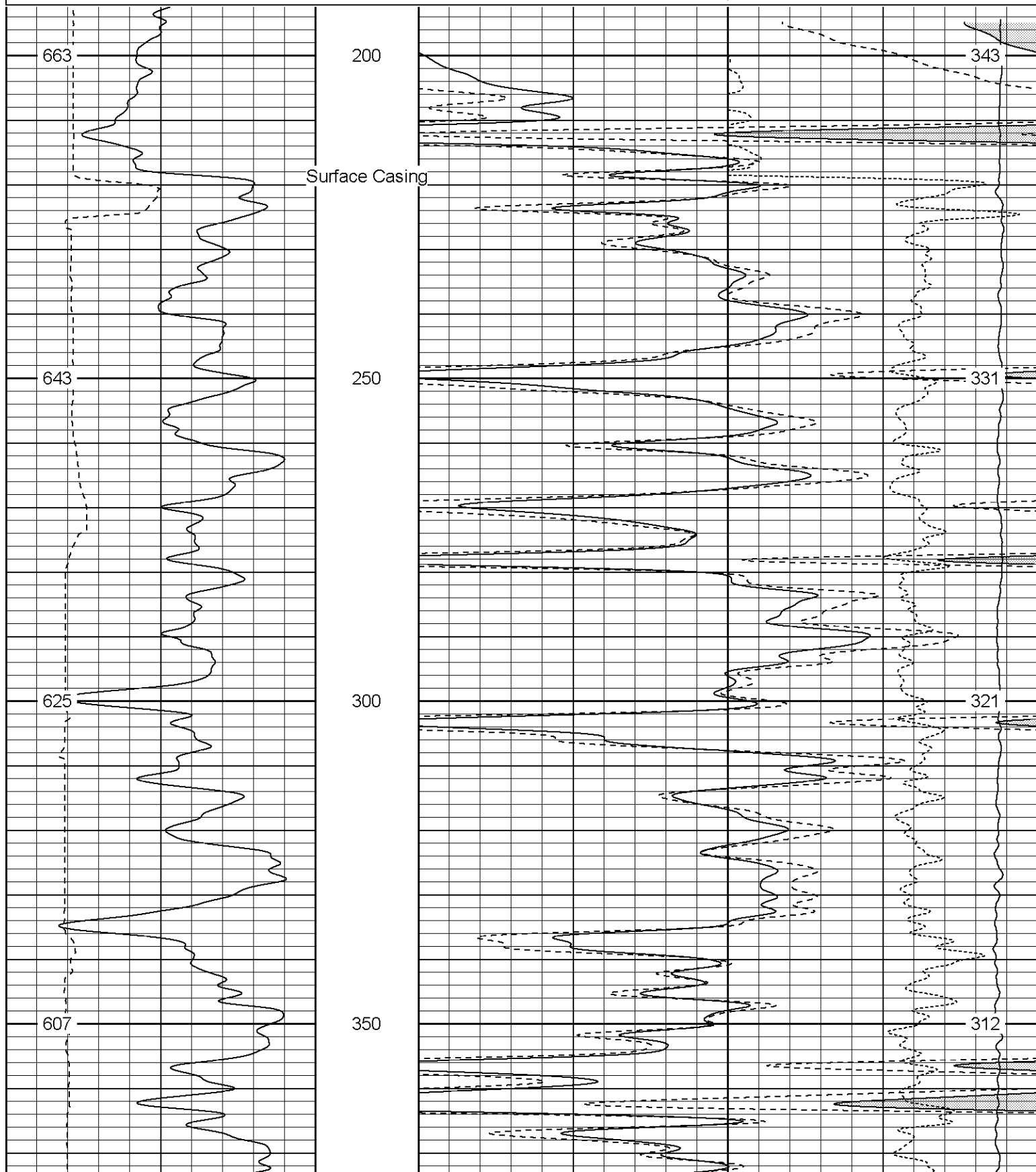
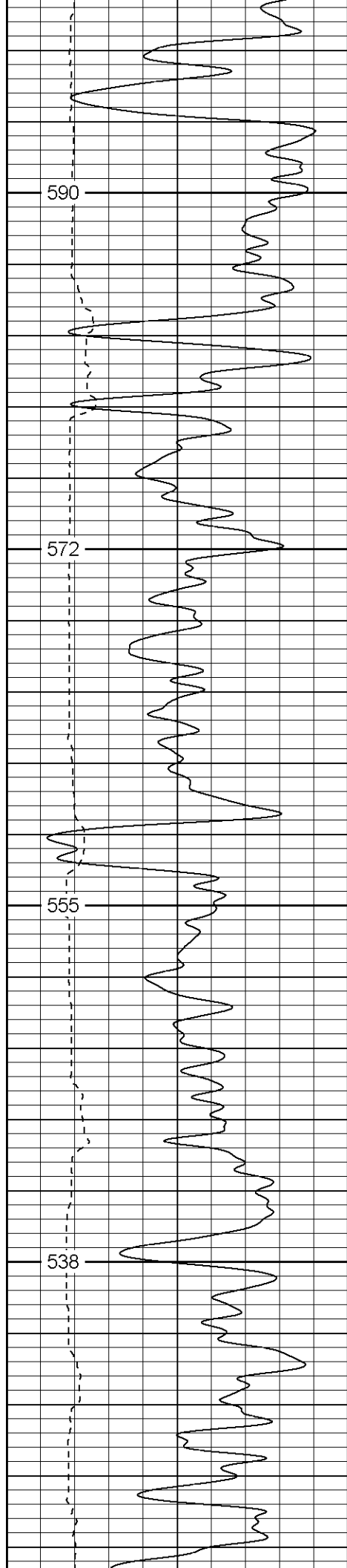


Well	Company	XTO Energy, Inc.
Field	Well	Apache Canyon 1-13
County	Field	Purgatoire River
	County	Las Animas

Database File: xtoac1113.db
Dataset Pathname: pass4.1
Presentation Format: cdl
Dataset Creation: Thu Aug 17 00:02:06 2006 by Calc Warrior 7.0 STD Ope
Charted by: Depth in Feet scaled 1:240

0	GR (GAPI)	200	1	RHOB (g/cc)	2
6	DCAL (in)	16	30	DPOR (pu)	-10
			-0.5	RHOC (g/cc)	0.5
			4000	LTEN (lb)	0



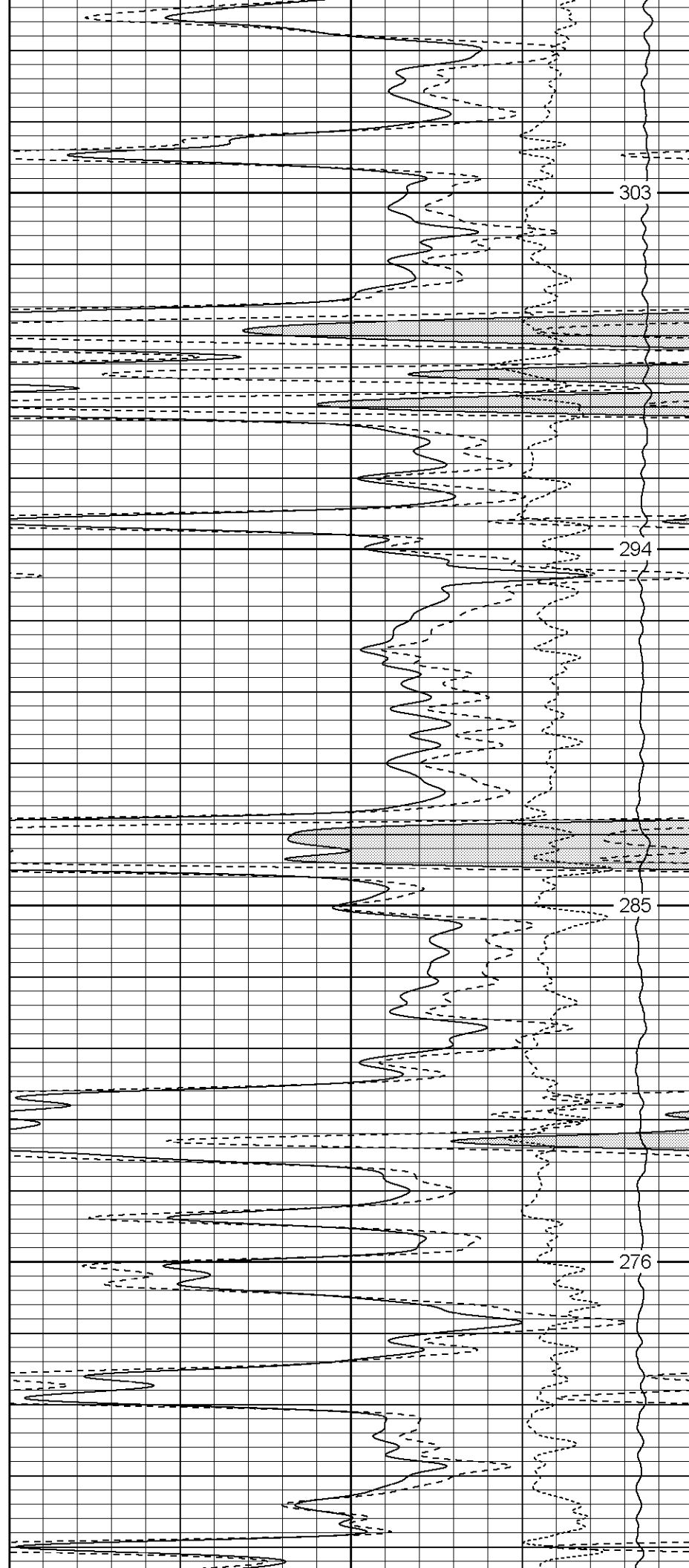


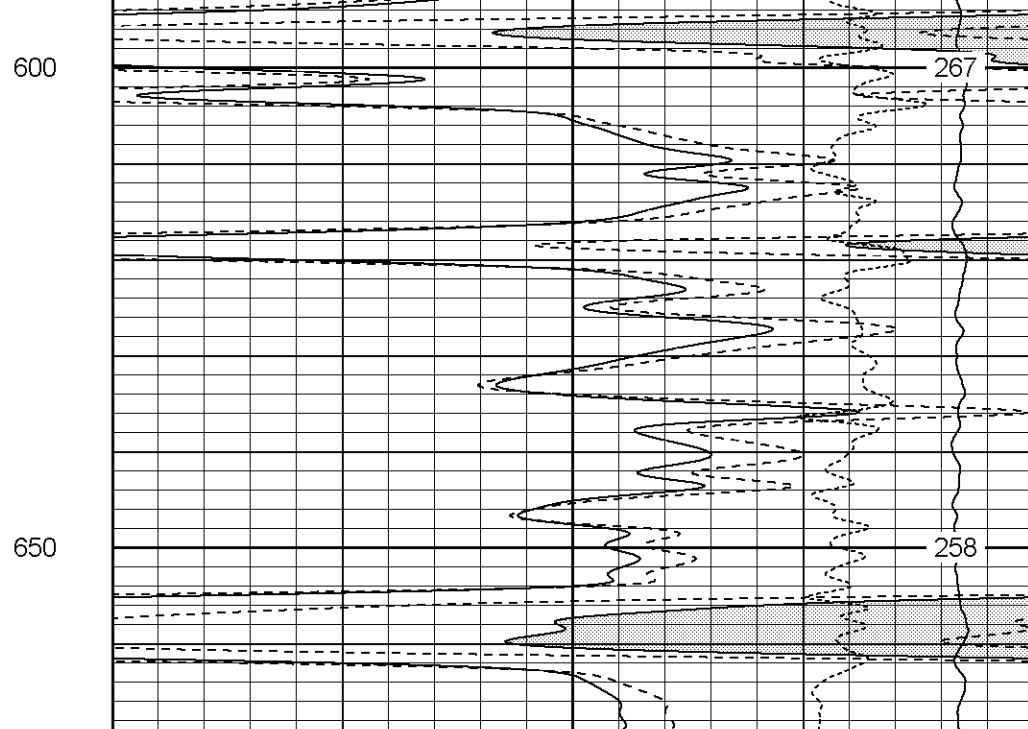
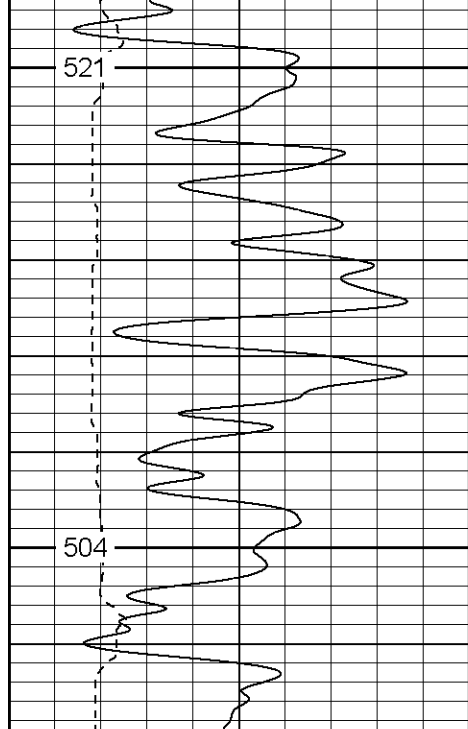
400

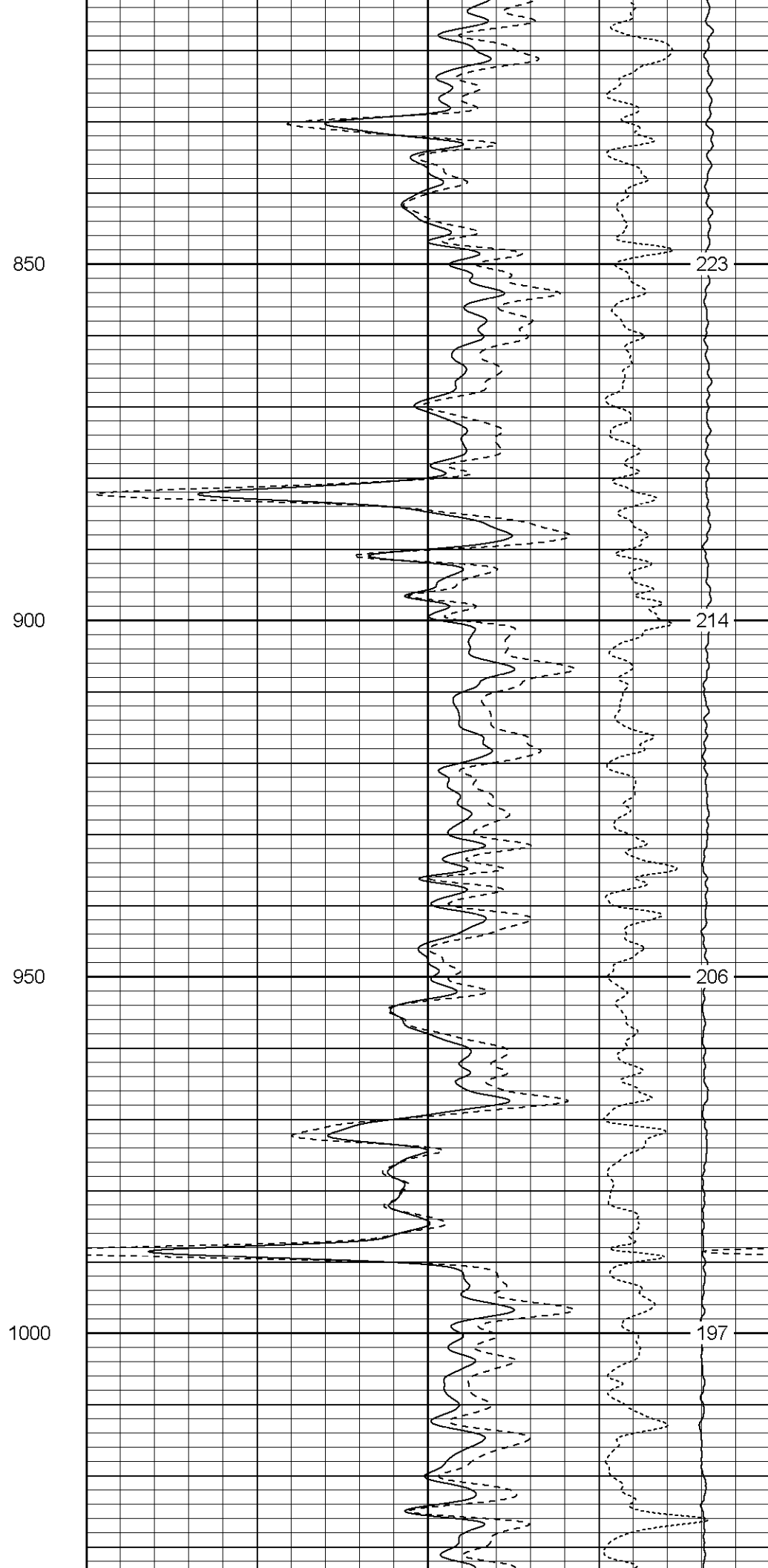
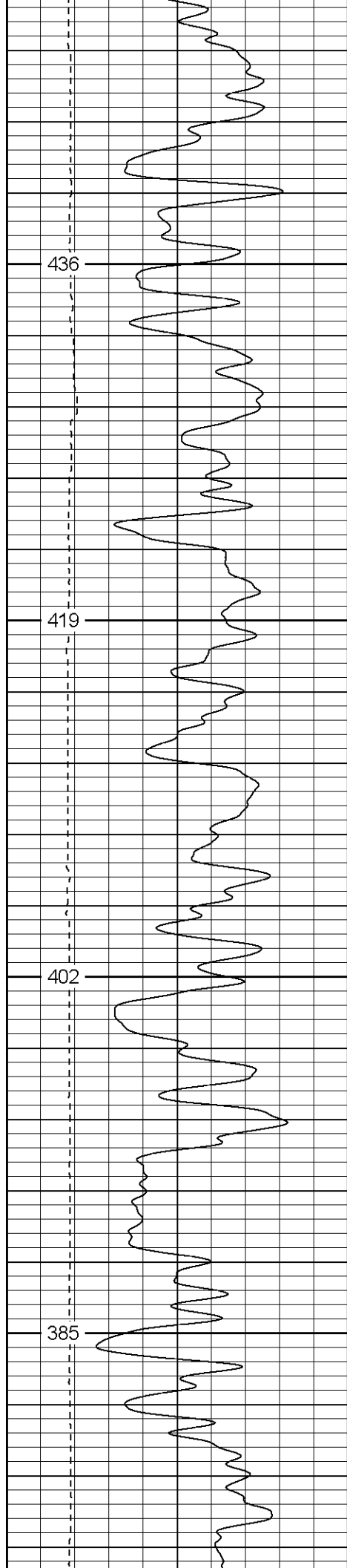
450

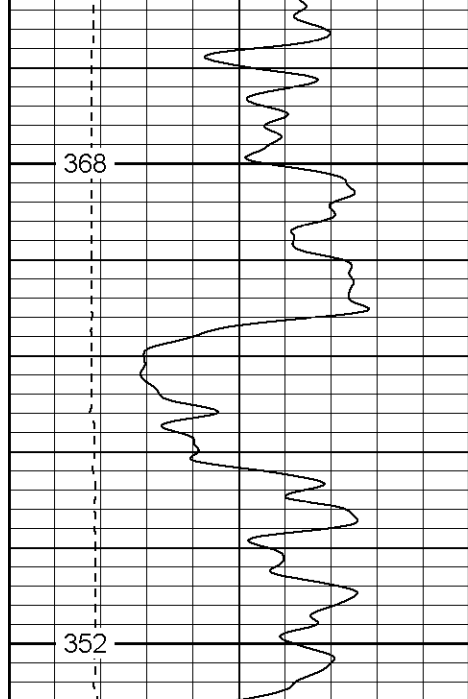
500

550



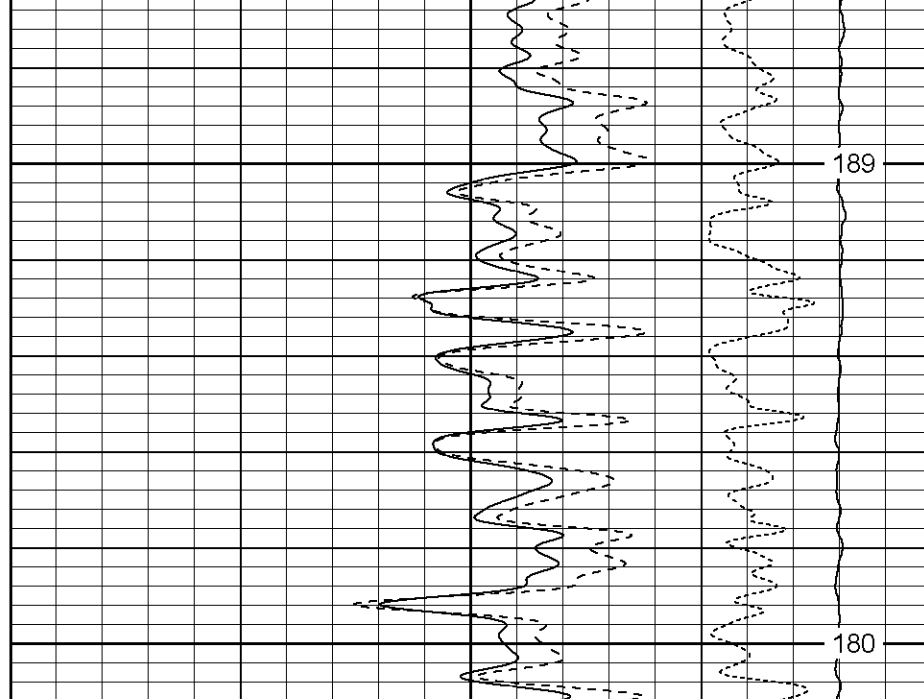


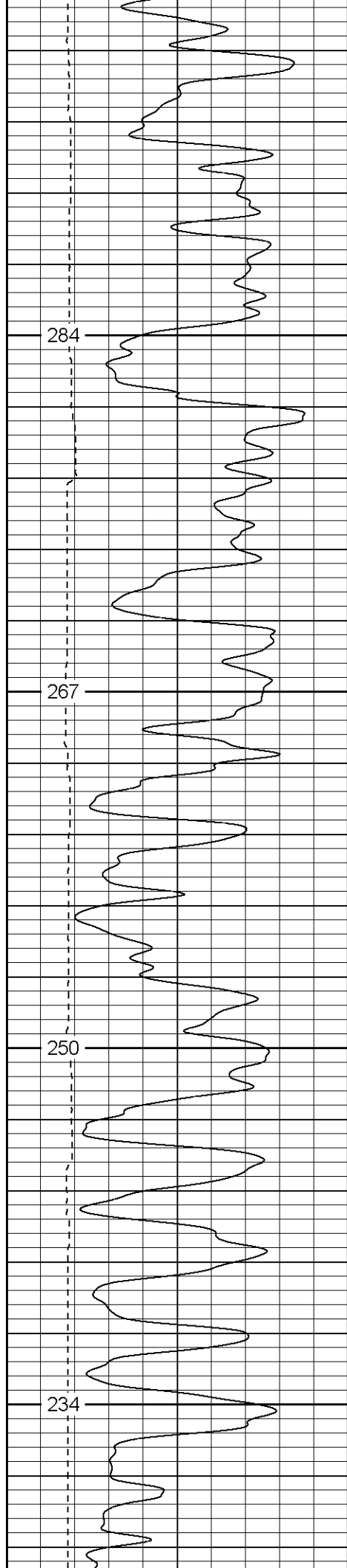




1050

1100



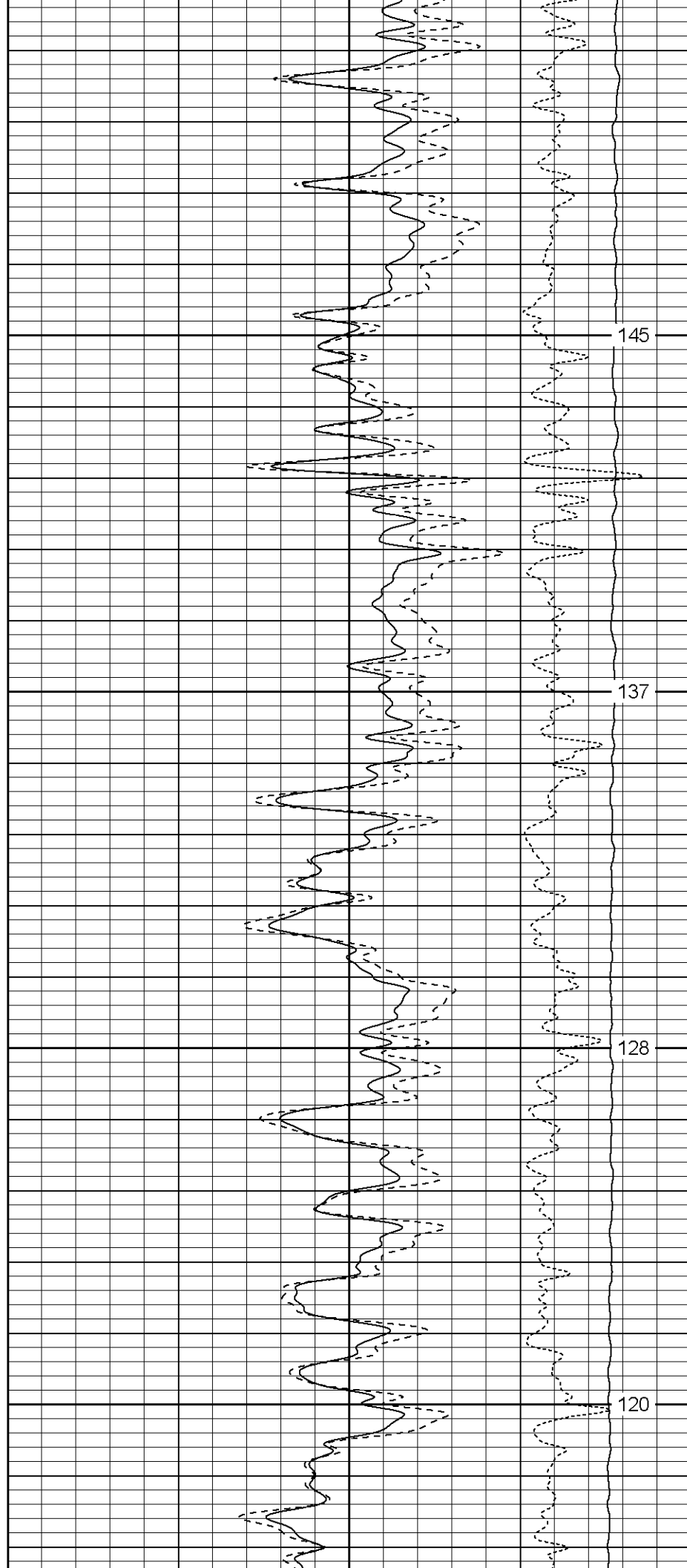


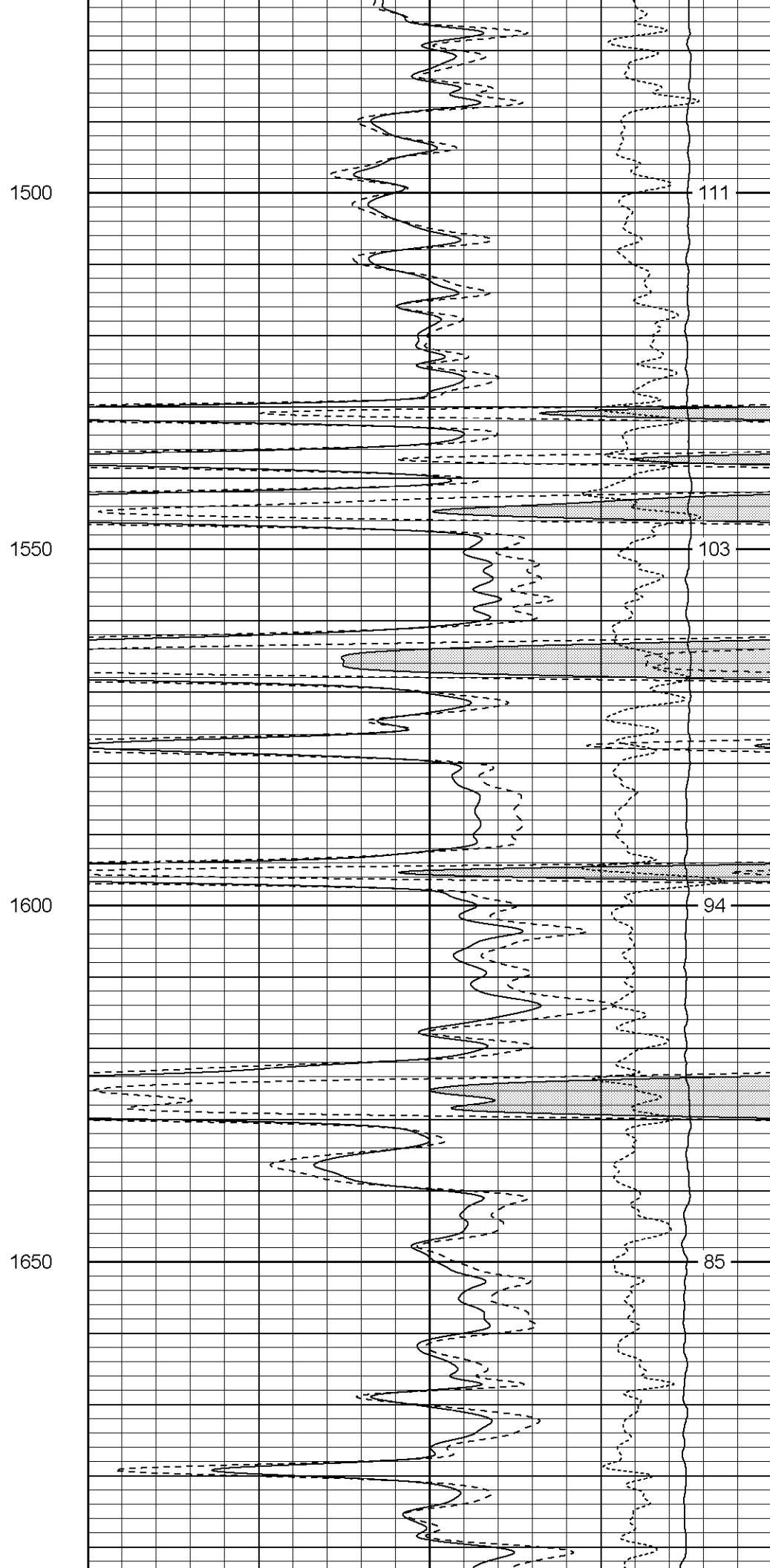
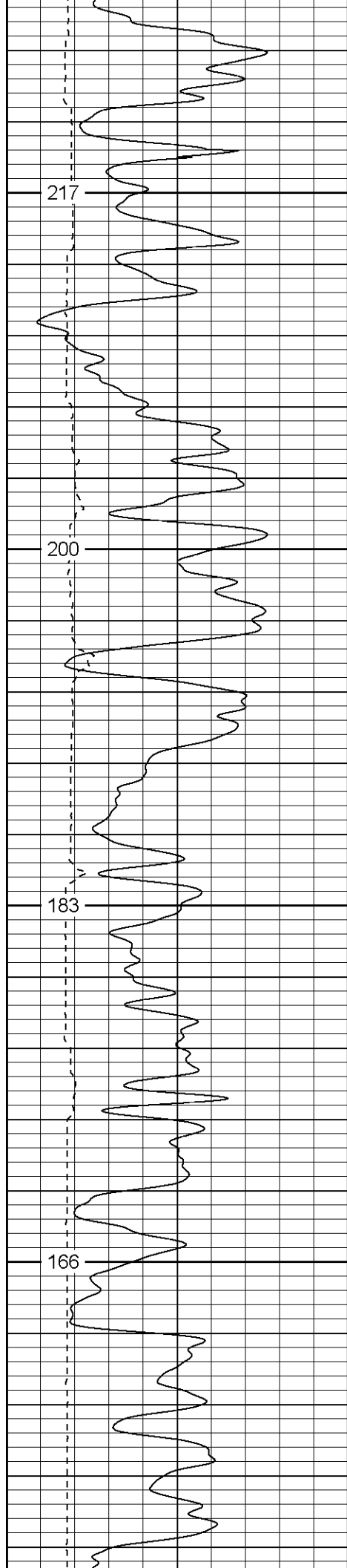
1300

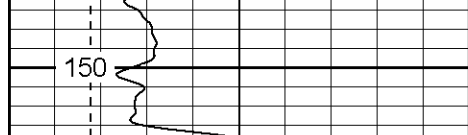
1350

1400

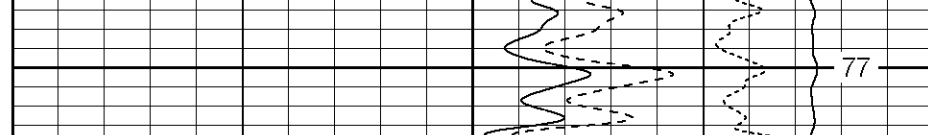
1450

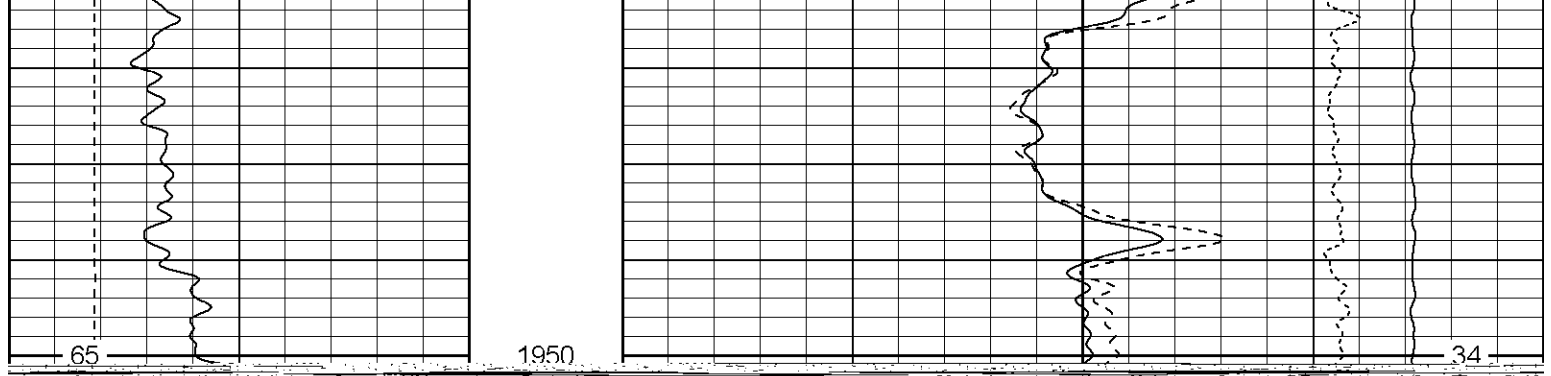






1700





← DCAL		
0	GR (GAPI)	200
6	DCAL (in)	16

RHOB → ← RHOC		
1	RHOB (g/cc)	2
30	DPOR (pu)	-10
-0.5	RHOC (g/cc)	0.5
4000	LTEN (lb)	0

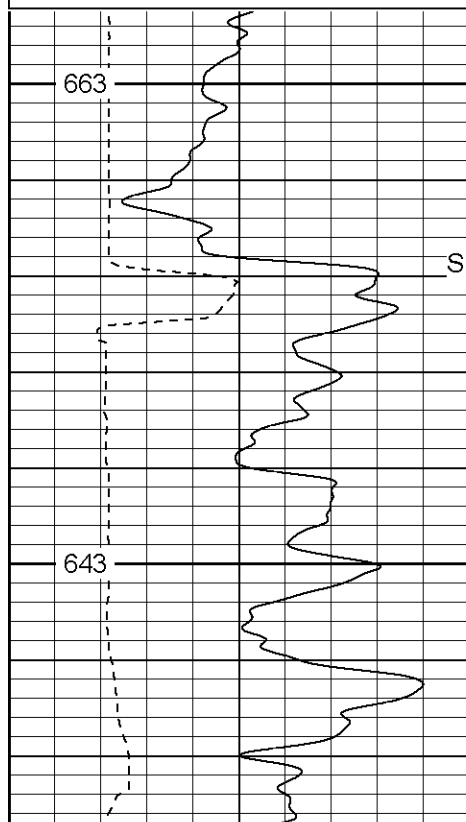
Patterson

Main Pass

Database File: xtoac1113.db
 Dataset Pathname: pass4.1
 Presentation Format: cdnl
 Dataset Creation: Thu Aug 17 00:02:06 2006 by Calc Warrior 7.0 STD Ope
 Charted by: Depth in Feet scaled 1:240

0	GR (GAPI)	200
6	DCAL (in)	16

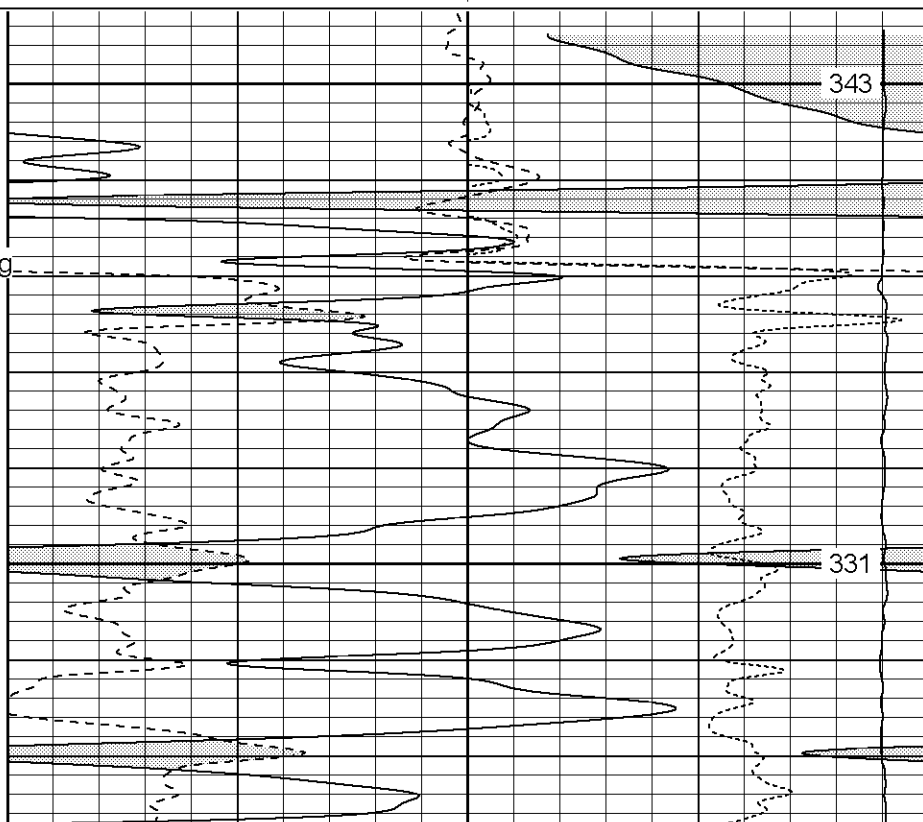
30	NPOR (pu)	-10
30	DPOR (pu)	-10
-0.5	RHOC (g/cc)	0.5
5000	LTEN (lb)	0



200

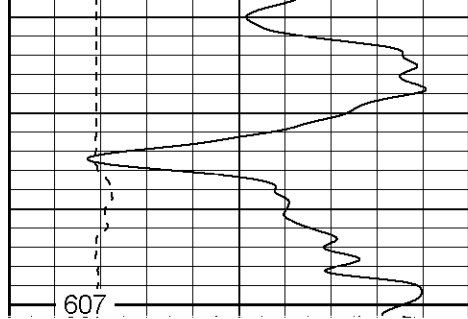
Surface Casing

250

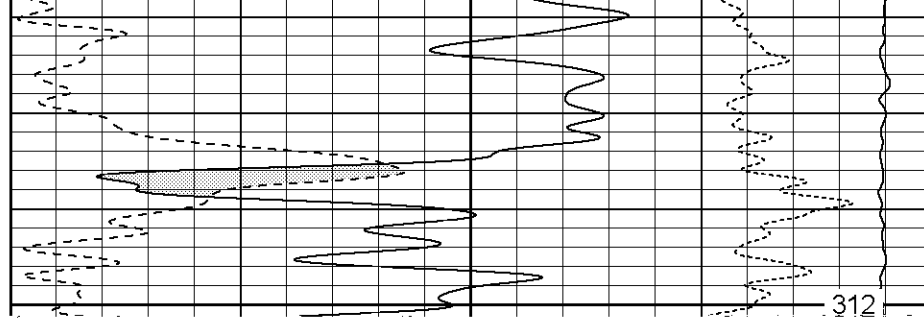


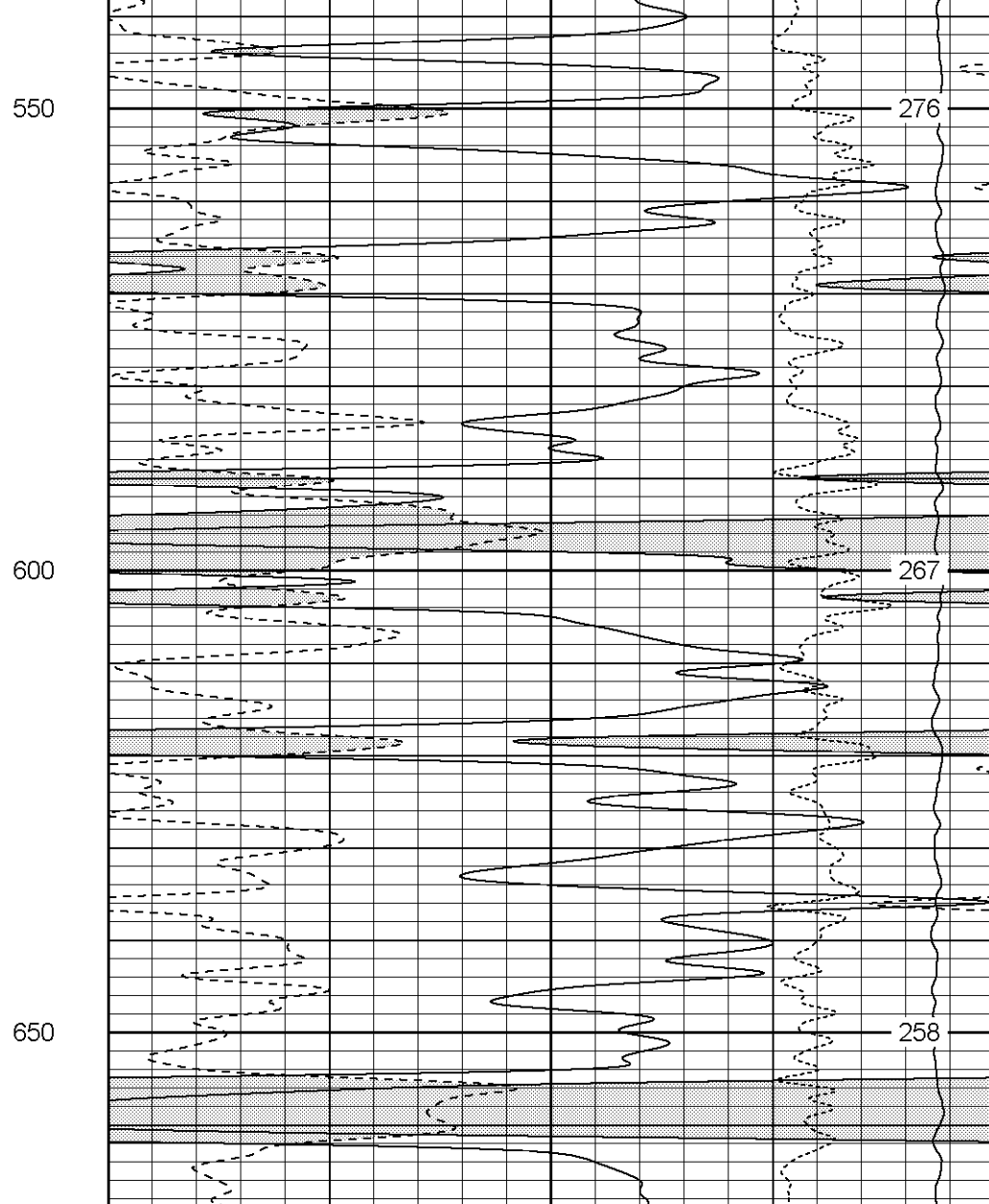
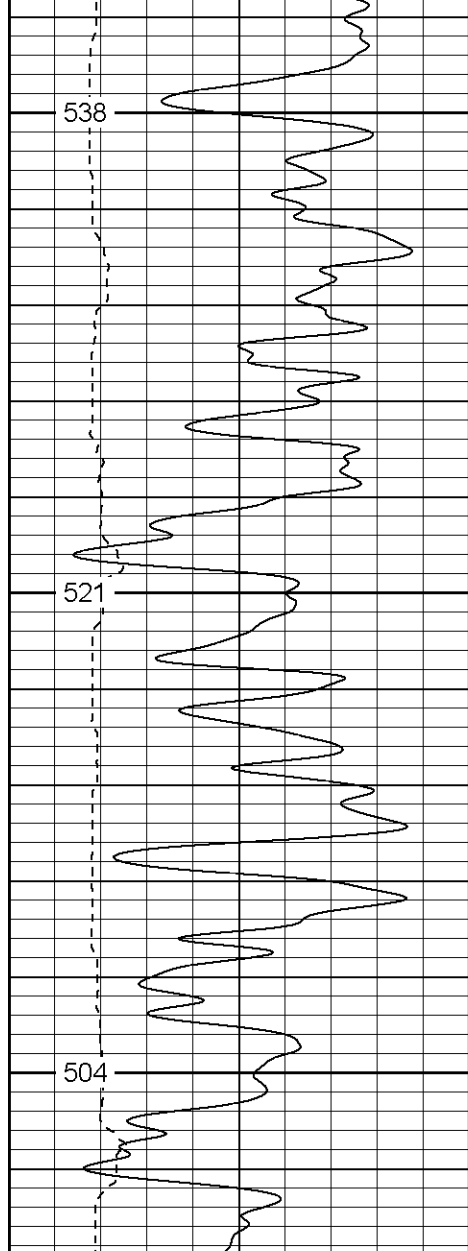
343

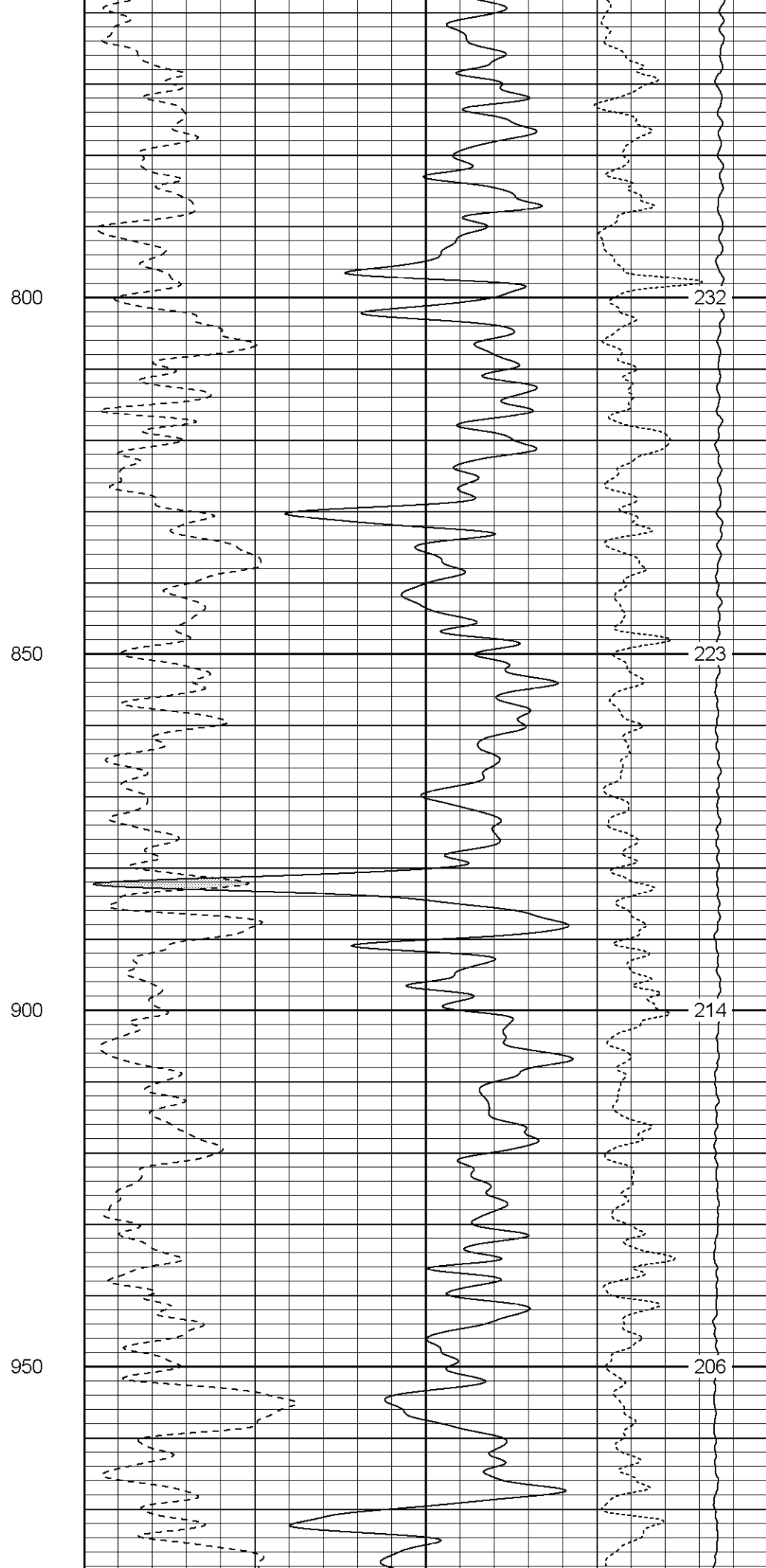
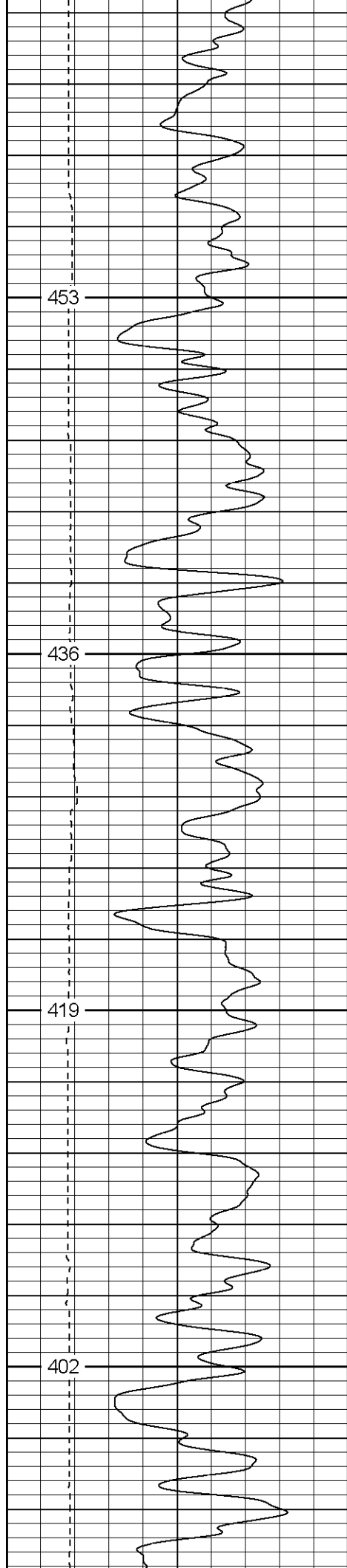
331

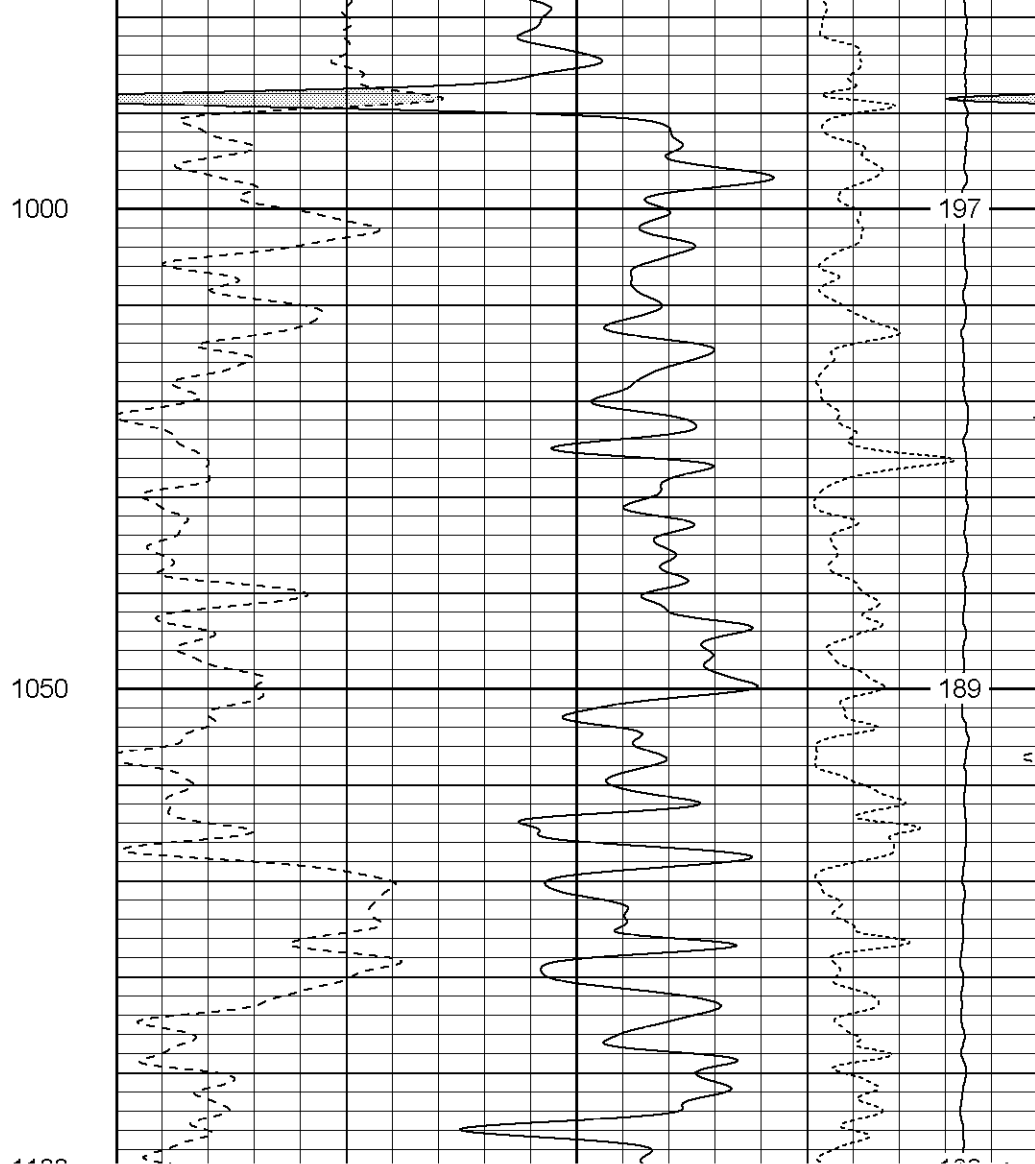
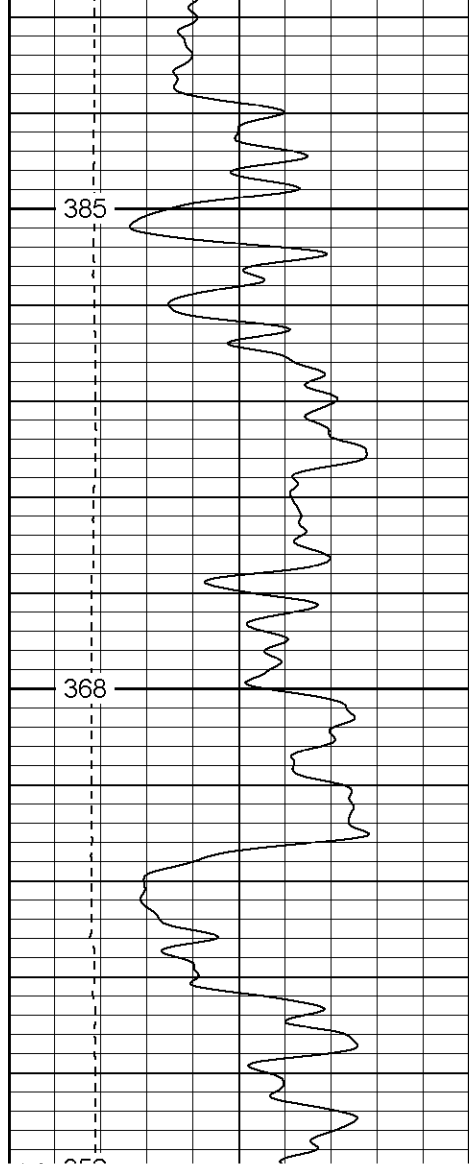


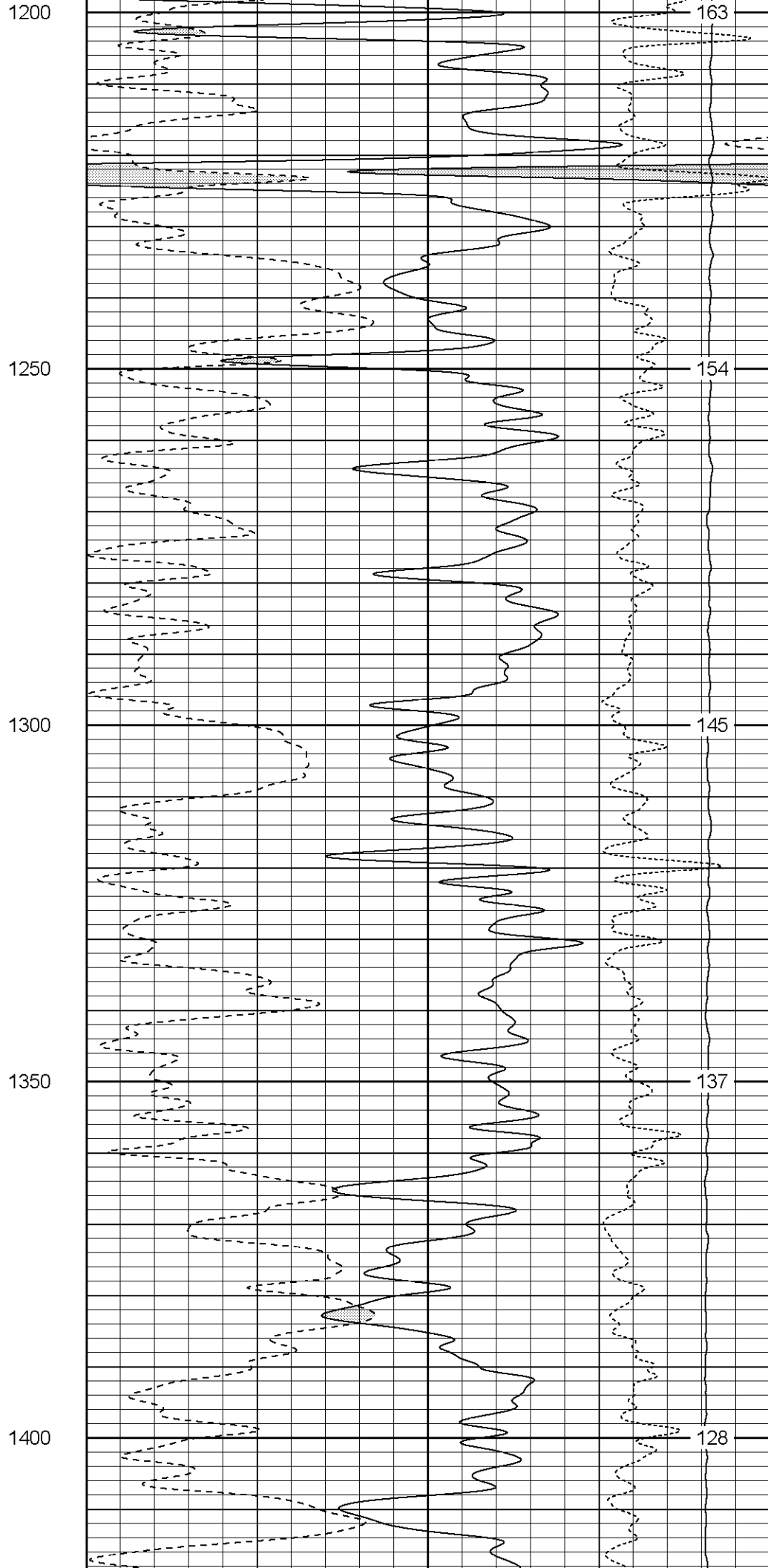
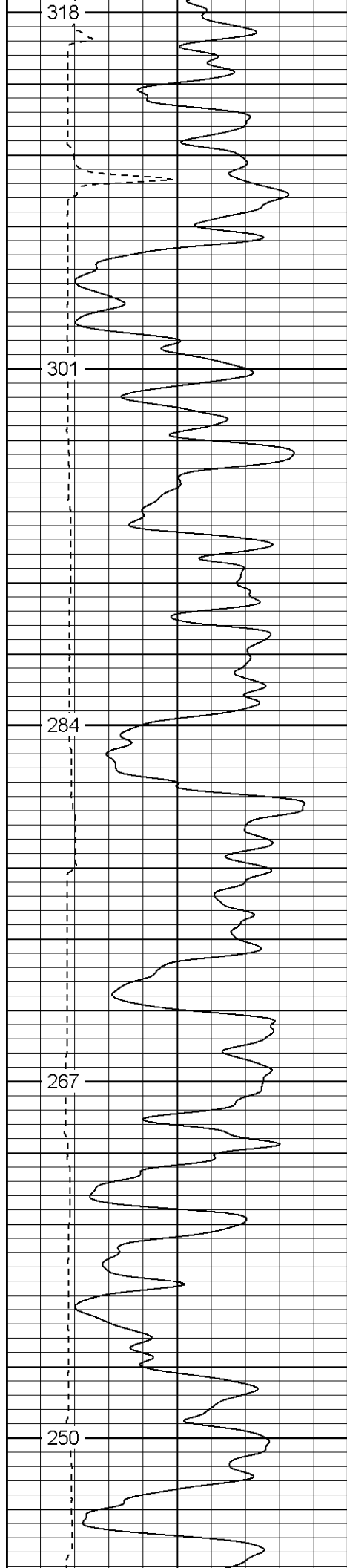
350

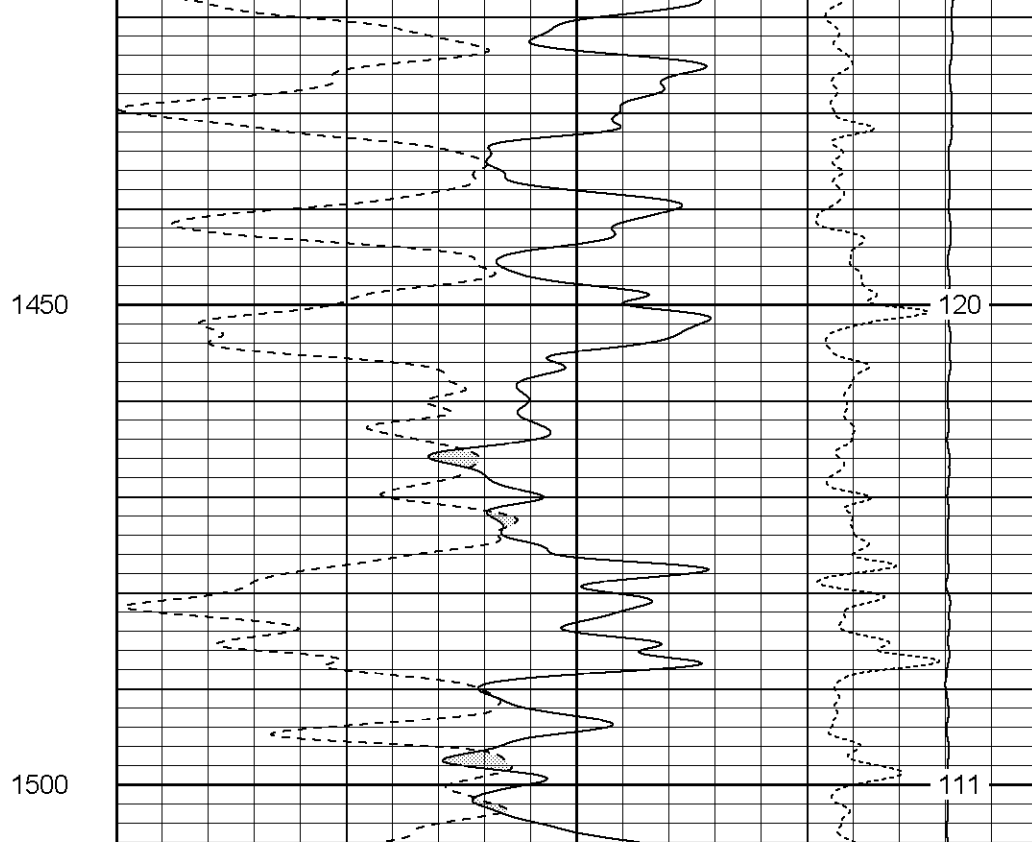
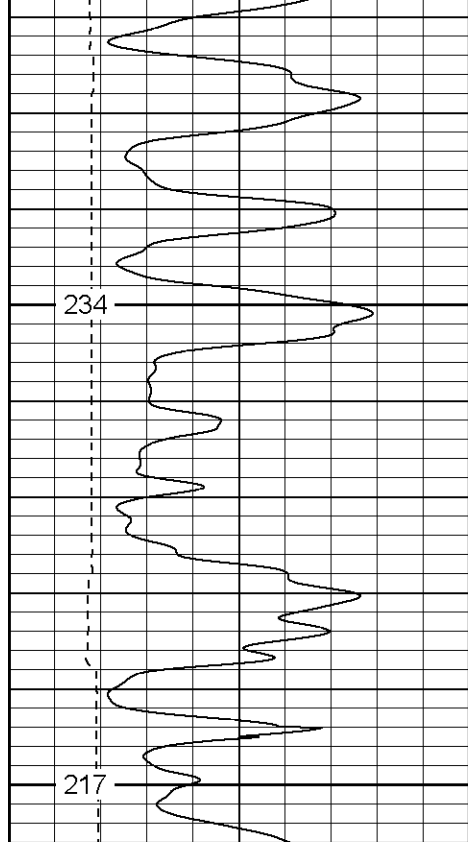


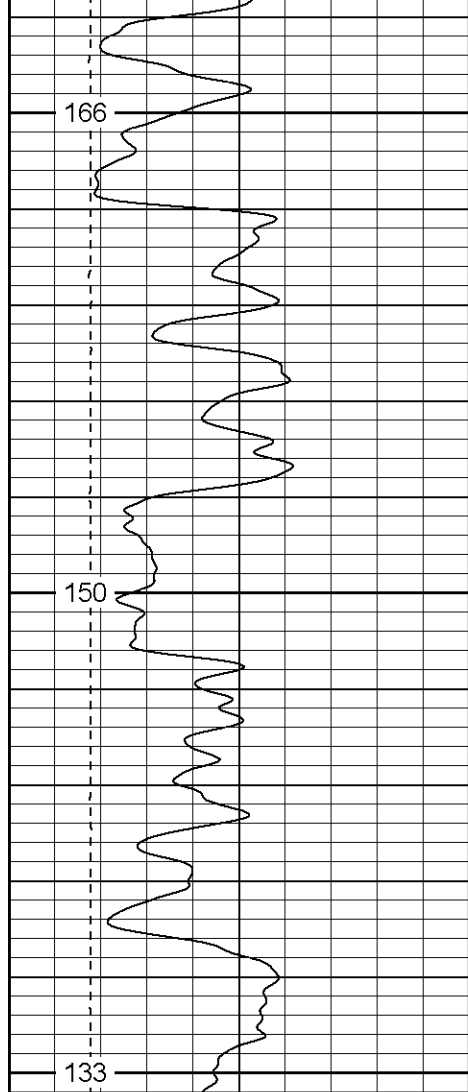








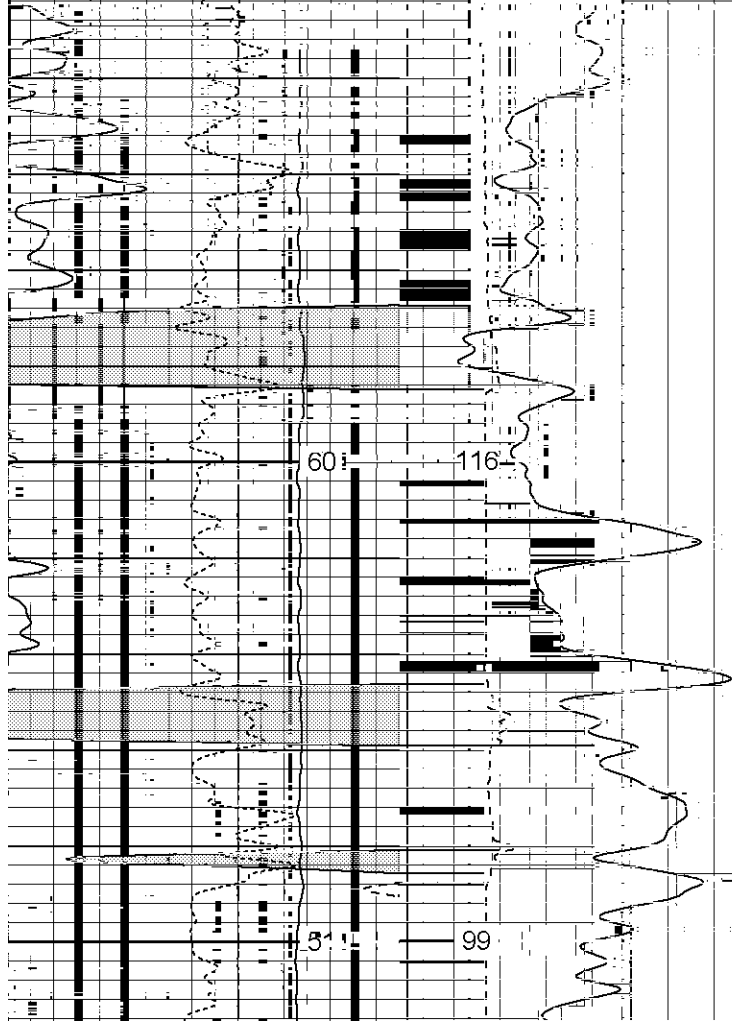
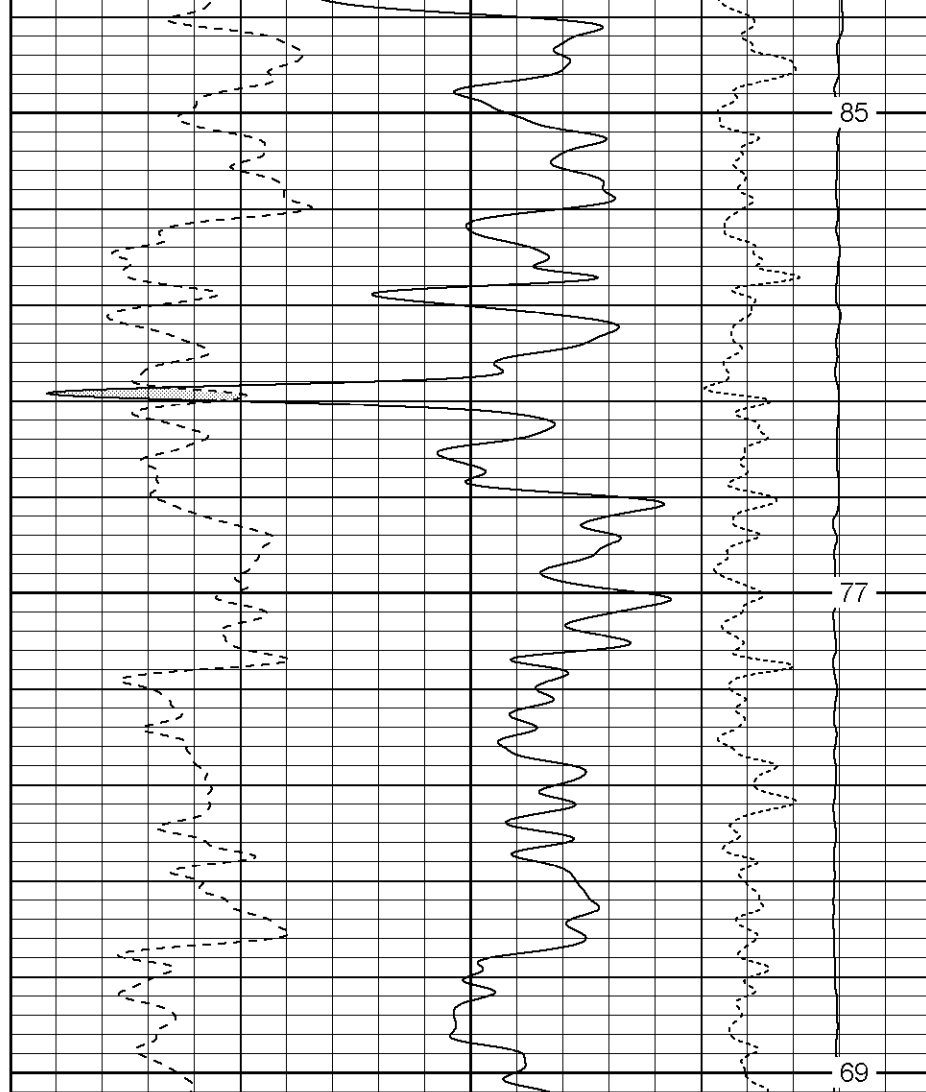




1650

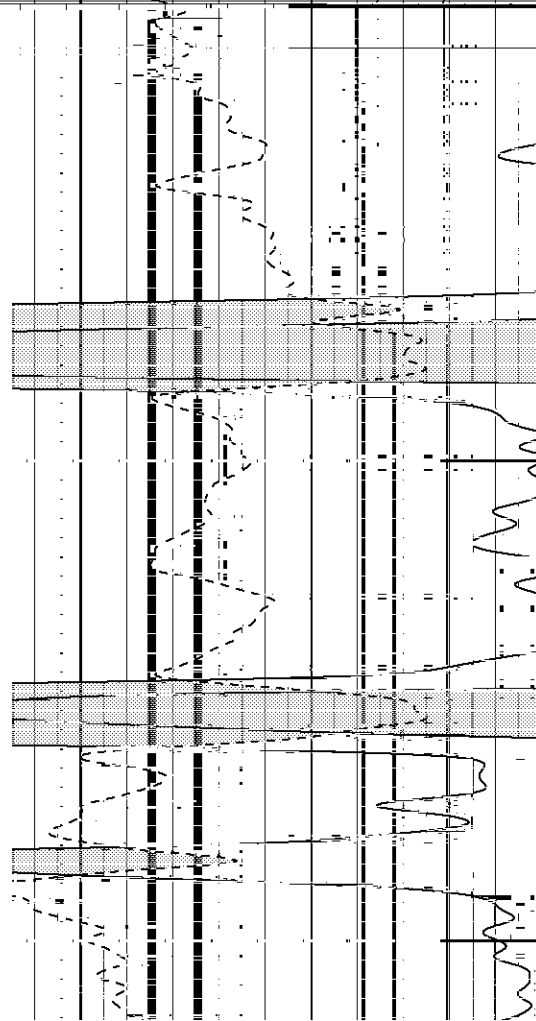
1700

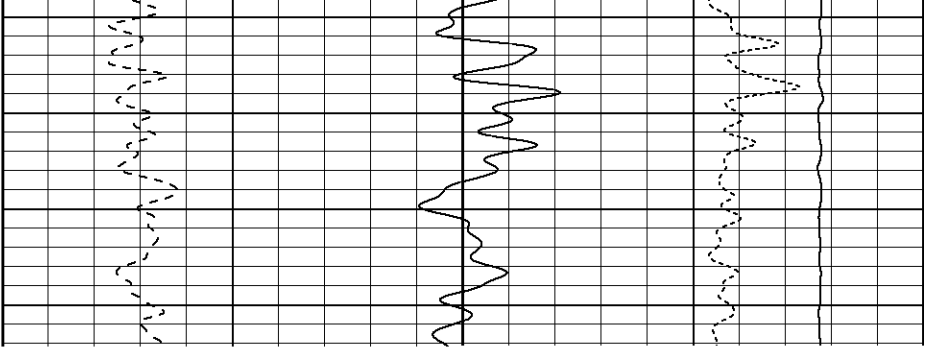
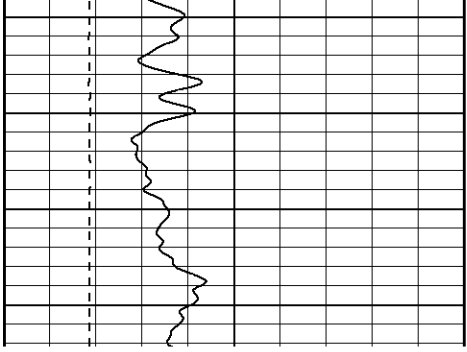
1750

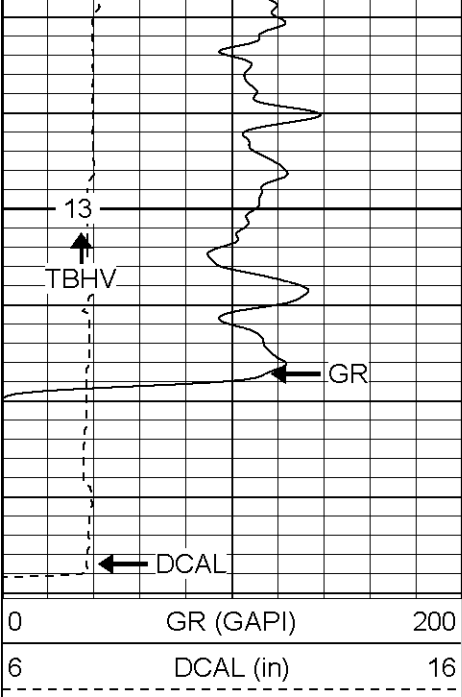


1800

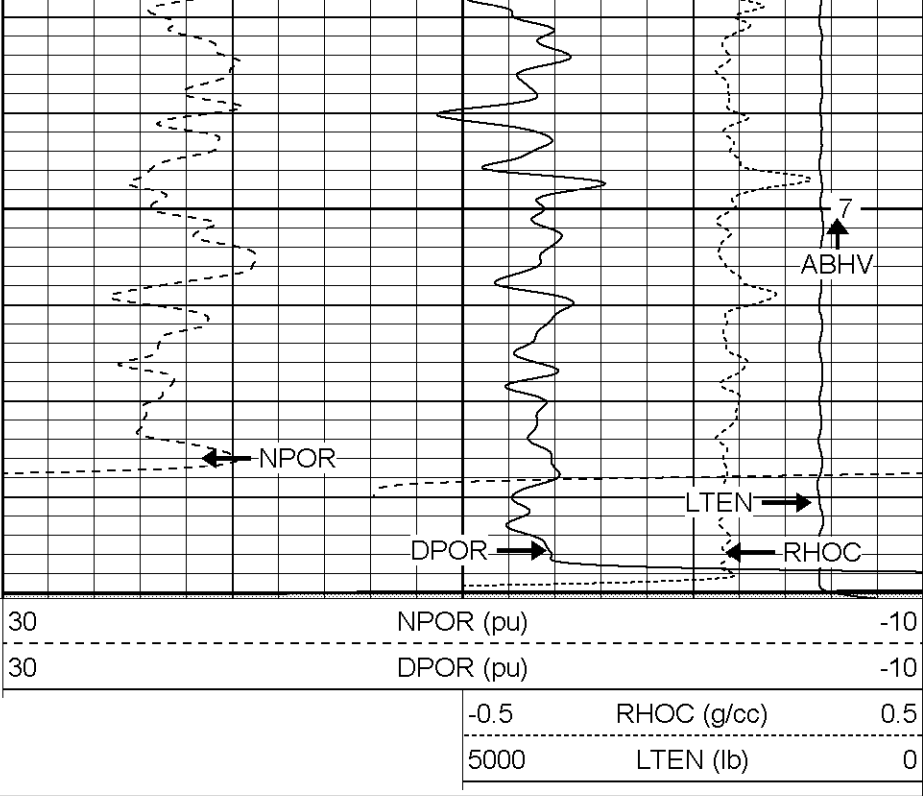
1850







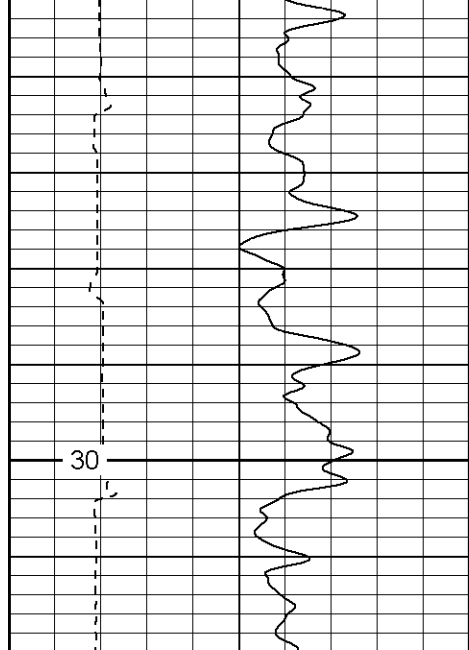
2100



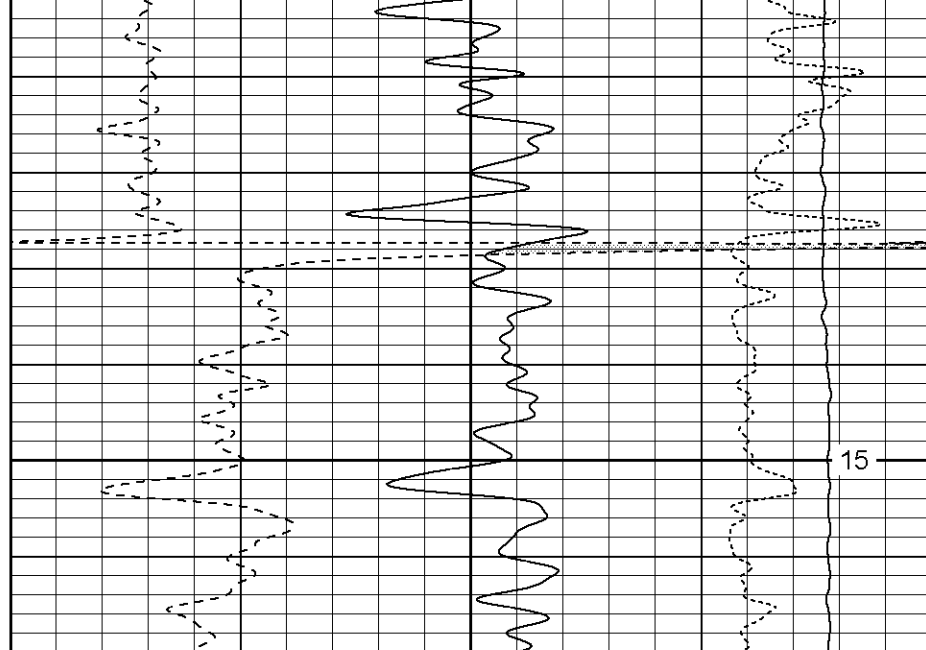
Patterson

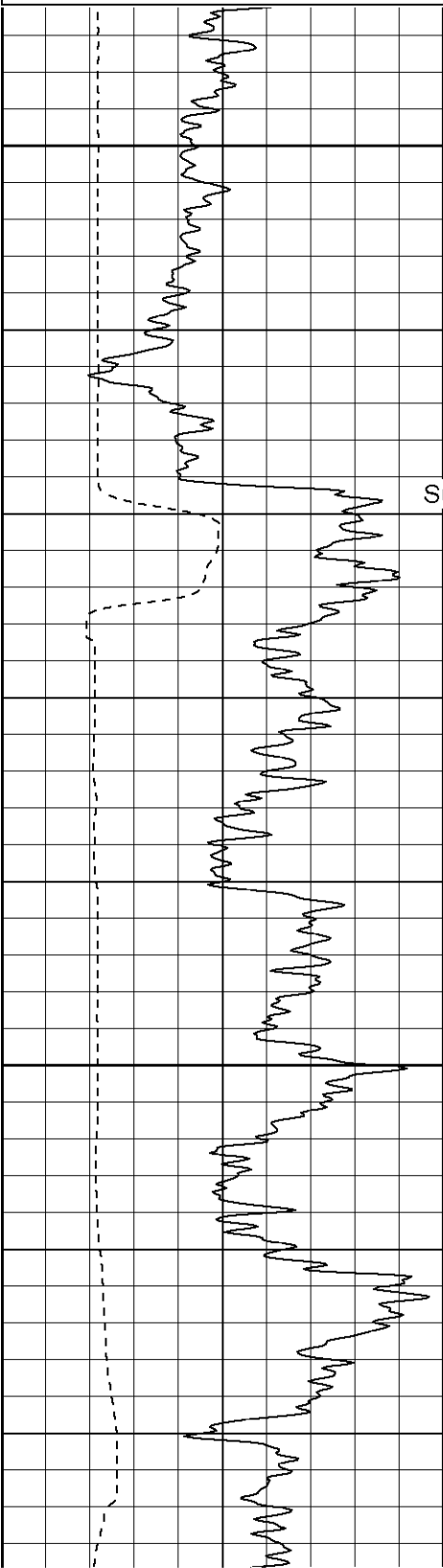
Repeat Section

Database File: xtoac1113.db
Dataset Pathname: pass3.1
Presentation Format: adsl



2050

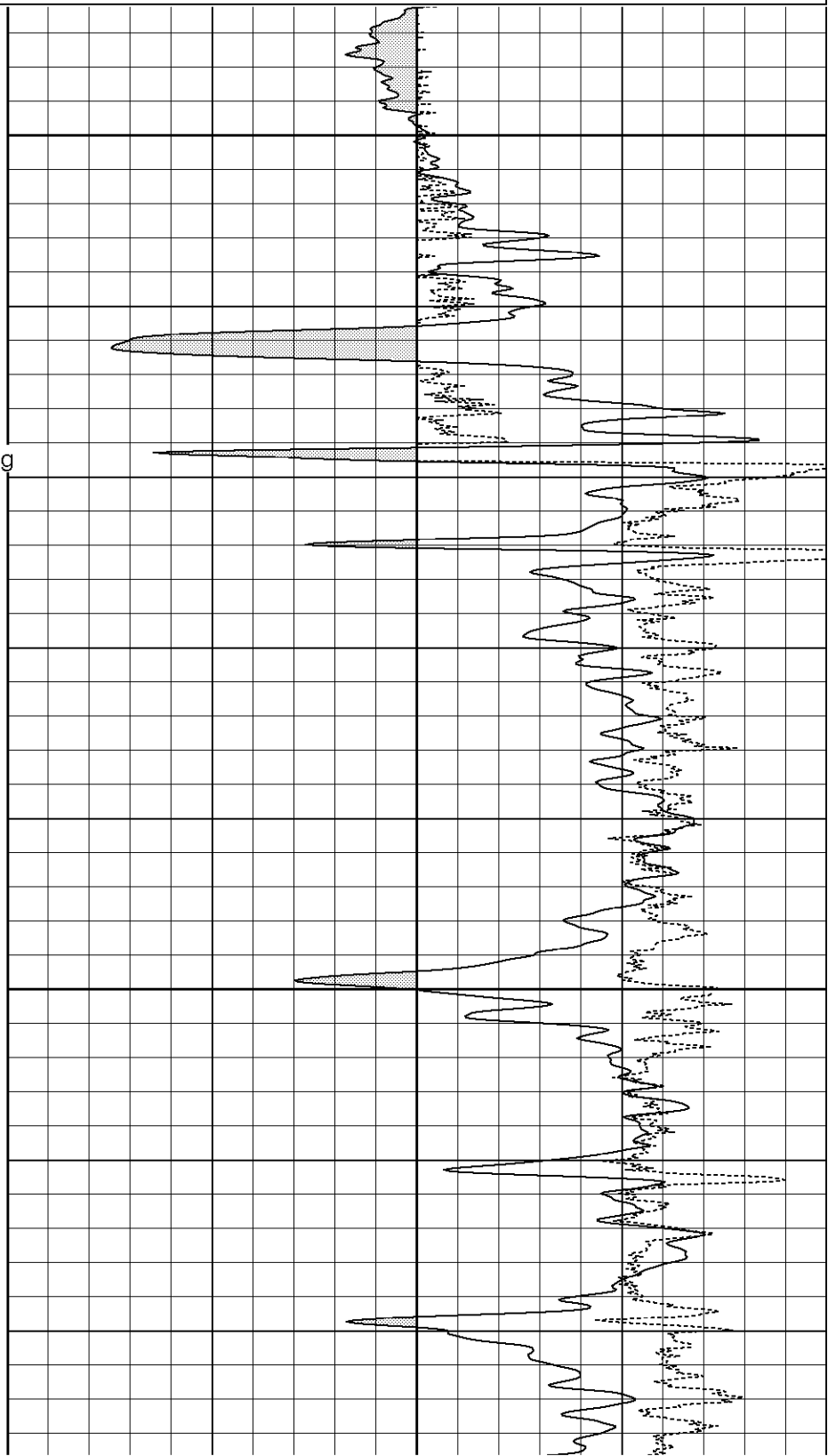


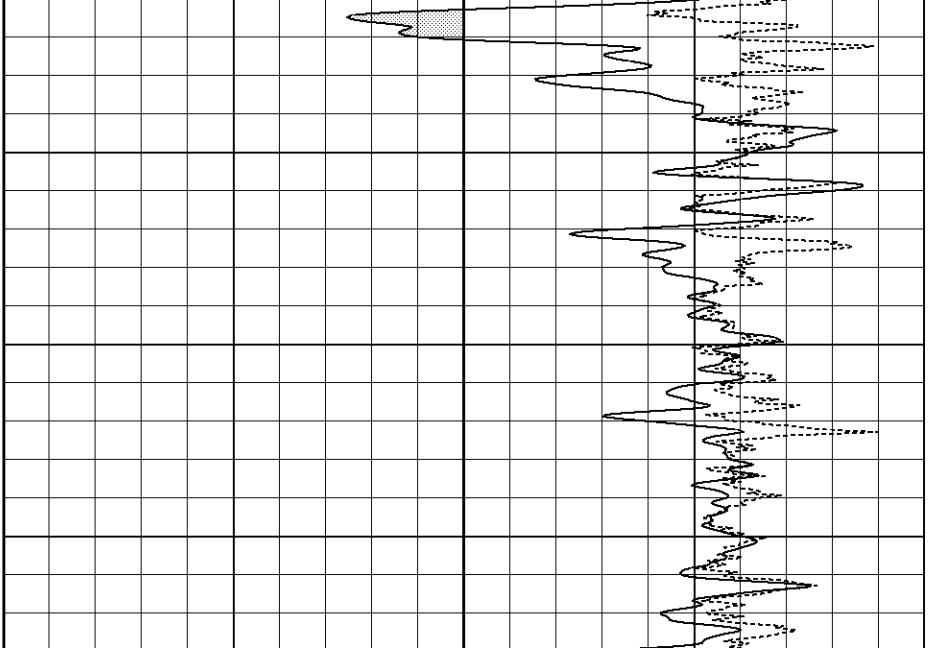
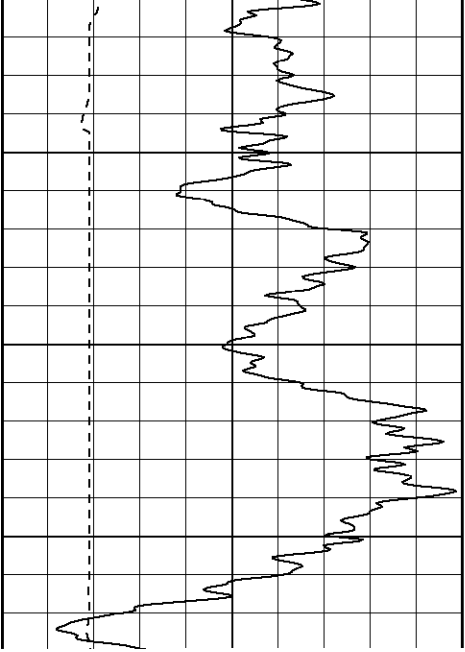


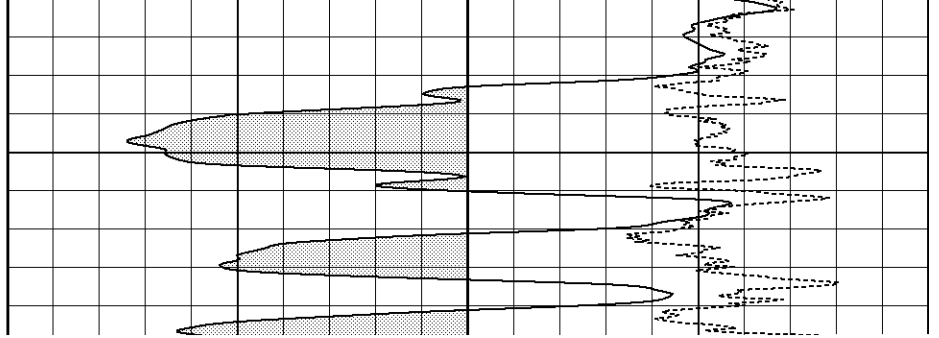
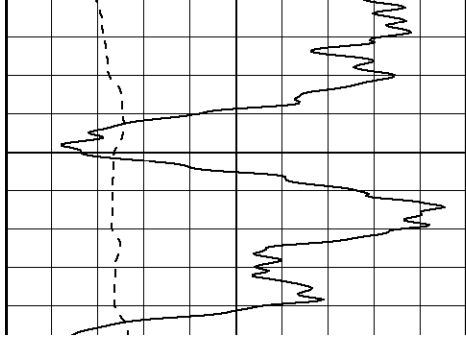
200

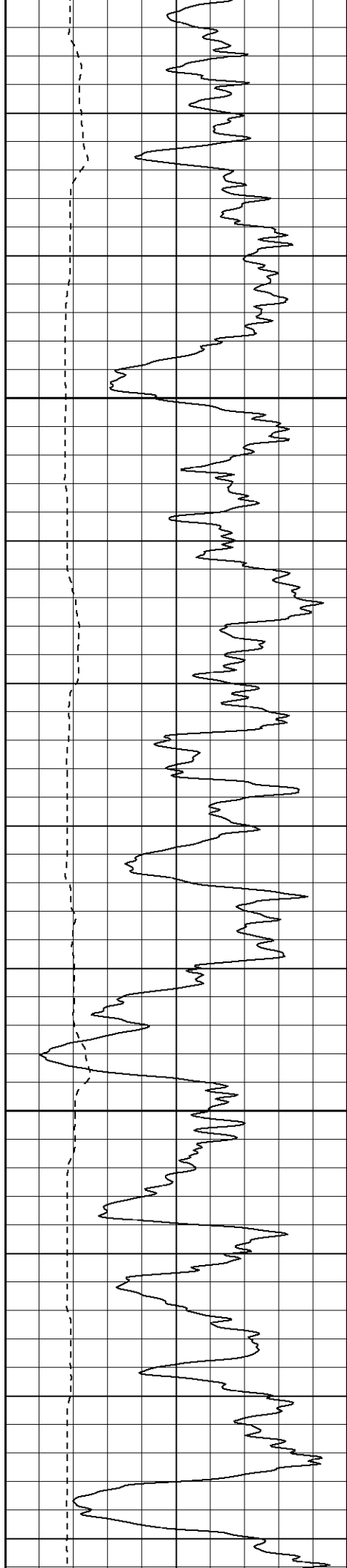
Surface Casing

250



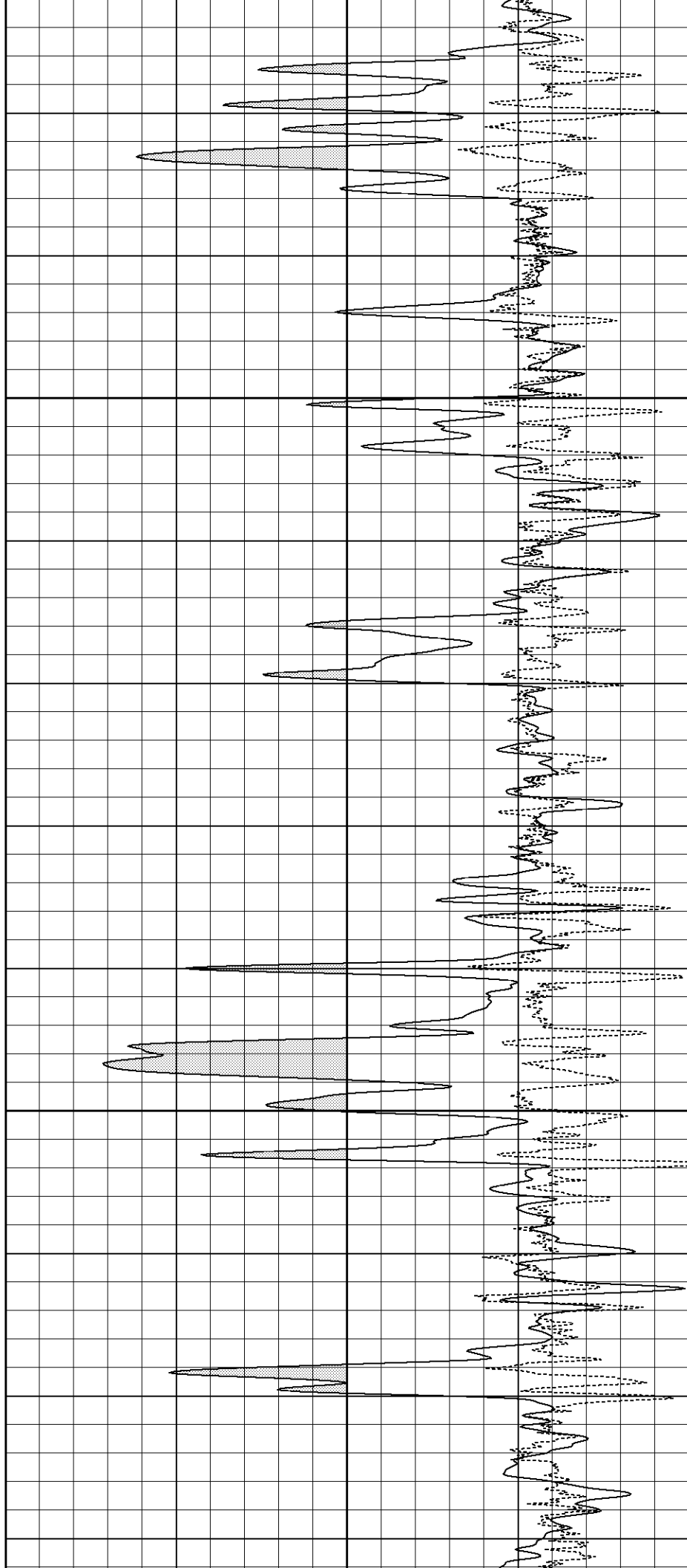


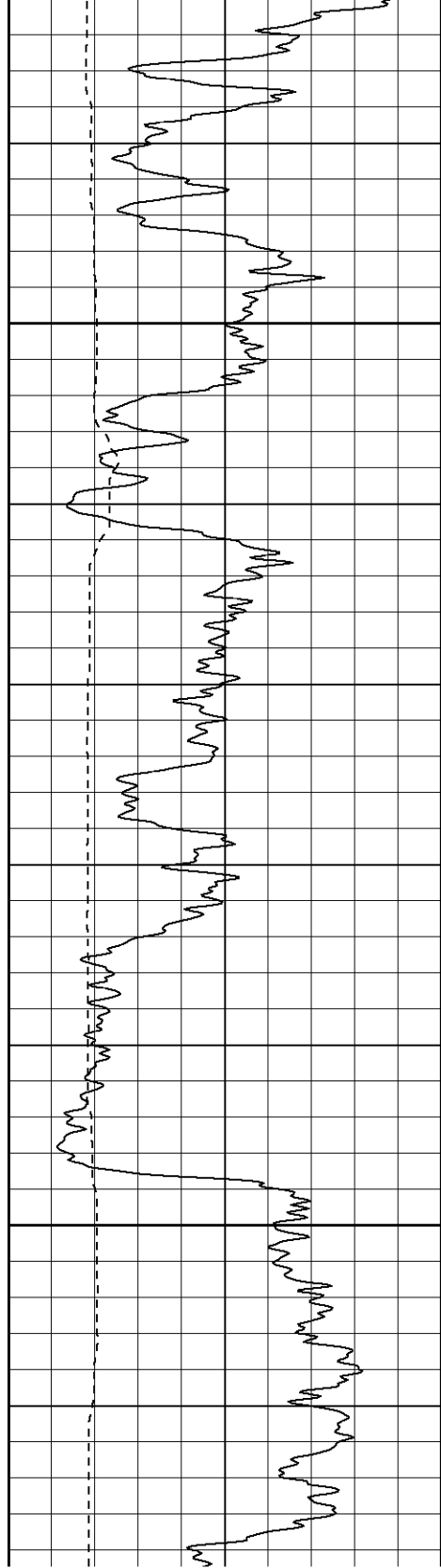




550

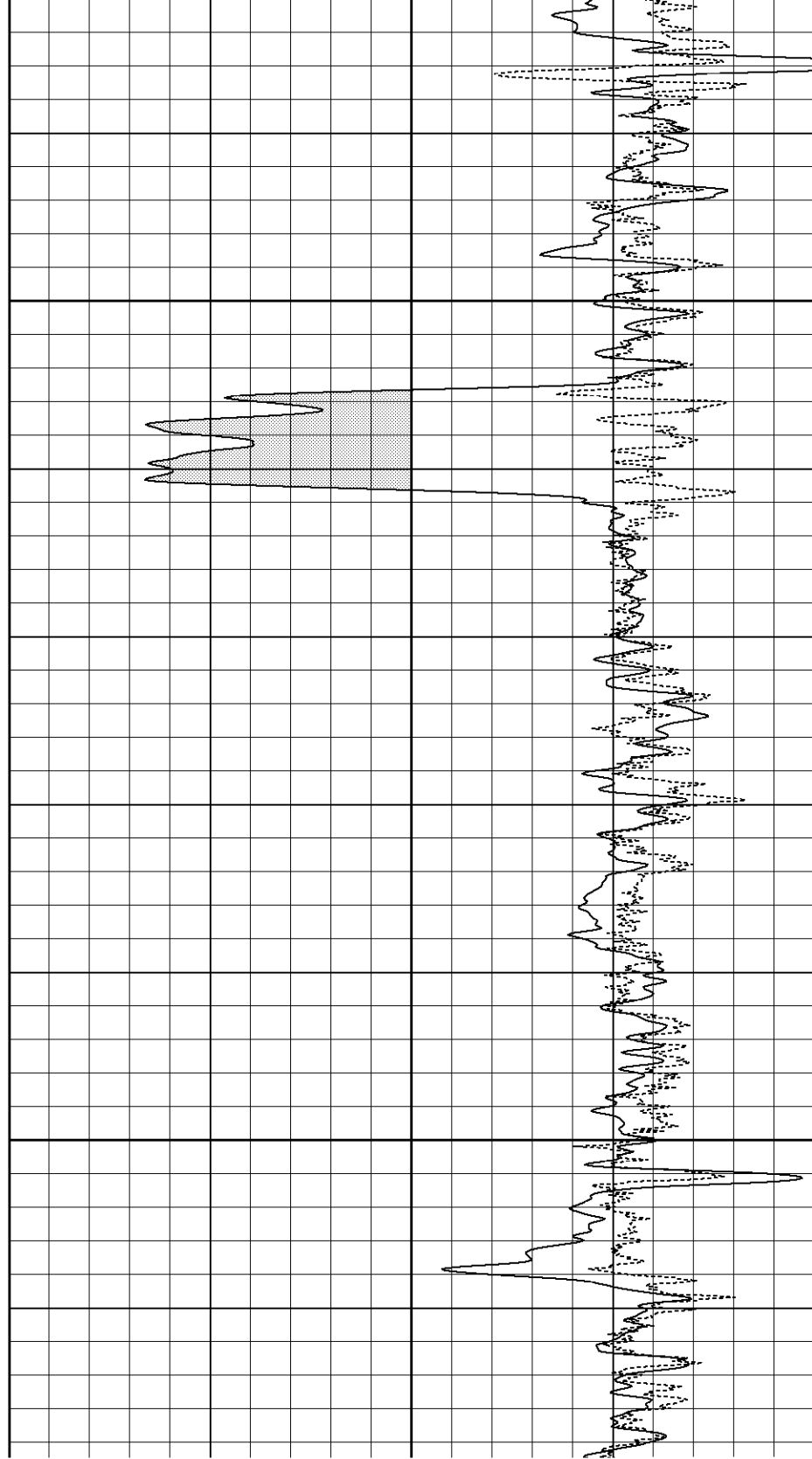
600

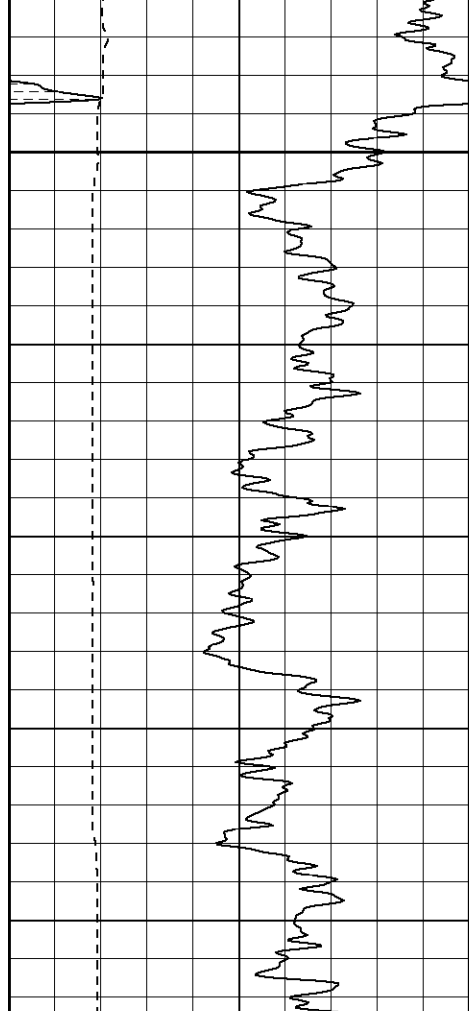




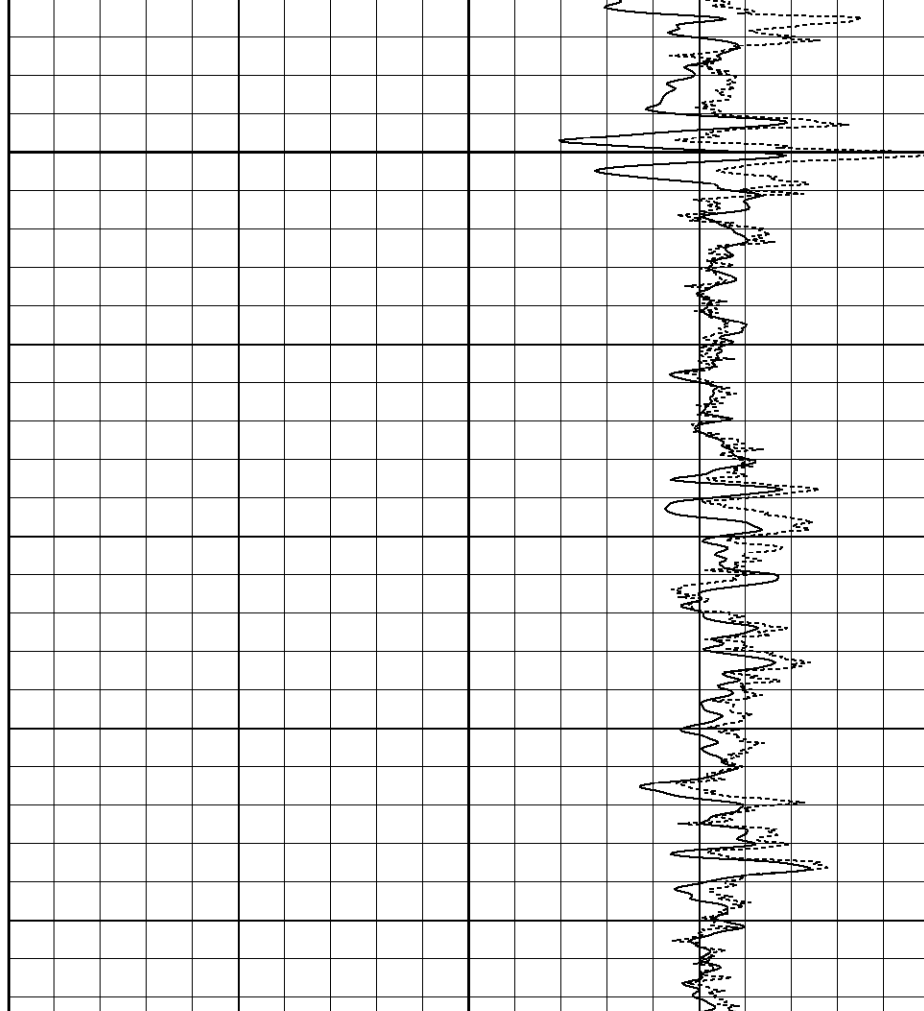
650

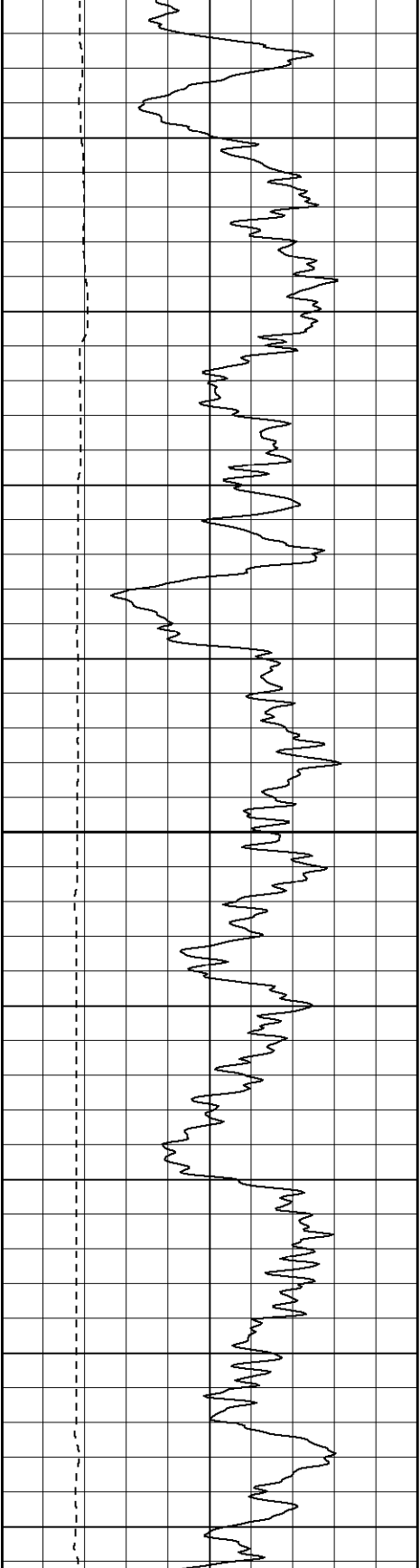
700



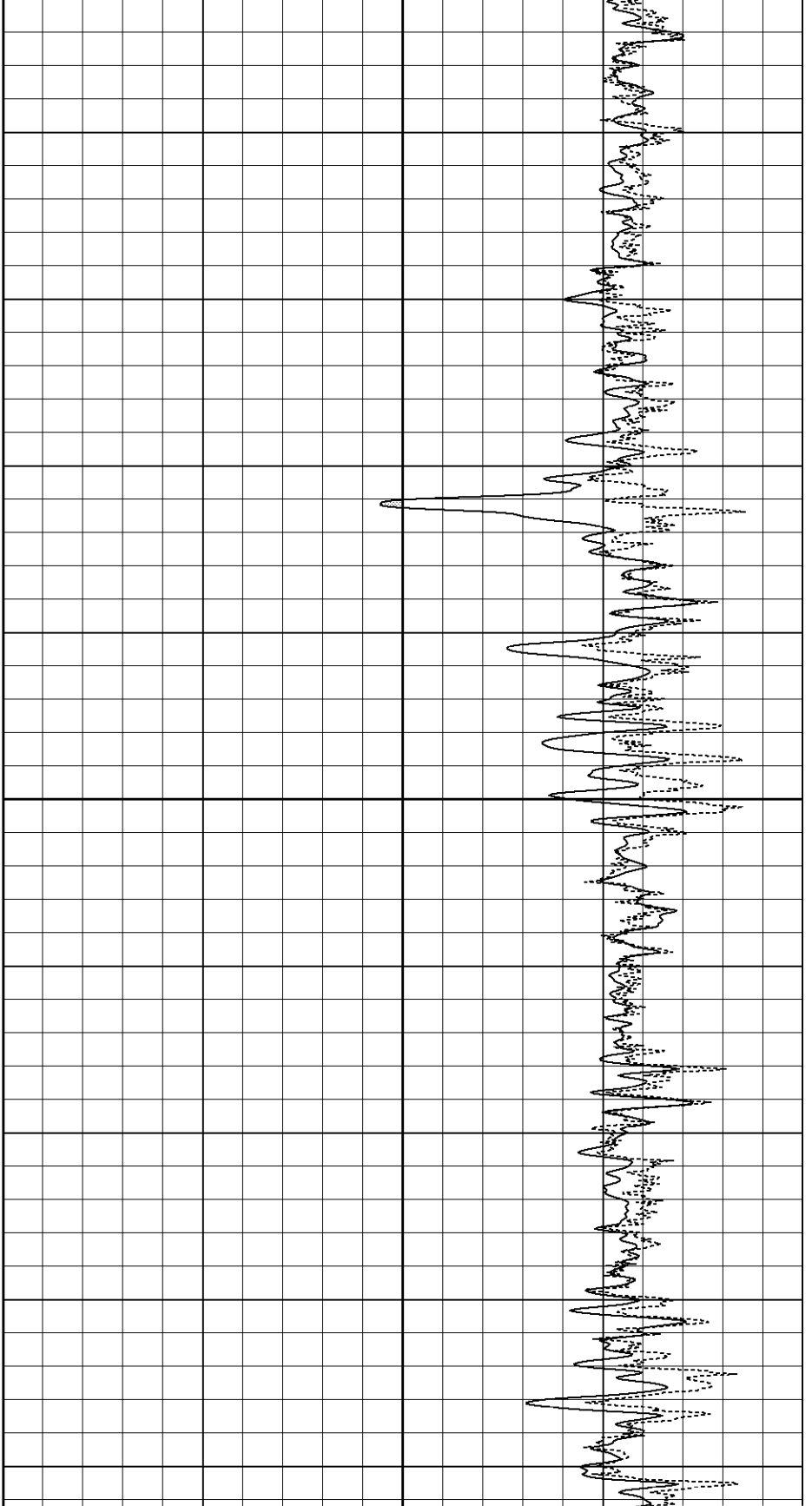


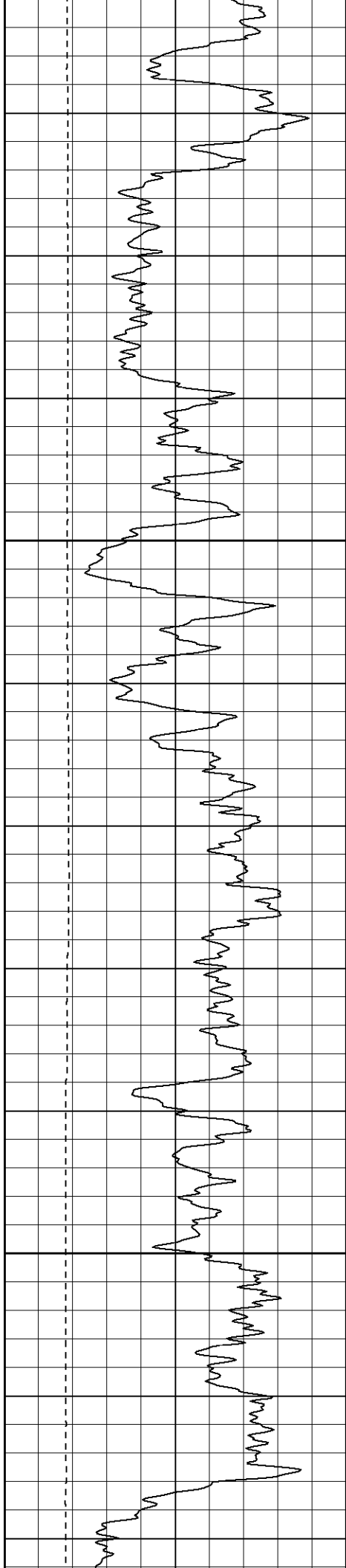
750





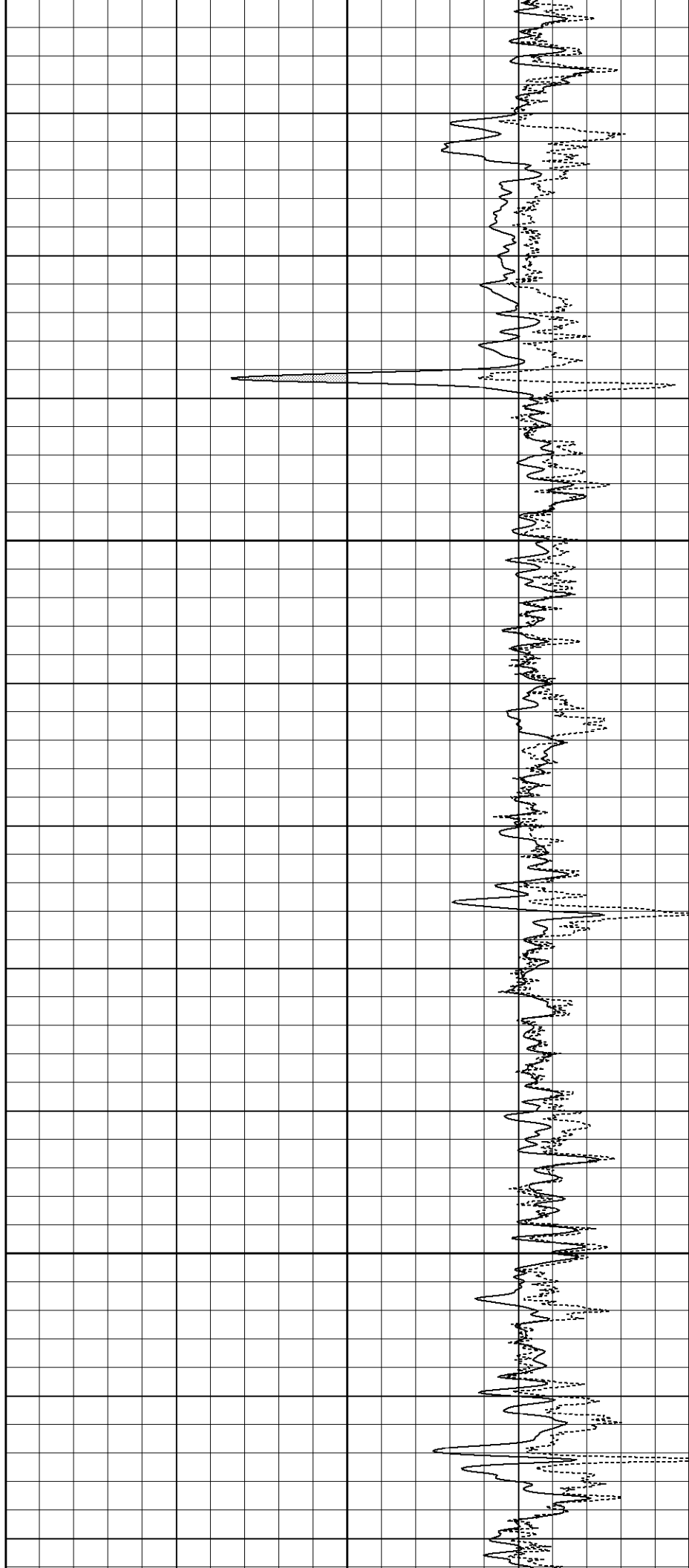
900

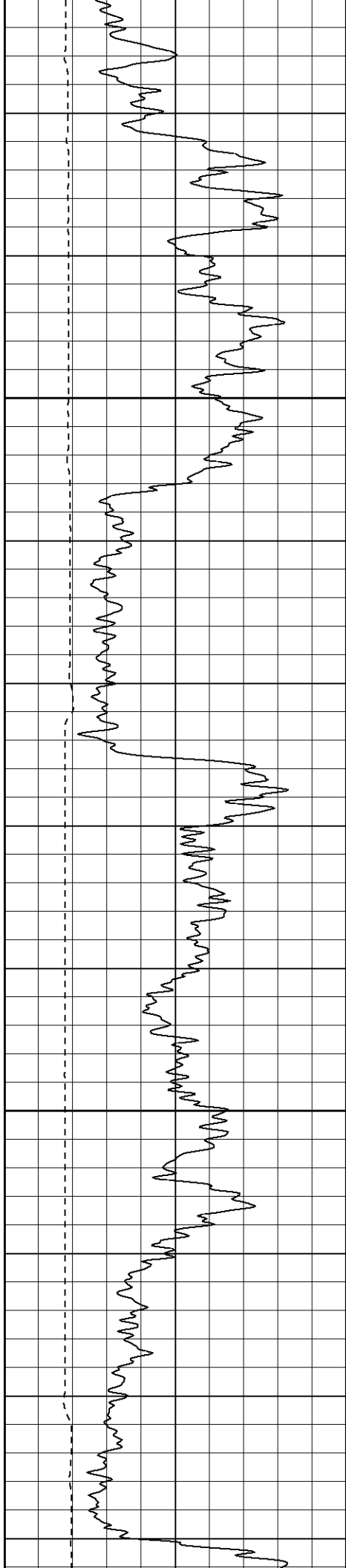




1000

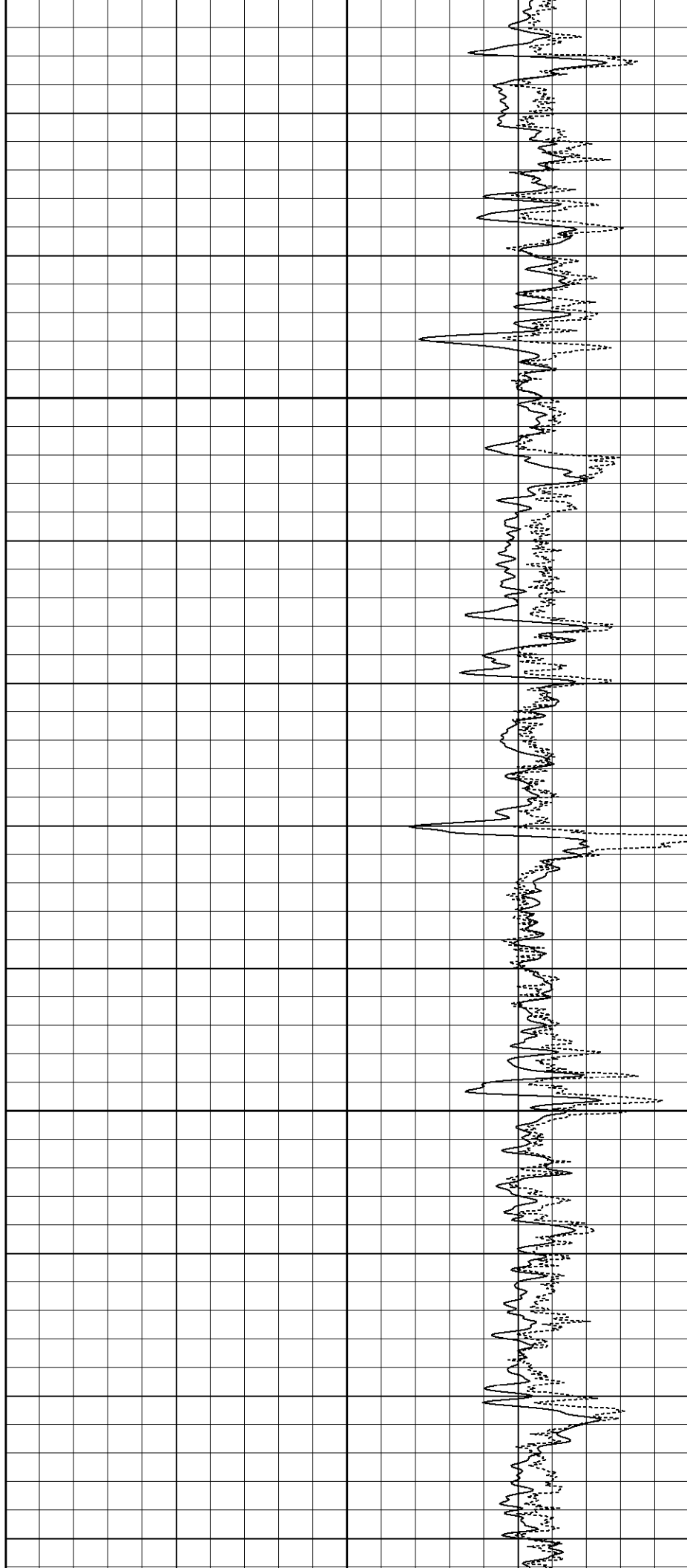
1050

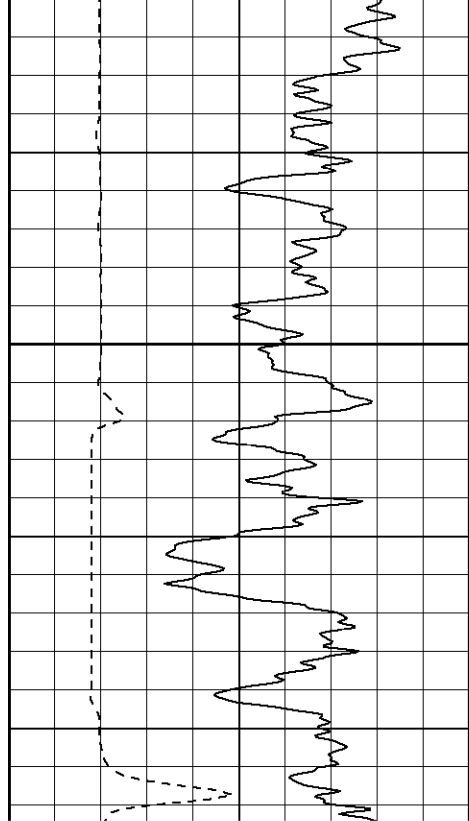




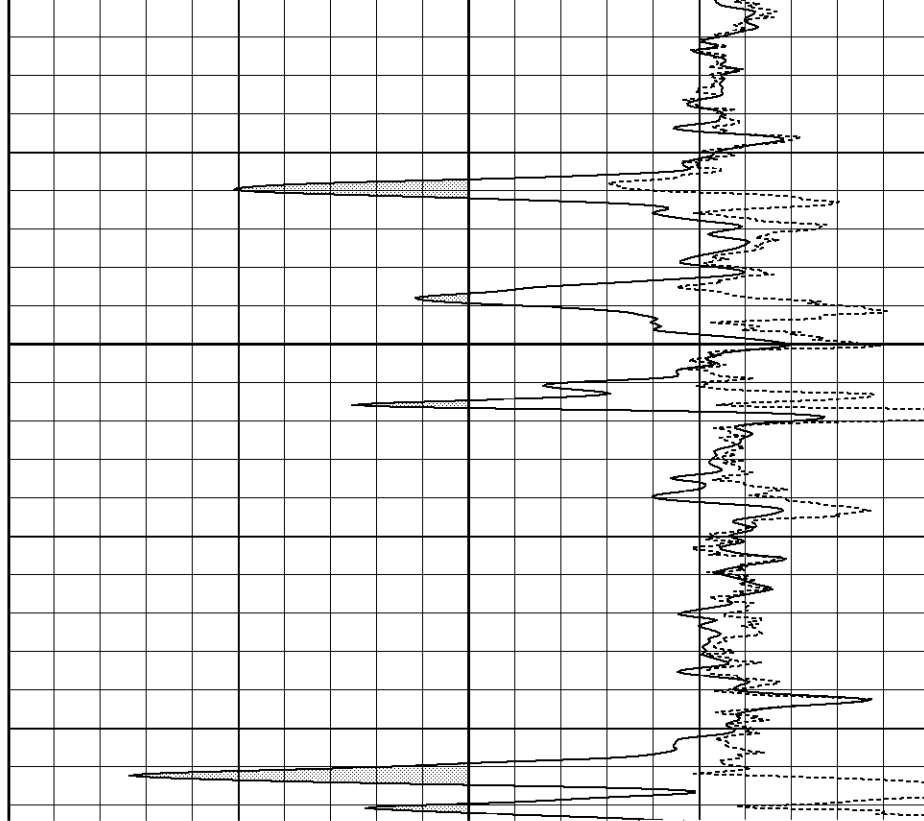
1100

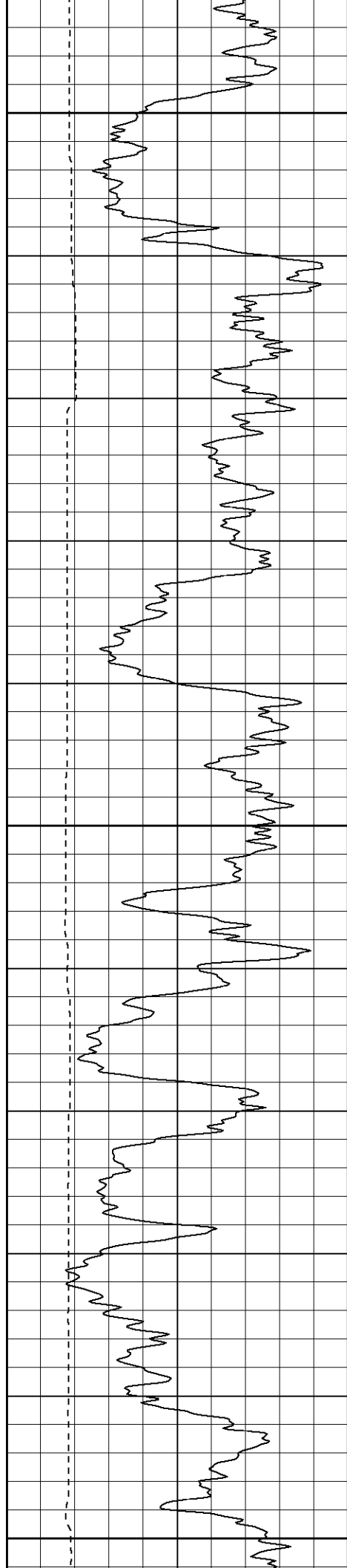
1150





1200

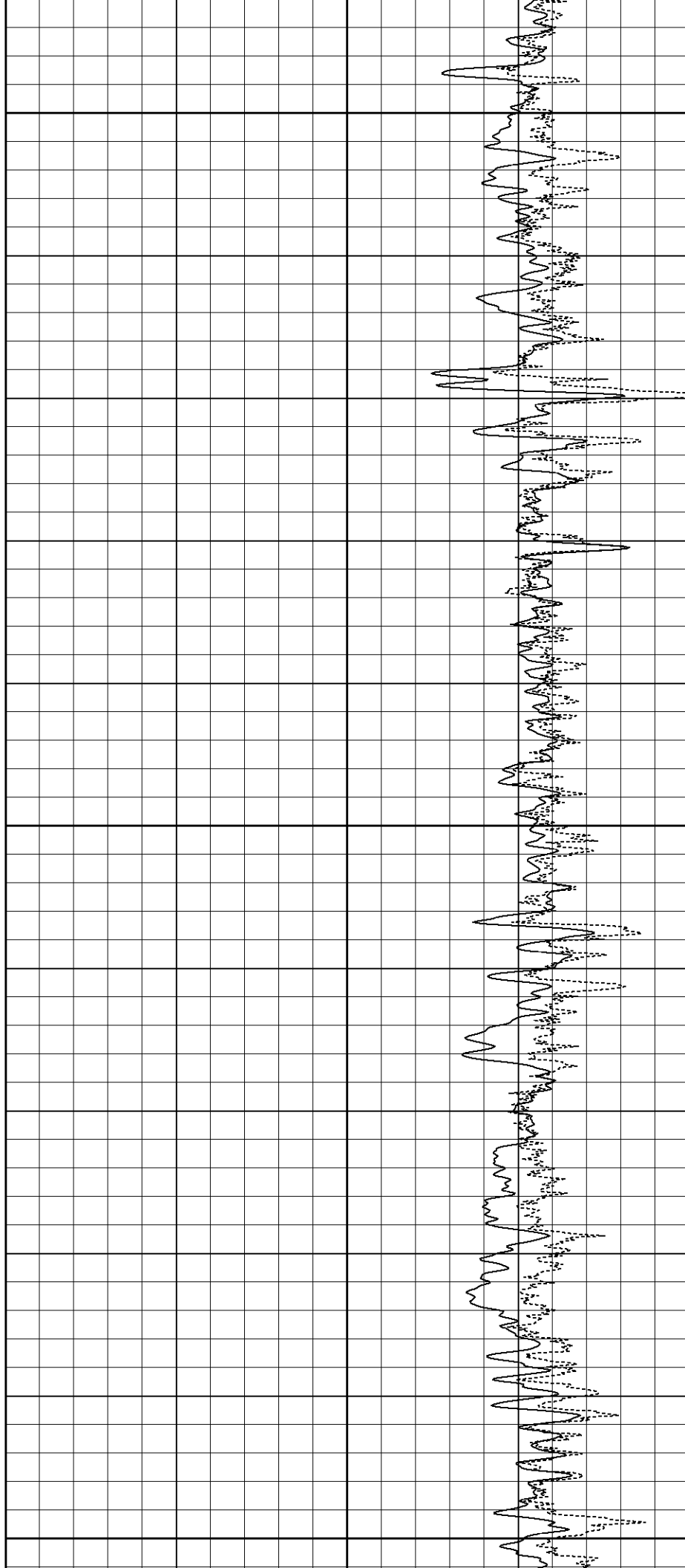


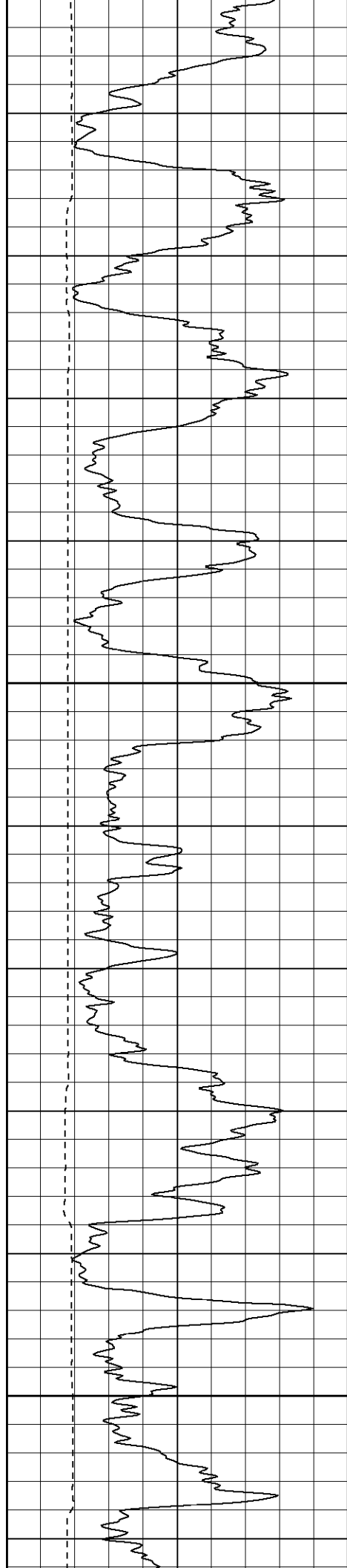


1300

1350

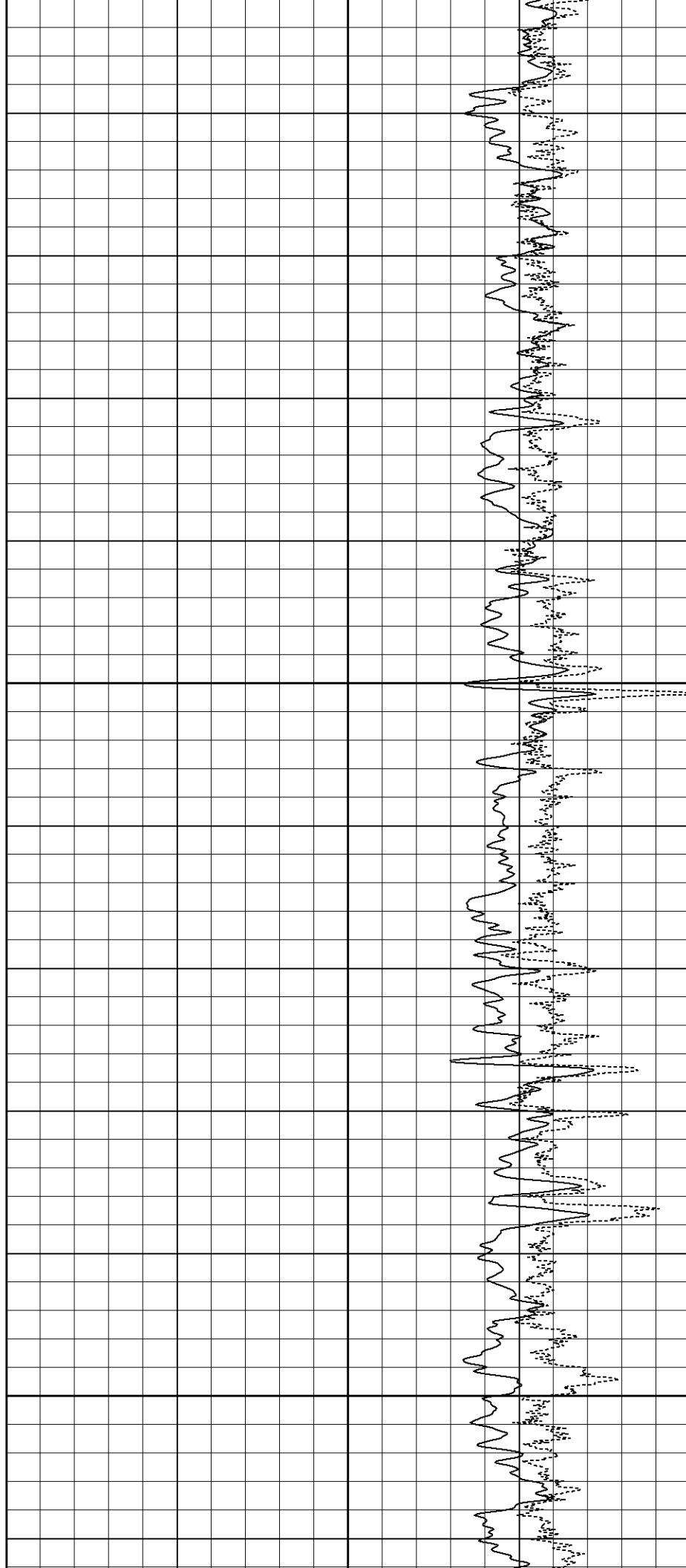
1400

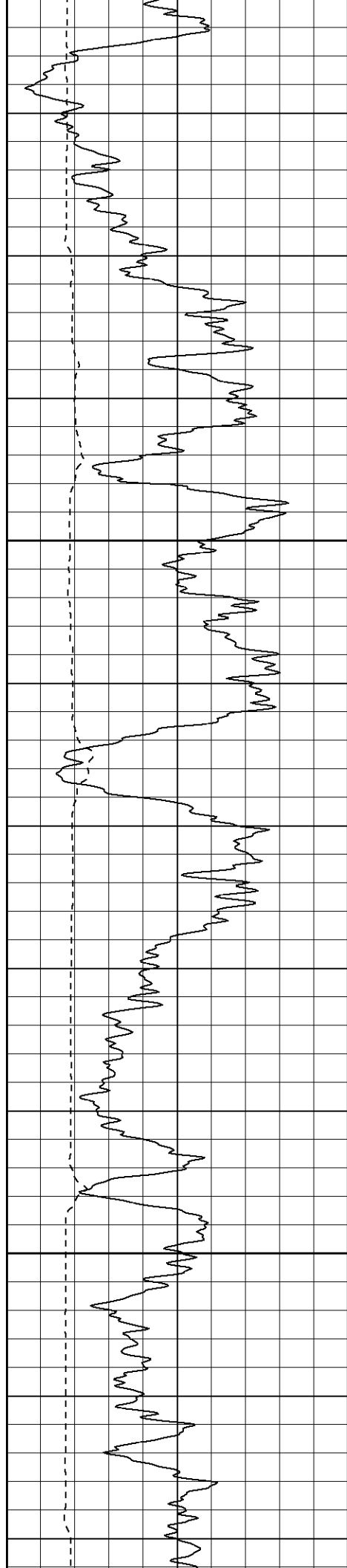




1450

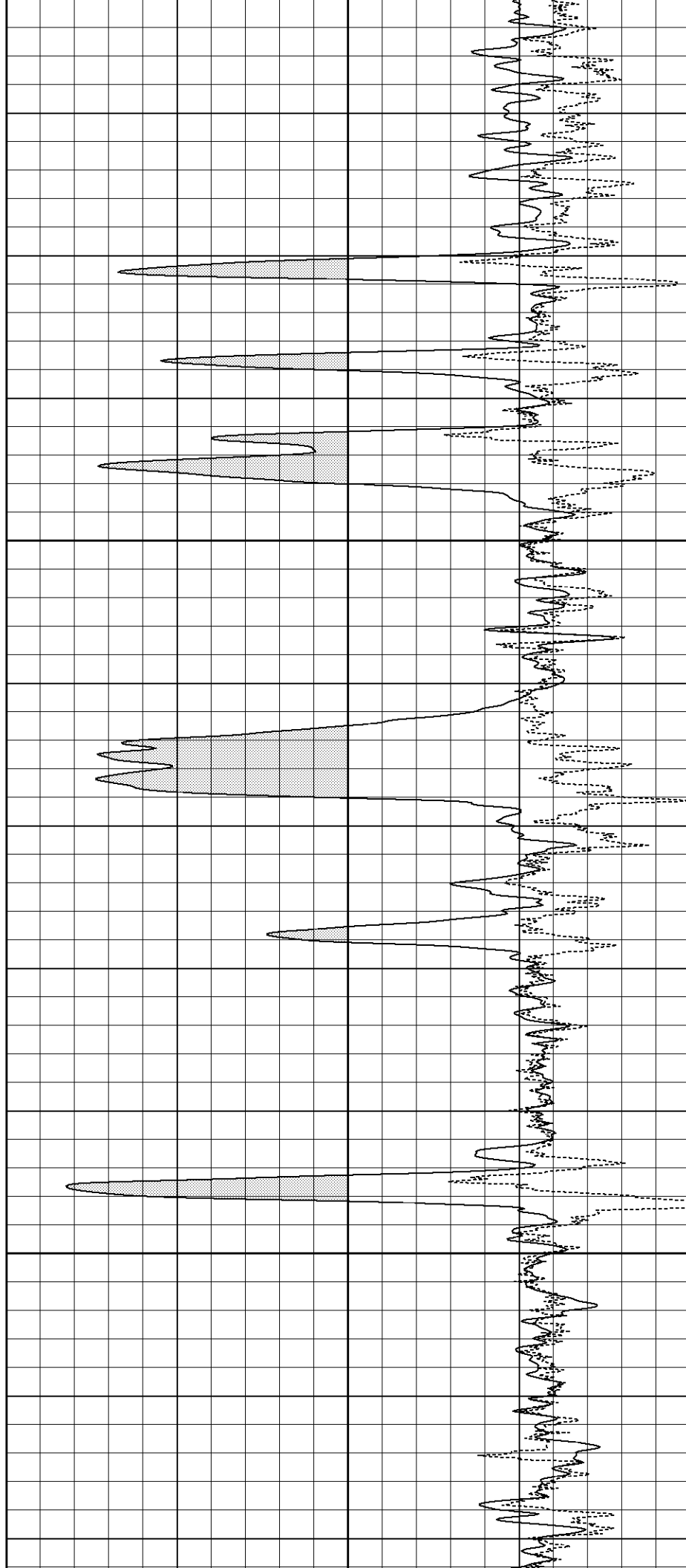
1500

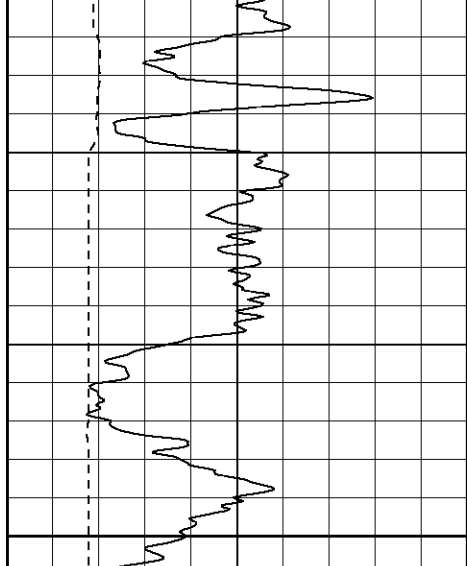




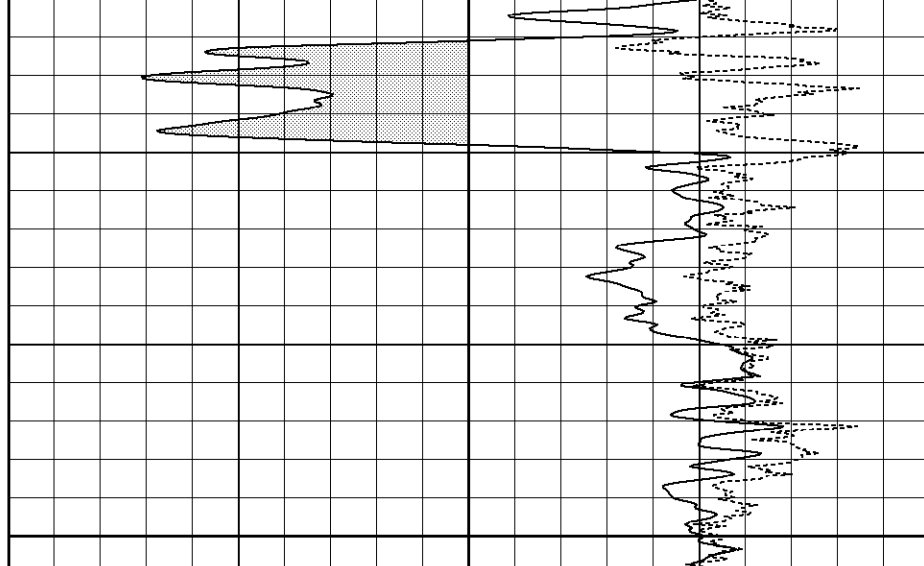
1550

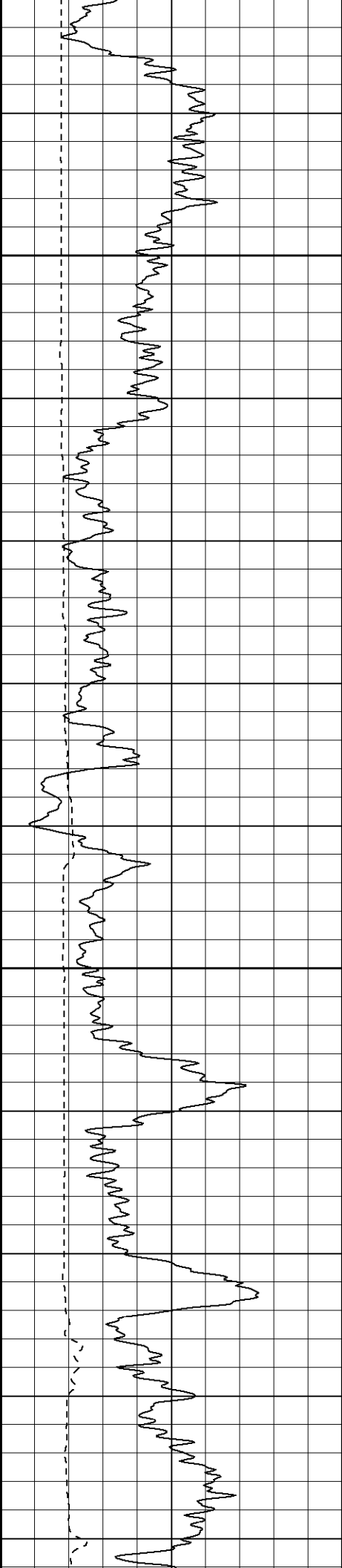
1600





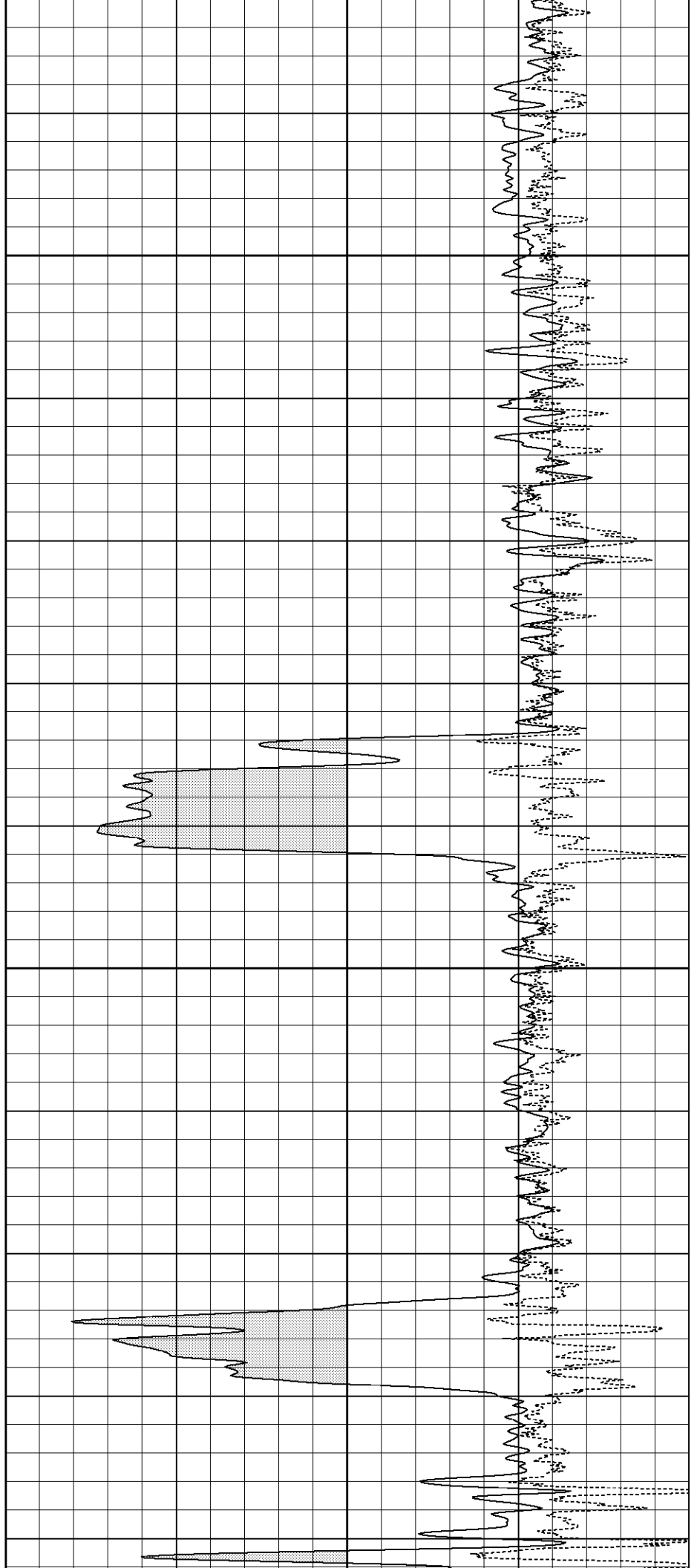
1650

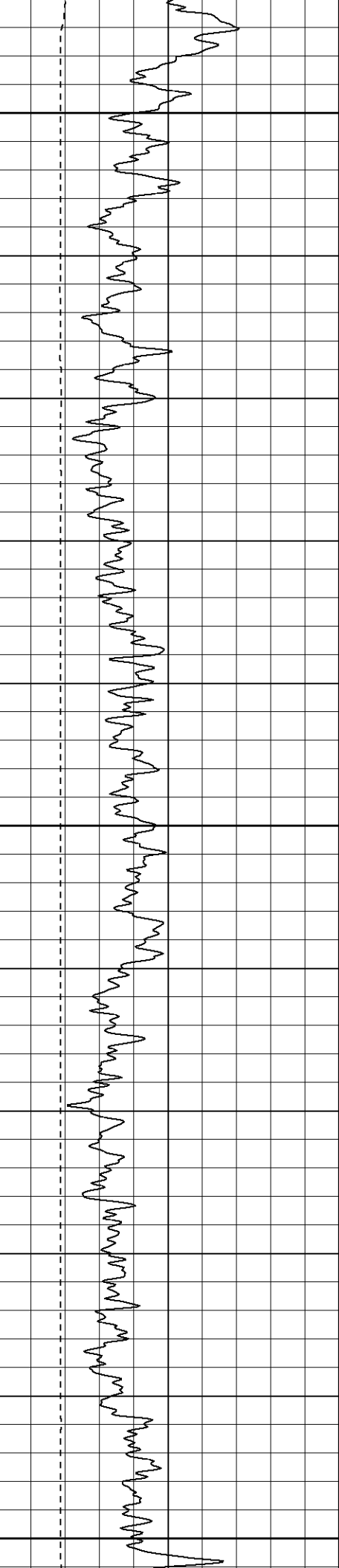




1750

1800

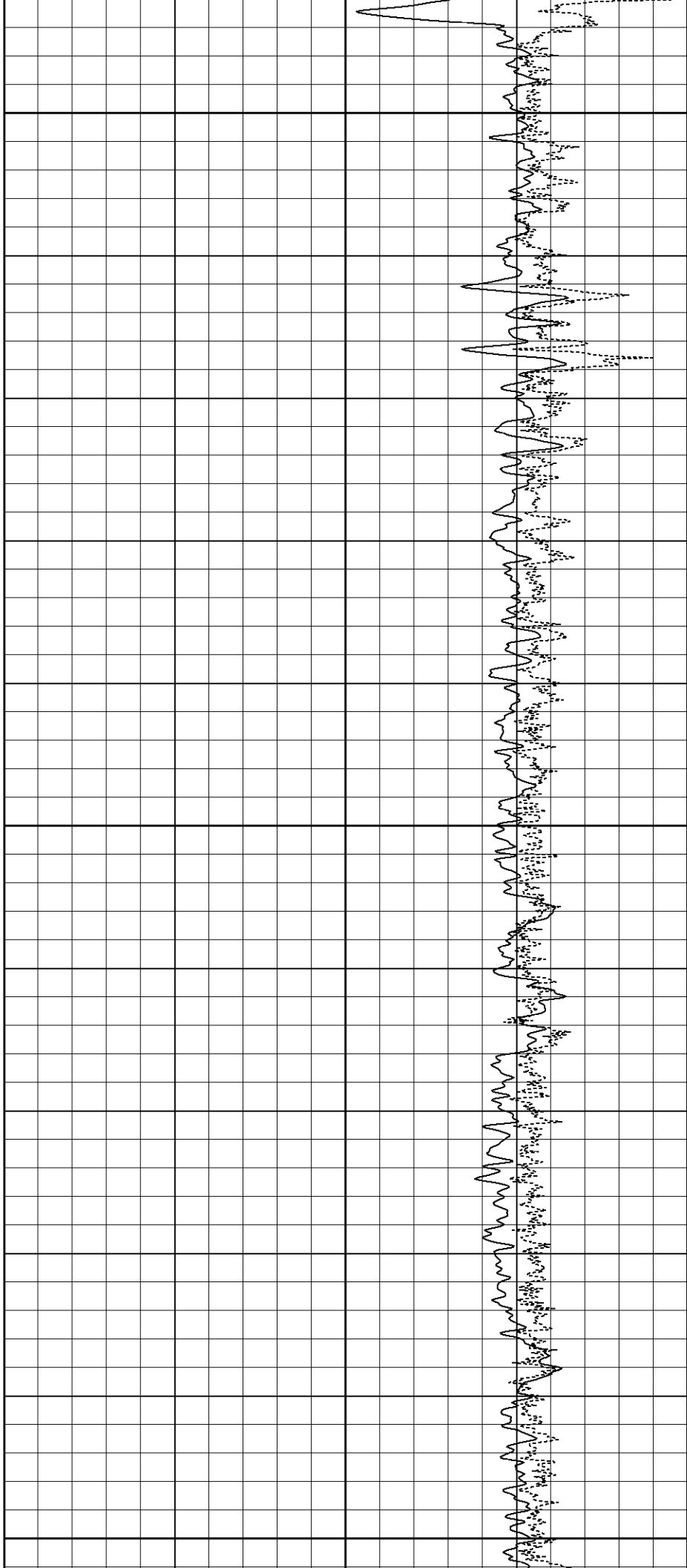


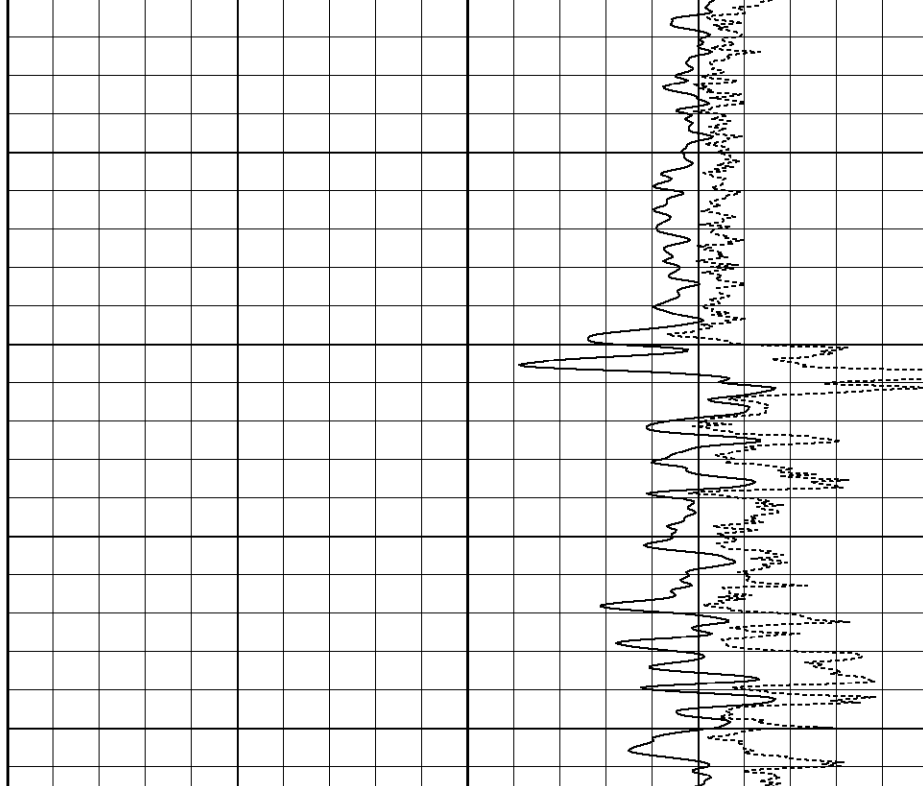
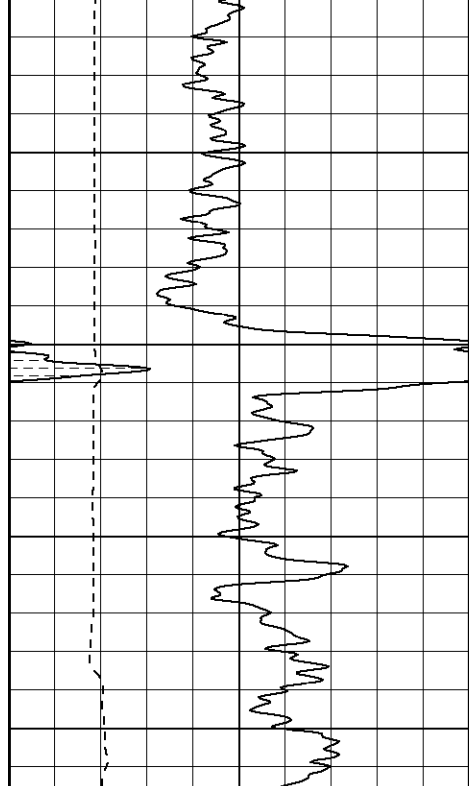


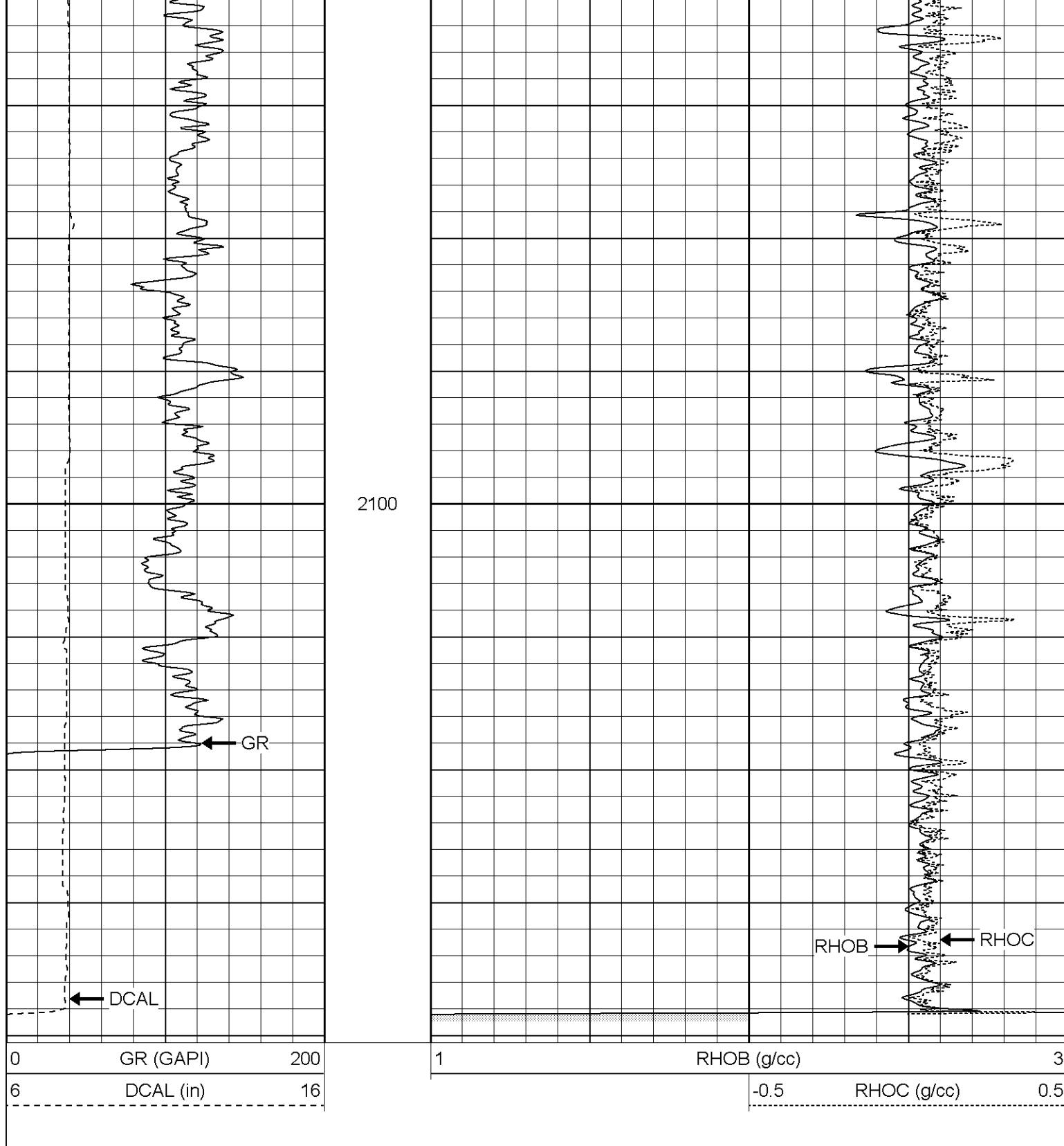
1850

1900

1950







Compensated Density Calibration Report

Serial-Model: 2119-O
 Source / Verifier: csv-j12 / blks
 Master Calibration Performed: Tue Aug 08 17:44:11 2006

Master Calibration

	Density		Far Detector	Near Detector	
Magnesium	1.710	g/cc	1000.00	609.00	cps
Aluminum	2.590	g/cc	223.00	412.00	cps

Density/Spine Ratio = 0.568

	Size		Reading	
Small Ring	7.85	in	5.00	V
Large Ring	14.00	in	8.81	V

Gamma Ray Calibration Report

Serial Number:	2119	
Tool Model:	O	
Performed:	Tue Aug 08 07:48:48 2006	
Calibrator Value:	170.0	GAPI
Background Reading:	42.6	cps
Calibrator Reading:	139.0	cps
Sensitivity:	0.7000	GAPI/cps

Neutron Calibration Report

Serial Number:	5138	
Tool Model:	G	
Performed:	Mon Aug 07 11:37:44 2006	
Calibrator Value:	1	NAPI
Calibrator Reading:	1	cps
Sensitivity:	1	NAPI/cps

Sensor	Offset (ft)	Schematic	Description	Len (ft)	OD (in)	Wt (lb)
NEU	12.44		NEU-G (5138) Gearhart Epithermal	5.75	3.50	85.00
GR	7.64		GR-O (2119) Oilex	2.60	3.63	74.00
LSD	2.13		CDL-O (2119) Oilex	5.77	4.00	201.00
DCAL SSD	1.79 1.58					
		Dataset:	/field/well/run/_plots/_jobs_/cdl			
		Total Length:	14.12 ft			
		Total Weight:	360.00 lb			
		O.D.	4.00 in			