

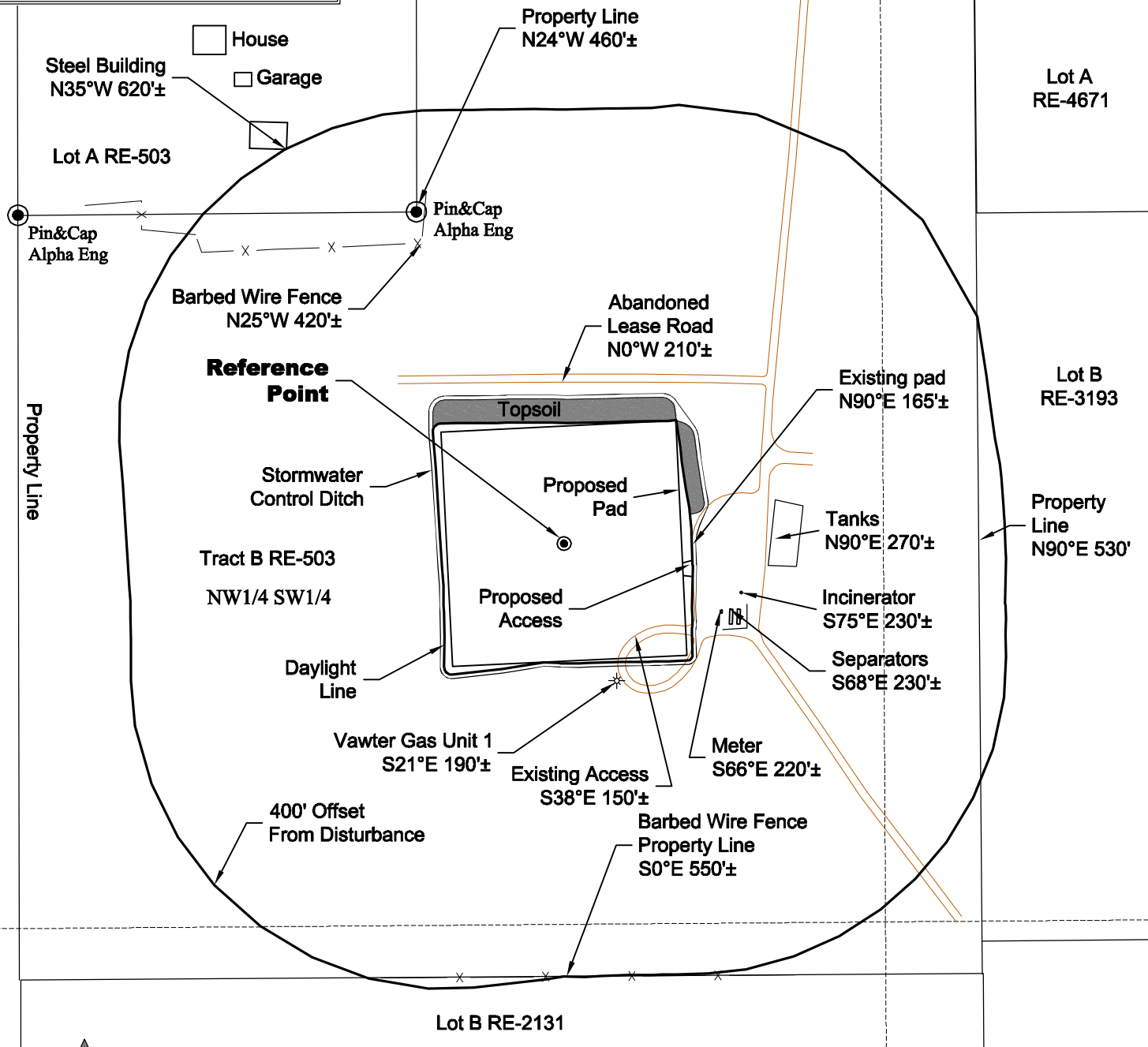
# LOCATION DRAWING

## REFERENCE POINT

LATITUDE: 40.07808  
 LONGITUDE: -104.75044  
 FOOTAGE: 1790 FSL 906 FWL  
 GROUND ELEVATION: 5113.7  
 PDOP: 2.0 DATE: 6/1/2011  
 INSTRUMENT OPERATOR:  
 George Allen

VEGETATION:  
 DISTURBED GRASSLAND

HWY 52



North

0 200 400  
 Graphic Scale in Feet  
 1 inch = 200 feet

DISTURBANCE ACREAGE:  
 2.8± DRILLING OPERATIONS  
 1.0± INTERIM RECLAIM

6/6/11



LAND SURVEYING AND MAPPING  
 LAFAYETTE - WINTER PARK  
 Ph 303 666 0379 Fx 303 665 6320

ENPROP, INC.  
 VAWTER 20-2 PAD

NW1/4 SW1/4 SEC. 2 T1N R66W  
 6th PM WELD COUNTY COLORADO