

Two

marked +3298

MERCURY WIRELINE

CHEYENNE WELLS CO.

719-767-5522

DUAL INDUCTION LOG

FILING NO.

COMPANY TEXAS COLORADO PETROLEUM

WELL MC COMB NO 5

FIELD WILDCAT

COUNTY HUERFANO

STATE CO

LOCATION

1528 FNL 538 FNL

OTHER SERVICE

DIL/COL

SEC 1

TWP 28S

RGE 67W

PERMANENT DATUM GL
LOG MEASURED FROM KB , 8 FT. ABOVE PERMANENT DATUM
DRILLING MEASURED FROM KBELEVATIONS
KB 6458
OF
GL 6450

DATE 21 SEPT 1992

RUN NO. ONE

DEPTH DRILLER 3664

DEPTH LOGGER 3649

BOTTOM LOGGED INT. 3649

TOP LOGGED INT. 710

CASING DRILLER 708

CASING LOGGER 714

BIT SIZE 8 3/4

TYPE FLUID IN HOLE KCL WATER

DENSITY @ VISCOSITY 9.9 AND 55

PH AND FLUID LOSS NA AND NA

SOURCE OF SAMPLE FLOWLINE

RM @ MEAS. TEMP. 6.4 AT 71F

RMF @ MEAS. TEMP. 4.5 AT 71 F

RMC @ MEAS. TEMP. 8.0 AT 71 F

SOURCE OF RMF @ RMC CACL

RM @ BHT 4.0 AT 140F

TIME SINCE CIRC. 7 HR

MHX. REC. TEMP. F. 140

GAMMA RAY

TOOL TYPE PEI
TOOL NUMBER 902
TOOL DIA 4 IN
DET TYPE SCINTILLATION
DETECTOR LENGTH 6 IN
TIME CONSTANT 1

TOOL DATA

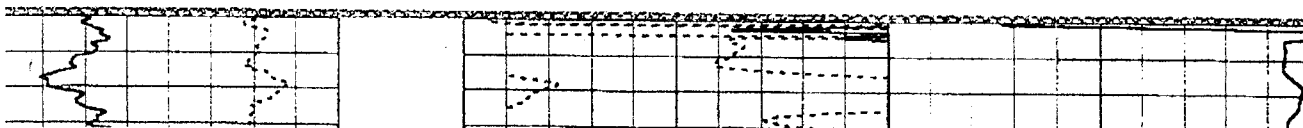
TOOL TYPE PEI
TOOL NUMBER RED
TOOL DIA 4 1/4

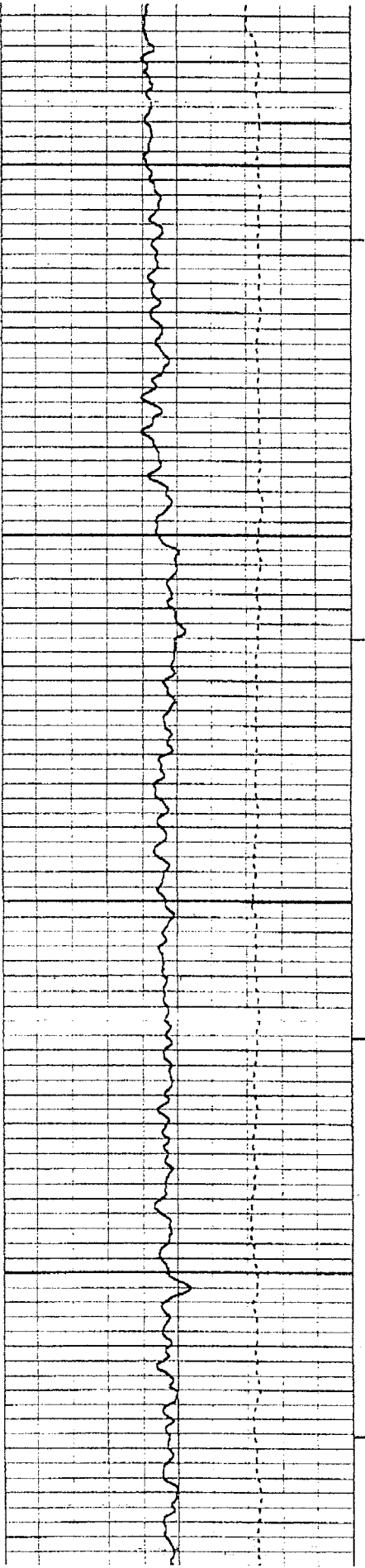
EQUIPMENT DATA

TYPE PEI
NUMBER 1029
NUMBER TR - 1
FIVITY OHMS-M
CTIVITY MILLIMHOS

5 1 1/2 STAND-OFFS USED ON DIL TOOL

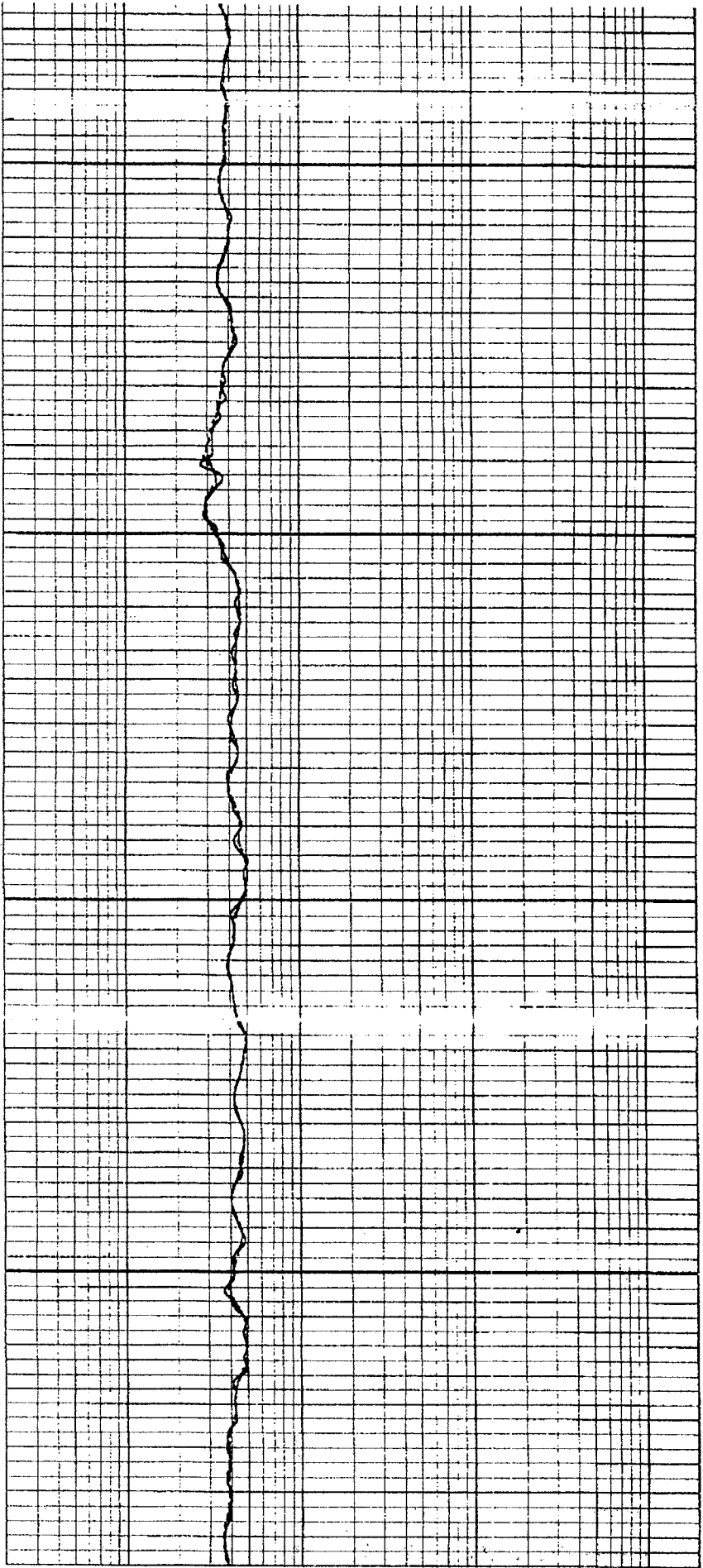
SP RAN ON A SCALE OF 20 MV PER DIVISION

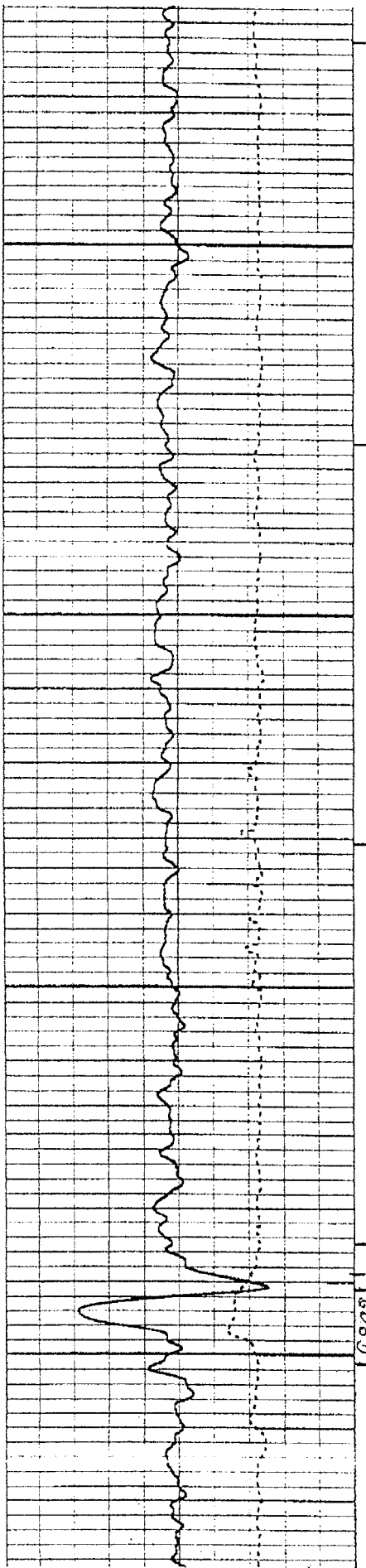




02000

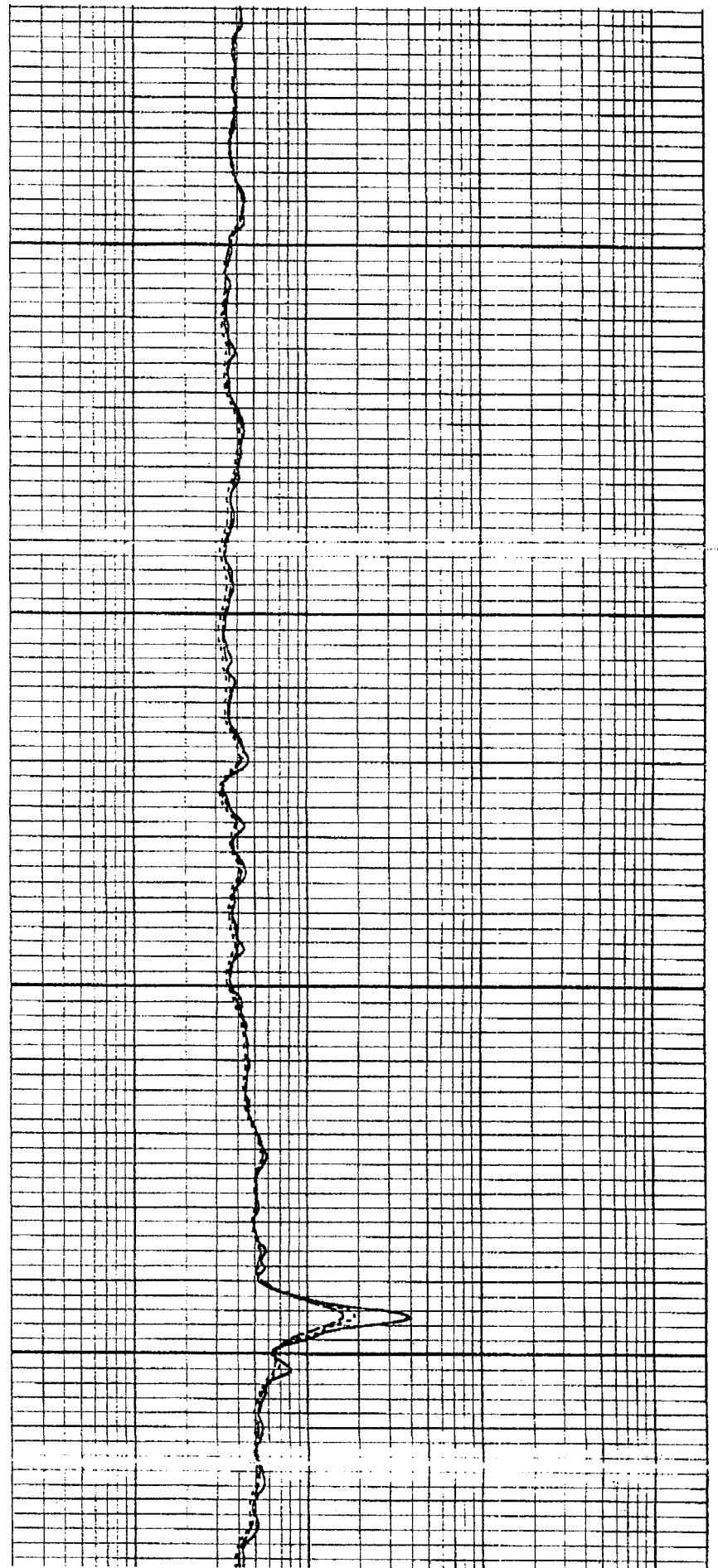
02100

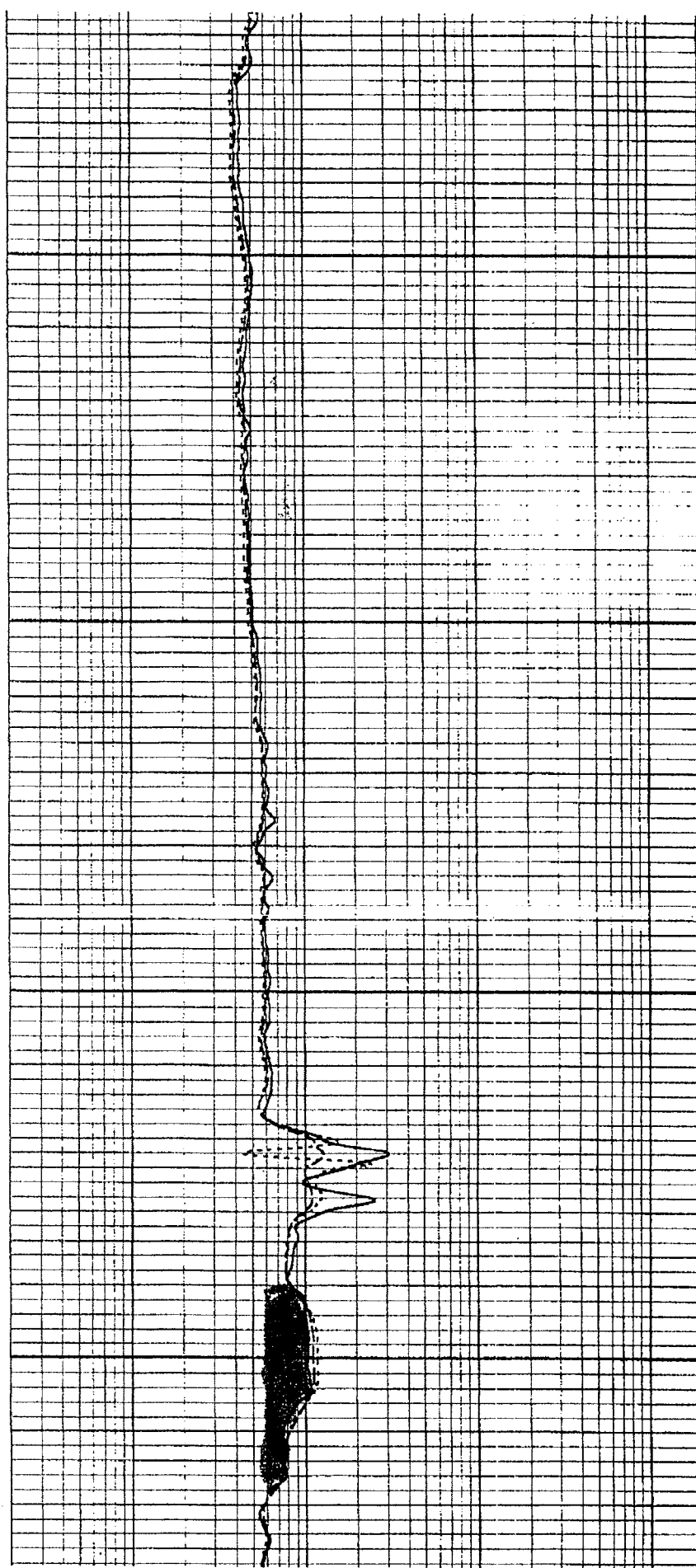
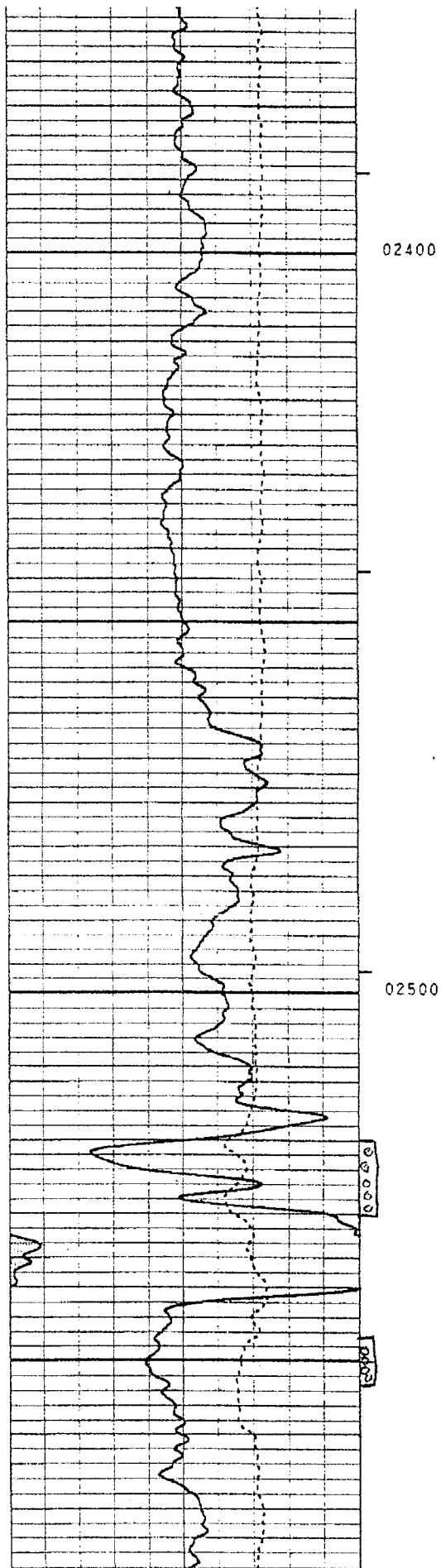


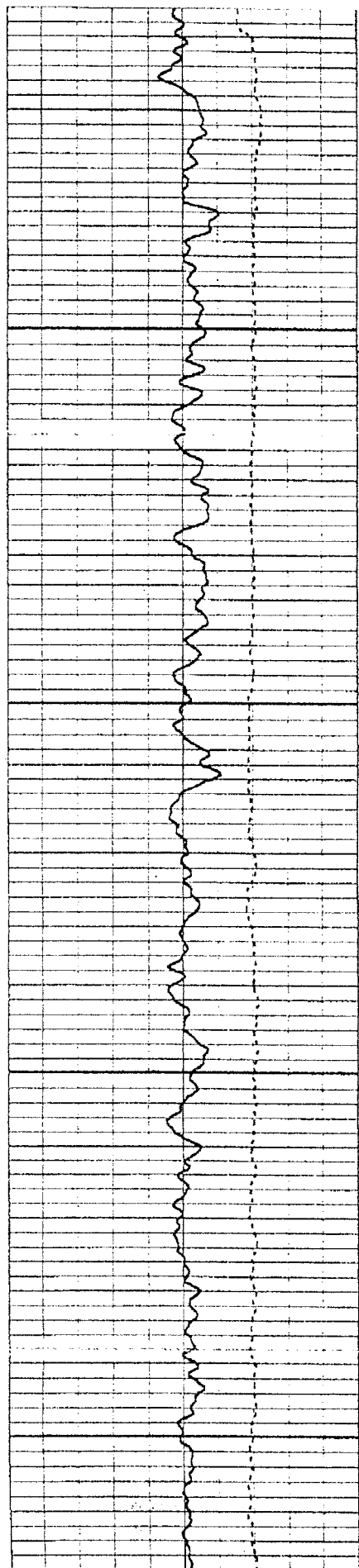


02200

02300

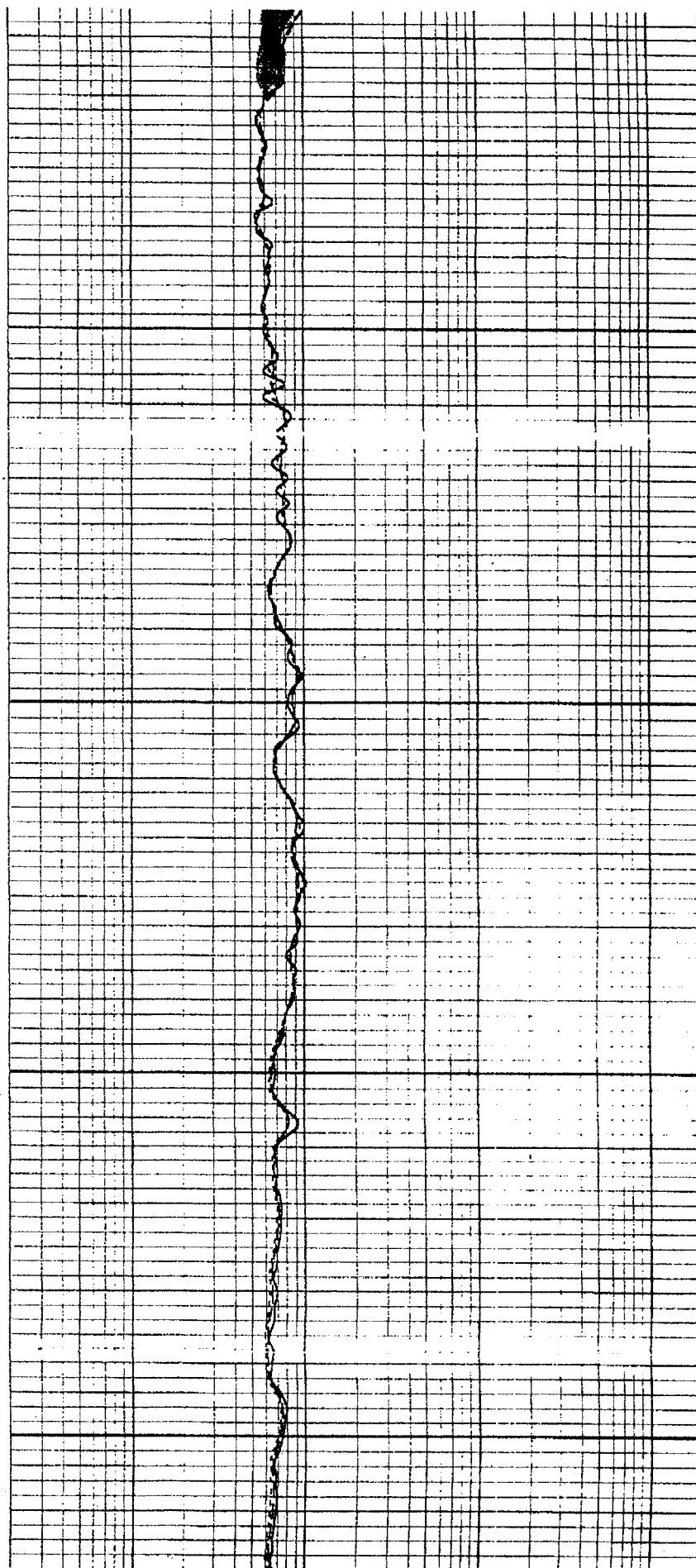


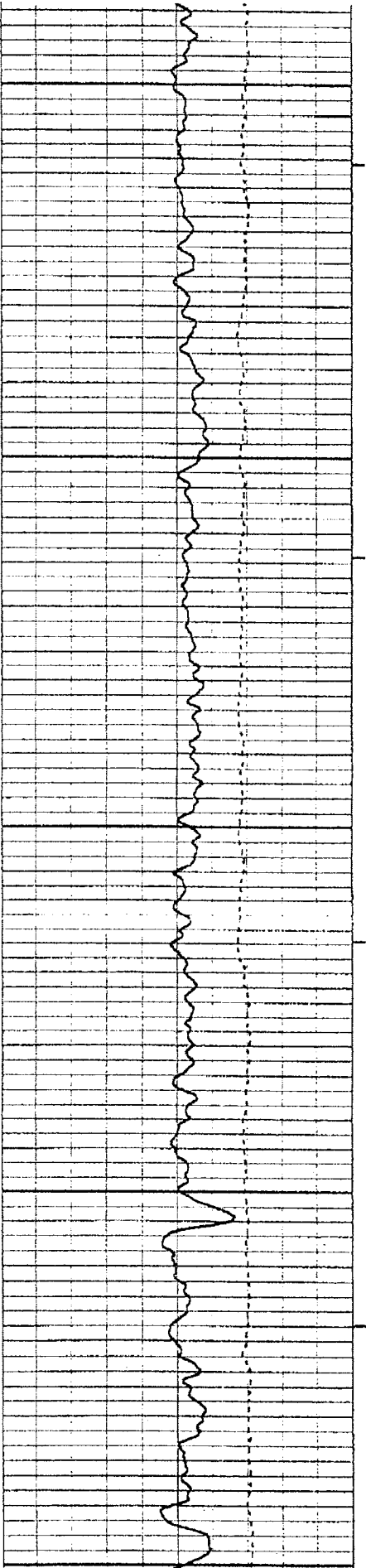




02600

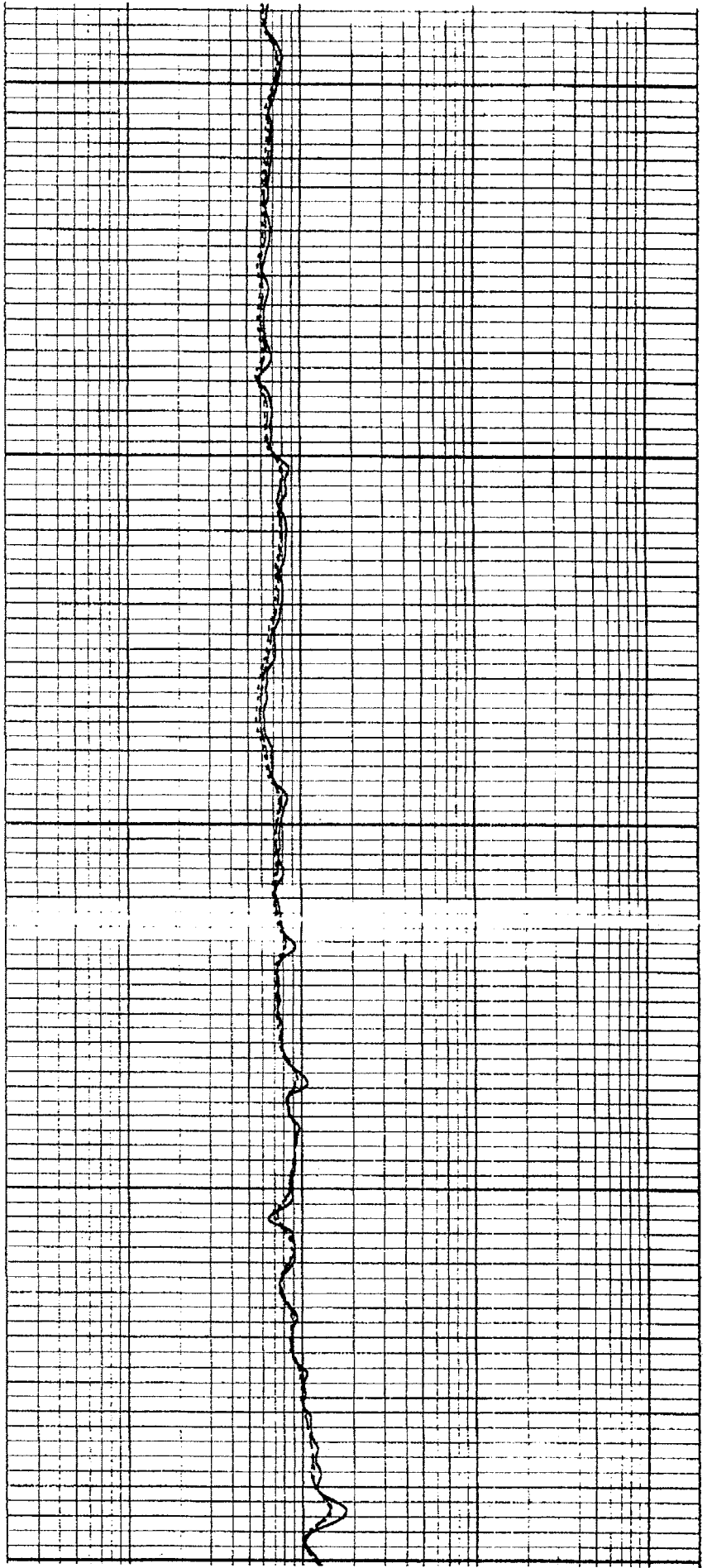
02700

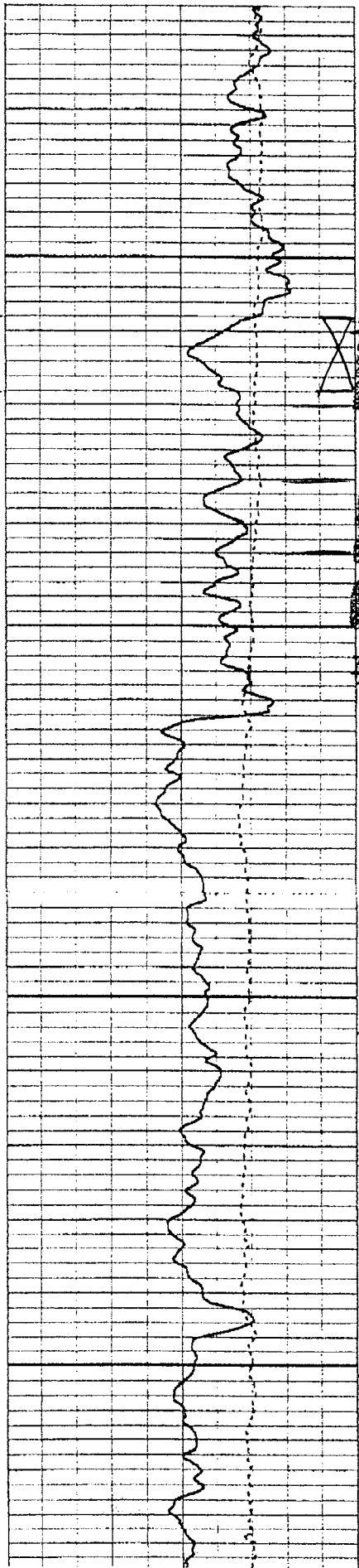




02800

02900





3158-64

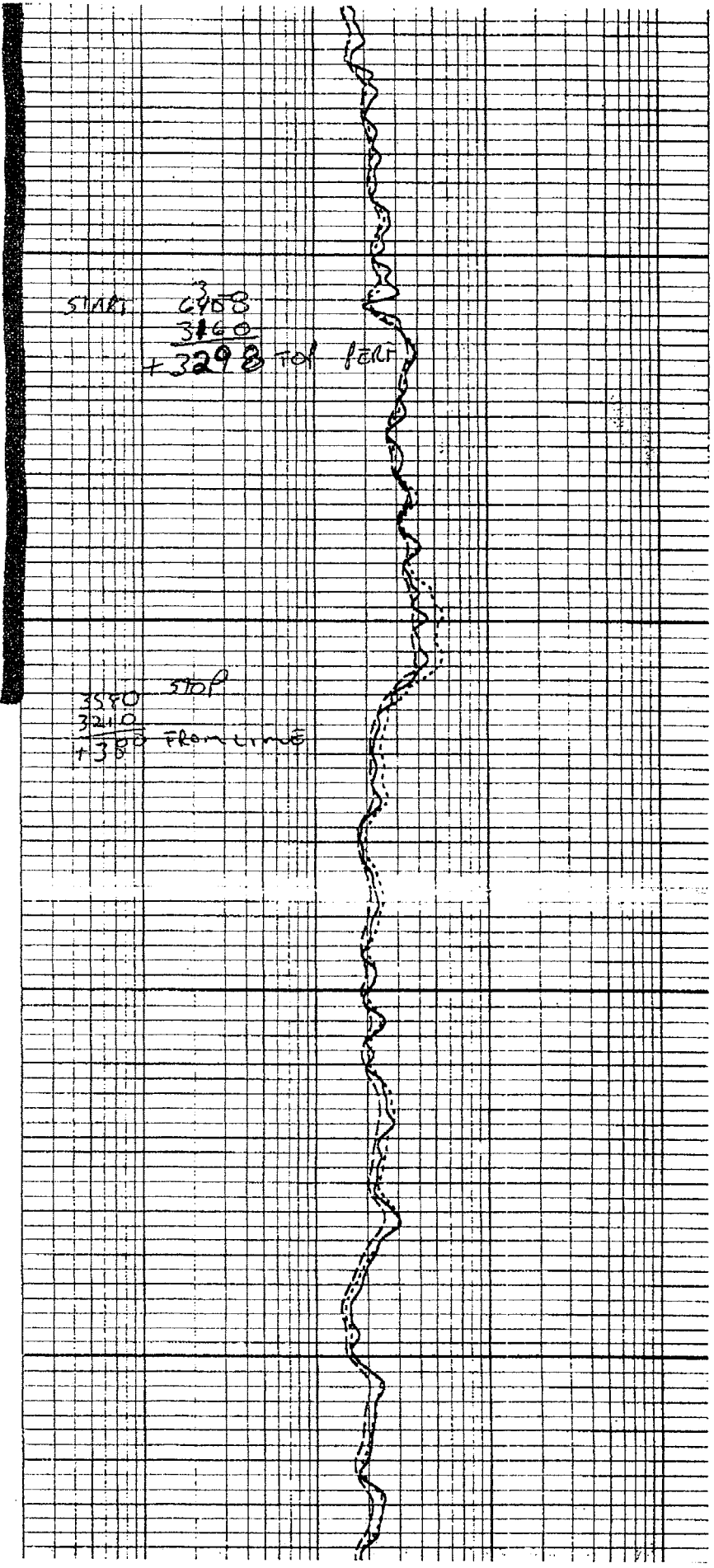
GAS well

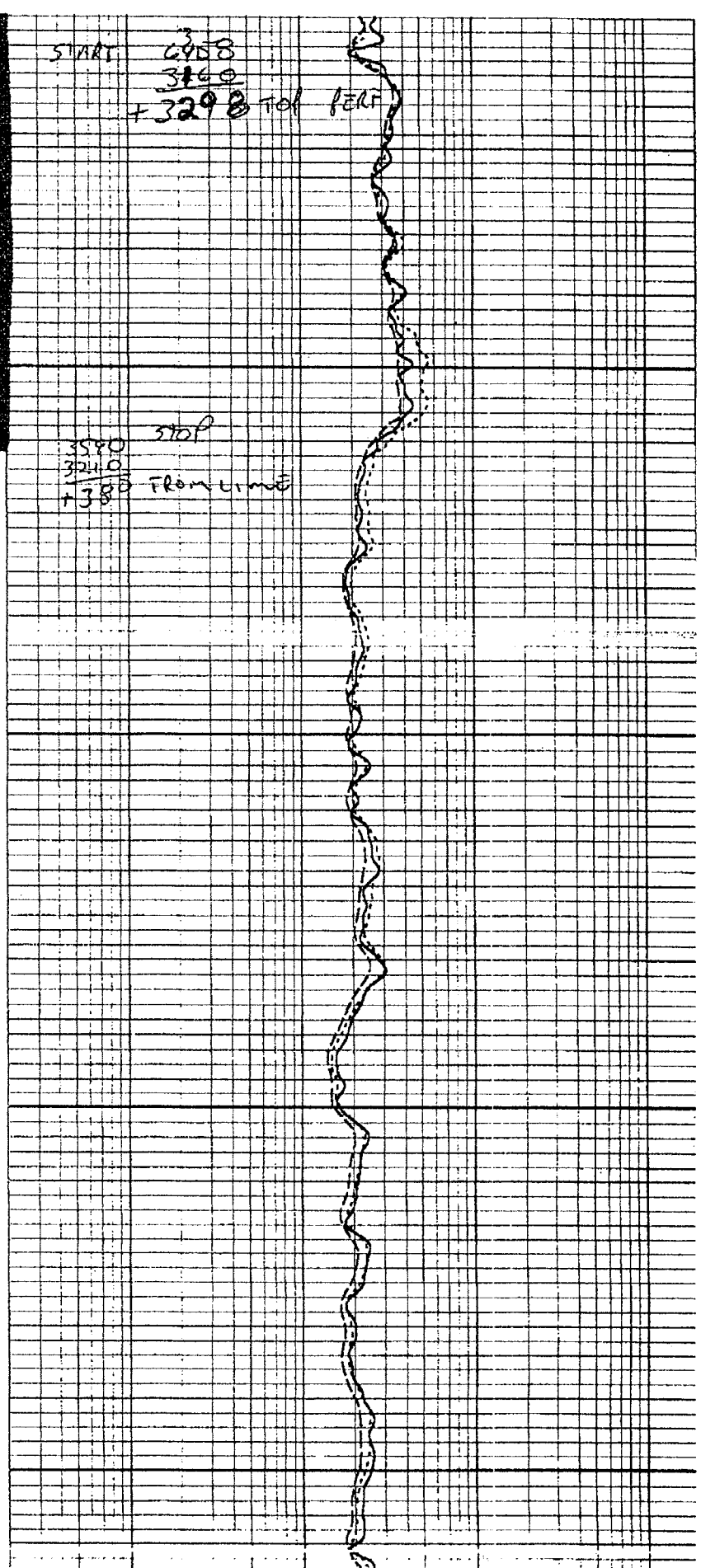
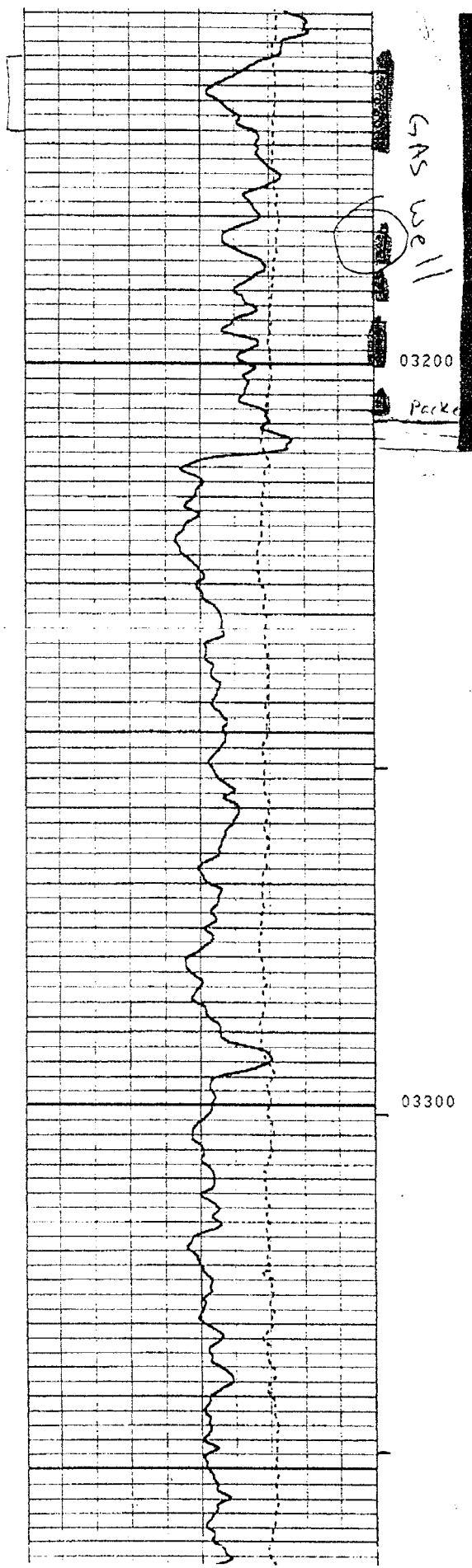
03200

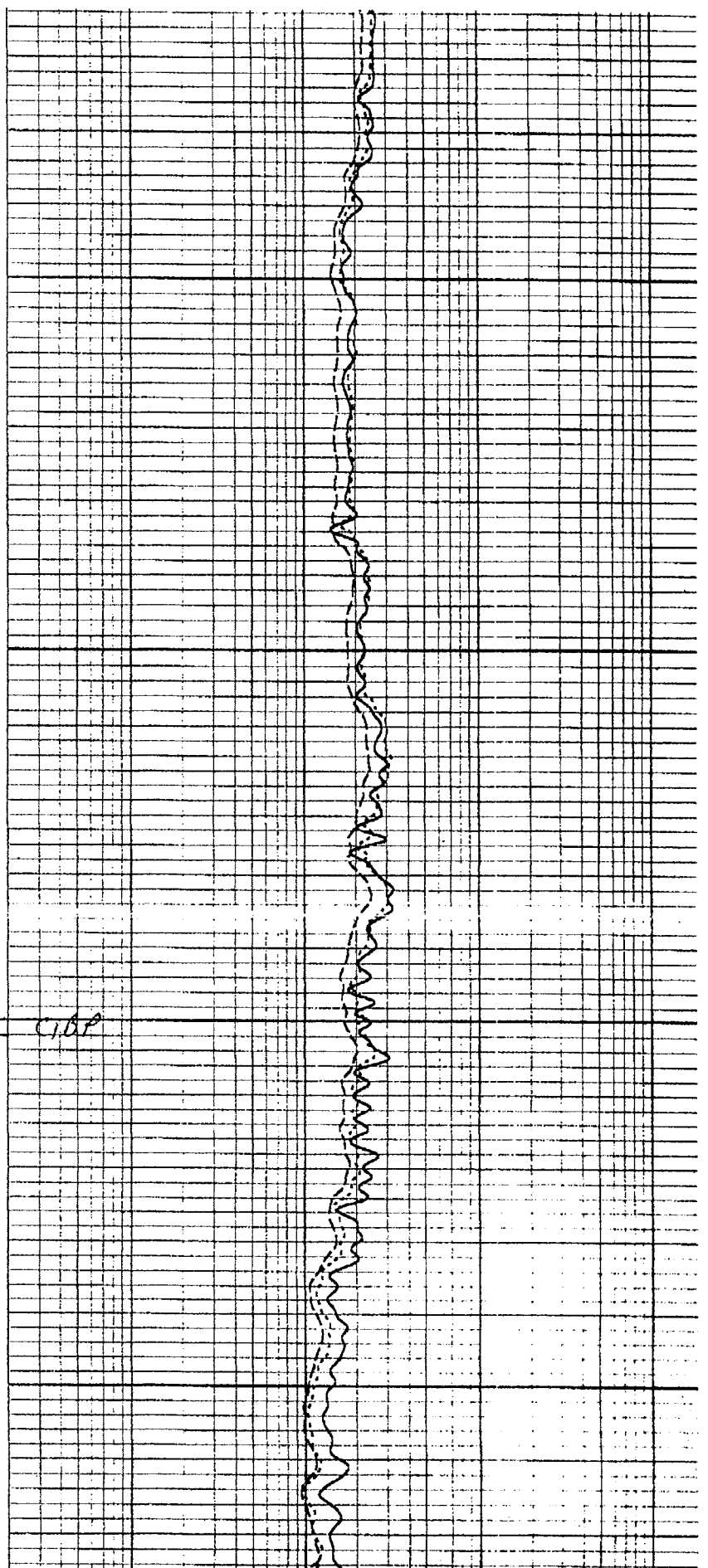
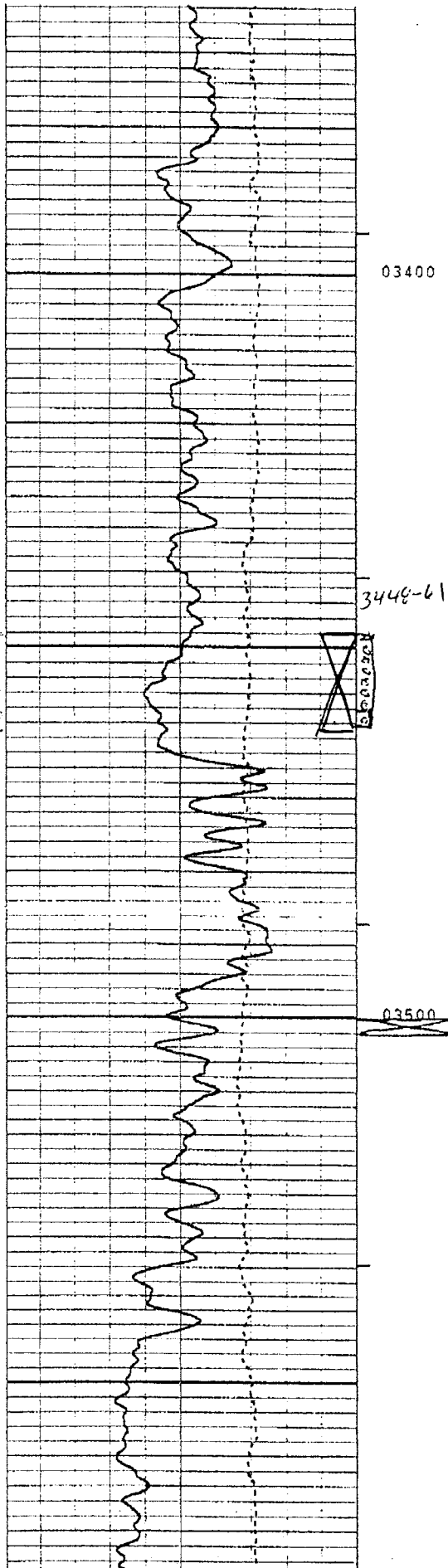
03300

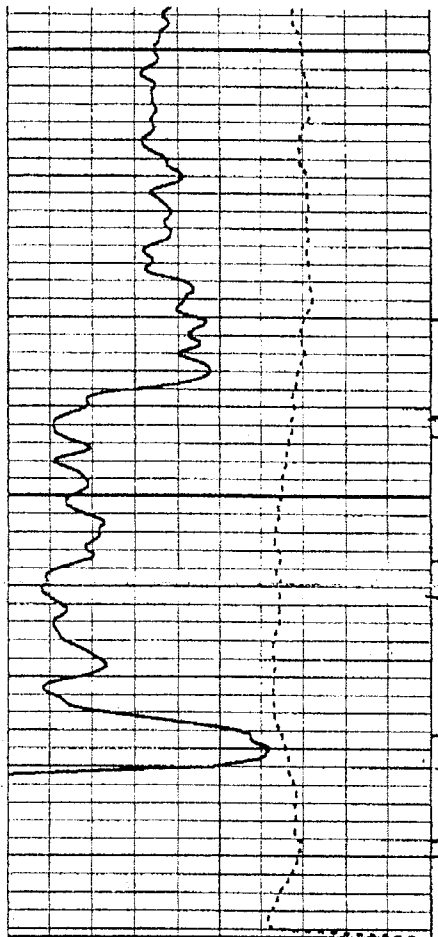
START 6408
3160
+ 3298 Tol felt

3580 stop
3240
+ 380 From time

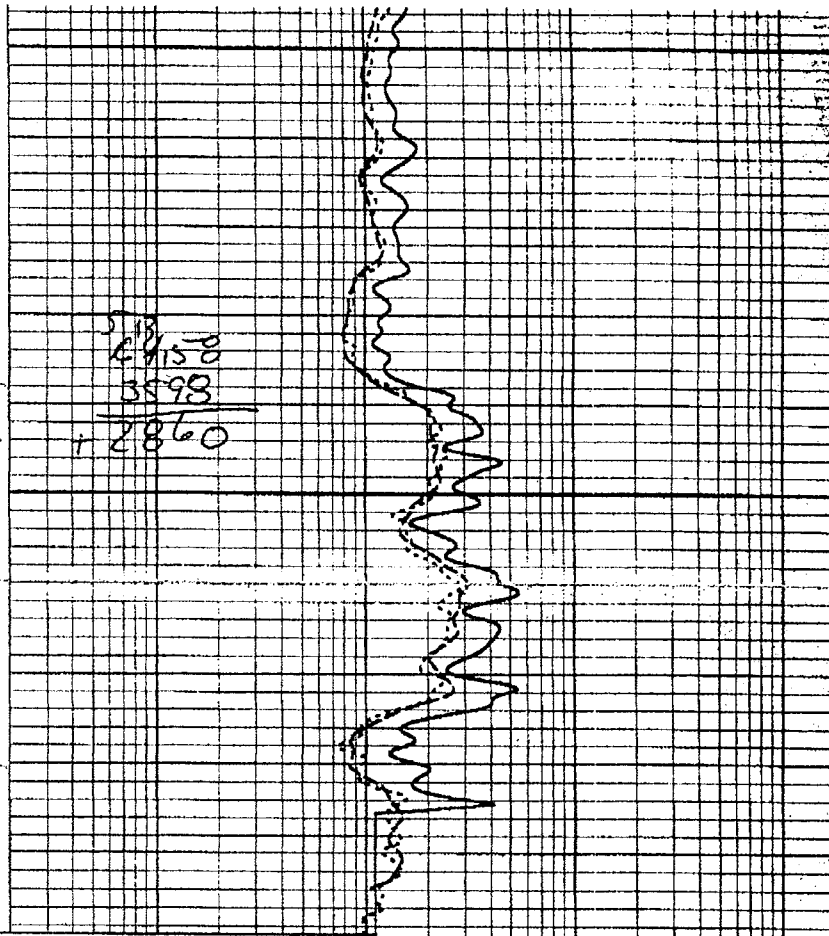








03600



28158
3593
+ 2860

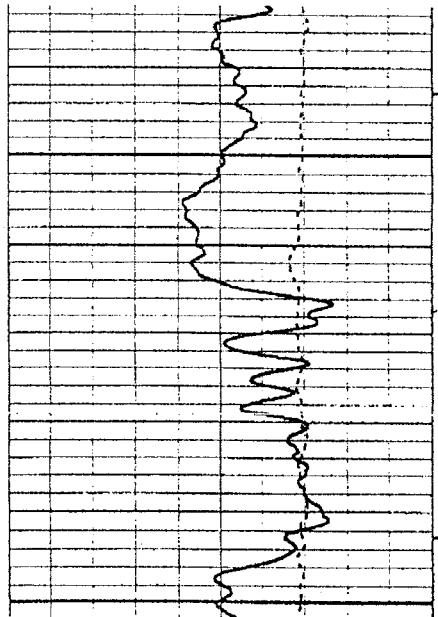
GAMMA RAY - API UNITS
0 ————— 200

SP - 20 MV/DIV
-160 40

MAIN
PASS

.2 1 10 100 1000
SHALLOW FOCUS - RSFL
MEDIUM INDUCTION - RILM
DEEP INDUCTION - RILD

REPEAT
SECTION



03500

