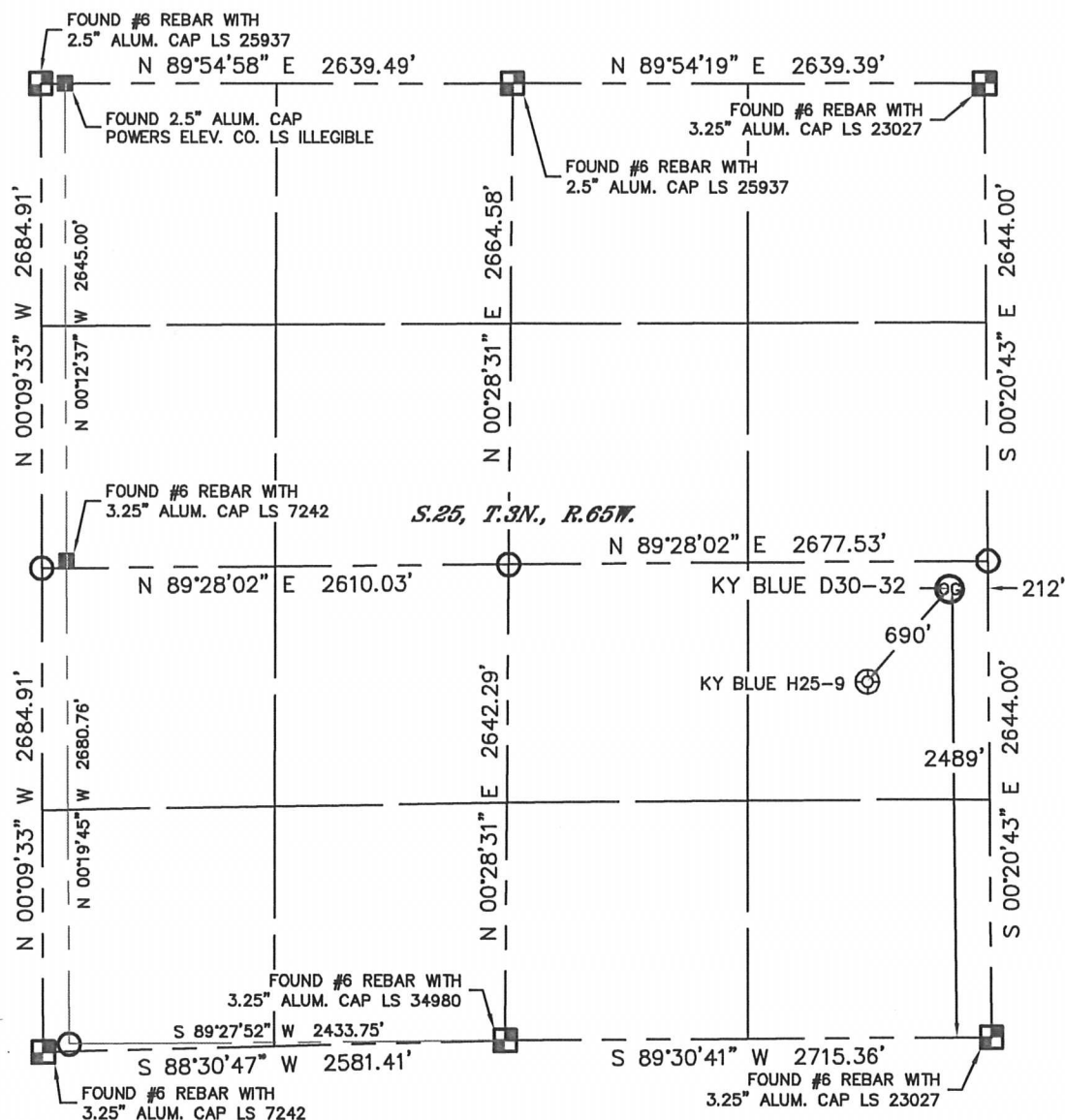


WELL LOCATION CERTIFICATE

THIS MAP DOES NOT REPRESENT A BOUNDARY SURVEY

SECTION: 25
TOWNSHIP: 3N
RANGE: 65W



In accordance with a request from Jacob Rice with Noble Energy Inc.
Lat40°, Inc. has determined the surface location of the KY BLUE D30-32 to be 2489' from the SOUTH line and 212' from the EAST line as measured at right angles from the section lines of Section 25, Township 3 North, Range 65 West of the Sixth Principal Meridian, County of Weld, State of Colorado.

I hereby state that this Well Location Certificate was prepared by me, or under my direct supervision, that the fieldwork was completed on 5-25-11, for and on behalf of Noble Energy Inc. That this is not a Land Survey Plat or an Improvement Survey Plat, and that it is not to be relied upon for establishment of fence, building, or other future Improvement lines.

NOTE:

- 1) Bearings shown are Grid Bearings of the Colorado State Plane Coordinate System, North Zone, North American Datum 1983/2007. The lineal dimensions as contained herein are based upon the "U.S. Survey Foot."
- 2) Ground elevations are based on an observed GPS elevation (NAVD 1988 DATUM).
- 3) NEAREST EXISTING WELL: KY BLUE H25-9 690'
- 4) IMPROVEMENTS: See LOCATION DRAWING for all visible Improvements within 400' of disturbed area.
- 5) SURFACE USE: CROP LAND
- 6) INSTRUMENT OPERATOR: AARON LUND

NOTE

According to Colorado law, you must commence any legal action based upon any defect in this W.L.C. within three years after you discover such defect. In no event, may any action based upon any defect in this survey be commenced more than ten years after the date of the certificate shown hereon. (13-80-105 C.R.S.)

LEGEND

- = ALIQUOT MONUMENT AS DESCRIBED
- = CALCULATED POSITION

SURFACE LOCATION

LATITUDE: 40.19571°N
LONGITUDE: 104.60354°W
PDOP: 2.3
ELEV: 4794'
1/4, 1/4: NE1/4SE1/4
NEAREST PROPERTY LINE: 212' EAST



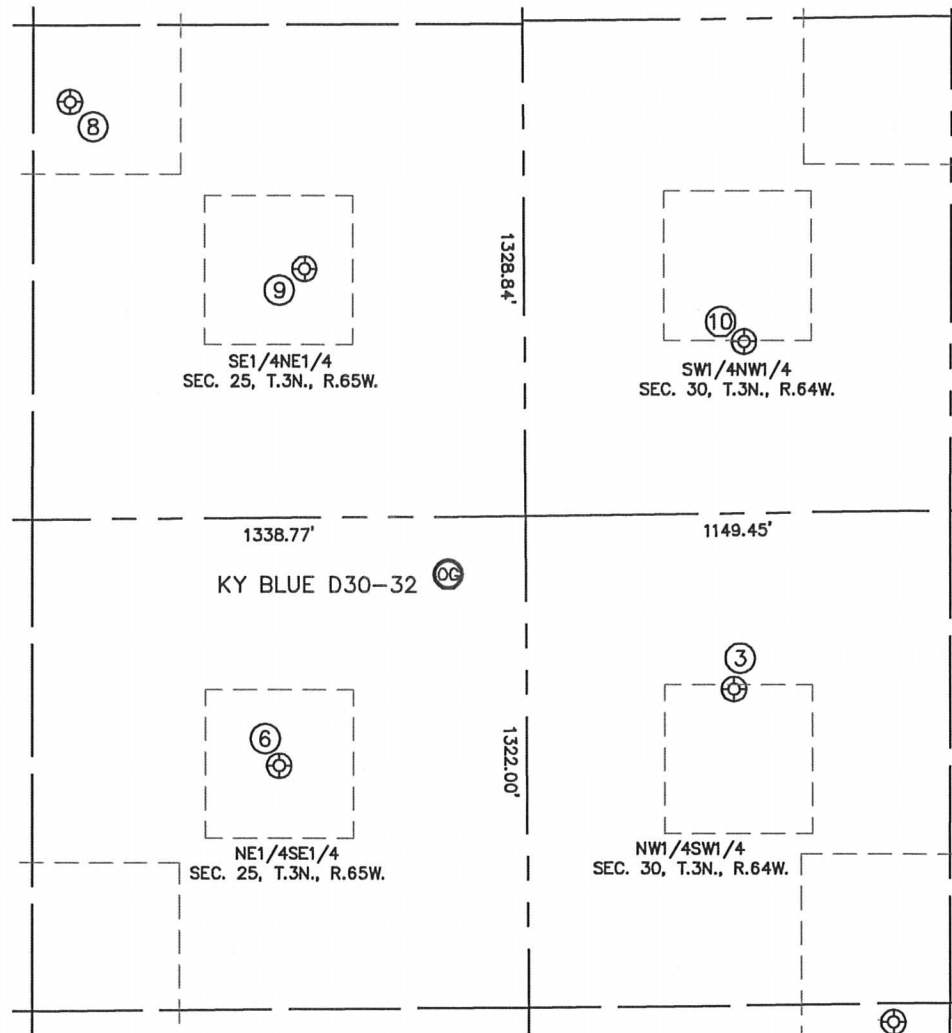
Brian T. Brinkman—On behalf of Lat40°, Inc.
Colorado Licensed Professional
Land Surveyor No. 38175

PROJECT#: 2010143

SITE SKETCH

KY BLUE D30-32

SECTION: 25
TOWNSHIP: 3N
RANGE: 65W



③

HANSON D 30-12
NW1/4SW1/4
2174' FSL
562' FWL
LAT-40.19485°N
LONG-104.60077°W
PDOP: 1.9
ELEV: 4794'

⑥

KY BLUE H 25-9
NE1/4SE1/4
1977' FSL
673' FEL
LAT-40.19431°N
LONG-104.60520°W
PDOP: 0.9
ELEV: 4797'

⑧

UPRR 53 PAN AM UT T 1
SE1/4NE1/4
1533' FNL
1230' FEL
LAT-40.19921°N
LONG-104.60716°W
PDOP: 1.8
ELEV: 4793'

⑨

MOSER 25-42
SE1/4NE1/4
1981' FNL
596' FEL
LAT-40.19797°N
LONG-104.60490°W
PDOP: 2.1
ELEV: 4792'

⑩

HETTINGER D30-5
SW1/4NW1/4
2185' FNL
596' FWL
LAT-40.19741°N
LONG-104.60064°W
PDOP: 1.8
ELEV: 4789'

