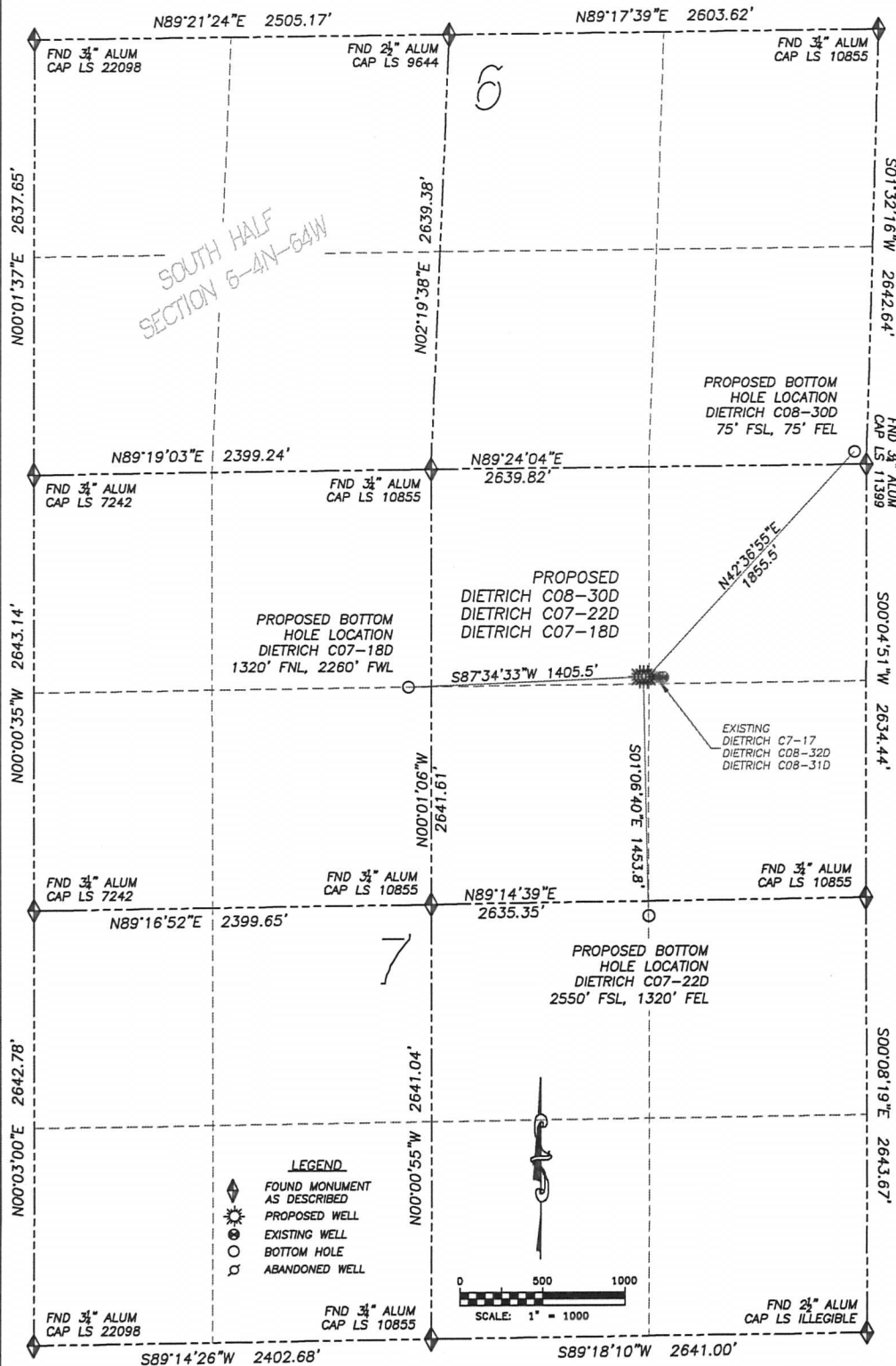


DALEY LAND SURVEYING, INC. PARKER, CO. 80134 303 953 9841

# MULTI-WELL PAD DIRECTIONAL LAYOUT

## DIETRICH C08-30D, DIETRICH C07-22D, DIETRICH C07-18D

SECTION 7, TOWNSHIP 4 NORTH, RANGE 64 WEST OF THE 6TH PRINCIPAL MERIDIAN



### NAD 83 LATITUDE AND LONGITUDE

DIETRICH C08-30D SURFACE HOLE:

LATITUDE: N40.33054°  
LONGITUDE: W104.58874°  
ELEVATION: 4817'  
FOOTAGE: 1277' FNL, 1327' FEL  
PDOP: 2.3  
QTR/QTR: NW4/NE4  
PROP LINE: 9'± EAST  
BOTTOM HOLE:  
LATITUDE: N40.33429°  
LONGITUDE: W104.58423°  
FOOTAGE: 75' FSL, 75' FEL, SEC.6

### NEAREST EXISTING WELL:

DIETRICH 7-17 SURFACE HOLE

LATITUDE: N40.33054°  
LONGITUDE: W104.58857°  
ELEVATION: 4815'  
47' EAST

### NAD 83 LATITUDE AND LONGITUDE

DIETRICH C07-22D SURFACE HOLE:

LATITUDE: N40.33055°  
LONGITUDE: W104.58882°  
ELEVATION: 4817'  
FOOTAGE: 1276' FNL, 1350' FEL  
PDOP: 2.3  
QTR/QTR: NW4/NE4  
PROP LINE: 31'± EAST

BOTTOM HOLE:

LATITUDE: N40.32656°  
LONGITUDE: W104.58872°  
FOOTAGE: 2550' FSL, 1320' FEL

### NEAREST EXISTING WELL:

DIETRICH 7-17 SURFACE HOLE

LATITUDE: N40.33054°  
LONGITUDE: W104.58857°  
ELEVATION: 4815'  
69' EAST

### NAD 83 LATITUDE AND LONGITUDE

DIETRICH C07-18D SURFACE HOLE:

LATITUDE: N40.33055°  
LONGITUDE: W104.58890°  
ELEVATION: 4817'  
FOOTAGE: 1275' FNL, 1372' FEL  
PDOP: 2.2  
QTR/QTR: NW4/NE4  
PROP LINE: 54'± EAST

BOTTOM HOLE:

LATITUDE: N40.33038°  
LONGITUDE: W104.59394°  
FOOTAGE: 1320' FNL, 2260' FWL

### NEAREST EXISTING WELL:

DIETRICH 7-17 SURFACE HOLE

LATITUDE: N40.33054°  
LONGITUDE: W104.58857°  
ELEVATION: 4815'  
92' EAST

DALEY LAND SURVEYING, INC.

PARKER, CO. 80134

303 953 9841

**MULTI-WELL PAD LOCATION DRAWING**  
**DIETRICH C08-30D, DIETRICH C07-22D, DIETRICH C07-18D**  
SECTION 7, TOWNSHIP 4 NORTH, RANGE 64 WEST OF THE 6TH PRINCIPAL MERIDIAN

