

DALEY LAND SURVEYING, INC.

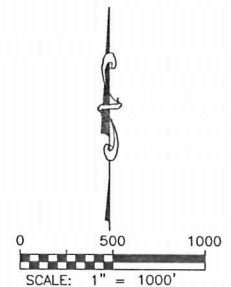
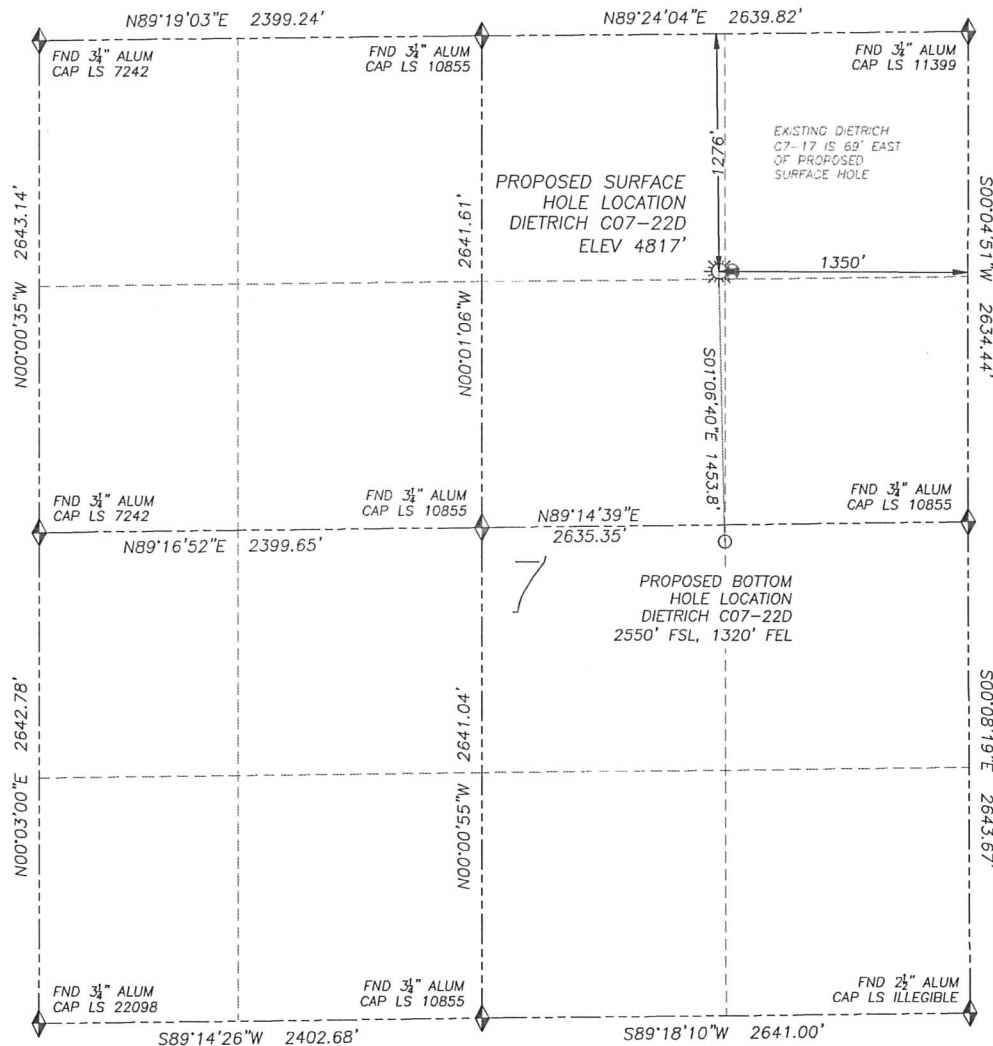
PARKER, CO. 80134

303 953 9841

# WELL LOCATION CERTIFICATE

## DIETRICH C07-22D

SECTION 7, TOWNSHIP 4 NORTH, RANGE 64 WEST OF THE 6TH PRINCIPAL MERIDIAN



### LEGEND

- ◆ FOUND MONUMENT AS DESCRIBED
- ☀ PROPOSED WELL
- ⊙ EXISTING WELL
- BOTTOM HOLE
- ⊘ ABANDONED WELL

### NAD 83 LATITUDE AND LONGITUDE

DIETRICH C07-22D SURFACE HOLE:

LATITUDE: N40.33055°

LONGITUDE: W104.58882°

ELEVATION: 4817'

FOOTAGE: 1276' FNL, 1350' FEL

PDOP: 2.3

QTR/QTR: NW4/NE4

PROP LINE: 31'± EAST

BOTTOM HOLE:

LATITUDE: N40.32656°

LONGITUDE: W104.58872°

FOOTAGE: 2550' FSL, 1320' FEL

NEAREST EXISTING WELL:

DIETRICH 7-17 SURFACE HOLE

LATITUDE: N40.33054°

LONGITUDE: W104.58857°

ELEVATION: 4815'

69' EAST

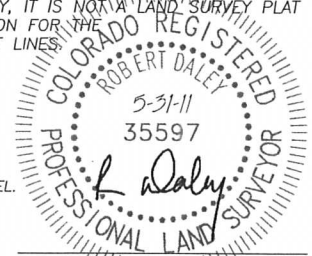
IN ACCORDANCE WITH A REQUEST FROM DANIEL McCOY OF NOBLE ENERGY INC., DALEY LAND SURVEYING, INC. HAS DETERMINED THE SURFACE LOCATION OF THE DIETRICH C07-22D WELL TO BE 1276' FNL, 1350' FEL, AS MEASURED AT NINETY (90) DEGREES FROM THE SECTION LINES OF SECTION 7, TOWNSHIP 4 NORTH, RANGE 64 WEST OF THE 6TH PRINCIPAL MERIDIAN, WELD COUNTY, COLORADO. THE BOTTOM HOLE LOCATION, PROVIDED BY THE CLIENT, IS TO BE 2550' FSL, 1320' FEL.

I HEREBY CERTIFY THAT THIS WELL LOCATION CERTIFICATE WAS PREPARED BY ME OR UNDER MY DIRECT SUPERVISION, THAT THE WORK WAS COMPLETED ON 5/26/2011 FOR AND ON BEHALF OF NOBLE ENERGY, INC., AND THAT THIS MAP DOES NOT REPRESENT A BOUNDARY SURVEY, IT IS NOT A LAND SURVEY PLAT OR AN IMPROVEMENT SURVEY PLAT AND IT IS NOT TO BE RELIED UPON FOR THE ESTABLISHMENT OF FENCE, BUILDING OR OTHER FUTURE IMPROVEMENT LINES.

### NOTES:

- 1) BEARINGS FOR THIS MAP ARE ASSUMED AND BASED UPON GPS OBSERVATIONS MADE BETWEEN MONUMENTS LOCATED AT THE NORTHEAST CORNER AND EAST QUARTER CORNER OF SECTION 7, T.4N., R.64W.
- 2) HORIZONTAL DATUM IS NAD83.
- 3) VERTICAL DATUM IS NAVD88. ELEVATIONS ARE DERIVED FROM GPS OBSERVATIONS PROCESSED THROUGH OPUS, UTILIZING THE GEOID03 MODEL.
- 4) SEE LOCATION DRAWING FOR VISIBLE IMPROVEMENTS WITHIN 600' OF PROPOSED SURFACE HOLE LOCATION.
- 5) SURFACE USE: PASTURE.

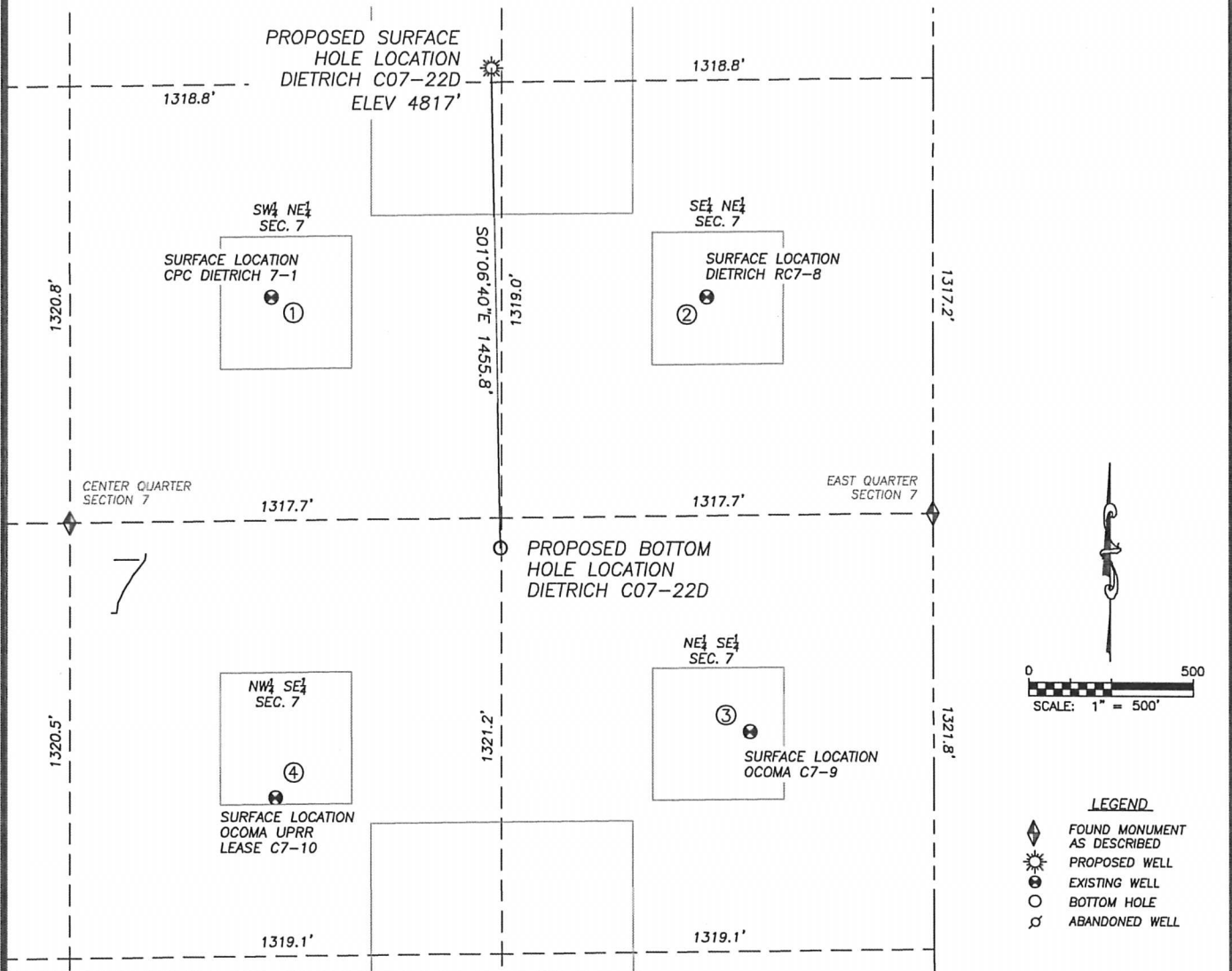
NOTICE: According to Colorado law you MUST commence any legal action based upon any defect in this W.L.C. within three years after you first discover such defect. In no event may any action based upon any such defect in this W.L.C. be commenced more than ten years from the date of the certification shown herein.



FOR AND ON BEHALF OF  
DALEY LAND SURVEYING INC.,  
Robert Daley, PLS 35597

## SITE SKETCH DIETRICH C07-22D

SECTION 7, TOWNSHIP 4 NORTH, RANGE 64 WEST OF THE 6TH PRINCIPAL MERIDIAN



①

CPC DIETRICH 7-1  
SW/NE SEC. 7  
1965' FNL, 2022' FEL  
1033' NW OF PROPOSED  
BOTTOM HOLE LOCATION  
LAT. N40.32864°  
LONG. W104.59124°  
EL: 4835'  
PDOP 2.2

②

DIETRICH RC7-8  
SE/NE SEC. 7  
1974' FNL, 692' FEL  
988' NE OF PROPOSED  
BOTTOM HOLE LOCATION  
LAT. N40.32865°  
LONG. W104.58647°  
EL: 4824'  
PDOP 1.6

③

OCOMA C7-9  
NE/SE SEC. 7  
1987' FSL, 562' FEL  
940' SE OF PROPOSED  
BOTTOM HOLE LOCATION  
LAT. N40.32504°  
LONG. W104.58600°  
EL: 4845'  
PDOP 1.9

④

OCOMA UPRR LEASE C7-10  
NW/SE SEC. 7  
1801' FSL, 2011' FEL  
1024' SW OF PROPOSED  
BOTTOM HOLE LOCATION  
LAT. N40.32448°  
LONG. W104.59119°  
EL: 4858'  
PDOP 1.9

## NOTES:

- 1) THIS DOES NOT REPRESENT A BOUNDARY SURVEY
- 2) THE LATITUDES AND LONGITUDES SHOWN ARE REFERENCED TO NAD83
- 3) DATUM FOR ELEVATION IS NAVD88. ELEVATIONS ARE DERIVED FROM GPS-RTK OBSERVATIONS PROCESSED THROUGH OPUS, UTILIZING THE GEOID03 MODEL.

