

CHEVRON - MID-CONTINENT EBIZ
11111 S WILCREST DR - DO NOT MAIL
HOUSTON, Texas

Emerald 94X

H&P 304 432-238/-4515

Post Job Summary

Cement Surface Casing

Prepared for: Bryce Schroeder
Date Prepared: June 23, 2011
Version: 1

Service Supervisor: ANDERSON, BENJAMIN

Submitted by: Joshua Anglin

HALLIBURTON

Wellbore Geometry

Job Tubulars					MD		TVD		Excess	Shoe Joint Length
Type	Description	Size in	ID in	Wt lbm/ft	Top ft	Bottom ft	Top ft	Bottom ft	%	ft
Casing	Conductor Casing	16.00	15.010	84.00	0.00	60.00				
Open Hole Section	12-1/4" Hole		12.250		60.00	2,000.00				
Casing	Surface Casing	9.63	8.921	36.00	0.00	2,000.00				40.00

Pumping Schedule

Stage /Plug #	Fluid #	Fluid Type	Fluid Name	Surface Density lbm/gal	Avg Rate bbl/min	Surface Volume	Downhole Volume
1	1	Spacer	Gel Water	8.50	0.00	20.0 bbl	20.0 bbl
1	2	Cement Slurry	Tuned Light Lead	11.00		330.0 sacks	330.0 sacks
1	3	Cement Slurry	Tuned Light Tail	12.00		165.0 sacks	165.0 sacks
1	4	Spacer	Displacement	8.34	0.00	148.0 bbl	148.0 bbl
1	5	Cement Slurry	Top Out Cement	15.80		400.0 sacks	400.0 sacks

HALLIBURTON

Fluids Pumped

Stage/Plug # 1 Fluid 1: Gel Water
DUMMY MUD / FLUSH / SPACER SBC MATERIAL
10 lbm/bbl Halliburton Gel

Fluid Density: 8.50 lbm/gal
Fluid Volume: 20.00 bbl
Pump Rate: 0.00 bbl/min

Stage/Plug # 1 Fluid 2: Tuned Light Lead
TUNED LIGHT (TM) SYSTEM
0.125 lbm Poly-E-Flake

Fluid Weight: 11.00 lbm/gal
Slurry Yield: 2.88 ft³/sack
Total Mixing Fluid: 15.68 Gal
Surface Volume: 330.0 sacks
Sacks: 330.0 sacks
Calculated Fill: 1,500.00 ft
Calculated Top of Fluid: 0.00 ft
Estimated Top of Fluid:

Stage/Plug # 1 Fluid 3: Tuned Light Tail
TUNED LIGHT (TM) SYSTEM
0.125 lbm Poly-E-Flake

Fluid Weight: 12.00 lbm/gal
Slurry Yield: 2.03 ft³/sack
Total Mixing Fluid: 9.48 Gal
Surface Volume: 165.0 sacks
Sacks: 165.0 sacks
Calculated Fill: 500.00 ft
Calculated Top of Fluid: 1,500.00 ft
Estimated Top of Fluid:

Stage/Plug # 1 Fluid 4: Displacement
DUMMY MUD / FLUSH / SPACER SBC MATERIAL

Fluid Density: 8.34 lbm/gal
Fluid Volume: 148.00 bbl
Pump Rate: 0.00 bbl/min

Stage/Plug # 1 Fluid 5: Top Out Cement
Top Out Cement
94 lbm Premium Cement
2 % Calcium Chloride, Pellet

Fluid Weight: 15.80 lbm/gal
Slurry Yield: 1.17 ft³/sack
Total Mixing Fluid: 5.02 Gal
Surface Volume: 400.0 sacks
Sacks: 400.0 sacks
Estimated Top of Fluid:

HALLIBURTON

Job Summary

Job Information

Job Start Date	6/3/2011 9:30:00 AM
Job MD	2,025.0 ft
Job TVD	2,025.0 ft
Height of Plug Container/Swage Above Rig Floor	3.0 ft
Surface Temperature at Time of Job	79 degF
Actual Mud Density	9 lbm/gal
Mud loss during Cement Job	397.00 bbl
Pipe Movement During Cementing	None
Calculated Displacement	148.00 bbl
Amount of Cement Returns	4.00 bbl
Job Displaced by (rig/halco)	Cement Unit HP Pumps
Annular flow Before Job? (Water/Gas)	No
Annular flow After Job? (Water/Gas)	Unknown
Length of Rat Hole	23.00 ft

Cementing Equipment

Did Float Equipment Hold?	No
Plug set used?	Yes
Brand of Plug set used?	HALLIBURTON
Did Plugs Bump?	Yes
Calculated Pressure to Bump Plugs	278.0 psig
Did Stage Cementing Tool Open Properly?	Unknown

Service Supervisor Reports

Job Log

Date/Time	Chart #	Activity Code	Pump Rate	Cum Vol	Pump		Pressure (psig)		Comments
06/03/2011 03:00		Call Out							CREW CALLED OUT, GOT TRUCKS PREPPED FOR CONVOY AND JOB
06/03/2011 05:15		Pre-Convoy Safety Meeting							DISCUSSED CONVOY PROCEDURES, ROUTE, STOPS, WILDLIFE, TRAFFIC, ROAD HAZARDS, EMERGENCY, AND BREAKDOWN PROCEDURES
06/03/2011 06:30		Arrive at Location from Service Center							RIG IS ON BOTTOM WITH CASING
06/03/2011 06:35		Pre-Rig Up Safety Meeting							DISCUSSED RIG UP PROCEDURES, RED ZONES, LIFTING, HAMMERING, PINCH POINTS, AND SLIPS/TRIPS/FALLS
06/03/2011 06:45		Rig-Up Equipment							RIGGED UP SAFELY AND TO BOTH HALLIBURTON AND CHEVRON STANDARDS
06/03/2011 09:30		Pre-Job Safety Meeting							DISCUSSED JOB PROCEDURES, RIG ISSUES, SAFETY ISSUES, HAZARDS WITH PRESSURE, EMERGENCY, AND EVACUATION PROCEDURES
06/03/2011 09:49		Test Lines						3000.0	PRESSURE TEST IS GOOD
06/03/2011 09:52		Pump Spacer	2.3					81.0	PUMPED GELLED WATER @ 8.4 PPG
06/03/2011 09:58		Pump Lead Cement	4.2					106.0	MIXED @ 11 PPG, 330 SKS, YLD 2.88, WTR 15.68 WITH
06/03/2011 10:40		Pump Tail Cement	4.2					98.0	MIXED @ 12 PPG, 165 SKS, YLD 2.03, WTR 9.48 WITH

HALLIBURTON

Date/Time	Chart #	Activity Code	Pump Rate	Cum Vol	Pump		Pressure (psig)	Comments
06/03/2011 10:57		Drop Top Plug						PLUG LEFT THE CEMENT HEAD
06/03/2011 10:58		Pump Displacement	3.5				264.0	PUMPED WATER BASED MUD @ 8.5 PPG
06/03/2011 11:43		Bump Plug	2				949.0	BUMPED @ 315 PSI AND TOOK PRESSURE 500 PSI OVER AS PER COMPANY MAN
06/03/2011 11:45		Check Floats						FLOATS DID NOT HOLD, GOT 1 BBLS BACK
06/03/2011 11:48		Pressure Up Well						PRESSURED BACK UP TO CHECK THE FLOATS AGAIN
06/03/2011 11:49		Check Floats						CHECKED FLOATS AGAIN, THEY STILL DID NOT HOLD, STILL GOT 1 BBLS BACK
06/03/2011 11:52		Pressure Up Well						PRESSURED UP AGAIN AND CLOSED OFF AT THE CEMENT HEAD
06/03/2011 12:00		Other						WAITING FOR CEMENT TO SET UP BEFORE STARTING TOP OUT
06/03/2011 15:40		Pre-Job Safety Meeting						DISCUSSED JOB PROCEDURES FOR TOPOUT JOB, RIG ISSUES, SAFETY ISSUES, HAZARDS WITH PRESSURE, EMERGENCY, AND EVACUATION PROCEDURES
06/03/2011 15:45		Pump Cement	1.6				206.0	MIXED @ 15.8 PPG, 75 SKS, YLD 1.17, WTR 5.02, WITH 2% CALCIUM CHLORIDE ADDITIVES
06/03/2011 15:59		Shutdown						SHUTDOWN / WAITING FOR 2 HOURS FOR CEMENT TO SET
06/03/2011 18:00		Pre-Job Safety Meeting						DISCUSSED JOB PROCEDURES FOR TOPOUT JOB, RIG ISSUES, SAFETY ISSUES, HAZARDS WITH PRESSURE, EMERGENCY, AND EVACUATION PROCEDURES

HALLIBURTON

Date/Time	Chart #	Activity Code	Pump Rate	Cum Vol	Pump		Pressure (psig)		Comments
06/03/2011 18:07		Pump Cement	1.5					160.0	MIXED @ 15.8 PPG, 75 SKS, YLD 1.17, WTR 5.02, WITH 2% CALCIUM CHLORIDE ADDITIVES
06/03/2011 18:22		Shutdown							SHUTDOWN / WAITING FOR 2 HOURS FOR CEMENT TO SET
06/03/2011 20:45		Pre-Job Safety Meeting							DISCUSSED JOB PROCEDURES FOR TOPOUT JOB, RIG ISSUES, SAFETY ISSUES, HAZARDS WITH PRESSURE, EMERGENCY, AND EVACUATION PROCEDURES
06/03/2011 20:58		Pump Cement	2					118.0	MIXED @ 15.8 PPG, 150 SKS, YLD 1.17, WTR 5.02, WITH 2% CALCIUM CHLORIDE ADDITIVES
06/03/2011 21:29		Shutdown							SHUTDOWN / WAITING FOR 2 HOURS FOR CEMENT TO SET
06/03/2011 23:30		Pre-Job Safety Meeting							DISCUSSED JOB PROCEDURES FOR TOPOUT JOB, RIG ISSUES, SAFETY ISSUES, HAZARDS WITH PRESSURE, EMERGENCY, AND EVACUATION PROCEDURES
06/03/2011 23:48		Pump Cement	1.2					328.0	MIXED @ 15.8 PPG, 100 SKS, YLD 1.17, WTR 5.02, WITH 2% CALCIUM CHLORIDE ADDITIVES
06/04/2011 00:04		Shutdown							SHUTDOWN / WAITING FOR 2 HOURS FOR CEMENT TO SET
06/04/2011 02:30		Other							CHECKED LEVEL OF CEMENT @ SURFACE, CEMENT HAS NOT FALLEN

HALLIBURTON

Date/Time	Chart #	Activity Code	Pump Rate	Cum Vol	Pump		Pressure (psig)		Comments
06/04/2011 02:45		Post-Job Safety Meeting (Pre Rig-Down)							DISCUSSED JOB OUTCOME AND DISCUSSED RIG DOWN PROCEDURES, RED ZONES, LIFTING, HAMMERING, PINCH POINTS, AND SLIPS/TRIPS/FALLS
06/04/2011 03:00		Rig-Down Equipment							RIGGED DOWN SAFELY AND TO BOTH HALLIBURTON AND CHEVRON STANDARDS
06/04/2011 04:20		Pre-Convoy Safety Meeting							DISCUSSED CONVOY PROCEDURES, ROUTE, STOPS, WILDLIFE, TRAFFIC, ROAD HAZARDS, EMERGENCY, AND BREAKDOWN PROCEDURES
06/04/2011 04:30		Depart Location for Service Center or Other Site							THANKS FOR USING HALLIBURTON!!!

The Road to Excellence Starts with Safety

Sold To #: 338668	Ship To #: 2857522	Quote #:	Sales Order #: 8211704
Customer: CHEVRON - MID-CONTINENT EBIZ		Customer Rep:	
Well Name: Emerald		Well #: 94X	API/UWI #:
Field:	City (SAP): RANGELY	County/Parish: Uintah	State: Utah
Contractor: H&P		Rig/Platform Name/Num: 304 432-238-4515	
Job Purpose: Cement Surface Casing			
Well Type: Development Well		Job Type: Cement Surface Casing	
Sales Person: SCHROEDER, BRYCE		Srv Supervisor: ANDERSON, BENJAMIN	MBU ID Emp #: 342843

Job Personnel

HES Emp Name	Exp Hrs	Emp #	HES Emp Name	Exp Hrs	Emp #	HES Emp Name	Exp Hrs	Emp #
ALLRED, JARED Don		471751	ANDERSON, BENJAMIN L		342843	GOODRICH, BENJAMIN Franklin		481342
WILKISON, KEVIN Diverne		491065						

Equipment

HES Unit #	Distance-1 way	HES Unit #	Distance-1 way	HES Unit #	Distance-1 way	HES Unit #	Distance-1 way
10948690	mile	10994445	mile	10994447	mile	11062230	mile
11076824	mile	11398321	mile	11410666	mile		

Job Hours

Date	On Location Hours	Operating Hours	Date	On Location Hours	Operating Hours	Date	On Location Hours	Operating Hours
TOTAL	Total is the sum of each column separately							

Job

Job Times

Formation Name					Date	Time	Time Zone
Formation Depth (MD)	Top		Bottom		Called Out	03 - Jun - 2011	03:00 MST
Form Type	BHST				On Location	03 - Jun - 2011	06:30 MST
Job depth MD	2025. ft	Job Depth TVD	2025. ft	Job Started	03 - Jun - 2011	09:30	MST
Water Depth		Wk Ht Above Floor	3. ft	Job Completed	04 - Jun - 2011	02:30	MST
Perforation Depth (MD)	From		To	Departed Loc	03 - Jun - 2011	04:30	MST

Well Data

Description	New / Used	Max pressure psig	Size in	ID in	Weight lbm/ft	Thread	Grade	Top MD ft	Bottom MD ft	Top TVD ft	Bottom TVD ft
12-1/4" Hole				12.25				60.	2000.		
Conductor Casing	Unknown		16.	15.01	84.			.	60.		
Surface Casing	New		9.625	8.921	36.		H-40	.	2000.		

Sales/Rental/3rd Party (HES)

Description	Qty	Qty uom	Depth	Supplier
PLUG,CMTG,TOP,9 5/8,HWE,8.16 MIN/9.06 MA	1	EA		
SUGAR - GRANULATED	20	LB		

Tools and Accessories

Type	Size	Qty	Make	Depth	Type	Size	Qty	Make	Depth	Type	Size	Qty	Make
Guide Shoe					Packer					Top Plug			
Float Shoe					Bridge Plug					Bottom Plug			
Float Collar					Retainer					SSR plug set			

Insert Float										Plug Container				
Stage Tool										Centralizers				
Miscellaneous Materials														
Gelling Agt		Conc		Surfactant		Conc		Acid Type		Qty		Conc	%	
Treatment Fld		Conc		Inhibitor		Conc		Sand Type		Size		Qty		
Fluid Data														
Stage/Plug #: 1														
Fluid #	Stage Type	Fluid Name			Qty	Qty uom	Mixing Density lbm/gal	Yield ft3/sk	Mix Fluid Gal/sk	Rate bbl/min	Total Mix Fluid Gal/sk			
1	Gel Water				20.00	bbl	8.5	.0	.0	.0				
	10 lbm/bbl	HALLIBURTON GEL, 50 LB SK (100064040)												
2	Tuned Light Lead	TUNED LIGHT (TM) SYSTEM (452984)			330.0	sacks	11.	2.88	15.68		15.68			
	0.125 lbm	POLY-E-FLAKE (101216940)												
	15.68 Gal	FRESH WATER												
3	Tuned Light Tail	TUNED LIGHT (TM) SYSTEM (452984)			165.0	sacks	12.	2.03	9.48		9.48			
	0.125 lbm	POLY-E-FLAKE (101216940)												
	9.48 Gal	FRESH WATER												
4	Displacement				148.00	bbl	8.34	.0	.0	.0				
5	Top Out Cement	CMT - PREMIUM - CLASS G, 94 LB SK (100003685)			400.0	sacks	15.8	1.17	5.02		5.02			
	94 lbm	CMT - PREMIUM - CLASS G REG OR TYPE V, BULK (100003685)												
	2 %	CALCIUM CHLORIDE, PELLET, 50 LB (101509387)												
	5.019 Gal	FRESH WATER												
Calculated Values		Pressures			Volumes									
Displacement		Shut In: Instant			Lost Returns		Cement Slurry		Pad					
Top Of Cement		5 Min			Cement Returns		Actual Displacement		Treatment					
Frac Gradient		15 Min			Spacers		Load and Breakdown		Total Job					
Rates														
Circulating		Mixing		Displacement		Avg. Job								
Cement Left In Pipe		Amount	40 ft	Reason	Shoe Joint									
Frac Ring # 1 @	ID	Frac ring # 2 @	ID	Frac Ring # 3 @	ID	Frac Ring # 4 @	ID							
The Information Stated Herein Is Correct					Customer Representative Signature									

Lab Data

HALLIBURTON

Cementing Rockies, Vernal

LAB RESULTS - Lead

Job Information

Request/Slurry	153661/1	Rig Name	H&P 304	Date	07/JUN/2011
Submitted By	Isaac Whorl	Job Type	Production Casing	Bulk Plant	Vernal
Customer	Chevron	Location	Rio Blanco	Well	Emerald 94X

Well Information

Casing/Liner Size	7"	Depth MD	6286 ft	BHST	155 F
Hole Size	8 3/4"	Depth TVD	0 ft	BHCT	109 F

Drilling Fluid Information

Mud Company	Type	Density	PV/YP
-------------	------	---------	-------

Cement Information - Lead Design

Conc	UOM	Cement/Additive	Sample Type	Sample Date	Lot No.	Cement Properties		
9.48	gal/sack	Tuned Light	Lab	May 29, 2011	5-29-2011	Slurry Density	11.00	PPG
						Slurry Yield	2.2	ft/sk
		Fresh Water				Water Requirement	9.48	GPS

Water Source	Fresh Water
Water Chloride	N/A ppm

Operation Test Results Request ID 153661/1

UCA Comp. Strength, Request Test ID:1542220, Historical Data

End Temp (°F)	Pressure (psi)	50 psi (hh:mm)	500 psi (hh:mm)	12 hr CS (psi)	24 hr CS (psi)	End CS (psi)	End Time (hrs)	Crush CS (psi)
155	3,000	02:10	05:07	943	1,188	1,188	24	4,272

Thickening Time, Request Test ID:1542219, Historical Data

Temp (°F)	Pressure (psi)	Reached in (min)	Start BC	30 Bc (hh:mm)	50 Bc (hh:mm)	70 Bc (hh:mm)	100 Bc (hh:mm)
109	3,700	34	18	02:30	03:37	05:36	05:53

Marsh Funnel, Request Test ID:1542224, Historical Data

Volume [ml]	Time [Sec]	Foam Quality
69	60	0

Free Water, Request Test ID:1542222, Historical Data

Test Temp (°F)	% FW 45 Inc
109	0

HALLIBURTON HALLIBURTON

Cementing Rockies, Vernal

LAB RESULTS - Tail

Job Information

Request/Slurry	153660/1	Rig Name	H&P 304	Date	07/JUN/2011
Submitted By	Isaac Whorl	Job Type	Production Casing	Bulk Plant	Vernal
Customer	Chevron	Location	Rio Blanco	Well	Emerald 94X

Well Information

Casing/Liner Size	7"	Depth MD	6286 ft	BHST	155 F
Hole Size	8 3/4"	Depth TVD	0 ft	BHCT	109 F

Drilling Fluid Information

Mud Company	Type	Density	PV/YP
-------------	------	---------	-------

Cement Information - Tail Design

<u>Conc</u>	<u>UOM</u>	<u>Cement/Additive</u>	<u>Sample Type</u>	<u>Sample Date</u>	<u>Lot No.</u>	<u>Cement Properties</u>		
5.93	gal/sack	Tuned Light				Slurry Density	11.70	PPG
		Fresh Water				Slurry Yield	1.72	ft3/sk
						Water Requirement	5.93	GPS
							Water Source	Fresh Water
						Water Chloride	N/A	ppm

Operation Test Results Request ID 153660/1

UCA Comp. Strength, Request Test ID:1542246, Historical Data

End Temp (°F)	Pressure (psi)	50 psi (hh:mm)	500 psi (hh:mm)	12 hr CS (psi)	24 hr CS (psi)	Crush CS (psi)
155	3,000	03:43	04:53	2,289	3,281	3,052

Thickening Time, Request Test ID:1542217, Historical Data

Temp (°F)	Pressure (psi)	Reached in (min)	Start BC	30 Bc (hh:mm)	50 Bc (hh:mm)	70 Bc (hh:mm)	100 Bc (hh:mm)
109	3,700	34	27	01:50	02:40	02:51	03:00

Marsh Funnel, Request Test ID:1542245, Historical Data

Volume [ml]	Time [Sec]	Foam Quality
250	36	0

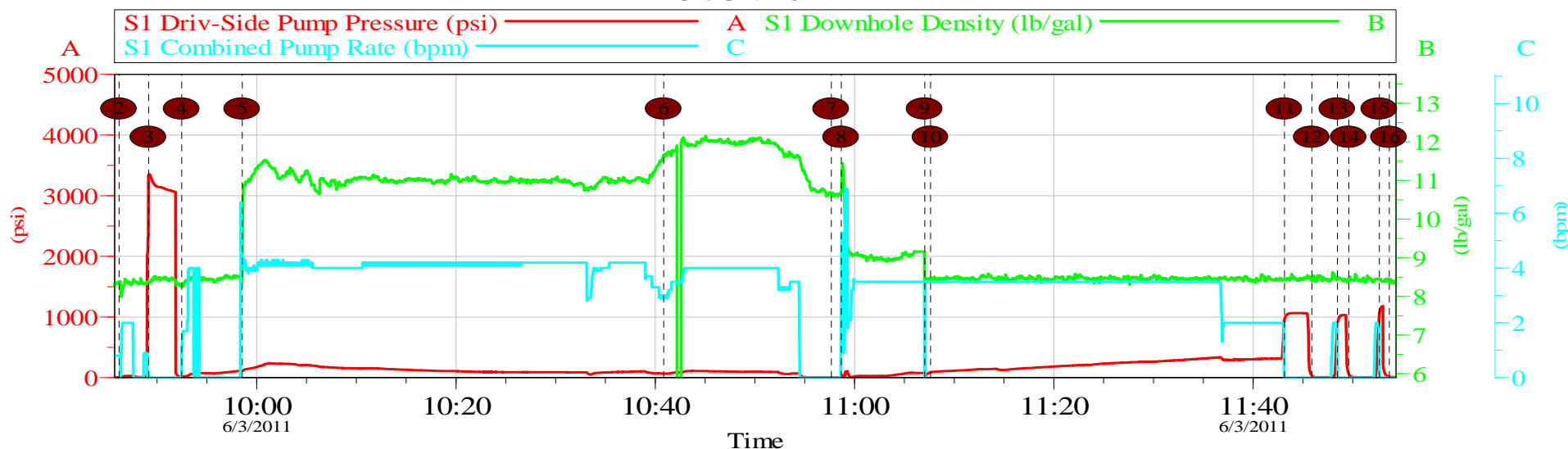
Free Water, Request Test ID:1542244, Historical Data

Test Temp (°F)	% FW Vert	Conditioning time
109	0	20

HALLIBURTON

Data Acquisition

CHEVRON - EMERALD WELL 94X - 9.625 SURFACE 3-JUN-2011

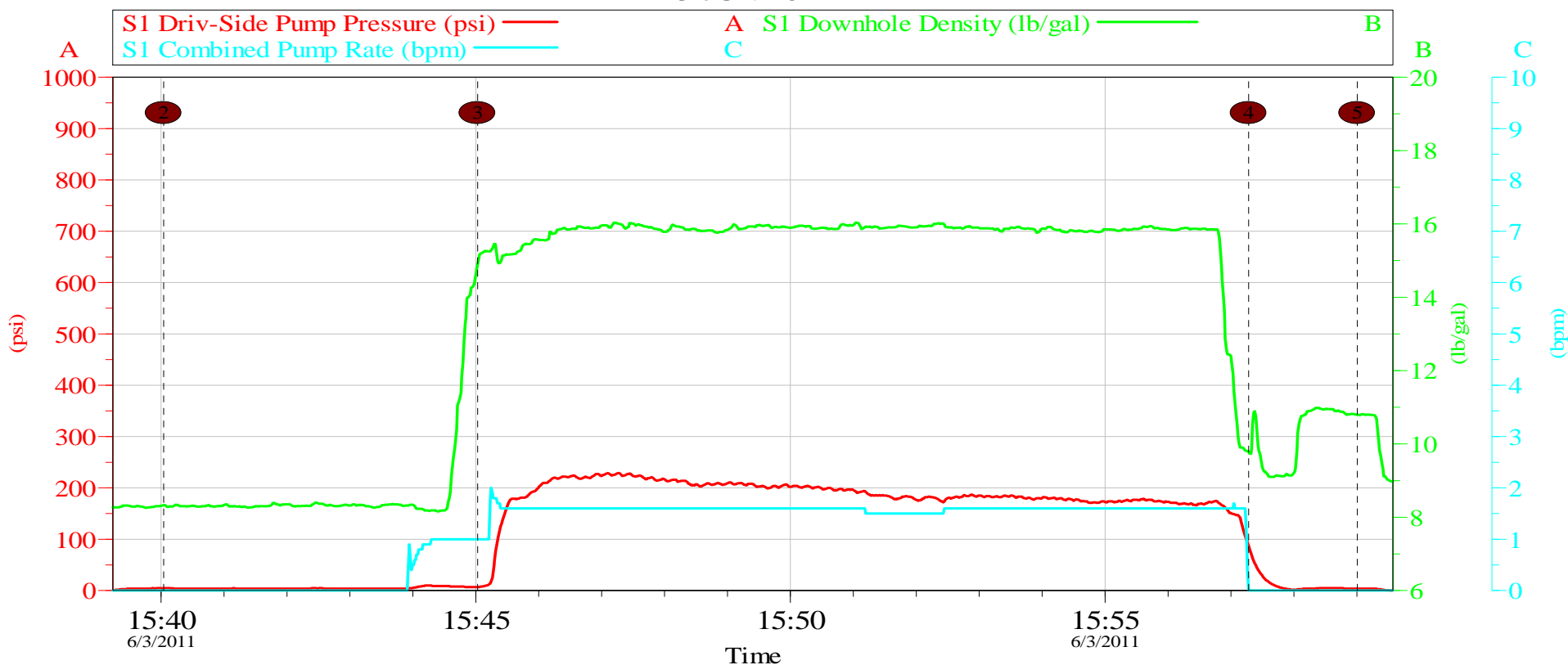


Global Event Log					
Intersection		SDPP	Intersection		SDPP
2	Start Job	09:46:11 3.000	3	Test Lines	09:49:09 3342
4	Pump Gel Spacer	09:52:29 12.00	5	Pump Lead Cement	09:58:33 114.0
6	Pump Tail Cement	10:40:51 63.00	7	Drop Top Plug	10:57:40 5.000
8	Pump Displacement	10:58:40 7.575	9	Start Job	11:07:03 4.013
10	Start Job	11:07:38 87.00	11	Bump Plug	11:43:08 949.0
12	Checked Floats	11:45:54 32.66	13	Pressure Up Well	11:48:28 868.1
14	Checked Floats Again	11:49:37 57.93	15	Pressured Up / Closed Off At The Cement Head	11:52:40 1061
16	End Job For Primary Job	11:53:39 15.00			

Customer: CHEVRON	Job Date: 03-Jun-2011	Sales Order #: 8211704
Well Description: EMERALD	WELL 94X	PUMP TRK 11076824
SVC SPR STARBUCKS	SVC OPR JARED ALLRED	

HALLIBURTON
OptiCem v6.2.3
03-Jun-11 12:28

CHEVRON - EMERALD WELL 94X - 1ST TOPOUT 3-JUN-2011

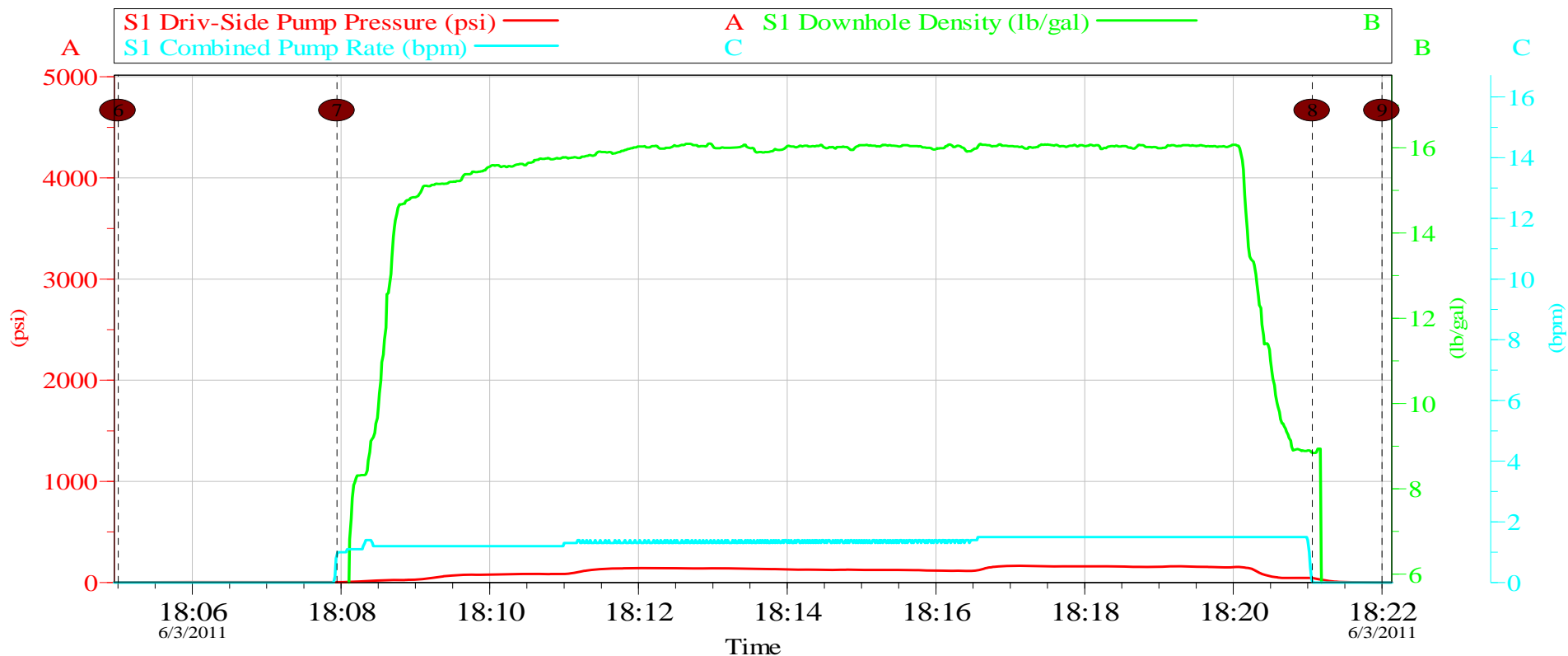


Intersection		Global Event Log		Intersection	
		SDPP			SDPP
2	Start Job	15:40:03	5.000	3	Pump Cement
4	Shutdown / Waiting 2 Hours For Cement To Set	15:57:17	87.26	5	End Job For 1st Topout
					15:45:02
					15:59:00

Customer: CHEVRON	Job Date: 03-Jun-2011	Sales Order #: 8211704
Well Description: EMERALD	WELL 94X	PUMP TRK 11076824
SVC SPR STARBUCKS	SVC OPR JARED ALLRED	

HALLIBURTON
OptiCem v6.2.3
03-Jun-11 18:48

CHEVRON - EMERALD WELL 94X - 2ND TOPOUT 3-JUN-2011

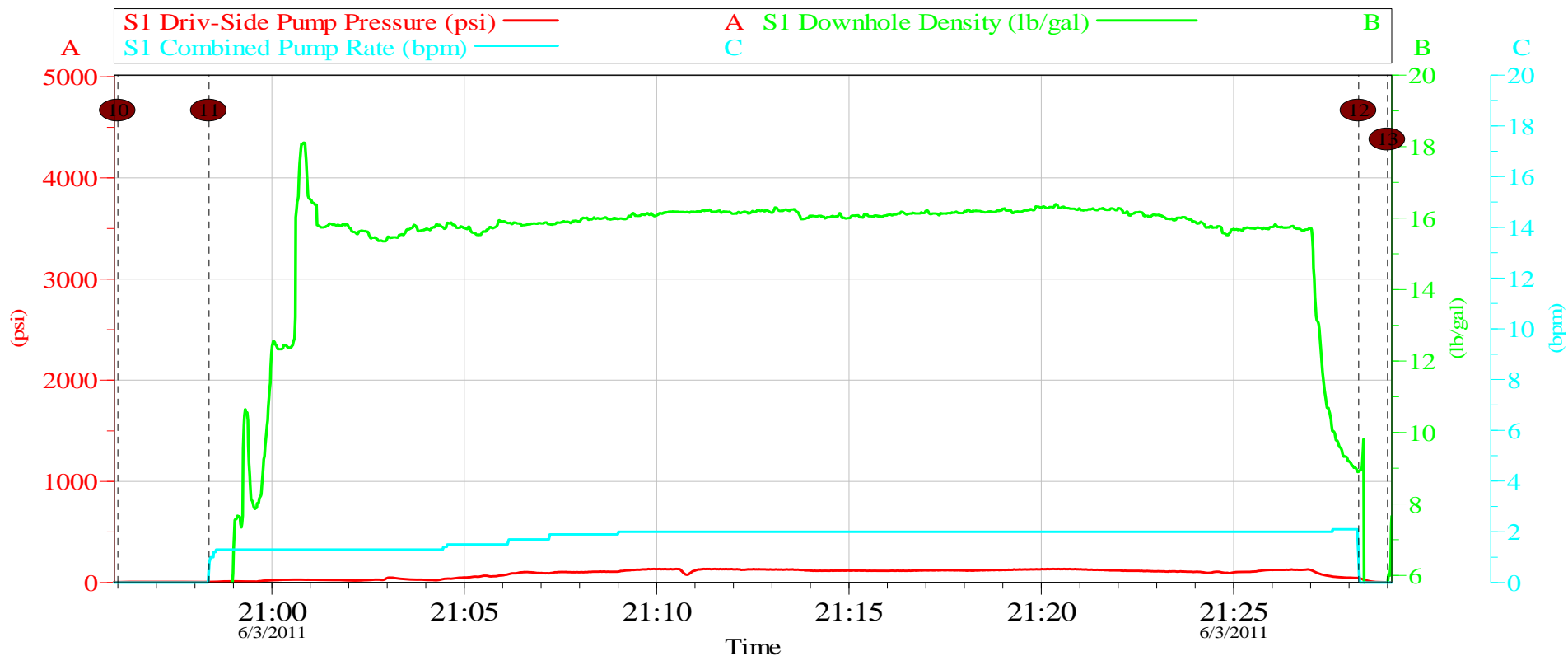


Global Event Log					
Intersection		SDPP	Intersection		SDPP
6	Start Job	18:05:00 3.000	7	Pump Cement	18:07:57 4.000
8	Shutdown	18:21:04 45.49	9	End Job For 2nd Topout	18:22:00 2.000

Customer: CHEVRON	Job Date: 03-Jun-2011	Sales Order #: 8211704
Well Description: EMERALD	WELL 94X	PUMP TRK 11076824
SVC SPR STARBUCKS	SVC OPR JARED ALLRED	

HALLIBURTON
OptiCem v6.2.3
03-Jun-11 18:51

CHEVRON - EMERALD WELL 94X - 3RD TOPOUT 3-JUN-2011

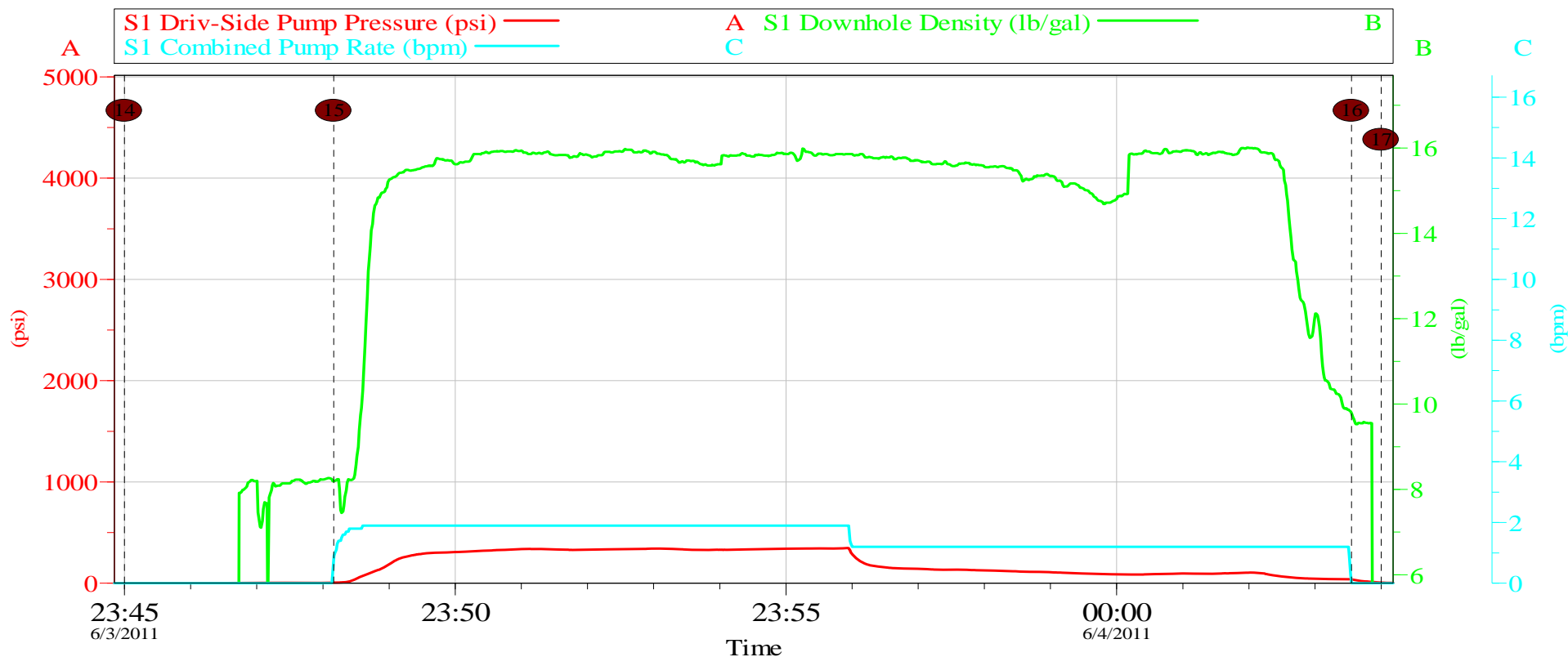


Global Event Log					
Intersection		SDPP	Intersection		SDPP
10	Start Job	20:56:00 5.000	11	Pump Cement	20:58:22 6.000
12	Shutdown / Waiting another 2 hours	21:28:15 45.00	13	End Job For 3rd Topout	21:29:00 3.000

Customer: CHEVRON	Job Date: 03-Jun-2011	Sales Order #: 8211704
Well Description: EMERALD	WELL 94X	PUMP TRK 11076824
SVC SPR STARBUCKS	SVC OPR JARED ALLRED	

HALLIBURTON
OptiCem v6.2.3
03-Jun-11 21:47

CHEVRON - EMERALD
WELL 94X - 4TH TOPOUT
3-JUN-2011



Global Event Log							
Intersection			SDPP	Intersection			SDPP
14	Start Job	6/3/2011 23:45:00	2.000	15	Pump Cement	6/3/2011 23:48:10	5.000
16	Shutdown / Waiting For 2 Hours	6/4/2011 00:03:33	39.02	17	End Job For 4th Topout	6/4/2011 00:04:00	7.273

Customer: CHEVRON	Job Date: 03-Jun-2011	Sales Order #: 8211704
Well Description: EMERALD	WELL 94X	PUMP TRK 11076824
SVC SPR STARBUCKS	SVC OPR JARED ALLRED	

HALLIBURTON
 OptiCem v6.2.3
 04-Jun-11 00:32