



SUPERIOR
Black Lick, Pa.
Mercer, Pa.
Wooster, Oh.
Cleveland, Ok.
Trinidad, Co.

SINGLE INDUCTION LOG

Company Pioneer Natural Resources
Well Hopscotch Deep 41-16
Field Purgatoire River
County Las Animas State Colorado

Location: API # : 05 071 09299 00

352' FNL & 1202' FEL

SEC 16 TWP 32S RGE 68W

Permanent Datum Ground Level Elevation 8691'
Log Measured From Kelly Bushing 15' Above G.L.
Drilling Measured From Kelly Bushing

Other Services
cdl
neu

Elevation

K.B. 8706'
D.F. -----
G.L. 8691'

| | | | |
|------------------------------|---------------|---------------|--|
| Date | 4-19-08 | 4-19-08 | |
| Run Number | One | Three | |
| Depth Driller | 6400' | 6400' | |
| Depth Logger | 3930' | 4049' | |
| Bottom Logged Interval | 3928' | 4047' | |
| Top Log Interval | 5 1/2" Casing | 5 1/2" Casing | |
| Casing Driller | 5.5" @ 3483' | 5.5" @ 3942' | |
| Casing Logger | 3500' | 3942' | |
| Bit Size | 7 7/8" | 7 7/8" | |
| Type Fluid in Hole | Water | Water | |
| Density / Viscosity | /// | /// | |
| pH / Fluid Loss | /// | /// | |
| Source of Sample | /// | /// | |
| Rm @ Meas. Temp | /// | /// | |
| Rmf @ Meas. Temp | /// | /// | |
| Rmc @ Meas. Temp | /// | /// | |
| Source of Rmf / Rmc | /// | /// | |
| Rm @ BHT | /// | /// | |
| Time Circulation Stopped | 6:00 P.M. | 6:00 P.M. | |
| Time Logger on Bottom | 1:15 P.M. | 6:15 P.M. | |
| Maximum Recorded Temperature | /// | /// | |
| Equipment Number | T0701 | T0701 | |
| Location | Trinidad | Trinidad | |
| Recorded By | C. Sisneros | C. Sisneros | |
| Witnessed By | Mr. Dean Sipe | Mr. Dean Sipe | |

<<< Fold Here >>>

All interpretations are opinions based on inferences from electrical or other measurements and we cannot and do not guarantee the accuracy or correctness of any interpretation, and we shall not, except in the case of gross or willful negligence on our part, be liable or responsible for any loss, costs, damages, or expenses incurred or sustained by anyone resulting from any interpretation made by any of our officers, agents or employees. These interpretations are also subject to our general terms and conditions set out in our current Price Schedule.

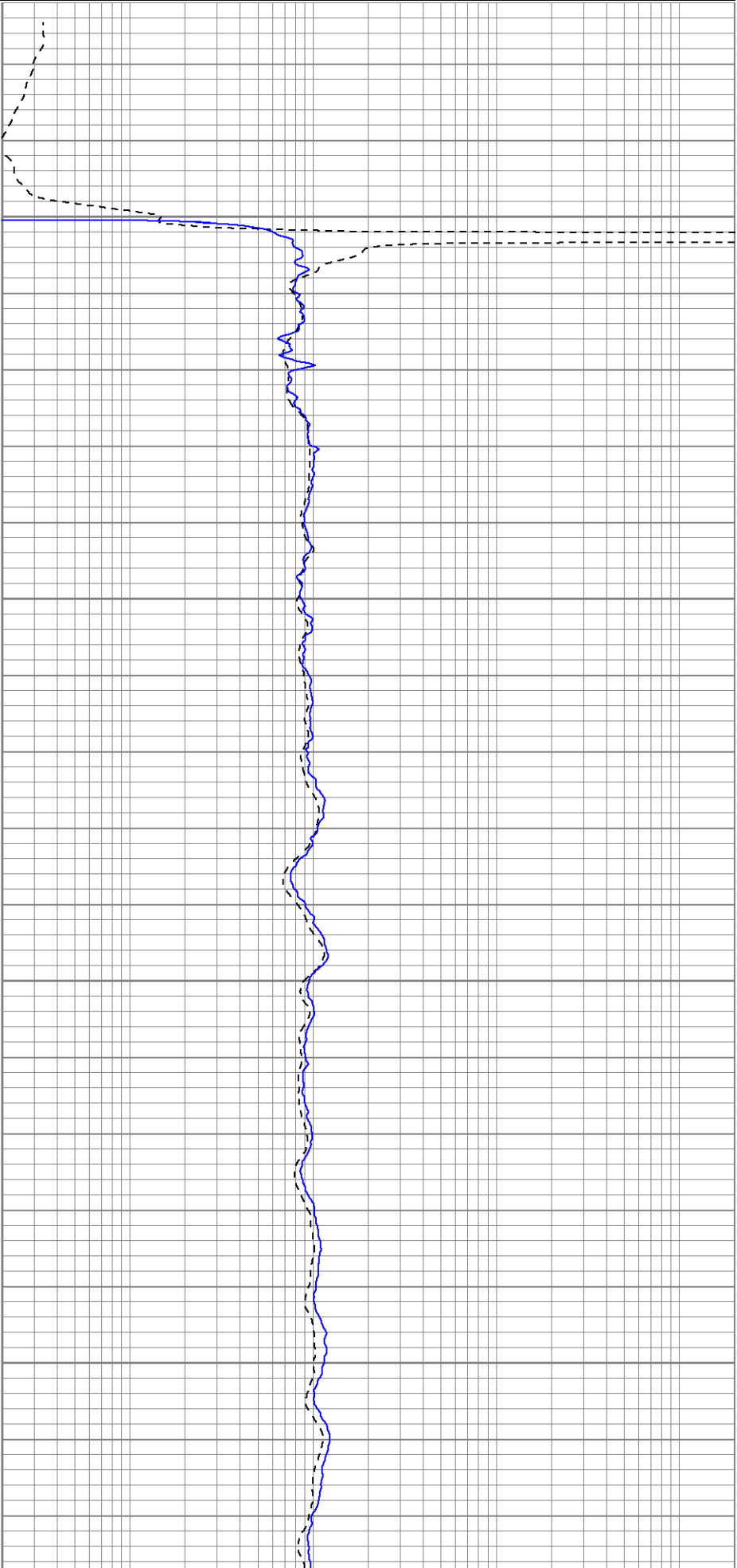
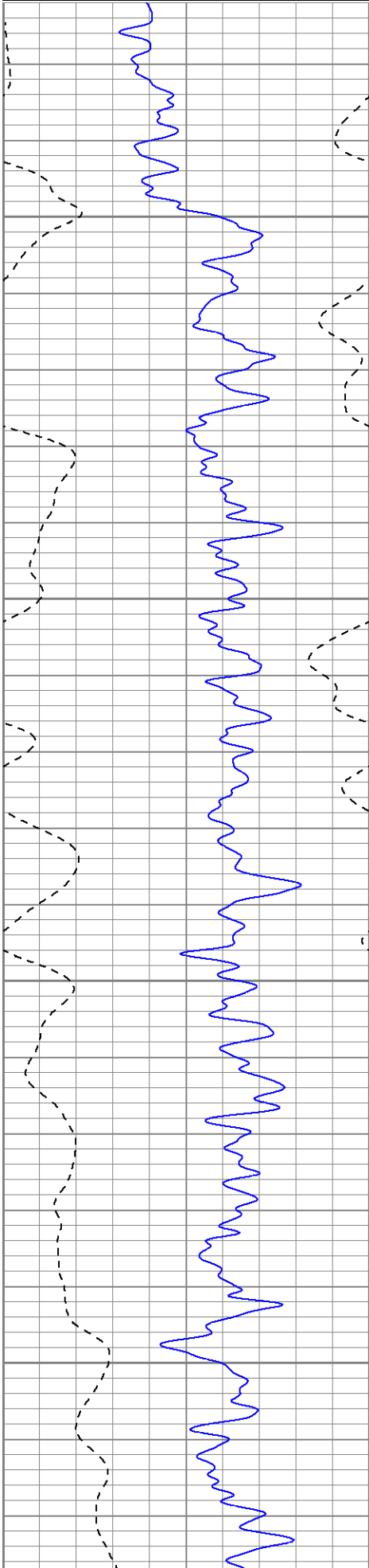
Comments

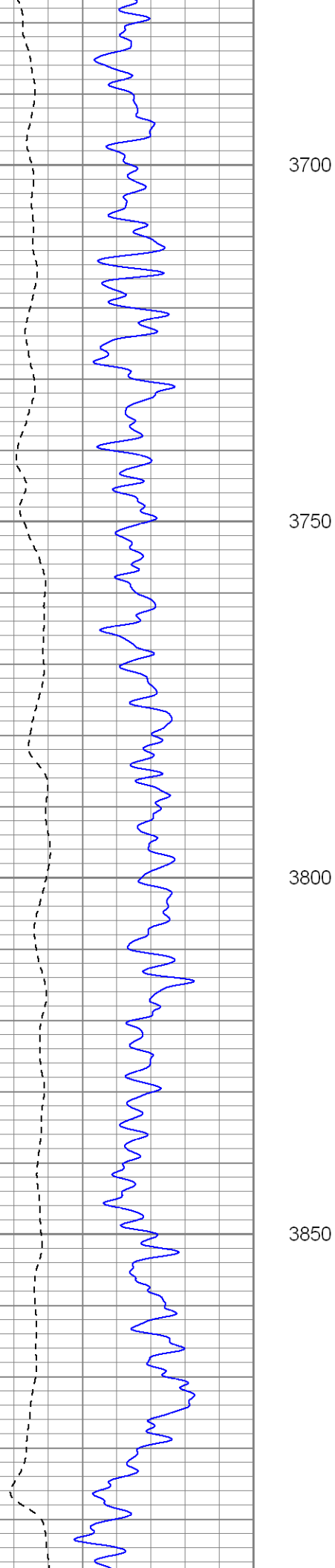
8 5/8" Surface Casing set @ 1247'.
Multiple Passes made thru 5.5" Casing. Merged all data.
Well Directions:
Wet Canyon turn left at Hick School, first right after four way,
go thru gate, drive thru a location, at T go right, at Y go left,
go thru three gates (0000), after third gate drive thru a location,
dead end on location.

Database File: hopscotchdeep.db
Dataset Pathname: pass1.1
Presentation Format: iel
Dataset Creation: Sat Apr 19 13:40:53 2008 by Calc Open-Cased 070814
Charted by: Depth in Feet scaled 1:240

| | | |
|------|-----------|-----|
| 0 | GR (GAPI) | 200 |
| -200 | SP (mV) | 0 |

| | | |
|-----|-------------|------|
| 0.2 | DIR (Ohm-m) | 2000 |
| 0.2 | SN (Ohm-m) | 2000 |



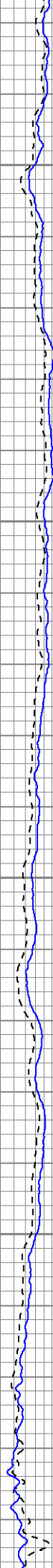


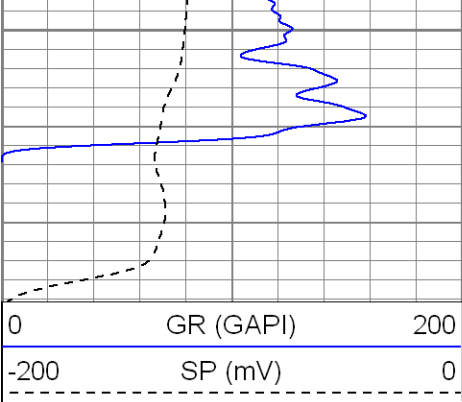
3700

3750

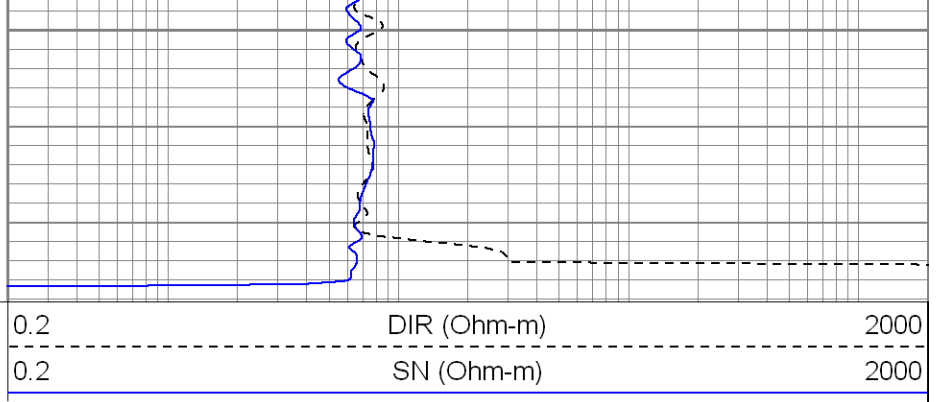
3800

3850

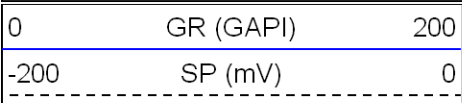




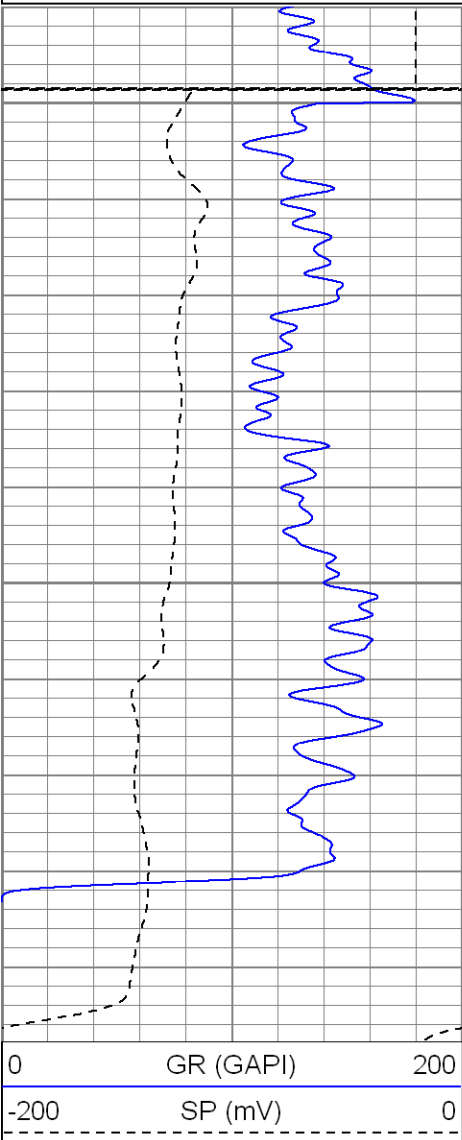
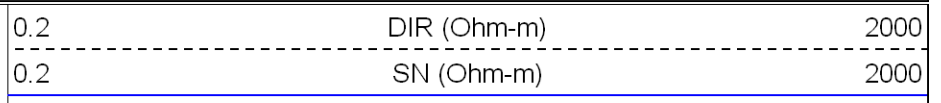
3900



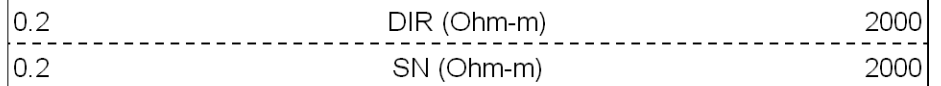
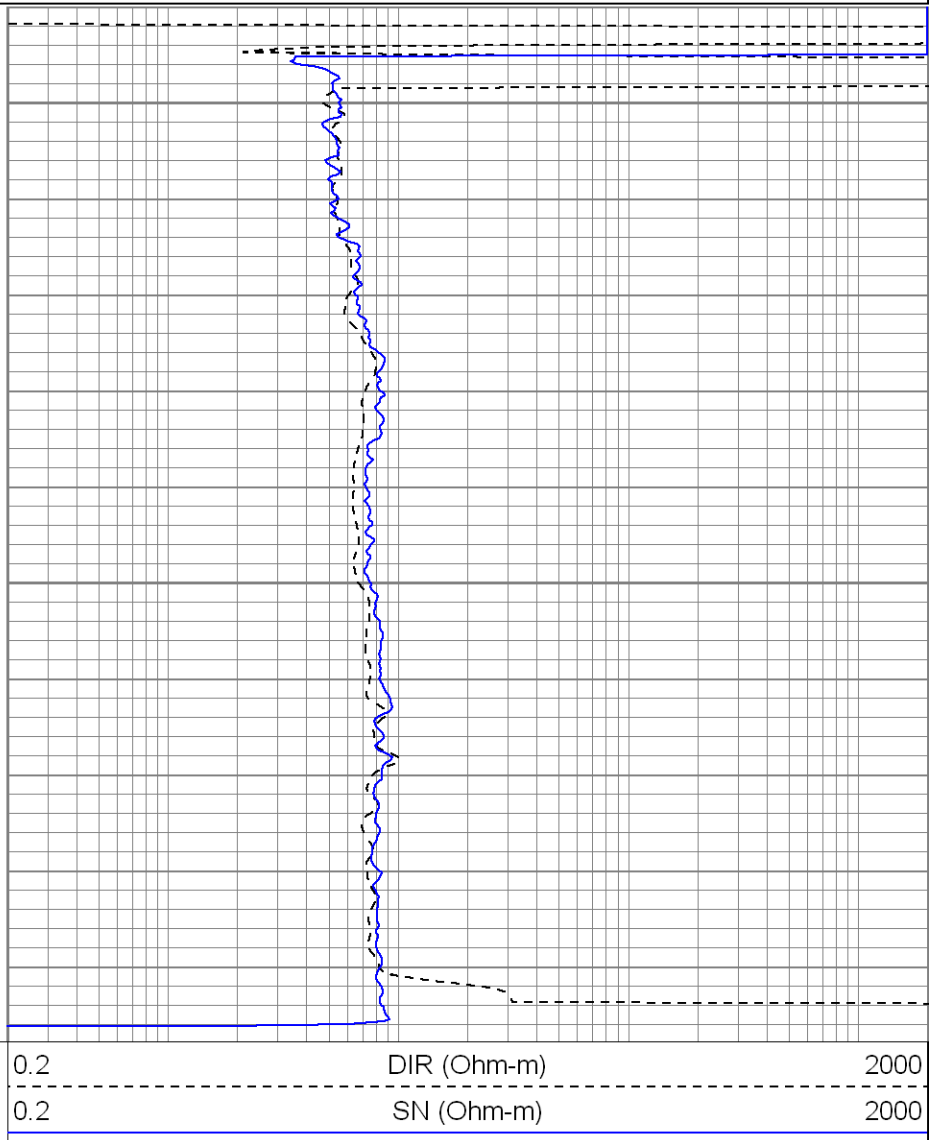
Database File: hopscotchdeep.db
Dataset Pathname: pass8.1
Presentation Format: iel
Dataset Creation: Sat Apr 19 19:35:46 2008 by Calc Open-Cased 070814
Charted by: Depth in Feet scaled 1:240



3950



4000





SUPERIOR

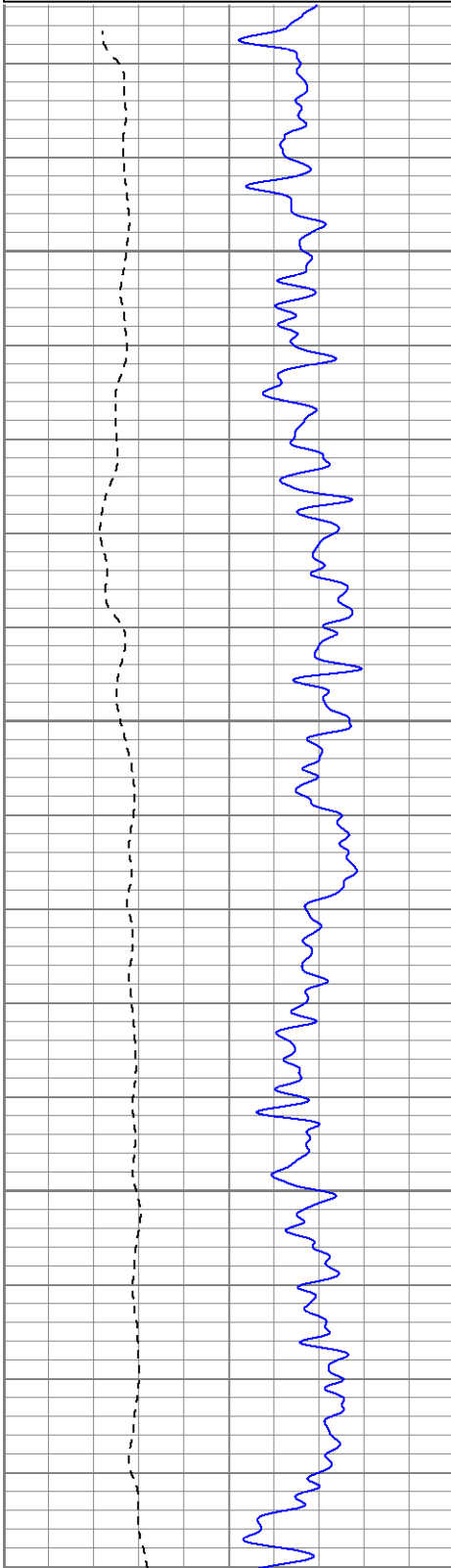
Black Lick, Pa.
Mercer, Pa.
Wooster, Oh.
Cleveland, Ok.
Trinidad, Co.

Repeat Pass

Database File: hopscotchdeep.db
Dataset Pathname: pass2.1
Presentation Format: iel
Dataset Creation: Sun Apr 20 09:34:12 2008 by Calc Open-Cased 070814
Charted by: Depth in Feet scaled 1:240

| | | |
|------|-----------|-----|
| 0 | GR (GAPI) | 200 |
| -200 | SP (mV) | 0 |

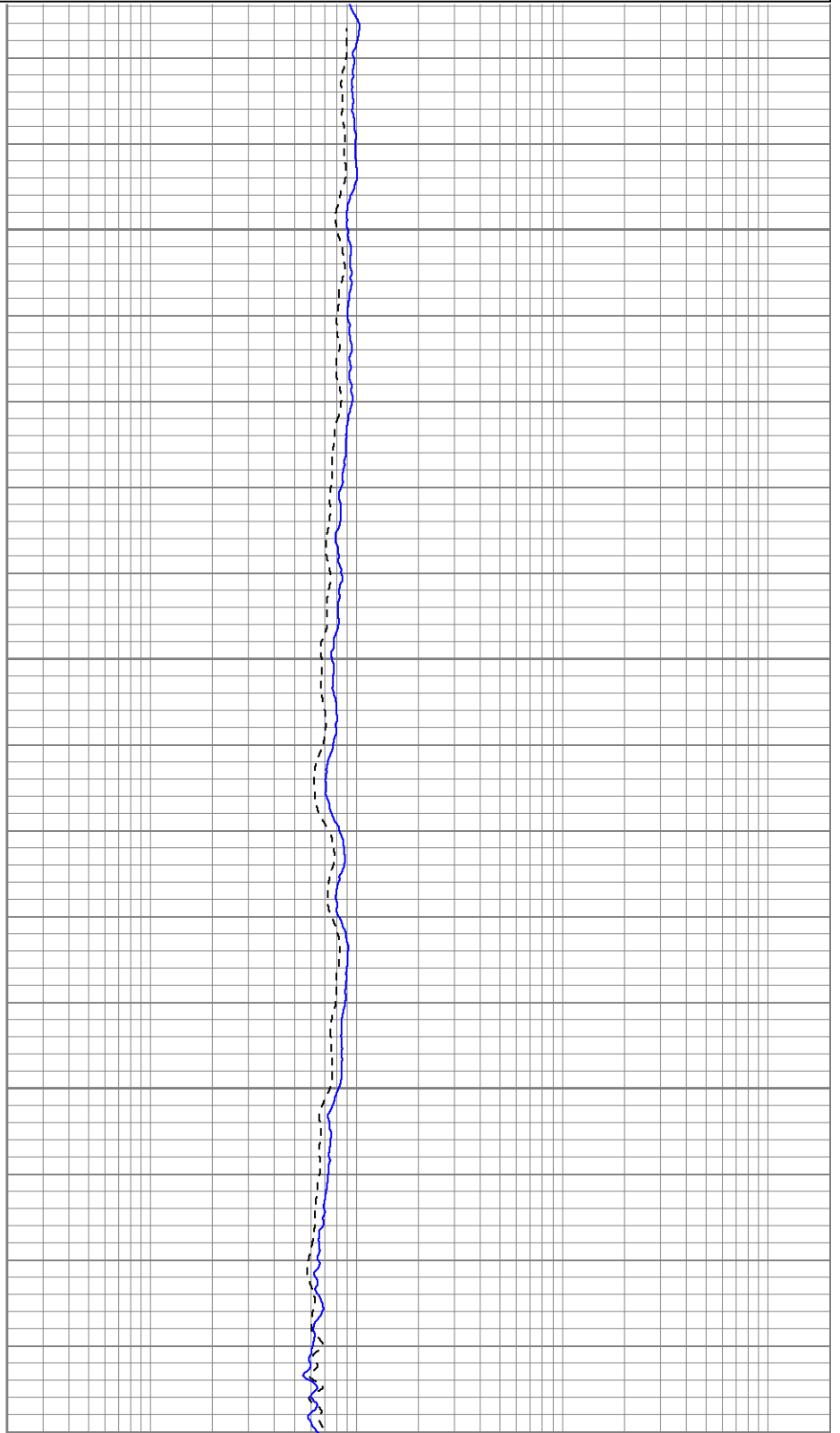
| | | |
|-----|-------------|------|
| 0.2 | DIR (Ohm-m) | 2000 |
| 0.2 | SN (Ohm-m) | 2000 |

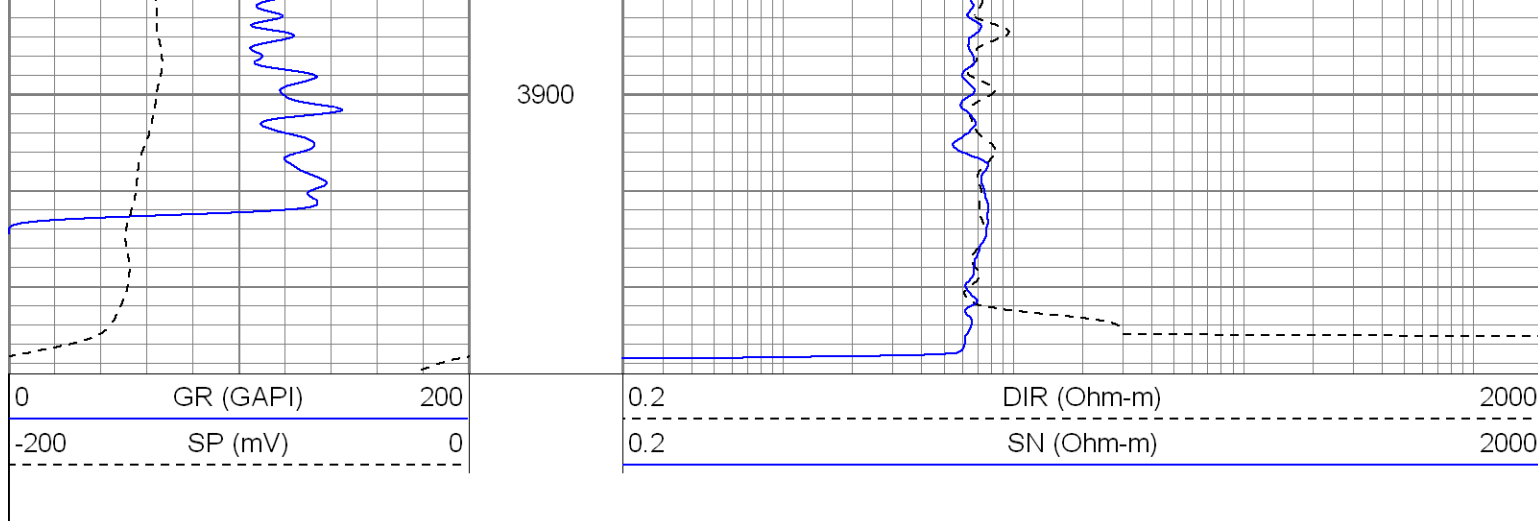


3750

3800

3850





Calibration Report

Database File: hopscotchdeep.db
 Dataset Pathname: pass1
 Dataset Creation: Sat Apr 19 13:32:10 2008 by Log Open-Cased 070814

Induction Tool Calibration Report

Serial Number: 040903
 Tool Model: Probe
 Downhole Cal Performed: Thu Apr 17 14:00:25 2008
 Surface Cal Performed: Thu Apr 17 14:00:48 2008

| | | | |
|-------------------------|--------|---------|------|
| Surface Calibration: | Air | Loop | |
| Conductivity Reference: | 0.000 | 500.000 | mmho |
| Conductivity Reading: | -0.045 | 0.649 | V |
| Internal Reference: | Zero | Cal | |
| Conductivity Reference: | 0.000 | 500.000 | mmho |
| Conductivity Reading: | 0.015 | 0.649 | V |

| | | | |
|-------------------------|---------------|--------------|-------|
| Downhole Calibration: | Internal Zero | Internal Cal | |
| Conductivity Reference: | 0.534 | 500.385 | mmho |
| Conductivity Reading: | -0.361 | 500.250 | V |
| Short Normal Reference: | 0.000 | 20.000 | Ohm-m |
| Short Normal Reading: | 0.006 | 0.234 | V |

| | | |
|---------------------------|---------|--------|
| Results: | Gain | Offset |
| Loop Conductivity: | 720.595 | 32.427 |
| Downhole Correction: | 0.998 | 0.894 |
| Short Normal Resistivity: | 71.000 | -3.000 |


Gamma Ray Calibration Report

Serial Number: 801
 Tool Model: 2.75POH
 Performed: Thu Apr 03 07:26:49 2008

Calibrator Value: 1.0 GAPI

Background Reading: 0.0 cps
 Calibrator Reading: 1.0 cps

Sensitivity: 0.8000 GAPI/cps

| Sensor | Offset (ft) | Schematic | Description | Len (ft) | OD (in) | Wt (lb) |
|--------|-------------|---|------------------|----------|---------|---------|
| GR | 16.41 |  | None | 0.75 | 1.50 | 5.00 |
| | | | GR 2.75POH (801) | 2.75 | 2.75 | 12.00 |

