



DEPTH SCALE: 5":100'

VERSION: 80214133R"

MAIN PASS

153115 CBLMAINF

FINISH DEPTH: 3799.2 Feet DIRECTION: UP DATE: 12/23/2008 TIME: 23:40 MODE: ORIGINAL

Collar Locator

-8000 Millivolts 880

Gamma Ray

0 API 150

TRAVEL TIME 3FT

310 Microseconds 210

Tension

0 2400

AMPLITUDE 3FT X5

0 Millivolts 20

AMPLITUDE 3FT

0 Millivolts 100

FREE PIPE GATE

200 Microseconds 1200

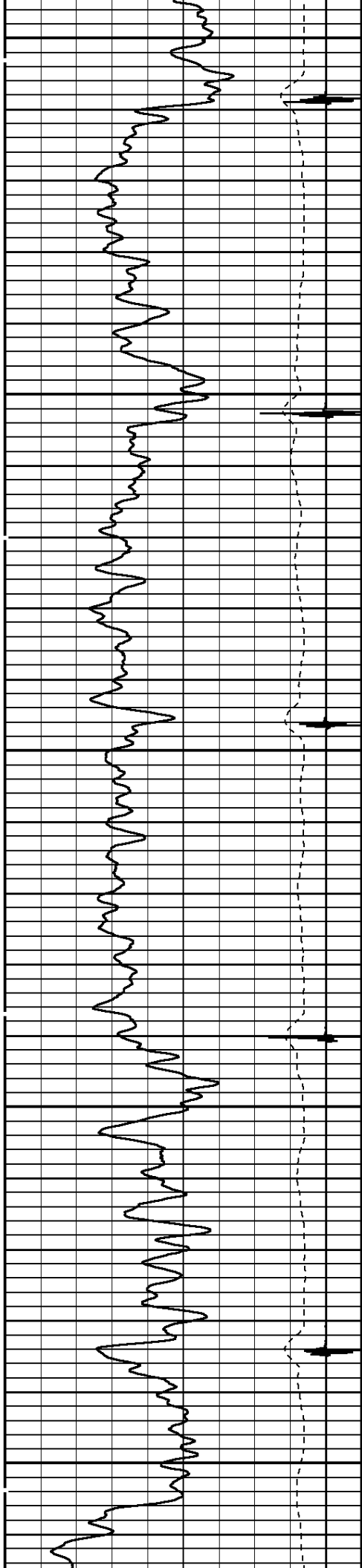
FREE PIPE GATE

200 Microseconds 1200

VARIABLE DENSITY 5FT

200 Microseconds 1200

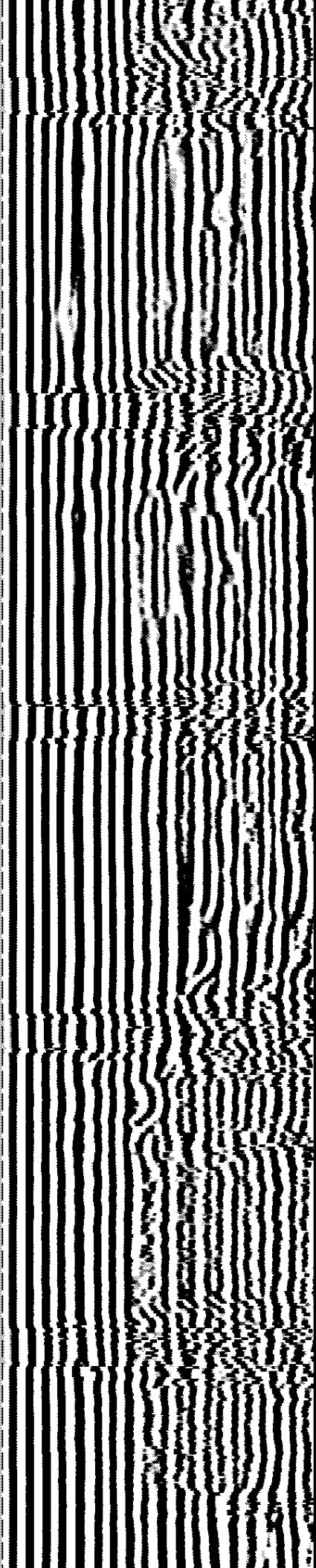
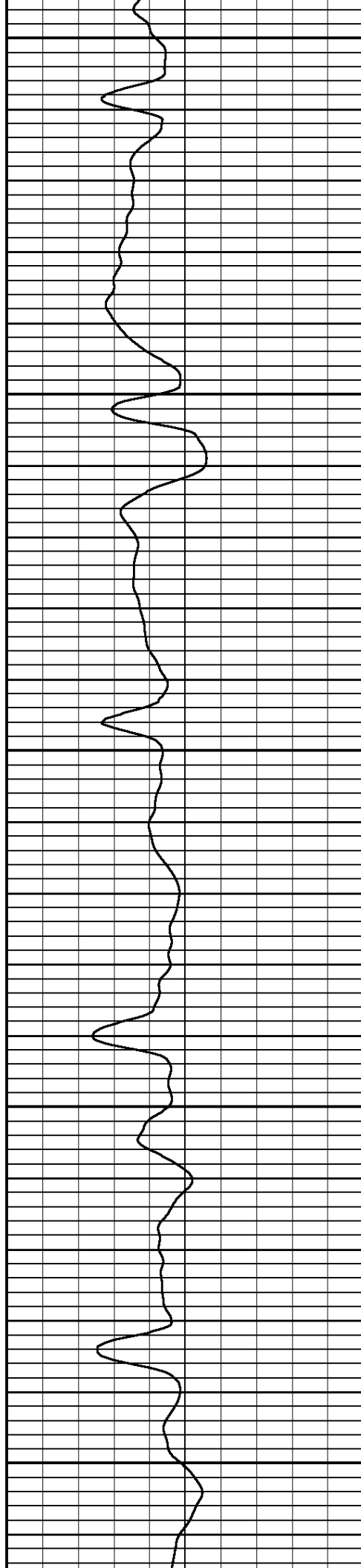
3800

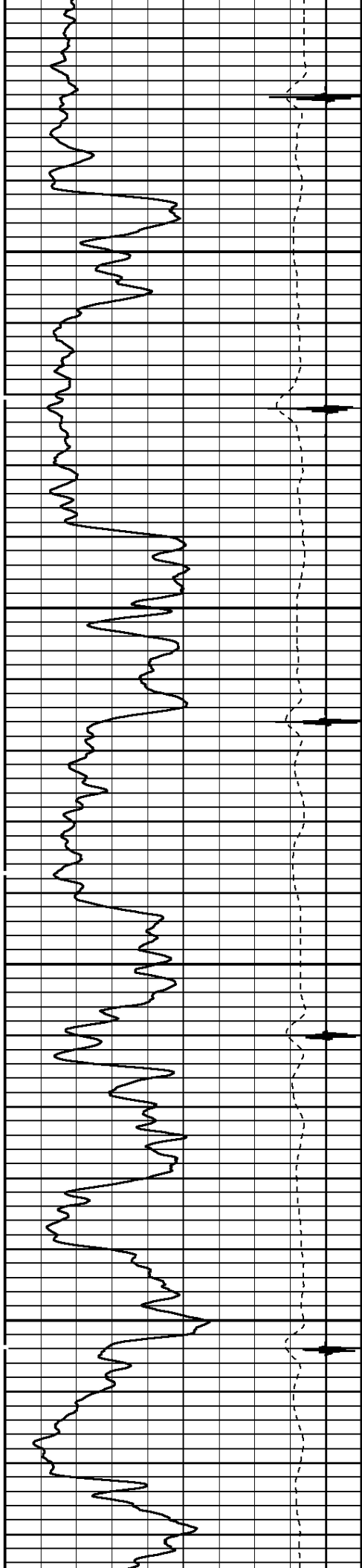


3900

4000

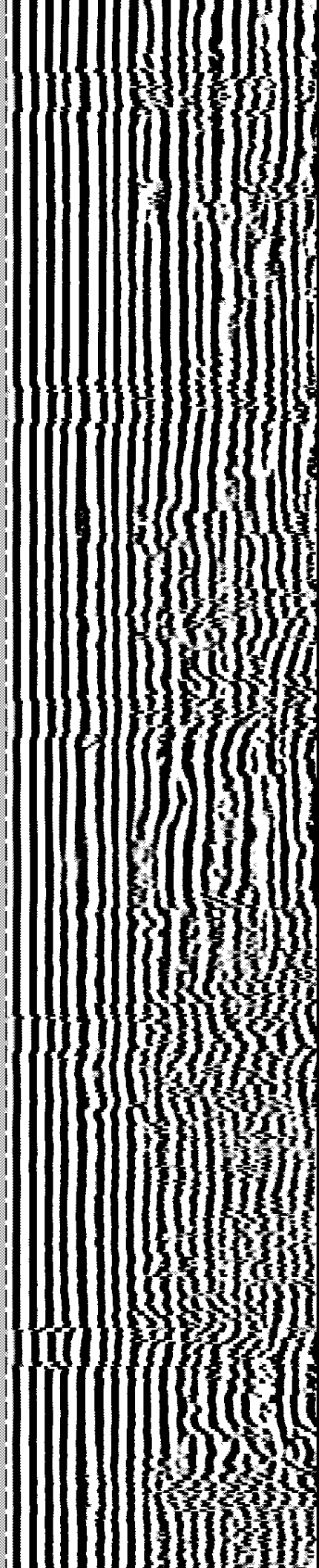
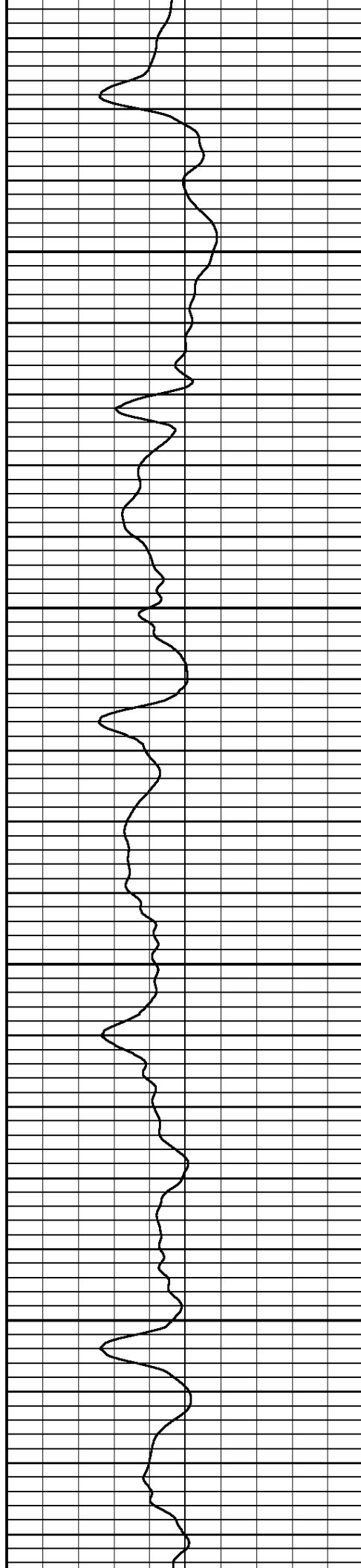
4100

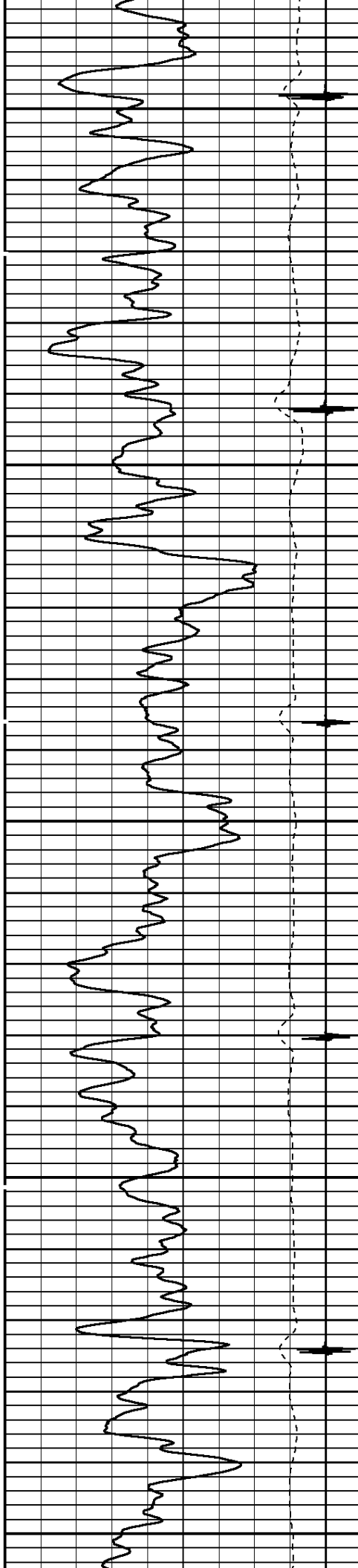




4200

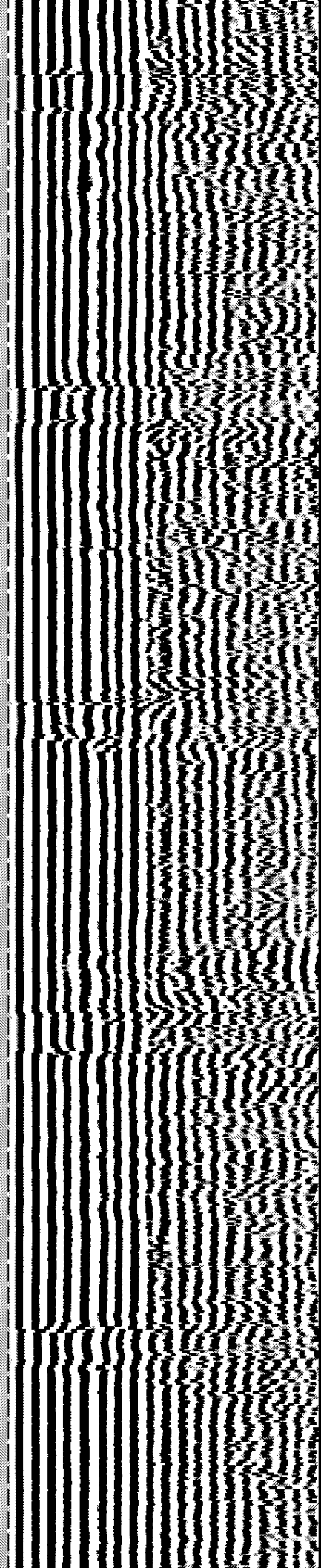
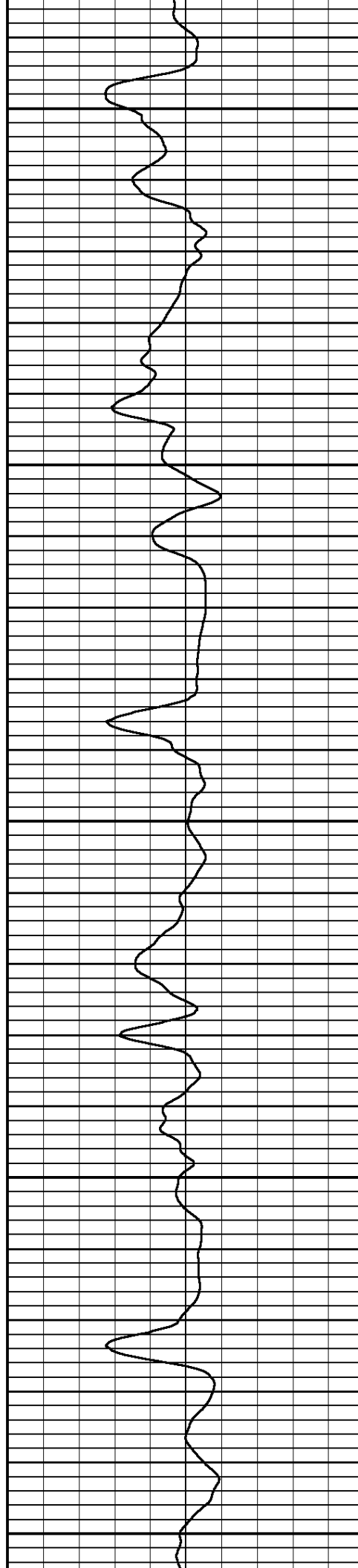
4300

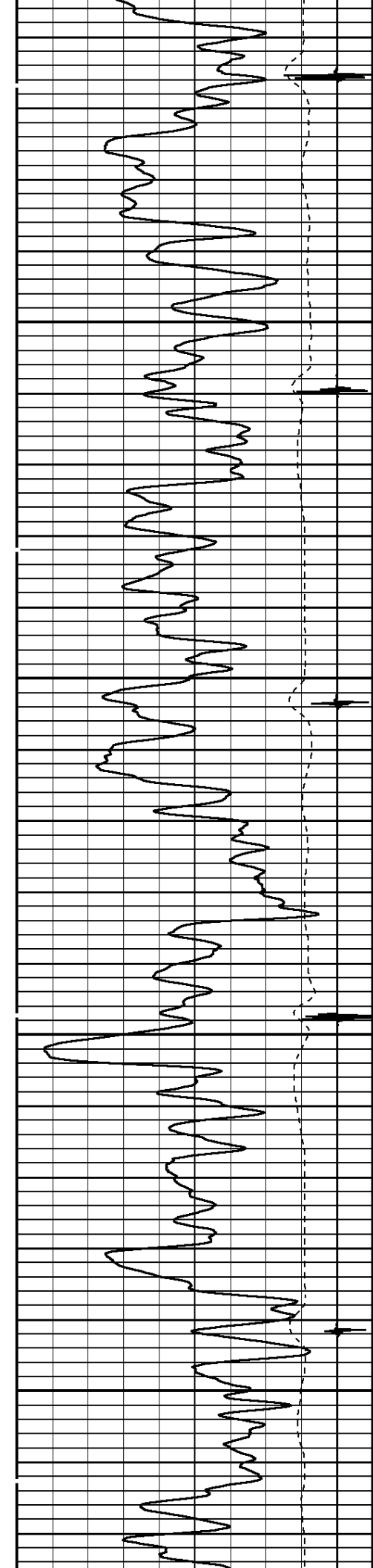




4400

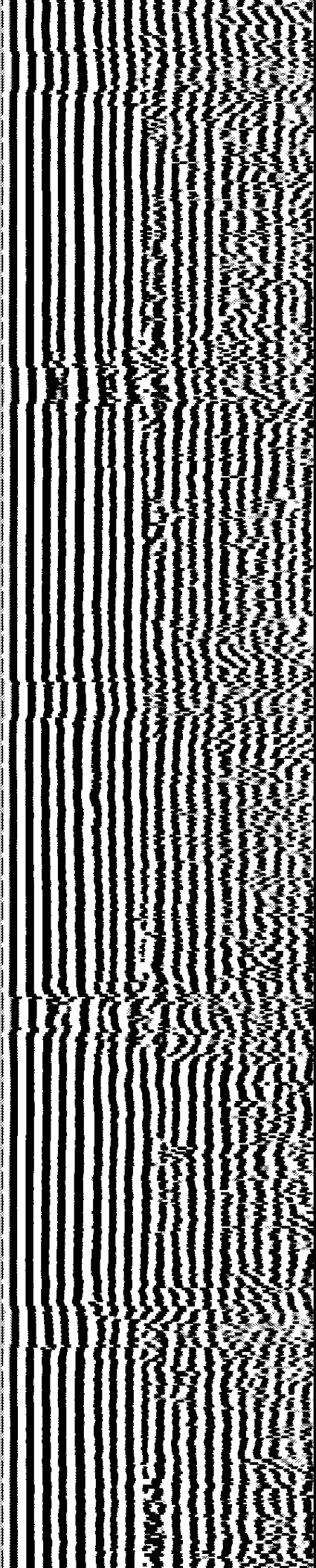
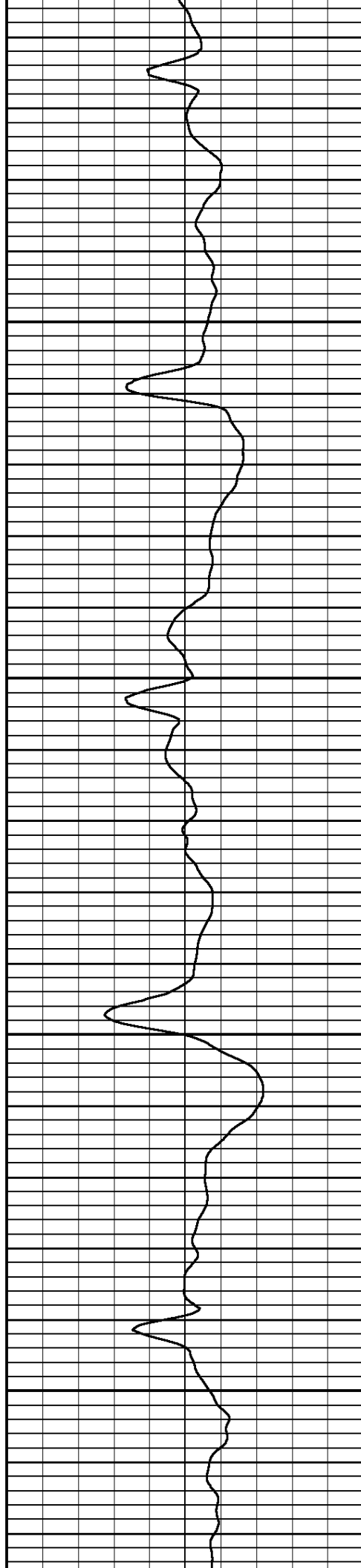
4500

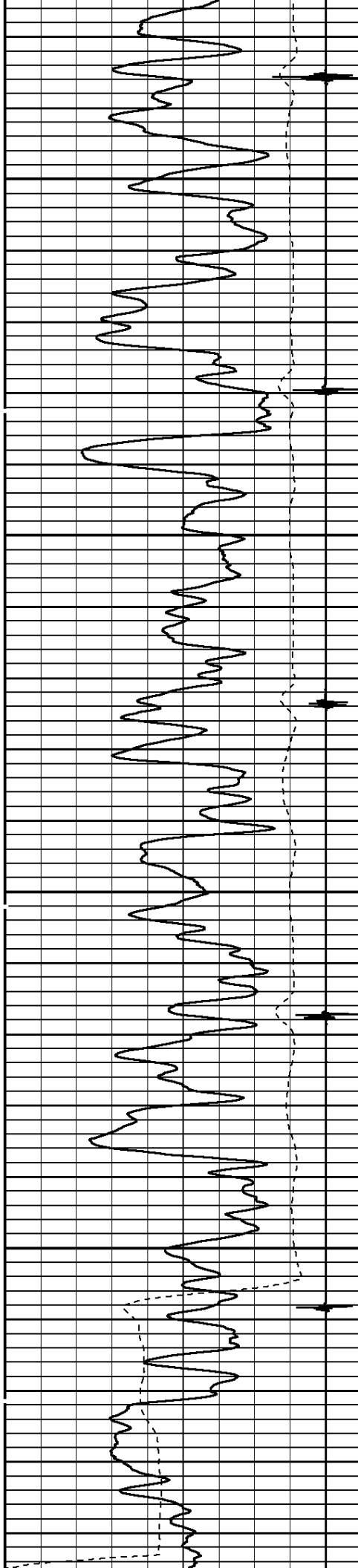




4600

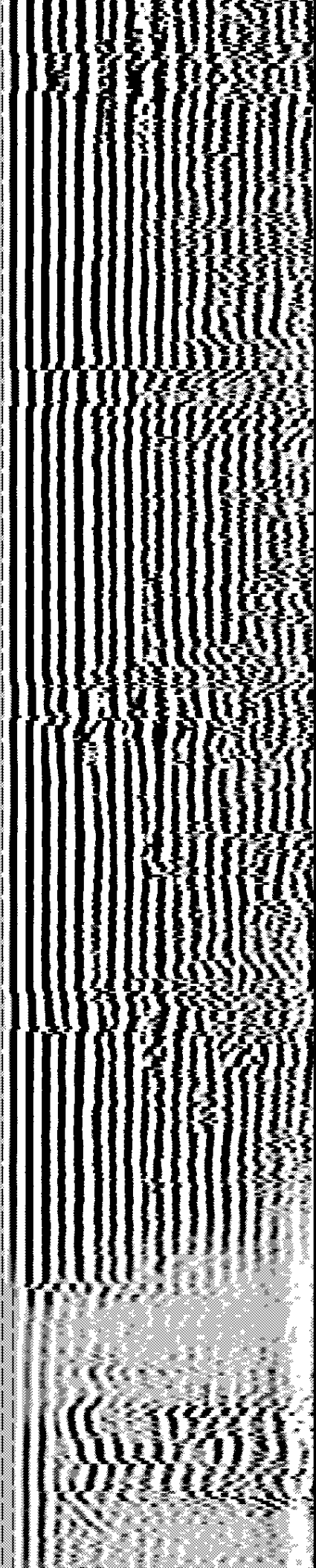
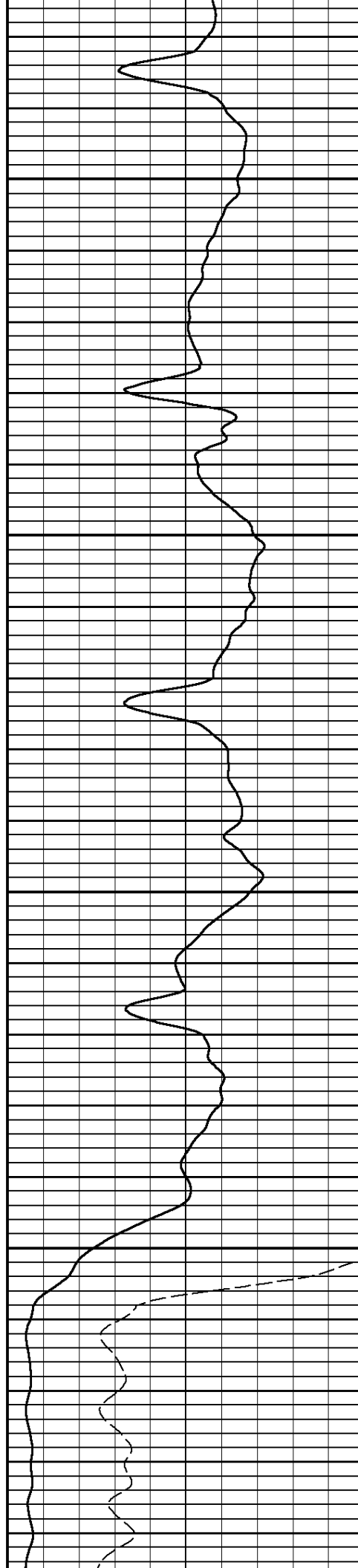
4700

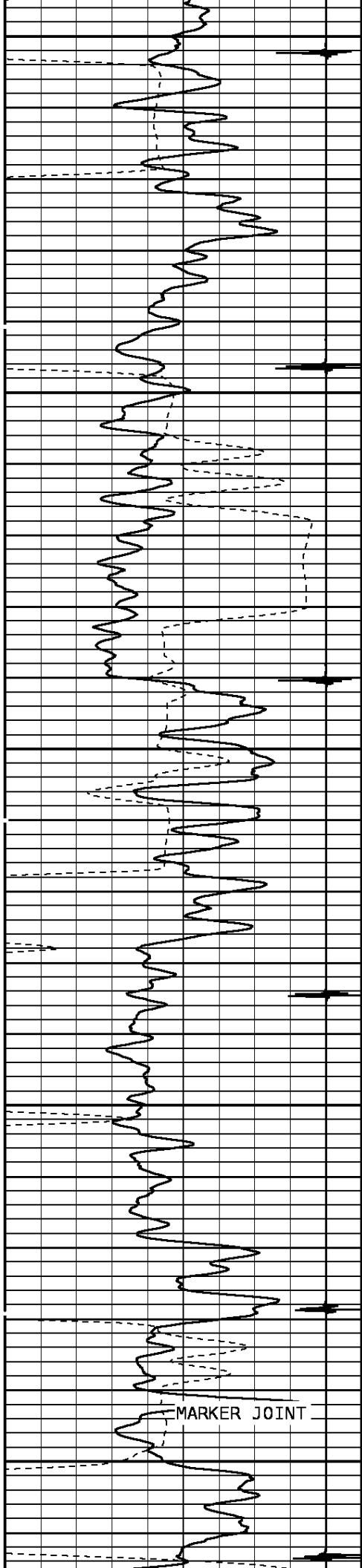




4800

4900



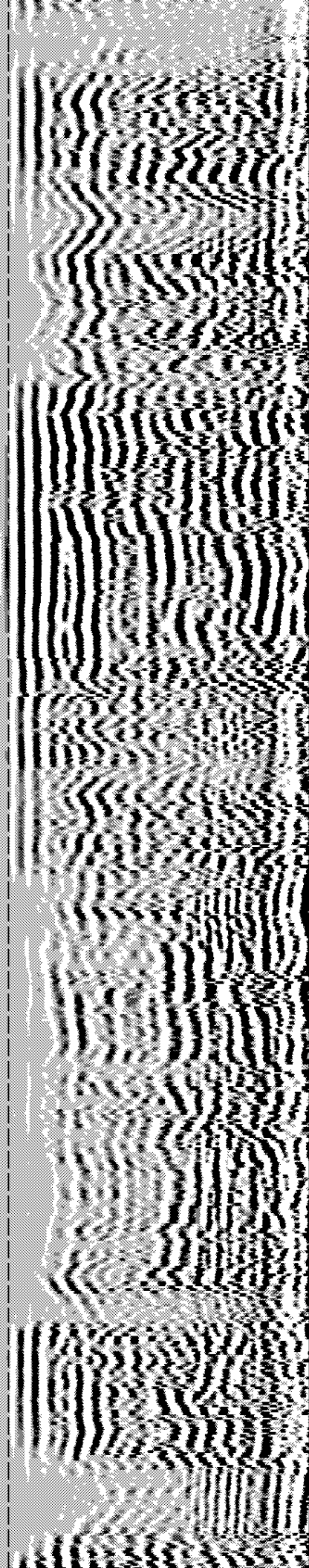
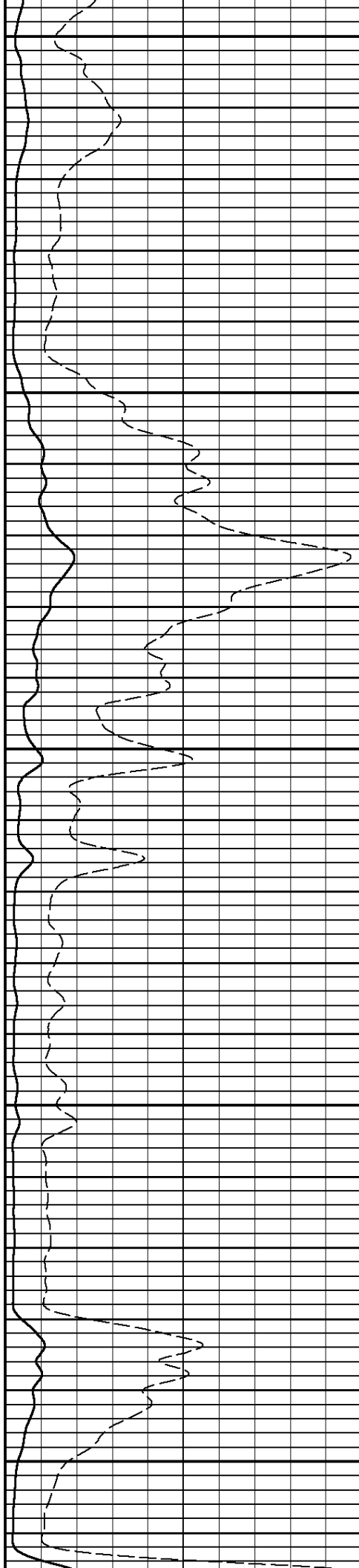


5000

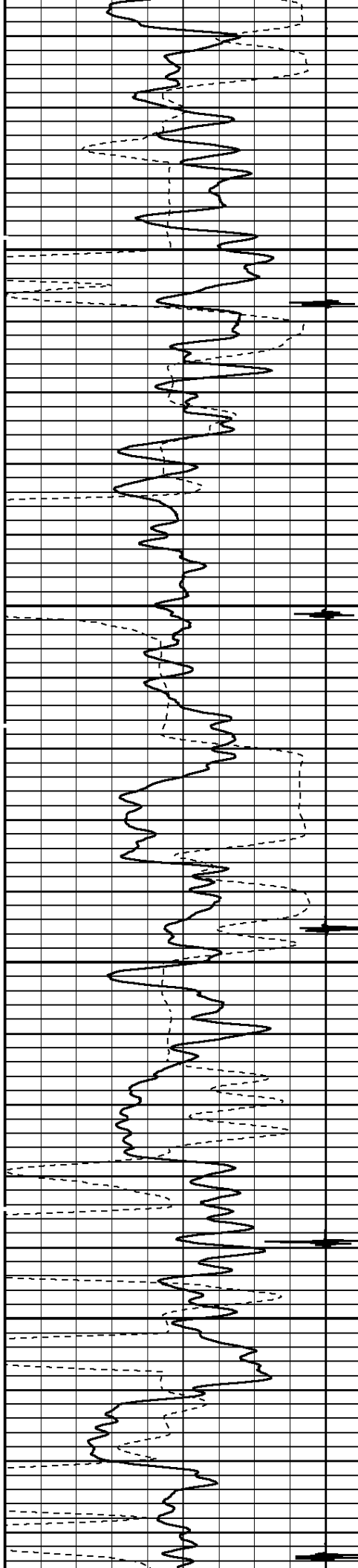
5100

5200

MARKER JOINT

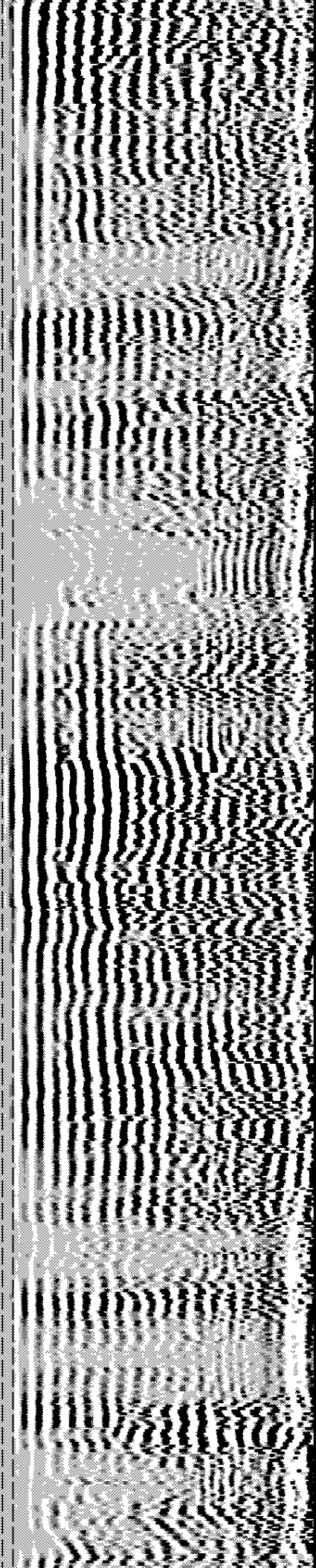
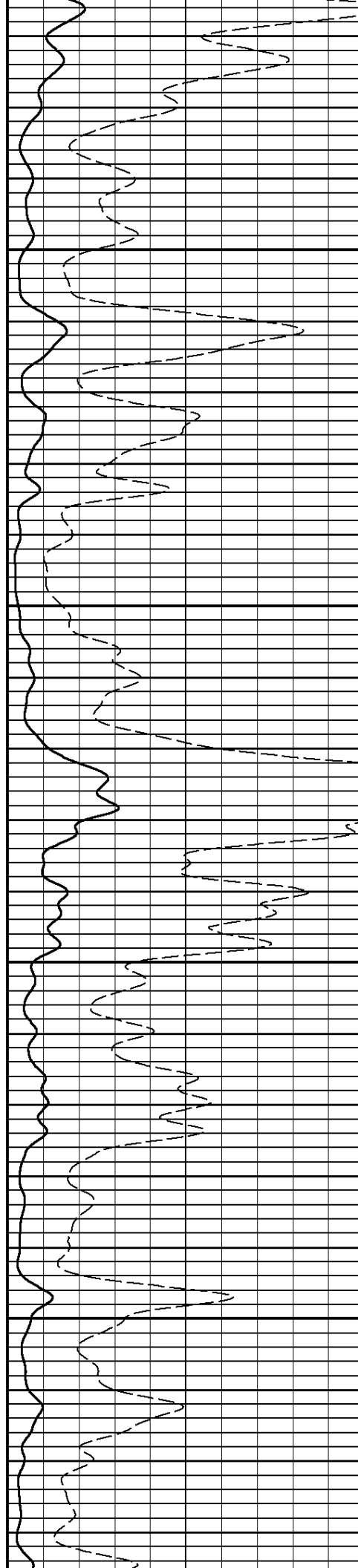


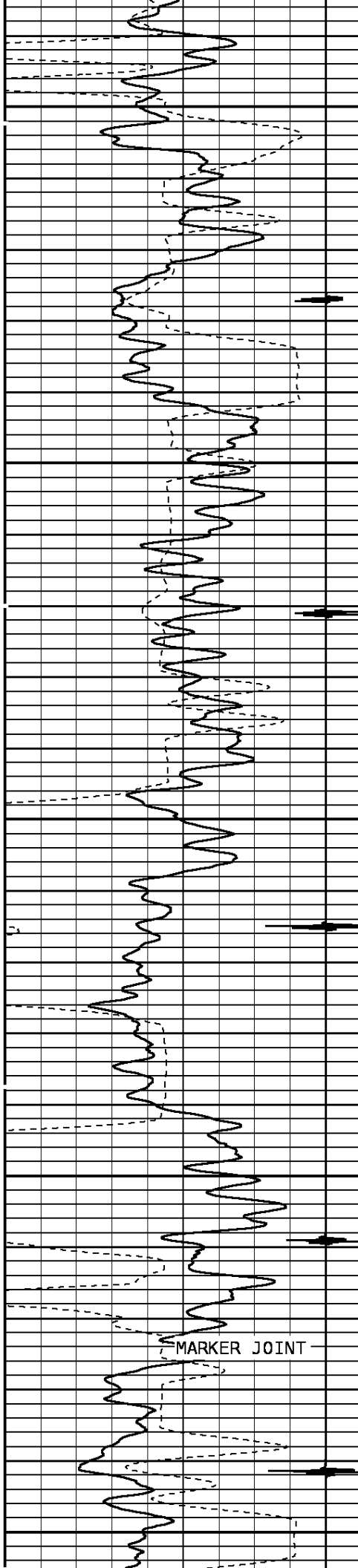




5300

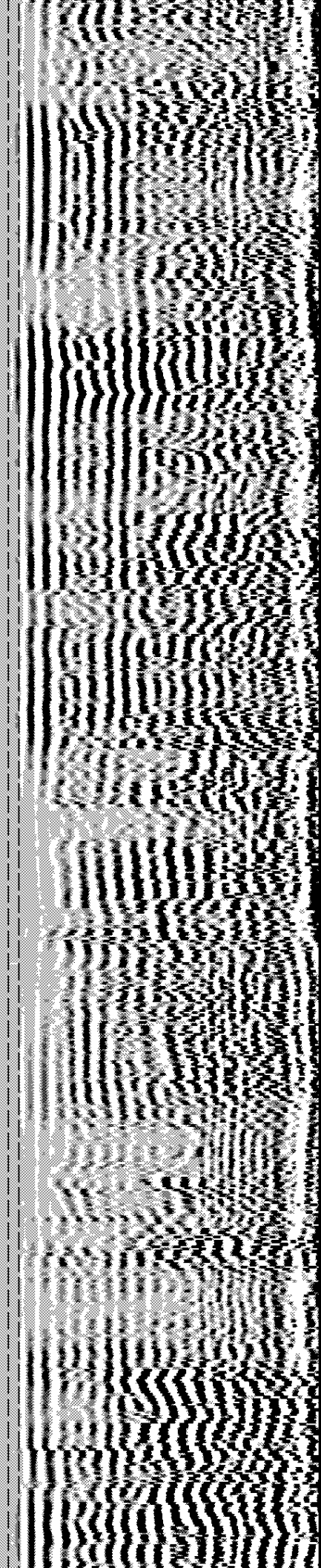
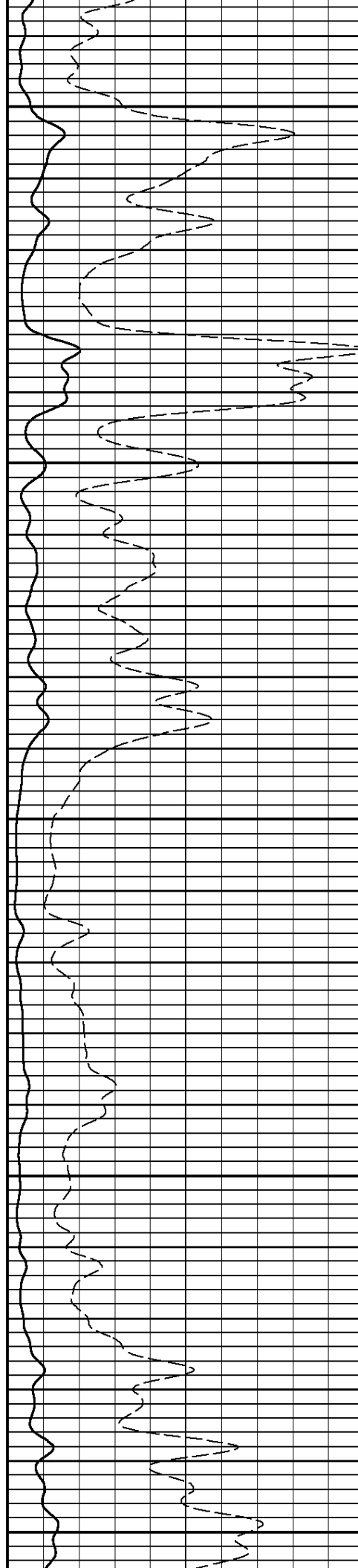
5400

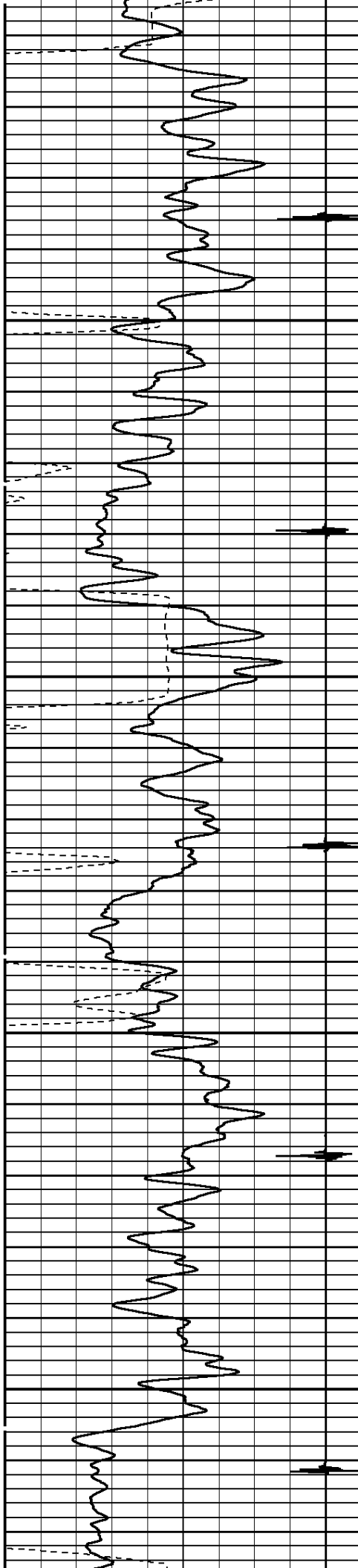




5500

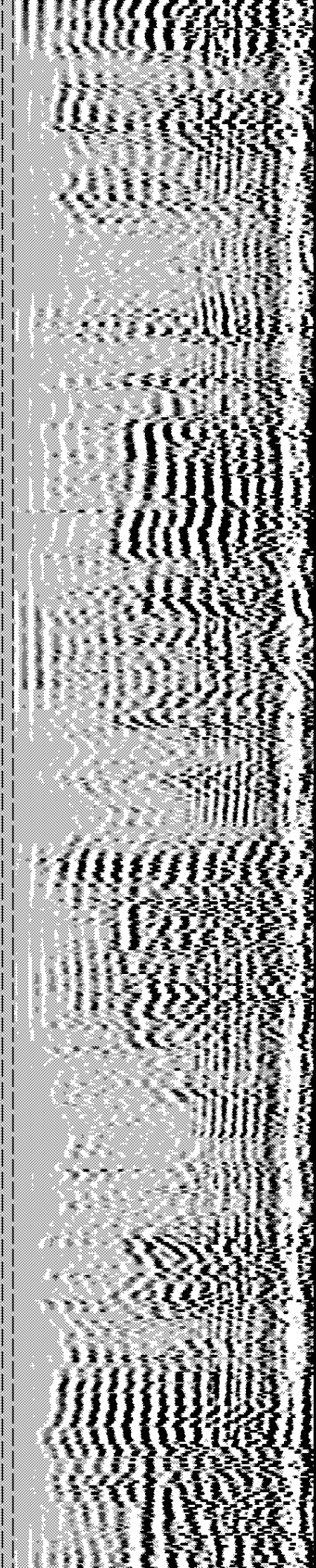
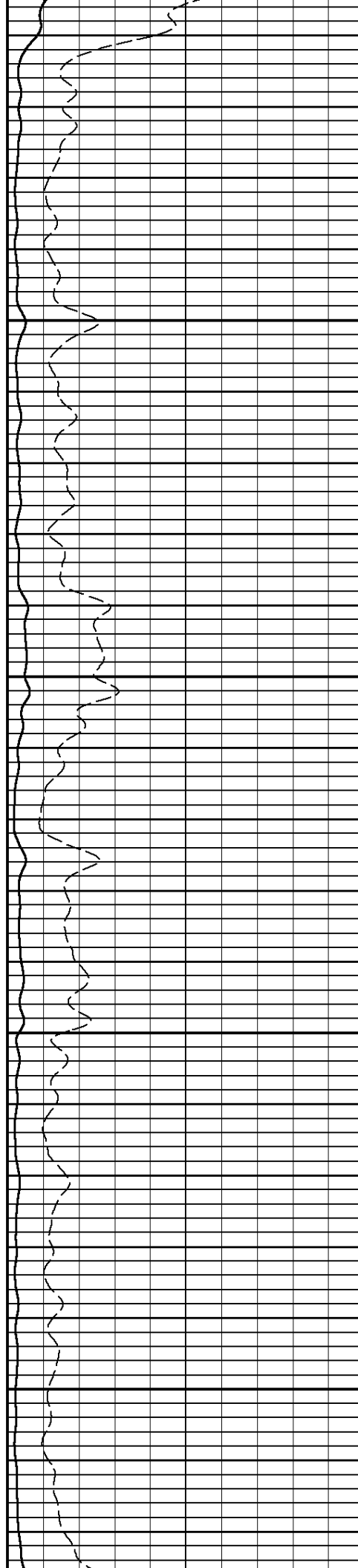
5600

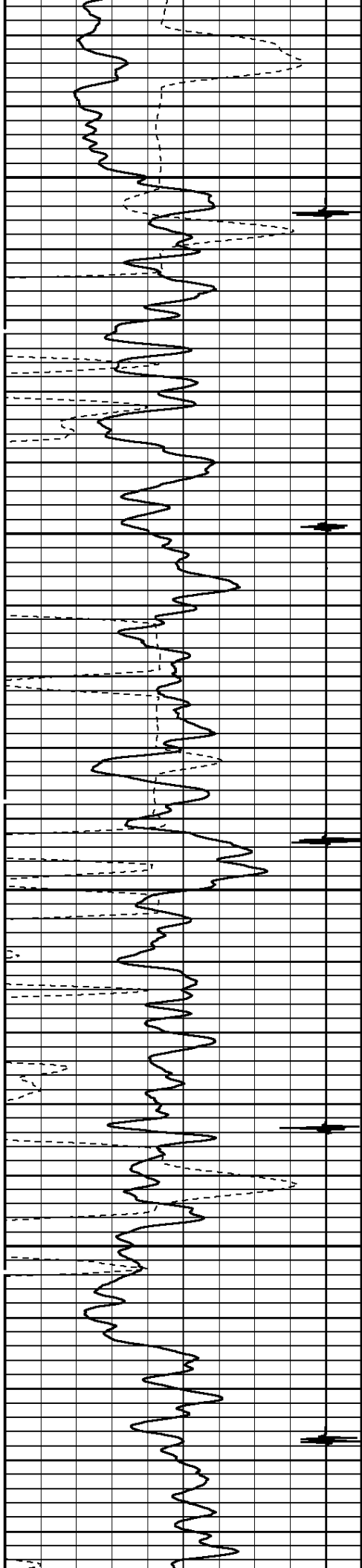




5700

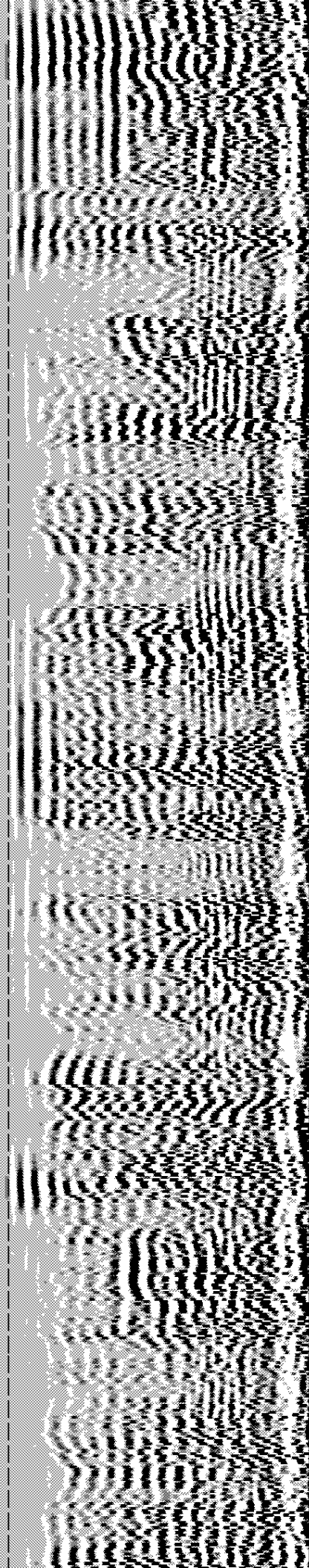
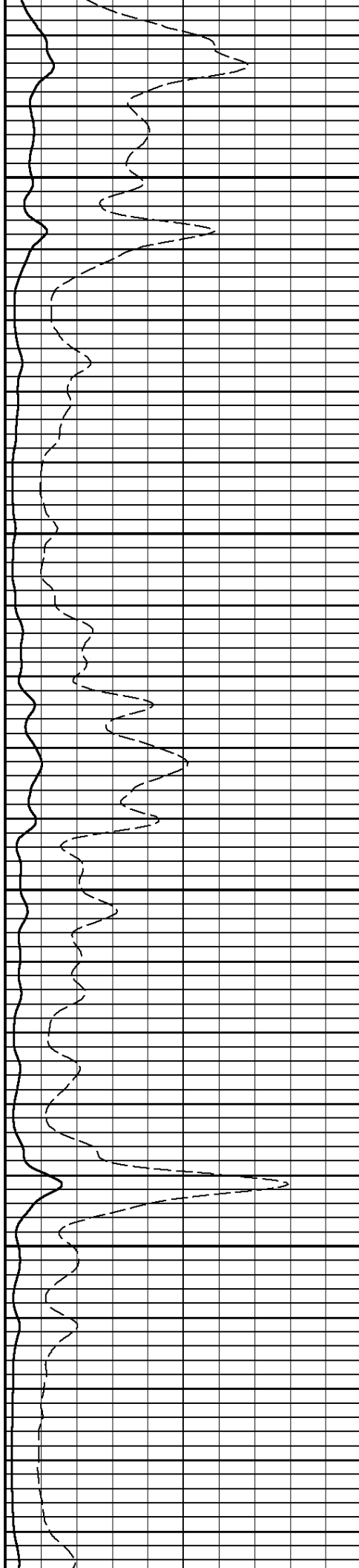
5800

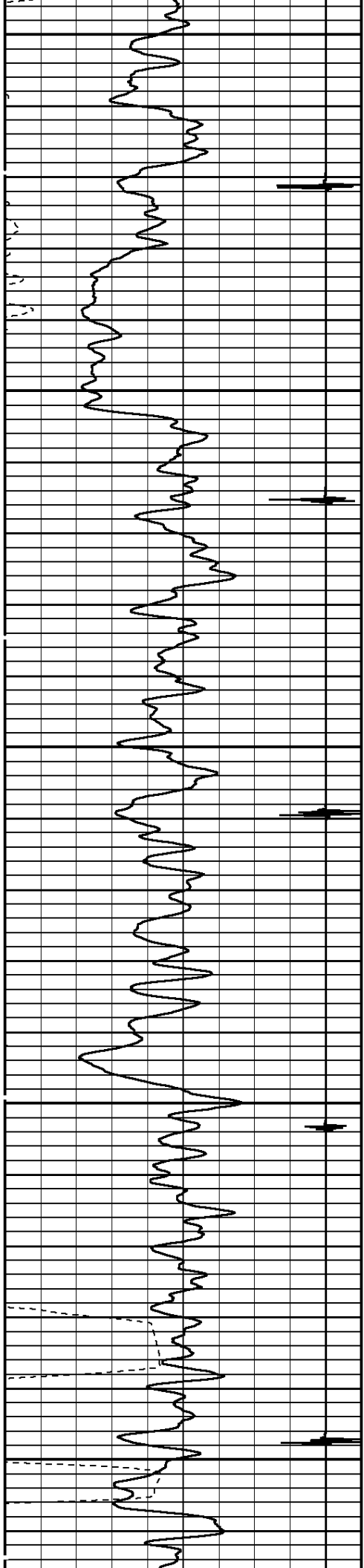




5900

6000

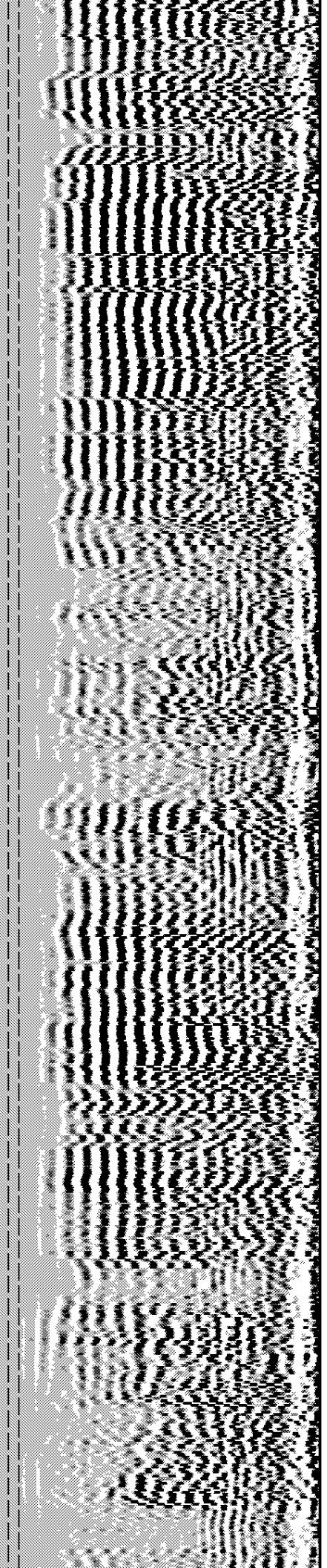
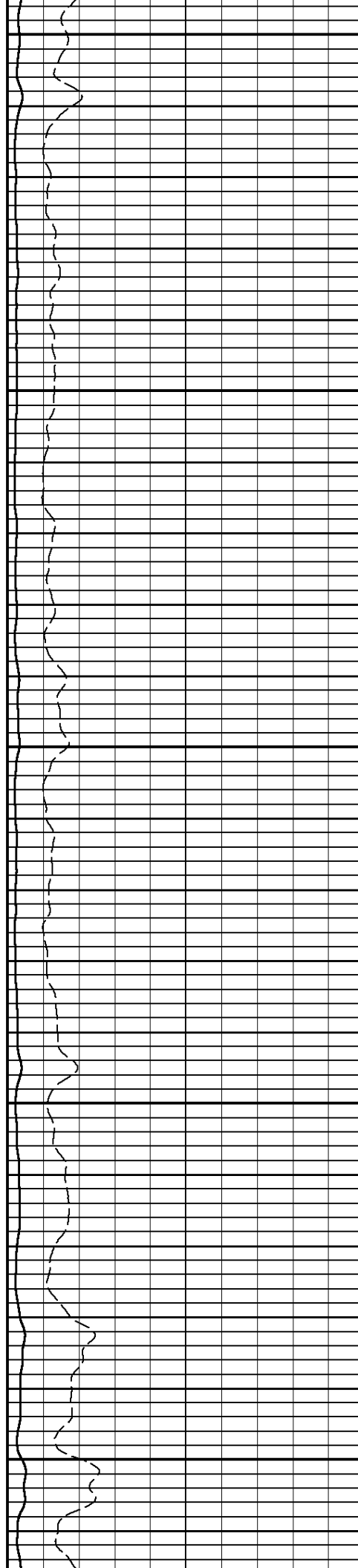


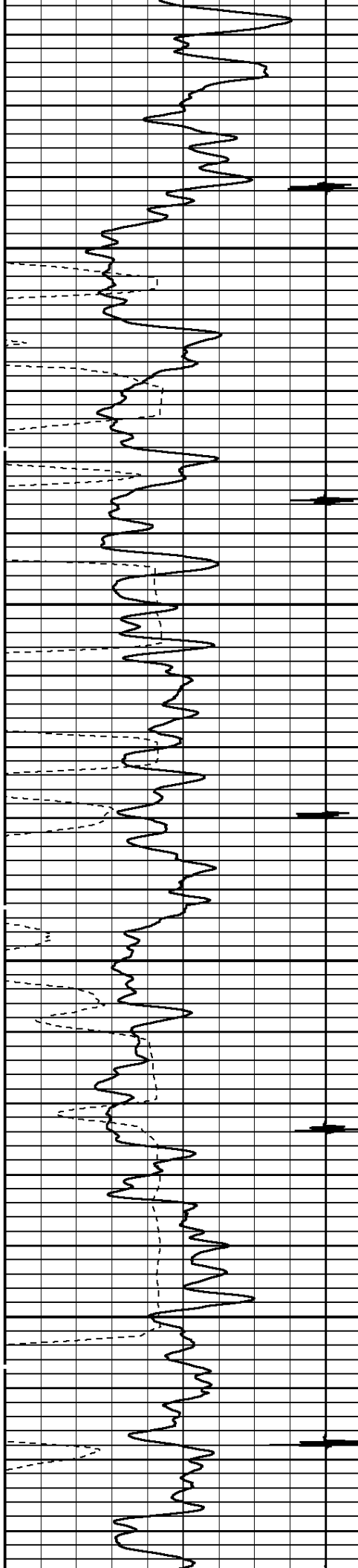


6100

6200

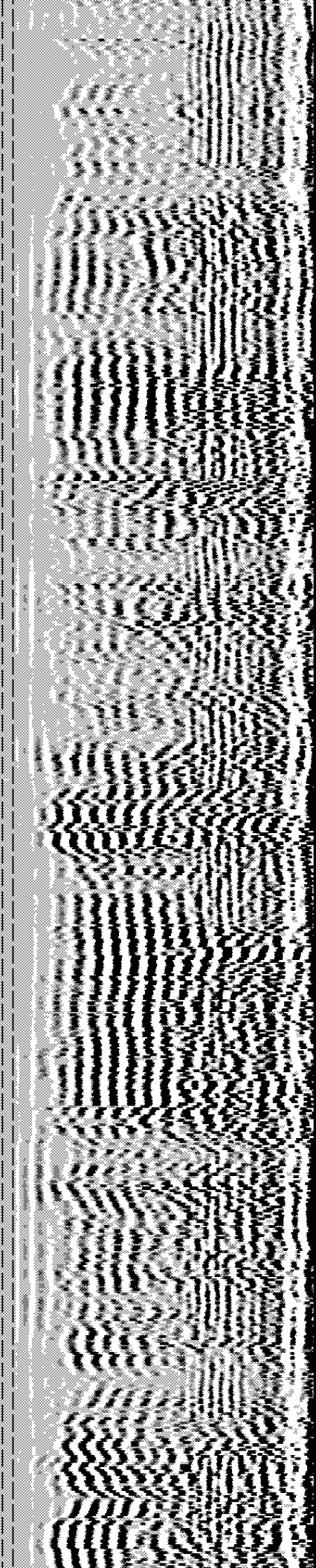
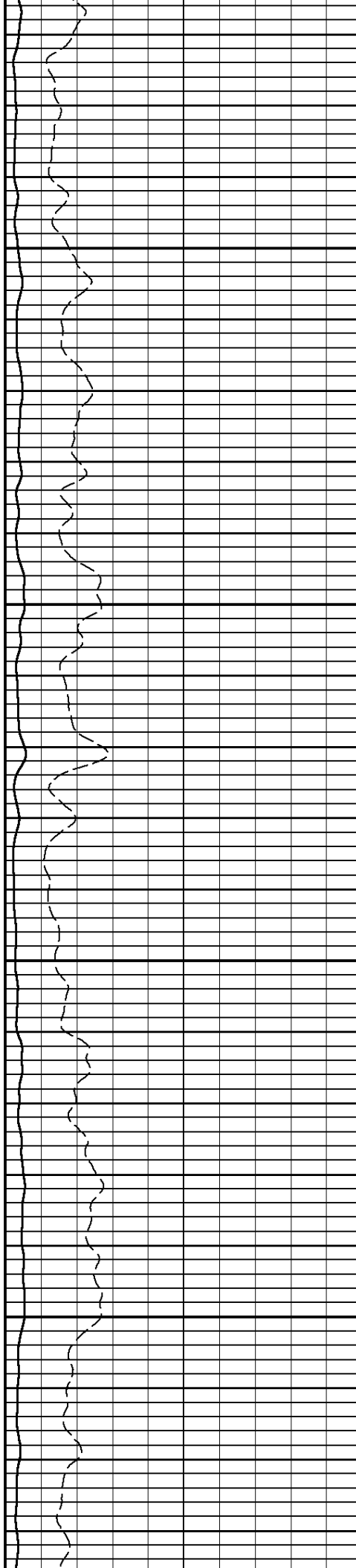
6300



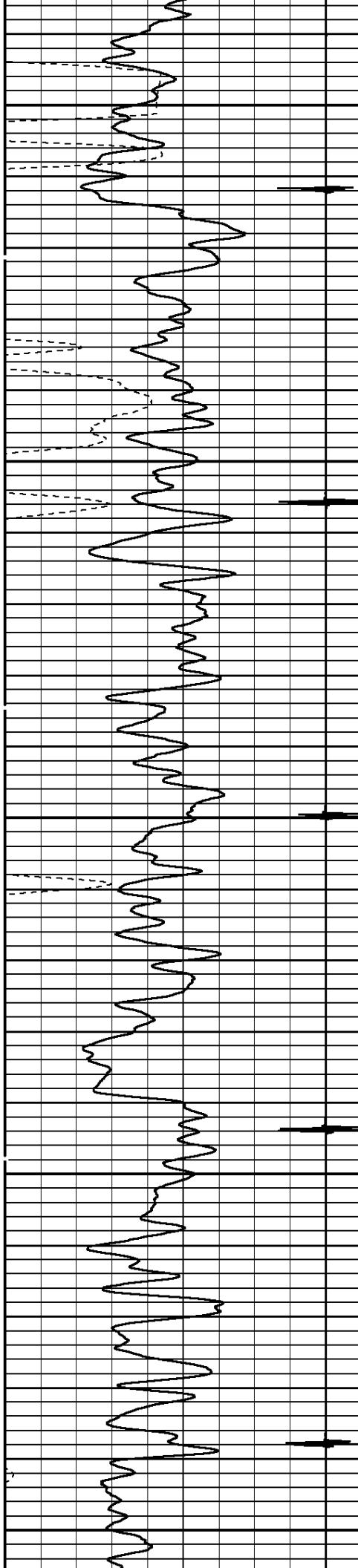


6400

6500

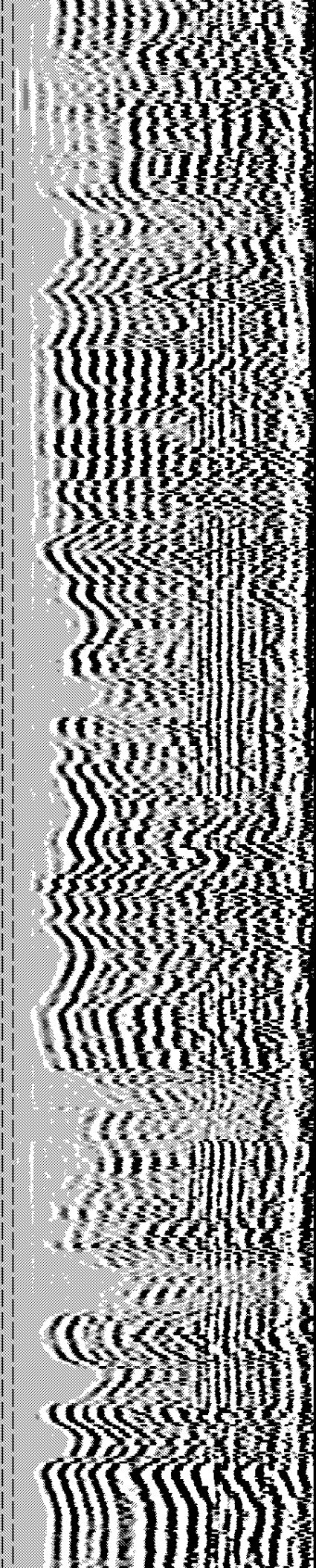
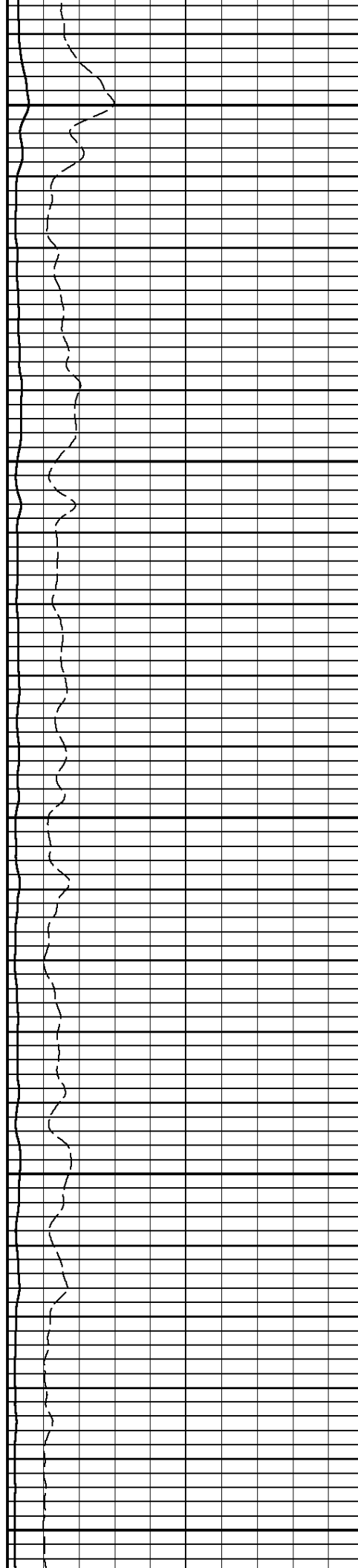


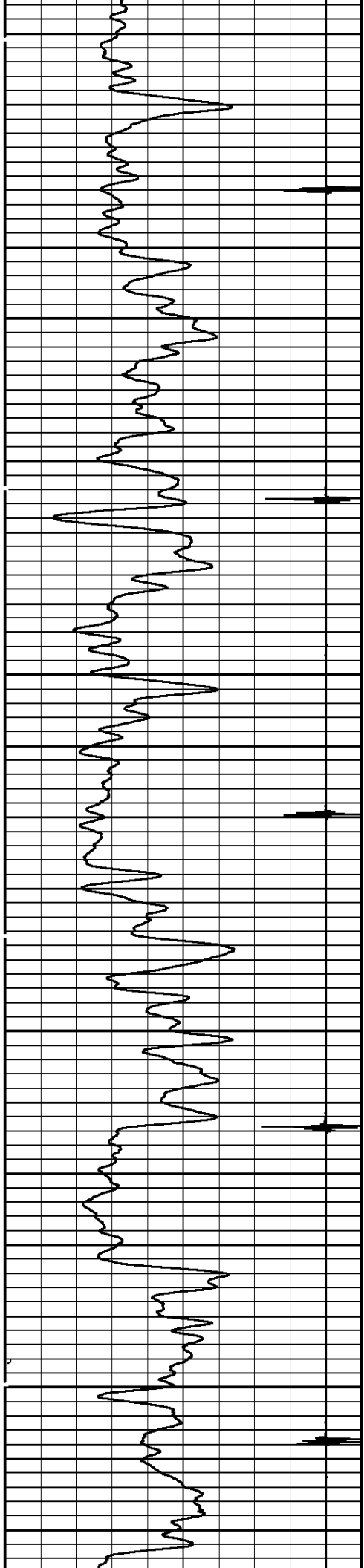




6600

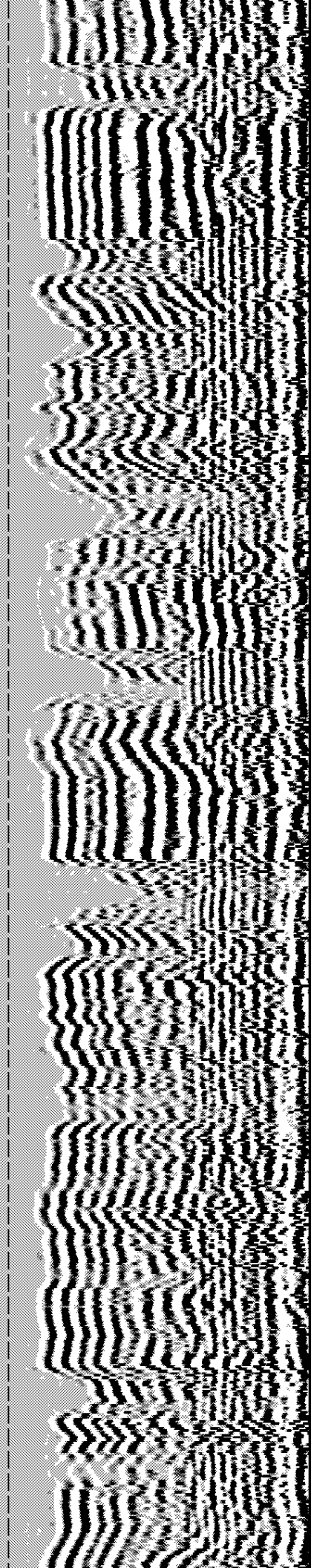
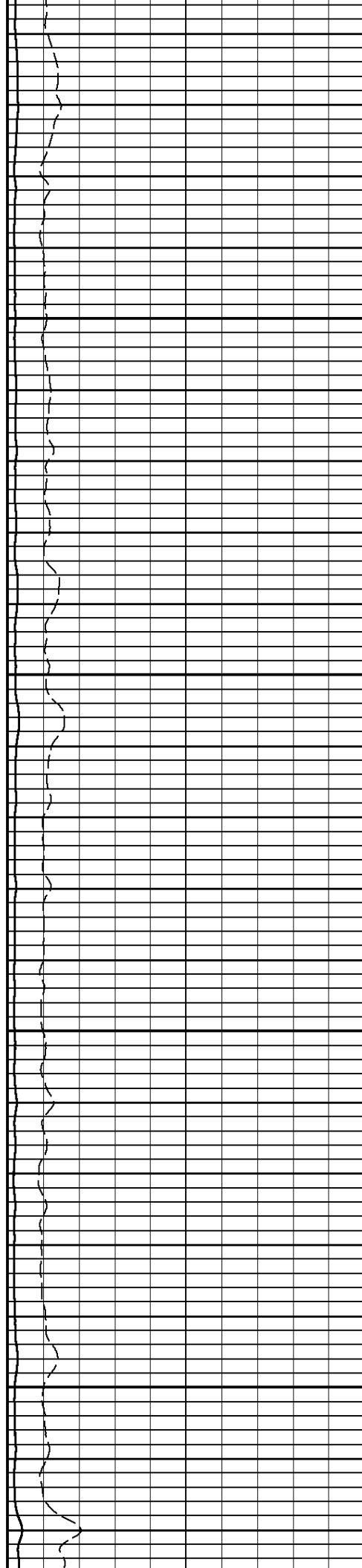
6700



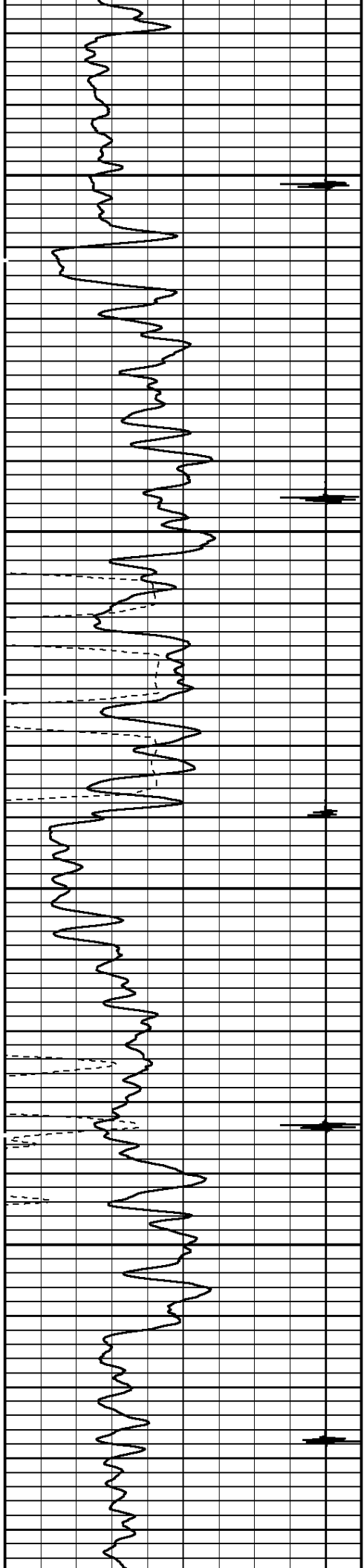


6800

6900

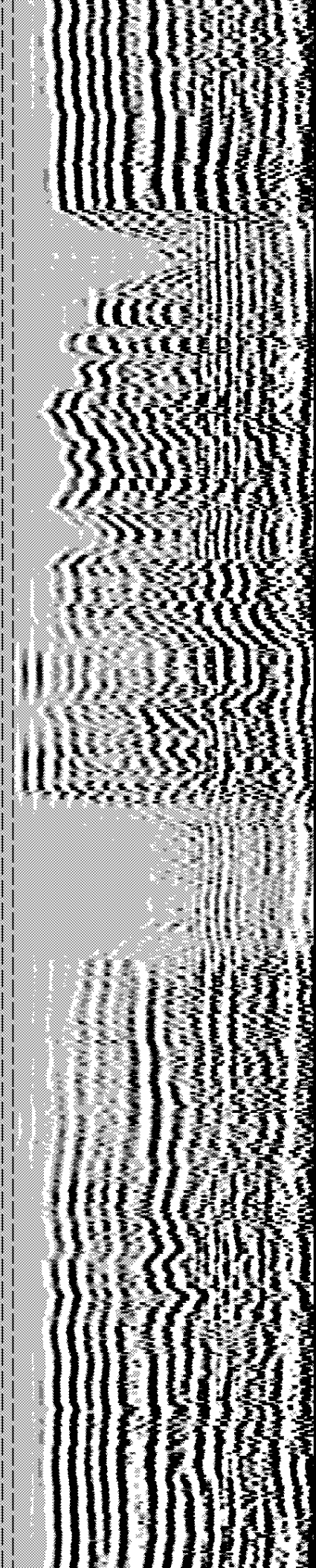
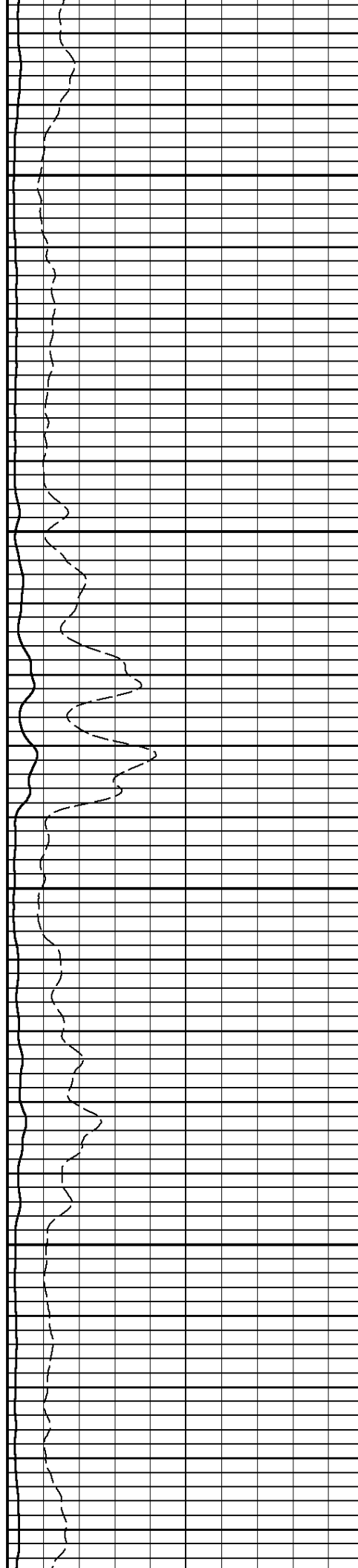


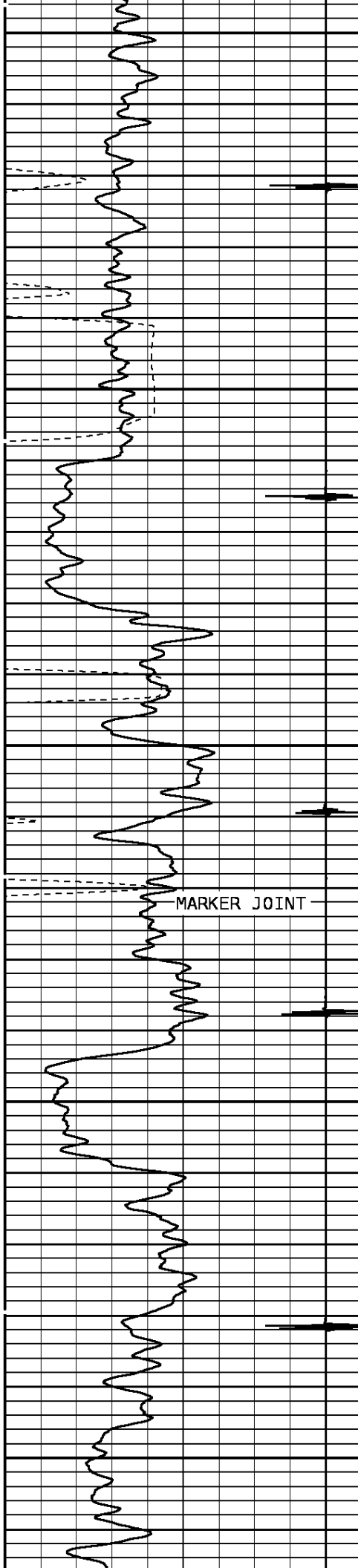




7000

7100

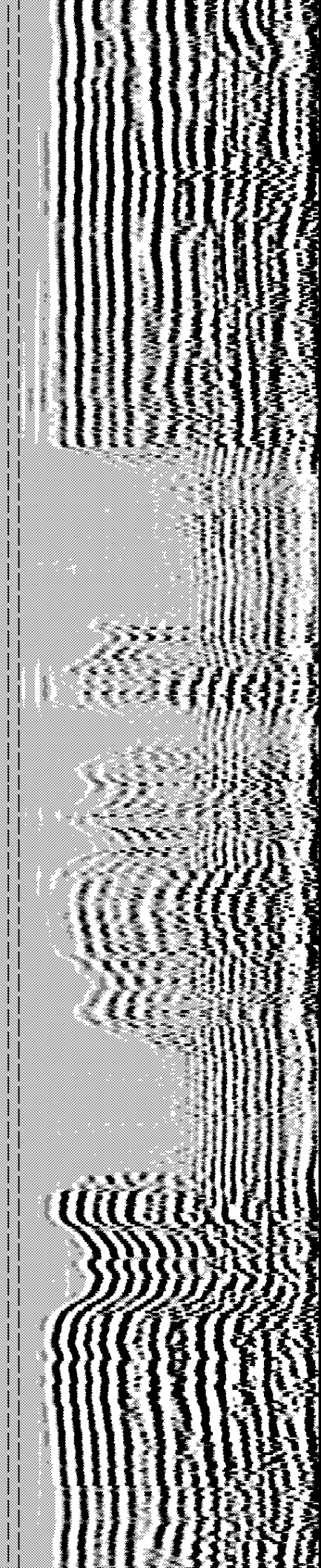
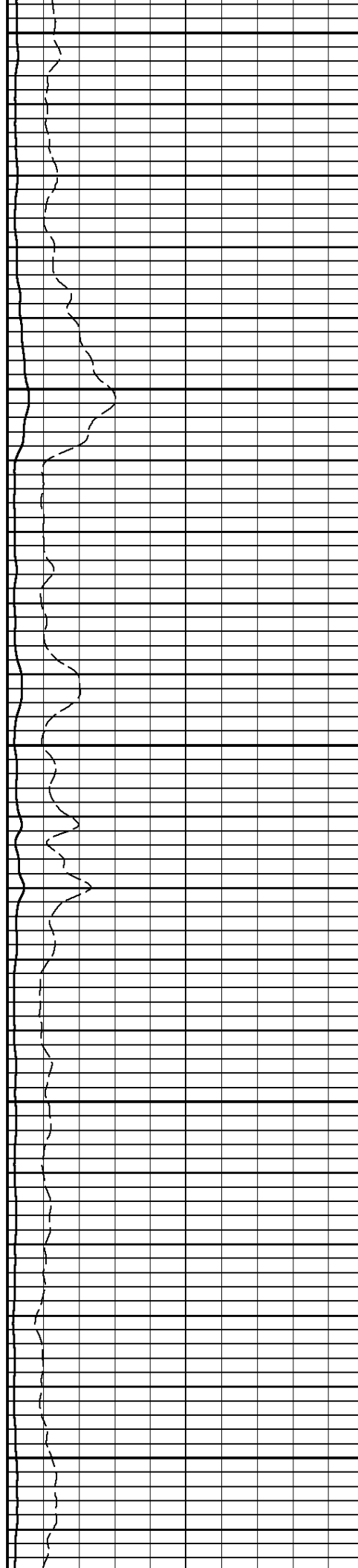


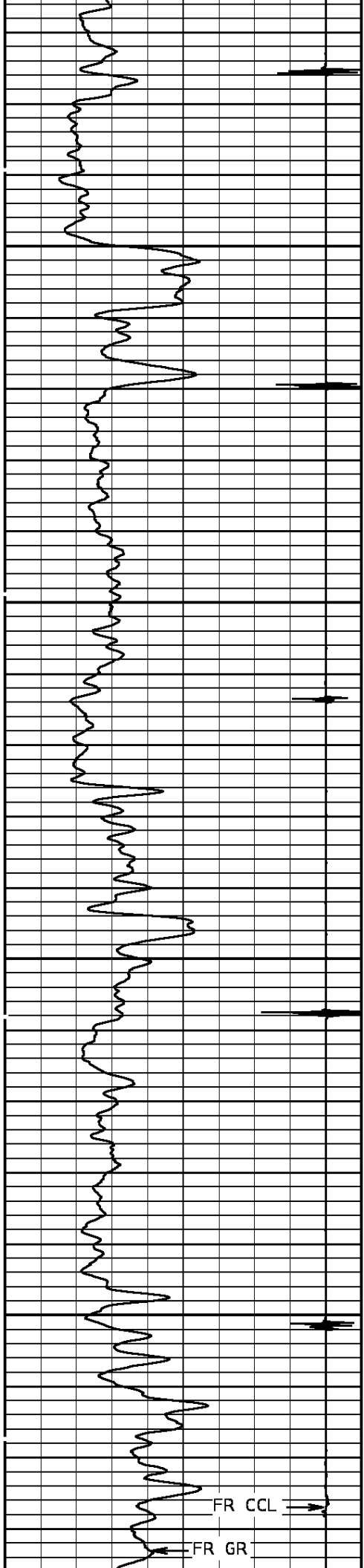


7200

7300

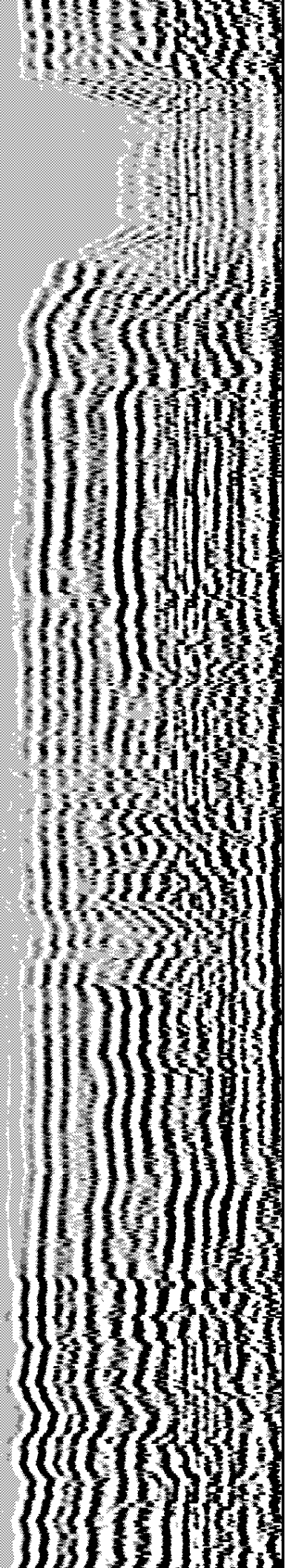
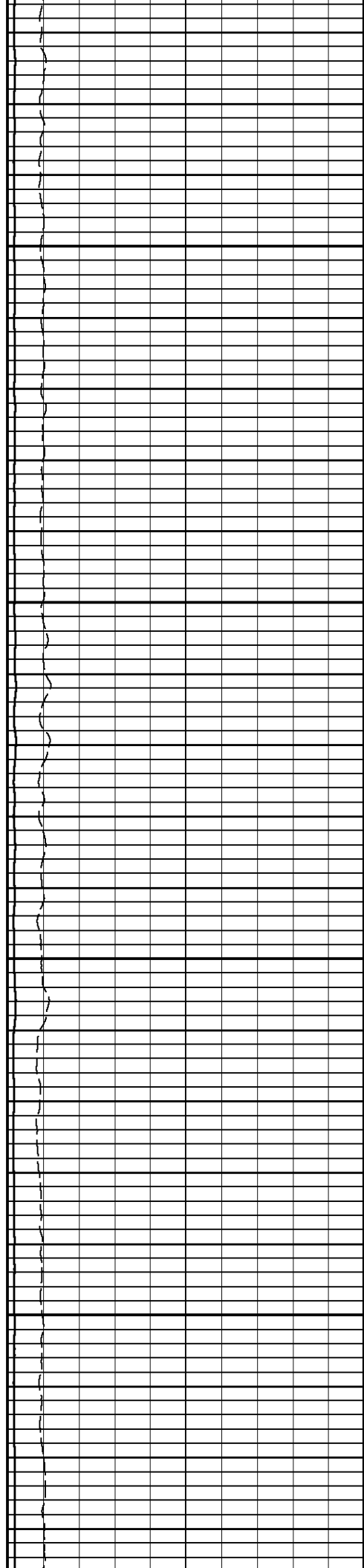
7400

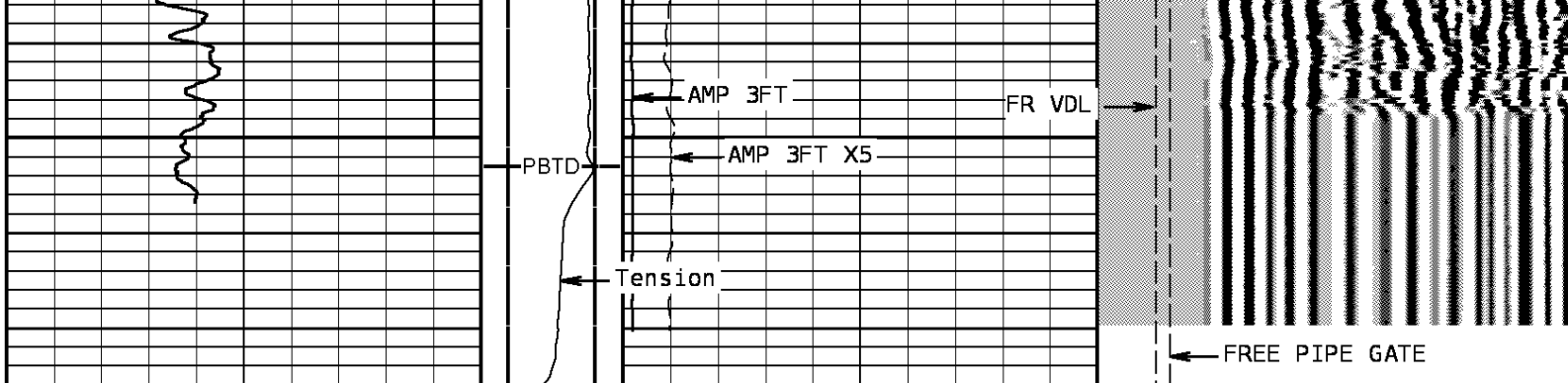




7500

7600





TRAVEL TIME 3FT			Tension		AMPLITUDE 3FT		VARIABLE DENSITY 5FT			
310	Microseconds	210			0	Millivolts	100	200	Microseconds	1200
Gamma Ray					AMPLITUDE 3FT X5		FREE PIPE GATE			
0	API	150			0	Millivolts	20	200	Microseconds	1200
Collar Locator							FREE PIPE GATE			
-8000	Millivolts	880						200	Microseconds	1200

START DEPTH: **7676.1**    DIRECTION: **UP**    DATE: **12/23/2008**    TIME: **23:37**    MODE: **ORIGINAL**

**153115 CBLMAINF**

**MAIN PASS**

DEPTH SCALE: **5":100'**    VERSION: **80214133R"**

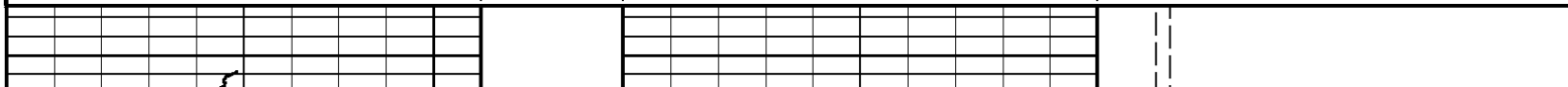
DEPTH SCALE: **5":100'**    VERSION: **80214133R"**

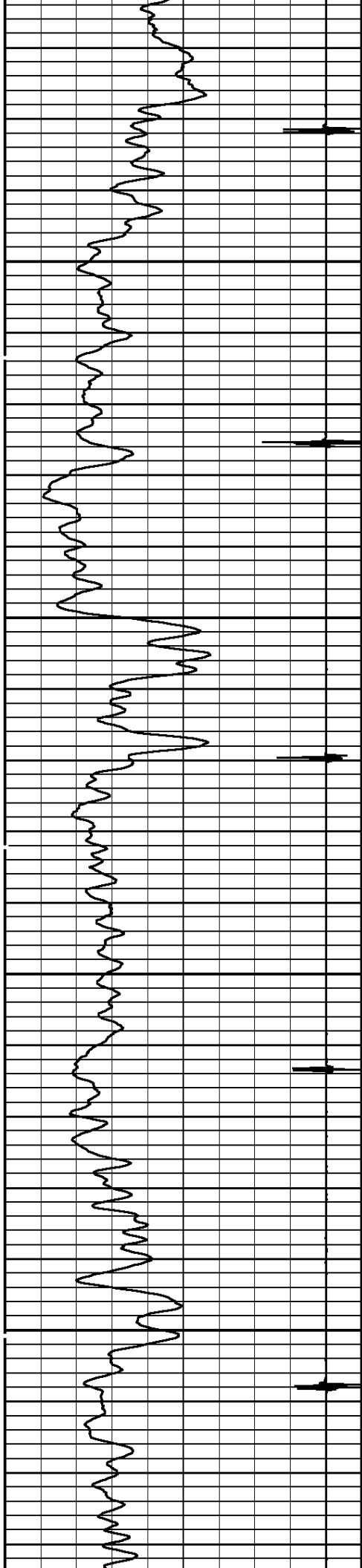
**REPEAT PASS**

**153115 CBLREPEATF**

FINISH DEPTH: **7380.9** Feet    DIRECTION: **UP**    DATE: **12/23/2008**    TIME: **23:47**    MODE: **ORIGINAL**

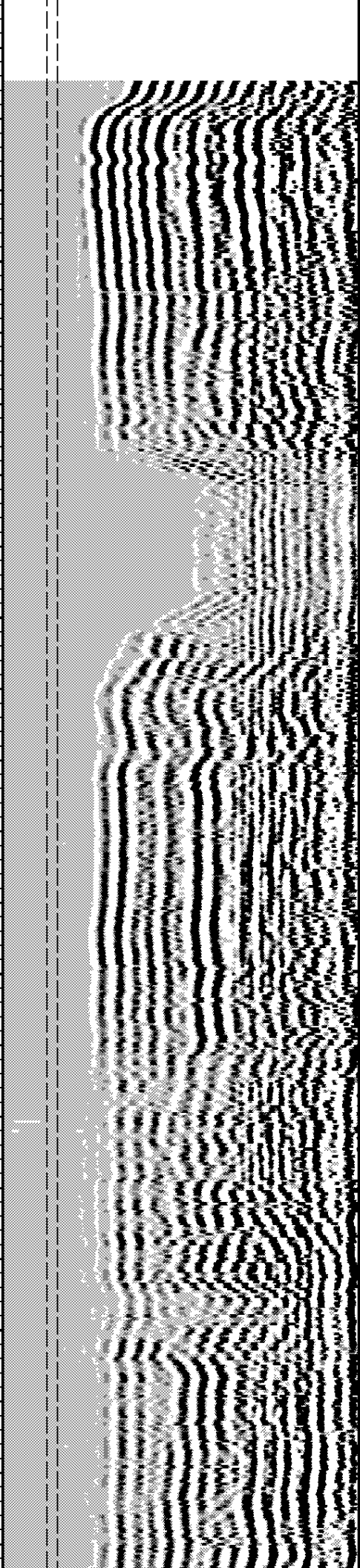
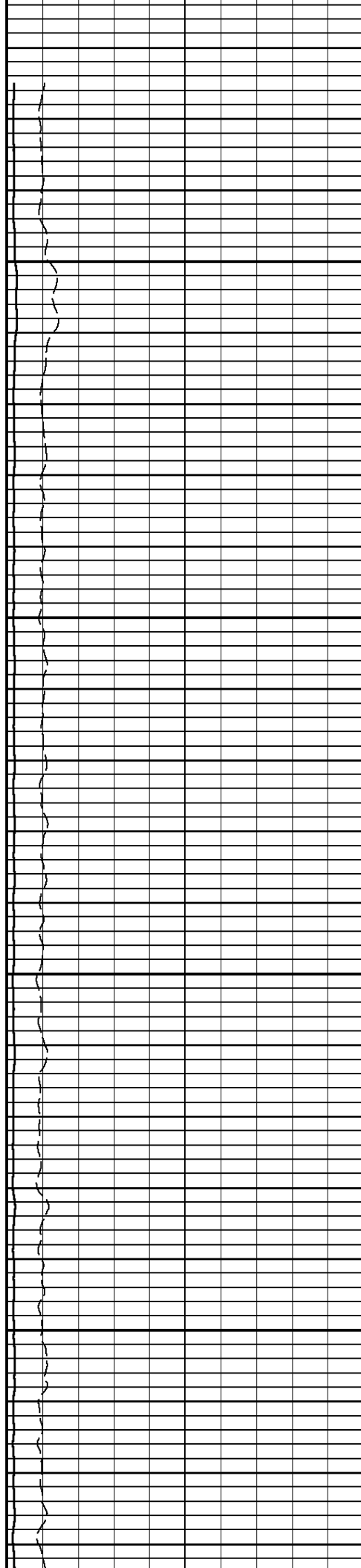
Collar Locator						FREE PIPE GATE		
-8000	Millivolts	880				200	Microseconds	1200
Gamma Ray						FREE PIPE GATE		
0	API	150	0	Millivolts	20	200	Microseconds	1200
TRAVEL TIME 3FT			Tension	AMPLITUDE 3FT		VARIABLE DENSITY 5FT		
310	Microseconds	210	0 2400	0	Millivolts 100	200	Microseconds	1200

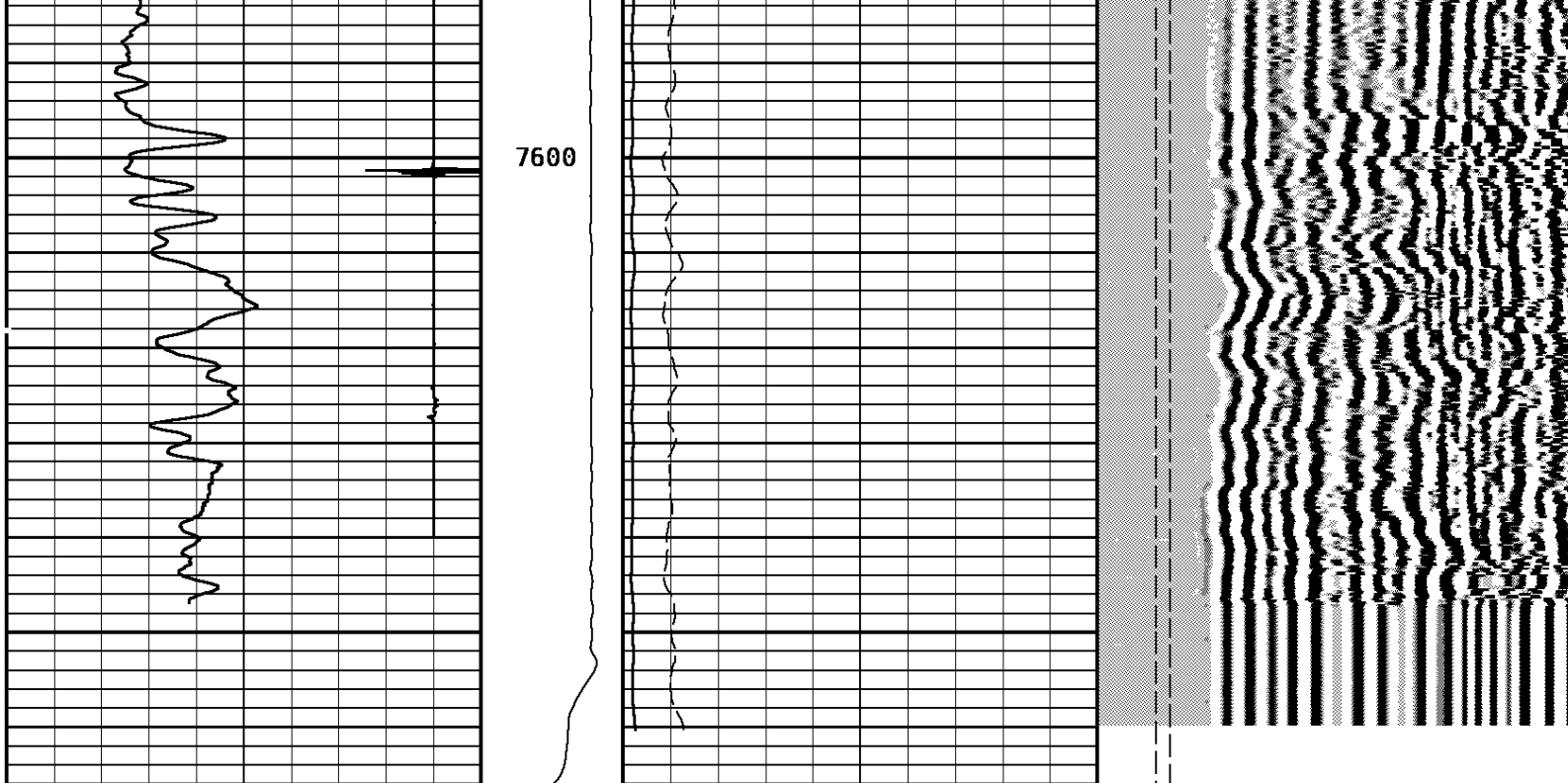




7400

7500





TRAVEL TIME 3FT			Tension	AMPLITUDE 3FT			VARIABLE DENSITY 5FT		
310	Microseconds	210		0	Millivolts	100	200	Microseconds	1200
Gamma Ray				AMPLITUDE 3FT X5			FREE PIPE GATE		
0	API	150		0	Millivolts	20	200	Microseconds	1200
Collar Locator							FREE PIPE GATE		
-8000	Millivolts	880					200	Microseconds	1200

START DEPTH: <b>7666.2</b> DIRECTION: <b>UP</b> DATE: <b>12/23/2008</b> TIME: <b>23:47</b> MODE: <b>ORIGINAL</b> <b>153115 CBLREPEATF</b>									
<b>REPEAT PASS</b>									
DEPTH SCALE: <b>5":100'</b>					VERSION: <b>80214133R"</b>				

12/21/08		22:47		1164.7 F		Ver 80214133R		Job 153112	
Sector Bond After Calibration									
Tool Type		SBT-AA			Serial No		28345		
Sensor		Description			Standard		Measured		

SENSOR	DESCRIPTION	STANDARD	REMARKS
AMP 3FT	ZERO	1.00	8.50
	PLUS	81.00	1302.85
AMP 5FT	ZERO	0.00	6.44
	PLUS	100.00	1765.65
1 SECTOR AMP	ZERO	5.00	251.91
	PLUS	95.00	1646.06
2 SECTOR AMP	ZERO	5.00	297.59
	PLUS	95.00	1681.33
3 SECTOR AMP	ZERO	5.00	45.98
	PLUS	95.00	1614.24
4 SECTOR AMP	ZERO	5.00	96.31
	PLUS	95.00	1308.63
5 SECTOR AMP	ZERO	5.00	59.61
	PLUS	95.00	1245.25
6 SECTOR AMP	ZERO	5.00	27.72
	PLUS	95.00	1163.45
7 SECTOR AMP	ZERO	5.00	154.25
	PLUS	95.00	1169.64
8 SECTOR AMP	ZERO	5.00	269.96
	PLUS	95.00	1126.40

### 1 7/16 Adapter Head

Weight 2.2 LB.  
Length 12 IN.  
Max. Diameter 1.44 IN.

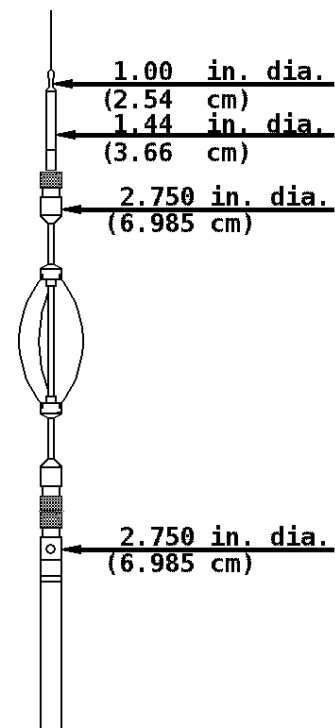
Total Stack Weight 223.0 LBS. in air  
Total Stack Length 27.83 FT.

### Slim Hole Centralizer

Weight 15 lbs  
Length 2.49 FT.  
Max. Diameter 2.750 IN.

### Collar Locator

Weight 39.8 LBS.  
Length 3.40 FT.  
Max. Diameter 2.75 IN.



Max. Diameter 2.75 IN.

### Slim Hole Gamma Ray

Weight 39.8 LBS.  
Length 4.71 FT  
Max. Diameter 2.750 IN.

### Slim Hole Centralizer

Weight 22 LBS.  
Length 3.08 FT.  
Max. Diameter 2.750 IN.

### Sector Bond

Weight 89.2 LBS.  
Length 10.32 FT.  
Max. Diameter 2.750 IN.

### Slim Hole Centralizer

Weight 15.0 LBS.  
Length 2.82 FT.  
Max. Diameter 2.750 IN.

CCL 23.57 FT.

2.750 in. dia.  
(6.985 cm)

GR 19.97 FT.

2.750 in. dia.  
(6.985 cm)

2.750 in. dia.  
(6.985 cm)

SBT/CBL Tx 8.75 FT.

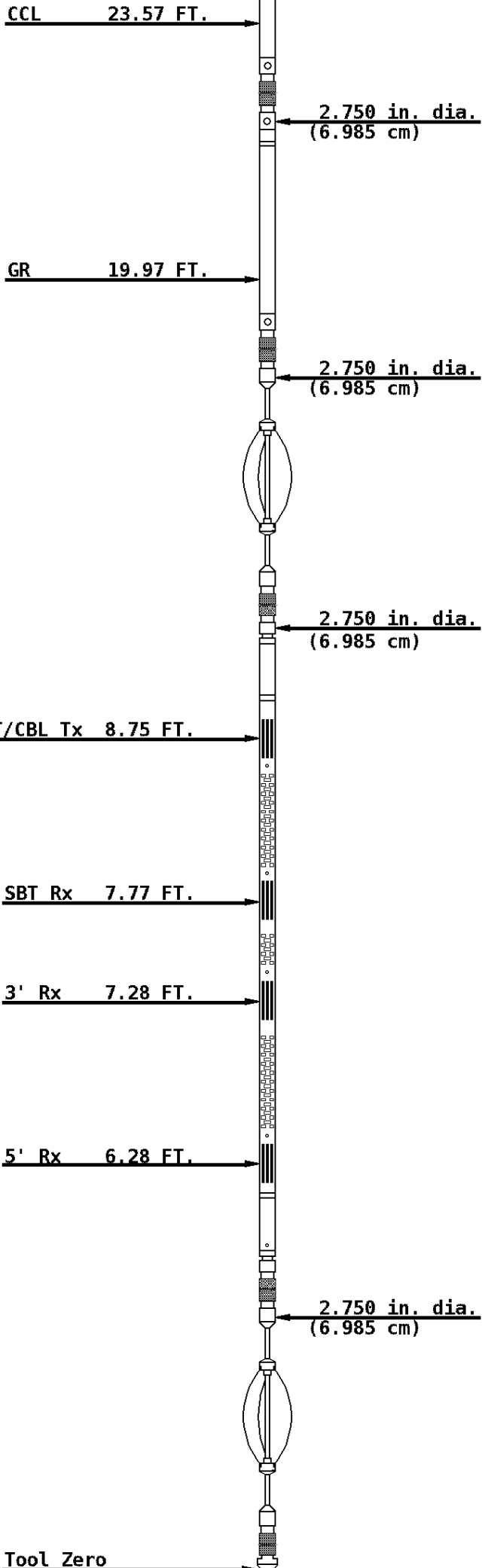
SBT Rx 7.77 FT.

3' Rx 7.28 FT.

5' Rx 6.28 FT.

2.750 in. dia.  
(6.985 cm)

Tool Zero





**COMPANY**    **BILL BARRETT CORPORATION**

**WELL**        **BRYNILDSON 23D-20-692**

**FIELD**      **MAMM CREEK**

**COUNTY**    **GARFIELD**                      **STATE**    **COLORADO**



**Weatherford®**