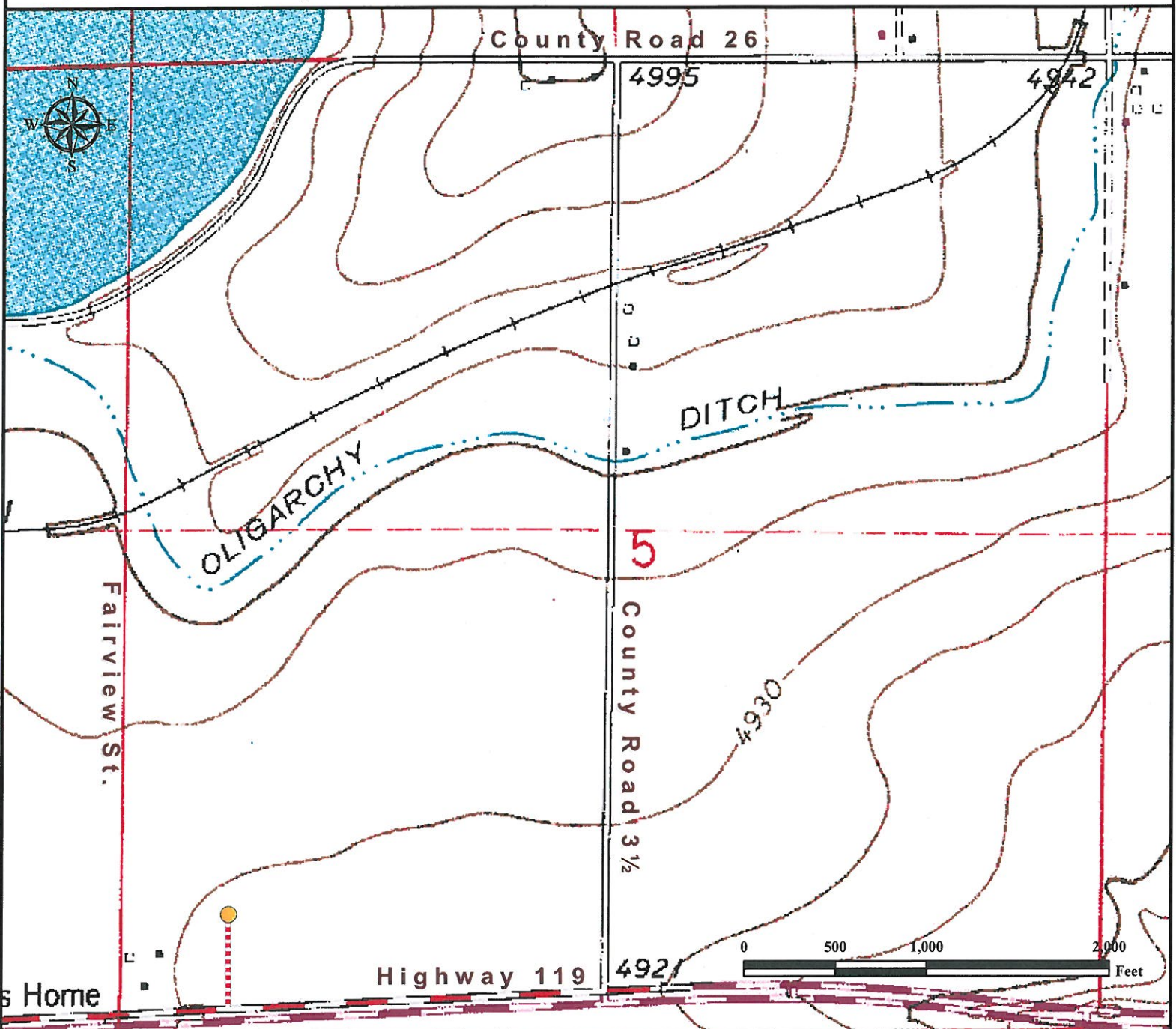


Access Road Map

MAY JON 5E #7

Multi Well Pad

SW¼ SW¼ SECTION 5, TOWNSHIP 2 NORTH, RANGE 68 WEST OF THE 6TH PRINCIPAL MERIDIAN



From Longmont, CO From the intersection of Highway 119 and East 3rd Avenue:

Proceed East on Highway 119 1.7 Miles.

Turn Left onto access road and continue 0.1 miles to proposed well location.

Total distance from Longmont, CO to well location is **1.8 Miles**.

Legend

● Proposed Well

----- Proposed Access Road

Reference Location

** All Measurements are Made from
Reference Well

MAY JON 5E #7 (NAD83) **

LAT: 40.16201° LONG: -105.03439°

Elevation: 4932 Feet

Use our resources to find yours!

www.petro-fs.com

(303) 928-7128

Field Date: 07/19/2011
Drafting Date: 07/26/2011
Drafter: DMM
Checked By: BHF

Data Sources:
- Topo courtesy of USGS

Prepared for:

SUNDANCE
energy

