

1625 Broadway  
Suite 2000  
Denver, CO 80202  
  
Tel: 303.228.4000  
Fax: 303.228.4280  
www.nobleenergyinc.com



August 19, 2011

Colorado Oil and Gas Conservation Commission  
The Chancery Building  
1120 Lincoln Street, Suite 801  
Denver, CO 80203

Attn: Mr. David Neslin, Director

RE: **Dietrich C07-18D**  
Codell/Niobrara/J Sand New Drill  
Township 4 North, Range 64 West, 6th P.M.  
Section 7: NW/4NE/4: 1275' FNL & 1372' FEL (Surface Location)  
Section 7: SE/4NW/4: 1320' FNL & 2260' FWL (Bottom Hole Location)  
Weld County, Colorado

Mr. Neslin:

Noble Energy, Inc. ("NEI") is planning to drill the captioned boundary well in accordance with the provisions of COGCC Rule 318A.e.

NEI's proposed wellbore spacing unit consists of the W/2NE/4, E/2NW/4, Sec. 7, T4N, R64W, creating a 160-acre wellbore spacing unit for the Codell/Niobrara formations and the N/2 of Section 7, T4N, R64W, creating a 320-acre wellbore spacing unit for the J Sand. NEI is not the only owner within the proposed wellbore spacing unit and as such provided notice to the remaining owner(s) within said proposed spacing unit as required under COGCC Rule 318A.e(6). Copies of the required notice letter(s) is/are on file at the NEI offices. The required twenty (20) day notice period has elapsed absent the receipt by NEI of an objection to said proposal by the owner(s) within the proposed spacing unit for this well.

Enclosed are copies of the following documents to assist you in your review and approval of NEI's proposed APD for the captioned well:

- Plat illustrating the proposed wellbore spacing unit and number of Codell/Niobrara/J Sand wells located within the existing 160-acre governmental quarter section (NW/4) to be less than eight (8) in accordance with COGCC Rule 318A.f.
- Plat illustrating proposed wellbore spacing unit on existing location plat.

Thank you for your attention to the enclosed. NEI respectfully requests that the COGCC review the enclosed information and approve the Application for Permit to Drill the captioned well.

Sincerely,

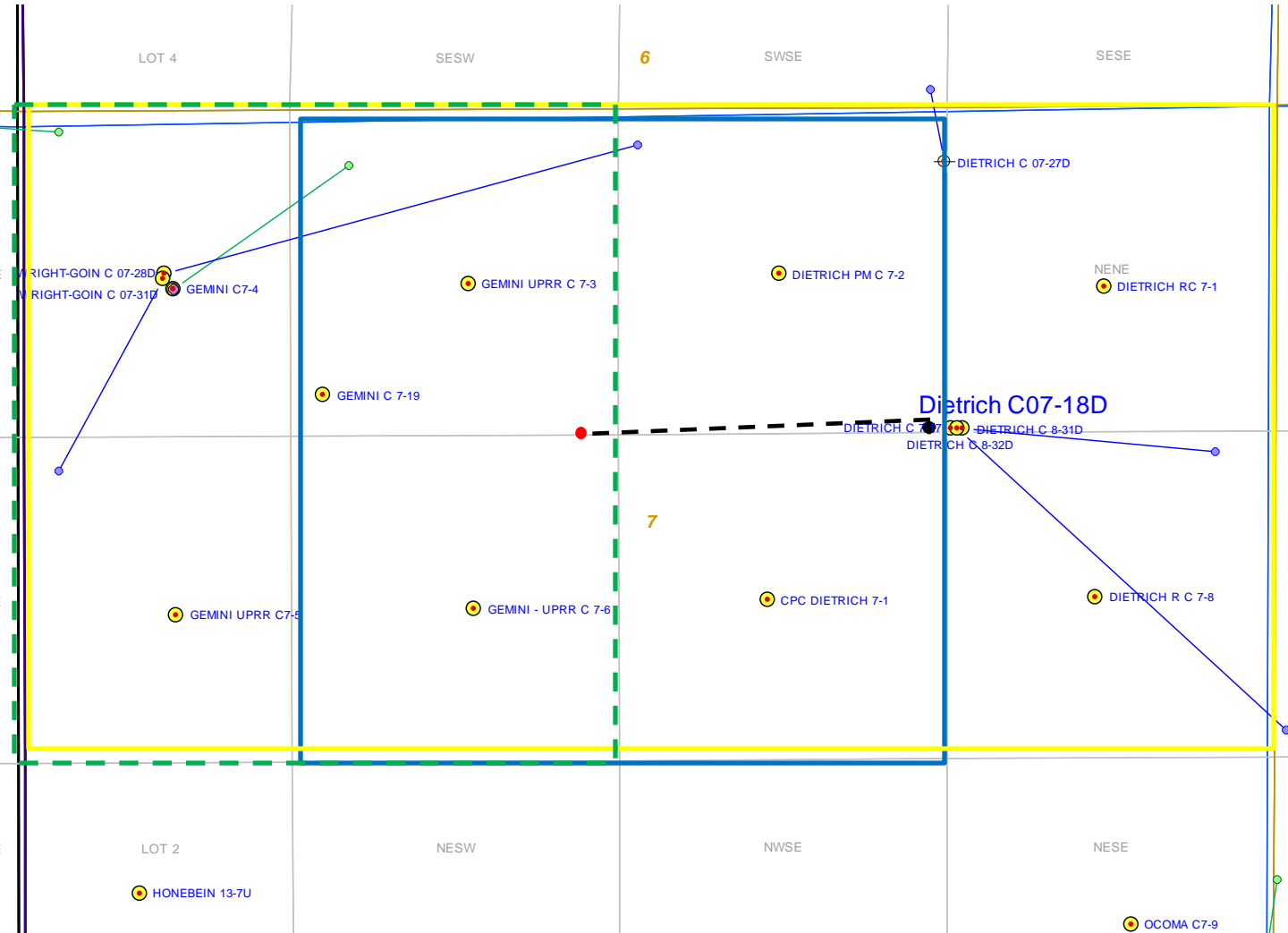
August 19, 2011

Justin Garrett  
Regulatory Specialist  
Noble Energy Inc.

# Dietrich C07-18D

## Noble Energy, Inc

### NE/4NW/4 Section 7, Township 4 North, Range 64 West



#### Legend



Proposed Codell/Niobrara 160 acre spacing unit



Bottom Hole Location



Bottom Hole Located NW/4, Sec. 7, T4N, R64W



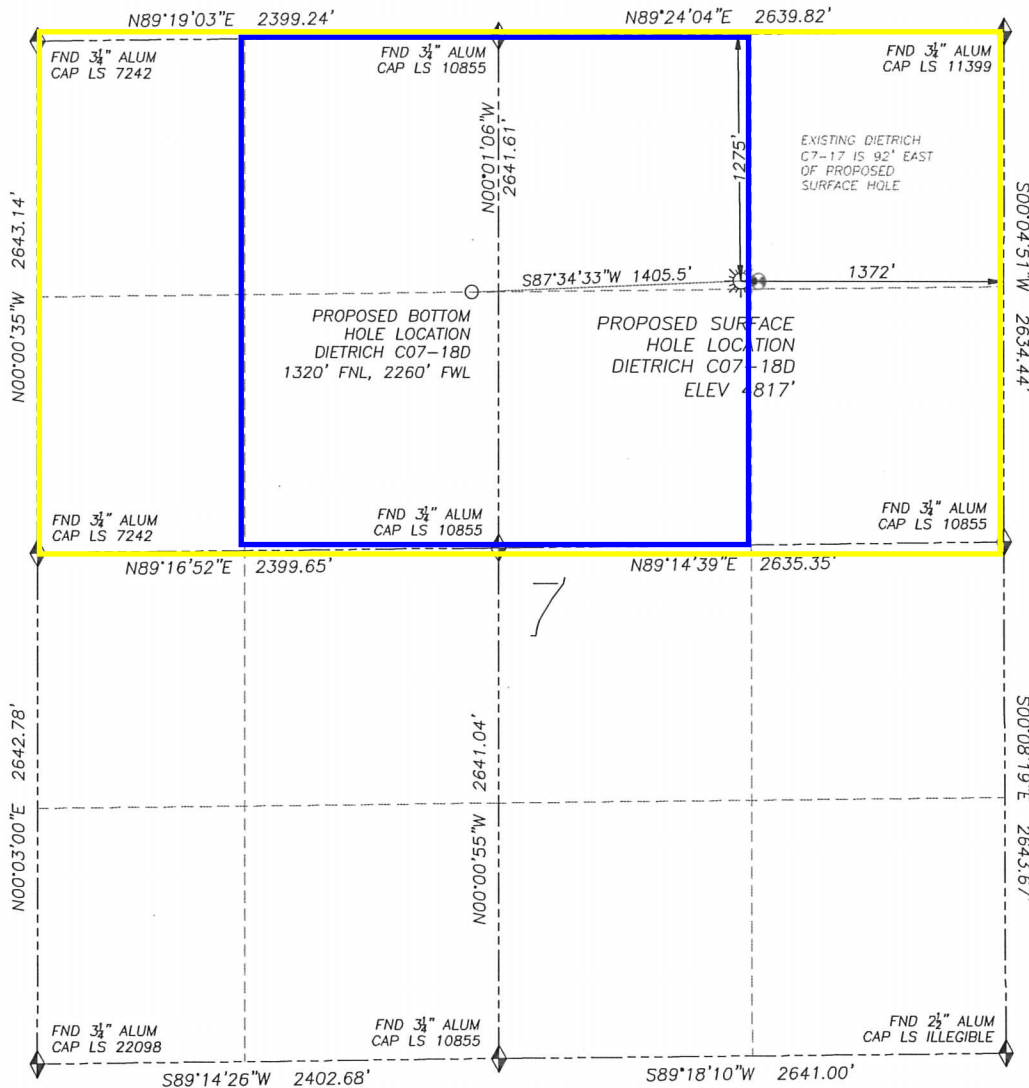
Proposed J Sand 320 acre spacing unit

**The governmental ¼ Section has less than 8 bottom hole wells producing from the Codell, Niobrara, and J-Sand formations.**

# WELL LOCATION CERTIFICATE

## DIETRICH C07-18D

SECTION 7, TOWNSHIP 4 NORTH, RANGE 64 WEST OF THE 6TH PRINCIPAL MERIDIAN



0 500 1000  
SCALE: 1" = 1000'

**LEGEND**

- ◆ FOUND MONUMENT AS DESCRIBED
- ☼ PROPOSED WELL
- ⊙ EXISTING WELL
- BOTTOM HOLE
- ⊘ ABANDONED WELL

**NAD 83 LATITUDE AND LONGITUDE****DIETRICH C07-18D SURFACE HOLE:**

LATITUDE: N40.33055°  
 LONGITUDE: W104.58890°  
 ELEVATION: 4817'  
 FOOTAGE: 1275' FNL, 1372' FEL  
 PDOP: 2.2  
 QTR/QTR: NW4/NE4  
 PROP LINE: 54'± EAST

**BOTTOM HOLE:**

LATITUDE: N40.33038°  
 LONGITUDE: W104.59394°  
 FOOTAGE: 1320' FNL, 2260' FWL

**NEAREST EXISTING WELL:**

DIETRICH 7-17 SURFACE HOLE  
 LATITUDE: N40.33054°  
 LONGITUDE: W104.58857°  
 ELEVATION: 4815'  
 92' EAST

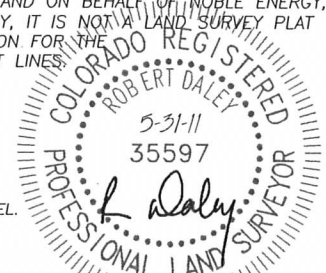
IN ACCORDANCE WITH A REQUEST FROM DANIEL MCCOY OF NOBLE ENERGY INC., DALEY LAND SURVEYING, INC. HAS DETERMINED THE SURFACE LOCATION OF THE DIETRICH C07-18D WELL TO BE 1275' FNL, 1372' FEL, AS MEASURED AT NINETY (90) DEGREES FROM THE SECTION LINES OF SECTION 7, TOWNSHIP 4 NORTH, RANGE 64 WEST OF THE 6TH PRINCIPAL MERIDIAN, WELD COUNTY, COLORADO. THE BOTTOM HOLE LOCATION, PROVIDED BY THE CLIENT, IS TO BE 1320' FNL, 2260' FWL.

I HEREBY CERTIFY THAT THIS WELL LOCATION CERTIFICATE WAS PREPARED BY ME OR UNDER MY DIRECT SUPERVISION, THAT THE WORK WAS COMPLETED ON 5/26/2011 FOR AND ON BEHALF OF NOBLE ENERGY, INC., AND THAT THIS MAP DOES NOT REPRESENT A BOUNDARY SURVEY, IT IS NOT A LAND SURVEY PLAT OR AN IMPROVEMENT SURVEY PLAT AND IT IS NOT TO BE RELIED UPON FOR THE ESTABLISHMENT OF FENCE, BUILDING OR OTHER FUTURE IMPROVEMENT LINES.

**NOTES:**

- 1) BEARINGS FOR THIS MAP ARE ASSUMED AND BASED UPON GPS OBSERVATIONS MADE BETWEEN MONUMENTS LOCATED AT THE NORTHEAST CORNER AND EAST QUARTER CORNER OF SECTION 7, T.4N., R.64W.
- 2) HORIZONTAL DATUM IS NAD83.
- 3) VERTICAL DATUM IS NAVD88. ELEVATIONS ARE DERIVED FROM GPS OBSERVATIONS PROCESSED THROUGH OPUS, UTILIZING THE GEOID03 MODEL.
- 4) SEE LOCATION DRAWING FOR VISIBLE IMPROVEMENTS WITHIN 600' OF PROPOSED SURFACE HOLE LOCATION.
- 5) SURFACE USE: PASTURE.

NOTICE: According to Colorado law you MUST commence any legal action based upon any defect in this W.L.C. within three years after you first discover such defect. In no event may any action based upon any such defect in this W.L.C. be commenced more than ten years from the date of the certification shown herein.



FOR AND ON BEHALF OF  
 DALEY LAND SURVEYING INC.,  
 Robert Daley, PLS 35597