

ENSIGN

Directional

Well Name: Booth USX EE25-03D

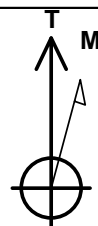
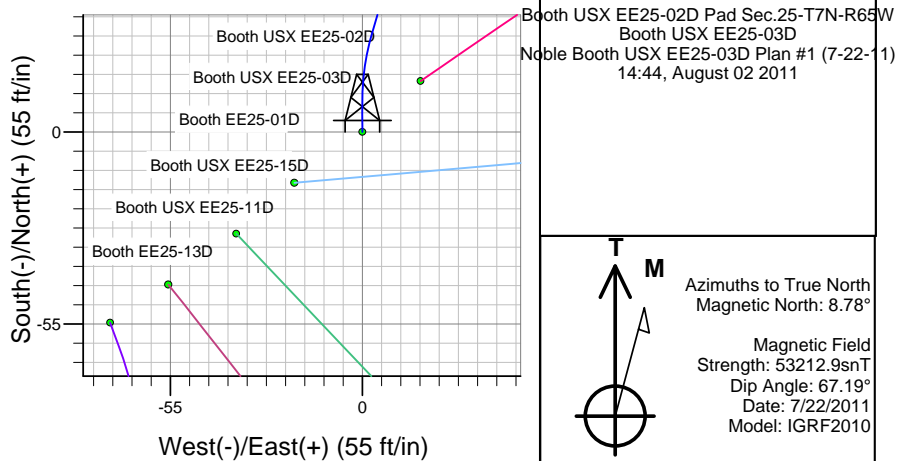
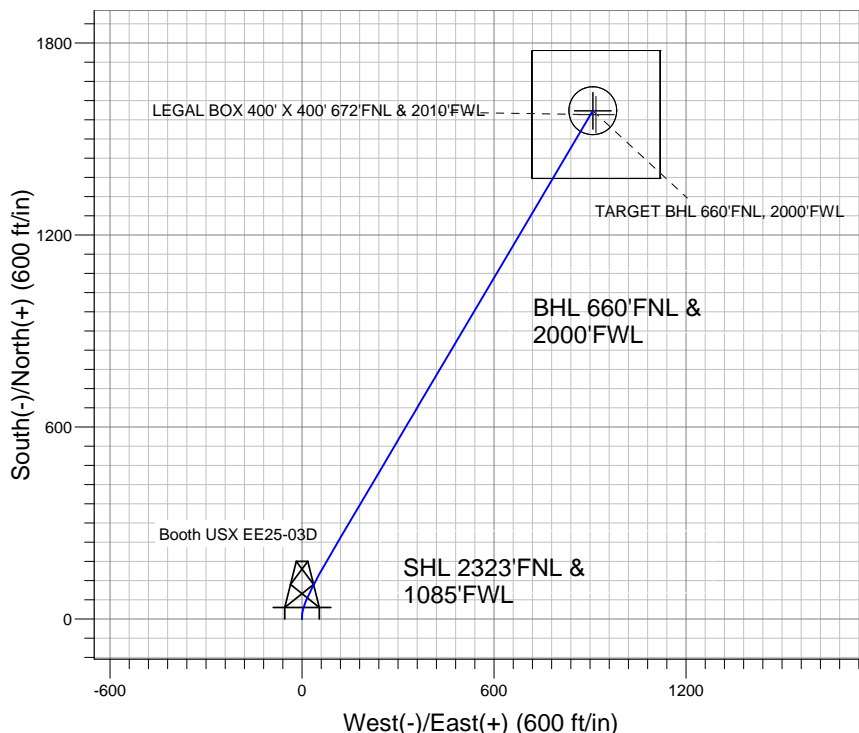
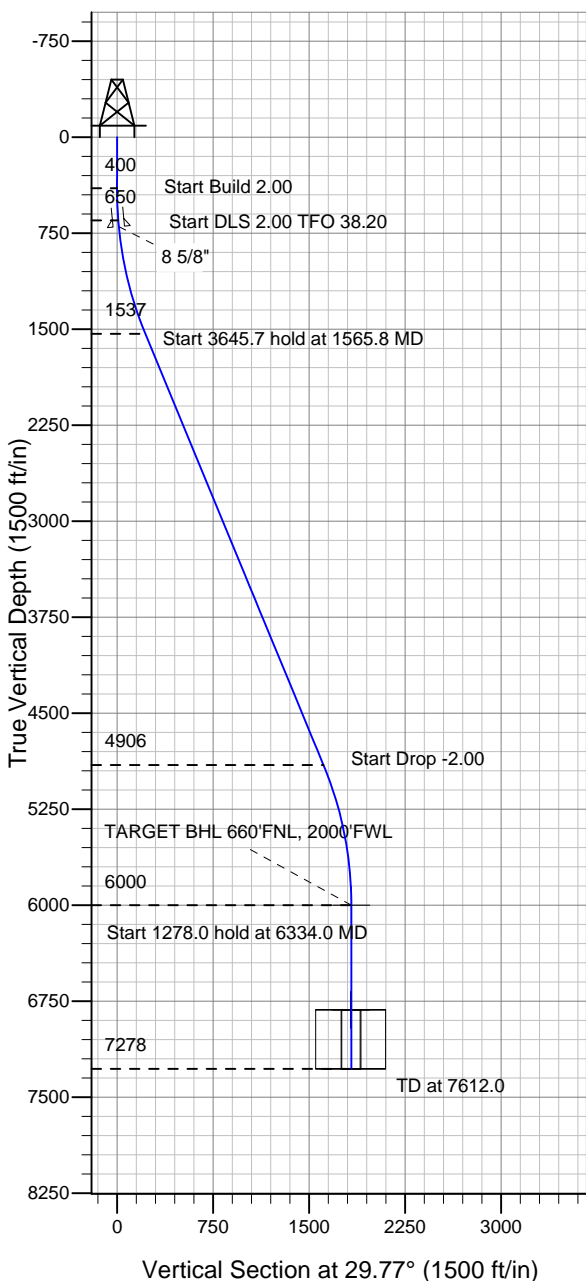
Surface Location: Booth USX EE25-02D Pad Sec.25-T7N-R65W
North American Datum 1983 , US State Plane 1983 , Colorado Northern Zone

Ground Elevation: 4820.0

+N/-S	+E/-W	Northing	Easting	Latitude	Longitude	Slot
0.0	0.0	1442862.15	3245494.87	40.545700	-104.616630	

Original Well Elev WELL @ 4833.0ft (Original Well Elev)

NOBLE ENERGY INC WELD COUNTY CO



Azimuths to True North
Magnetic North: 8.78°

Magnetic Field
Strength: 53212.9snT
Dip Angle: 67.19°
Date: 7/22/2011
Model: IGRF2010

WELLBORE TARGET DETAILS (LAT/LONG)

Name	TVD	+N/-S	+E/-W	Latitude	Longitude	Shape
TARGET BHL 660'FNL, 2000'FWL	6000.0	1588.5	908.7	40.550060	-104.613360	Point
LEGAL BOX 400' X 400' 672'FNL & 2010'FWL	6818.0	1576.5	918.7	40.550027	-104.613324	Rectangle (Sides: L400.0 W400.0)
TARGET CIRCLE 660'FNL & 2000'FWL	6818.0	1588.5	908.7	40.550060	-104.613360	Circle (Radius: 75.0)

SECTION DETAILS

Sec	MD	Inc	Azi	TVD	+N/-S	+E/-W	DLeg	TFace	VSec	Target
1	0.0	0.00	0.00	0.0	0.0	0.0	0.00	0.00	0.0	
2	400.0	0.00	0.00	400.0	0.0	0.0	0.00	0.00	0.0	
3	650.0	5.00	0.00	649.7	10.9	0.0	2.00	0.00	9.5	
4	1565.8	22.45	30.59	1536.6	203.0	89.8	2.00	38.20	220.8	
5	5211.5	22.45	30.59	4905.9	1401.5	798.2	0.00	0.00	1612.9	
6	6334.0	0.00	0.00	6000.0	1588.5	908.7	2.00	180.00	1830.0	TARGET BHL 660'FNL, 2000'FWL
7	7612.0	0.00	0.00	7278.0	1588.5	908.7	0.00	0.00	1830.0	