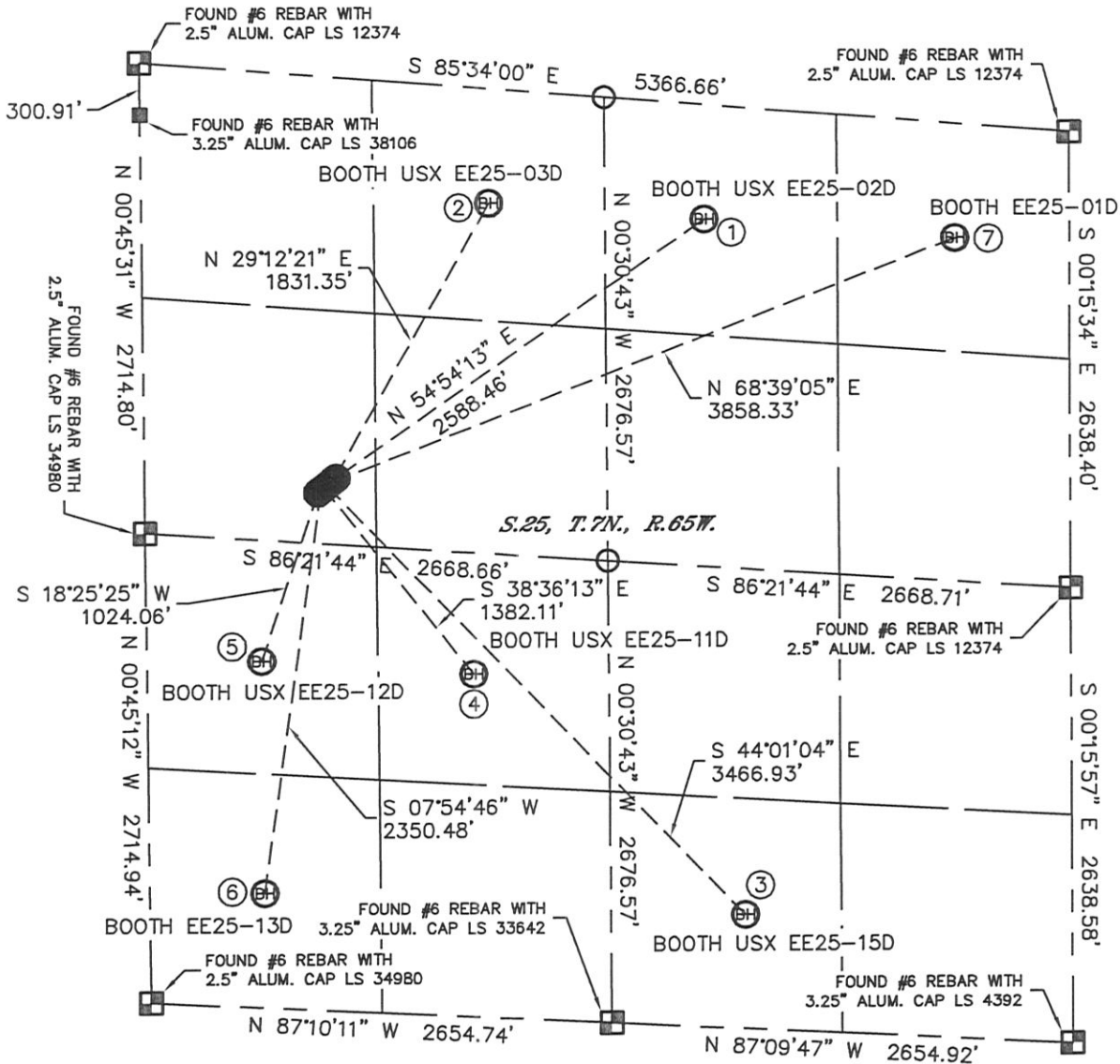


MULTI-WELL PLAN

BOOTH USX EE25-02D, 03D, 11D, 12D, 15D
BOOTH EE25-01D, 13D

THIS MAP DOES NOT REPRESENT A BOUNDARY SURVEY

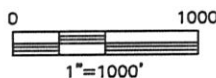
SECTION: 25
TOWNSHIP: 7N
RANGE: 65W



- | | | | | |
|---|---|---|--|---|
| ①
-BOTTOM HOLE-
BOOTH USX EE25-02D
660' FNL
2100' FWL
LAT-40.54976°N
LONG-104.60890°W | ②
-BOTTOM HOLE-
BOOTH USX EE25-03D
660' FNL
2000' FWL
LAT-40.55006°N
LONG-104.61336°W | ③
-BOTTOM HOLE-
BOOTH USX EE25-15D
660' FSL
1880' FWL
LAT-40.53871°N
LONG-104.60819°W | ④
-BOTTOM HOLE-
BOOTH USX EE25-11D
1980' FSL
1880' FWL
LAT-40.54260°N
LONG-104.61376°W | ⑤
-BOTTOM HOLE-
BOOTH USX EE25-12D
2000' FSL
660' FWL
LAT-40.54285°N
LONG-104.61815°W |
| ⑥
-BOTTOM HOLE-
BOOTH EE25-13D
660' FSL
660' FWL
LAT-40.53917°N
LONG-104.61814°W | ⑦
-BOTTOM HOLE-
BOOTH EE25-01D
660' FNL
660' FWL
LAT-40.54942°N
LONG-104.60372°W | | | |

LEGEND

- = ALIQUOT MONUMENT AS DESCRIBED
- = CALCULATED POSITION

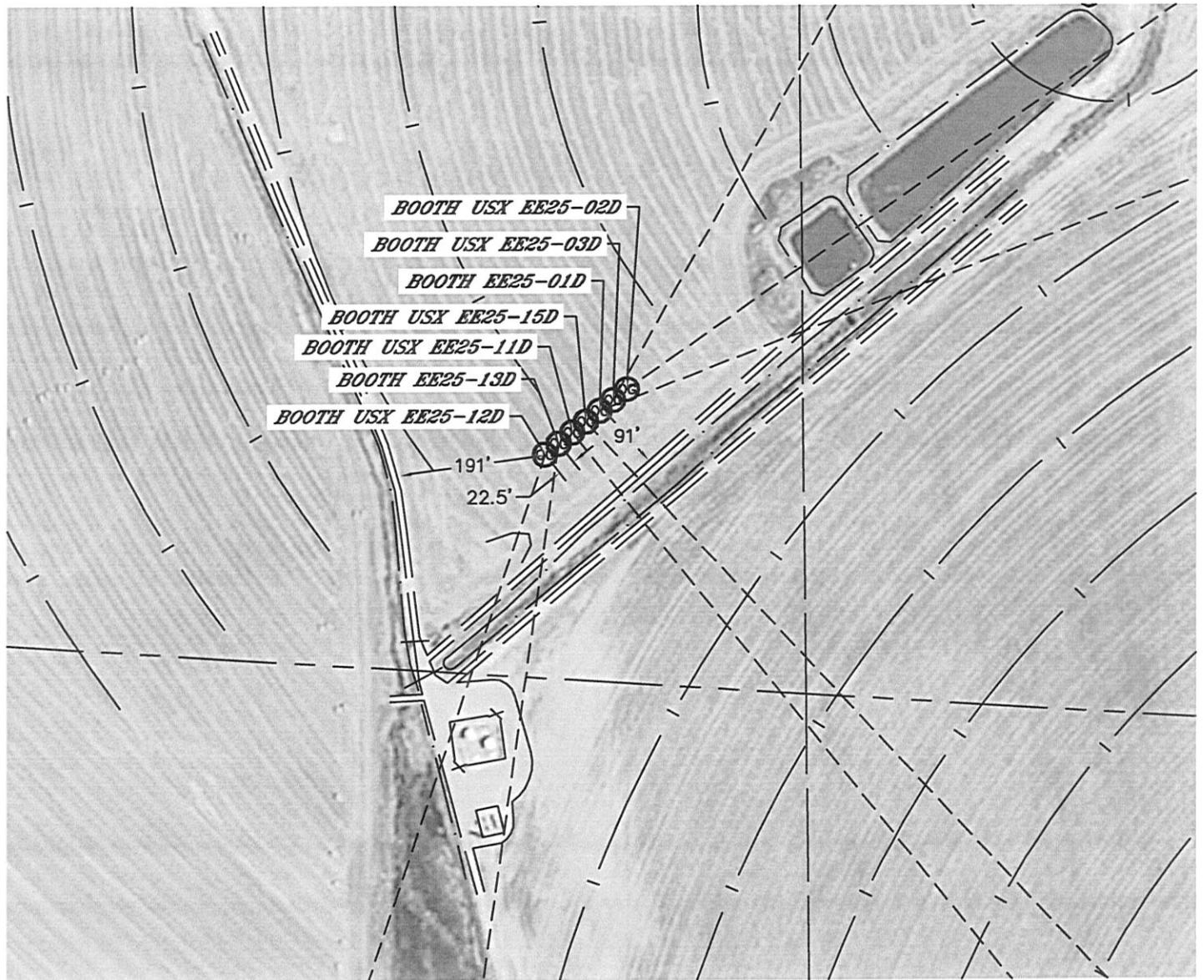


Lat40°, Inc. 1635 Foxtrail Drive, Suite 325 Loveland, CO 970-776-3321

MULTI-WELL PLAN

BOOTH USX EE25-02D, 03D, 11D, 12D, 15D
BOOTH EE25-01D, 13D

SECTION: 25
TOWNSHIP: 7N
RANGE: 65W



0 200
1"=200'