

ENSIGN

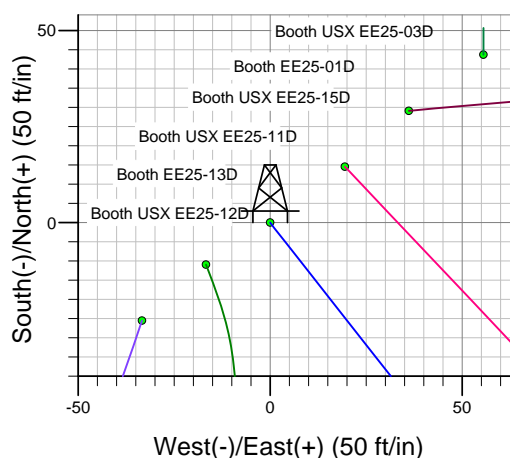
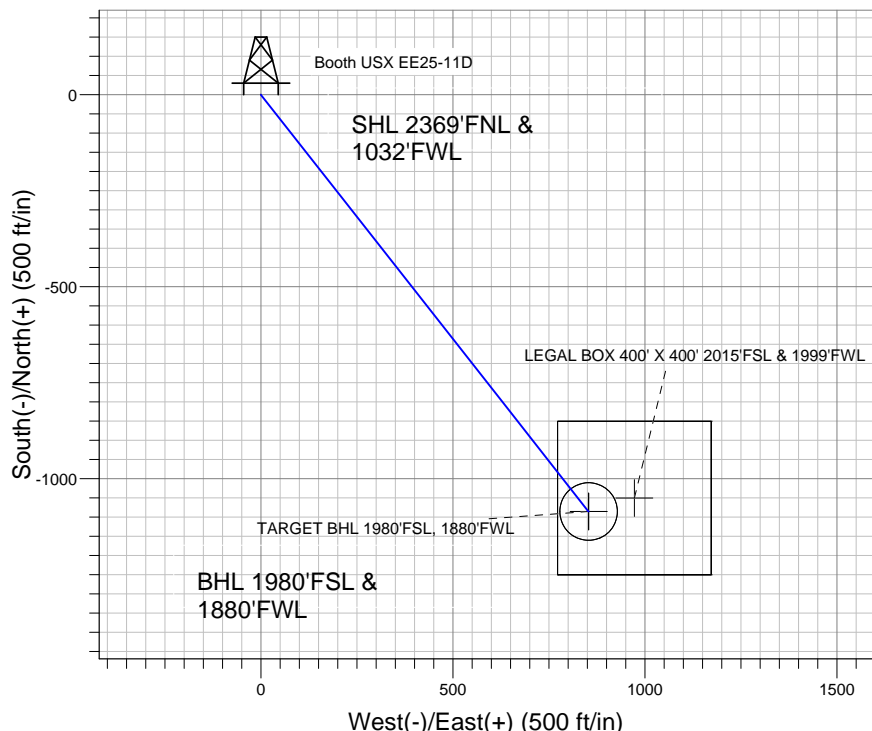
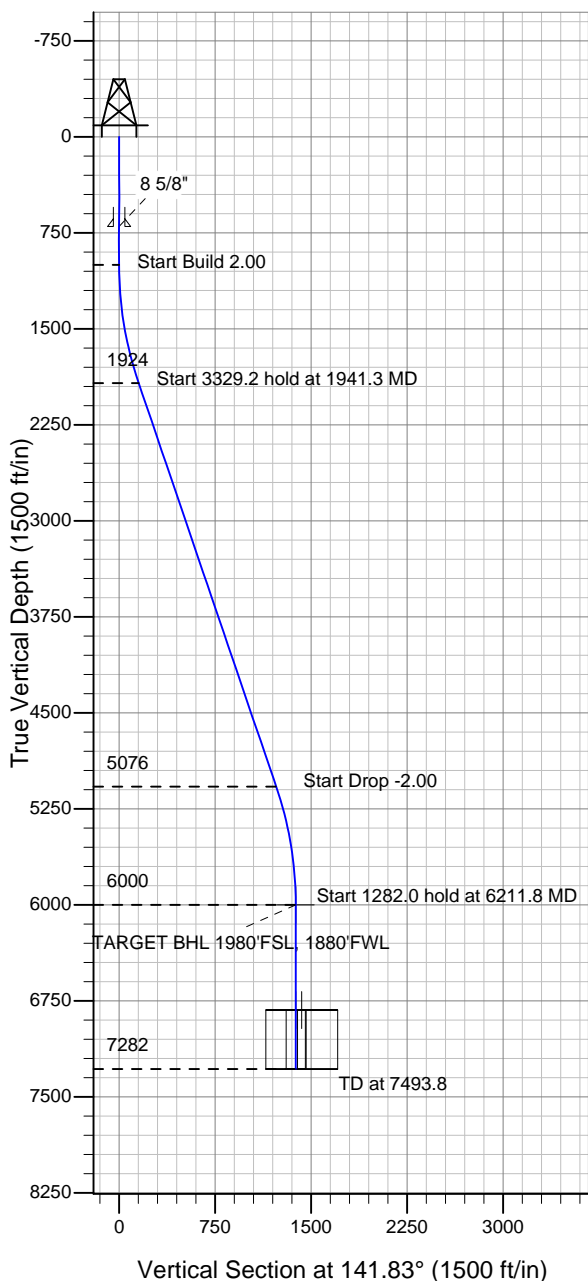
Directional

Well Name: Booth USX EE25-11D

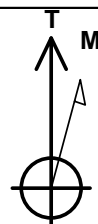
Surface Location: Booth USX EE25-02D Pad Sec.25-T7N-R65W
 North American Datum 1983 , US State Plane 1983 , Colorado Northern Zone
 Ground Elevation: 4819.0

+N/-S	+E/-W	Northing	Easting	Latitude	Longitude	Slot
0.0	0.0	1442817.88	3245439.72	40.545580	-104.616830	
Original Well Elev WELL @ 4832.0ft (Original Well Elev)						

NOBLE ENERGY INC WELD COUNTY CO



Booth USX EE25-02D Pad Sec.25-T7N-R65W
 Booth USX EE25-11D
 Noble Booth USX EE25-11D Plan #1 (7-22-11)
 16:15, August 02 2011



Azimuths to True North
 Magnetic North: 8.78°

Magnetic Field
 Strength: 53212.9snT
 Dip Angle: 67.19°
 Date: 7/22/2011
 Model: IGRF2010

WELLBORE TARGET DETAILS (LAT/LONG)

Name	TVD	+N/-S	+E/-W	Latitude	Longitude	Shape
TARGET BHL 1980'FSL, 1880'FWL	6000.0	-1085.7	853.3	40.542600	-104.613760	Point
LEGAL BOX 400' X 400' 2015'FSL & 1999'FWL	6822.0	-1050.7	972.3	40.542696	-104.613332	Rectangle (Sides: L400.0 W400.0)
TARGET CIRCLE 1980'FSL & 1880'FWL	6822.0	-1085.7	853.3	40.542600	-104.613760	Circle (Radius: 75.0)

SECTION DETAILS

Sec	MD	Inc	Azi	TVD	+N/-S	+E/-W	DLeg	TFace	VSec	Target
1	0.0	0.00	0.00	0.0	0.0	0.0	0.00	0.00	0.0	
2	1000.0	0.00	0.00	1000.0	0.0	0.0	0.00	0.00	0.0	
3	1941.3	18.83	141.83	1924.5	-120.5	94.7	2.00	141.83	153.3	
4	5270.5	18.83	141.83	5075.5	-965.2	758.6	0.00	0.00	1227.6	
5	6211.8	0.00	0.00	6000.0	-1085.7	853.3	2.00	180.00	1380.8	TARGET BHL 1980'FSL, 1880'FWL
6	7493.8	0.00	0.00	7282.0	-1085.7	853.3	0.00	0.00	1380.8	