

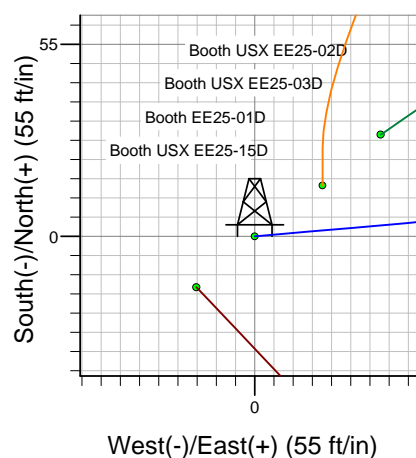
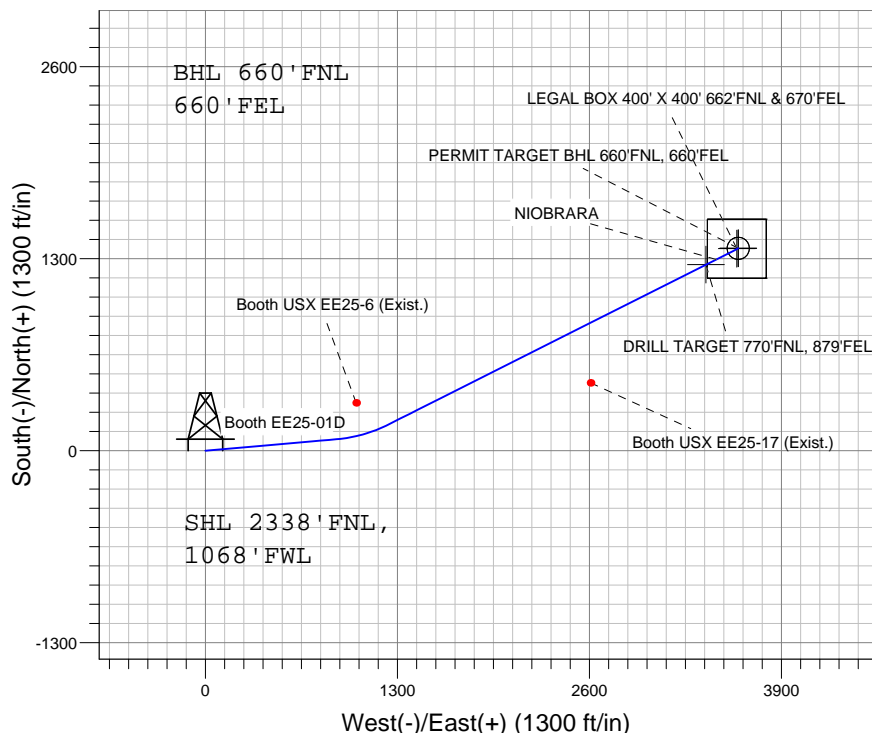
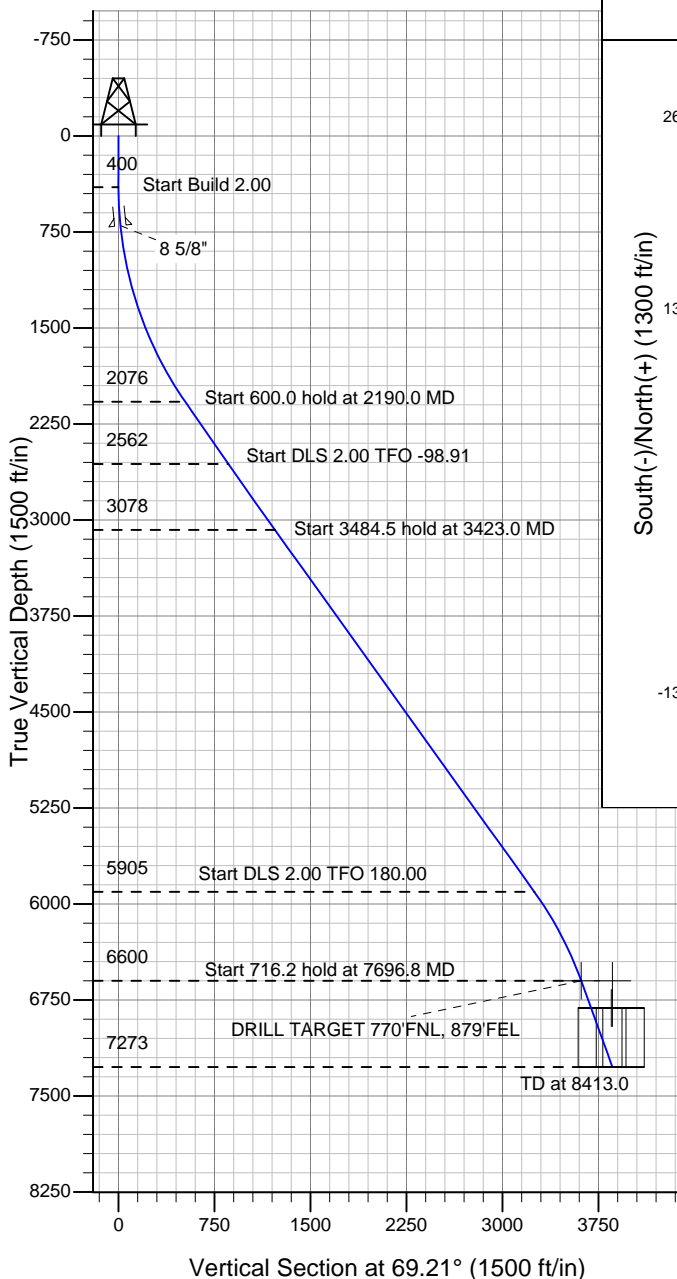
Well Name: Booth EE25-01D

Surface Location: Booth USX EE25-02D Pad Sec.25-T7N-R65W
 North American Datum 1983 , US State Plane 1983 , Colorado Northern Zone
 Ground Elevation: 4820.0

+N/-S	+E/-W	Northing	Easting	Latitude	Longitude	Slot
0.0	0.0	1442847.38	3245475.56	40.545660	-104.616700	

Original Well Elev WELL @ 4833.0ft (Original Well Elev)

NOBLE ENERGY INC WELD COUNTY CO



Booth USX EE25-02D Pad Sec.25-T7N-R65W
 Booth EE25-01D
 Noble Booth EE25-01D Plan #1 (7-22-11)
 15:34, August 02 2011



Azimuths to True North
 Magnetic North: 8.78°

Magnetic Field
 Strength: 53212.9snT
 Dip Angle: 67.19°
 Date: 7/22/2011
 Model: IGRF2010

WELLBORE TARGET DETAILS (LAT/LONG)

Name	TVD	+N/-S	+E/-W	Latitude	Longitude	Shape
DRILL TARGET 770'FNL, 879'FEL	6600.0	1259.7	3388.6	40.549117	-104.604507	Point
PERMIT TARGET BHL 660'FNL, 660'FEL	6600.0	1370.1	3607.2	40.549420	-104.603720	Point
LEGAL BOX 400' X 400' 662'FNL & 670'FEL	6813.0	1368.1	3597.2	40.549414	-104.603756	Rectangle (Sides: L400.0 W400.0)
TARGET CIRCLE 660'FNL & 660'FEL	6813.0	1370.1	3607.2	40.549420	-104.603720	Circle (Radius: 75.0)

SECTION DETAILS

Sec	MD	Inc	Azi	TVD	+N/-S	+E/-W	DLeg	TFace	VSec	Target
1	0.0	0.00	0.00	0.0	0.0	0.0	0.00	0.00	0.0	
2	400.0	0.00	0.00	400.0	0.0	0.0	0.00	0.00	0.0	
3	2190.0	35.80	85.00	2075.8	47.2	539.2	2.00	85.00	520.8	
4	2790.0	35.80	85.00	2562.4	77.8	888.8	0.00	0.00	858.6	
5	3423.0	35.79	63.27	3078.0	177.6	1240.0	2.00	-98.91	1222.3	
6	6907.5	35.79	63.27	5904.6	1094.1	3059.8	0.00	0.00	3249.0	
7	7696.8	20.00	63.27	6600.0	1259.7	3388.6	2.00	180.00	3615.1	DRILL TARGET 770'FNL, 879'FEL
8	8413.0	20.00	63.27	7273.0	1369.9	3607.4	0.00	0.00	3858.7	