

Company: COLEMAN OIL & GAS, INC.

Well: BOHNEN 10-12

Field: WILDCAT

County: YUMA State: COLORADO

CEMENT BOND LOG
GAMMA RAY CCL

| | | | |
|-------------------------------|-------------------------|---------------------|---------------------------|
| County: | YUMA | | |
| Field: | WILDCAT | | |
| Location: | SW NW | | |
| Well: | BOHNEN 10-12 | | |
| Company: | COLEMAN OIL & GAS, INC. | | |
| LOCATION | | | |
| SW NW | | Elev.: K.B. 3949 ft | |
| 2440' FNL & 660' FWL | | G.L. 3937 ft | |
| | | D.F. 3948 ft | |
| Perm arent Datum: | GROUND LEVEL | | Elev.: 3937 ft |
| Log Measured From: | KELLY BUSHING | | 12.0 ft above Perm. Datum |
| Drilling Measured From: | KELLY BUSHING | | |
| API Serial No. | 05-095-10881-00 | Section 10 | Township 2S |
| | | | Range 45W |
| Logging Date | 27-Feb-2008 | | |
| Run Number | 1 | | |
| Depth Driller | 2390 ft | | |
| Schlumberger Depth | 2373 ft | | |
| Bottom Log Interval | 2373 ft | | |
| Top Log Interval | 1300 ft | | |
| Casing Fluid Type | FRESH WATER | | |
| Salinity | | | |
| Density | | | |
| Fluid Level | | | |
| BIT/CASING/TUBING STRING | | | |
| Bit Size | 6.250 in | | |
| From | | | |
| To | | | |
| Casing/Tubing Size | 4.500 in | | |
| Weight | 10.5 lbm/ft | | |
| Grade | J-55 | | |
| From | | | |
| To | | | |
| Maximum Recorded Temperatures | 117 degF | | |
| Logger On Bottom | 27-Feb-2008 | | |
| Unit Number | 309 | 6650 | |
| Recorded By | KEITH KRENTZ | | |
| Witnessed By | DAVE LERWICK | | |

| PVT DATA | | | | Run 1 | Run 2 | Run |
|-------------------------------|---------|---------|--|-------|-------|-----|
| Oil Density | | | | | | |
| Water Salinity | | | | | | |
| Gas Gravity | | | | | | |
| Bo | | | | | | |
| Bw | | | | | | |
| 1/Bg | | | | | | |
| Bubble Point Pressure | | | | | | |
| Bubble Point Temperature | | | | | | |
| Solution GOR | | | | | | |
| Maximum Deviation | | | | | | |
| CEMENTING DATA | | | | | | |
| Primary/Squeeze | | Primary | | | | |
| Casing String No | | | | | | |
| Lead Cement Type | | | | | | |
| Volume | | | | | | |
| Density | | | | | | |
| Water Loss | | | | | | |
| Additives | | | | | | |
| Tail Cement Type | | | | | | |
| Volume | | | | | | |
| Density | | | | | | |
| Water Loss | | | | | | |
| Additives | | | | | | |
| Expected Cement Top | 1500 ft | | | | | |
| Logging Date | | | | | | |
| Run Number | | | | | | |
| Depth Driller | | | | | | |
| Schlumberger Depth | | | | | | |
| Bottom Log Interval | | | | | | |
| Top Log Interval | | | | | | |
| Casing Fluid Type | | | | | | |
| Salinity | | | | | | |
| Density | | | | | | |
| Fluid Level | | | | | | |
| BIT/CASING/TUBING STRING | | | | | | |
| Bit Size | | | | | | |
| From | | | | | | |
| To | | | | | | |
| Casing/Tubing Size | | | | | | |
| Weight | | | | | | |
| Grade | | | | | | |
| From | | | | | | |
| To | | | | | | |
| Maximum Recorded Temperatures | | | | | | |
| Logger On Bottom | | | | | | |
| Unit Number | | | | | | |
| Recorded By | | | | | | |
| Witnessed By | | | | | | |

DISCLAIMER

THE USE OF AND RELIANCE UPON THIS RECORDED-DATA BY THE HEREIN NAMED COMPANY (AND ANY OF ITS AFFILIATES, PARTNERS, REPRESENTATIVES, AGENTS, CONSULTANTS AND EMPLOYEES) IS SUBJECT TO THE TERMS AND CONDITIONS AGREED UPON BETWEEN SCHLUMBERGER AND THE COMPANY, INCLUDING: (a) RESTRICTIONS ON USE OF THE RECORDED-DATA; (b) DISCLAIMERS AND WAIVERS OF WARRANTIES AND REPRESENTATIONS REGARDING COMPANY'S USE OF AND RELIANCE UPON THE RECORDED-DATA; AND (c) CUSTOMER'S FULL AND SOLE RESPONSIBILITY FOR ANY INFERENCE DRAWN OR DECISION MADE IN CONNECTION WITH THE USE OF THIS RECORDED-DATA.

OTHER SERVICES1

OS1: MAST
OS2: CBL
OS3: PERF
OS4:
OS5:

OTHER SERVICES2

OS1:
OS2:
OS3:
OS4:
OS5:

REMARKS: RUN NUMBER 1

DEPTH REFERENCE TO SLB LOG DATED FEBRUARY 4, 2008

REMARKS: RUN NUMBER 2

PERF 2196' - 2216' AT 3 SPF, 60 SHOTS, 3 1/8 HEGS, 16.1gm, EH .41",
pene 18.5", 180 deg

CREW: KEITH & ROGER

THANK YOU FOR CHOOSING SCHULMBERGER.

RUN 1

SERVICE ORDER #: 1200654
PROGRAM VERSION: 15C0-309
FLUID LEVEL:

| LOGGED INTERVAL | START | STOP |
|-----------------|-------|------|
| | | |
| | | |
| | | |
| | | |

RUN 2

SERVICE ORDER #:
PROGRAM VERSION:
FLUID LEVEL:

| LOGGED INTERVAL | START | STOP |
|-----------------|-------|------|
| | | |
| | | |
| | | |
| | | |

EQUIPMENT DESCRIPTION

RUN 1

SURFACE EQUIPMENT

WITM-A

DOWNHOLE EQUIPMENT

MH-22 29.8
MH-22

PSPT-A/B 28.3
PSC-A
PSPT-A

Detail MT
TelStatus
CTEM



28.3

RUN 2

PSTC
PBMS-A
10k Sapphire Manometer
RTD Thermometer
GR
CCL
PBMS

GR — 24.6

Well Temp
Manometer — 21.5
— 21.4

CCL — 20.8

PBMS PSTC — 20.0

SCMT-CB
SCMC-CA 8159
SECH-CA 8158
CMIR-AG
SCMS-CB 8195
SCMX-CA 8159

20.0

DT — 10.9

CBL5 DTSC — 9.4

CBL3 — 8.4

MAP — 7.9

AUX — 6.9

HV
Tension SCMT — 0.0
TOOL ZERO

MAXIMUM STRING DIAMETER 1.69 IN
MEASUREMENTS RELATIVE TO TOOL ZERO
ALL LENGTHS IN FEET

Output DLIS Files

DEFAULT

SCMT_PSP_003LUP

FN:2

PRODUCER

27-Feb-2008 08:28

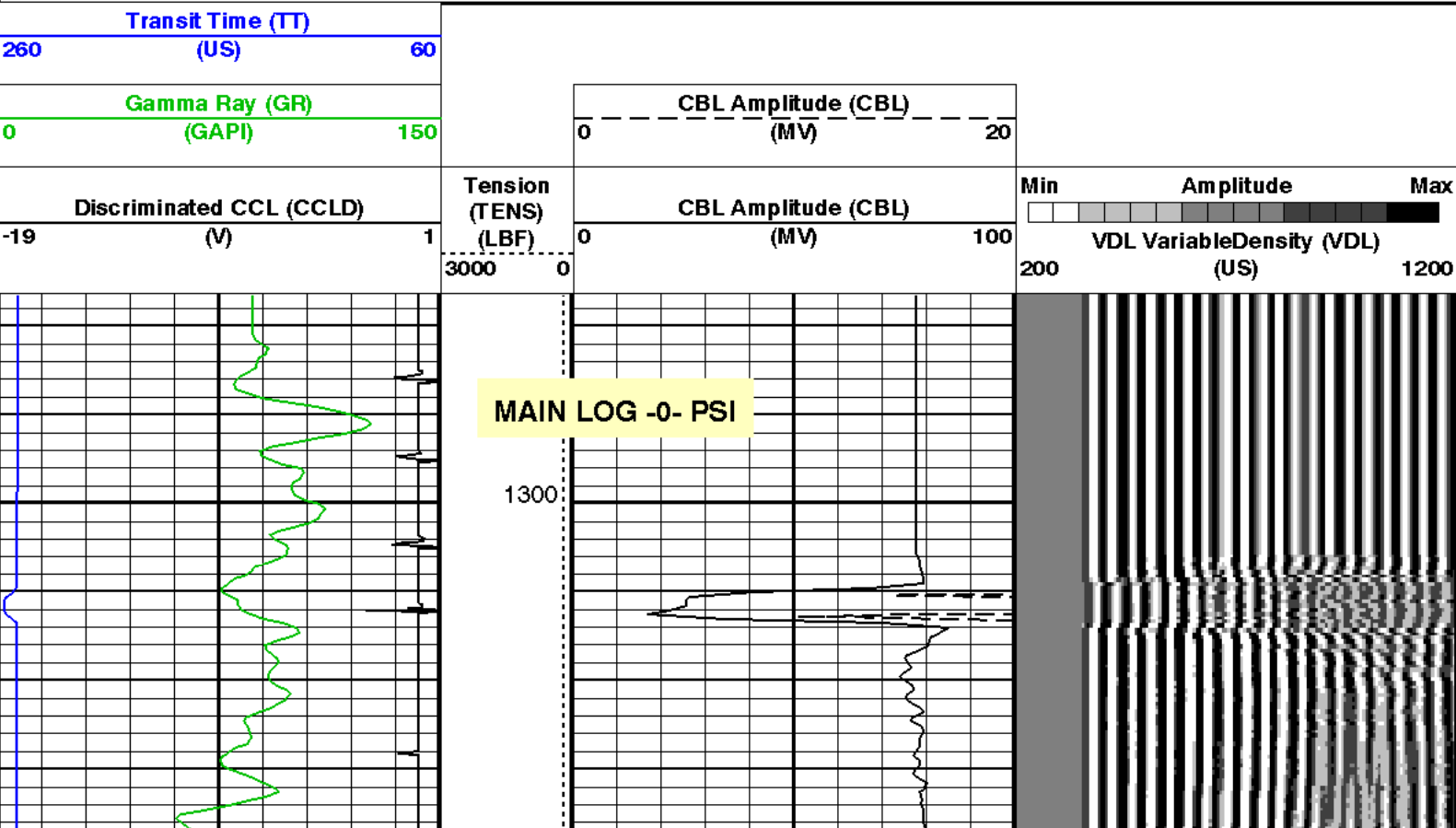
OP System Version: 15C0-309
MCM

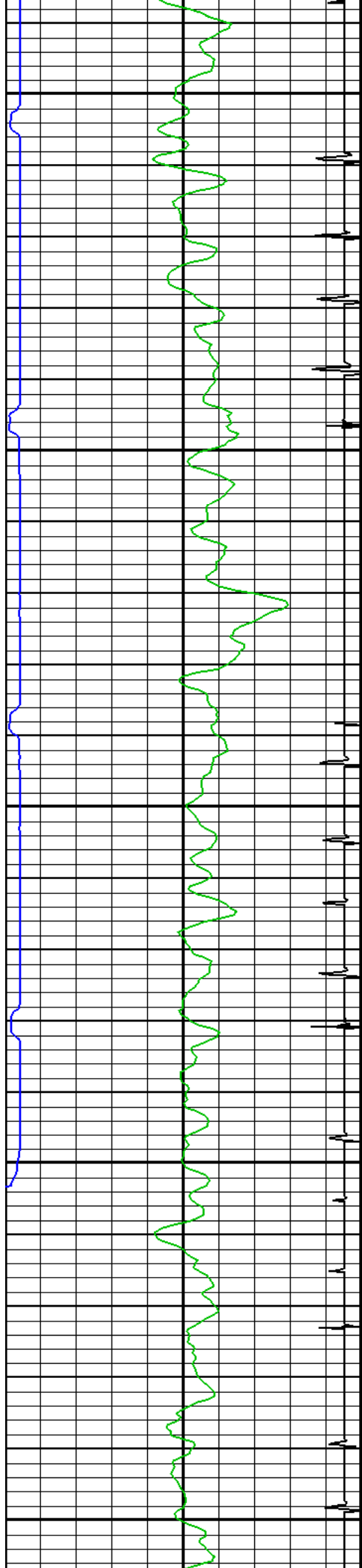
SCMT-CB

SRPC-3525-DEC_2007_OP15

PSPT-A/B

SRPC-3525-DEC_2007_OP15

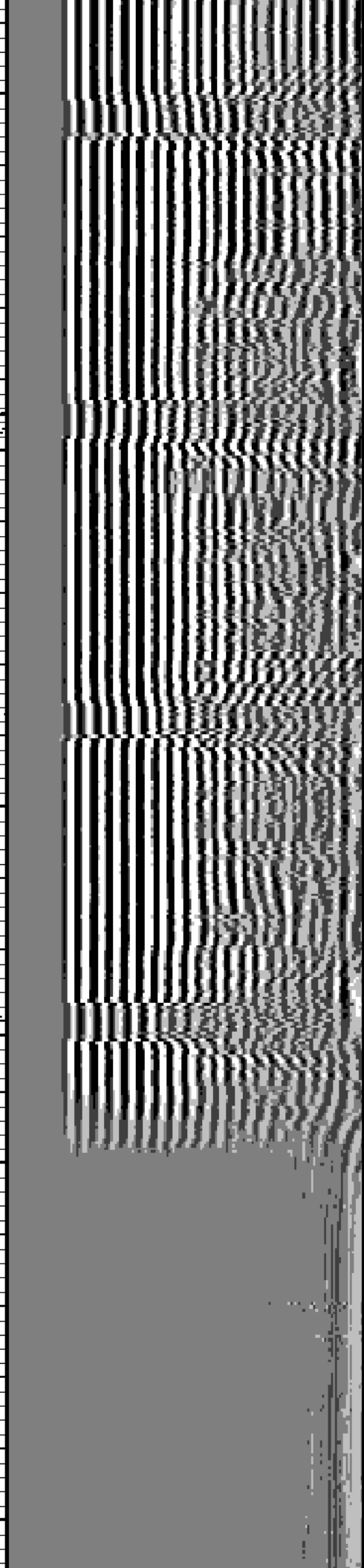
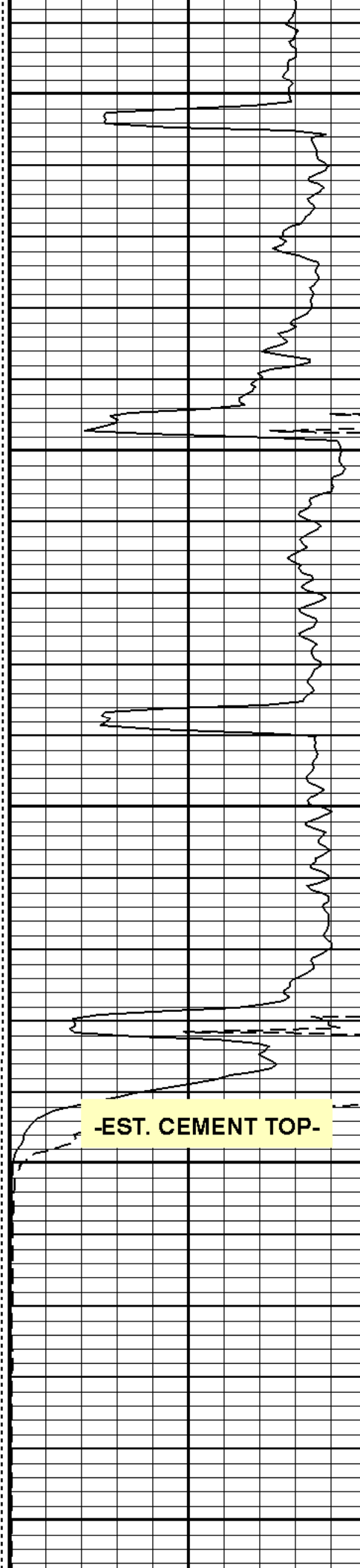


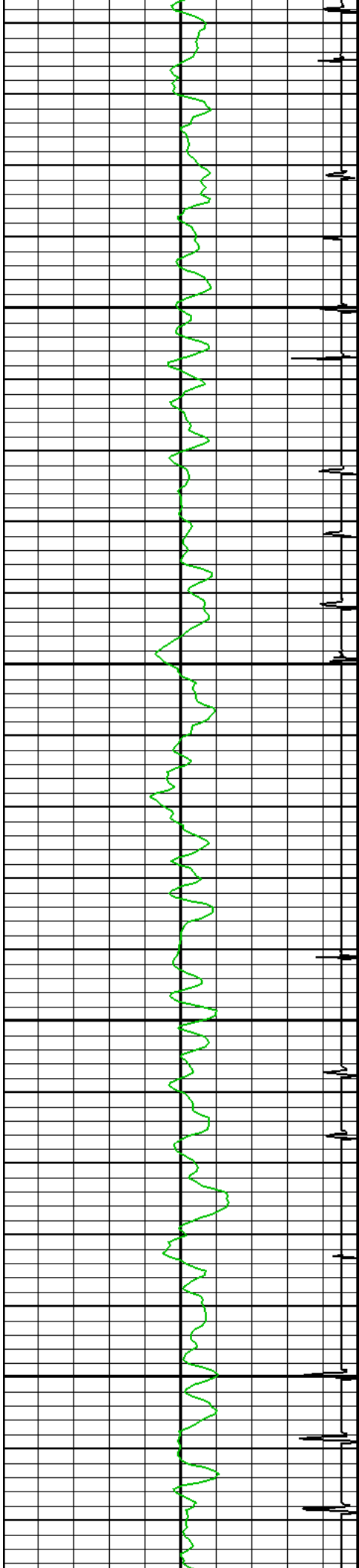


1400

1500

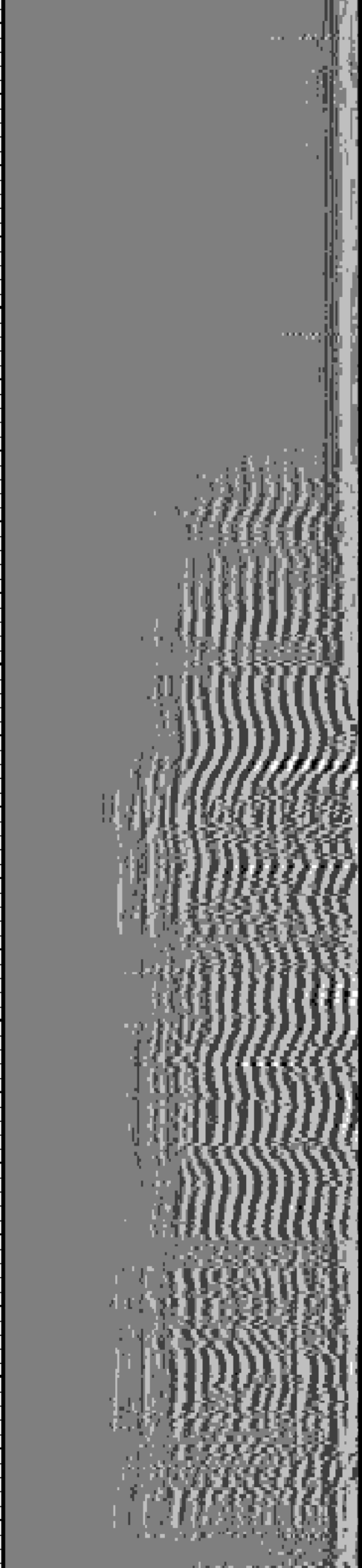
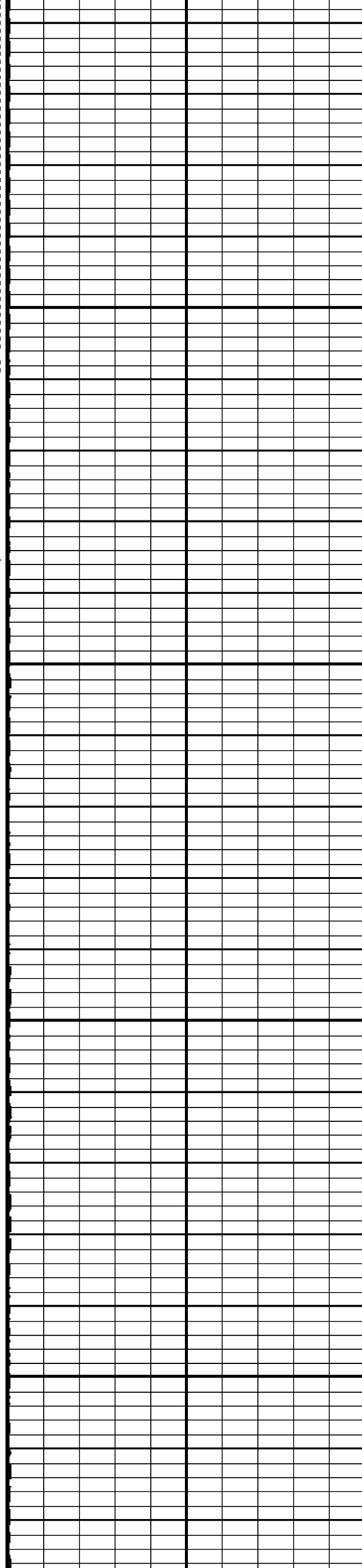
-EST. CEMENT TOP.

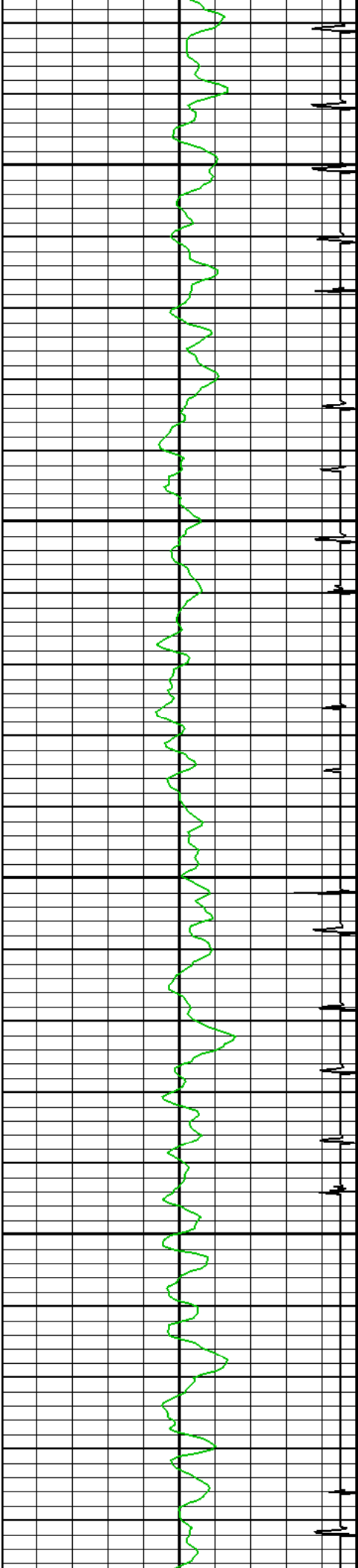




1600

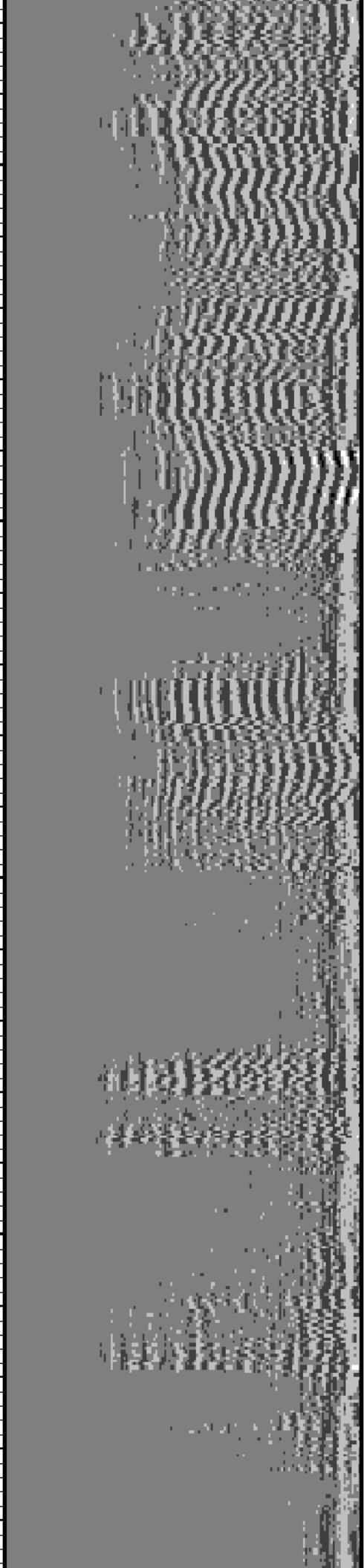
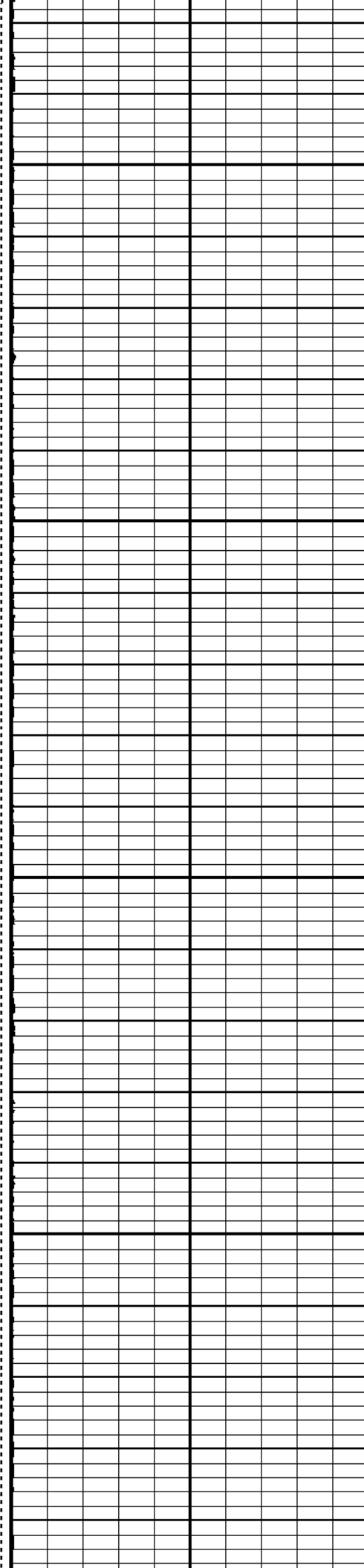
1700

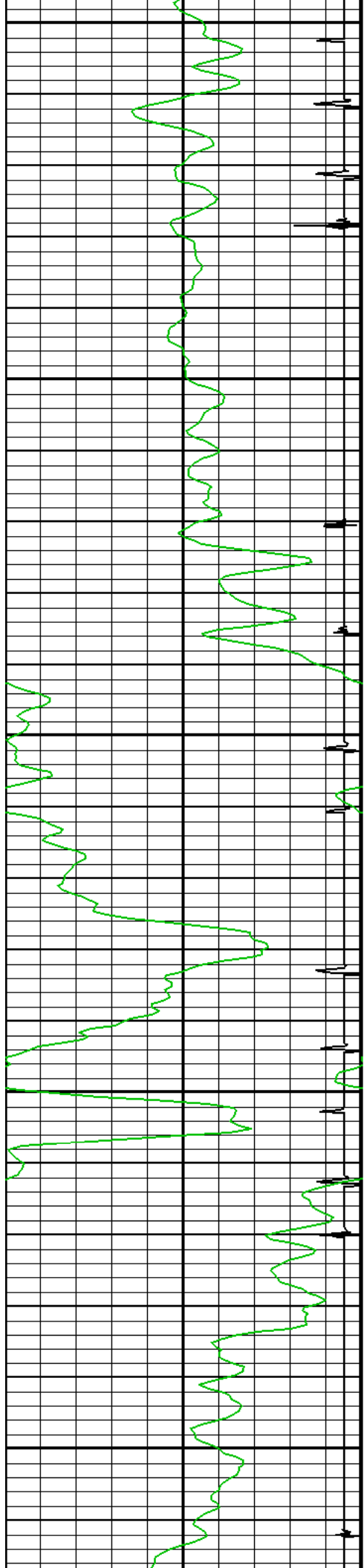




1800

1900

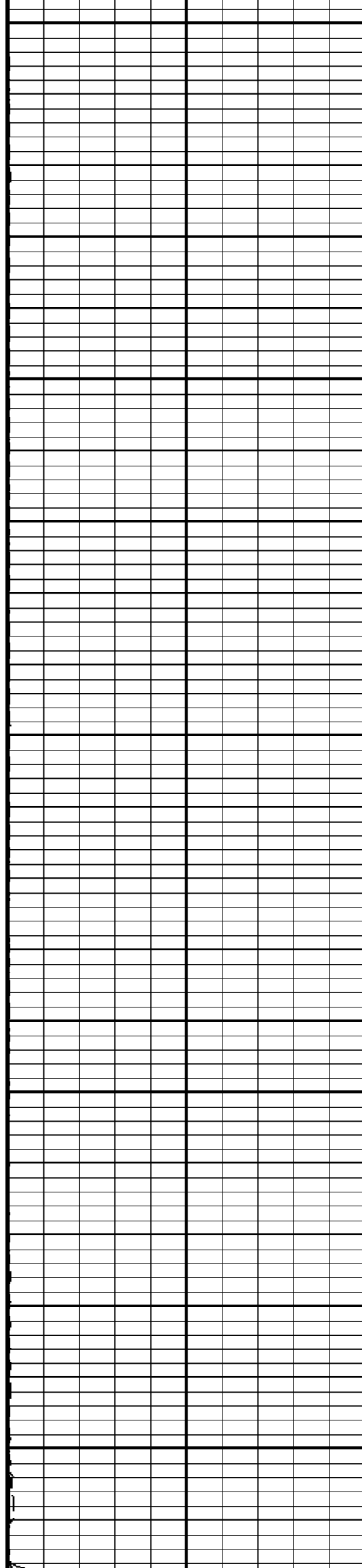


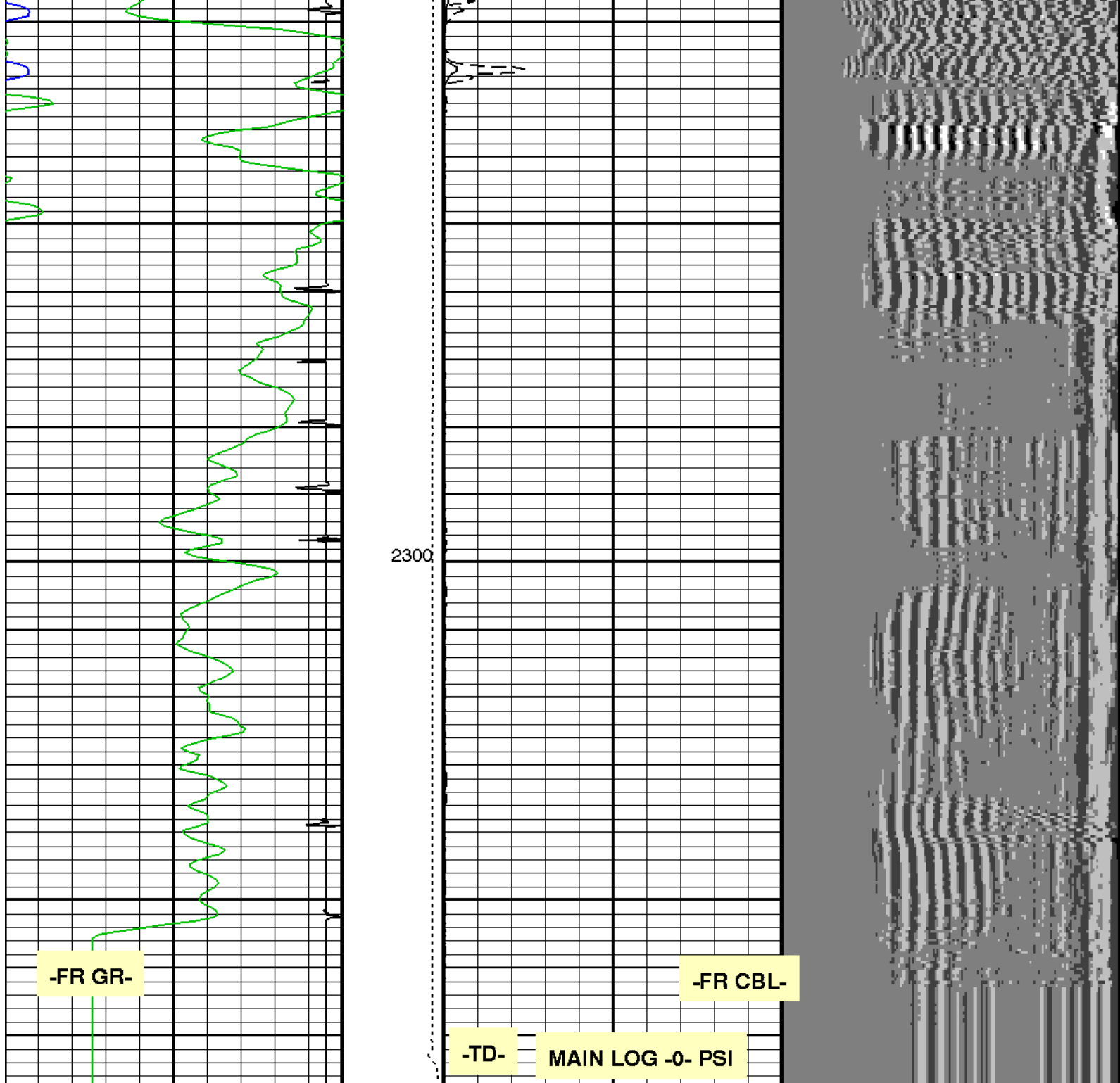


2000:

2100

2200





| | | | | | | | |
|--------------------------|--------|----------------------|---------------------|------|-----|---------------------------|------|
| Discriminated CCL (CCLD) | | Tension (TENS) (LBF) | CBL Amplitude (CBL) | | Min | Amplitude | Max |
| -19 | (V) | 1 | 0 | (MV) | 100 | | |
| Gamma Ray (GR) | | 3000 | 0 | | | VDL VariableDensity (VDL) | |
| 0 | (GAPI) | 150 | 0 | (MV) | 20 | 200 | 1200 |
| Transit Time (TT) | | | | | | | |
| 260 | (US) | 60 | | | | | |

| | | | |
|--|--------------|---------------------------------|---------------------------|
| Sonde Serial Number | SCMS-CB 8195 | | |
| Current Casing Size | 4.50000 IN | | |
| Casing Weight | 10.5000 LB/F | | |
| Expected CBL Amplitude in Free Pipe Section | 79 MV | Minimum Sonic Amplitude | 0.308463 MV (100% Cement) |
| | | | 0.935163 MV (80% Cement) |
| | | MAP Minimum Sonic Amplitude | 2.90558 MV (100% Cement) |
| | | | 5.89639 MV (80% Cement) |
| Master Calibration (Normalization) | | Before Calibration (Adjustment) | |
| Date of Master Calibration | 7-FEB-2005 | | |
| CBL Correction Factor | 0.0655663 | CBL Adjustment Factor (CBAF) | 1.20000 |
| MAP 1 Correction Factor | 0.0935772 | MAP Adjustment Factor (MPAF) | 1.0 |
| MAP 2 Correction Factor | 0.106967 | | |
| MAP 3 Correction Factor | 0.106098 | | |
| MAP 4 Correction Factor | 0.108723 | | |
| MAP 5 Correction Factor | 0.106564 | | |
| MAP 6 Correction Factor | 0.116069 | | |
| MAP 7 Correction Factor | 0.117807 | | |
| MAP 8 Correction Factor | 0.0925897 | | |

Parameters

| DLIS Name | Description | Value | |
|---|--|-----------|------|
| SCMT-CB: Slim Cement Mapping Tool, 1-11/16 OD | | | |
| BILI | Bond Index Level for Zone Isolation | 0.8 | |
| CB3D | SCMT CBL 3 ft Peak Detection Mode | PEAK | |
| CB3G | SCMT CBL 3 ft Peak Detection T0_Delay and Noise Gate | 229.39 | US |
| CB3T | SCMT CBL 3 ft Fixed Threshold Level | 20 | MV |
| CB5D | SCMT CBL 5 ft Peak Detection Mode | PEAK | |
| CB5G | SCMT CBL 5 ft Peak Detection T0_Delay and Noise Gate | 343.39 | US |
| CB5T | SCMT CBL 5 ft Fixed Threshold Level | 20 | MV |
| CBLG | CBL Gate Width | 40 | US |
| CBRA | CBL LQC Reference Amplitude in Free Pipe | 79 | MV |
| CMCF | CBL Cement Type Compensation Factor | 0.0851843 | |
| CMTC | SCMT Slow Channel Multiplexer Mode | SCAN | |
| CMTM | SCMT Operating Mode | LOG | |
| CSCS | SCMT Slow Channel Index | VCC | |
| CTHI | Casing Thickness | 0.229988 | IN |
| DTF | Delta-T Fluid | 205 | US/F |
| FATT | Acoustic Attenuation due to Fluid | 0 | DB/F |
| FCF | CBL Fluid Compensation Factor | 1 | |
| GOBO | Good Bond | 0.935163 | MV |
| MAPD | SCMT MAP Peak Detection Mode | PEAK | |
| MAPG | SCMT MAP Peak Detection T0_Delay and Noise Gate | 172.39 | US |
| MAPT | SCMT MAP Fixed Threshold Level | 30 | MV |
| MATT | Maximum Attenuation | 10.6967 | DB/F |
| MCCF | MAP Cement Type Compensation Factor | 0.207723 | |
| MCI | Minimum Cemented Interval for Isolation | 1.25 | FT |
| MMSA | MAP Minimum Sonic Amplitude | 2.90558 | MV |
| MSA | Minimum Sonic Amplitude | 0.308463 | MV |
| PEDE | Peak Detection On/Off Switch in Playback | OFF | |
| VDLG | VDL Manual Gain | 5 | |
| ZCMT | Acoustic Impedance of Cement | 3.22 | MRAY |
| System and Miscellaneous | | | |
| CSIZ | Current Casing Size | 4.500 | IN |
| CWEI | Casing Weight | 10.50 | LB/F |
| DFD | Drilling Fluid Density | -50000.00 | LB/G |
| TD | Total Depth | -50000 | FT |

Output DLIS Files

DEFAULT SCMT_PSP_003LUP FN:2 PRODUCER 27-Feb-2008 08:28

Company: COLEMAN OIL & GAS, INC.

Schlumberger

Well: BOHNEN 10-12

Field: **WILDCAT**
County: **YUMA**
State: **COLORADO**

CEMENT BOND LOG
GAMMA RAY CCL