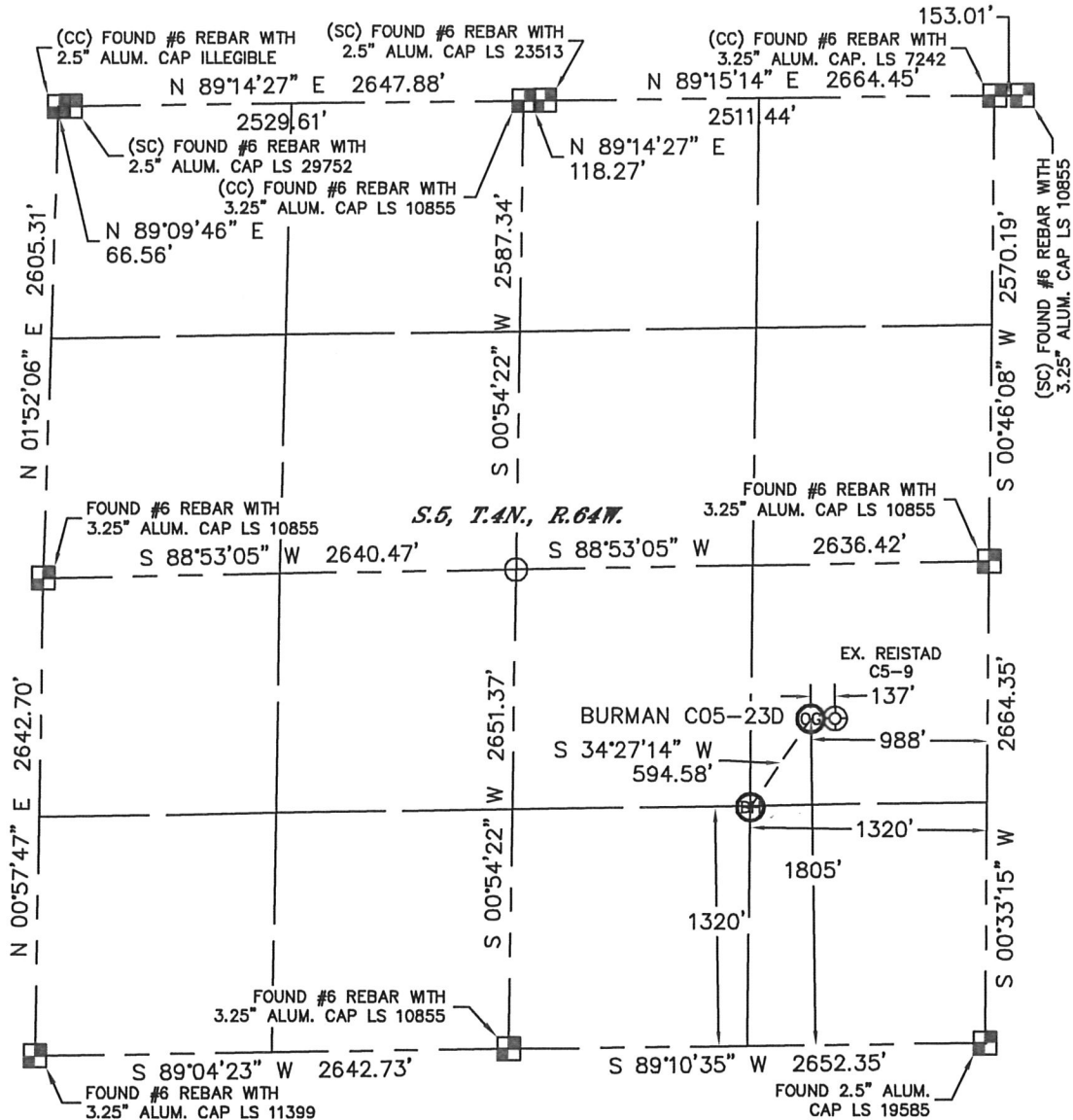


# WELL LOCATION CERTIFICATE

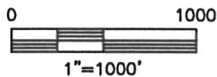
THIS MAP DOES NOT REPRESENT A BOUNDARY SURVEY

SECTION: 5  
TOWNSHIP: 4N  
RANGE: 64W



In accordance with a request from Matt Verbit with Noble Energy Inc. Lat40°, Inc. has determined the surface location of the BURMAN C05-23D to be 1805' from the SOUTH line and 988' from the EAST line and the bottom hole to be 1320' from the SOUTH line and 1320' from the EAST line as measured at right angles from the section lines of Section 5, Township 4 North, Range 64 West of the Sixth Principal Meridian, County of Weld, State of Colorado.

I hereby state that this Well Location Certificate was prepared by me, or under my direct supervision, that the fieldwork was completed on 4/19/11, for and on behalf of Noble Energy Inc. That this is not a Land Survey Plat or an Improvement Survey Plat, and that it is not to be relied upon for establishment of fence, building, or other future improvement lines.



**NOTE:**

- 1) Bearings shown are Grid Bearings of the Colorado State Plane Coordinate System, North Zone, North American Datum 1983/2007. The lineal dimensions as contained herein are based upon the "U.S. Survey Foot."
- 2) Ground elevations are based on an observed GPS elevation (NAVD 1988 DATUM).
- 3) NEAREST EXISTING WELL: REISTAD C5-9, 137'
- 4) IMPROVEMENTS: See LOCATION DRAWING for all visible improvements within 400' of disturbed area.
- 5) SURFACE USE: RANGELAND
- 6) INSTRUMENT OPERATOR: ADAM KELLY

**SURFACE LOCATION**  
LATITUDE: 40.33910°N  
LONGITUDE: 104.56840°W  
PDOP: 1.4  
ELEV: 4749'  
1/4, 1/4: NE1/4SE1/4  
NEAREST PROPERTY LINE: 332' WEST

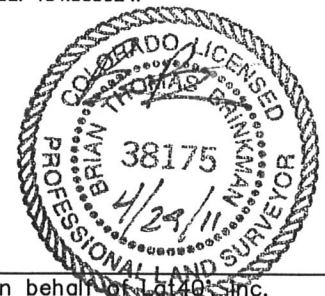
**BOTTOM HOLE**  
LATITUDE: 40.33777°N  
LONGITUDE: 104.56962°W

**NOTE**

According to Colorado law, you must commence any legal action based upon any defect in this W.L.C. within three years after you discover such defect. In no event, may any action based upon any defect in this survey be commenced more than ten years after the date of the certificate shown hereon. (13-80-105 C.R.S.)

**LEGEND**

- = ALIQUOT MONUMENT AS DESCRIBED
- = CALCULATED POSITION



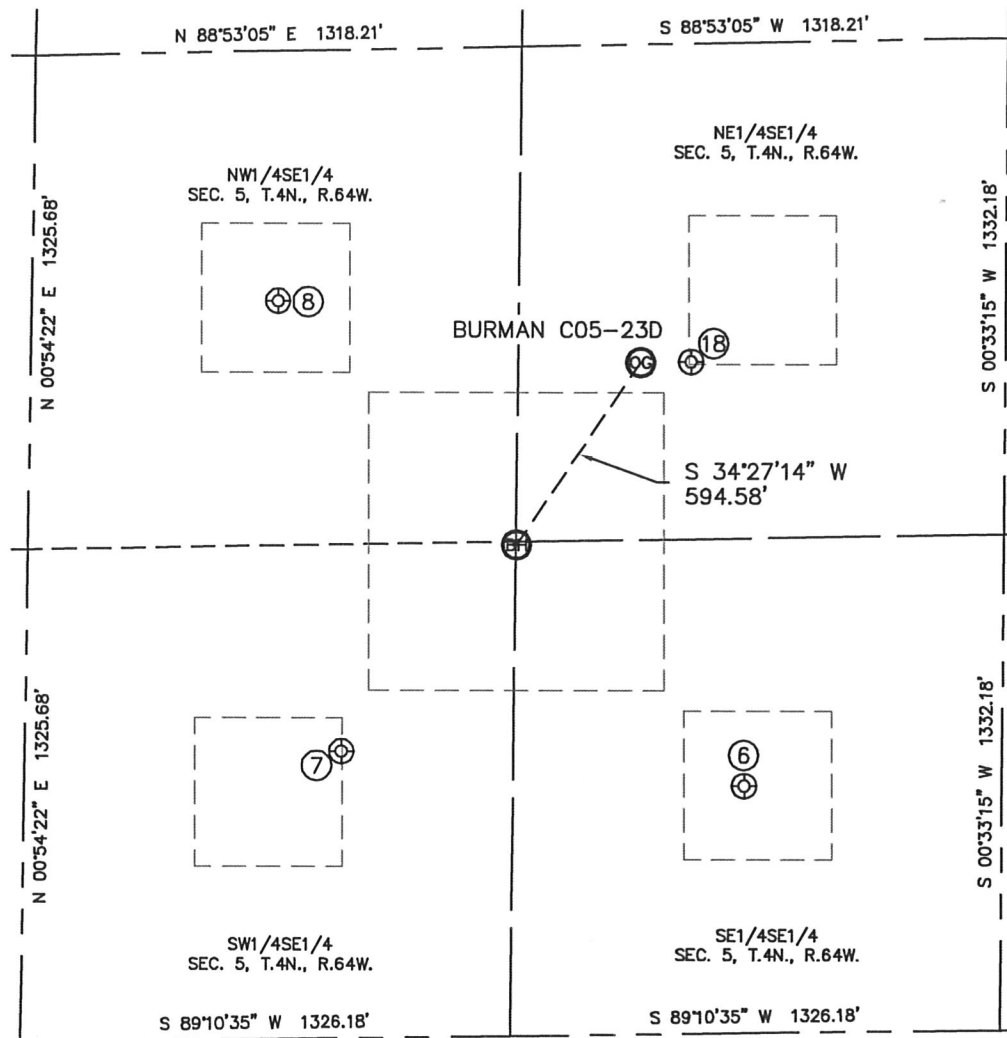
Brian T. Brinkman—On behalf of Lat40°, Inc.  
Colorado Licensed Professional  
Land Surveyor No. 38175

PROJECT#: 2011034

# SITE SKETCH

BURMAN CO5-23D

SECTION: 5  
TOWNSHIP: 4N  
RANGE: 64W



⑥  
REISTAD 1  
SE1/4SE1/4  
664' FSL  
698' FEL  
LAT-40.33597N  
LONG-104.56744W  
PDOP:1.4  
ELEV: 4759'

⑦  
LEVI C5-15  
SW1/4SE1/4  
771' FSL  
1789' FEL  
LAT-40.33626N  
LONG-104.57135W  
PDOP:1.3  
ELEV: 4763'

⑧  
OPDYKE / HINKLE 1  
NW1/4SE1/4  
1983' FSL  
1972' FEL  
LAT-40.33958N  
LONG-104.57192W  
PDOP:1.2  
ELEV: 4747'

⑱  
REISTAD C5-9  
NE1/4SE1/4  
1806' FSL  
851' FEL  
LAT-40.33910N  
LONG-104.56791W  
PDOP:1.1  
ELEV: 4750'

