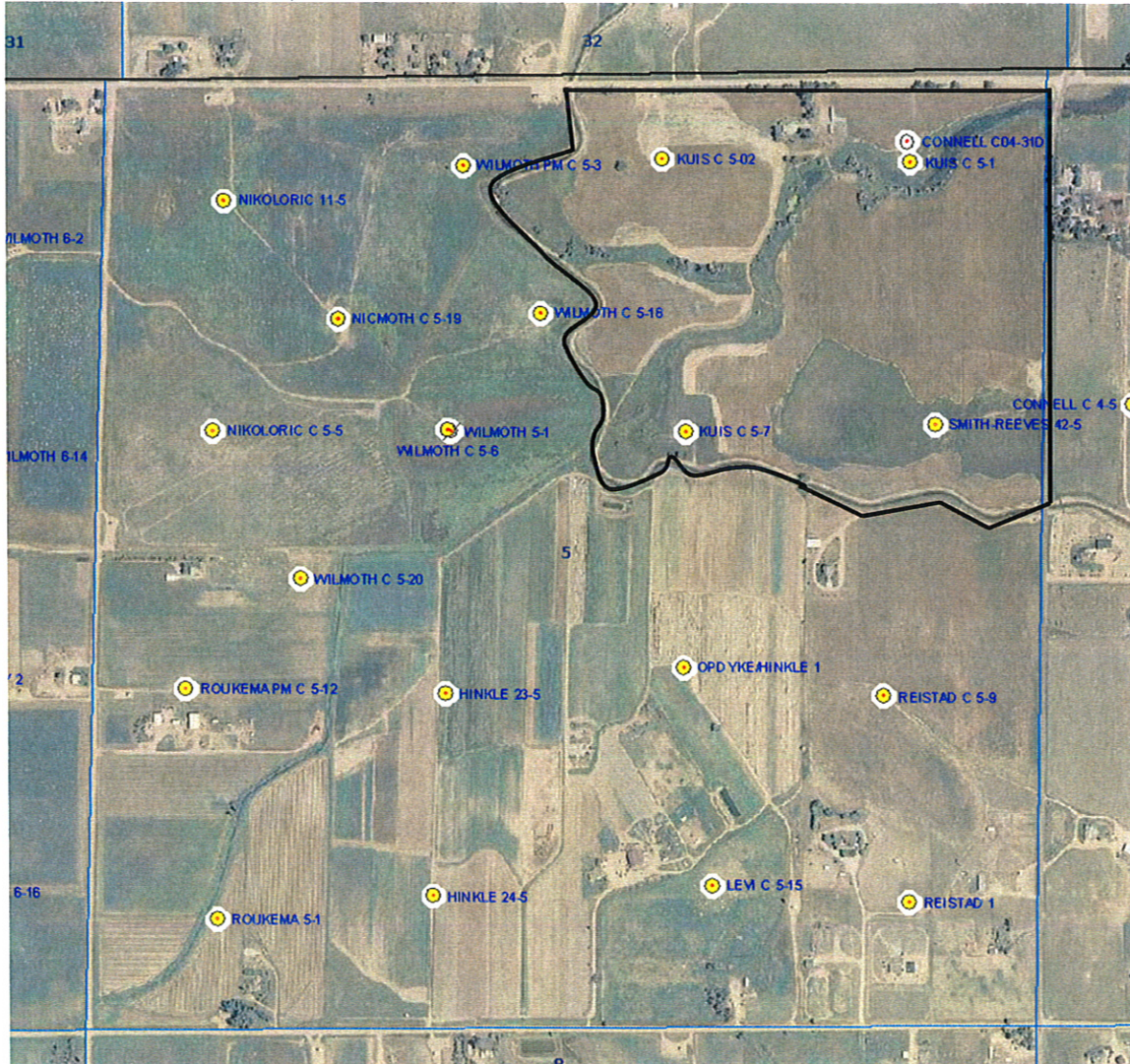


## LEASE DESCRIPTION FOR APD

Wells: Burman C05-17D  
Location: Township 4 North, Range 64 West, 6<sup>th</sup> P.M.  
Sec. 5: NE/4SE/4 (surface location for all wells)

Description: Township 4 North, Range 64 West, 6<sup>th</sup> P.M.  
Sec. 5: That part of the N/2 of Section 5 lying North and East of and below the right-of-way of the Gilmore Canal.  
containing 133.00 acres, more or less in Weld County, CO.

Source: COGCC website aerial photos 8/15/2011.



- Black outline is approximation of leased area.
- Blue lines are section lines.
- *Map is approximate, not to scale and for illustration purposes only.*