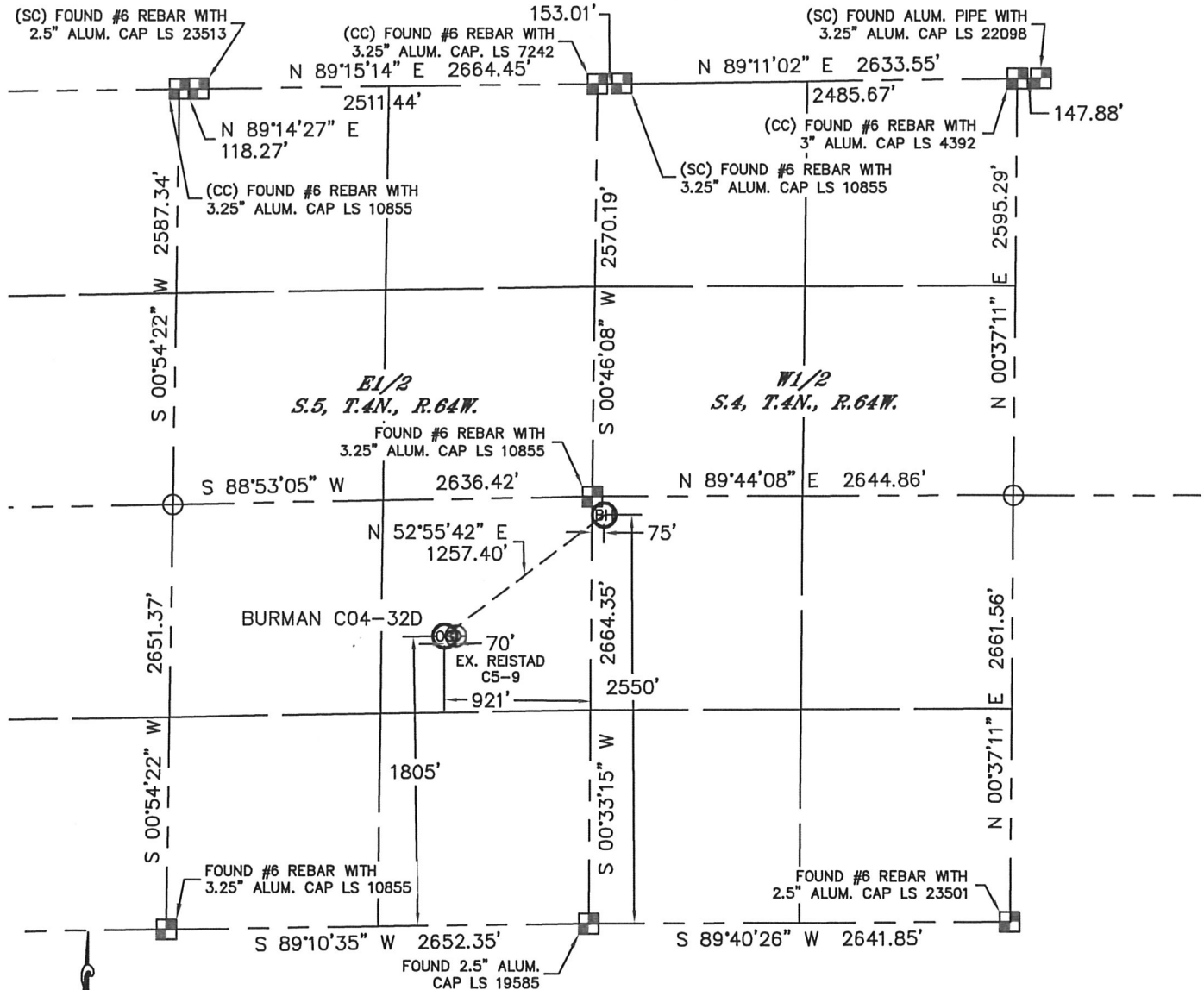


# WELL LOCATION CERTIFICATE

SECTION: 5  
TOWNSHIP: 4N  
RANGE: 64W

THIS MAP DOES NOT REPRESENT A BOUNDARY SURVEY



In accordance with a request from Matt Verbit with Noble Energy Inc. Lat40°, Inc. has determined the surface location of the BURMAN C04-32D to be 1805' from the SOUTH line and 921' from the EAST line as measured at right angles from the section lines of Section 5, Township 4 North, Range 64 West and the bottom hole to be 2550' from the SOUTH line and 75' from the WEST line as measured at right angles from the section lines of Section 4, Township 4 North, Range 64 West of the Sixth Principal Meridian, County of Weld, State of Colorado.

I hereby state that this Well Location Certificate was prepared by me, or under my direct supervision, that the fieldwork was completed on 4/19/11, for and on behalf of Noble Energy Inc. That this is not a Land Survey Plat or an Improvement Survey Plat, and that it is not to be relied upon for establishment of fence, building, or other future improvement lines.

**NOTE:**

- 1) Bearings shown are Grid Bearings of the Colorado State Plane Coordinate System, North Zone, North American Datum 1983/2007. The lineal dimensions as contained herein are based upon the "U.S. Survey Foot."
- 2) Ground elevations are based on an observed GPS elevation (NAVD 1988 DATUM).
- 3) NEAREST EXISTING WELL: REISTAD C5-9, 70'
- 4) IMPROVEMENTS: See LOCATION DRAWING for all visible improvements within 400' of disturbed area.
- 5) SURFACE USE: RANGELAND
- 6) INSTRUMENT OPERATOR: ADAM KELLY

**SURFACE LOCATION**

LATITUDE: 40.33910°N  
LONGITUDE: 104.56816°W  
PDOP: 1.0  
ELEV: 4750'  
1/4, 1/4: NE1/4SE1/4  
NEAREST PROPERTY LINE: 399' WEST

**BOTTOM HOLE**

LATITUDE: 40.34115°N  
LONGITUDE: 104.56453°W

**NOTE**

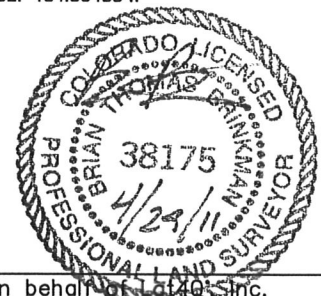
According to Colorado law, you must commence any legal action based upon any defect in this W.L.C. within three years after you discover such defect. In no event, may any action based upon any defect in this survey be commenced more than ten years after the date of the certificate shown hereon. (13-80-105 C.R.S.)

**LEGEND**

- = ALIQUOT MONUMENT AS DESCRIBED  
○ = CALCULATED POSITION

Brian T. Brinkman—On behalf of Lat40°, Inc.  
Colorado Licensed Professional  
Land Surveyor No. 38175

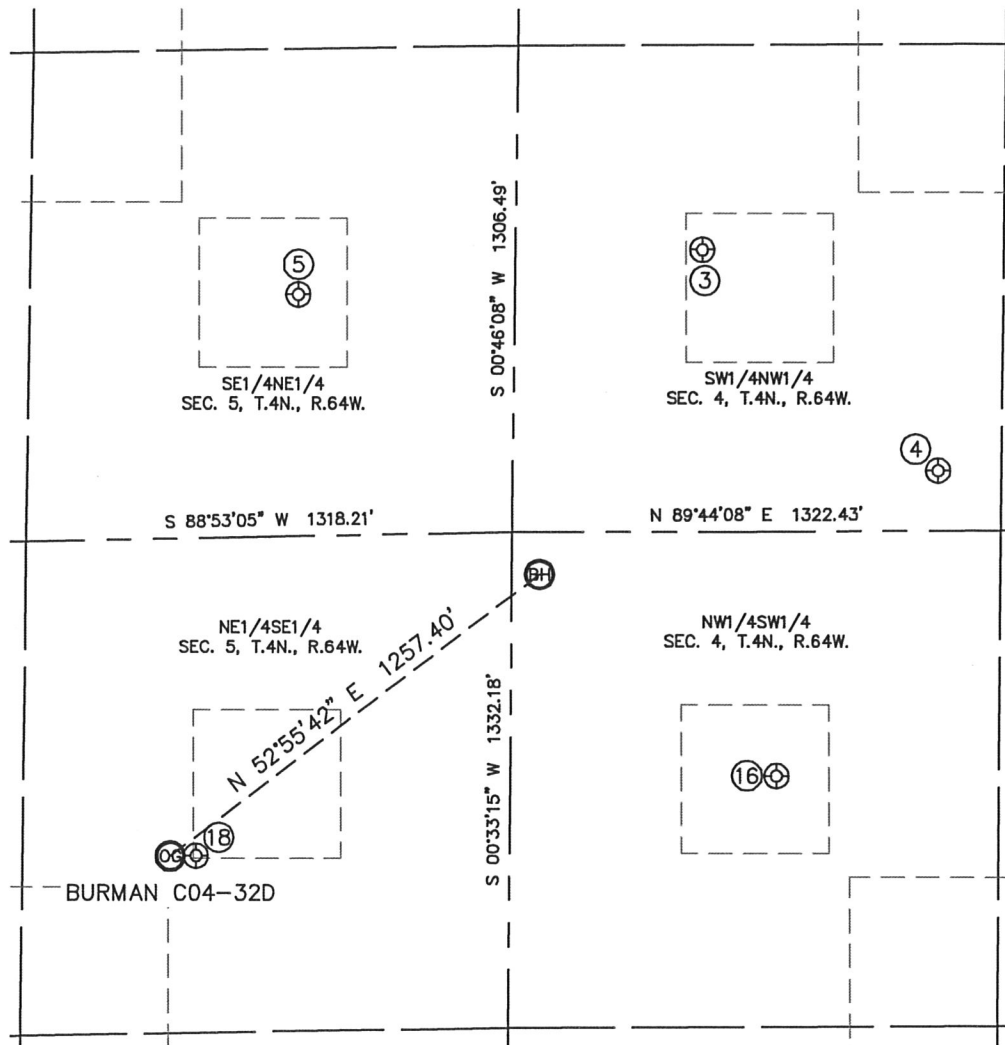
PROJECT#: 2011034



# SITE SKETCH

BURMAN C04-32D

SECTION: 5  
TOWNSHIP: 4N  
RANGE: 64W



③

CONNELL C4-5  
SW1/4NW1/4  
1818' FNL  
504' FWL  
LAT-40.34353°N  
LONG-104.56292°W  
PDOP: 1.4  
ELEV: 4710'

④

CONNELL C4-20  
SW1/4NW1/4  
2419' FNL  
1151' FWL  
LAT-40.34189°N  
LONG-104.56065°W  
PDOP: 1.9  
ELEV: 4712'

⑤

SMITH REEVES 42-5  
SE1/4NE1/4  
1925' FNL  
589' FEL  
LAT-40.34323°N  
LONG-104.56685°W  
PDOP: 1.4  
ELEV: 4716'

⑬

CONNELL 2  
NW1/4SW1/4  
2006' FSL  
719' FWL  
LAT-40.33965°N  
LONG-104.56226°W  
PDOP: 2.1  
ELEV: 4732'

⑱

REISTAD C5-9  
NE1/4SE1/4  
1806' FSL  
851' FEL  
LAT-40.33910°N  
LONG-104.56791°W  
PDOP: 1.1  
ELEV: 4750'

