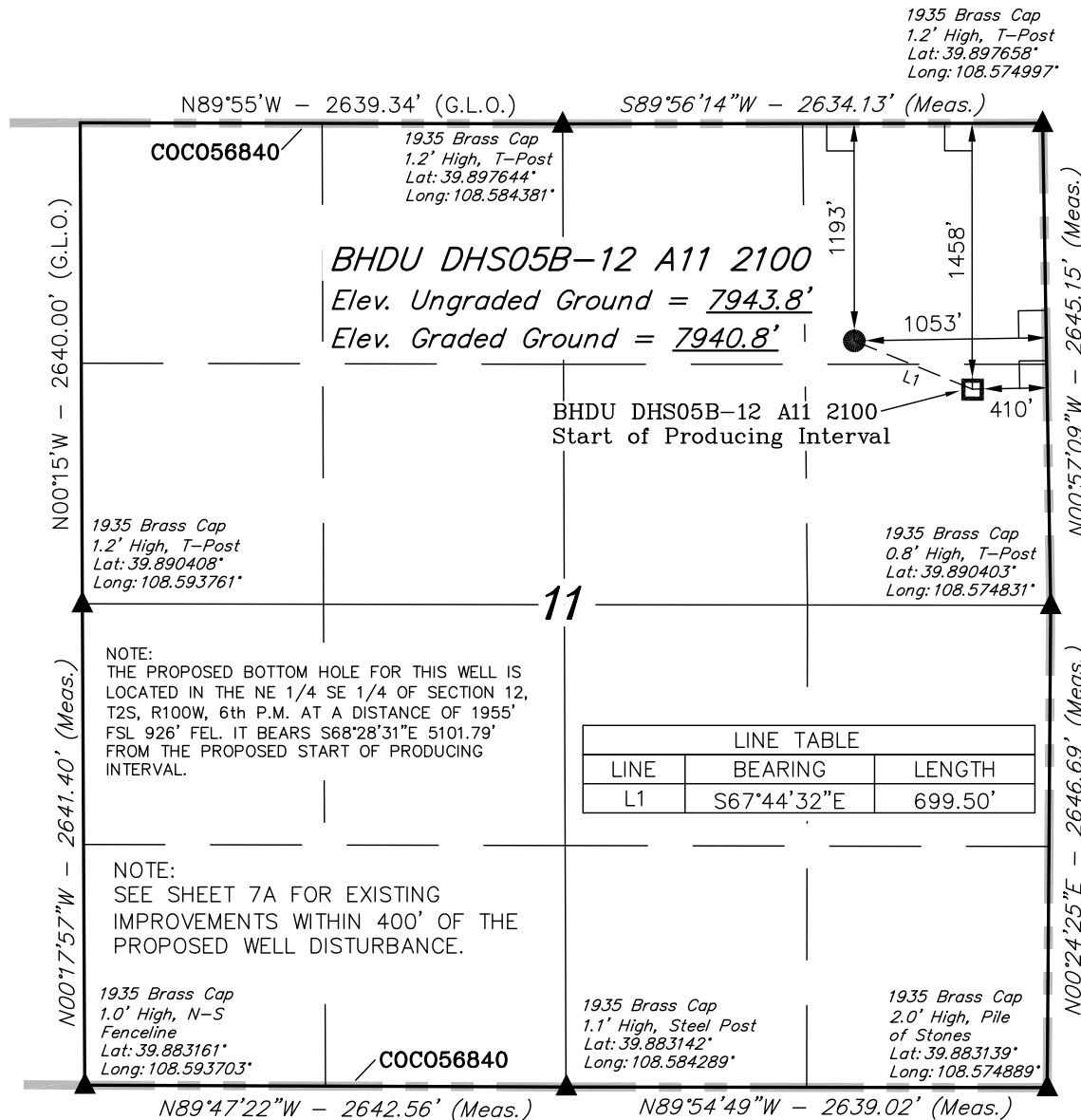


T2S, R100W, 6th P.M.

Encana OIL & GAS (USA) INC.

Well location, BHDU DHS05B-12 A11 2100 (SURFACE LOCATION), located as shown in the NE 1/4 NE 1/4 of Section 11, T2S, R100W, 6th P.M., Rio Blanco County, Colorado.



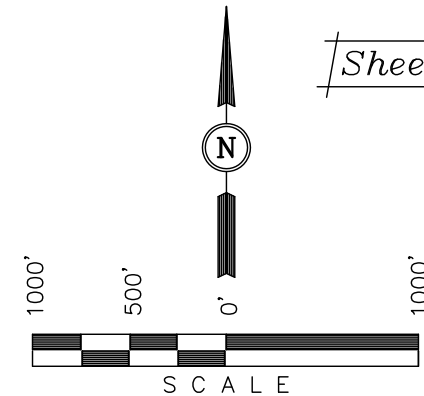
### BASIS OF ELEVATION

SPOT ELEVATION AT THE NORTHEAST CORNER OF SECTION 10, T1S, R99W, 6th P.M. TAKEN FROM THE WOLF RIDGE QUADRANGLE, COLORADO, RIO BLANCO COUNTY, 7.5 MINUTE SERIES (TOPOGRAPHICAL MAP) PUBLISHED BY THE UNITED STATES DEPARTMENT OF THE INTERIOR, GEOLOGICAL SURVEY. SAID ELEVATION IS MARKED AS BEING 6663 FEET.

### BASIS OF BEARINGS

BASIS OF BEARINGS IS A G.P.S. OBSERVATION.

Sheet 1c of 11



### CERTIFICATE

THIS IS TO CERTIFY THAT THE ABOVE PLAT WAS PREPARED FROM FIELD NOTES OF ACTUAL SURVEYS MADE BY ME OR UNDER MY SUPERVISION AND THAT THE SAME ARE TRUE AND CORRECT TO THE BEST OF MY KNOWLEDGE AND BELIEF.

REGISTERED LAND SURVEYOR  
REGISTRATION NO. 17492  
STATE OF COLORADO

Revised: 07-27-11 D.R.B.

**UINTAH ENGINEERING & LAND SURVEYING**  
85 SOUTH 200 EAST - VERNAL, UTAH 84078  
(435) 789-1017

### LEGEND:

- └─┘ = 90° SYMBOL
- = PROPOSED WELL HEAD.
- ▲ = SECTION CORNERS LOCATED.

PDOP = 1.5

NAD 83 (Start of Producing Interval)	NAD 83 (SURFACE LOCATION)
LATITUDE = 39°53'37.16" (39.893656)	LATITUDE = 39°53'39.77" (39.894381)
LONGITUDE = 108°34'34.92" (108.576367)	LONGITUDE = 108°34'43.23" (108.578675)
NAD 27 (Start of Producing Interval)	NAD 27 (SURFACE LOCATION)
LATITUDE = 39°53'37.25" (39.893681)	LATITUDE = 39°53'39.86" (39.894406)
LONGITUDE = 108°34'32.57" (108.575714)	LONGITUDE = 108°34'40.88" (108.578022)

SCALE 1" = 1000'	DATE SURVEYED: 09-23-10	DATE DRAWN: 06-22-11
PARTY G.O. B.B. D.R.B.	REFERENCES G.L.O. PLAT	
WEATHER COOL	FILE Encana OIL & GAS (USA) INC.	

# Encana OIL & GAS (USA) INC.

*T2S, R100W, 6th P.M.*

Well location, BHDU DHS05B-12 A11 2100 (TARGET BOTTOM HOLE), located as shown in the NE 1/4 SE 1/4 of Section 12, T2S, R100W, 6th P.M., Rio Blanco County, Colorado.

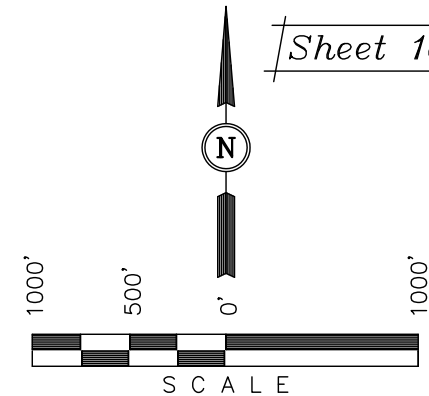
## BASIS OF ELEVATION

SPOT ELEVATION AT THE NORTHEAST CORNER OF SECTION 10, T1S, R99W, 6th P.M. TAKEN FROM THE WOLF RIDGE QUADRANGLE, COLORADO, RIO BLANCO COUNTY, 7.5 MINUTE SERIES (TOPOGRAPHICAL MAP) PUBLISHED BY THE UNITED STATES DEPARTMENT OF THE INTERIOR, GEOLOGICAL SURVEY. SAID ELEVATION IS MARKED AS BEING 6663 FEET.

## BASIS OF BEARINGS

BASIS OF BEARINGS IS A G.P.S. OBSERVATION.

*Sheet 1d of 11*



## CERTIFICATE

THIS IS TO CERTIFY THAT THE ABOVE PLAT WAS PREPARED FROM FIELD NOTES OF ACTUAL SURVEYS MADE BY ME OR UNDER MY SUPERVISION AND THAT THE SAME ARE TRUE AND CORRECT TO THE BEST OF MY KNOWLEDGE AND BELIEF.

REGISTERED LAND SURVEYOR  
REGISTRATION NO. 17492  
STATE OF COLORADO

Revised: 07-27-11 D.R.B.

**UINTAH ENGINEERING & LAND SURVEYING**  
**85 SOUTH 200 EAST - VERNAL, UTAH 84078**  
**(435) 789-1017**

SCALE 1" = 1000'	DATE SURVEYED: 09-23-10	DATE DRAWN: 06-22-11
PARTY G.O. B.B. D.R.B.	REFERENCES G.L.O. PLAT	
WEATHER COLD	FILE Encana OIL & GAS (USA) INC.	

LINE TABLE		
LINE	BEARING	LENGTH
L1	N00°15'25"W	343.28'
L2	N00°17'18"W	326.05'
L3	N00°04'45"W	321.90'

NAD 83 (TARGET BOTTOM HOLE)	
LATITUDE	= 39°53'18.71" (39.888531)
LONGITUDE	= 108°33'34.03" (108.559453)
NAD 27 (TARGET BOTTOM HOLE)	
LATITUDE	= 39°53'18.80" (39.888556)
LONGITUDE	= 108°33'31.68" (108.558800)

NOTE:  
THE PROPOSED START OF PRODUCING INTERVAL FOR THIS WELL IS LOCATED IN THE SE 1/4 NE 1/4 OF SECTION 11, T2S, R100W, 6th P.M. AT A DISTANCE OF 1458' FNL 410' FEL. IT BEARS N68°28'31"W 5101.79' FROM THE TARGET BOTTOM HOLE.

BHDU DHS05B-12 A11 2100  
TARGET BOTTOM HOLE

COC057304

COC057304

12

R  
100  
W

R  
99  
W

NW Cor Sec 7  
1935 Brass Cap  
2.0' High, T-Post  
Lat: 39.898553°  
Long: 108.556211°

1935 Brass Cap  
1.1' High, T-Post  
Lat: 39.897661°  
Long: 108.565600°

1935 Brass Cap  
0.5' High, T-Post  
Lat: 39.897669°  
Long: 108.556208°

W 1/4 Cor Sec 7  
1931 Brass Cap  
1.0' High, T-Post  
Lat: 39.891300°  
Long: 108.556175°

1931 Brass Cap  
0.8' High, T-Post  
Lat: 39.890406°  
Long: 108.556169°

SW Cor Sec 7  
1931 Brass Cap  
1.4' High, Pile of  
Stones, T-Post  
Lat: 39.884106°  
Long: 108.556125°

1935 Brass Cap  
1.1' High, Pile of  
Stones, T-Post  
Lat: 39.883167°  
Long: 108.565511°

1935 Brass Cap  
1.2' High, T-Post  
Lat: 39.897658°  
Long: 108.574997°

1935 Brass Cap  
0.8' High, T-Post  
Lat: 39.890403°  
Long: 108.574831°

1935 Brass Cap  
2.0' High, Pile  
of Stones  
Lat: 39.883139°  
Long: 108.574889°

## LEGEND:

└─ = 90° SYMBOL

● = PROPOSED WELL HEAD.

= SECTION CORNERS LOCATED.