

Encana OIL & GAS (USA) INC.

T2S, R100W, 6th P.M.

Well location, BHDU DHN08B-1 A11 2100 (SURFACE LOCATION), located as shown in the NE 1/4 NE 1/4 of Section 11, T2S, R100W, 6th P.M., Rio Blanco County, Colorado.

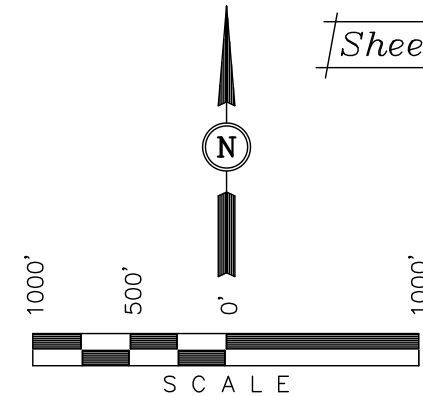
BASIS OF ELEVATION

SPOT ELEVATION AT THE NORTHEAST CORNER OF SECTION 10, T1S, R99W, 6th P.M. TAKEN FROM THE WOLF RIDGE QUADRANGLE, COLORADO, RIO BLANCO COUNTY, 7.5 MINUTE SERIES (TOPOGRAPHICAL MAP) PUBLISHED BY THE UNITED STATES DEPARTMENT OF THE INTERIOR, GEOLOGICAL SURVEY. SAID ELEVATION IS MARKED AS BEING 6663 FEET.

BASIS OF BEARINGS

BASIS OF BEARINGS IS A G.P.S. OBSERVATION.

Sheet 1a of 11



CERTIFICATE

THIS IS TO CERTIFY THAT THE ABOVE PLAT WAS PREPARED FROM FIELD NOTES OF ACTUAL SURVEYS MADE BY ME OR UNDER MY SUPERVISION AND THAT THE SAME ARE TRUE AND CORRECT TO THE BEST OF MY KNOWLEDGE AND BELIEF.

REGISTERED LAND SURVEYOR
REGISTRATION NO. 17492
STATE OF COLORADO

Revised: 07-27-11 D.R.B.

UINTAH ENGINEERING & LAND SURVEYING
85 SOUTH 200 EAST - VERNAL, UTAH 84078
(435) 789-1017

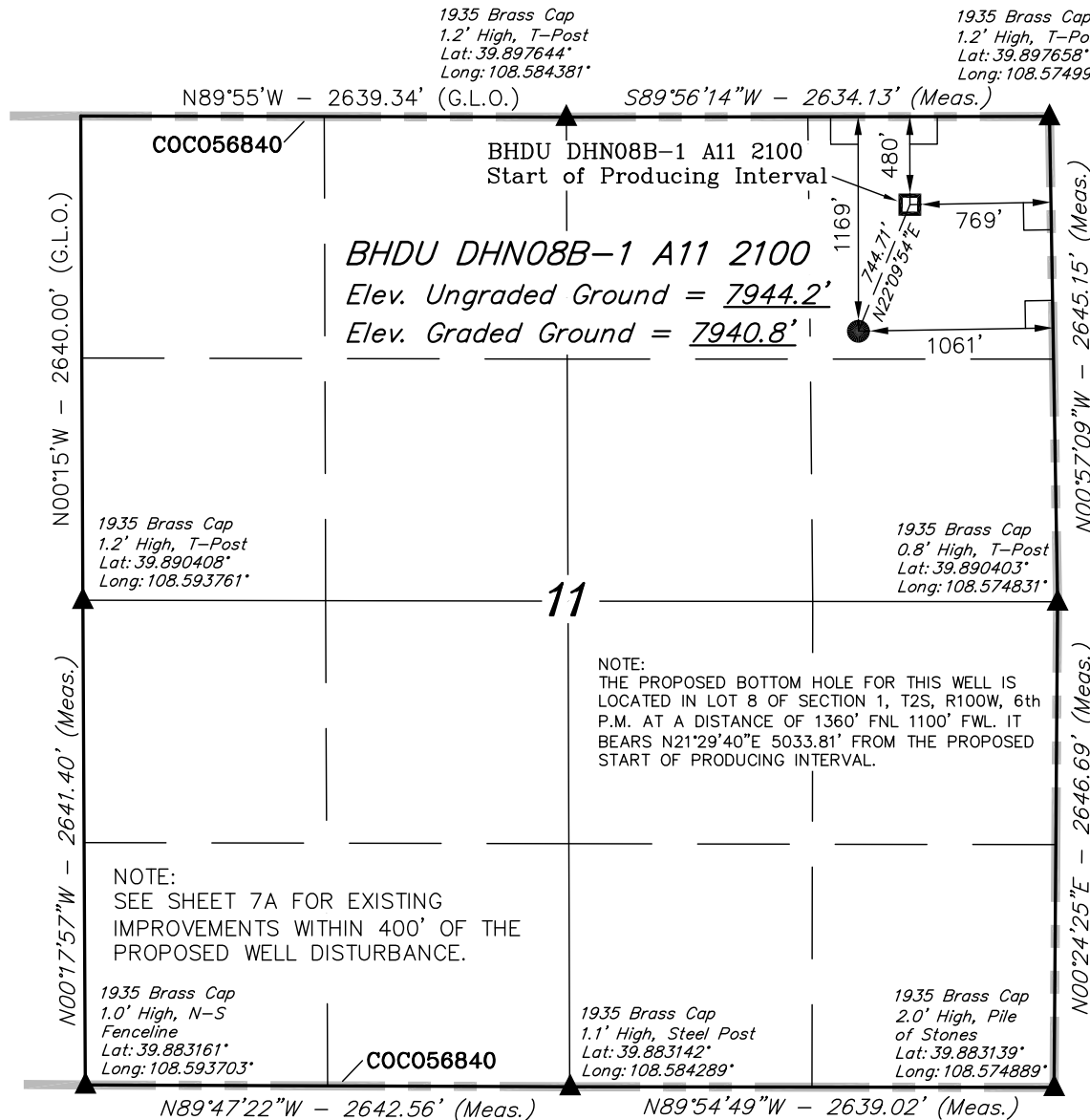
LEGEND:

- └─┘ = 90° SYMBOL
- = PROPOSED WELL HEAD.
- ▲ = SECTION CORNERS LOCATED.

PDOP = 2.1

NAD 83 (Start of Producing Interval)	NAD 83 (SURFACE LOCATION)
LATITUDE = 39°53'46.82" (39.896339)	LATITUDE = 39°53'40.00" (39.894444)
LONGITUDE = 108°34'39.74" (108.577706)	LONGITUDE = 108°34'43.33" (108.578703)
NAD 27 (Start of Producing Interval)	NAD 27 (SURFACE LOCATION)
LATITUDE = 39°53'46.91" (39.896364)	LATITUDE = 39°53'40.09" (39.894469)
LONGITUDE = 108°34'37.39" (108.577053)	LONGITUDE = 108°34'40.98" (108.578050)

SCALE 1" = 1000'	DATE SURVEYED: 09-23-10	DATE DRAWN: 06-22-11
PARTY G.O. B.B. D.R.B.	REFERENCES G.L.O. PLAT	
WEATHER COOL	FILE Encana OIL & GAS (USA) INC.	



SCALE 1" = 1000'	DATE SURVEYED: 09-23-10	DATE DRAWN: 06-22-11
PARTY G.O. B.B. D.R.B.	REFERENCES G.L.O. PLAT	
WEATHER COLD	FILE Encana OIL & GAS (USA) INC.	