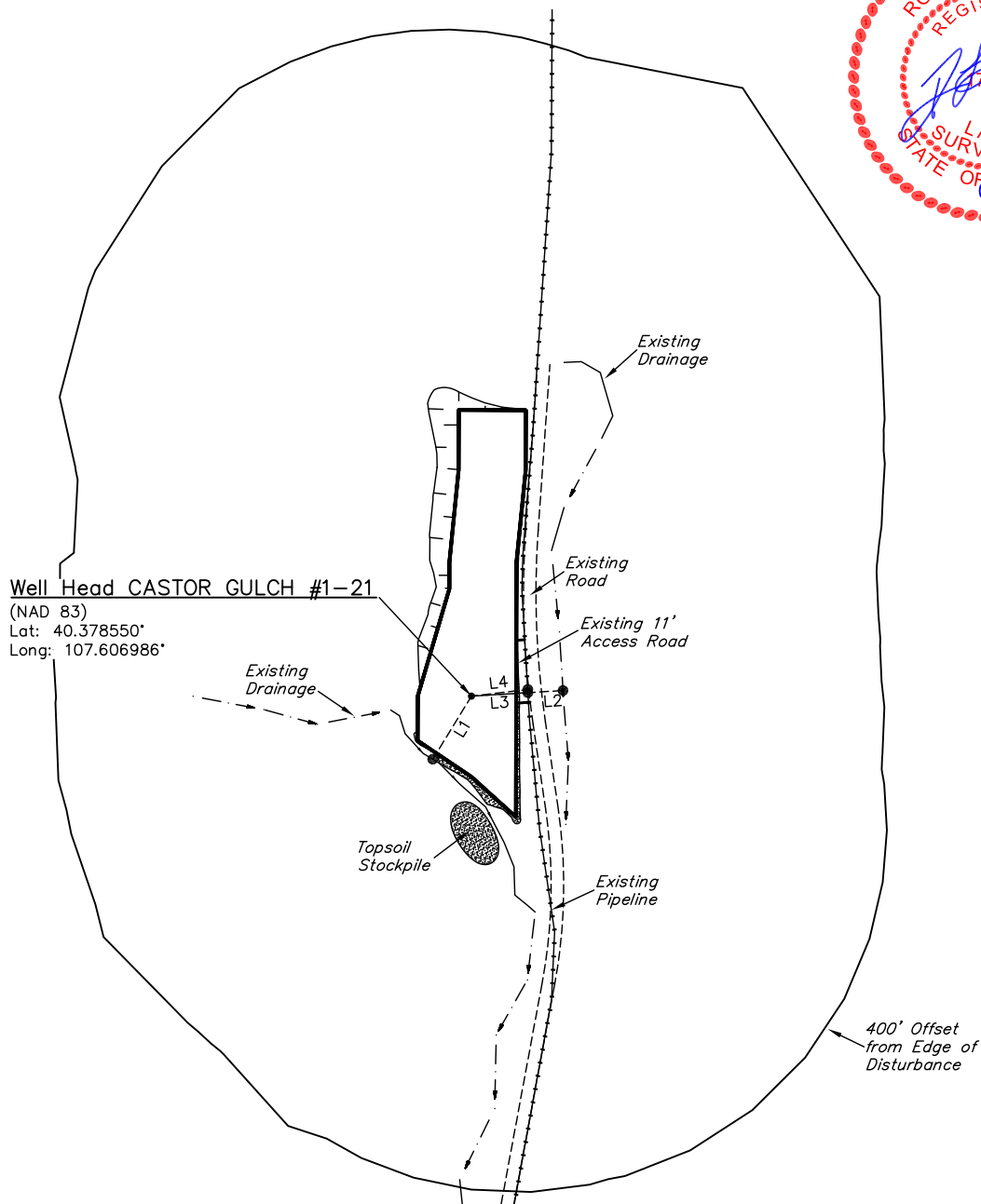
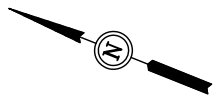


# SWEPI LP

## ADDENDUM TO LEGAL PLAT FOR

CASTOR GULCH #1-21  
SECTION 21, T5N, R91W, 6th. P.M.  
599' FNL 1318' FEL

SCALE: 1" = 200'  
DATE: 07-27-11  
DRAWN BY: C.J.C.



LINE TABLE		
LINE	LENGTH	DIRECTION
L1	82.76'	N80°20'35"W
L2	102.54'	S25°22'28"E
L3	63.17'	S25°26'10"E
L4	63.44'	S28°39'15"E

# SWEPI LP

## LOCATION DRAWING FOR

CASTOR GULCH #1-21  
SECTION 21, T5N, R91W, 6th. P.M.  
599' FNL 1318' FEL

FIGURE #5

W.C.  
1914 Brass Cap, 0.2'  
High, Steel Post,  
Carsonite Post  
Lat: 40.380192°  
Long: 107.601861°

S89°50'11"E - 2721.43' (Meas. To W.C.)  
S89°50'11"E - 2619.81' (Meas. To True)

Brass Cap, 0.6'  
High, Pile of Stones  
Lat: 40.380200°  
Long: 107.611625°

Section Line

True Position

John & Steve  
Raftopoulos

Lot 2

Lot 1

S74°W 4126'  
(To Building)

S63°E 1862'  
(To Power Line)

United States  
of America, Bureau  
of Land Management

1/16 Section Line

NE 1/4

1994 Alum. Cap,  
0.5' High, Pile of  
Stones, Steel Post,  
Carsonite Post  
Lat: 40.376311°  
Long: 107.602303°

Lot 6

1/4 Section Line

1/16 Section Line

Lot 7

TRACT 44

21

1/4 Section Line

Lot 10

Lot 9

Section Line  
N00°55'02"E - 1414.33' (Meas.)  
N00°55'32"E - 1412.86' (Meas.)

### LINE TABLE

LINE	FEATURE	DIRECTION	LENGTH
L1	SURFACE WATER	N80°W	83'
L2	COUNTY ROAD #93	S28°E	72'



1914 Brass Cap,  
1.3' High, Pile of  
Stones  
Lat: 40.372431°  
Long: 107.602381°

### PLANT COMMUNITY

- ☐ DISTURBED GRASSLAND
- ☐ NATIVE GRASSLAND
- ☐ SHRUB LAND
- ☐ PLAINS RIPARIAN
- ☐ MOUNTAIN RIPARIAN
- ☐ FOREST LAND
- ☐ WETLANDS AQUATIC
- ☐ ALPINE
- ☐ OTHER (Describe): \_\_\_\_\_

### CURRENT LAND USE

- CROP LAND: ☐ IRRIGATED ☐ DRY LAND ☐ IMPROVED PASTURE ☐ HAY MEADOW ☐ CRP
- NON-CROP LAND: ☐ RANGELAND ☐ TIMBER ☐ RECREATIONAL ☐ OTHER (Describe) \_\_\_\_\_
- SUBDIVIDED: ☐ INDUSTRIAL ☐ COMMERCIAL ☐ RESIDENTIAL \_\_\_\_\_

### FUTURE LAND USE

- CROP LAND: ☐ IRRIGATED ☐ DRY LAND ☐ IMPROVED PASTURE ☐ HAY MEADOW ☐ CRP
- NON-CROP LAND: ☐ RANGELAND ☐ TIMBER ☐ RECREATIONAL ☐ OTHER (Describe) \_\_\_\_\_
- SUBDIVIDED: ☐ INDUSTRIAL ☐ COMMERCIAL ☐ RESIDENTIAL \_\_\_\_\_